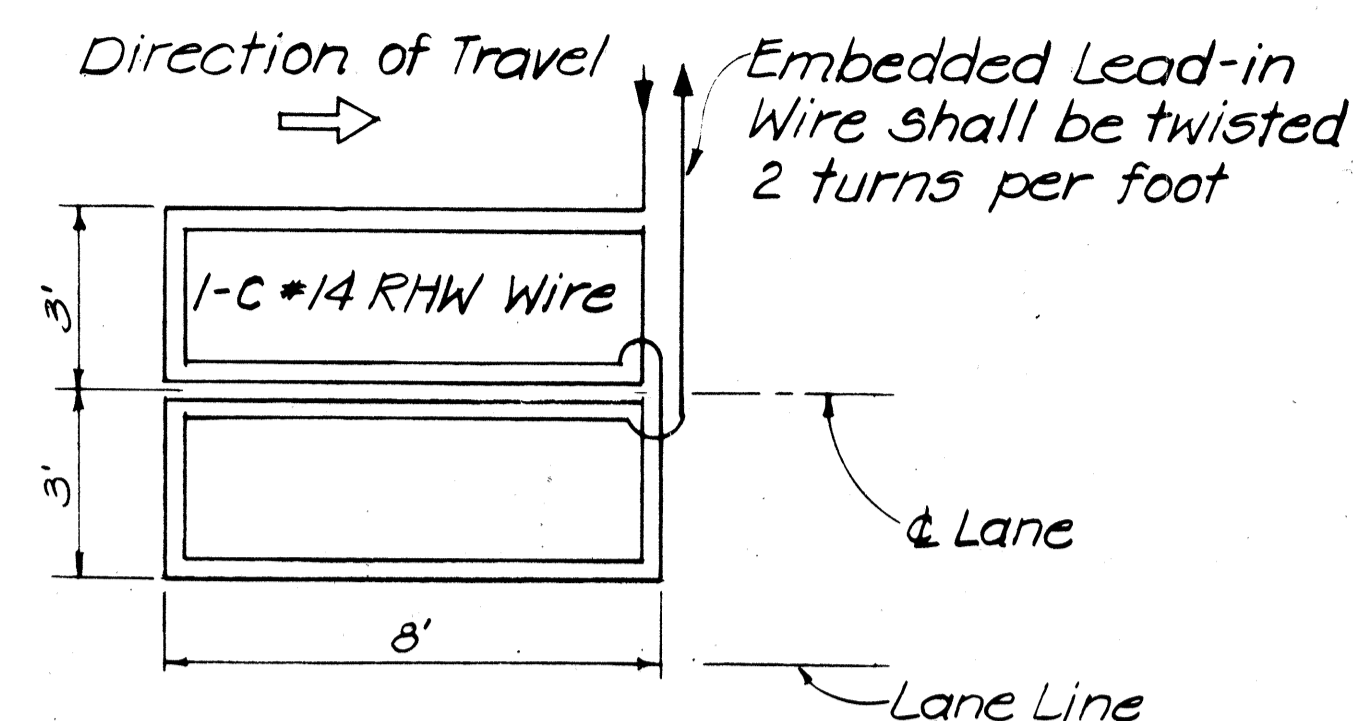
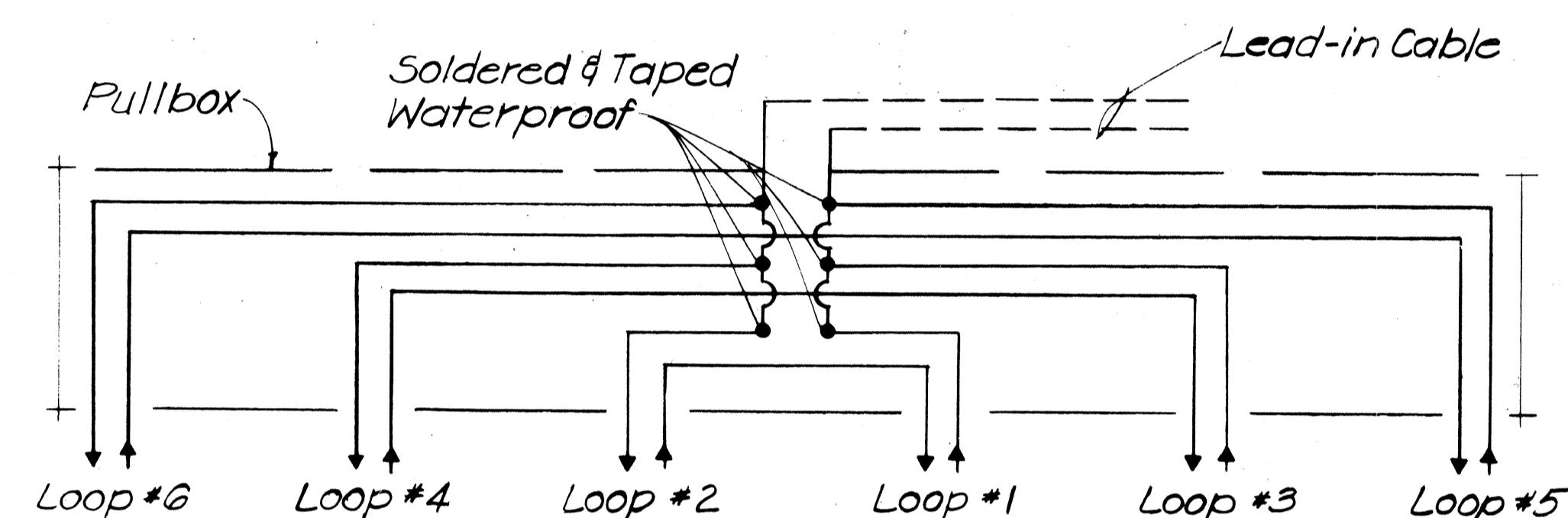


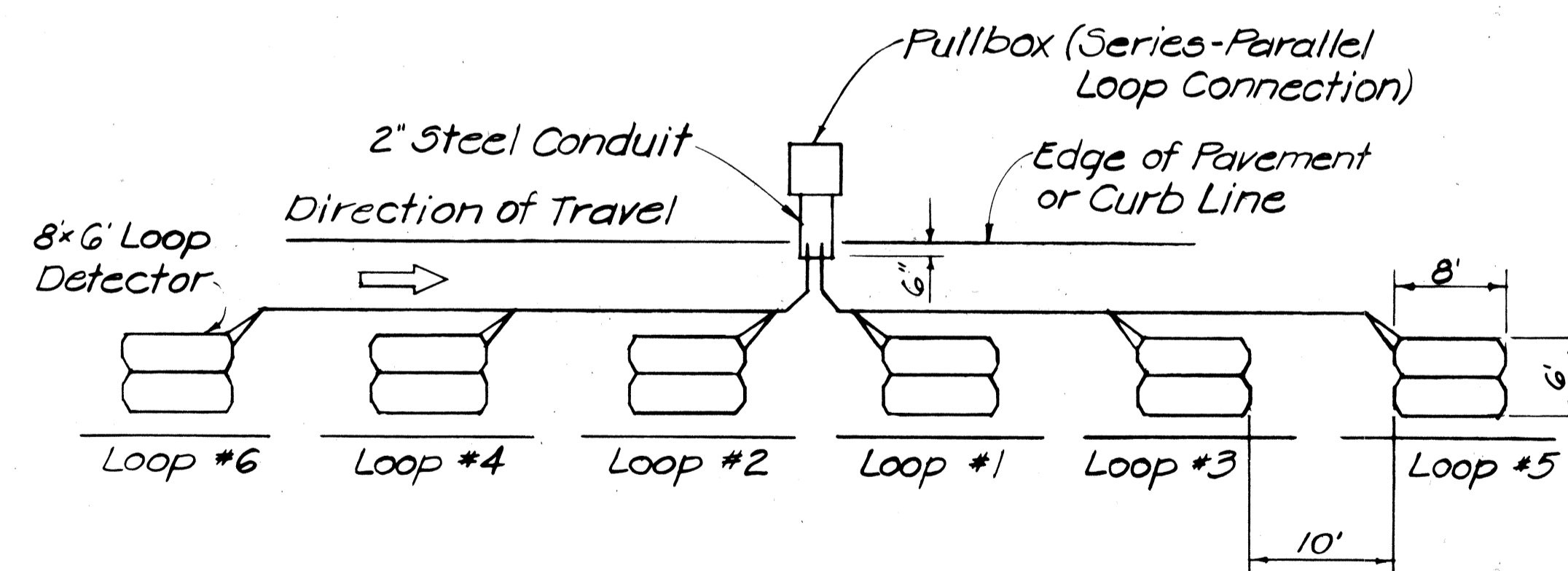
FED. ROAD DIST. NO.	STATE	PROJ. NO.	FISCAL YEAR	SHEET NO.	TOTAL SHEETS
HAWAII	HAW.	9000A-01-80M	1980	6	12



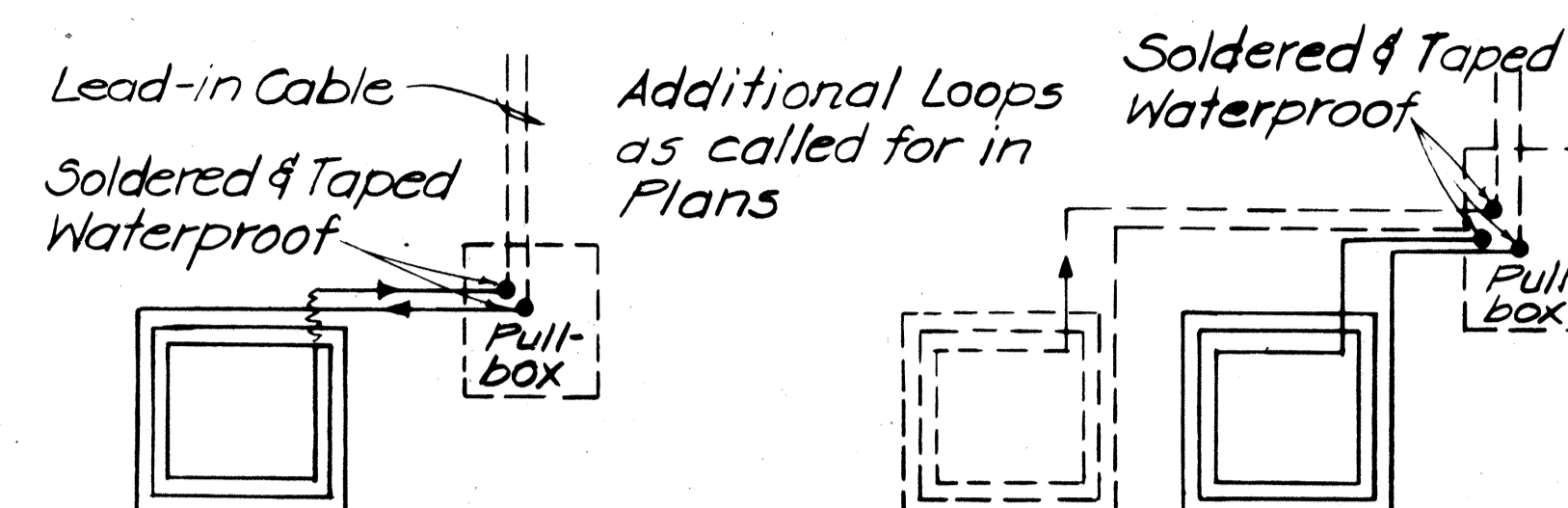
WIRING DIAGRAM



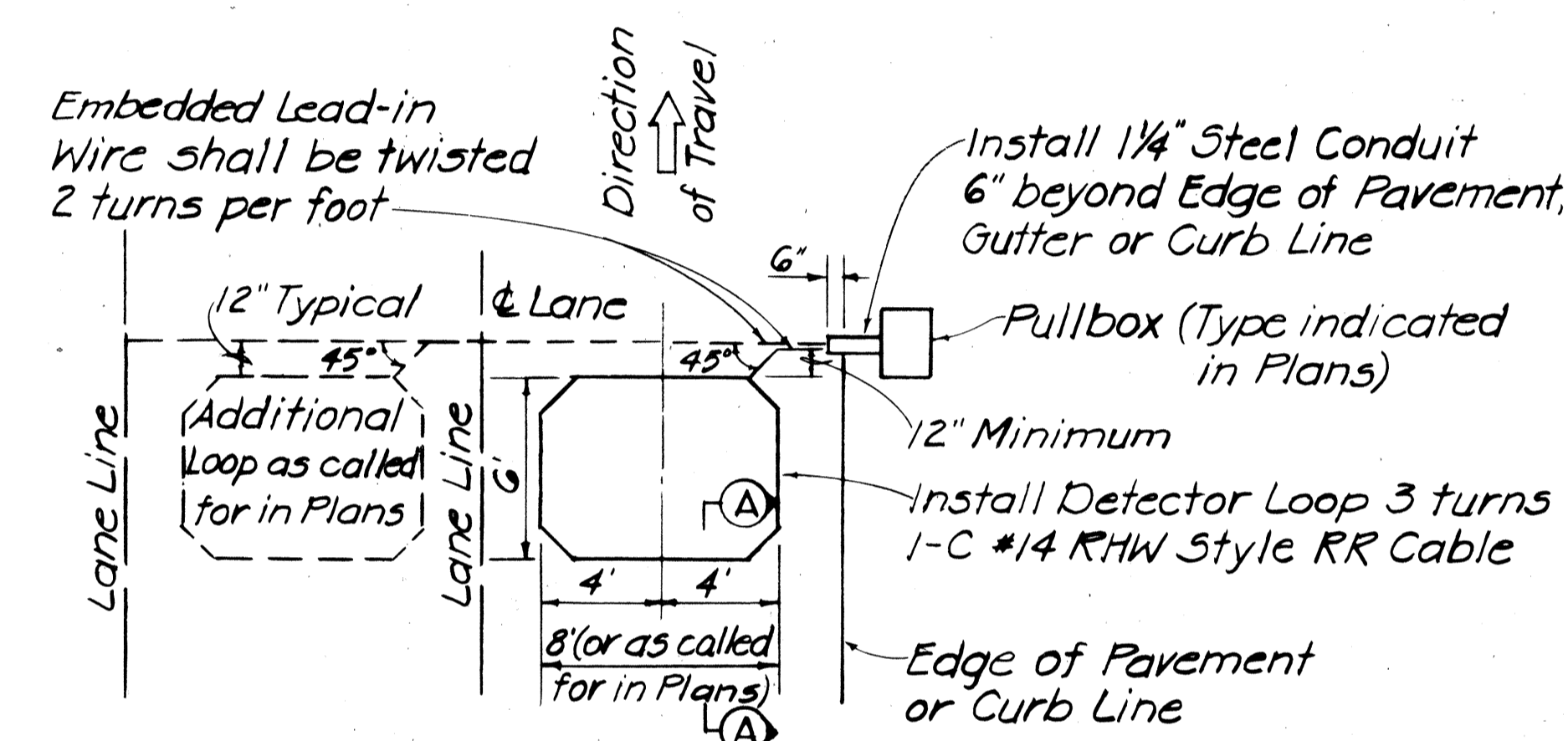
SERIES-PARALLEL LOOP CONNECTION



PLAN
TYPICAL DETAILS
LOOP DETECTORS - TYPE II
NOT TO SCALE



WIRING DIAGRAMS



PLAN
TYPICAL DETAILS
LOOP DETECTORS - TYPE I
NOT TO SCALE

NOTE:

1. The Contractor shall notify Mr. Carl Hagihara of the City & County of Honolulu, Department of Transportation Services at least 7 days prior to doing any work on the Loop Detector Layout.
2. Exact locations of Preformed Inductive Vehicle Loop Detectors shall be staked out in the field by the Contractor and approved by the Engineer prior to installation.
3. Preformed Inductive Vehicle Loop Detectors shall conform with implementation package UDOT-IMP-77-1, "Preformed Inductive Loops."

STATE OF HAWAII
DEPARTMENT OF TRANSPORTATION
HIGHWAYS DIVISION

TYPICAL DETAILS
VEHICLE LOOP DETECTORS

FARRINGTON HWY. RESURFACING
EWA JUNCTION TO PUPUKAHI ST.
PROJ. NO. 9000A-01-80M
Scale: As Noted

SHEET No. / OF / SHEETS