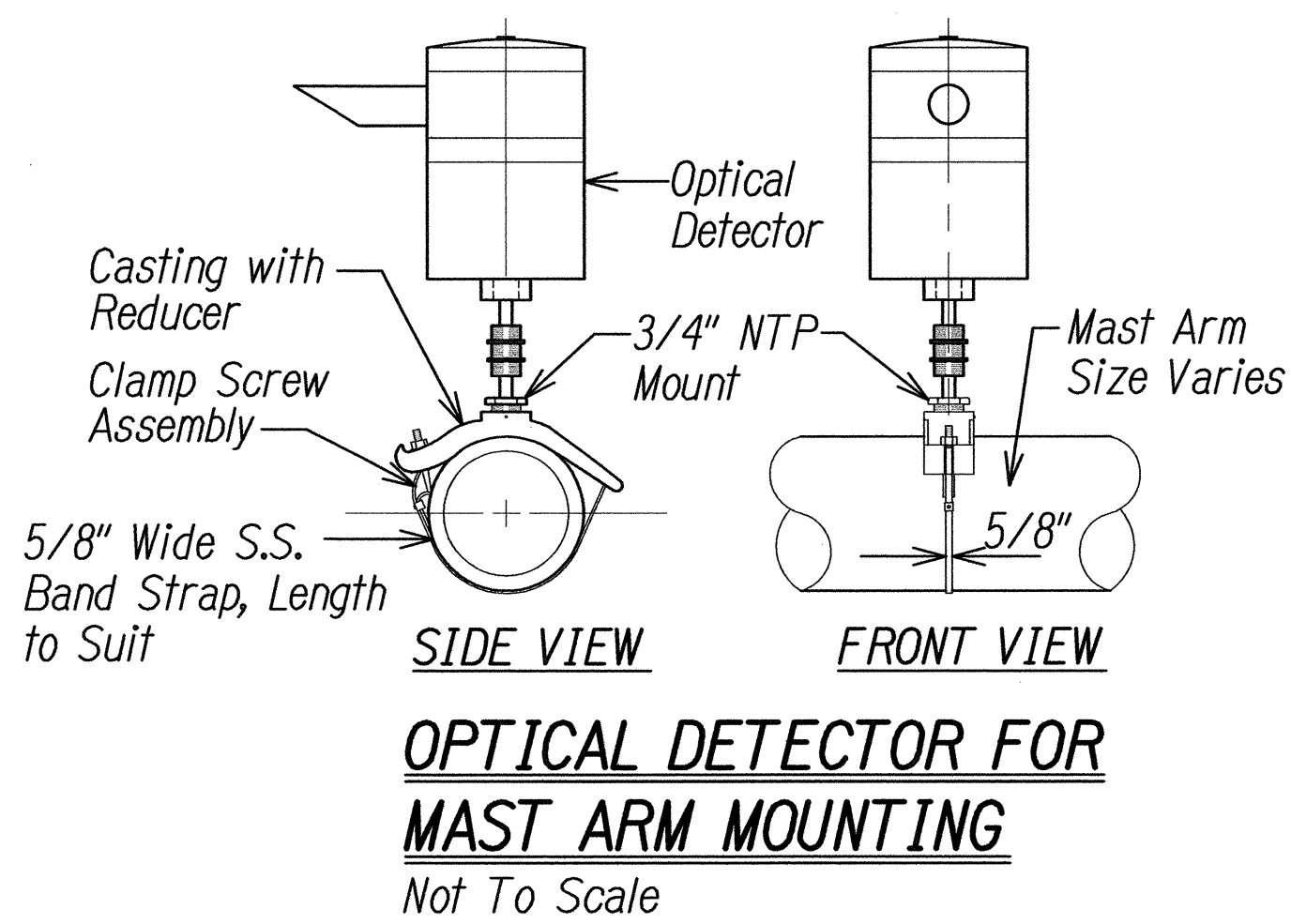
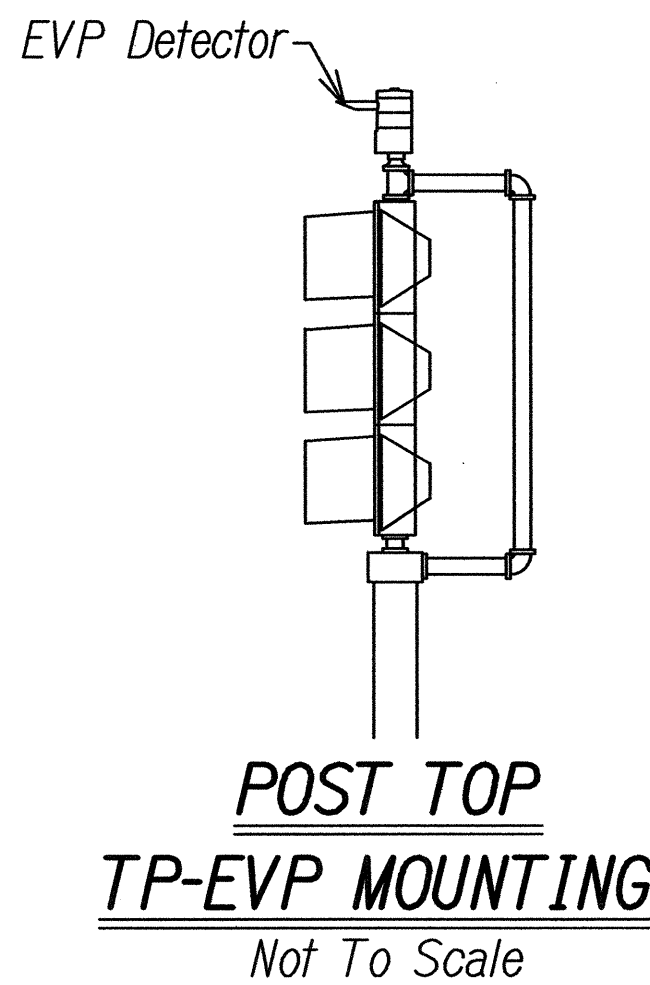
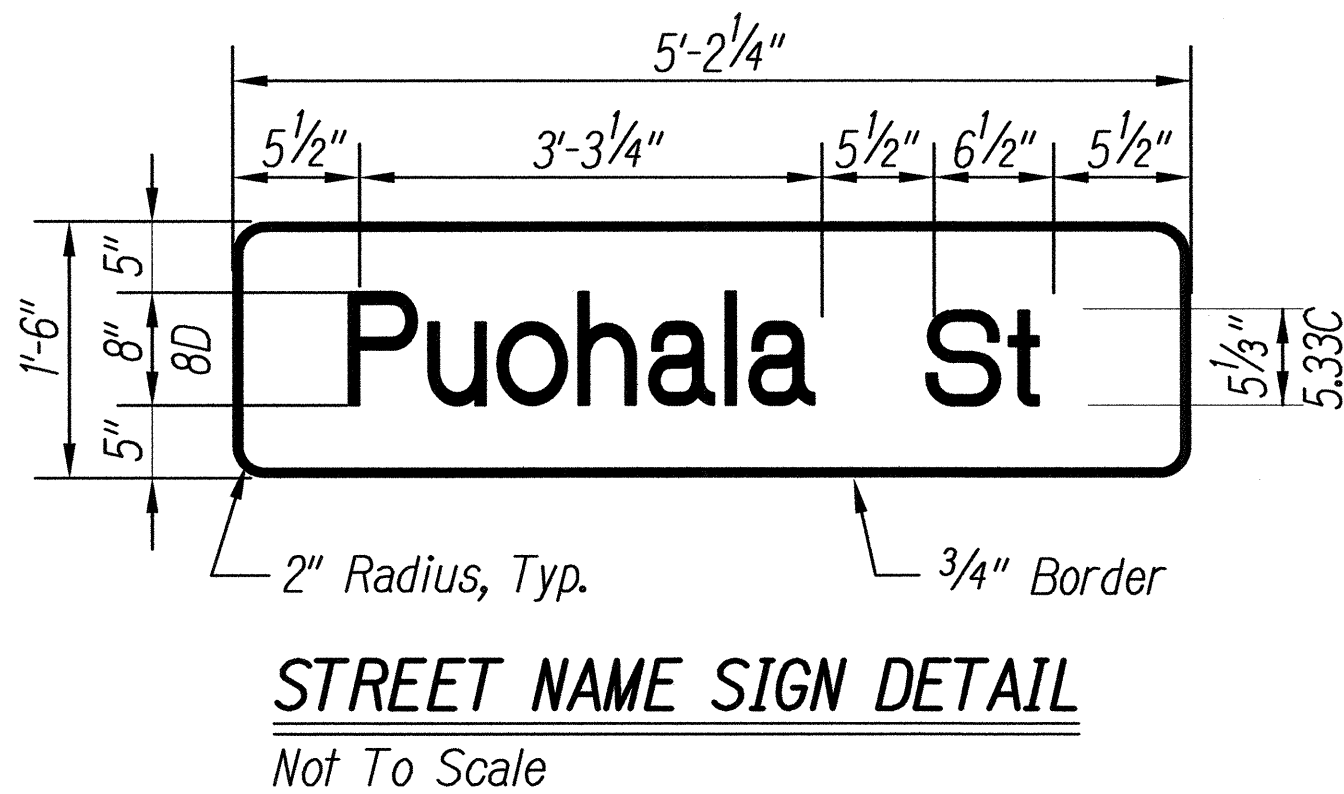


FED. ROAD DIST. NO.	STATE	PROJ. NO.	FISCAL YEAR	SHEET NO.	TOTAL SHEETS
OAHU	HAW.	HWY-0-01-13	2016	34	47

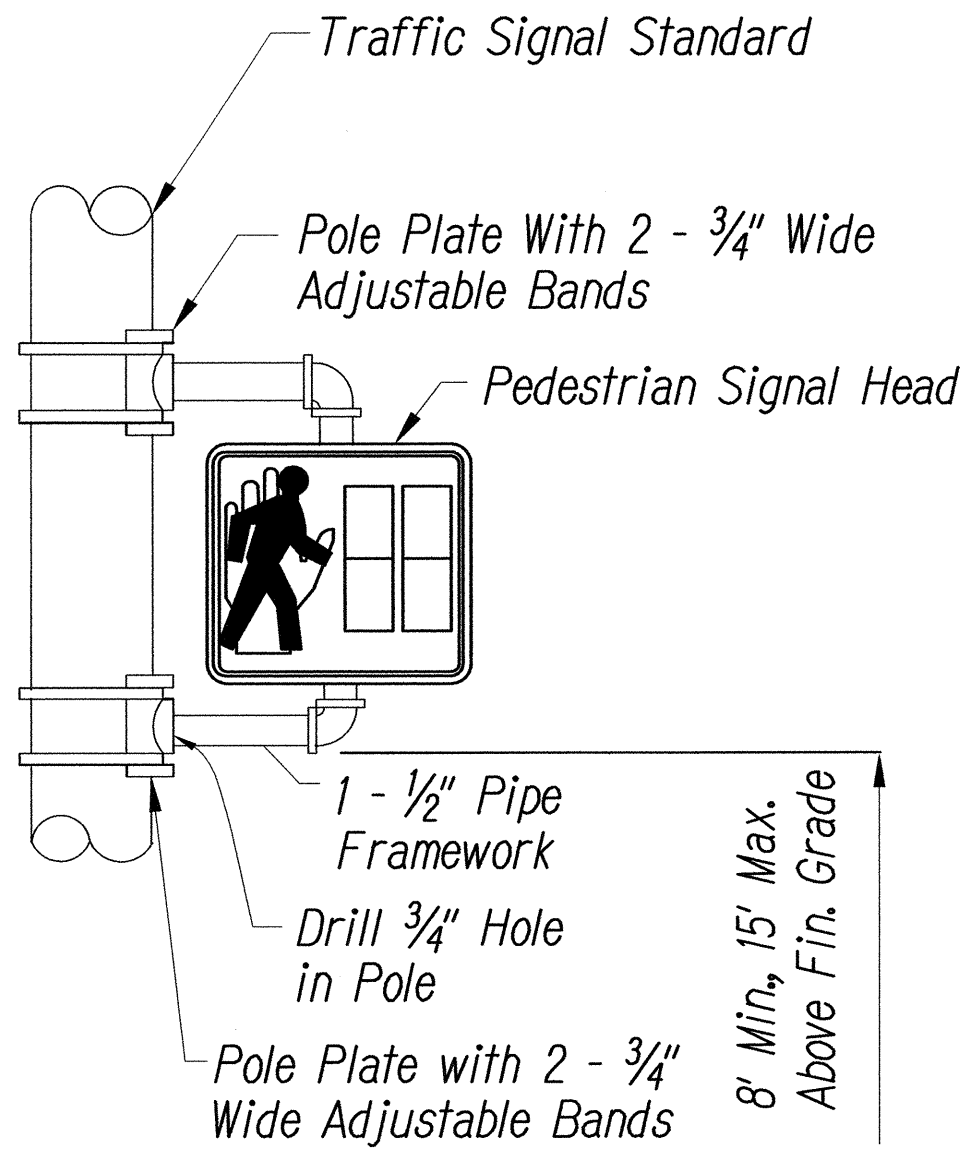
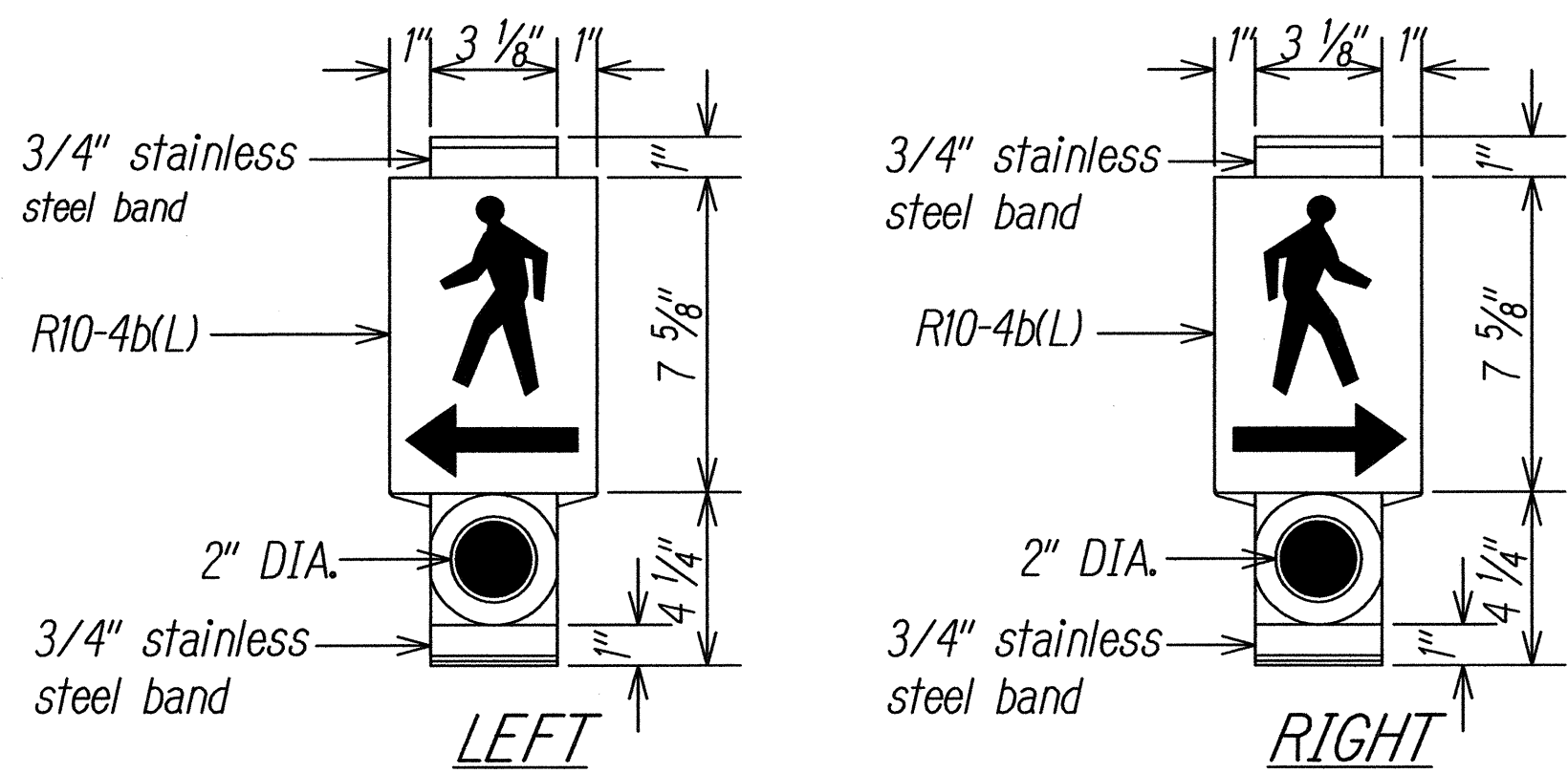


- Notes:
1. Optical Detector shall be "Model 711 Preemption Detector" or Approved Equal, Unless Noted Otherwise in the Special Provision.
  2. Support Saddle Assembly shall be "ASTRO MINIBRAC, AB-0132-29", or Approved Equal, Unless Noted Otherwise in the Special Provision.

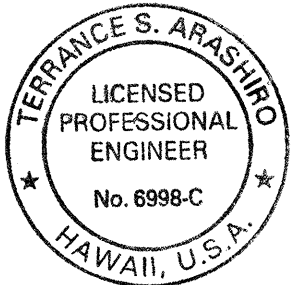


The color scheme shall be:  
 White - Man, arrow and push button  
 Black - Background

NOTE: On plan sheet, use applicable detail.  
 see state STD. DET. for PPB pedestal.



**PEDESTRIAN SIGNAL MOUNTING**  
NOT TO SCALE



EXP. 4/30/16

This work was prepared by me or under my supervision and construction of this project will be under my observation.  
 (Observation of construction as defined in Chapter 18-115 Subchapter 1 Definitions of the Hawaii Administrative Rules "Professional Engineers, Architects, Surveyors, and Landscape Architects.")

STATE OF HAWAII  
DEPARTMENT OF TRANSPORTATION  
HIGHWAYS DIVISION  
**TRAFFIC SIGNAL DETAILS**

TRAFFIC OPERATIONAL IMPROVEMENTS  
AT VARIOUS LOCATIONS  
Project No. HWY-0-01-13

Scale: As Noted Date: Oct 2015  
 SHEET No. TS-6 OF 6 SHEETS