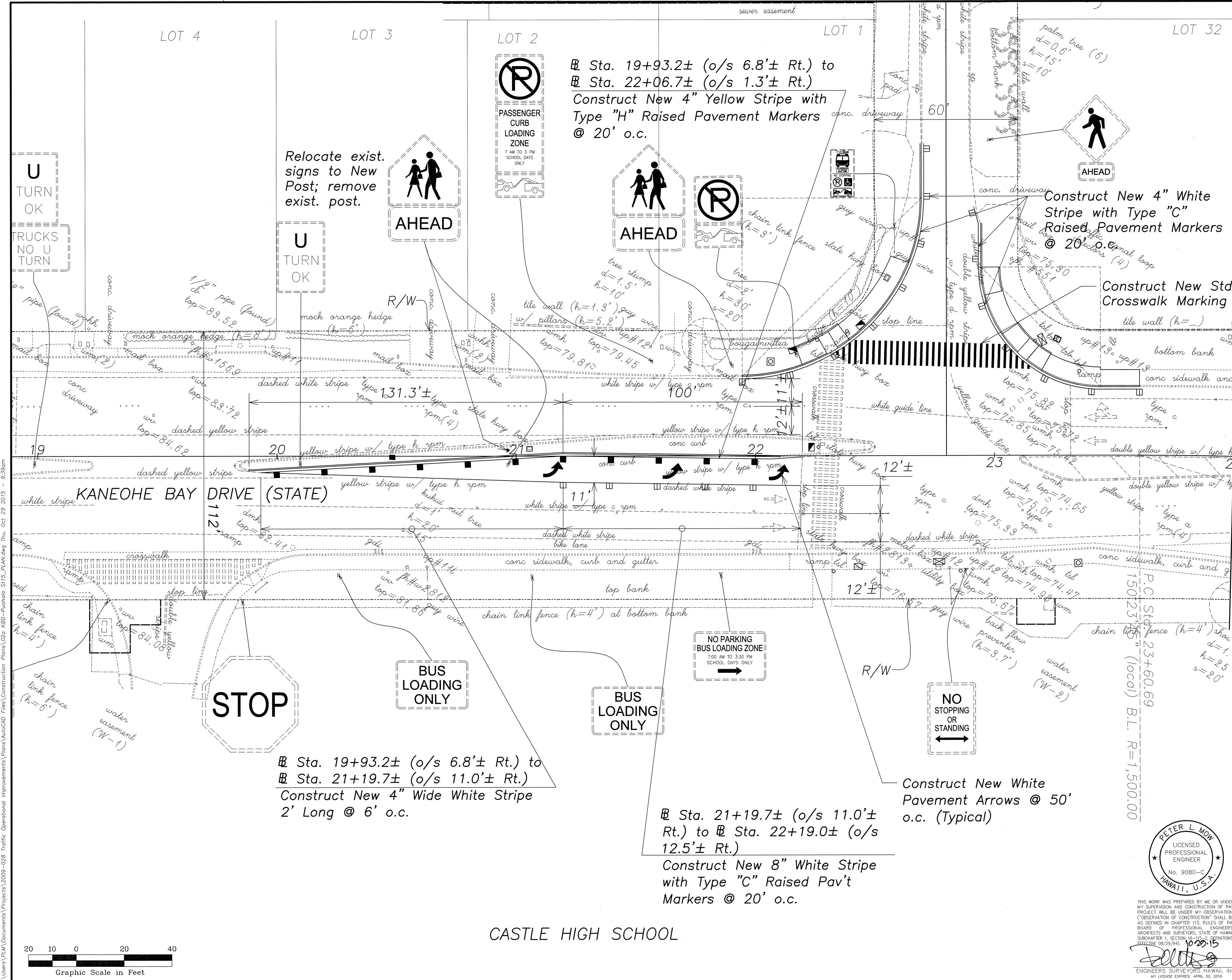
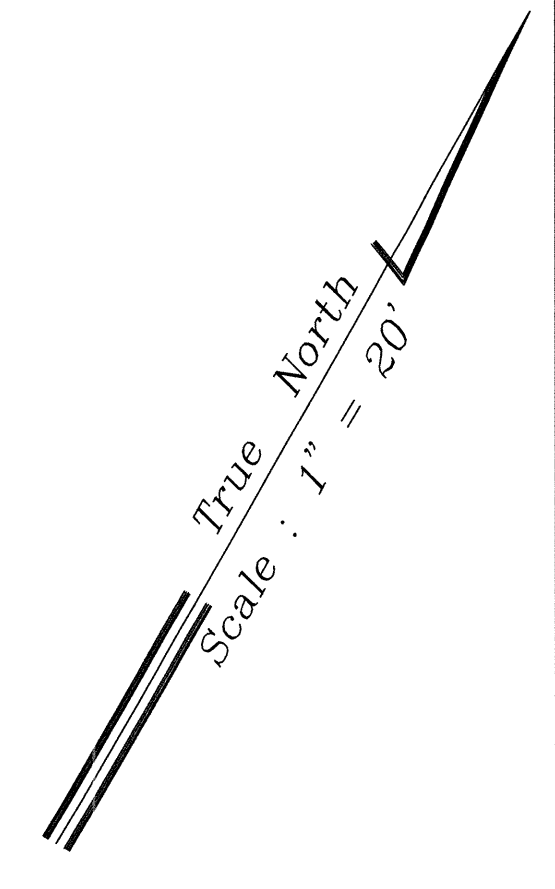
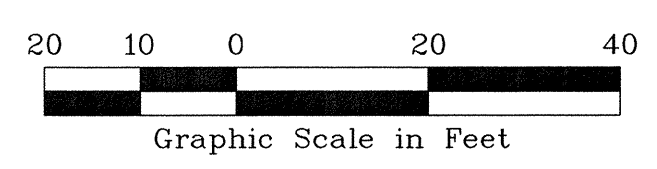


FED. ROAD DIST. NO.	STATE	PROJ. NO.	FISCAL YEAR	SHEET NO.	TOTAL SHEETS
OAHU	HAW.	HWY-0-01-13	2016	26	47



MATCH LINE @ STA. 24+00

SURVEY PLOTTED BY	DATE
DRAWN BY	
DESIGNED BY	
CHECKED BY	
NOTE BOOK	
No.	

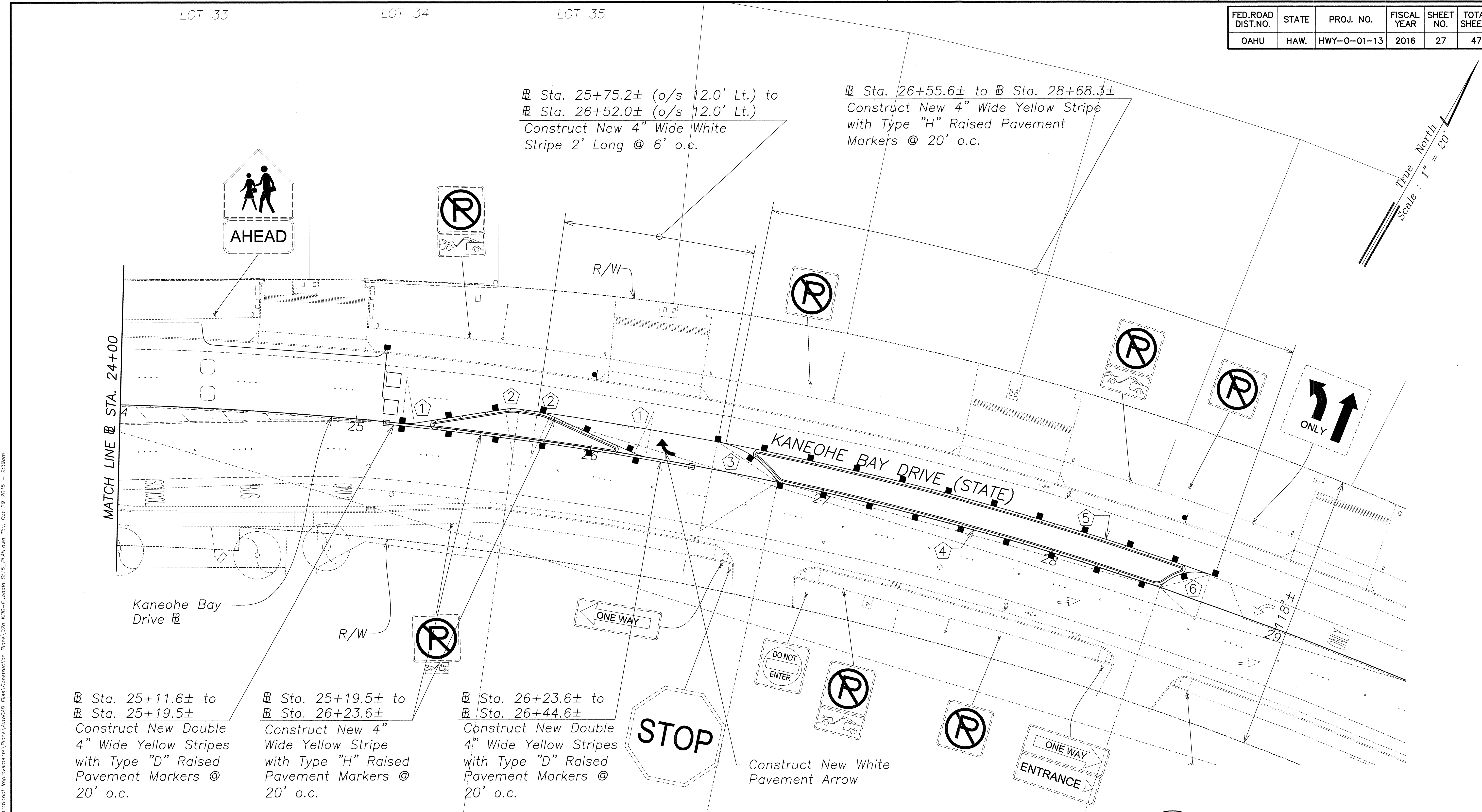


PETER L. MOW
LICENSED PROFESSIONAL ENGINEER
No. 9080-C
HAWAII, U.S.A.

THIS WORK WAS PREPARED BY ME OR UNDER MY SUPERVISION AND CONSTRUCTION OF THIS PROJECT WILL BE UNDER MY OBSERVATION. ("OBSERVATION OF CONSTRUCTION" SHALL BE DEFINED IN CHAPTER 115, RULES OF THE BOARD OF PROFESSIONAL ENGINEERS, ARCHITECTS AND SURVEYORS, STATE OF HAWAII, SUBCHAPTER 1, SECTION 115-2, TECHNICALS, EFFECTIVE 08/29/94.)
10/20/15
ENGINEERS SURVEYORS HAWAII, INC.
MY LICENSE EXPIRES: APRIL 30, 2016

STATE OF HAWAII
DEPARTMENT OF TRANSPORTATION
HIGHWAYS DIVISION
PAVEMENT MARKING
SIGNING & STRIPING PLAN
Traffic Operational Improvements
at Various Locations
Vicinity of Kaneohe Bay Drive
and Puuhala Street
Project No. HWY-0-01-13
Scale: As Noted Date: Oct 2015
SHEET No. 2 OF 3 SHEETS

FED. ROAD DIST. NO.	STATE	PROJ. NO.	FISCAL YEAR	SHEET NO.	TOTAL SHEETS
OAHU	HAW.	HWY-0-01-13	2016	27	47



@ Sta. 25+75.2± (o/s 12.0' Lt.) to
 @ Sta. 26+52.0± (o/s 12.0' Lt.)
 Construct New 4" Wide White
 Stripe 2' Long @ 6' o.c.

@ Sta. 26+55.6± to @ Sta. 28+68.3±
 Construct New 4" Wide Yellow Stripe
 with Type "H" Raised Pavement
 Markers @ 20' o.c.

@ Sta. 25+11.6± to
 @ Sta. 25+19.5±
 Construct New Double
 4" Wide Yellow Stripes
 with Type "D" Raised
 Pavement Markers @
 20' o.c.

@ Sta. 25+19.5± to
 @ Sta. 26+23.6±
 Construct New 4"
 Wide Yellow Stripe
 with Type "H" Raised
 Pavement Markers @
 20' o.c.

@ Sta. 26+23.6± to
 @ Sta. 26+44.6±
 Construct New Double
 4" Wide Yellow Stripes
 with Type "D" Raised
 Pavement Markers @
 20' o.c.

CURVE DATA - NEW STRIPING

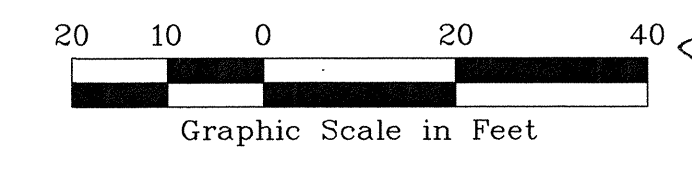
	①	②	③	④	⑤	⑥
Δ	14°43'44"	16°34'06"	46°43'54"	6°24'24"	18°32'50"	66°46'24"
Δ/2	7°21'52"	8°17'03"	23°21'57"	3°12'12"	9°16'25"	33°23'12"
R	20.00	20.00	39.00	1,500.00	1,512.00	20.00
T	2.58	2.91	16.85	83.95	246.88	13.18
C	5.13	5.76	30.93	167.64	487.31	22.01
Lc	5.14	5.78	31.81	167.72	489.45	23.31

SURVEY PLOTTED BY	DATE
DRAWN BY	
DESIGNED BY	
CHECKED BY	
NOTE BOOK	
No.	

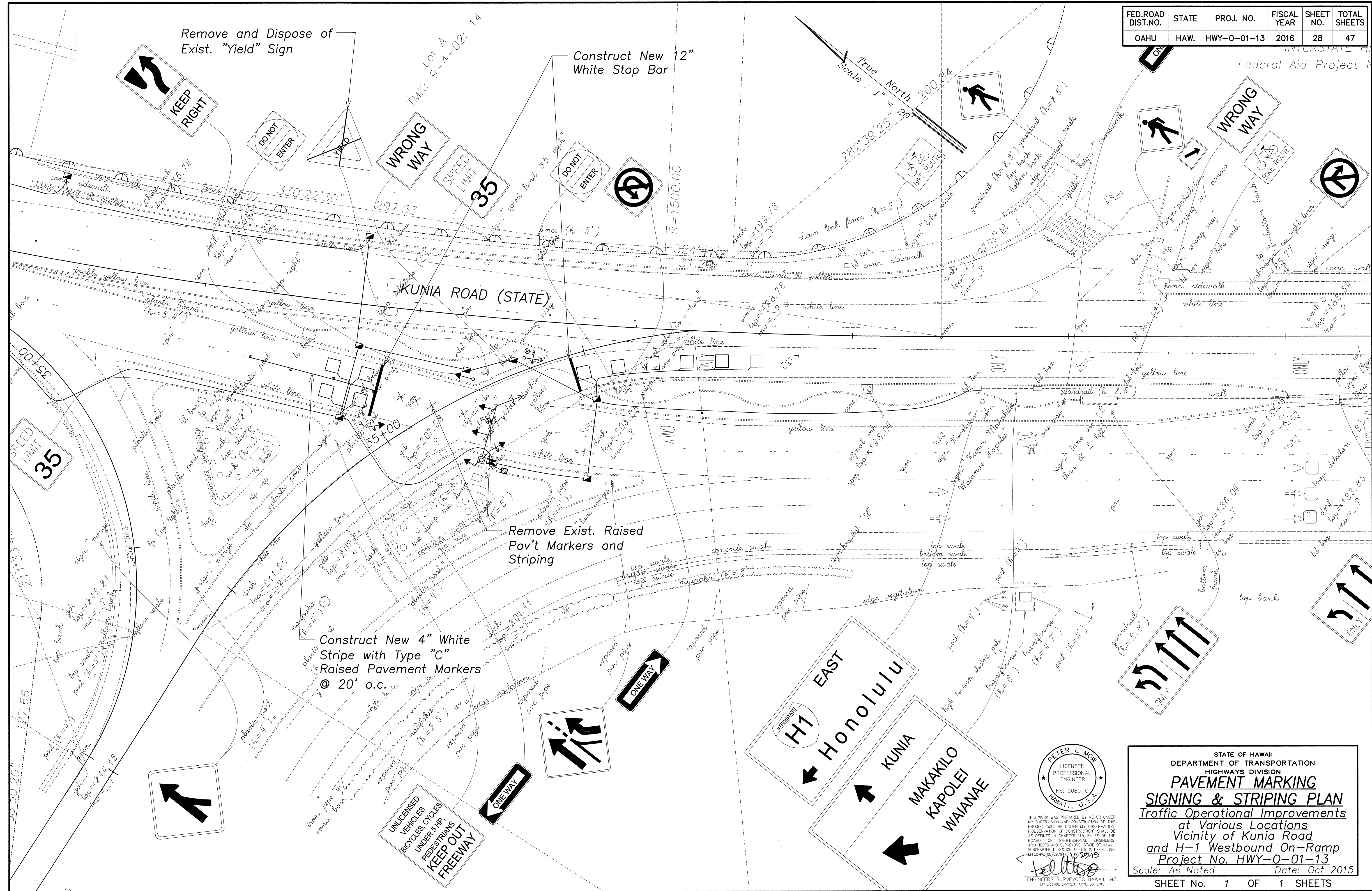
C:\Users\PLM\Documents\Projects\2009-028 Traffic Operational Improvements\Plans\AutoCAD Files\Construction Plans\02a KBD-Puuhala ST15_PLANK.dwg Thu, Oct 29 2015 - 9:39am

PETER L. MOW
 LICENSED PROFESSIONAL ENGINEER
 No. 9080-C
 HAWAII, U.S.A.
 THIS WORK WAS PREPARED BY ME OR UNDER MY SUPERVISION AND CONSTRUCTION OF THIS PROJECT WILL BE UNDER MY OBSERVATION. "OBSERVATION OF CONSTRUCTION" SHALL BE AS DEFINED IN CHAPTER 115, RULES OF THE BOARD OF PROFESSIONAL ENGINEERS, ARCHITECTS AND SURVEYORS, STATE OF HAWAII, SUBCHAPTER 115-15.2, DEFINITIONS, EFFECTIVE 08/29/04. 10-28-15
 ENGINEERS SURVEYORS HAWAII, INC.
 MY LICENSE EXPIRES APRIL 30, 2016

STATE OF HAWAII
 DEPARTMENT OF TRANSPORTATION
 HIGHWAYS DIVISION
PAVEMENT MARKING
SIGNING & STRIPING PLAN
 Traffic Operational Improvements
 at Various Locations
 Vicinity of Kaneohe Bay Drive
 and Puuhala Street
 Project No. HWY-0-01-13
 Scale: As Noted Date: Oct 2015
 SHEET No. 3 OF 3 SHEETS



FED. ROAD DIST. NO.	STATE	PROJ. NO.	FISCAL YEAR	SHEET NO.	TOTAL SHEETS
OAHU	HAW.	HWY-0-01-13	2016	28	47



DATE	_____
SURVEY PLOTTED BY	_____
DRAWN BY	_____
TRACED BY	_____
DESIGNED BY	_____
CHECKED BY	_____
NO.	_____

PETER L. MOW
 LICENSED PROFESSIONAL ENGINEER
 No. 9080-C
 HAWAII, U.S.A.

THIS WORK WAS PREPARED BY ME OR UNDER MY SUPERVISION AND CONSTRUCTION OF THIS PROJECT WILL BE UNDER MY OBSERVATION. ("OBSERVATION OF CONSTRUCTION" SHALL BE AS DEFINED IN CHAPTER 115, RULES OF THE BOARD OF PROFESSIONAL ENGINEERS, ARCHITECTS AND SURVEYORS, STATE OF HAWAII, SUBCHAPTER 115-3, SECTION 115-3.03(1)(D), EFFECTIVE 08/29/04.)

10/22/15
 ENGINEERS SURVEYORS HAWAII, INC.
 MY LICENSE EXPIRES: APRIL 30, 2016

STATE OF HAWAII
 DEPARTMENT OF TRANSPORTATION
 HIGHWAYS DIVISION
**PAVEMENT MARKING
 SIGNING & STRIPING PLAN**
 Traffic Operational Improvements
 at Various Locations
 Vicinity of Kunia Road
 and H-1 Westbound On-Ramp
 Project No. HWY-0-01-13
 Scale: As Noted Date: Oct 2015