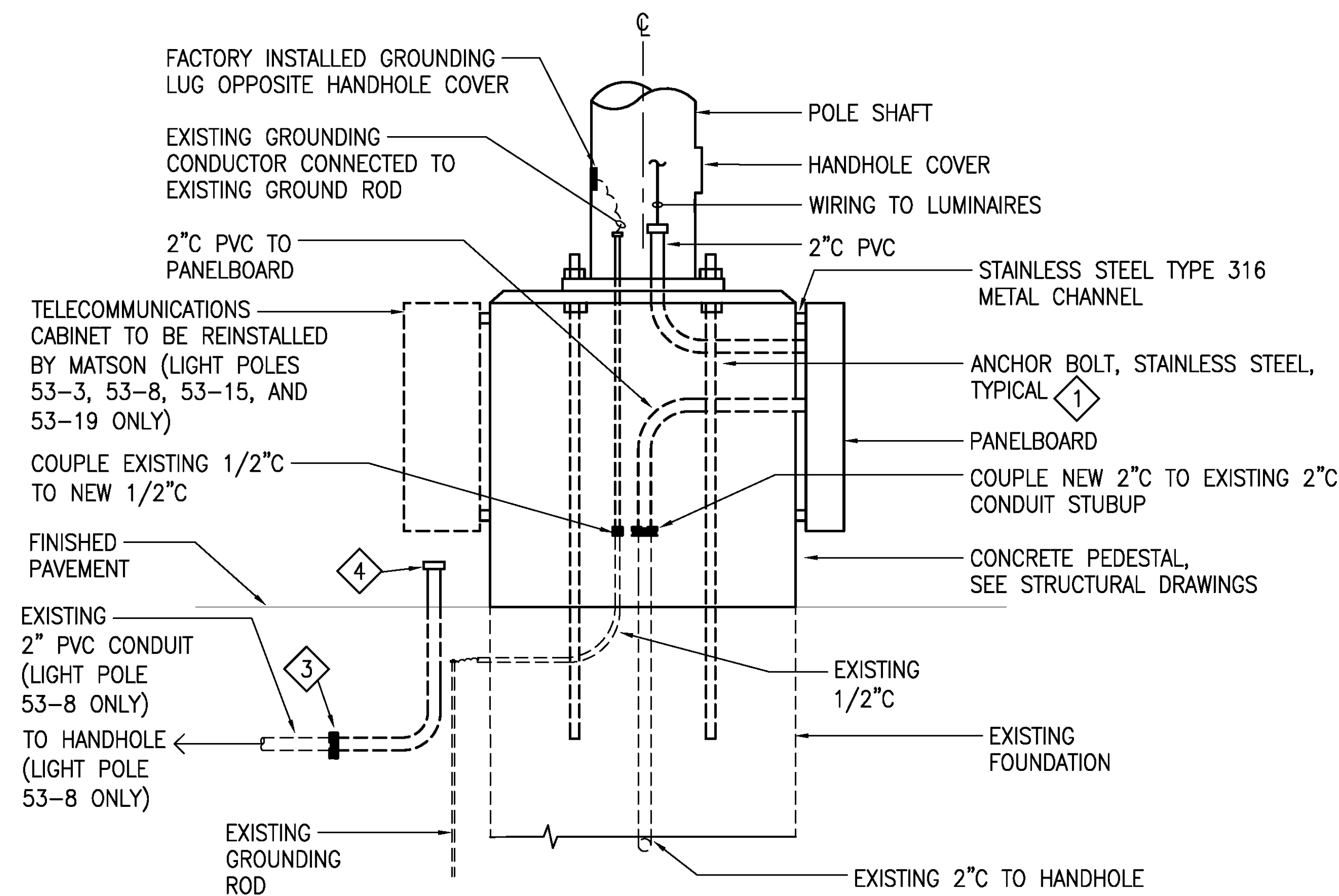
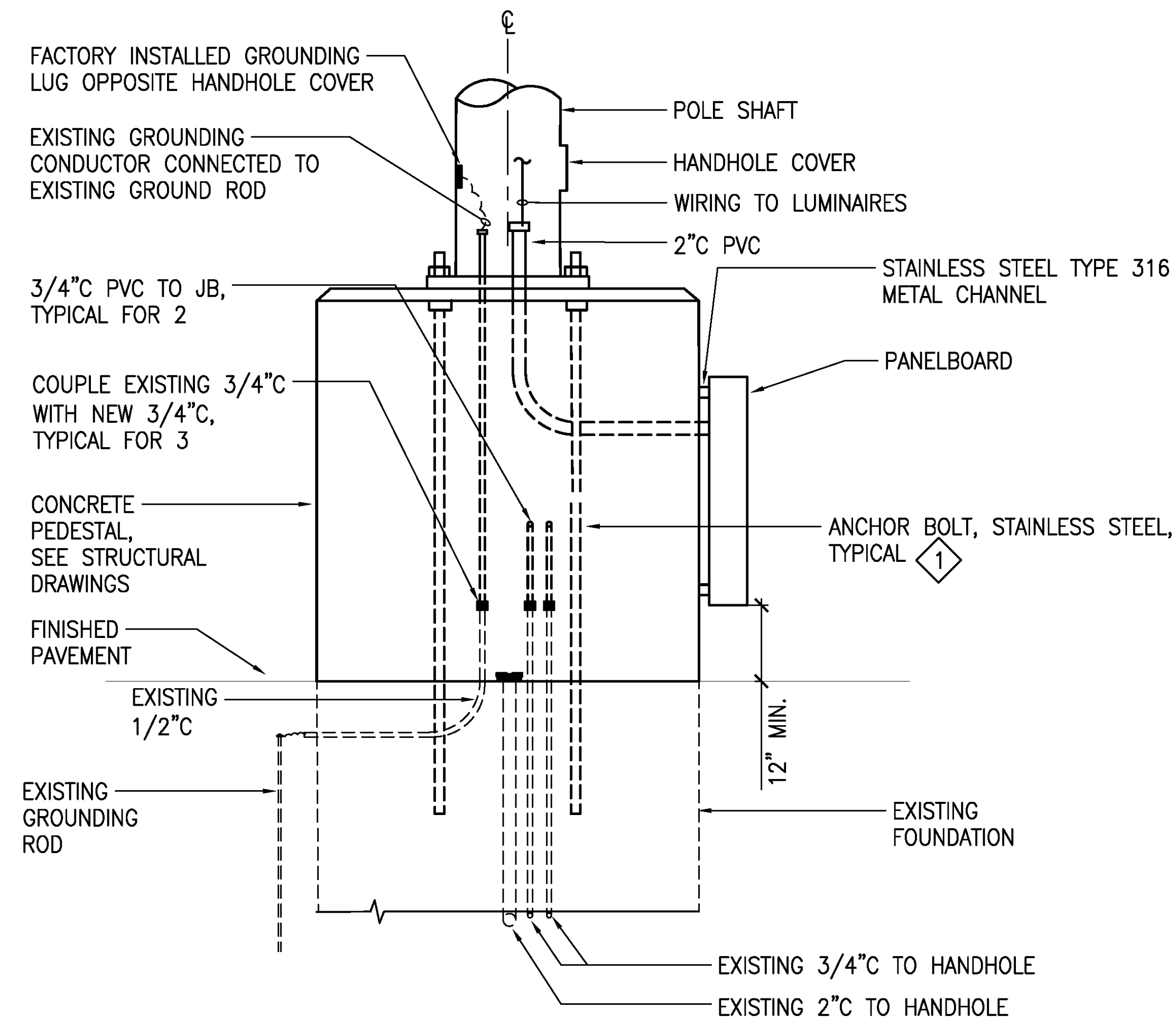


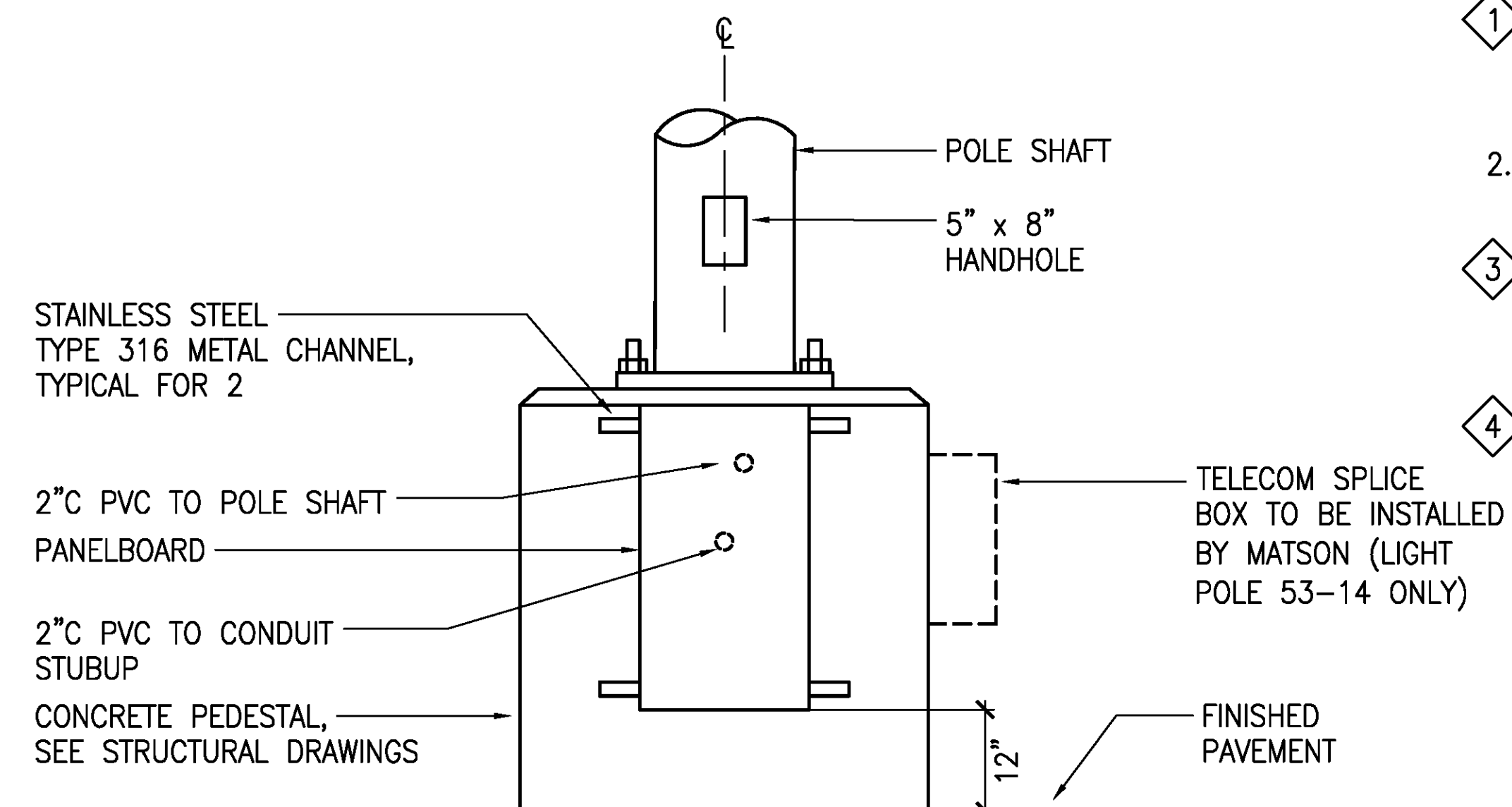
4/25/23-16:50 Y:\044\044.088 Pier 53 Repair Elec Panels\044.088 E-5.002.dwg



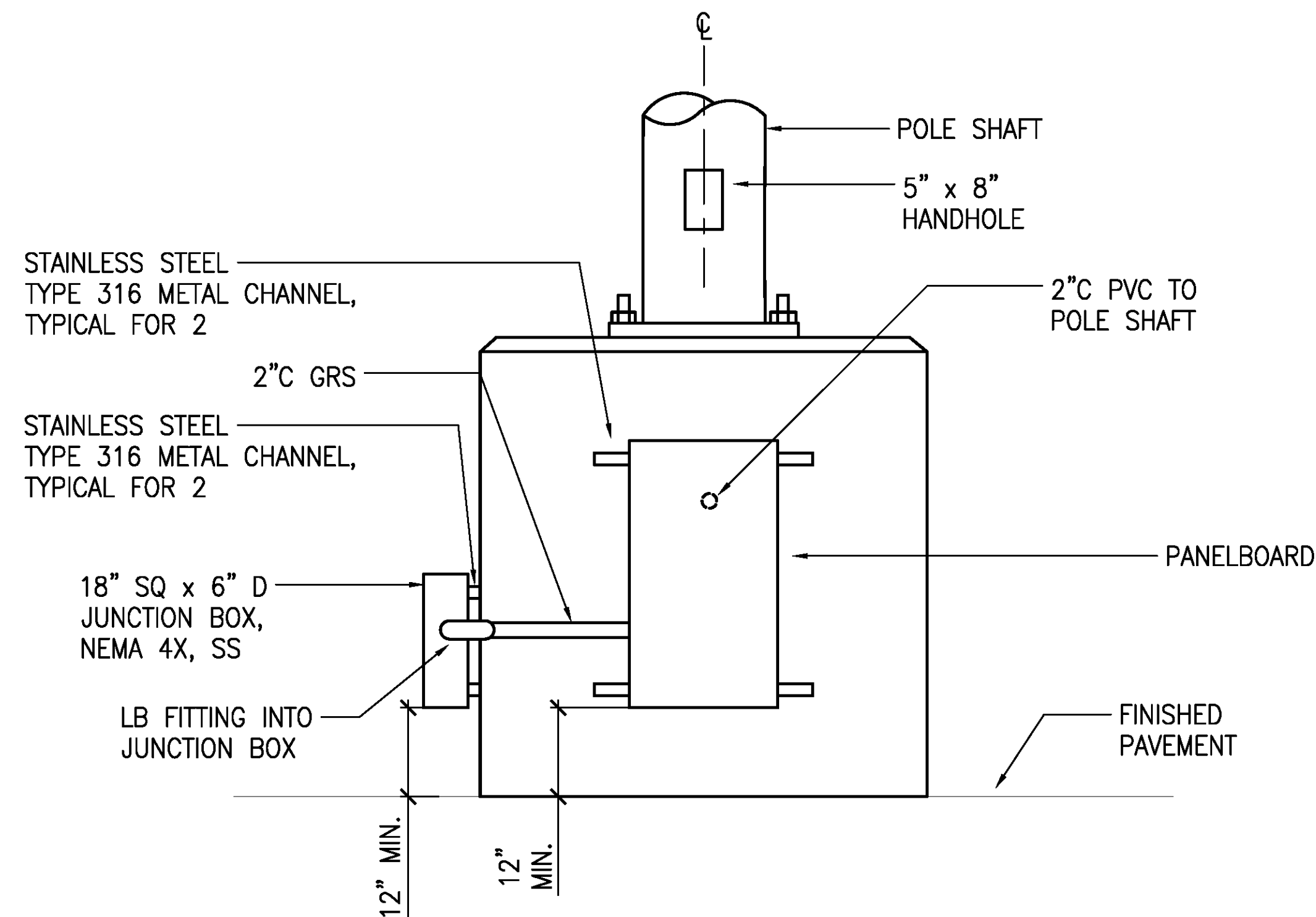
1 TYPICAL AREA LIGHT POLE - SECTION AA
E-5 NOT TO SCALE



3 LIGHT POLE 53-7 - SECTION AA
E-5 NOT TO SCALE



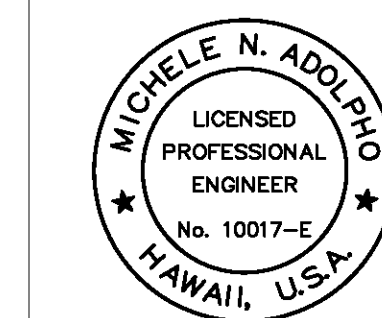
2 TYPICAL AREA LIGHT POLE - WEST ELEVATION
E-5 NOT TO SCALE



4 LIGHT POLE 53-7 - WEST ELEVATION
E-5 NOT TO SCALE

NOTES:

- 1 NUMBER AND LENGTH OF ANCHOR BOLTS PER MANUFACTURER'S SHOP DRAWINGS. ANCHOR BOLTS SHALL BE TYPE 316 STAINLESS STEEL GRADE 30 MINIMUM.
- 2 ALL DASHED WORK IN SECTIONS IS NEW AND CONCEALED IN THE PEDESTAL UNLESS OTHERWISE NOTED.
- 3 INTERCEPT EXISTING 2" PVC CONDUIT WITH NEW CONDUIT UNDER THE FINISHED PAVEMENT (LIGHT POLE 53-8 ONLY). RESTORE FINISHED PAVEMENT AS REQUIRED.
- 4 STUBUP CONDUIT +6" ABOVE FINISHED PAVEMENT (LIGHT POLE 53-8 ONLY).



THIS WORK WAS PREPARED BY ME
OR UNDER MY SUPERVISION
EXP 4-30-24
Michele N. Adolp
ECS, INC.

| REVISION | DATE | DESCRIPTION | BY | APPROVED |
|---|---------------|-------------|----------------------|----------|
| STATE OF HAWAII DEPARTMENT OF TRANSPORTATION HARBORS DIVISION | | | | |
| JOB TITLE REPAIR LIGHT POLES AND PEDESTALS AT PIER 53 HONOLULU HARBOR, OAHU, HAWAII | | | | |
| SHEET TITLE NEW LIGHT POLE BASE DETAIL | | | | |
| DESIGNED BY: JC | DRAWN BY: CAD | | SHEET E-5 | |
| CHECKED BY: M.A. | DATE: 04/2023 | | JOB NUMBER S10859 | |
| SCALE: AS SHOWN | | | 10 of 18 SHTS. | |