

REMOVE LED LUMINAIRE,
STORE, CLEAN, AND REINSTALL ON
NEW LIGHT POLE, TYPICAL FOR 3

REMOVE MOUNTING BRACKET

REMOVE TENON,
TYPICAL

3-FIXTURE BRACKET

REMOVE EXISTING LED LUMINAIRE,
STORE, CLEAN, AND REINSTALL ON
NEW LIGHT POLE, TYPICAL FOR 6

REMOVE MOUNTING BRACKET

REMOVE TENON,
TYPICAL

6-FIXTURE BRACKET



1
E-6

LIGHT POLE MOUNTING BRACKET DEMOLITION PLAN
NOT TO SCALE

EXISTING 7-PIN
PHOTOCELL RECEPTACLE
WITH LIGHT GRID
LIGHTING CONTROL
NODE, TYPICAL FOR 3

EXISTING LED LUMINAIRE TO BE
REINSTALLED ON FIXTURE RING,
TYPICAL FOR 3

2" SCHEDULE 40 PIPE,
TYPICAL

60°, TYPICAL

FIXED RING MOUNTING
PLATE WITH
STAINLESS STEEL
TYPE 316 HARDWARE

3-FIXTURE BRACKET

EXISTING LED LUMINAIRE TO
BE REINSTALLED ON FIXTURE
RING, TYPICAL FOR 6

EXISTING 7-PIN
PHOTOCELL RECEPTACLE
WITH LIGHT GRID
LIGHTING CONTROL
NODE, TYPICAL FOR 6

60°, TYPICAL
30°
TENON

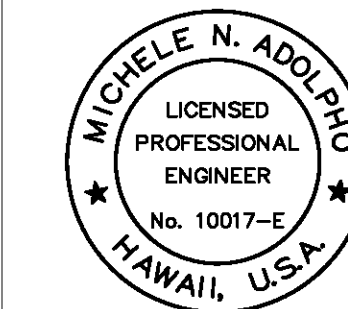
FIXED RING MOUNTING PLATE WITH
STAINLESS STEEL TYPE 316 HARDWARE

6-FIXTURE BRACKET



2
E-6

NEW LIGHT POLE MOUNTING BRACKETS
NOT TO SCALE



THIS WORK WAS PREPARED BY ME
OR UNDER MY SUPERVISION
EXP. 4-30-24
Muh-had
ECS, INC.

REVISION		DATE		DESCRIPTION		BY APPROVED	
STATE OF HAWAII DEPARTMENT OF TRANSPORTATION HARBORS DIVISION							
JOB TITLE REPAIR LIGHT POLES AND PEDESTALS AT PIER 53 HONOLULU HARBOR, OAHU, HAWAII							
SHEET TITLE LIGHT POLE MOUNTING BRACKET – DEMOLITION AND NEW PLANS							
DESIGNED BY: JC		JOB NUMBER S10859		SHEET E-6			
DRAWN BY: CAD				11 of 18 SHTS.			
CHECKED BY: M.A.							
DATE: 04/2023							
SCALE: AS SHOWN							