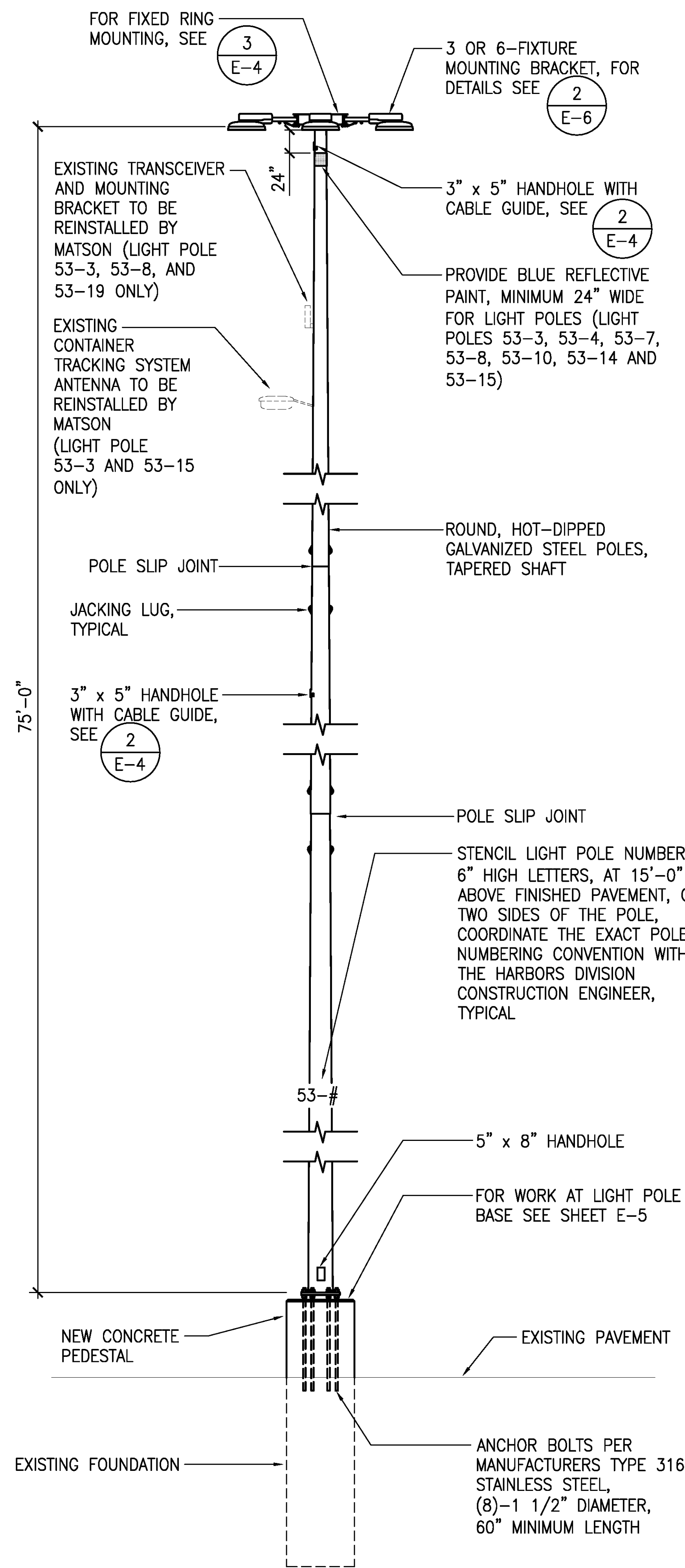
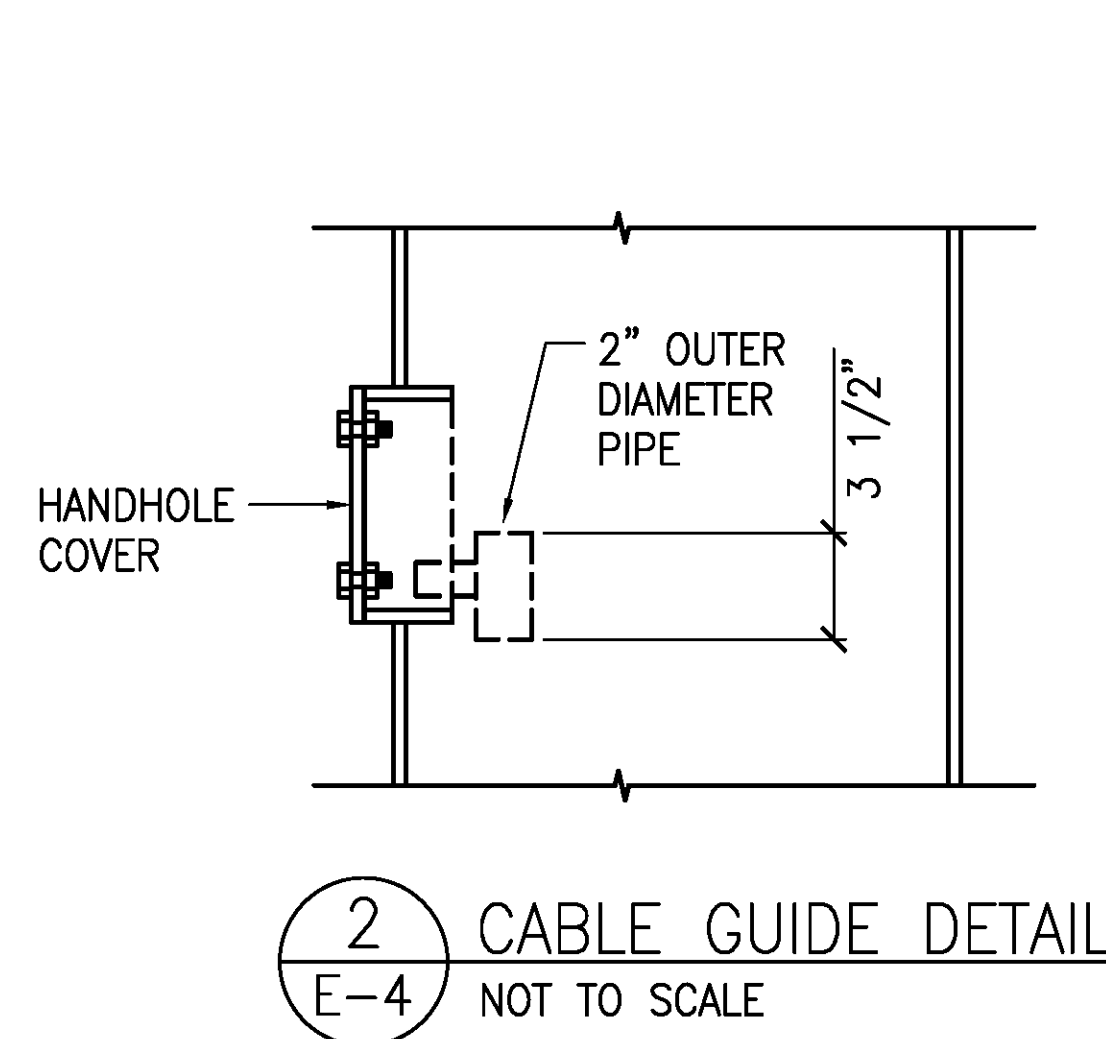


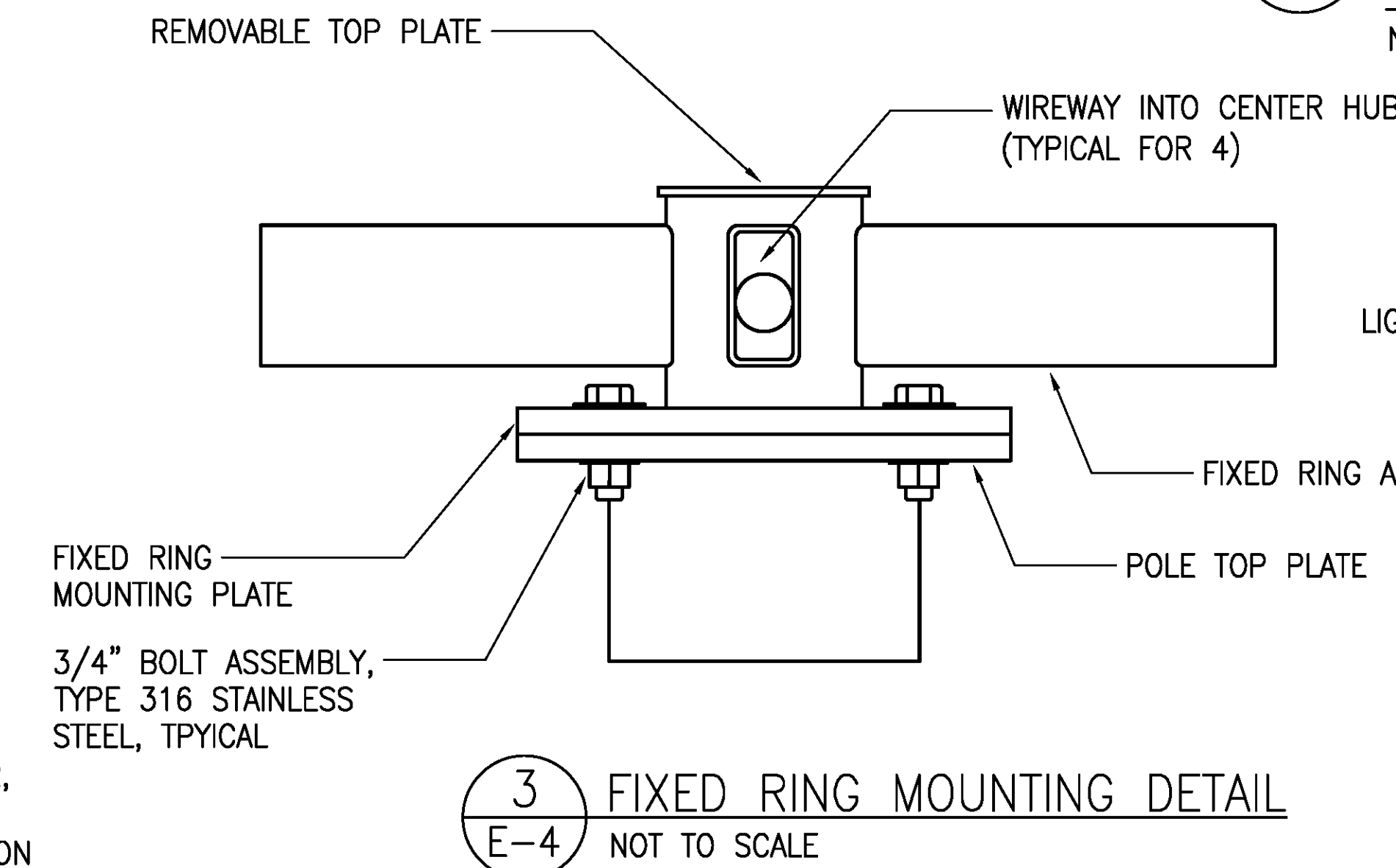
4/25/23-16:50 Y:\044\044.088 Pier 53 Repair Elec Panels\044.088 E-4.D01.dwg



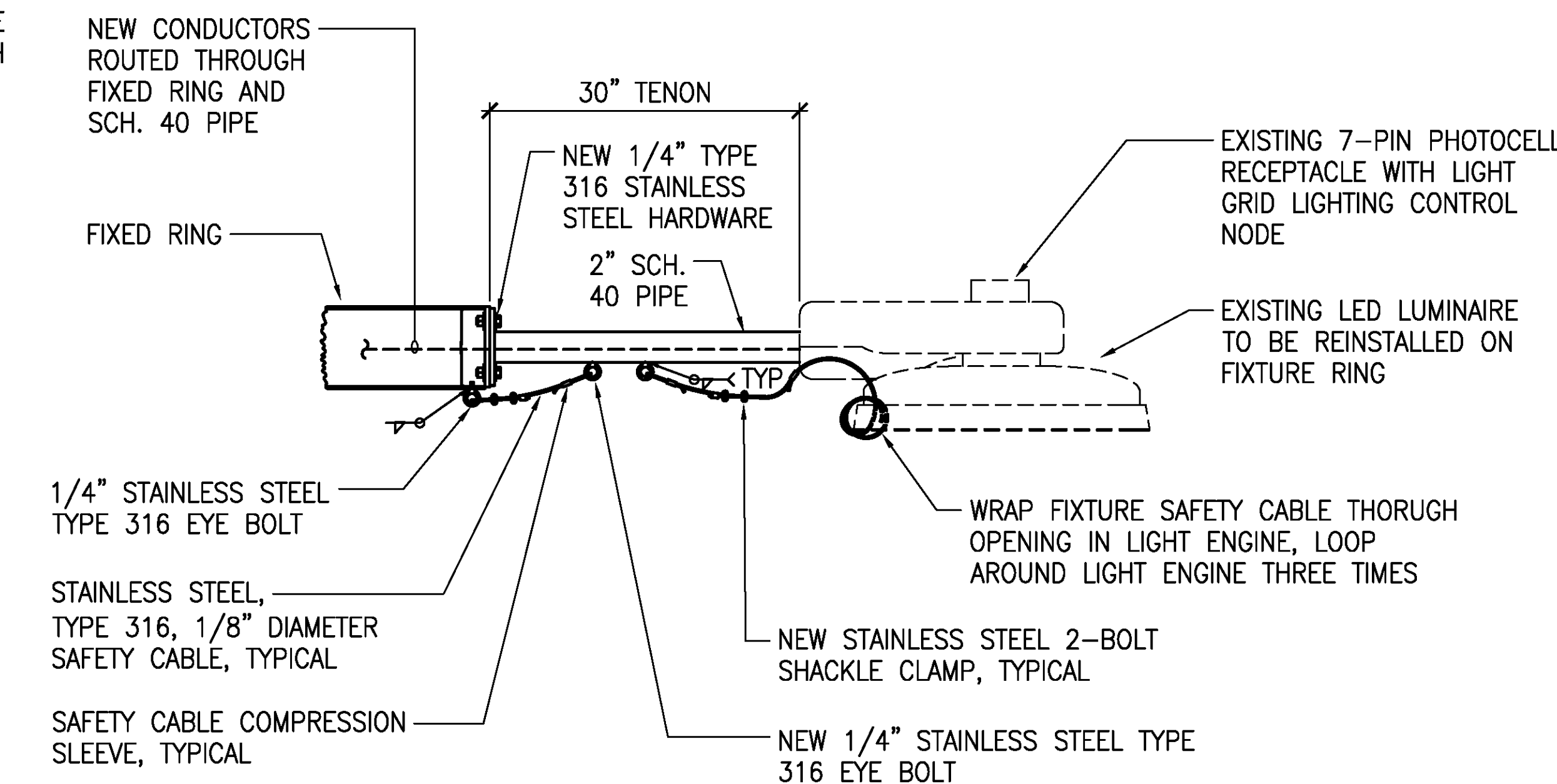
1 LIGHT POLE DETAIL  
E-4 NOT TO SCALE



2 CABLE GUIDE DETAIL  
E-4 NOT TO SCALE



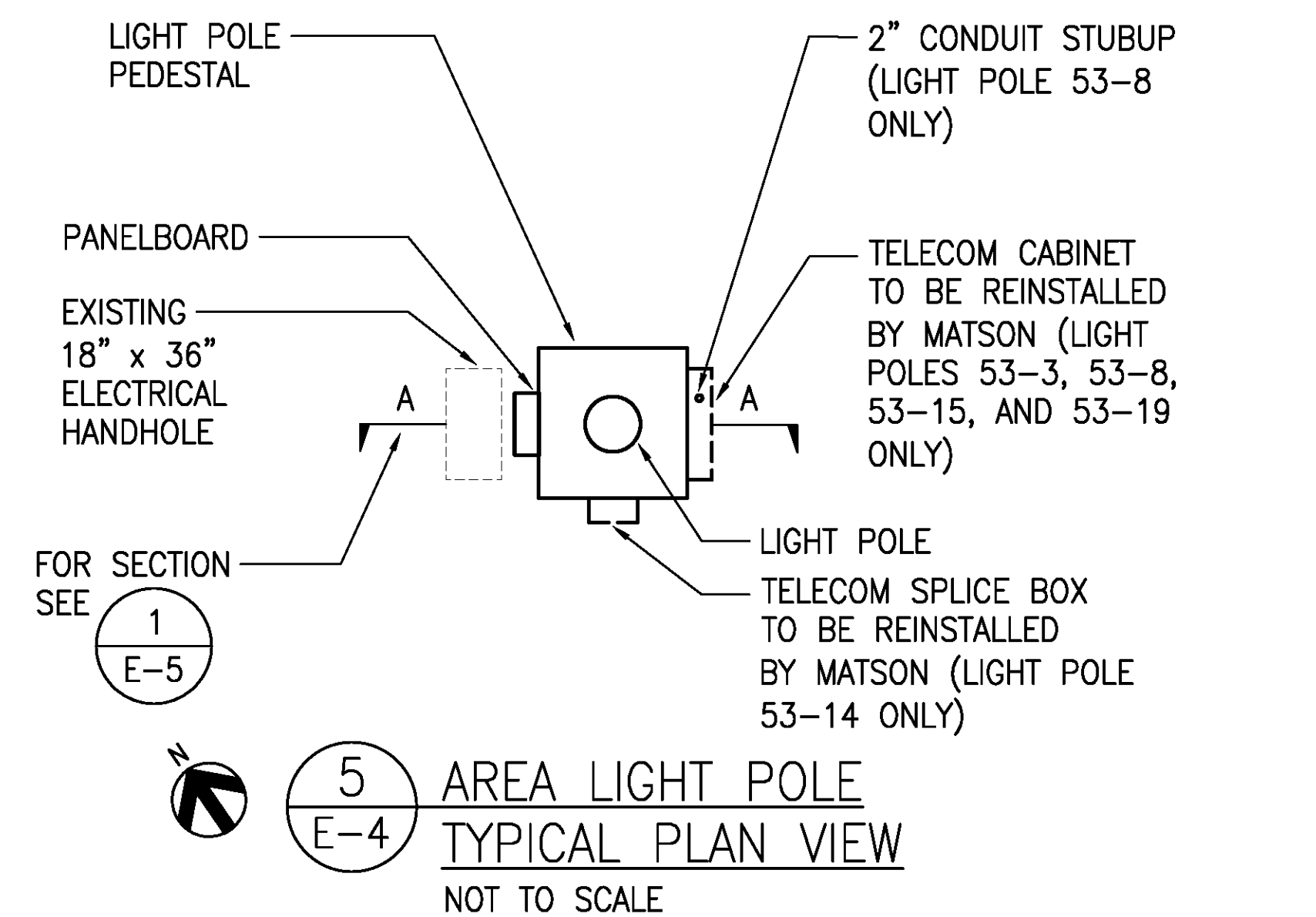
3 FIXED RING MOUNTING DETAIL  
E-4 NOT TO SCALE



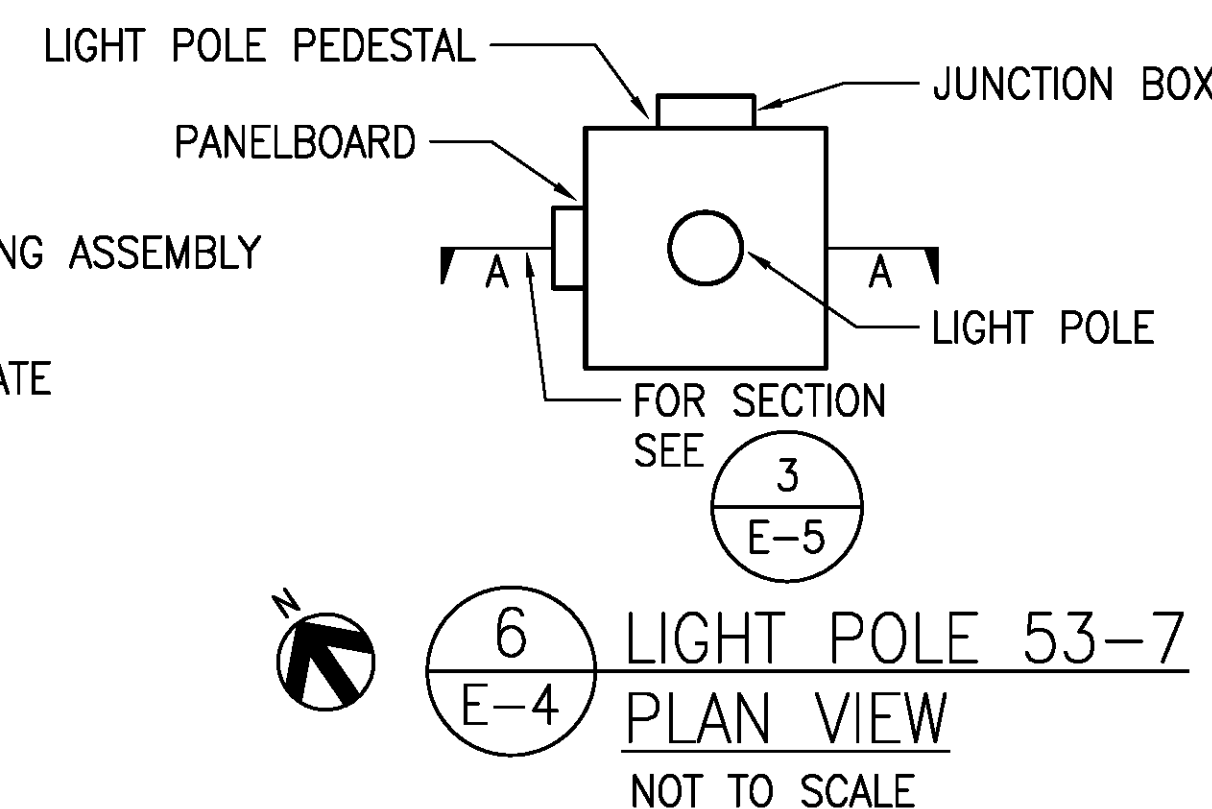
NOTES:

- ONE LUMINAIRE AND SAFETY CABLE ATTACHMENT SHOWN FOR CLARITY. SAFETY CABLE ATTACHMENT TO BE PROVIDED TO EACH LUMINAIRE.
- EYEBOLT AND SAFETY CABLE SHALL SUPPORT 3 TIMES THE WEIGHT OF THE LUMINAIRE.

4 FIXTURE & TENON SAFETY CABLE DETAIL  
E-4 NOT TO SCALE



5 AREA LIGHT POLE TYPICAL PLAN VIEW  
E-4 NOT TO SCALE



6 LIGHT POLE 53-7 PLAN VIEW  
E-4 NOT TO SCALE

LIGHT POLE NOTES (THIS SHEET ONLY):

- MATERIAL SPECIFICATIONS:  
POLE SHAFT - ASTM A572 GRADE 65  
BASE PLATE - ASTM A572 GRADE 50  
STRUCTURAL PLATES - ASTM A572 GRADE 50  
MISC. PLATES - ASTM A36  
ANCHOR BOLTS - TYPE 316 STAINLESS STEEL GRADE 30 MIN.  
NUTS AND WASHERS - TYPE 316 STAINLESS STEEL
- ENTIRE STANDARD INCLUDING LUMINAIRE MOUNTING BRACKET SHALL BE HOT DIP GALVANIZED IN ACCORDANCE WITH ASTM A-123.
- WELDING SHALL BE IN ACCORDANCE WITH AWS D1.1 MOST RECENT EDITION.
- ALL MOUNTING HARDWARE SHALL BE STAINLESS STEEL TYPE 316.
- DESIGN SPEED: AASHTO LTS-6, FATIGUE CATEGORY 1. 150 MPH BASIC WIND SPEED, 3 SEC GUST. 1.0 IMPORTANCE FACTOR, 1.14 GUST EFFECT FACTOR INCLUDING BRACKET AND LUMINAIRES.
- LONGITUDINAL SEAM WELDS TO BE MINIMUM 60% PENETRATION. BOTTOM 6" AT BASE PLATE AND FEMALE PORTION OF SLIP JOINT +6" TO BE 100% PENETRATION.
- FULL PENETRATION WELDS TO BE 100% UT INSPECTED PRIOR TO GALVANIZING.
- REFER TO MANUFACTURER'S GENERAL INSTALLATION INSTRUCTIONS PRIOR TO ASSEMBLY. COORDINATE INSTALLATION REQUIREMENTS WITH THE ACTUAL EQUIPMENT SUPPLIED.
- MANUFACTURER TO PROVIDE PAPER AND METAL ANCHOR BOLT TEMPLATES.
- STEEL TO BE MELTED AND MANUFACTURED IN THE USA.
- PAINT LIGHT POLE ASSEMBLY INCLUDING EXPOSED PORTIONS OF THE ANCHOR BOLTS, NUTS, AND WASHERS, POLE INTERIOR UP TO FOUR FEET (MEASURED UPWARDS FROM THE BASE PLATE), FIXTURE CROSSARM, AND CONCRETE PEDESTAL IN ACCORDANCE WITH PAINTING SPECIFICATIONS. DO NOT FIELD-PAINT LUMINAIRES.

		REVISION		DATE	DESCRIPTION	BY	APPROVED
		STATE OF HAWAII DEPARTMENT OF TRANSPORTATION HARBORS DIVISION					
JOB TITLE		REPAIR LIGHT POLES AND PEDESTALS AT PIER 53 HONOLULU HARBOR, OAHU, HAWAII					
SHEET TITLE		LIGHT POLE DETAIL					
DESIGNED BY: JC		DRAWN BY: CAD		CHECKED BY: M.A.		JOB NUMBER	
DATE: 04/2023		SCALE: AS SHOWN		SHEET		E-4	
THIS WORK WAS PREPARED BY ME OR UNDER MY SUPERVISION EXP. 4-30-24 ECS, INC. 				9 of 18 SHEETS		S10859	