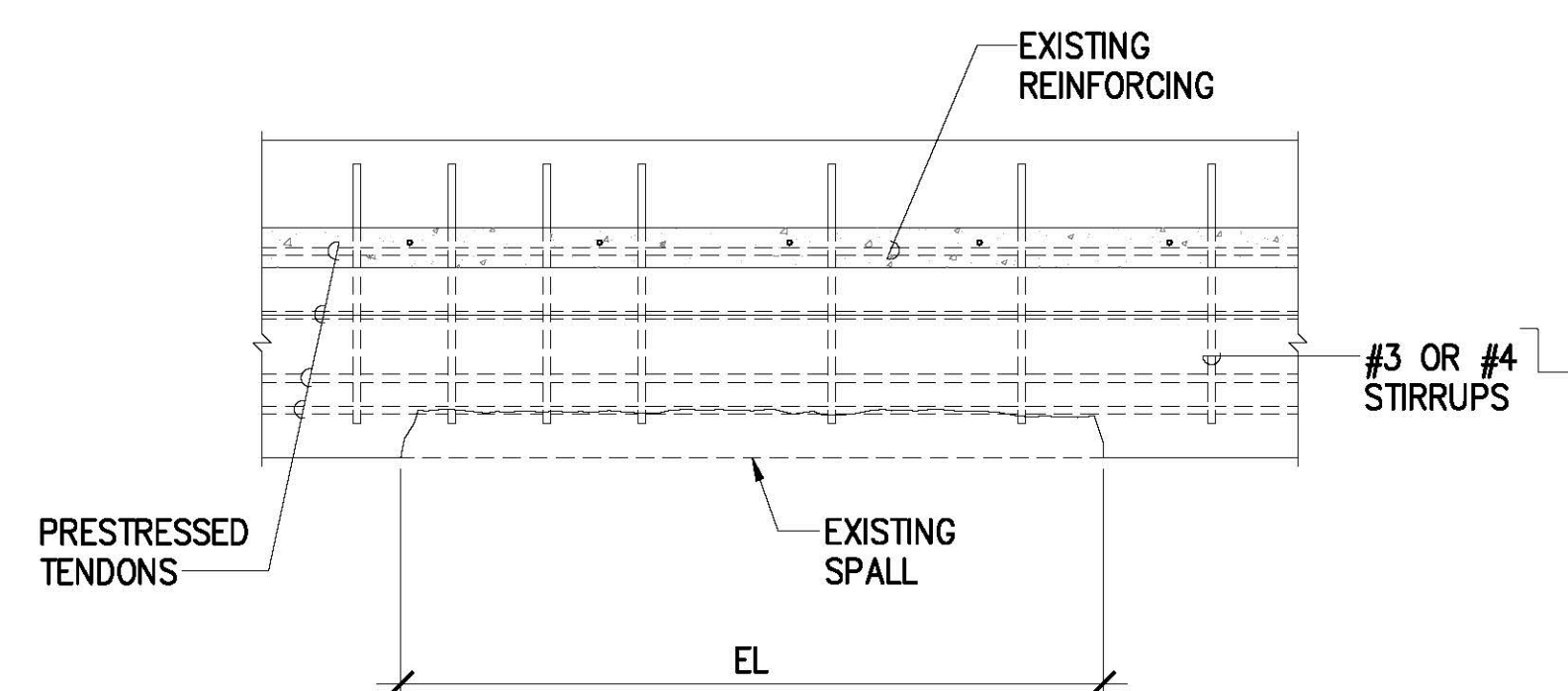
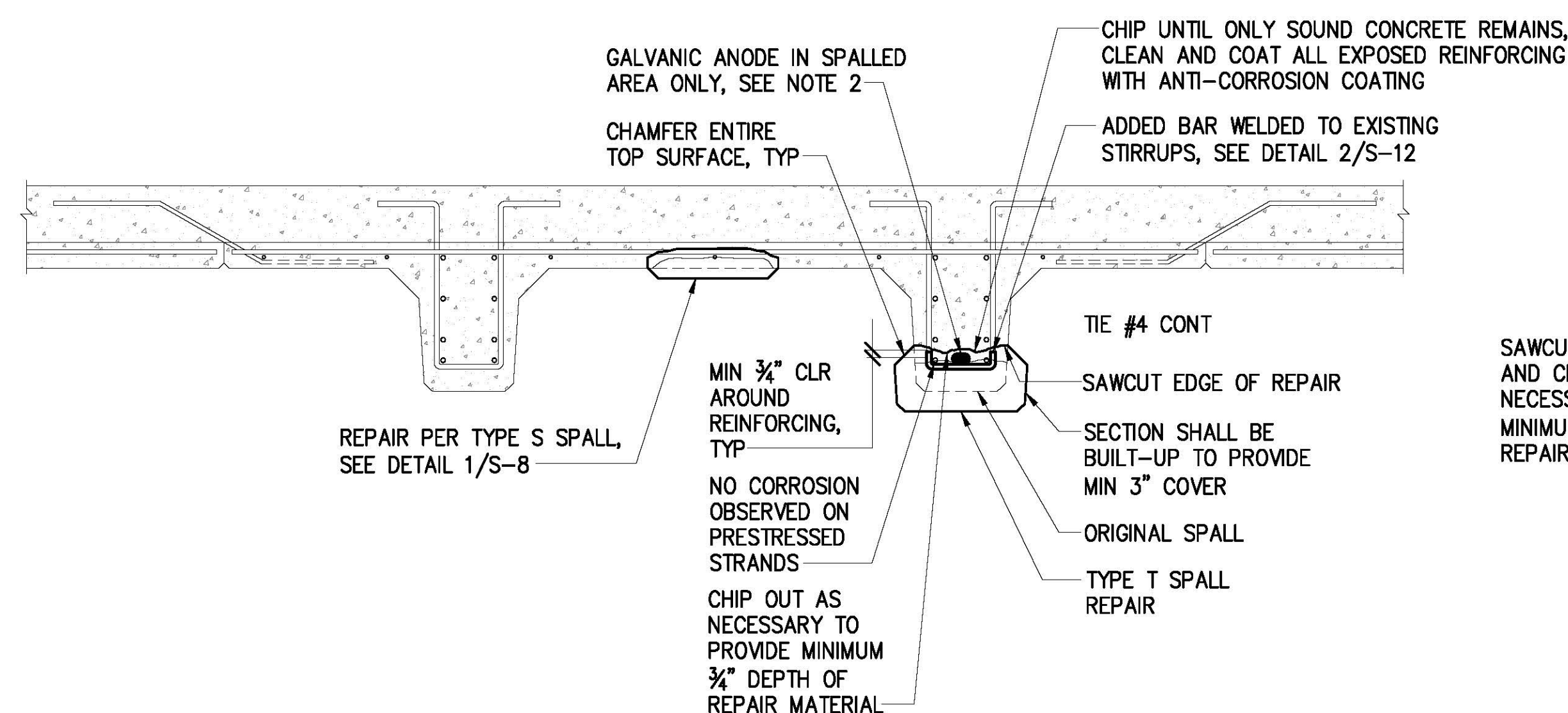


TYPICAL SECTION

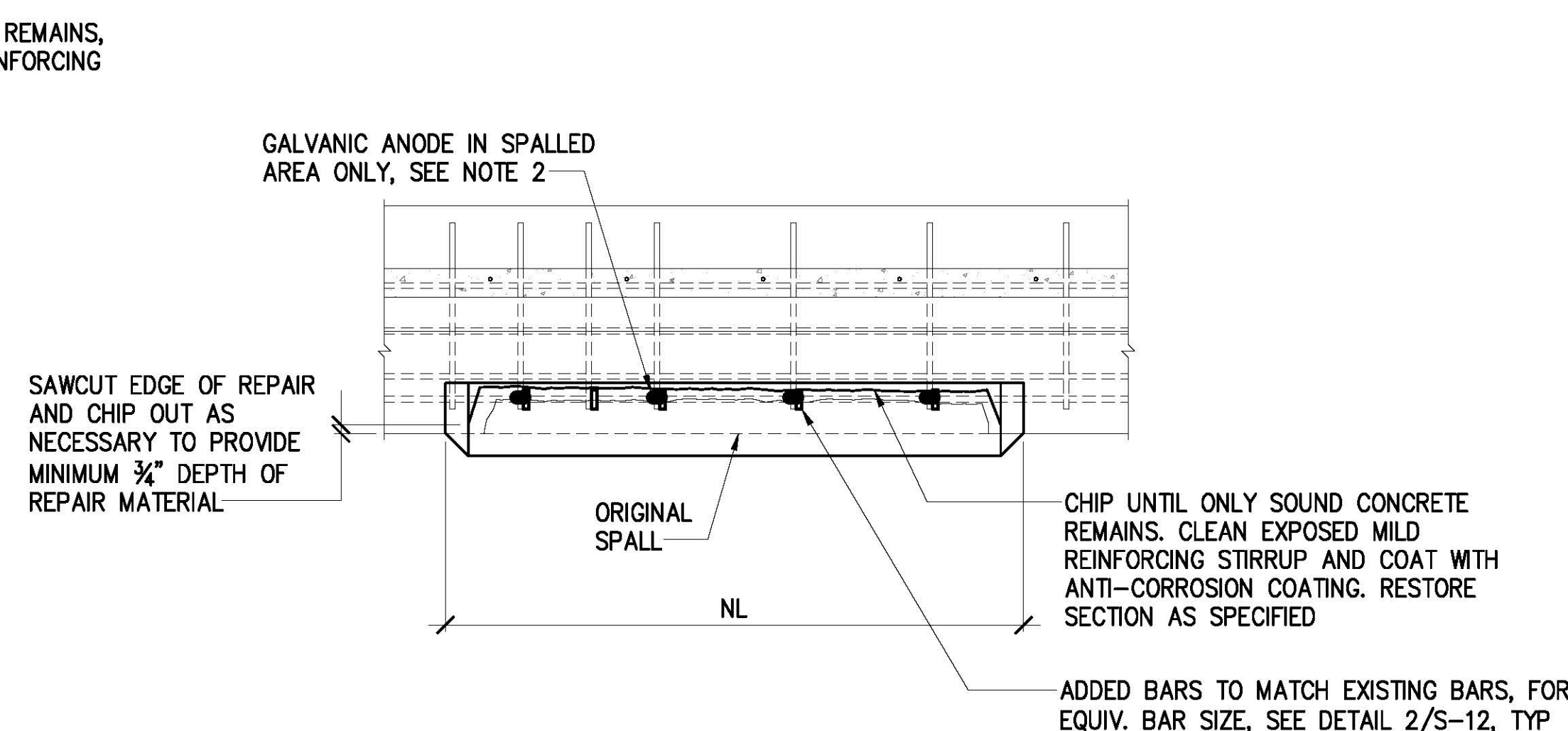


TYPE T SPALL SIDE ELEVATION

EXISTING CONDITION



TYPICAL SECTION



TYPE T SPALL SIDE ELEVATION

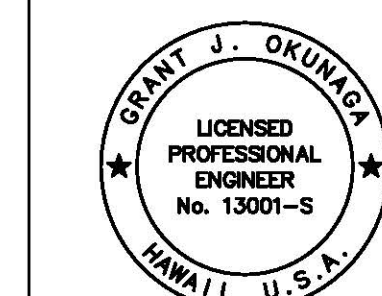
REPAIRED CONDITION

CALCULATION OF PAY LENGTH:

EL = EXISTING LENGTH OF SPALL
NL = PAY LENGTH FOR TYPE T SPALL

NOTES:

1. CONCRETE TOPPING REINFORCING STEEL NOT SHOWN FOR CLARITY.
2. GALVANIC ANODES SHALL BE INSTALLED AT 17" MAX ALONG LENGTH OF REPAIR.
3. ANY PRESTRESSED STRAND WHICH HAS LOST MORE THAN 20 PERCENT OF ITS CROSS-SECTIONAL AREA SHALL BE CALLED TO THE ATTENTION OF THE HARBORS DIVISION CONSTRUCTION ENGINEER.
4. TYPE S SPALLS ON DOUBLE TEES SHALL BE REPAIRED AND PAID FOR SIMILAR TO TYPICAL TYPE S SPALLS, SEE DETAIL 1/S-8.



THIS WORK WAS PREPARED BY ME
OR UNDER MY SUPERVISION
EXP. 4-30-24
MKE ASSOCIATES LLC

REVISION	DATE	DESCRIPTION	BY	APPROVED
STATE OF HAWAII				
DEPARTMENT OF TRANSPORTATION				
HARBORS DIVISION				
JOB TITLE				
SUBSTRUCTURE REPAIRS AT PIERS 16 AND 17				
HONOLULU HARBOR, OAHU, HAWAII				
SHEET TITLE				
PRESTRESS DOUBLE TEE SPALL REPAIR DETAILS				
DESIGNED BY: GO		JOB NUMBER		SHEET
DRAWN BY: DL				S-10
CHECKED BY: GW				
DATE: 04/2023				
SCALE: AS SHOWN		12 OF 14 SHEETS		