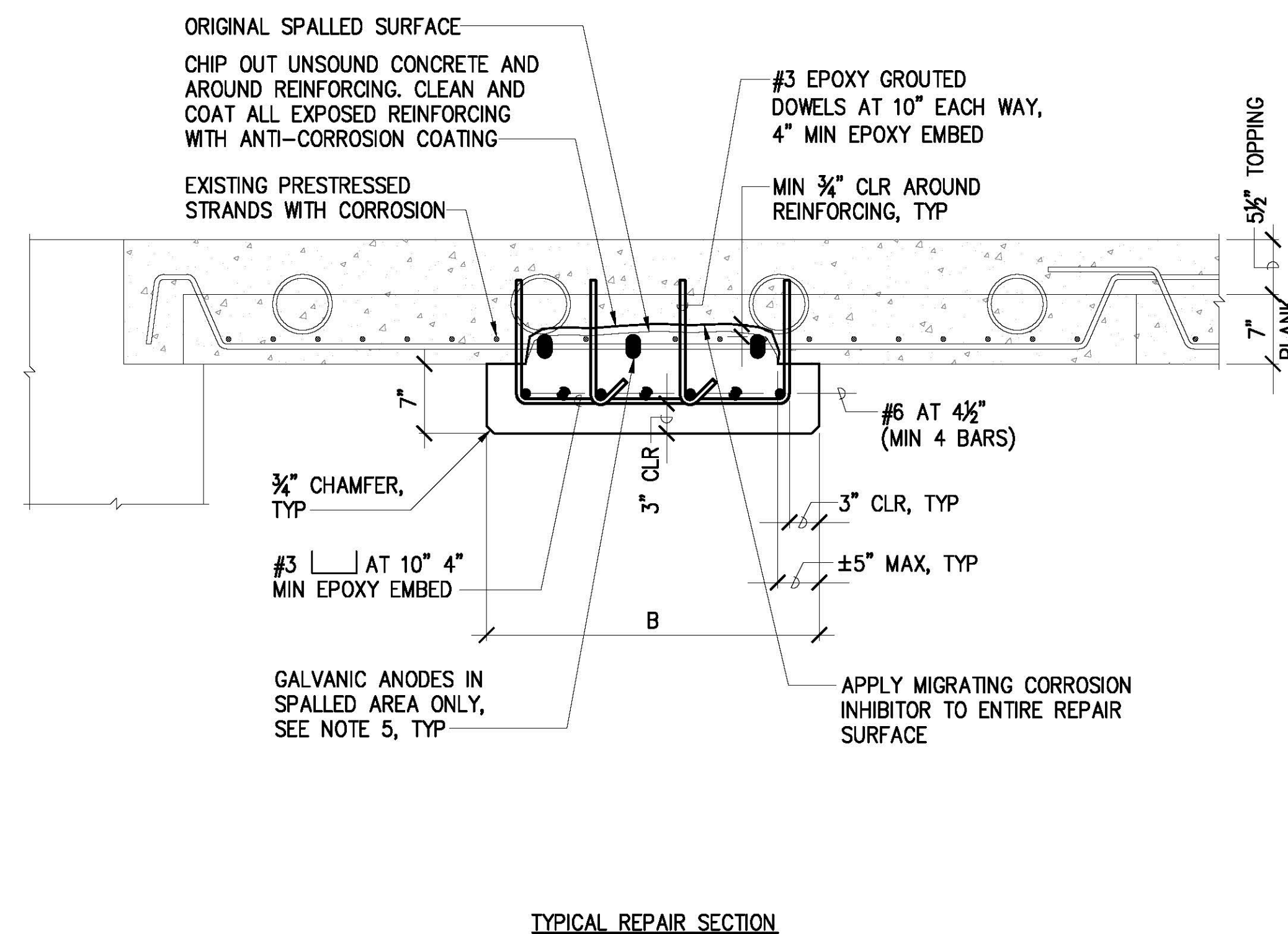
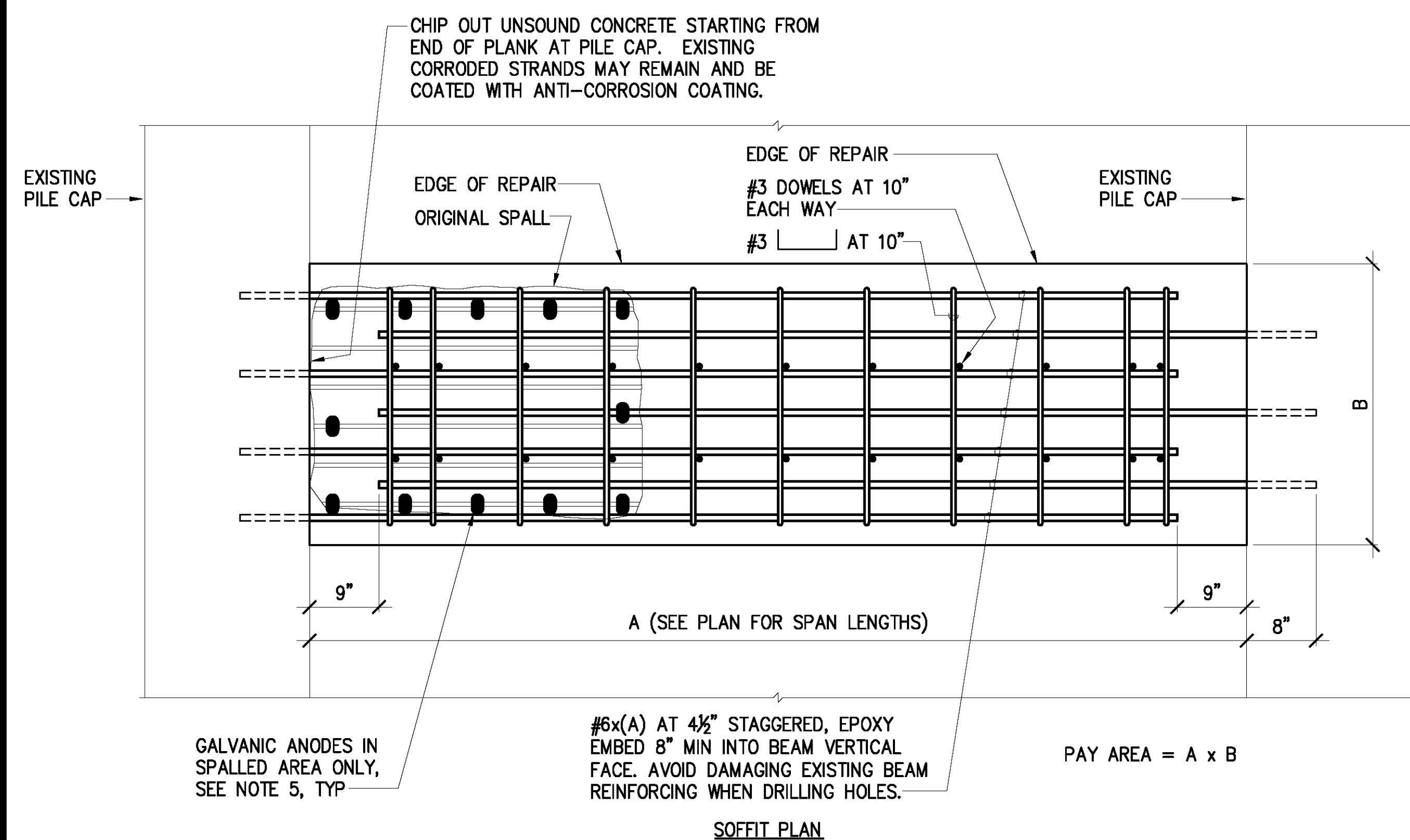


EXISTING CONDITION



REPAIRED CONDITION

NOTES:

- REPAIR WIDTH (B) SHALL BE WIDER THAN ORIGINAL SPALL WIDTH (Y).
- REPAIR LENGTH (A) SHALL EXTEND OVER ENTIRE CLEAR DISTANCE BETWEEN BEAMS.
- AVOID DAMAGING EXISTING STRANDS WHEN DRILLING HOLES FOR DOWELS.
- DOWELS ARE NOT REQUIRED AT LOCATIONS WHERE INSTALLATION IS NOT POSSIBLE DUE TO FULL DEPTH REPAIR OF THE EXISTING SLAB.
- GALVANIC ANODES SHALL BE INSTALLED AT 17" MAX AROUND THE PERIMETER OF THE SPALLED AREA. FOR SPALLS LESS THAN 1 SQUARE FOOT IN SIZE, INSTALL ONE GALVANIC ANODE IN SPALLED AREA.
- SHALLOW PRECAST PLANK SOFFIT SPALLS WITH NO EXPOSED PRESTRESSING STRANDS MAY BE REPAIRED PER DETAIL 1/S-12.

		REVISION DATE DESCRIPTION BY APPROVED	
THIS WORK WAS PREPARED BY ME OR UNDER MY SUPERVISION EXP. 4-30-24 MKE ASSOCIATES LLC		STATE OF HAWAII DEPARTMENT OF TRANSPORTATION HARBORS DIVISION JOB TITLE SUBSTRUCTURE REPAIRS AT PIERS 16 AND 17 HONOLULU HARBOR, OAHU, HAWAII SHEET TITLE PRECAST PLANK SOFFIT SPALL REPAIR DETAILS DESIGNED BY: GO DRAWN BY: DL CHECKED BY: GM DATE: 04/2023 SCALE: AS SHOWN	
JOB NUMBER S10852		SHEET S-11 13 OF 14 SHTS.	