

REPAIR SPALLED/DELAMINATED CONCRETE AT PILE CAP, SEE DETAIL 1/S-4

REPLACE NUT WHEN MISSING. NUTS MAY BE WELDED TO PLATE WASHERS AT ANCHOR BOLTS (15 TOTAL)

FENDER, SEE NOTES 2 AND 3 BELOW

TOP OF CURB
ELEV = +8.00'±

1/2" DIA ANCHOR BOLT, TYP

ANCHOR BOLT TO REMAIN, TYP

REPAIR SPALLED/DELAMINATED CONCRETE AT PILE CAP, SEE DETAIL 1/S-4

SHEET PILE VERT BARS

STIRRUPS AT 12"

OUTBOARD FACE OF CONCRETE SHEET PILE

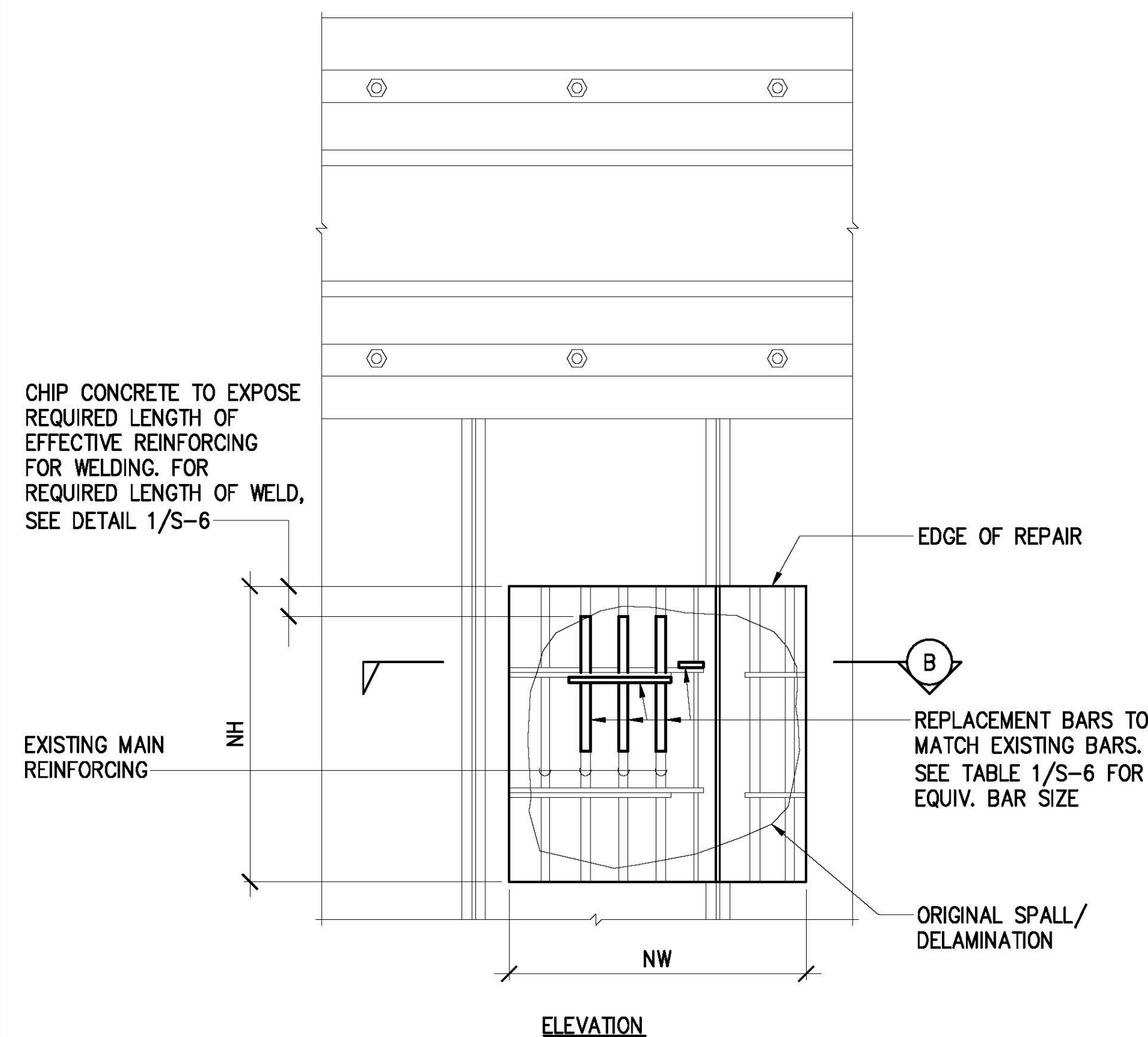
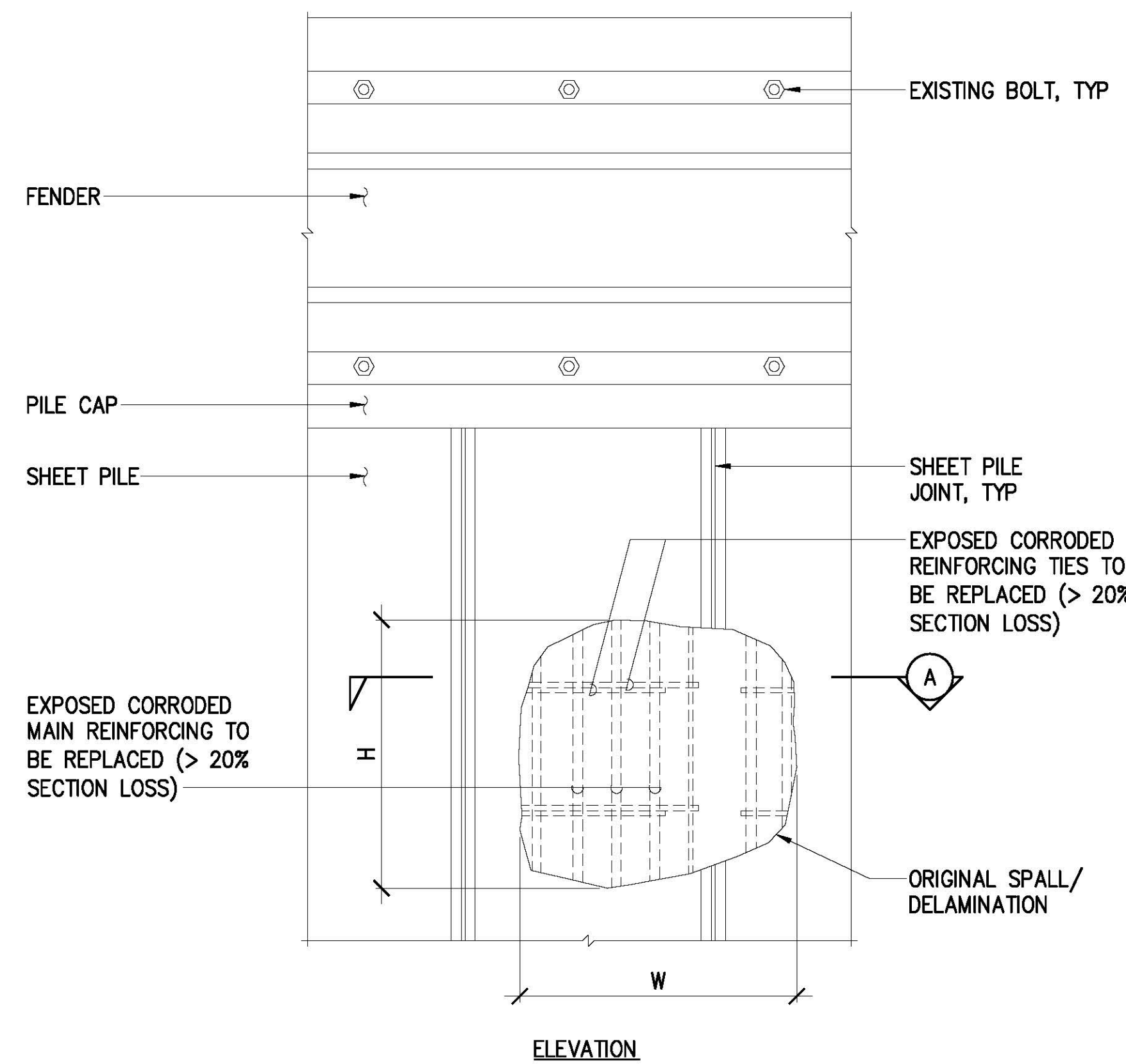
CONCRETE SHEET PILE REPAIR, SEE DETAIL 2/S-3

MLLW
ELEV = 0.00'

NOTES:

- EXISTING DRAWING REPRESENT THE ENGINEER'S BEST KNOWLEDGE OF THE REPAIR AREA. CONTRACTOR SHALL VERIFY FIELD CONDITIONS AND REPORT ANY DISCREPANCIES TO THE CONSTRUCTION ENGINEER BEFORE STARTING THE WORK.
- CONTRACTOR SHALL REMOVE EXISTING FENDERS AS NECESSARY TO PERFORM THE WORK AND REINSTALL TO MATCH EXISTING CONDITION UPON COMPLETION OF THE WORK.
- PIER 39C SECTION IS SIMILAR EXCEPT FENDER SYSTEM CONSISTS OF TIRE FENDERS.

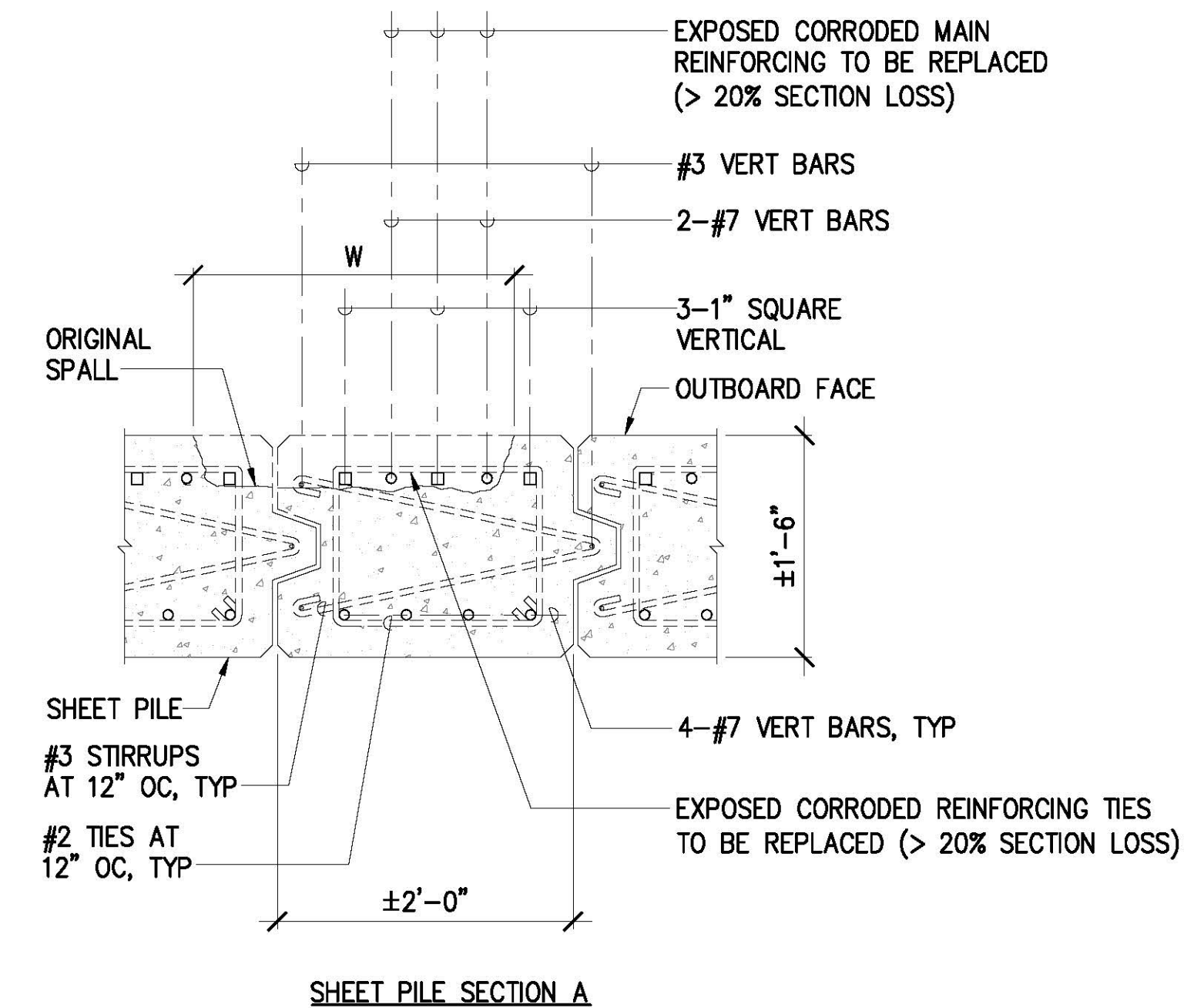
1
S-3
TYPICAL EXISTING PIER SECTION
SCALE: = 1" = 1'-0"



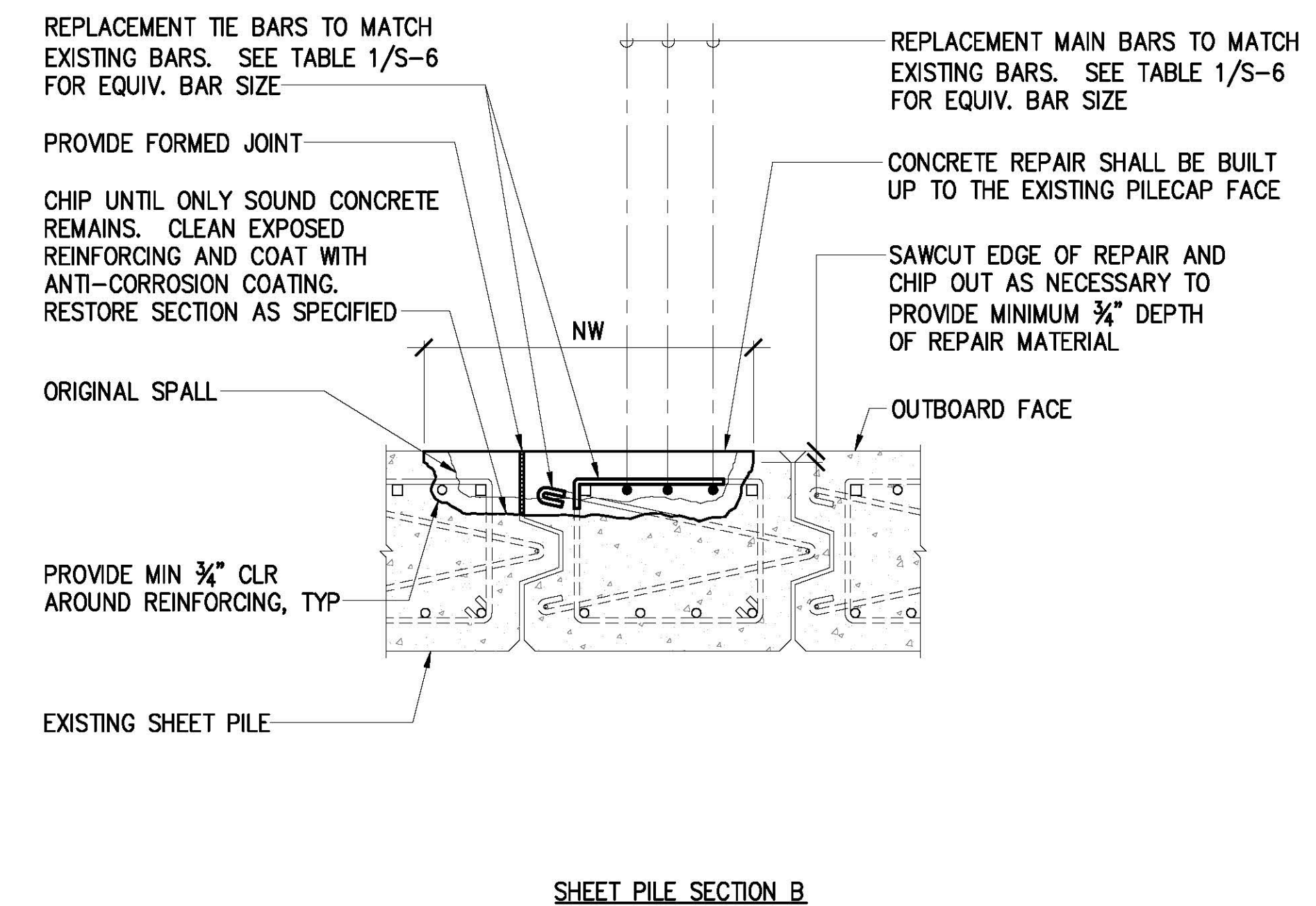
NOTE:

- SHEET PILE SPALL REPAIRS GENERALLY OCCUR ABOVE MLLW, HOWEVER SOME SPALLS AND DELAMINATIONS MAY OCCUR AT OR JUST BELOW THE WATERLINE. THE CONTRACTOR SHALL TAKE NECESSARY PRECAUTIONS TO PREVENT CONSTRUCTION DEBRIS FROM ENTERING THE WATER.

2
S-3
SHEET PILE SPALL REPAIRS (TYPE SPR)
NOT TO SCALE



EXISTING CONDITION

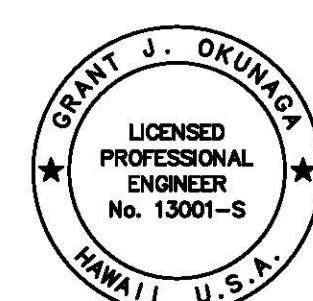


REPAIRED CONDITION

CALCULATION OF PAY AREA:

W = ORIGINAL WIDTH OF SPALL
H = ORIGINAL HEIGHT OF SPALL
NW = WIDTH OF REPAIR
NH = HEIGHT OF REPAIR

PAY AREA = NW x NH

 THIS WORK WAS PREPARED BY ME OR UNDER MY SUPERVISION EXP. 4-30-24 <i>Grant J. Okunaga</i> MKE ASSOCIATES LLC	REVISION		DATE	DESCRIPTION	BY	APPROVED
	STATE OF HAWAII DEPARTMENT OF TRANSPORTATION HARBORS DIVISION					
JOB TITLE SHEET PILE AND BOLLARD REPAIRS AT PIER 39 HONOLULU HARBOR, OAHU, HAWAII						
SHEET TITLE TYPICAL PIER SECTION AND SHEET PILE SPALL REPAIR DETAILS						
DESIGNED BY: AJ	DRAWN BY: DL		CHECKED BY: GO		JOB NUMBER S10848	
DATE: 03/2023		SCALE: AS SHOWN		SHEET S-3 5 OF 8 SHTS.		