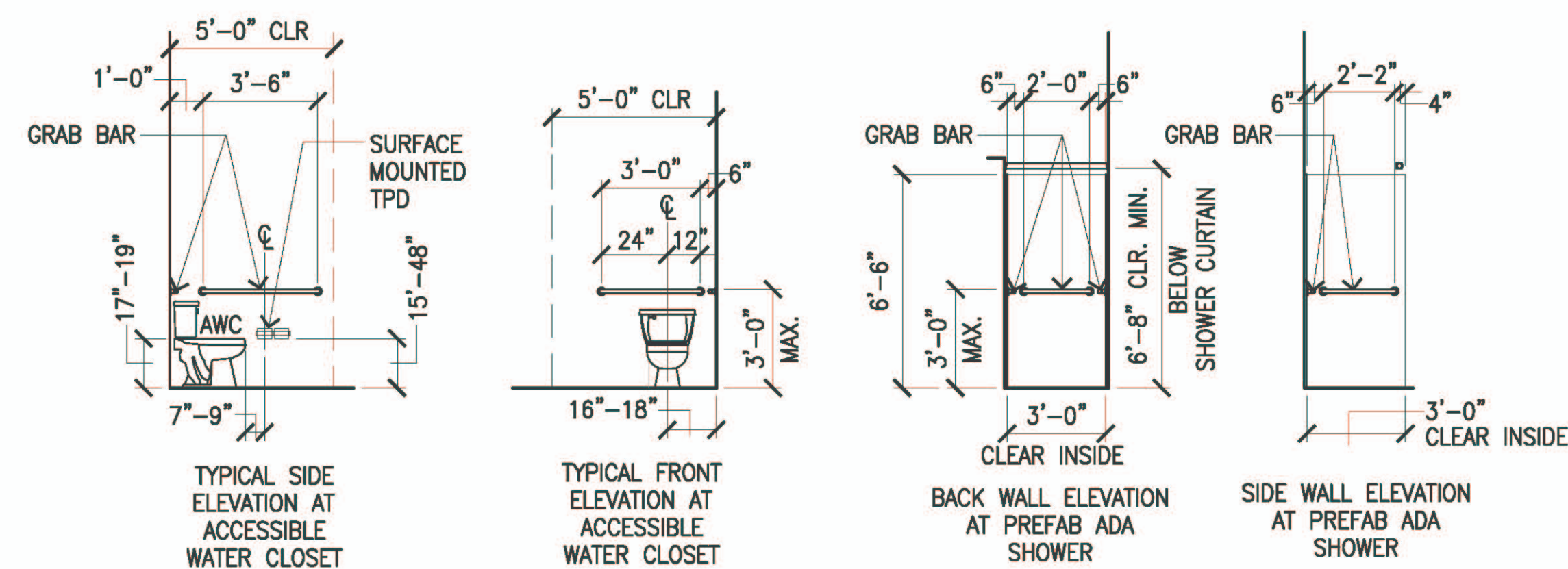


1 INTERIOR ELEVATIONS

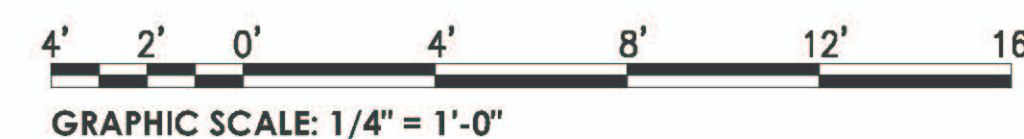
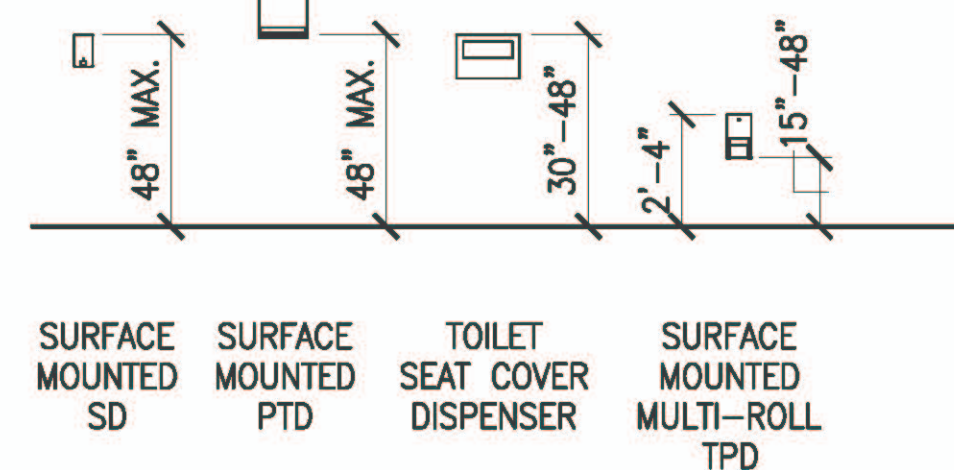
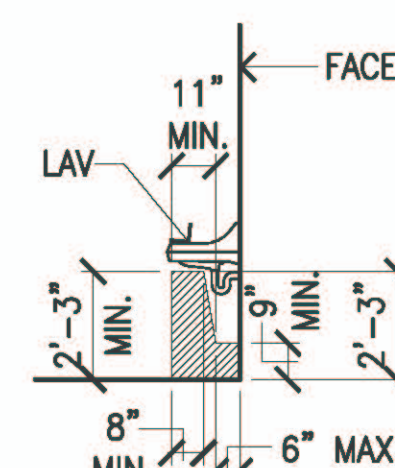
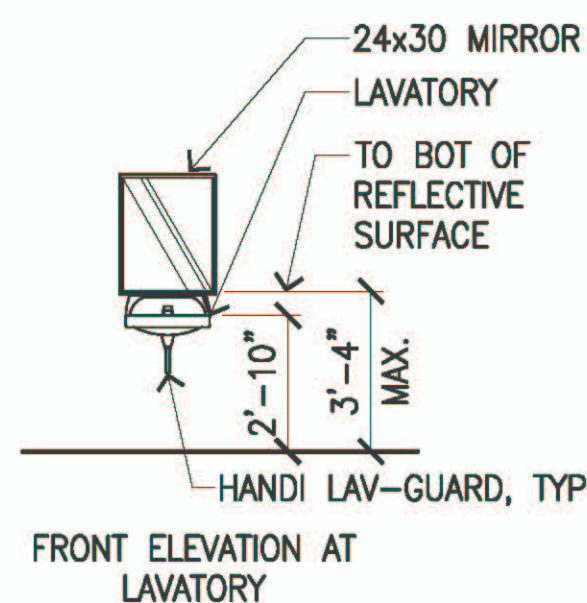
A-3 SCALE: 1/4" = 1'-0"



2 TYPICAL MOUNTING HEIGHTS

A-3 SCALE: 1/4" = 1'-0"

- GENERAL NOTES:**
- CONTRACTOR TO VERIFY ADA REQUIREMENTS PER MANUFACTURER AND 2004 ADAAG GUIDELINES.
 - PROVIDE BACKING/BLOCKING AS REQ'D.



NOTES:
INSTALLATION OF NEW MIRRORS TO COMPLY 2004 ADAAG SECTION 603.3 MIRRORS. MIRRORS LOCATED ABOVE LAVATORIES OR COUNTERTOPS SHALL BE INSTALLED WITH THE BOTTOM EDGE OF THE REFLECTING SURFACE 40 INCHES MAXIMUM ABOVE THE FINISH FLOOR OR GROUND. MIRRORS NOT LOCATED ABOVE LAVATORIES OR COUNTERTOPS SHALL BE INSTALLED WITH BOTTOM EDGE OF THE REFLECTING SURFACE 35 INCHES MAXIMUM ABOVE THE FINISH FLOOR OR GROUND.

A MINIMUM CLEAR DOOR OPENING WIDTH OF 32-INCH SHALL BE PROVIDED AT THE DOOR LEADING TO AN ACCESSIBLE TOILET COMPARTMENT. THIS CLEAR WIDTH SHALL BE MEASURED BETWEEN THE EDGE OF THE DOOR BUMPER/KEEPER AND THE FACE OF THE DOOR WHEN OPENED 90 DEGREES. DOOR SHALL BE SELF-CLOSING.

ADAAG 604.8.1.2 DOORS. TOILET COMPARTMENT DOORS, INCLUDING DOOR HARDWARE, SHALL COMPLY WITH ADAAG 404 EXCEPT THAT IF THE APPROACH IS TO THE LATCH SIDE OF THE COMPARTMENT DOOR, CLEARANCE BETWEEN THE DOOR SIDE OF THE COMPARTMENT AND ANY OBSTRUCTION SHALL BE 42-INCHES MINIMUM. DOORS SHALL BE LOCATED IN THE FRONT PARTITION OR IN THE SIDE WALL OR PARTITION FARTHEST FROM THE WATER CLOSET. WHERE LOCATED IN THE FRONT PARTITION, THE DOOR OPENING SHALL BE 4-INCHES MAXIMUM FROM THE SIDE WALL OR PARTITION FARTHEST FROM THE WATER CLOSET. WHERE LOCATED IN THE SIDE WALL OR PARTITION, THE DOOR OPENING SHALL BE 4-INCHES MAXIMUM FROM THE FRONT PARTITION. THE DOOR SHALL BE SELF-CLOSING. A DOOR PULL COMPLYING WITH ADAAG 404.2.7 SHALL BE PLACED ON BOTH SIDES OF THE DOOR NEAR THE LATCH. TOILET COMPARTMENT DOORS SHALL NOT SWING INTO THE MINIMUM REQUIRED COMPARTMENT AREA.

ADAAG 609.4 POSITION OF GRAB BARS. GRAB BARS SHALL BE INSTALLED IN A HORIZONTAL POSITION, 33 INCHES (840 MM) MINIMUM AND 36 INCHES (915 MM) MAXIMUM ABOVE THE FINISH FLOOR MEASURED TO THE TOP OF THE GRIPPING SURFACE, EXCEPT THAT AT WATER CLOSETS FOR CHILDREN'S USE COMPLYING WITH 604.9, GRAB BARS SHALL BE INSTALLED IN A HORIZONTAL POSITION 18 INCHES (455 MM) MINIMUM AND 27 INCHES (685 MM) MAXIMUM ABOVE THE FINISH FLOOR MEASURED TO THE TOP OF THE GRIPPING SURFACE. THE HEIGHT OF THE LOWER GRAB BAR ON THE BACK WALL OF A BATHTUB SHALL COMPLY WITH 607.4.1.1 OR 607.4.2.1.

THE STRUCTURAL STRENGTH OF GRAB BARS, FASTENERS, AND MOUNTING DEVICES ATTACHED TO PARTITIONS, STILES, AND PILASTERS SHALL BE IN ACCORDANCE WITH ADAAG 609.8.

DOOR HINGES: STAINLESS STEEL, MINIMUM 16 GAUGE, CONTINUOUS THE FULL HEIGHT OF THE DOOR, THROUGH-BOLTED TO THE DOOR AND STILE WITH TWELVE (12) THEFT-RESISTANT ONE-WAY STAINLESS STEEL SCREWS AT APPROXIMATELY 12-INCHES ON CENTER.

DOOR PULLS: HANDICAP ACCESSIBLE TOILET STALL DOORS SHALL BE FURNISHED WITH U-SHAPED DOOR PULLS COMPLYING WITH ADAAG 404.2.7 ON BOTH SIDES OF THE DOOR ADJACENT TO THE LATCH.

		REV DATE DESCRIPTION BY APPROVED	
STATE OF HAWAII DEPARTMENT OF TRANSPORTATION HARBORS DIVISION			
JOB TITLE REPAIR HARBOR AGENT'S OFFICE AT KALAELOA BARBERS POINT HARBOR KALAELOA BARBERS POINT HARBOR, OAHU, HAWAII			
SHEET TITLE INTERIOR ELEVATIONS, ACCESSIBILITY NOTES, TYPICAL MOUNTING HEIGHTS			
DESIGNED BY: TH	JOB NUMBER: S10846		SHEET: A-3
DRAWN BY: ET			
CHECKED BY: SU			
DATE: JAN. 2023			
EXPIRATION DATE OF LICENSE: APRIL 30, 2024			
SCALE: AS NOTED			5 of 16 SHEETS