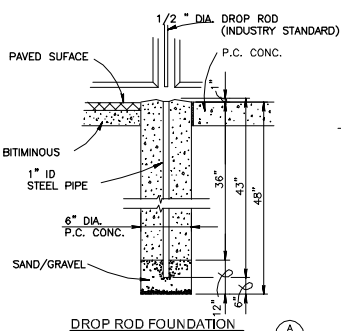


PERSONNEL GATE
NO SCALE

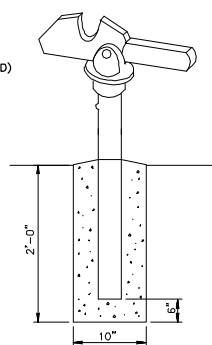
GATE POST SCHEDULE	
GATE LEAF WIDTH (NOMINAL)	OUTSIDE DIMENSION (NOMINAL)
6' OR LESS	2.875" OD 2.5" SQ
GREATER THAN 6' TO 12'	4.0" OD
GREATER THAN 12' TO 18'	6.625" OD
MORE THAN 18'	8.625" OD

NOTES:

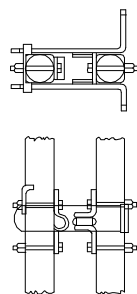
- FOR NON-SENSORED FENCES, DETAILS SHOWN ARE TO CLARIFY REQUIREMENTS AND ARE NOT INTENDED TO LIMIT OTHER TYPE OF FENCE SECTIONS AND METHODS OF INSTALLATION WHICH COMPLY WITH THE SPECIFICATIONS.
- SWING GATES SHALL BE CONSTRUCTED WITH DROP RODS, PADLOCKS, LATCH ASSEMBLY AND GATE KEEPERS EXCEPT AS NOTED.
- ALL GATE FRAMES SHALL MEET THE MINIMUM REQUIREMENTS OF ASTM F900 1.90" NOMINAL (ROUND) OR 2.00" NOMINAL (SQUARE). GATE FRAMES SHALL BE OF WELDED CONSTRUCTION OR SHALL BE ASSEMBLED USING HEAVY FITTINGS. AT CONTRACTOR'S OPTION A WELDED HORIZONTAL BRACE MAY BE USED IN LIEU OF TRUSS RODS TO BRACE ALL-WELDED GATE FRAMES. THE CONTRACTOR SHALL BE RESPONSIBLE FOR THE PROPER RIGID CONSTRUCTION OF ALL GATES SUPPLIED.



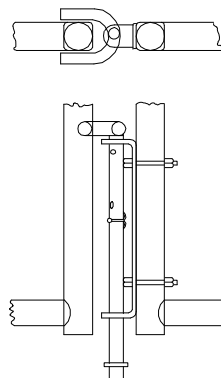
DROP ROD FOUNDATION



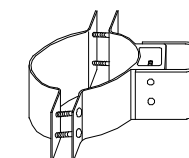
GATE KEEPER
(TO HOLD GATE OPEN)



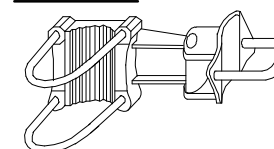
LATCH ASSEMBLY
NO SCALE



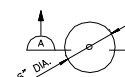
DROP ROD ASSEMBLY



STANDARD HINGE



OFFSET HINGE



CHAIN LINK FENCE REPAIR AND REPLACEMENT AT VARIOUS OAHU DISTRICT AIRPORTS

TYPICAL
DOUBLE SWING GATE
AND PERSONNEL GATE
DETAILS

DESIGN: OME 10/03/2019
DRAWN BY:
APPROVED:
PROJECT NO.:

DRAWING NO:
**EXHIBIT
B**
SHEET 1 OF 1