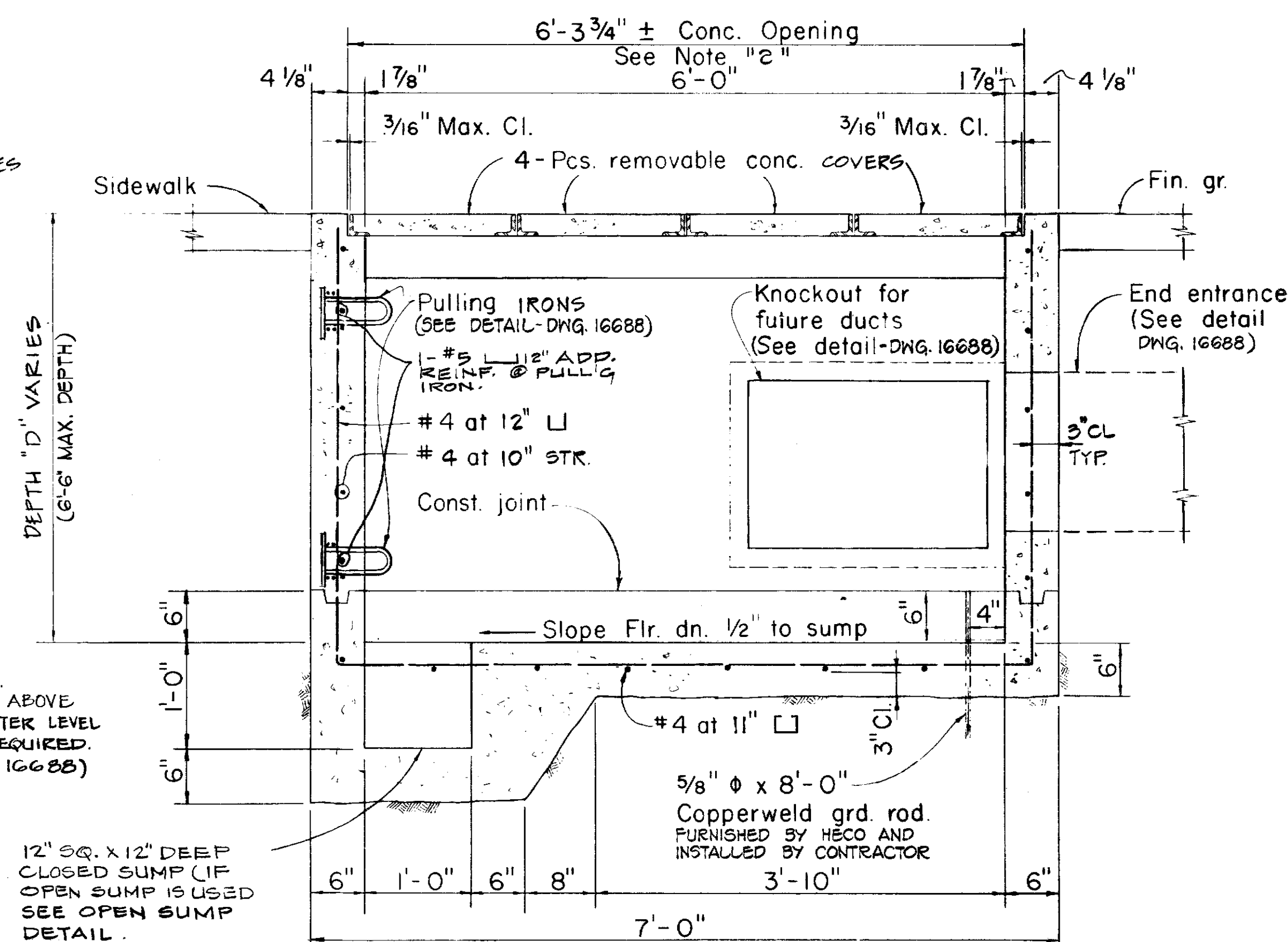
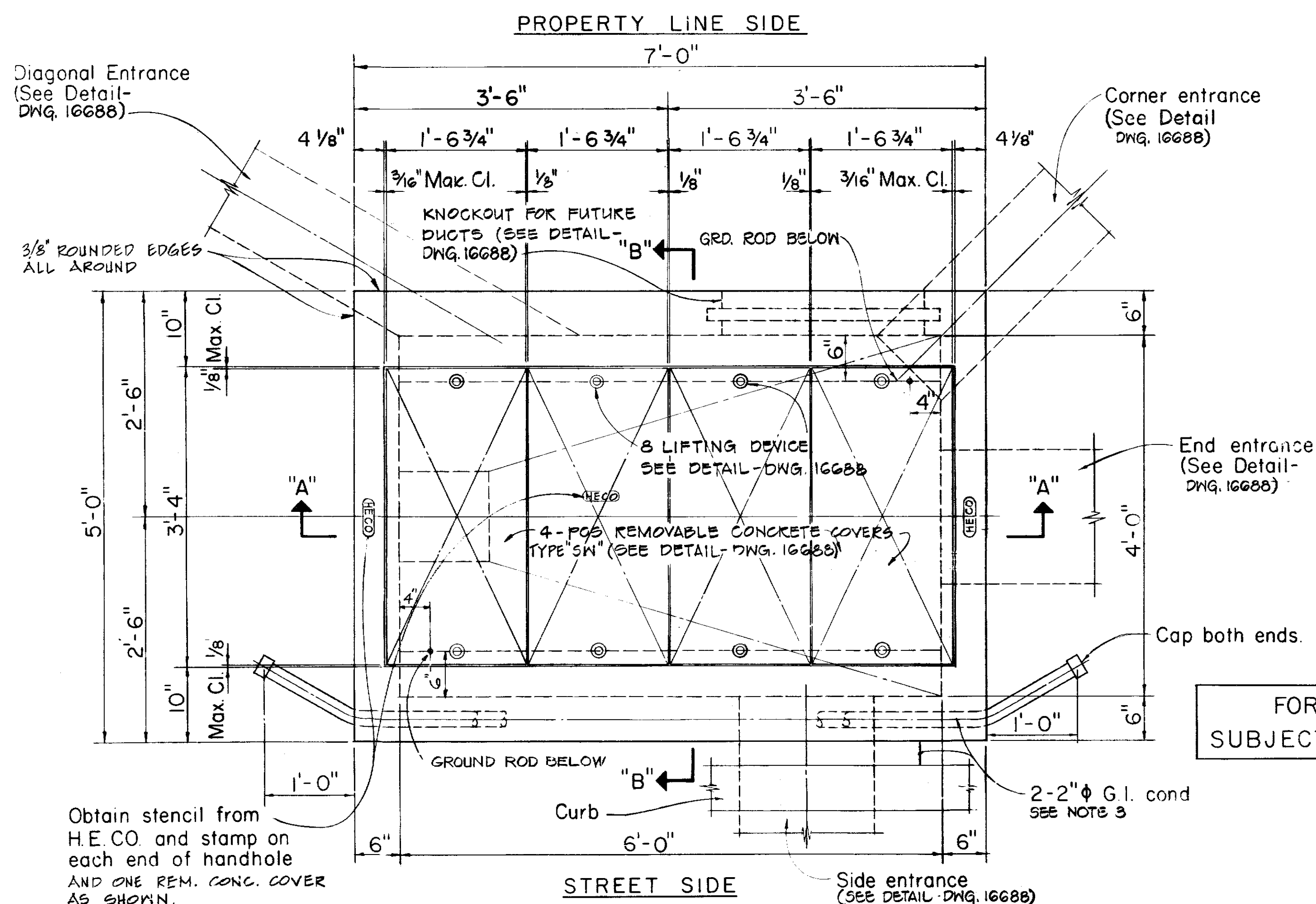


SECTION "B-B"
Scale: 1"=1'-0"



SECTION "A-A"
Scale: 1"=1'-0"



TOP PLAN
Scale: 1"=1'-0"

REINFORCED CONCRETE QUANTITIES

QUANTITIES OF MATERIALS FOR DEPTH "D" = 5'-0",

Total concrete = 3.0 Cu. Yds.
Total reinf. steel = 427 Lbs.
Total misc. steel = 160 Lbs.

WEIGHT PER REMOVABLE CONCRETE COVER

Concrete = 150 Lbs.
Reinf. steel = 7 Lbs.
Misc. steel = 42 Lbs.

TOTAL 199 Lbs.

MATERIALS FOR 6" DEPTH OF 6" THICK WALL,

Concrete = 0.2 Cu. Yds.
Reinf. steel = 25 Lbs.

NOTES:

- FOR GENERAL NOTES AND MISCELLANEOUS DETAILS, REFER TO DWG. 16688 (2 SHEETS).
- MAXIMUM CLEARANCES BETWEEN REMOVABLE CONCRETE COVERS AND CONCRETE OPENING AT THE SUPPORTS MUST BE KEPT. CONCRETE CONTRACTOR SHALL MEASURE COVER SLAB STEEL FRAME AFTER FABRICATION TO OBTAIN PROPER CLEARANCES. ANY VARIATION IN CLEARANCES SHALL BE CORRECTED TO THE SATISFACTION OF THE ENGINEER AT CONTRACTOR'S EXPENSE.
- 2 - 2" ϕ G.I. COND. FOR STREET LIGHTING TO BE INSTALLED ONLY WHEN OUTSIDE FACE OF HANDHOLE IS LESS THAN 3" FROM CURBING.
- TOP OF HANDHOLE SHALL MATCH NEW AND/OR EXISTING GRADES UNLESS OTHERWISE SHOWN OR NOTED ON PLANS OF PROJECT CONCERNED.
- FOR DUCT ENTRANCES, DEPTH AND LOCATIONS OF PULLING IRONS, SEE HANDHOLE DEVELOPMENTS OF PROJECT CONCERNED.
- SEE PROJECT DRAWING FOR LOCATION OF HANDHOLE CONCERNED.

FOR USE IN AREAS NOT
SUBJECT TO VEHICULAR TRAFFIC

2	5-9-85	ADDED SECOND GROUND ROD	MM	RE	APP'D
1	9-14-81	ADDED ADDITIONAL REINF. @ PULLING IRONS.	RE	APP'D	
0	6-15-77	REDRAWN	RE	APP'D	
NO.	DATE	REVISIONS	BY	CHK'D	APP'D
HANDHOLE TYPE 46 (4'-0" X 6'-0")					
UNDERGROUND STANDARDS					
DESIGNED	Gokuda	DRAWN	ESP	DATE: 6-15-77	SCALE: AS NOTED
CHECKED	ELEC. MECH. TRUC				
APPROVAL	ENGINEERING DESIGN DEPARTMENT HAWAIIAN ELECTRIC CO., INC. HONOLULU, HAWAII				
	DRAWING NUMBER				REV.
	18342				