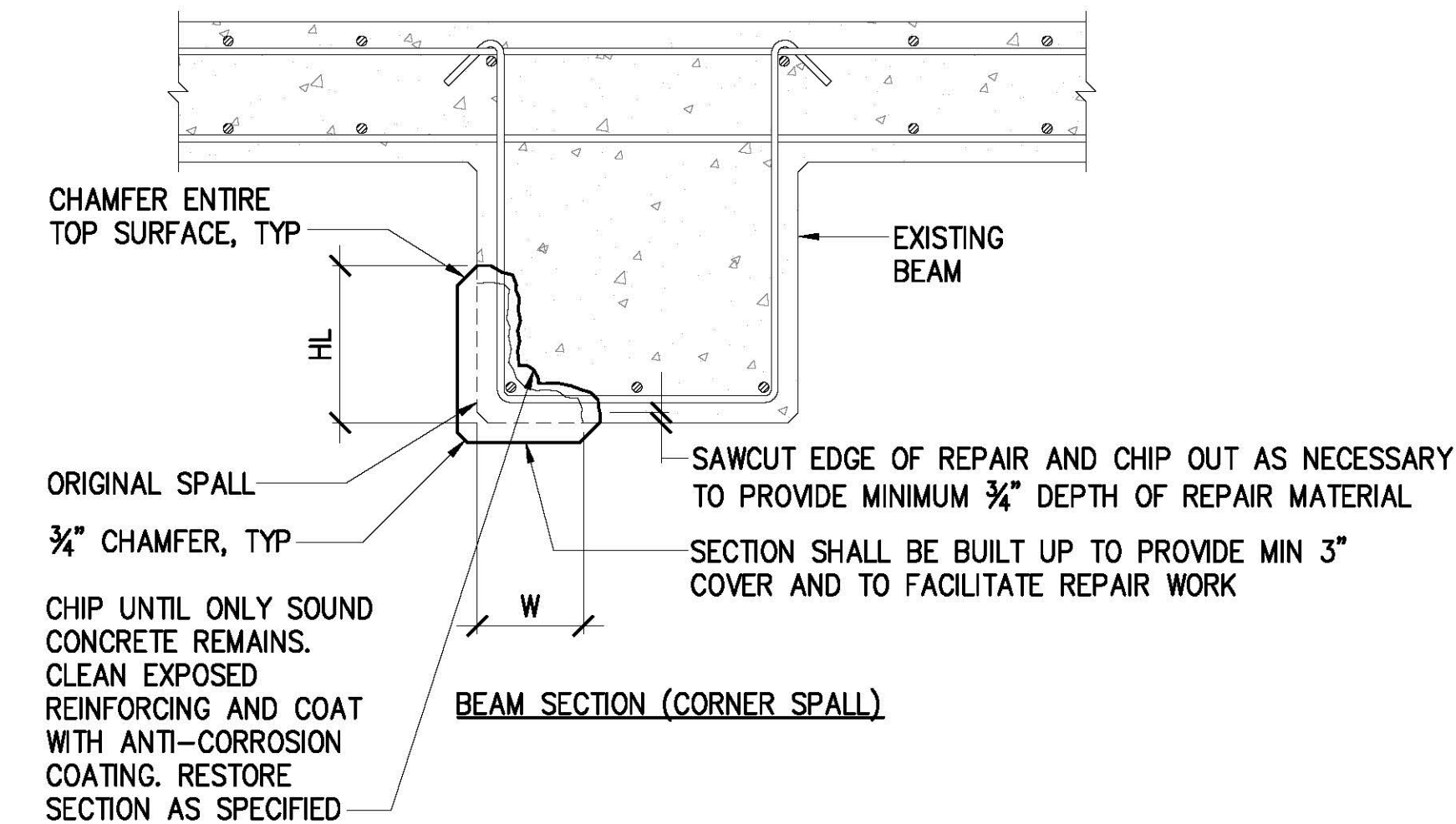
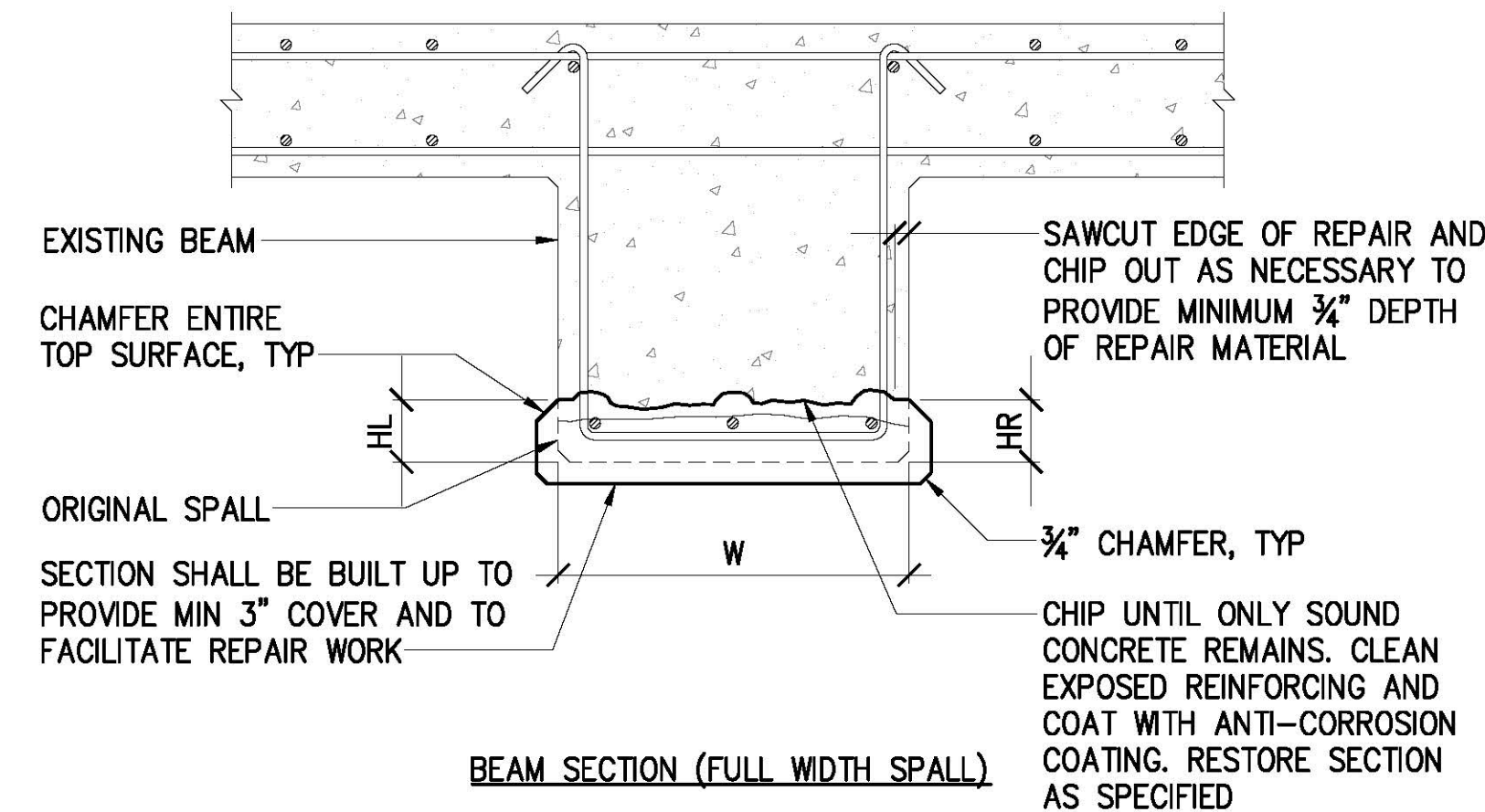
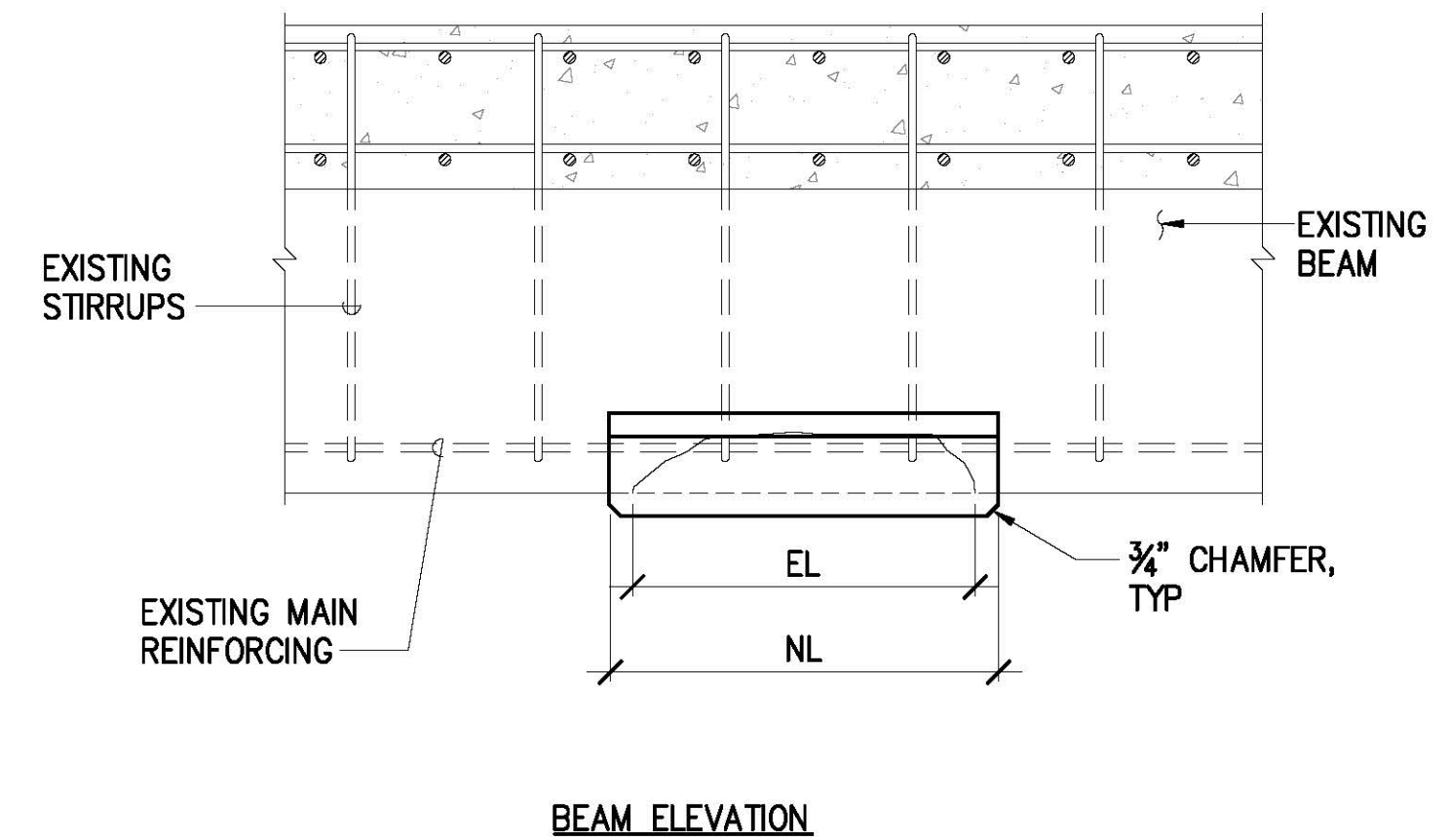


PAY AREA:
 HL = HEIGHT OF REPAIR (LEFT SIDE)
 HR = HEIGHT OF REPAIR (RIGHT SIDE)
 W = ORIGINAL WIDTH OF BEAM/GIRDER
 EL = EXISTING LENGTH OF SPALL
 NL = LENGTH OF REPAIR

$$\text{PAY AREA} = (\text{HL} + \text{HR} + \text{W})\text{NL}$$

NOTES:

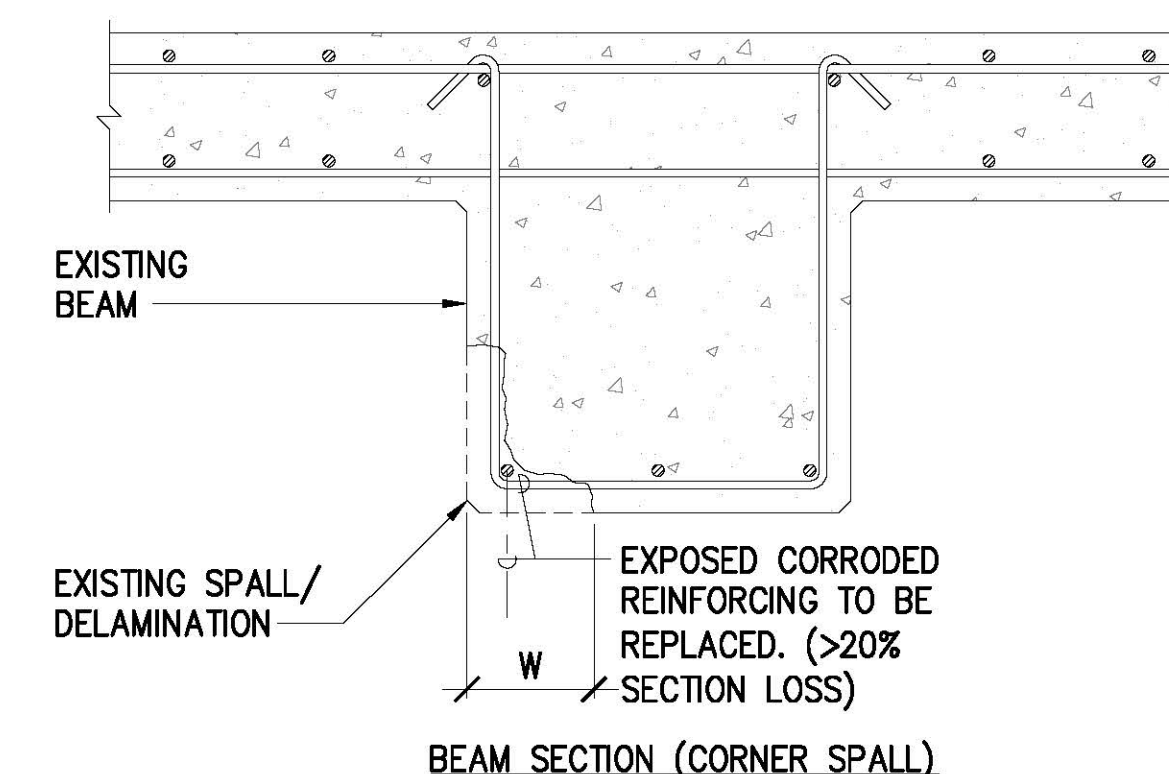
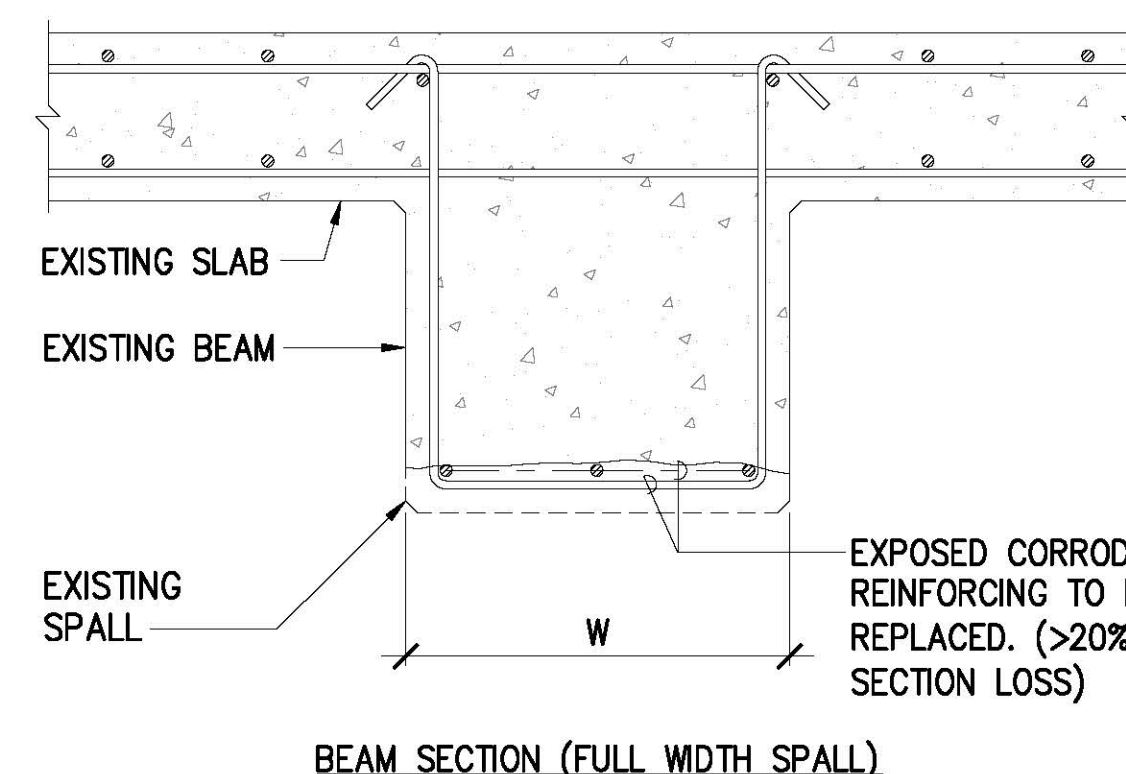
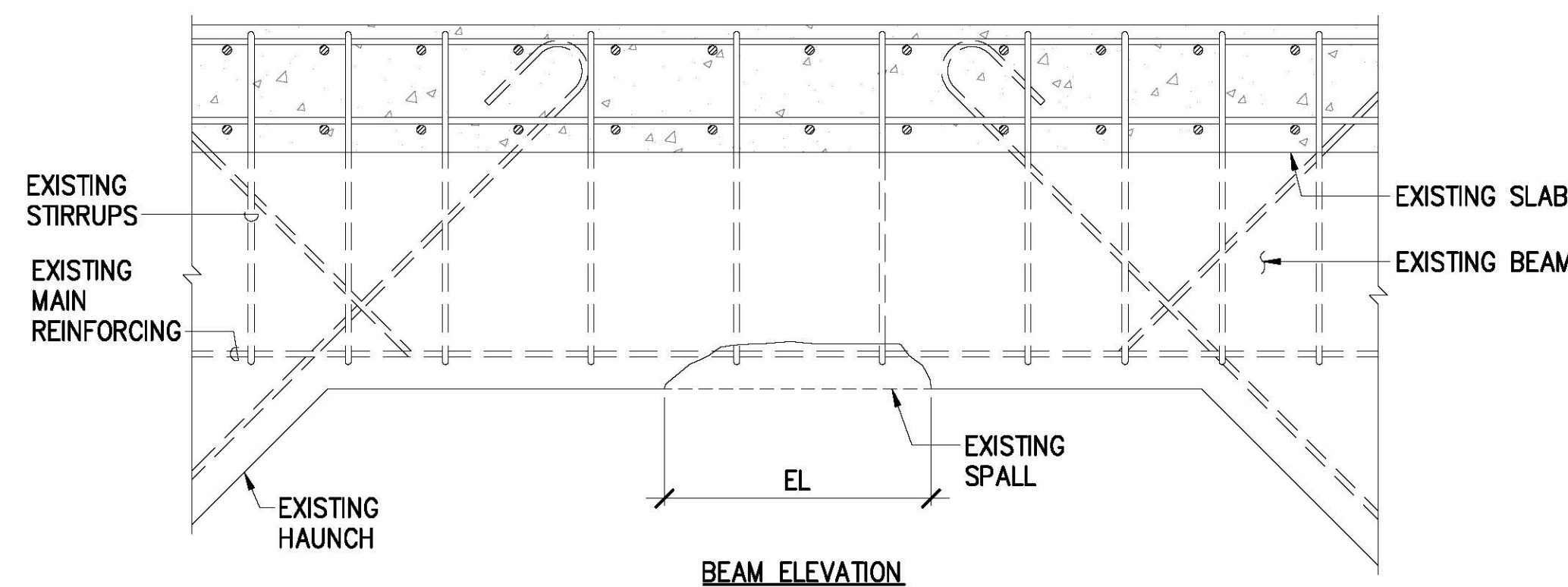
1. PAY AREA SHALL BE THE TOTAL REPAIRED AREA ON ALL BEAM FACES. IF HL, HR OR W VARY ALONG THE LENGTH OF REPAIR, PAY AREA SHALL BE CALCULATED INDIVIDUALLY FOR EACH BEAM FACE.



EXISTING CONDITION

REPAIRED CONDITION

1 BEAM SPALL REPAIR (TYPE B)
 S-6 NOT TO SCALE

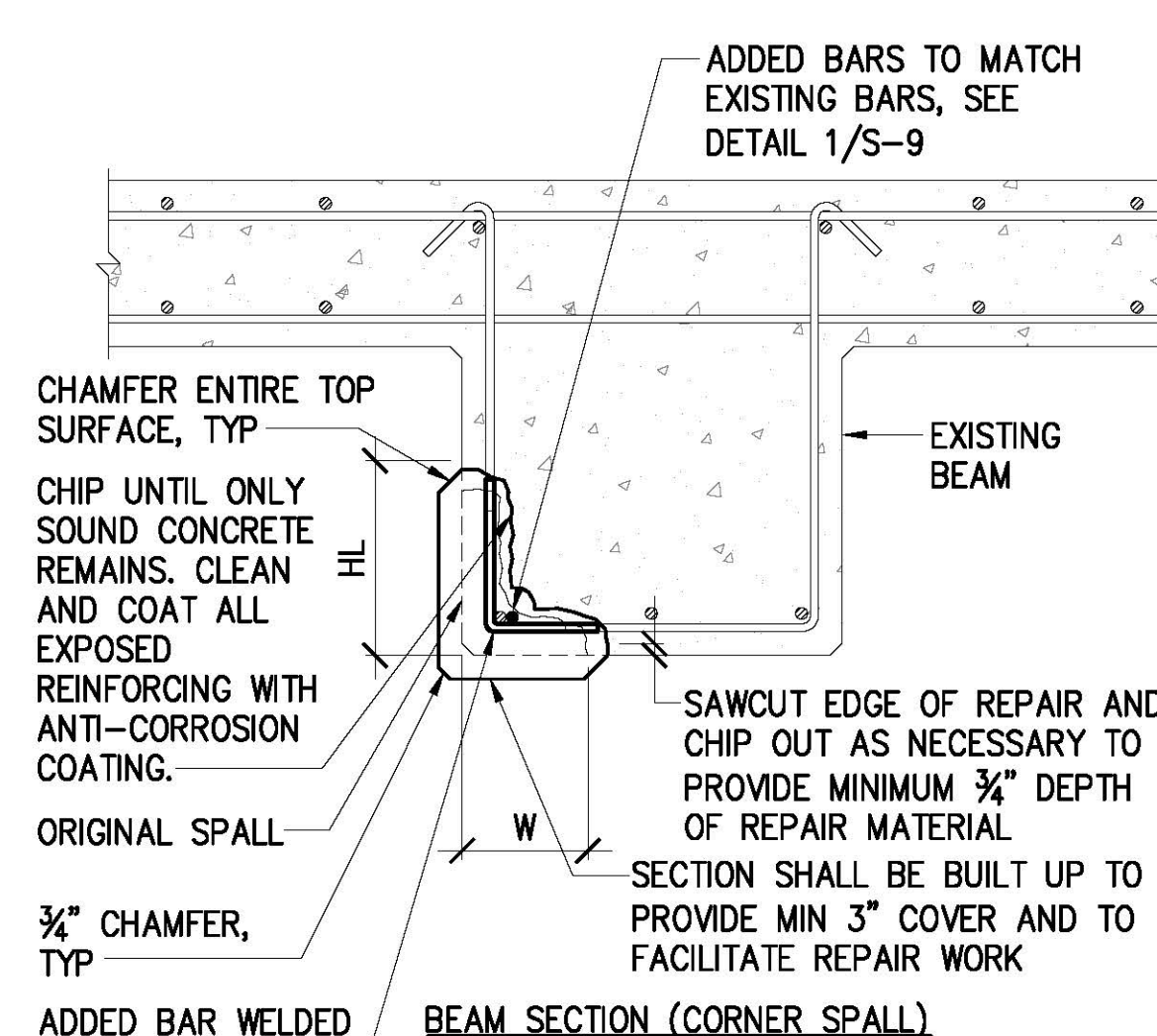
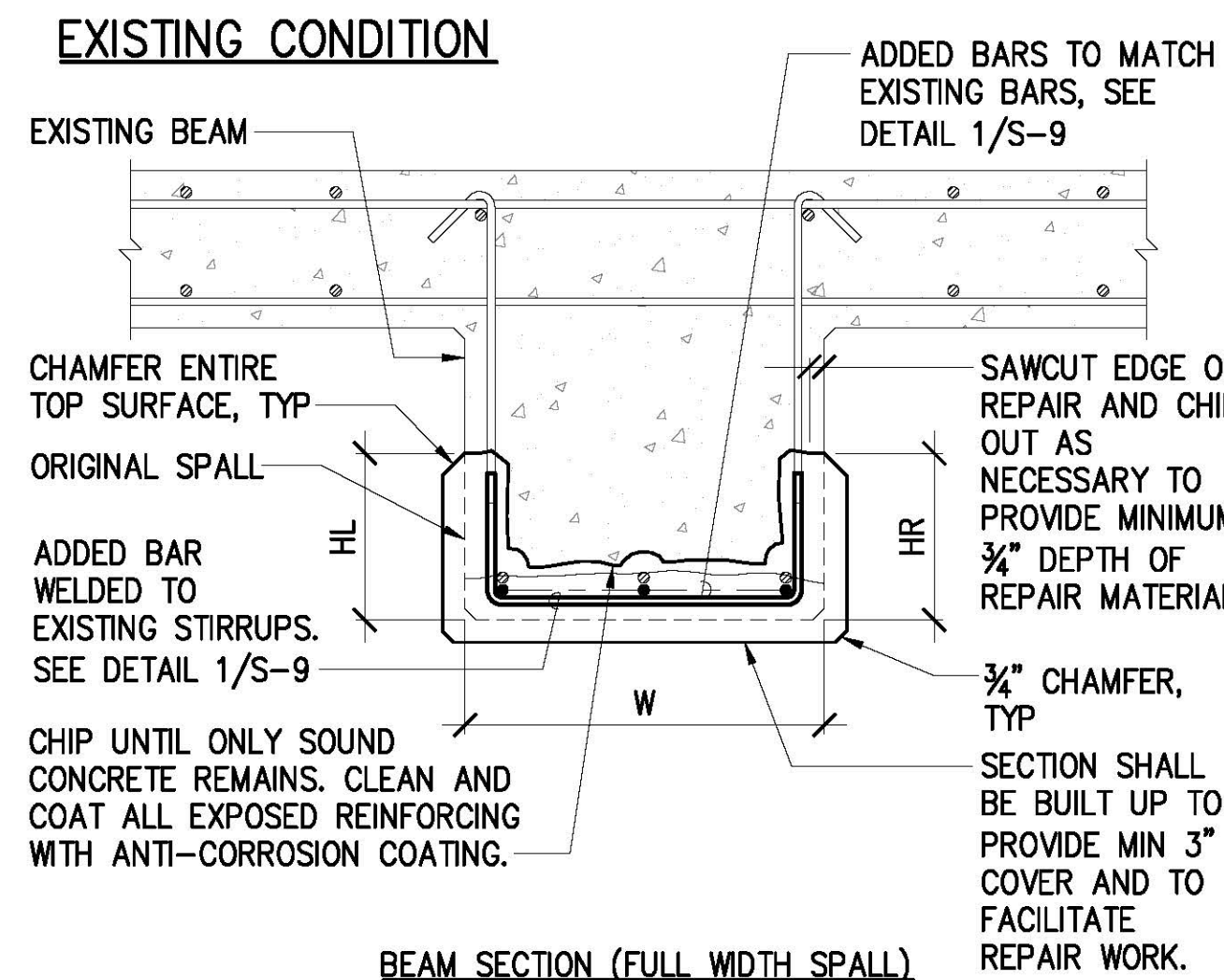
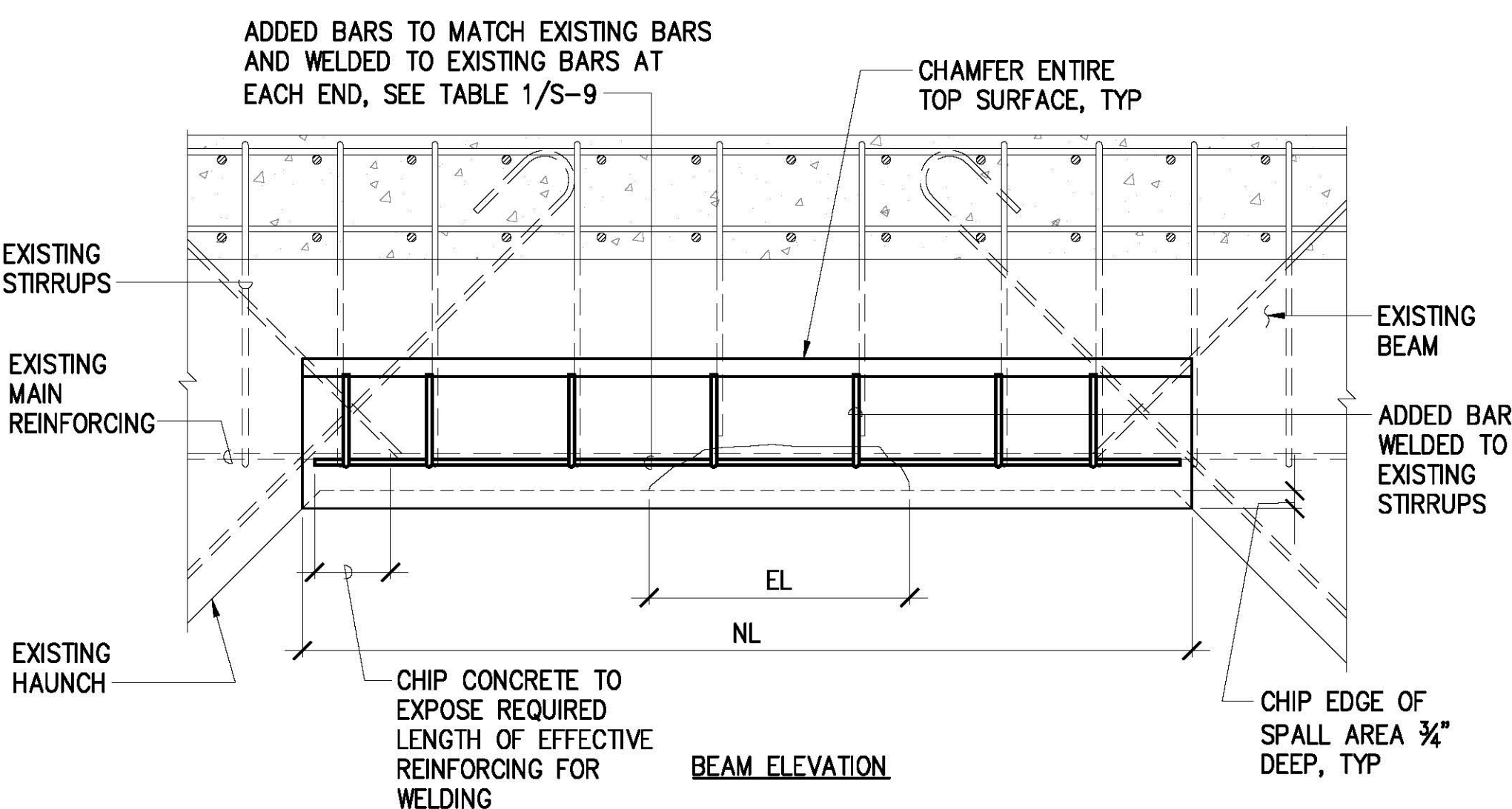


PAY AREA:
 HL = HEIGHT OF REPAIR (LEFT SIDE)
 HR = HEIGHT OF REPAIR (RIGHT SIDE)
 W = ORIGINAL WIDTH OF BEAM/GIRDER SPALL
 EL = EXISTING LENGTH OF SPALL
 NL = LENGTH OF REPAIR

$$\text{PAY AREA} = (\text{HL} + \text{HR} + \text{W})\text{NL}$$

NOTES:

1. PAY AREA SHALL BE THE TOTAL REPAIRED AREA ON ALL BEAM FACES. IF HL, HR OR W VARY ALONG THE LENGTH OF REPAIR, PAY AREA SHALL BE CALCULATED INDIVIDUALLY FOR EACH BEAM FACE.



EXISTING CONDITION

REPAIRED CONDITION

2 BEAM SPALL REPAIR WITH REINFORCING STEEL REPLACEMENT (TYPE BR)
 S-6 NOT TO SCALE

		REVISION DATE DESCRIPTION BY APPROVED	
STATE OF HAWAII DEPARTMENT OF TRANSPORTATION HARBORS DIVISION			
JOB TITLE SUBSTRUCTURE AND FENDER REPAIRS AT PIERS 13-14 HONOLULU HARBOR, OAHU, HAWAII			
SHEET TITLE BEAM SPALL REPAIR DETAILS			
DESIGNED BY: GO DRAWN BY: DL CHECKED BY: BK DATE: 04/2023 SCALE: AS SHOWN	JOB NUMBER H.C. 10826	SHEET S-6 8 of 12 SHTS.	