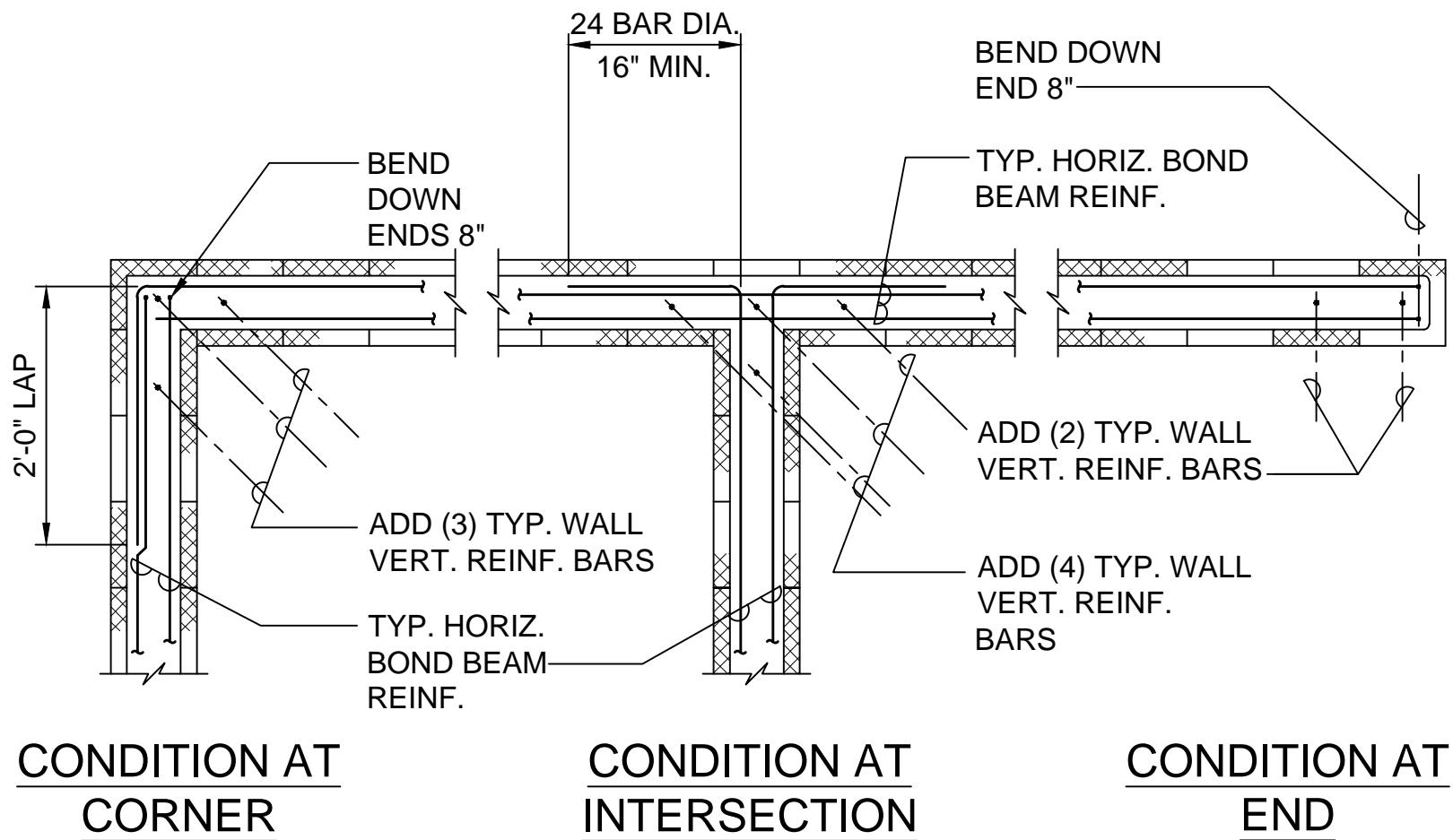


TYPICAL CMU WALL REINFORCING SCHEDULE		
WALL "t"	VERT. BARS	HORIZ. BARS
8"	#5 AT 16"	#5 AT 24"

NOTE:  
ALL HORIZONTAL SHEAR REINFORCEMENT SHALL BE ANCHORED AROUND VERTICAL REINFORCING BARS WITH STANDARD HOOK, PER ACI 530-13, SECTION 6.1.5

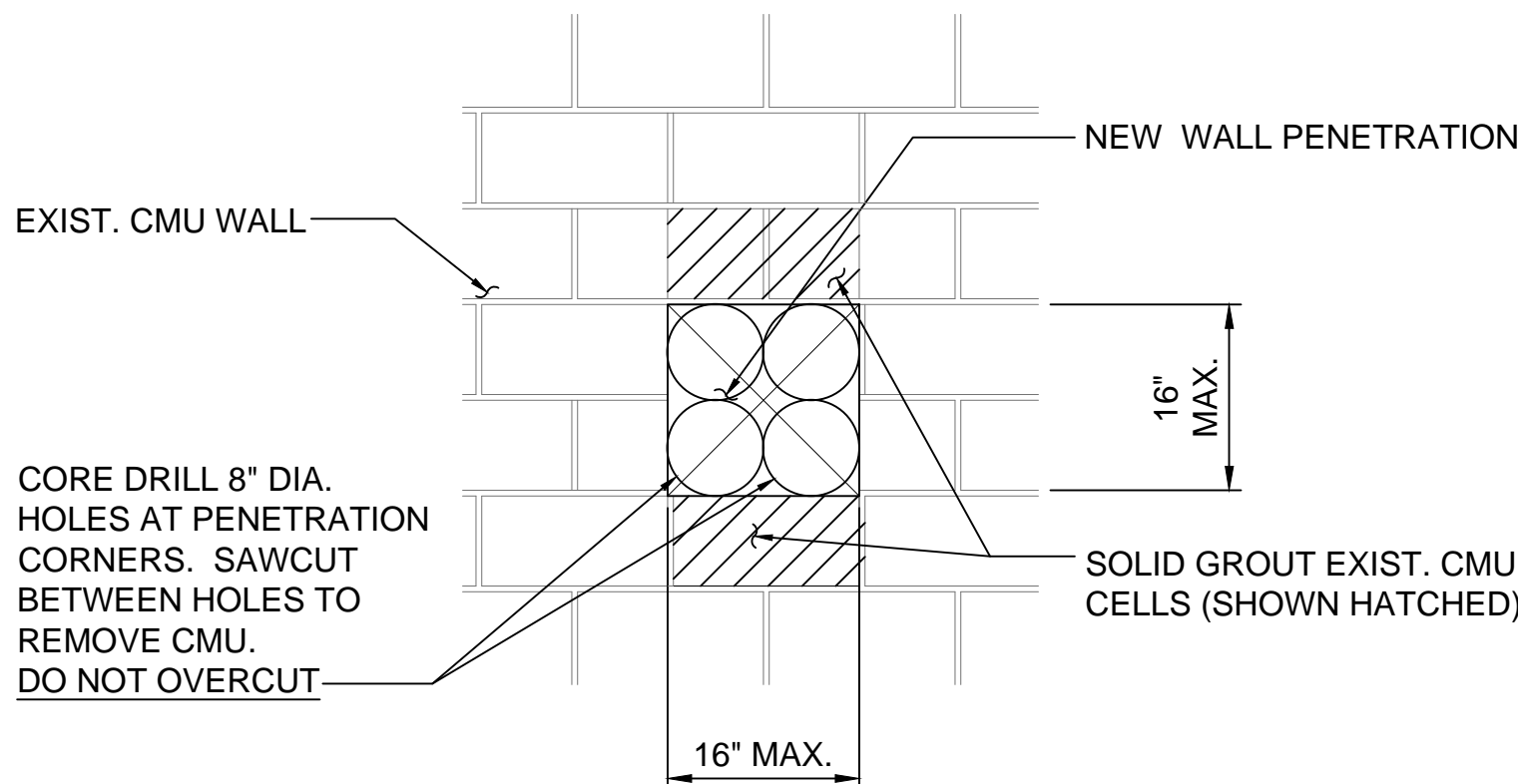


### TYPICAL CMU WALL REINFORCEMENT NOTES

- MINIMUM WALL REINFORCEMENT SHOWN IN SCHEDULE SHALL GOVERN FOR ALL WALLS WHERE REINFORCEMENT IS NOT SHOWN ON PLANS, SECTIONS, ELEVATIONS, ETC.
- WHERE WALL IS DISCONTINUOUS, EXTEND ALL WALL REINFORCING TO WITHIN 2 INCHES OF TOP OR END OF WALL OR SLAB AND PROVIDE STANDARD 90 DEGREE HOOK.
- STAGGER SPLICES IN HORIZONTAL WALL REINFORCEMENT.
- OPENINGS IN NEW CMU WALL ARE TO BE SUBMITTED FOR REVIEW AND APPROVAL. OPENINGS IN EXISTING CMU WALLS SHALL BE PER DETAIL 2/S-004. SEE MECHANICAL DRAWINGS FOR SIZE AND LOCATION OF MECHANICAL DUCT AND FOR INSULATION REQUIREMENTS AND DETAILS.
- PROVIDE DOWELS TO MATCH ALL WALL REINFORCING FROM ABUTTING MEMBERS. DOWELS SHALL LAP A MINIMUM 40 BAR DIAMETERS WITH WALL REINFORCEMENT AND SHALL BE EMBEDDED IN ABUTTING MEMBER A MINIMUM OF 40 BAR DIAMETERS UNLESS OTHERWISE SHOWN. WHERE THERE IS INSUFFICIENT DEPTH TO OBTAIN PROPER EMBEDMENT, EXTEND DOWEL TO THE FAR FACE OF MEMBER AND HOOK UNLESS OTHERWISE DIRECTED BY THE ENGINEER.

## 1 TYPICAL CMU WALL DETAILS

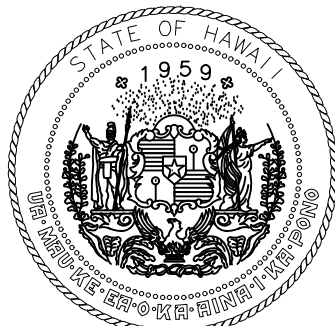
SCALE: NOT TO SCALE



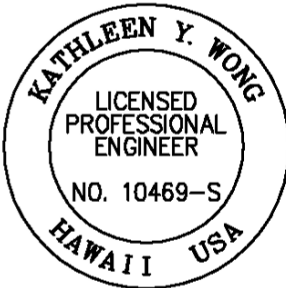
- NOTES:
- FOR PENETRATIONS THAT ARE 8" IN DIAMETER OR SMALLER, PENETRATION MAY BE MADE WITH A SINGLE CORING IN THE CMU WALL.
  - CONTRACTOR SHALL SCAN WALL FOR REBAR AND AVOID REINFORCING STEEL.
  - PENETRATIONS ARE NOT PERMITTED WITHIN 24" FROM THE EDGE OF WINDOW JAMBS, OR AT CORNERS OR ENDS OF CMU WALLS. THE EDGE OF A WINDOW JAMB PROJECTS UP AND DOWN VERTICALLY TO THE TOP AND BOTTOM OF THE CMU WALL.

## 2 TYPICAL EXISTING CMU WALL PENETRATION DETAIL

SCALE: NOT TO SCALE



Airports Division  
DEPARTMENT OF TRANSPORTATION  
STATE OF HAWAII



*Kathleen Y. Wong*  
04/30/2024  
Licensed Expiration Date

This work was prepared by me or under my supervision.

DSGN.	DRWN.	CHKD.	APPD.
DH/AI	DH/AI	KW	

NO.	DATE	REVISIONS
-----	------	-----------

DATE

PROJECT TITLE :

NEW PASS AND ID OFFICE

AT  
DANIEL K. INOUE INTERNATIONAL AIRPORT  
HONOLULU, OAHU, HAWAII

PROJECT NO.:

CO1322-63

SHEET TITLE:

TYPICAL CMU  
WALL DETAILS

DATE :

12/21/22

SHEET :

30 OF 100 SHEETS

DWG. NO.

S004