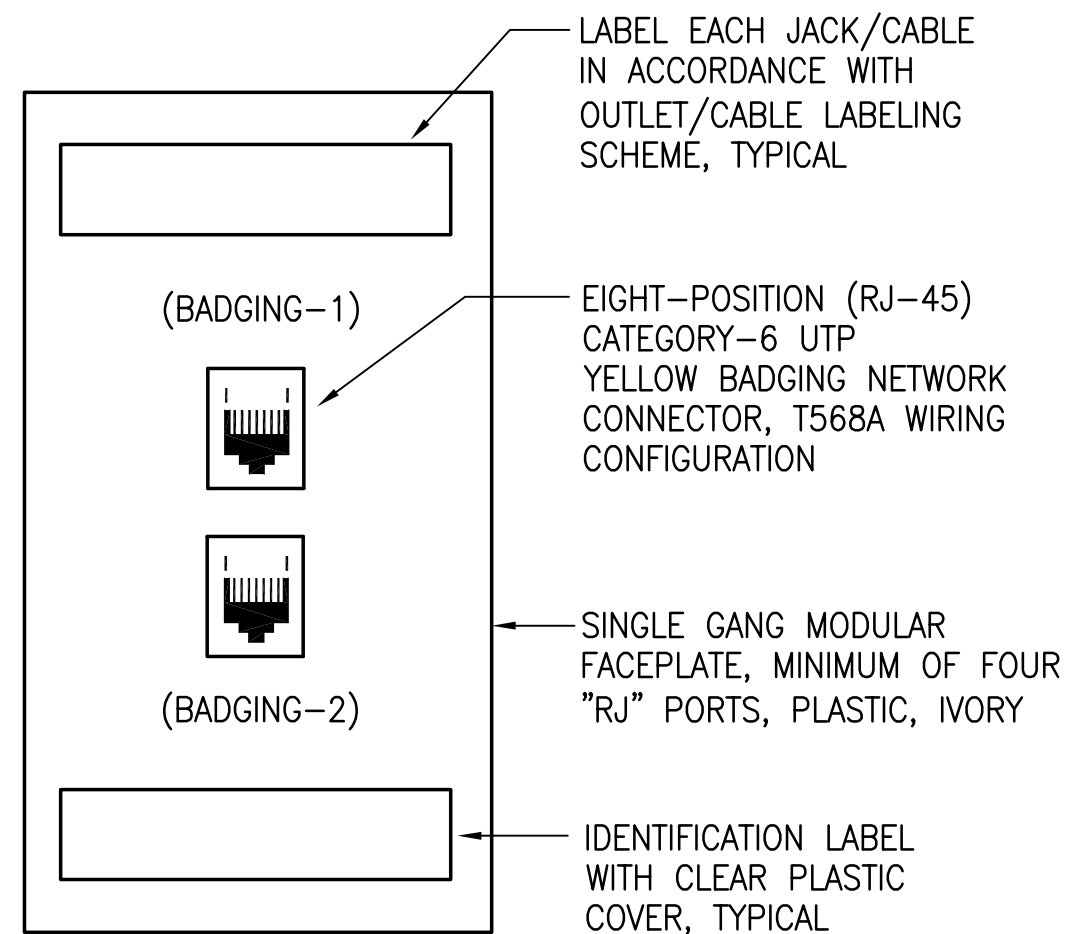


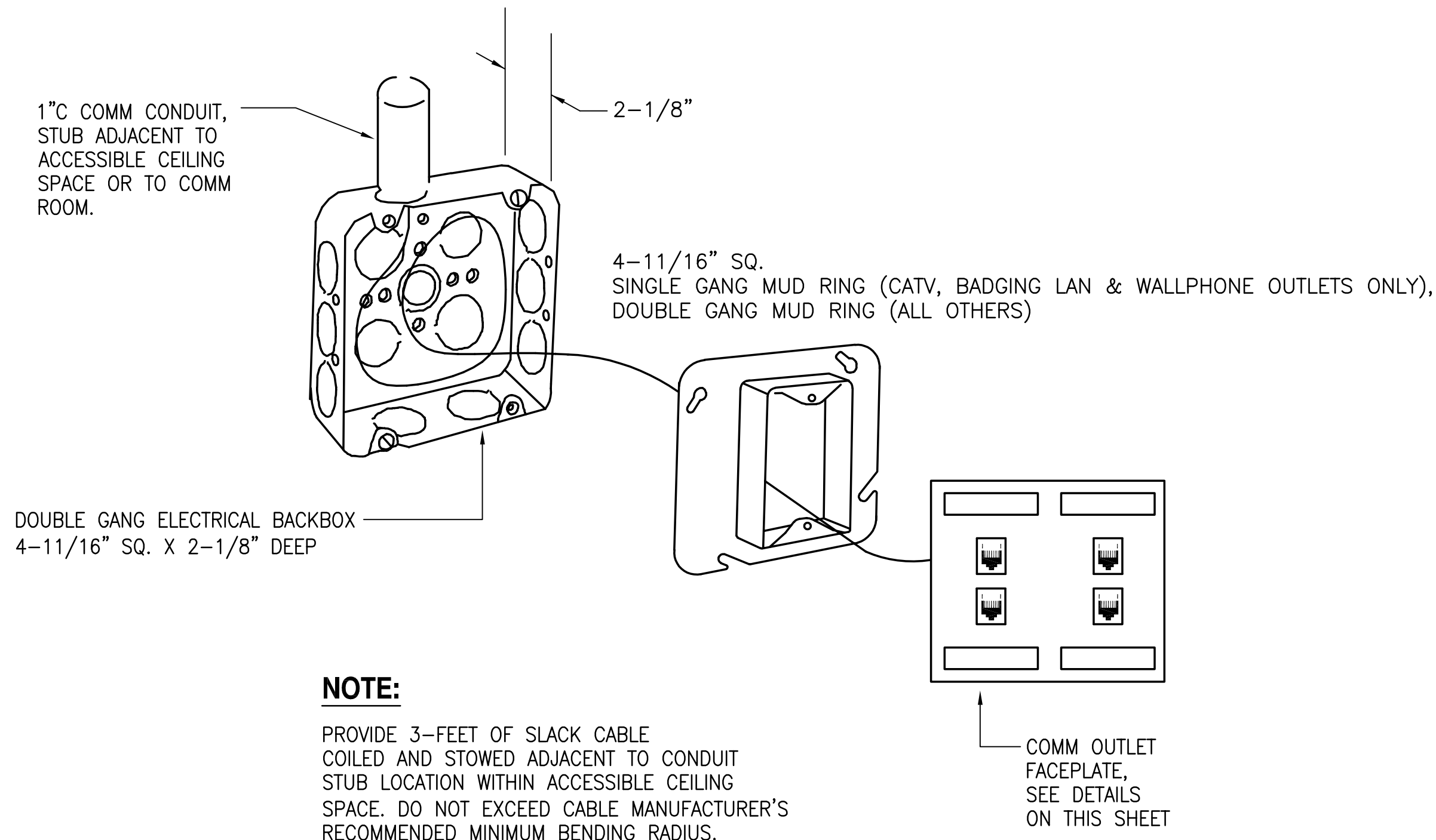
1 TYPICAL TEL WALLPHONE OUTLET DETAIL (1T)
TC501 NOT TO SCALE

2 TYPICAL COMBINATION STATE (DOT-A) TEL/DATA INFORMATION OUTLET DETAIL (2T/2D)
TC501 NOT TO SCALE (1T/2D SIMILAR WITH ONE LESS TEL CONNECTOR)

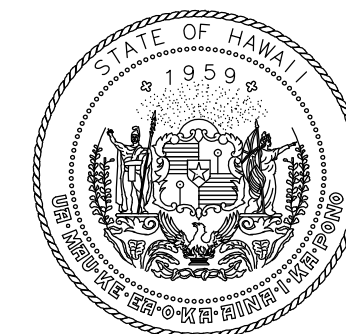
3 TYPICAL CATV OUTLET (1V/1D)
TC501 NOT TO SCALE



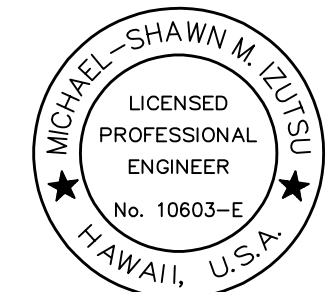
4 TYPICAL STATE (DOT-A) BADGING NETWORK INFORMATION OUTLET DETAIL (2B)
TC501 NOT TO SCALE



5 TYPICAL COMMUNICATIONS OUTLET BOX DETAIL
TC501 NOT TO SCALE



Airports Division
DEPARTMENT OF TRANSPORTATION
STATE OF HAWAII



Michael-Shawn M. Zutsen
04/30/24
Licensed Expiration Date

This work was prepared by me or under my supervision.

DSGN.	DRWN.	CHKD.	APPD.
MMI	FCC	MMI	MMI

NO.	DATE	REVISIONS
-----	------	-----------

DATE

PROJECT TITLE :

NEW PASS AND ID OFFICE

AT
DANIEL K. INOUE INTERNATIONAL AIRPORT
HONOLULU, OAHU, HAWAII

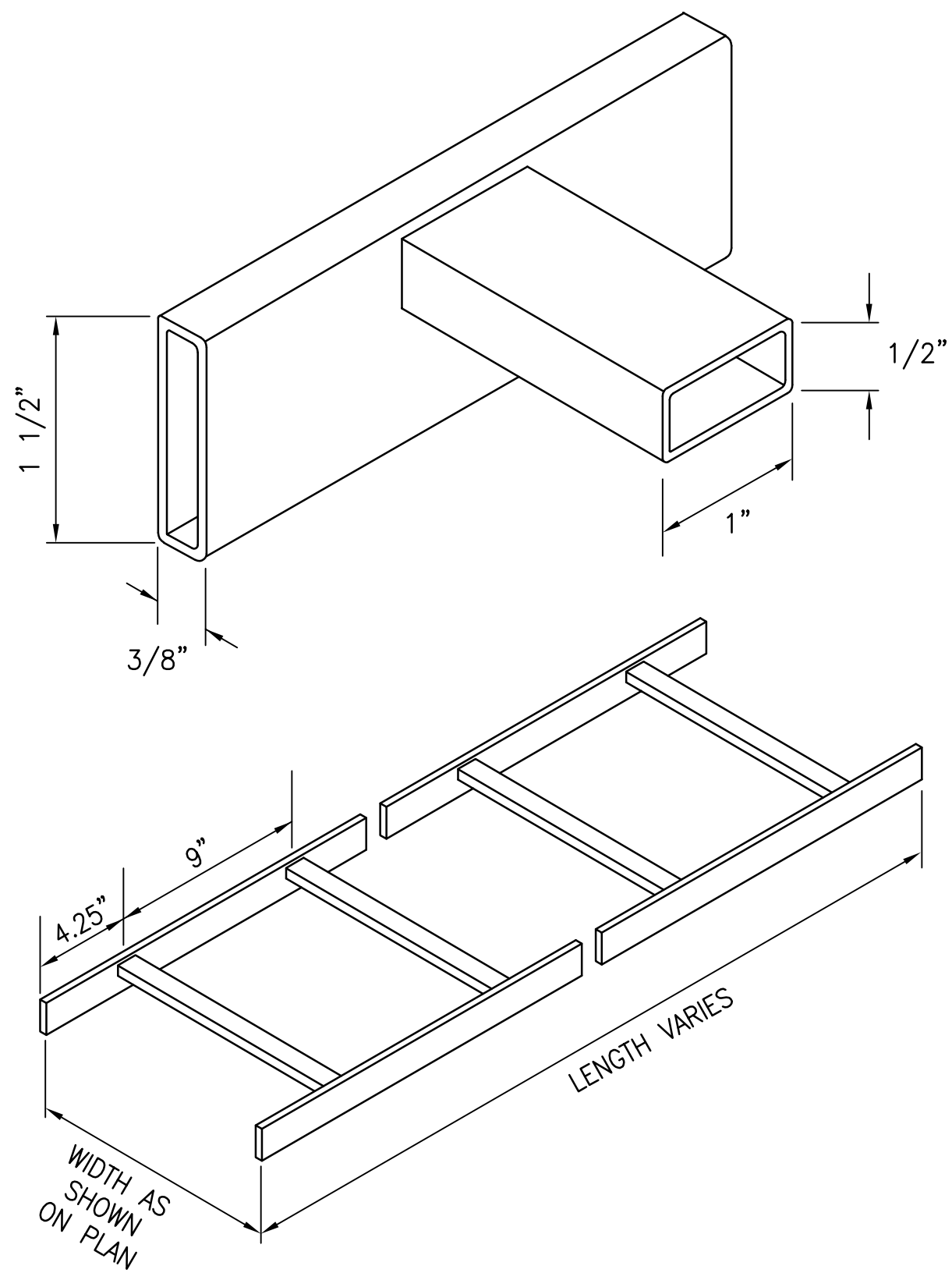
PROJECT NO.:

CO1322-63

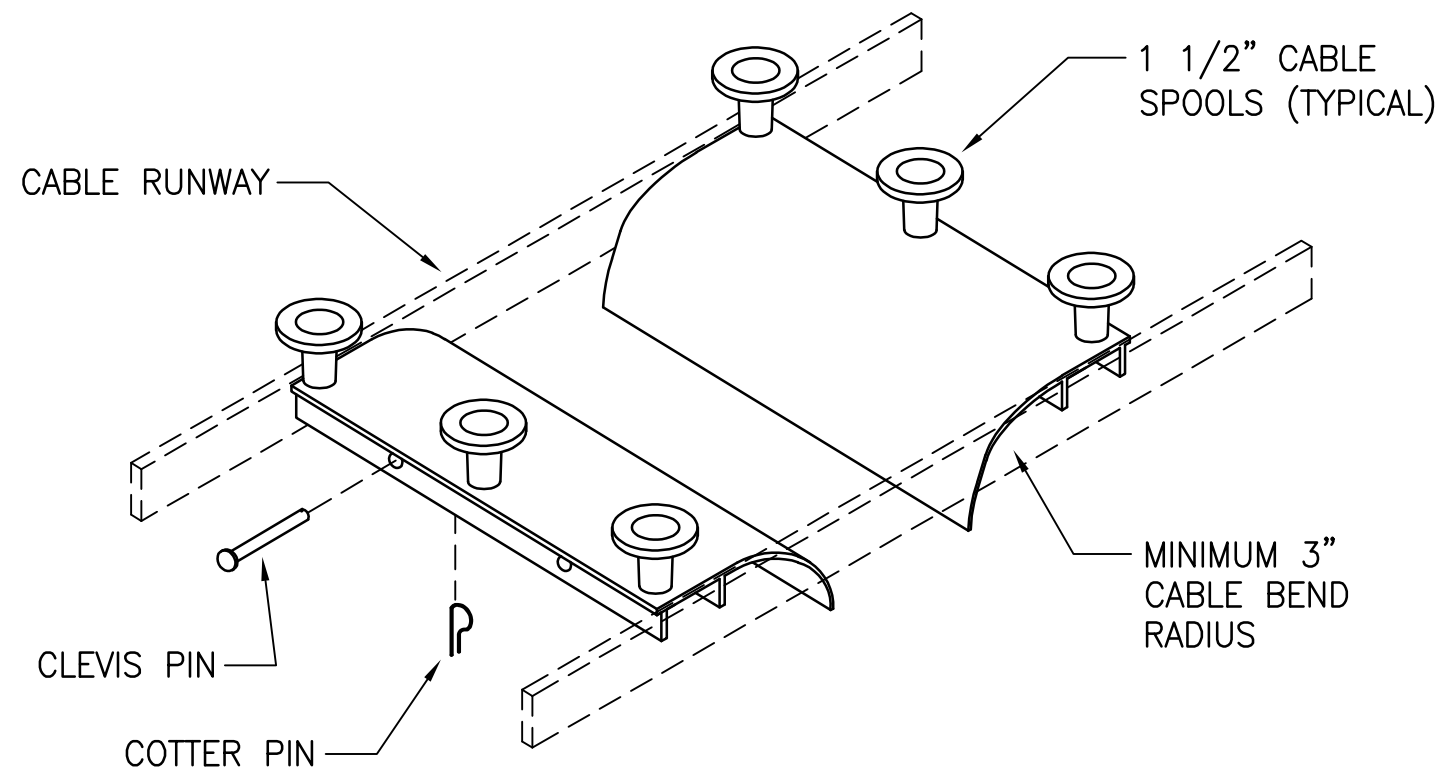
SHEET TITLE:

TELECOMMUNICATIONS
DETAILS

DATE :	DWG. NO.
12/21/22	TC501
SHEET :	
094 OF 100	

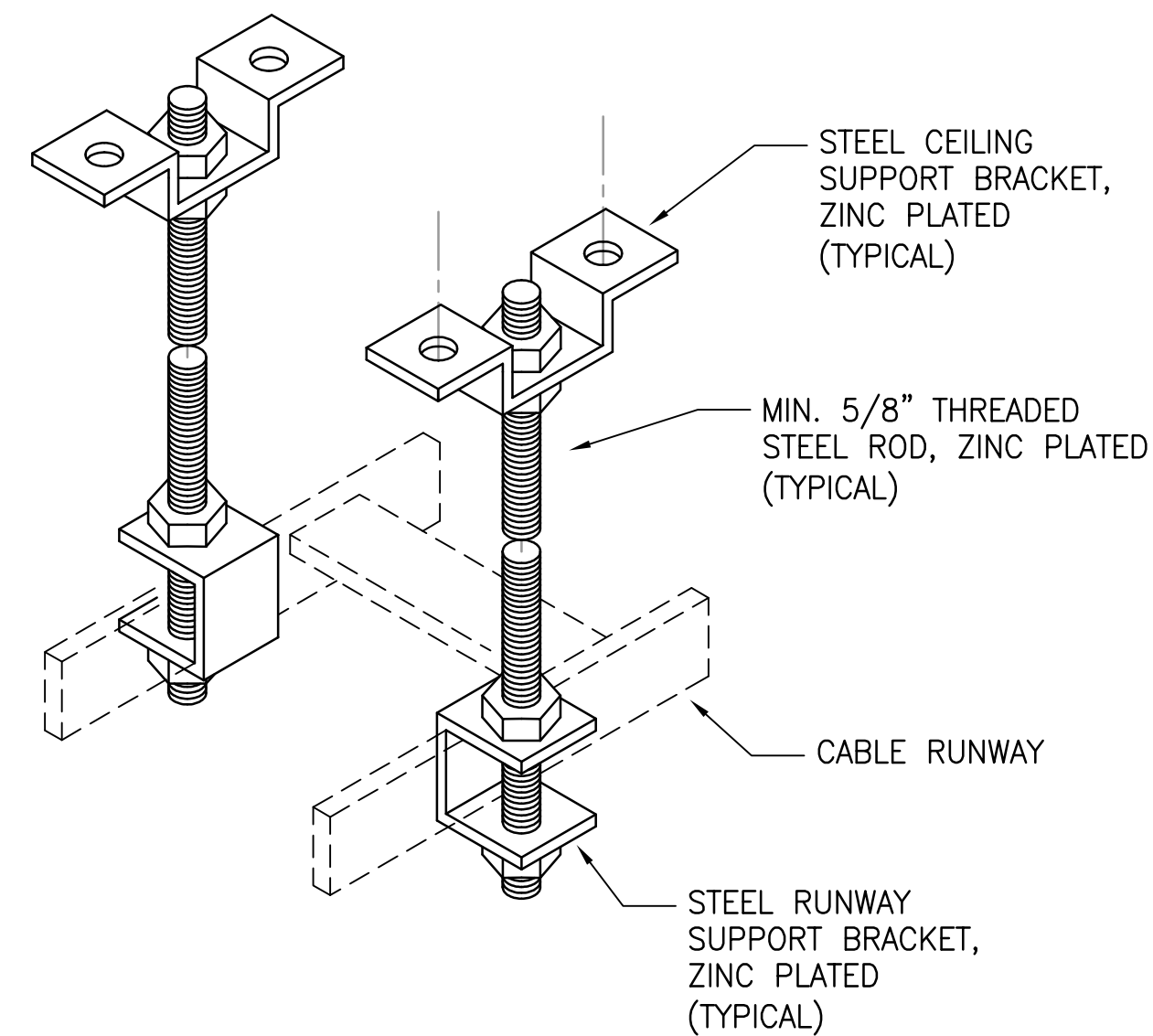


1 TYPICAL CABLE RUNWAY DETAIL
TC502 NOT TO SCALE

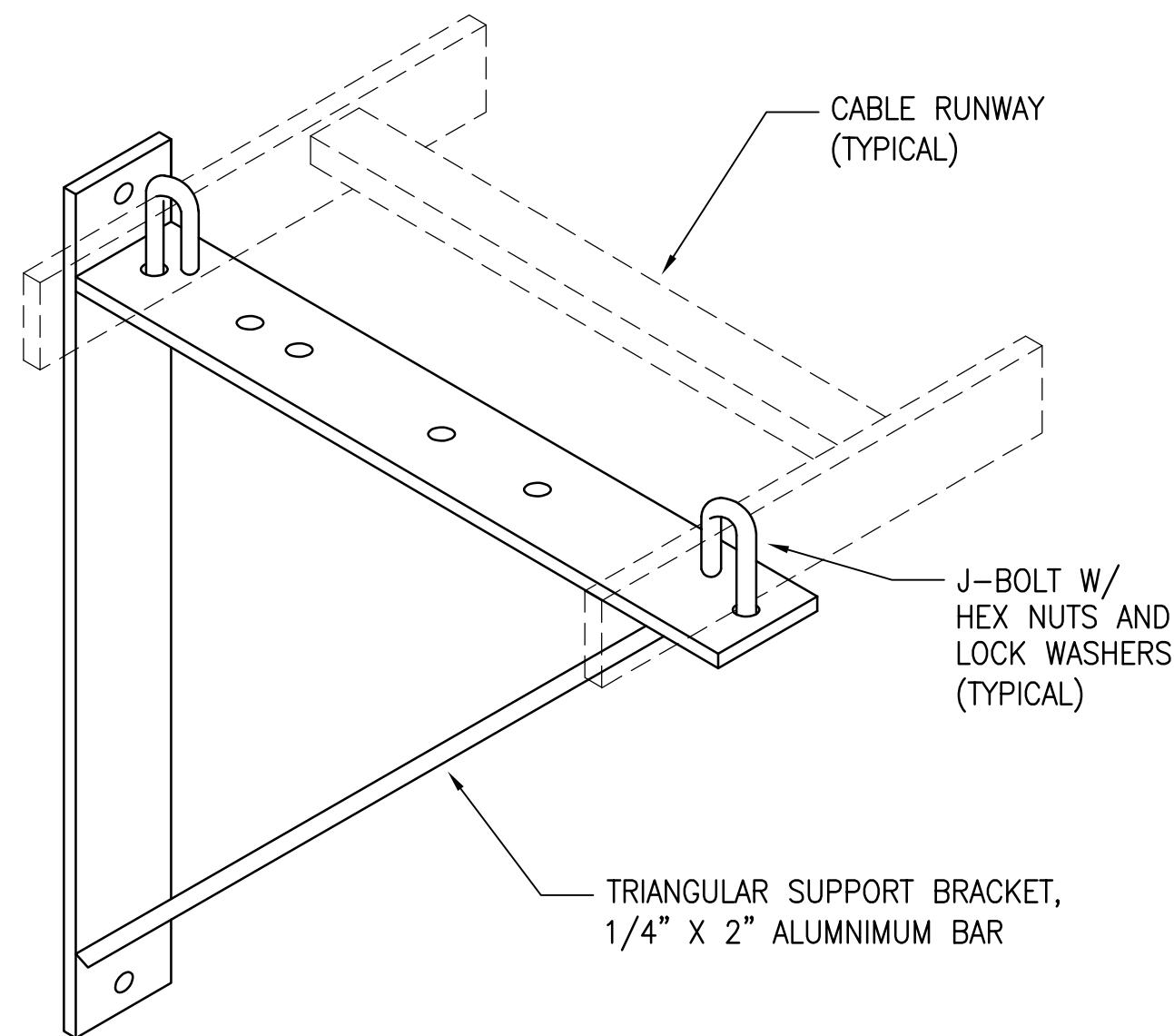


NOTE:
PROVIDE MINIMUM OF ONE (1) CABLE RUNWAY DROPOUT PER EQUIPMENT CABINET POSITION. REFER TO FLOORPLANS FOR EQUIPMENT CABINET POSITIONS.

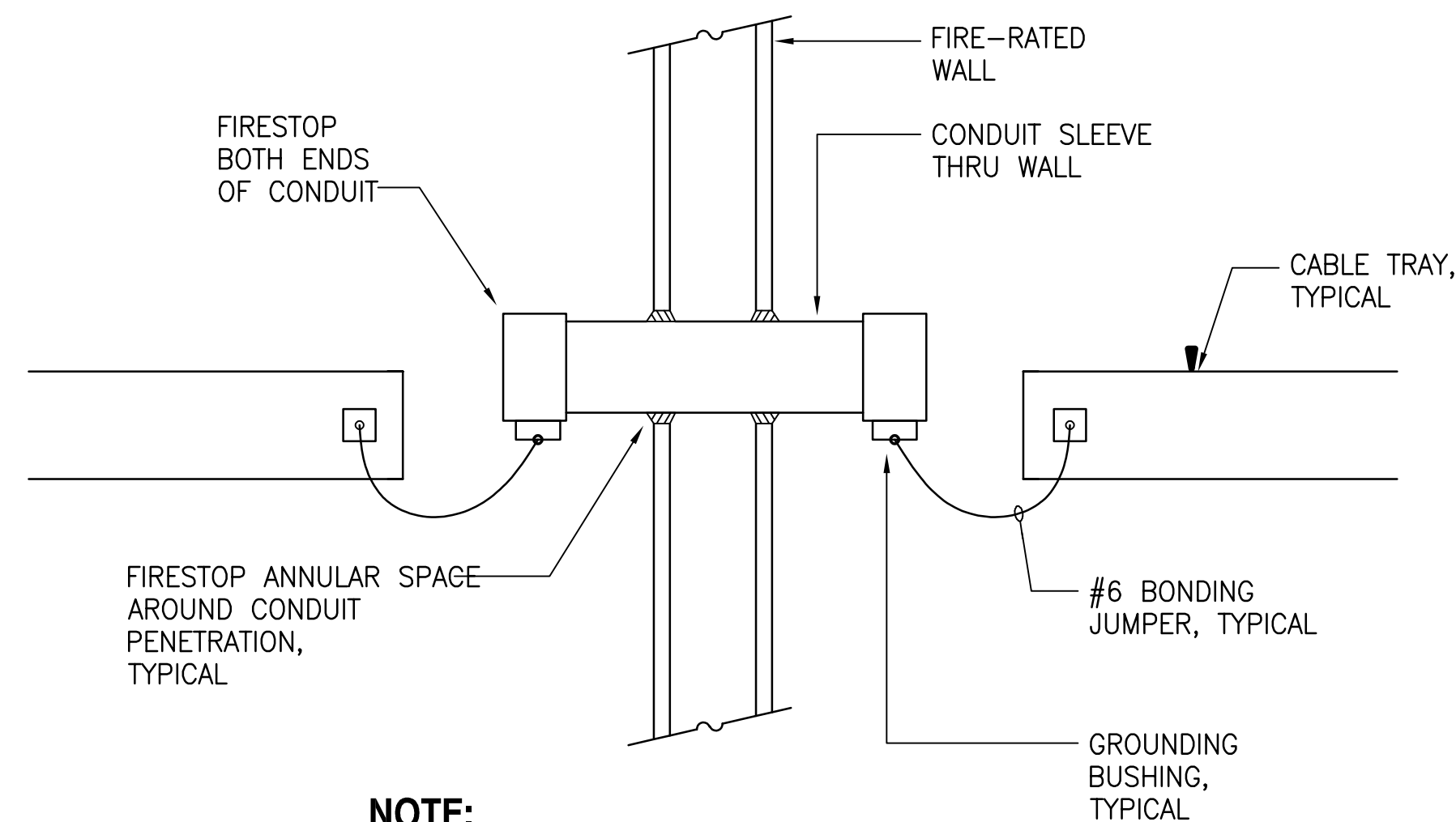
4 CABLE RUNWAY DROPOUT DETAIL
TC502 NOT TO SCALE



5 CABLE RUNWAY SUPPORT DETAIL
TC502 NOT TO SCALE

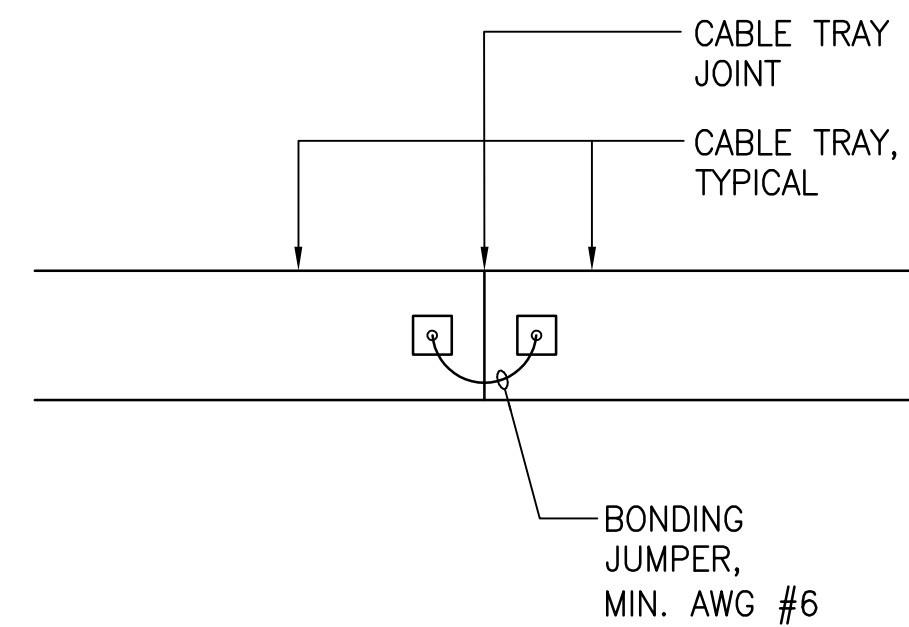


4 CABLE RUNWAY WALL SUPPORT DETAIL
TC502 NOT TO SCALE



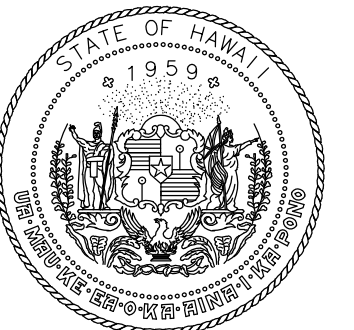
NOTE:
BONDING JUMPER CONNECTIONS TO CABLE TRAYS SHALL BE DONE VIA TWO-HOLE LUGS WITH NON-REVERSABLE COMPRESSION CRIMP. MECHANICAL LUG CONNECTIONS SHALL NOT BE USED.

5 CONDUIT SLEEVE/WALL PENETRATION BONDING DETAIL
TC502 NOT TO SCALE



NOTE:
BONDING JUMPER CONNECTIONS TO CABLE TRAYS SHALL BE DONE VIA TWO-HOLE LUGS WITH NON-REVERSABLE COMPRESSION CRIMP. MECHANICAL LUG CONNECTIONS SHALL NOT BE USED.

6 CABLE TRAY/RUNWAY SECTION BONDING DETAIL
TC502 NOT TO SCALE



Airports Division
DEPARTMENT OF TRANSPORTATION
STATE OF HAWAII



Michael-Shawn M. Zutsen
04/30/24
Licensed Expiration Date

This work was prepared by me or under my supervision.

DSGN.	DRWN.	CHKD.	APPD.
MMI	FCC	MMI	MMI

NO.	DATE	REVISIONS
-----	------	-----------

DATE

PROJECT TITLE :

NEW PASS AND ID OFFICE

AT
DANIEL K. INOUE INTERNATIONAL AIRPORT
HONOLULU, OAHU, HAWAII

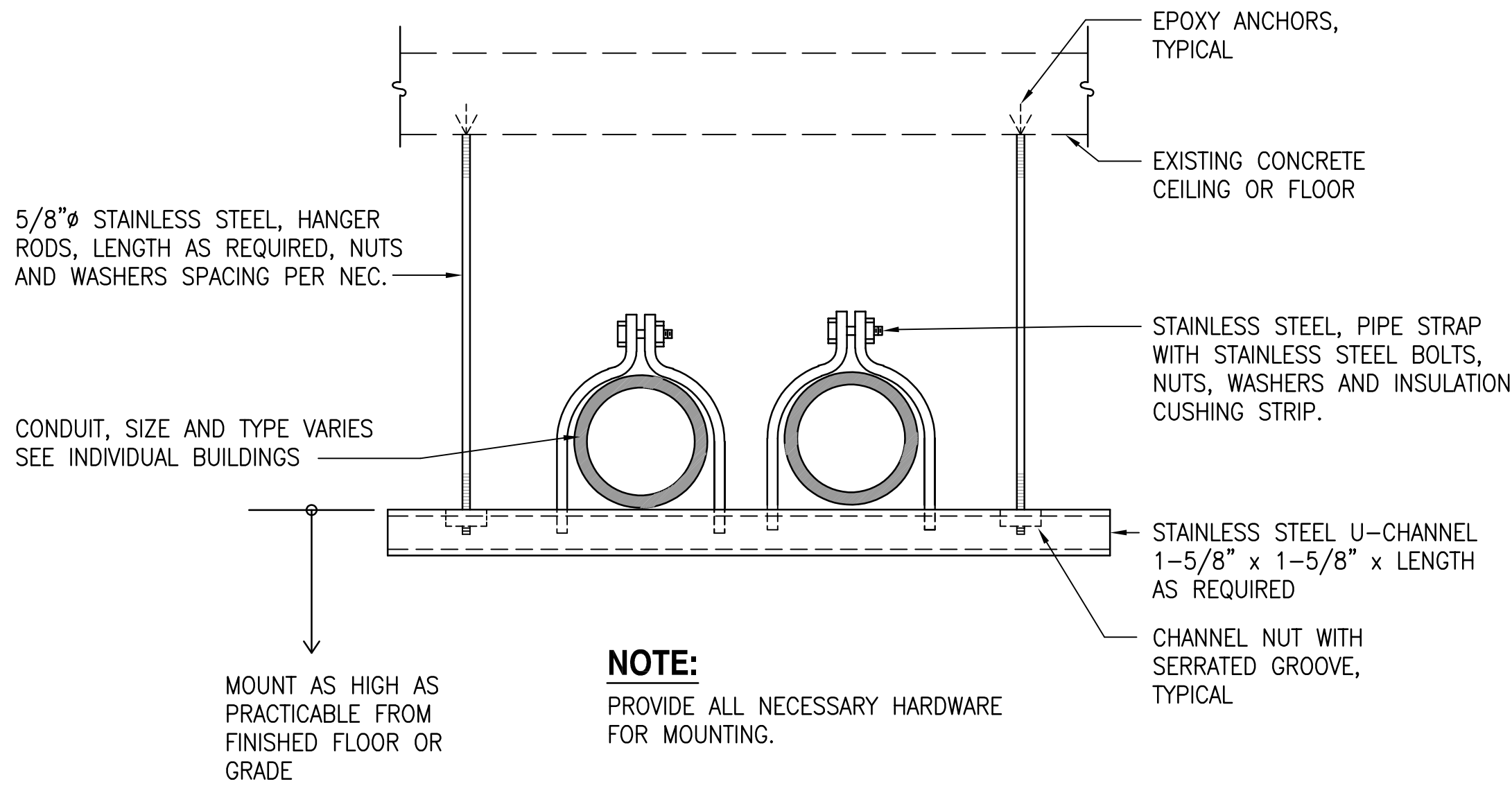
PROJECT NO.:

CO1322-63

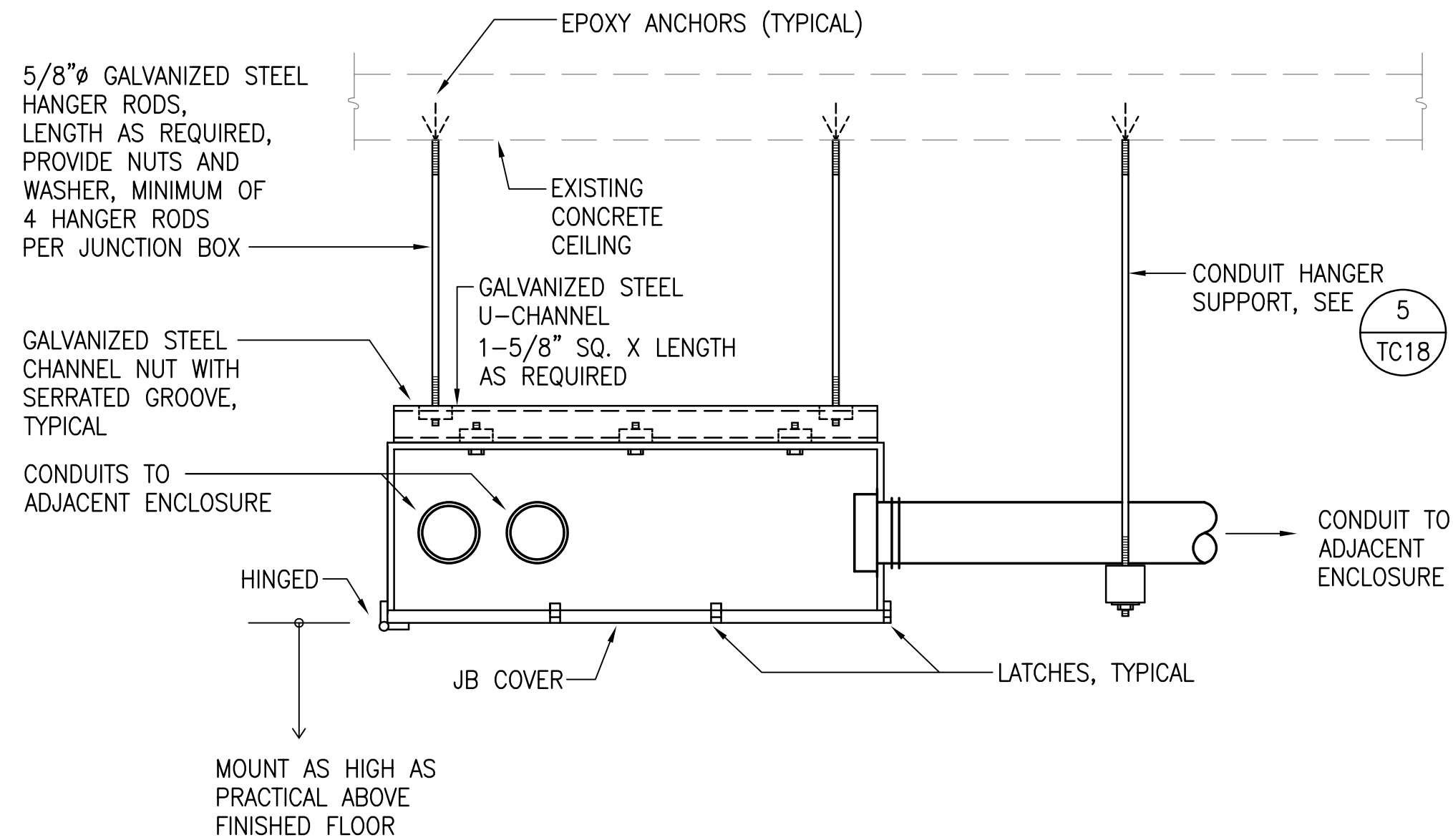
SHEET TITLE:

TELECOMMUNICATIONS
DETAILS

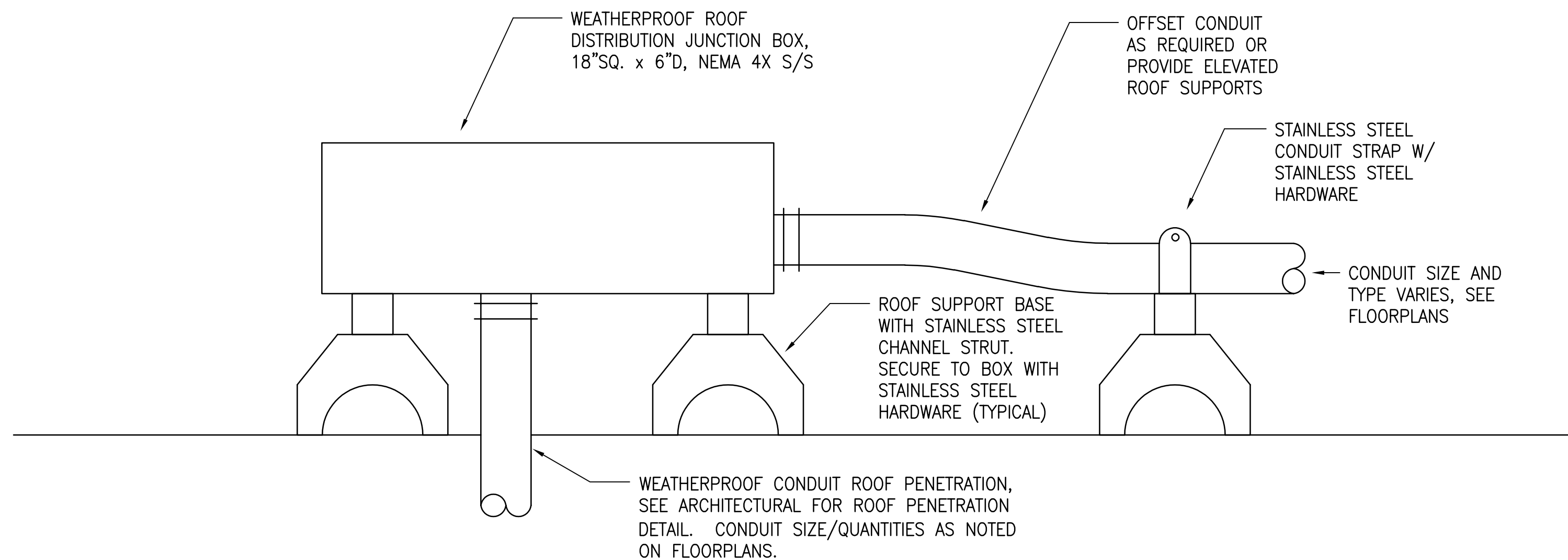
DATE :	DWG. NO.
12/21/22	TC502
SHEET :	
095 OF 100	



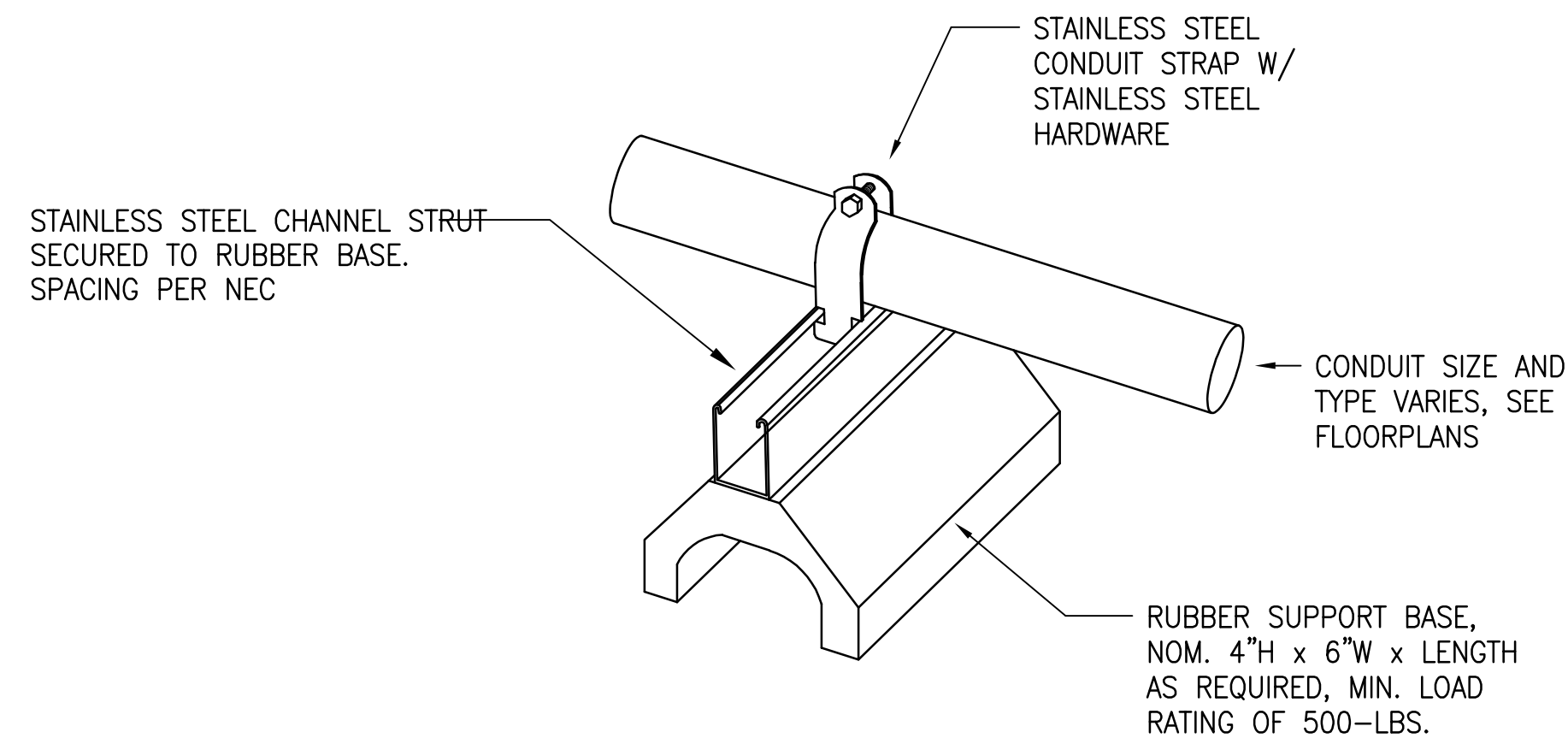
1 TYPICAL CEILING CONDUIT HANGAR SUPPORT DETAIL
TC503 NOT TO SCALE



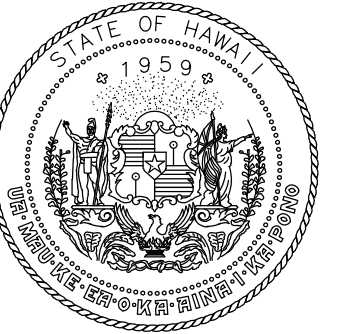
2 CEILING MOUNTED TELECOMMUNICATIONS JUNCTION BOX SUPPORT DETAIL
TC503 NOT TO SCALE



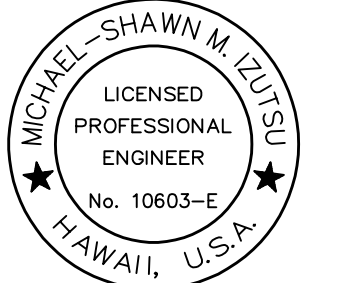
3 ROOFTOP DISTRIBUTION JUNCTION BOX MOUNTING DETAIL
TC503 NOT TO SCALE



4 TYPICAL ROOF CONDUIT SUPPORT DETAIL
TC503 NOT TO SCALE



Airports Division
DEPARTMENT OF TRANSPORTATION
STATE OF HAWAII



Michael-Shawn M. Zutsu
04/30/24
Licensed Expiration Date

This work was prepared by me or under my supervision.

DSGN.	DRWN.	CHKD.	APPD.
MMI	FCC	MMI	MMI

NO.	DATE	REVISIONS
-----	------	-----------

DATE

PROJECT TITLE :

NEW PASS AND ID OFFICE

AT
DANIEL K. INOUE INTERNATIONAL AIRPORT
HONOLULU, OAHU, HAWAII

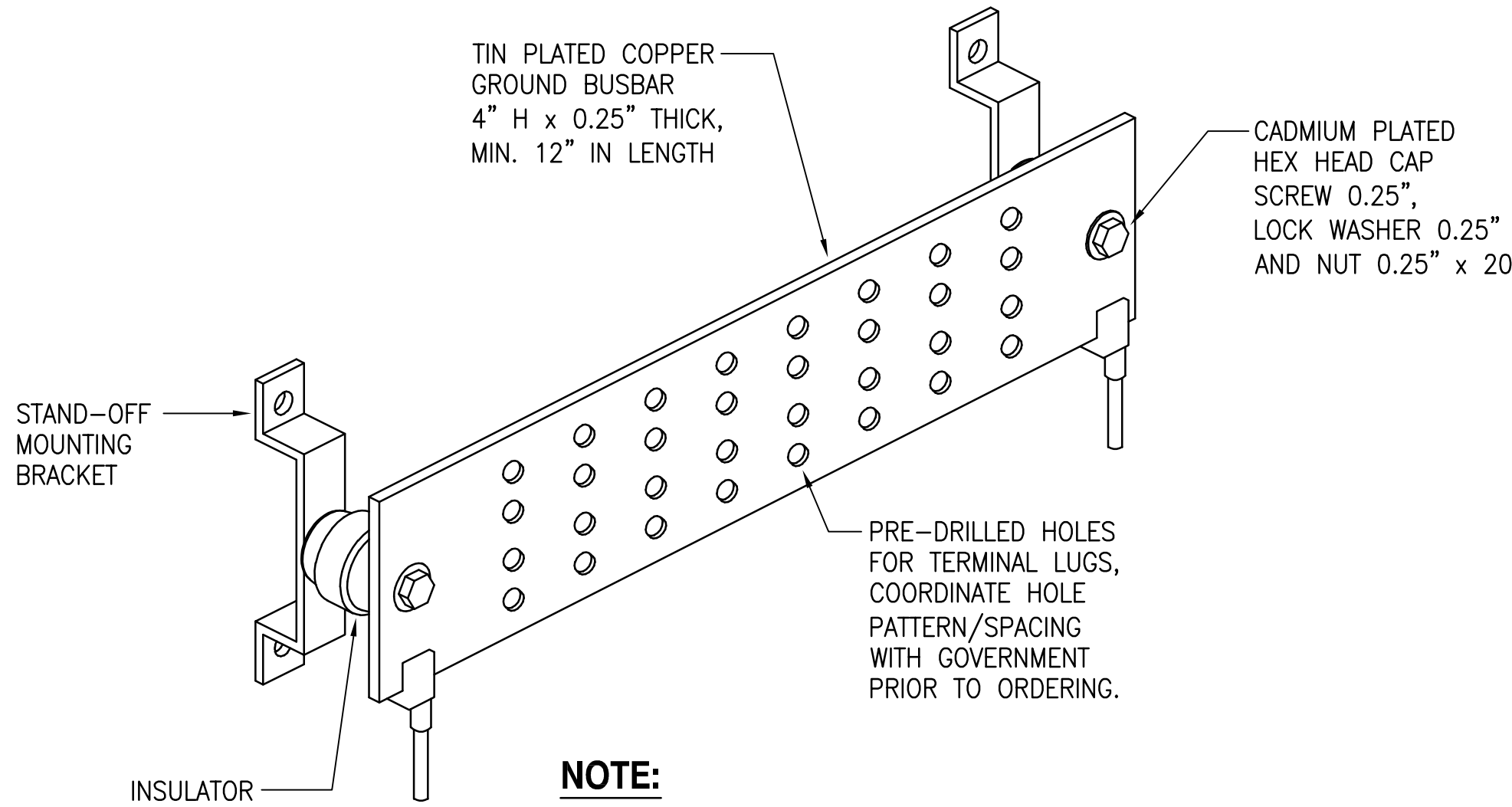
PROJECT NO.:

CO1322-63

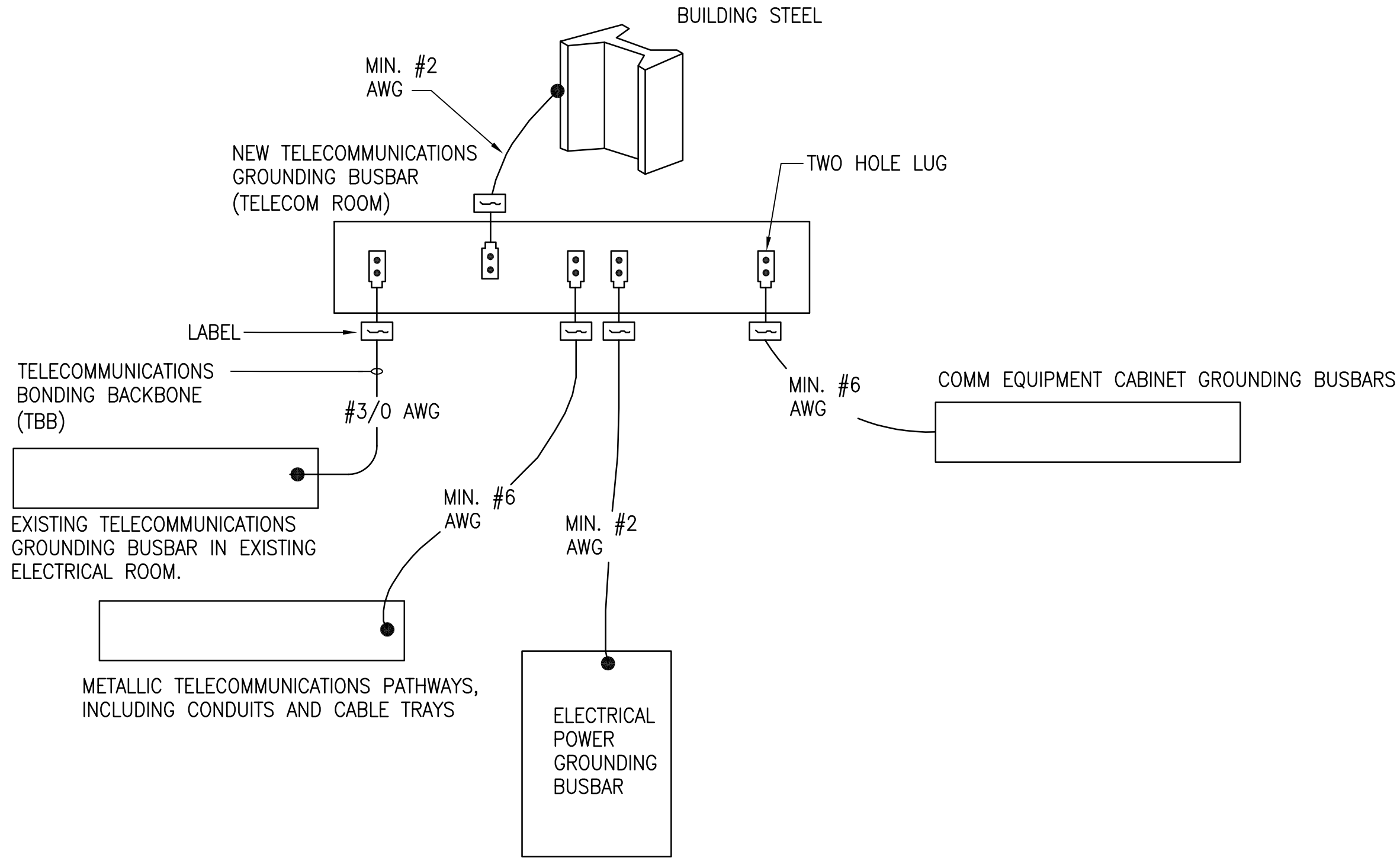
SHEET TITLE:

TELECOMMUNICATIONS
DETAILS

DATE :	DWG. NO.
12/21/22	TC503
SHEET :	
096 OF 100	

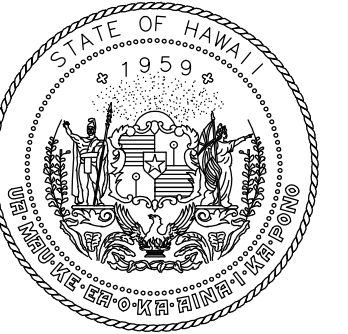


NOTE:
GROUND BUSBAR SHALL BE LABELED AND INSTALLED IN ACCORDANCE WITH MIL-STD-188-124-B. CONNECTIONS TO GROUND BUS SHALL BE VIA TWO-HOLE LUGS WITH NON-REVERSABLE COMPRESSION CRIMP. MECHANICAL LUG CONNECTIONS SHALL NOT BE USED.

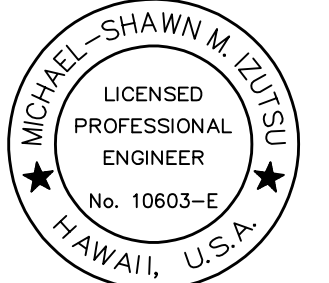


1 TELECOMMUNICATIONS GROUNDING BUSBAR DETAIL
TC504 NOT TO SCALE

2 TELECOMMUNICATIONS GROUNDING CONNECTION DIAGRAM
TC504 NOT TO SCALE



Airports Division
DEPARTMENT OF TRANSPORTATION
STATE OF HAWAII



Michael-Shawn M. Zupic
04/30/24
Licensed Expiration Date

This work was prepared by me or under my supervision.

DSGN.	DRWN.	CHKD.	APPD.
MMI	FCC	MMI	MMI

NO.	DATE	REVISIONS
-----	------	-----------

DATE

PROJECT TITLE :

NEW PASS AND ID OFFICE

AT
DANIEL K. INOUE INTERNATIONAL AIRPORT
HONOLULU, OAHU, HAWAII

PROJECT NO.:

CO1322-63

SHEET TITLE:

TELECOMMUNICATIONS
DETAILS

DATE :	DWG. NO.
12/21/22	TC504
SHEET :	
097 OF 100	