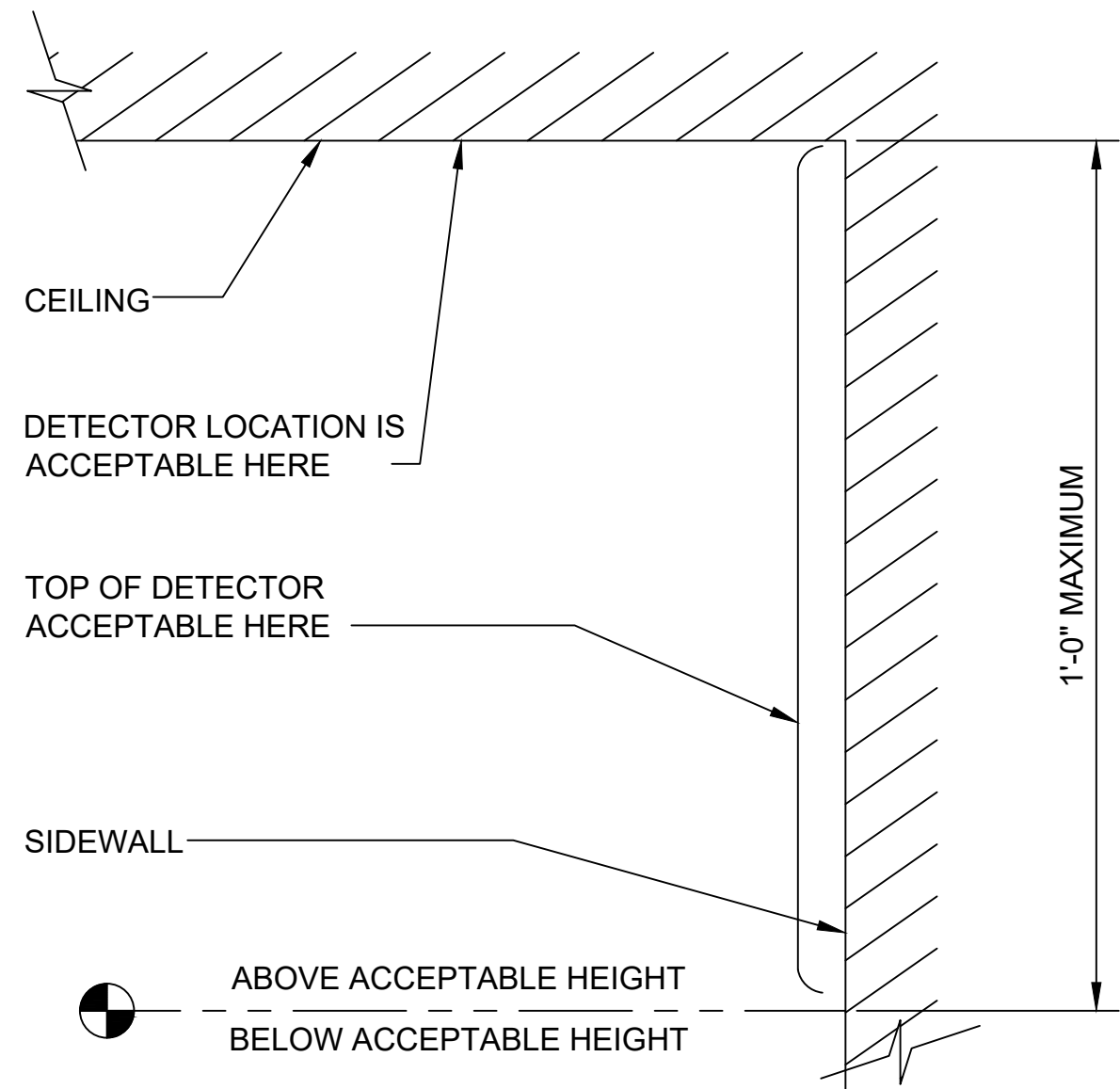
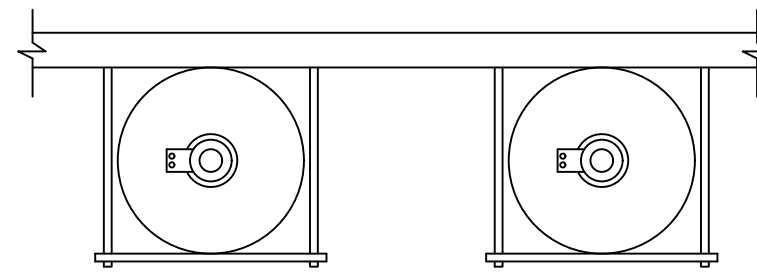


- * IF CEILING HEIGHT DOES NOT PERMIT MOUNTING HEIGHTS NOTED FOR AUDIO DEVICES WHILE LEAVING A MINIMUM OF 6-INCHES BETWEEN THE CEILING AND THE TOP OF THE AUDIO DEVICE, THE DEVICE SHALL BE MOUNTED AT 6-INCHES BELOW CEILING MEASURED TO THE TOP OF THE DEVICE.
- ** IF CEILING HEIGHT DOES NOT PERMIT MOUNTING HEIGHTS NOTED FOR VISUAL OR AUDIO/ VISUAL DEVICES WHILE LEAVING A MINIMUM OF 6-INCHES BETWEEN THE CEILING AND THE TOP OF THE VISUAL OR AUDIO/ VISUAL DEVICE, THE DEVICE SHALL BE MOUNTED AT 6-INCHES BELOW CEILING MEASURED TO THE TOP OF THE DEVICE.

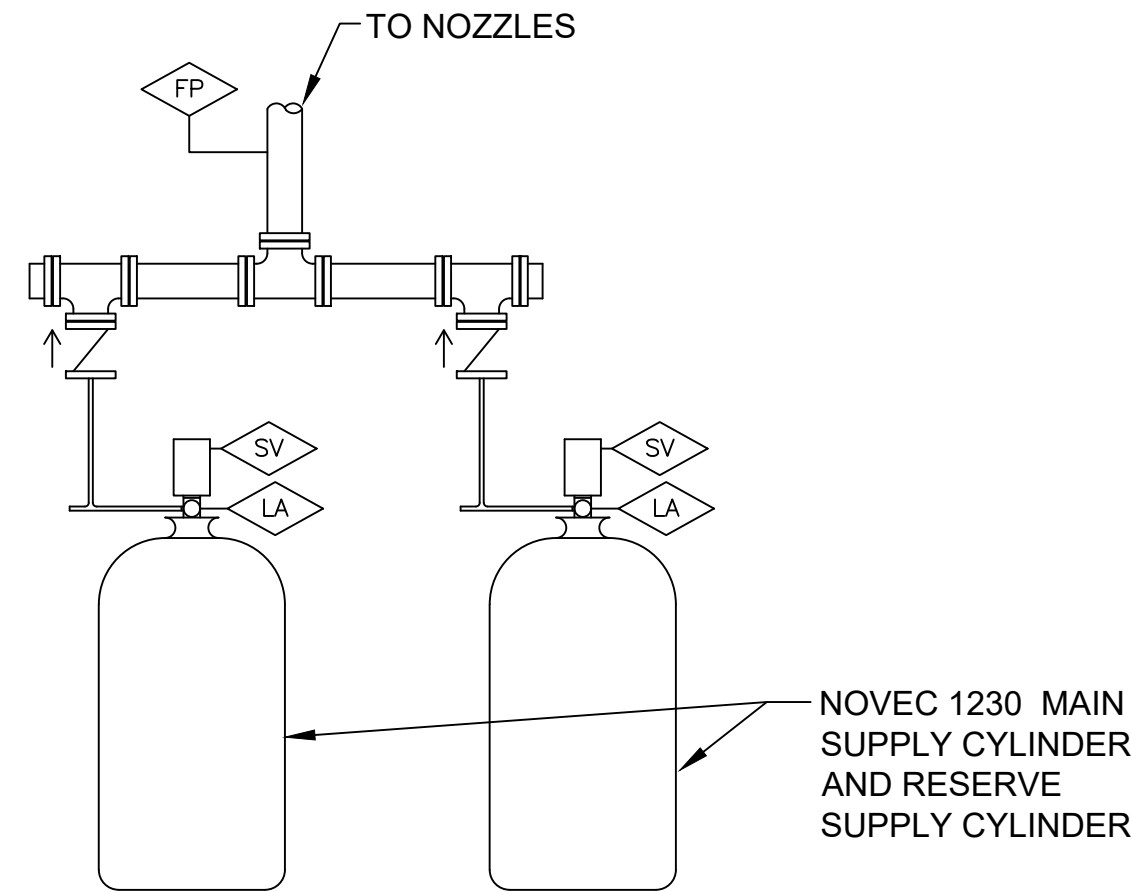
1
F-501
NTS
DEVICE MOUNTING DETAIL



2
F-501
NTS
DETECTOR MOUNTING DETAIL

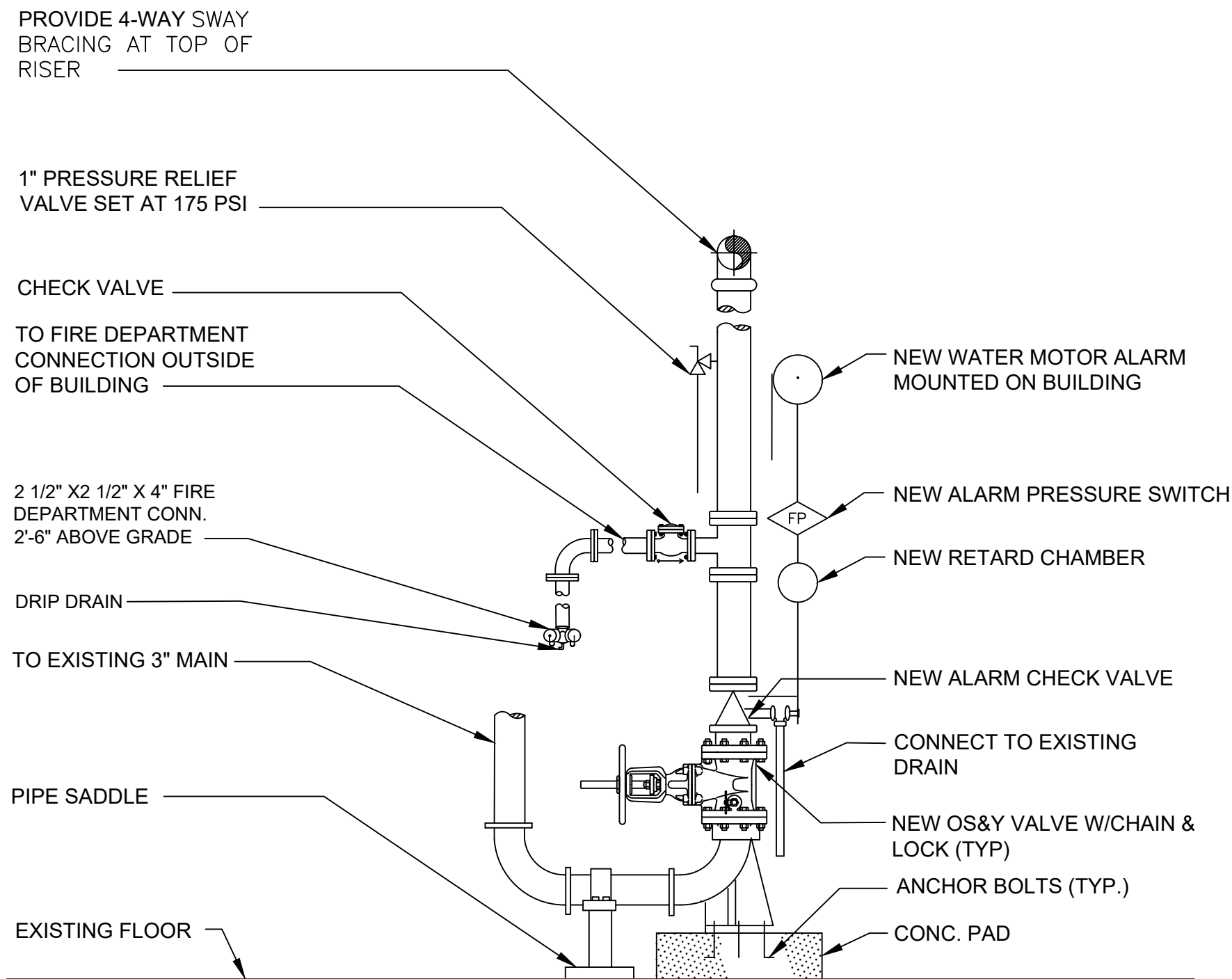


PLAN VIEW

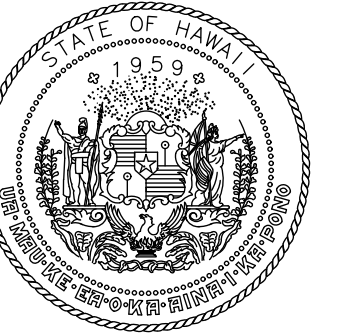


ELEVATION VIEW

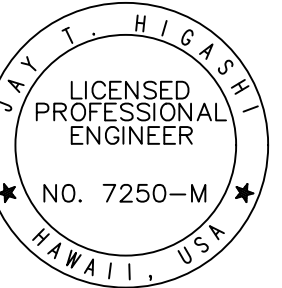
3
F-501
NTS
CLEAN AGENT CYLINDER MANIFOLD



4
F-501
NTS
WET FIRE SPRINKLER RISER DETAIL



Airports Division
DEPARTMENT OF TRANSPORTATION
STATE OF HAWAII



Jay T. Higashi
04/30/24
Licensed Expiration Date

This work was prepared by me or under my supervision.

DSGN.	DRWN.	CHKD.	APPD.
JTH	AM	JTH	JTH

NO.	DATE	REVISIONS
-----	------	-----------

DATE

PROJECT TITLE :

NEW PASS AND ID OFFICE

AT
DANIEL K. INOUE INTERNATIONAL AIRPORT
HONOLULU, HAWAII

PROJECT NO.:

CO1322-63

SHEET TITLE:

FIRE PROTECTION
TYPICAL DETAILS

DATE :

12/21/22

SHEET :

82 OF 100 SHEETS

DWG. NO.

F-501