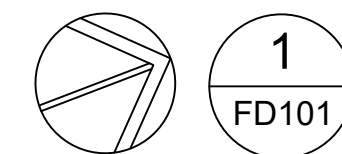
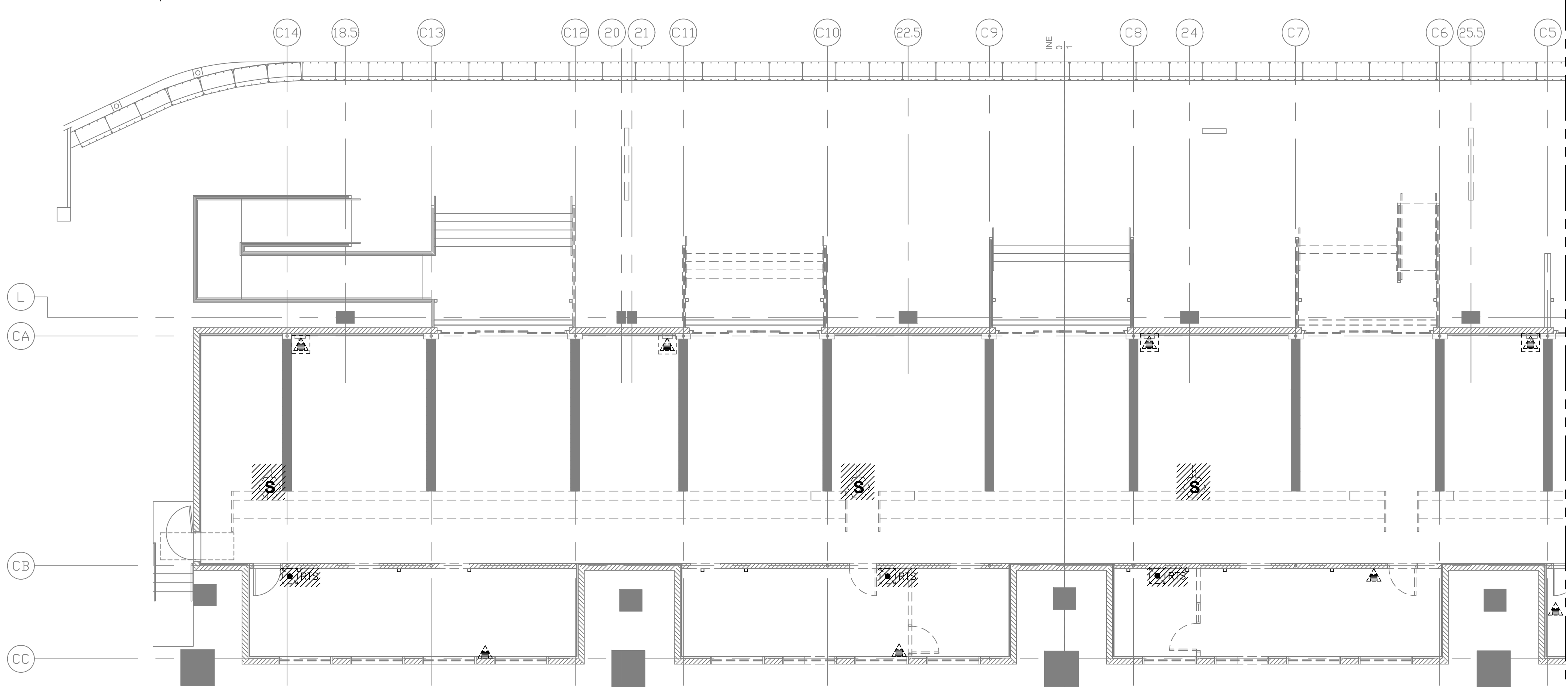
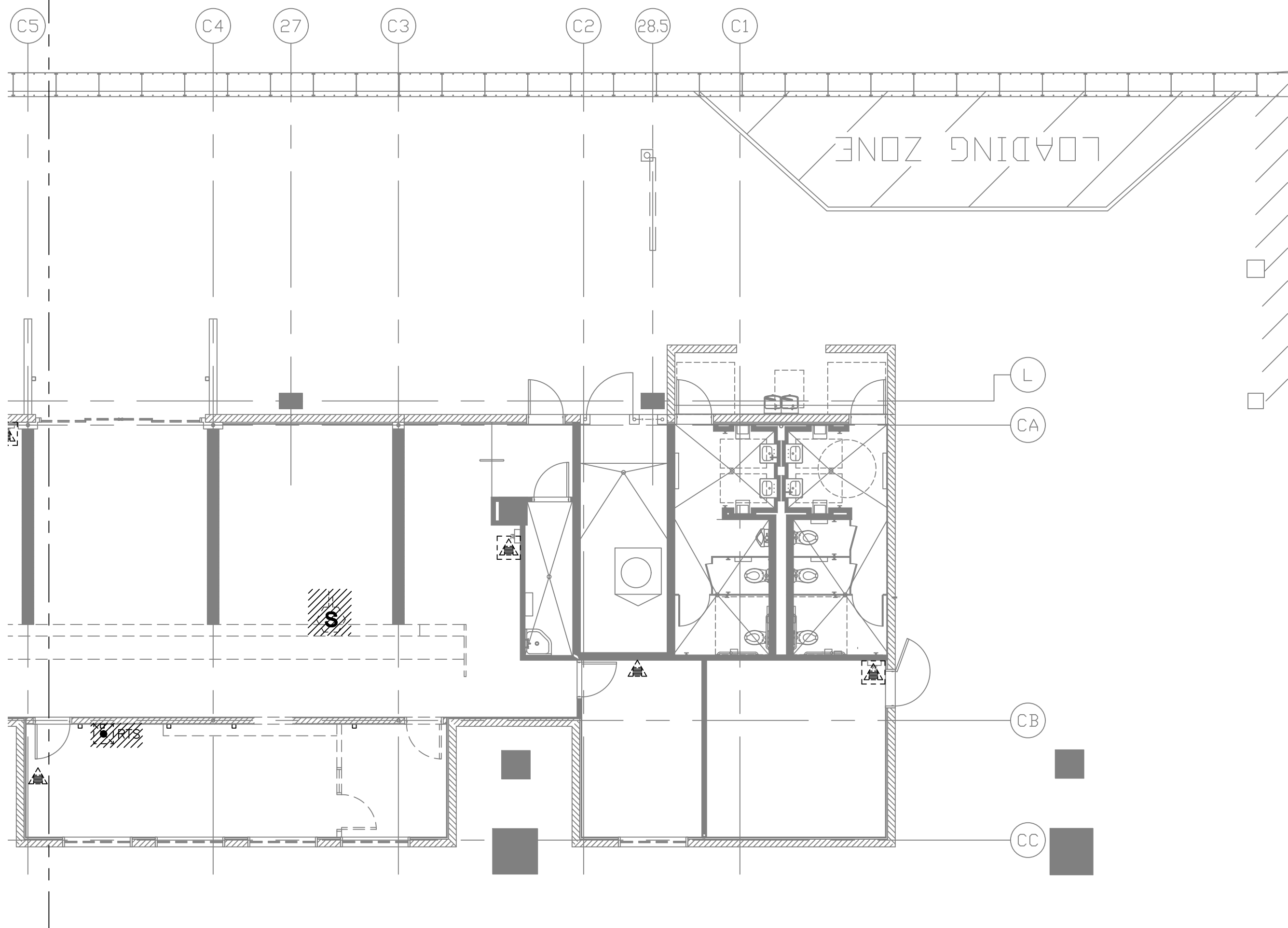
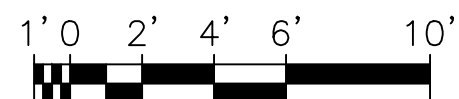


MATCHLINE FD101 / 1

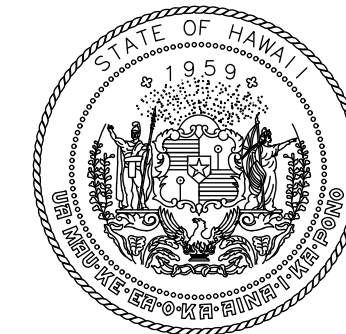


FIRE ALARM DEMOLITION FLOOR PLAN
SCALE: 3/16"= 1'-0"

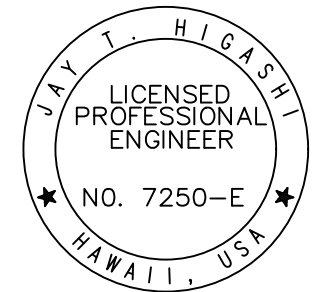


GENERAL DEMOLITION NOTES:

1. REMOVE AND REPLACE ALL DUCT SMOKE DETECTORS. SEE SHEET FA101 FOR DUCT SMOKE DETECTOR LOCATIONS.
2. REMOVE AND REPLACE ALL REMOTE TEST SWITCHES. SEE SHEET FA101 FOR REMOTE TEST SWITCH LOCATIONS.



Airports Division
DEPARTMENT OF TRANSPORTATION
STATE OF HAWAII



J. T. Higashi
04/30/24
/ Licensed Expiration Date

This work was prepared by me or under my supervision.

DSGN.	DRWN.	CHKD.	APPD.
JTH	AM	JTH	JTH

NO.	DATE	REVISIONS
-----	------	-----------

DATE

PROJECT TITLE :

NEW PASS AND ID OFFICE

AT
DANIEL K. INOUE INTERNATIONAL AIRPORT
HONOLULU, HAWAII

PROJECT NO.:

CO1322-63

SHEET TITLE:

**FIRE ALARM
DEMOLITION
FLOOR PLAN**

DATE :
12/21/22
SHEET :

79 OF 100 SHEETS

DWG. NO.

FD101