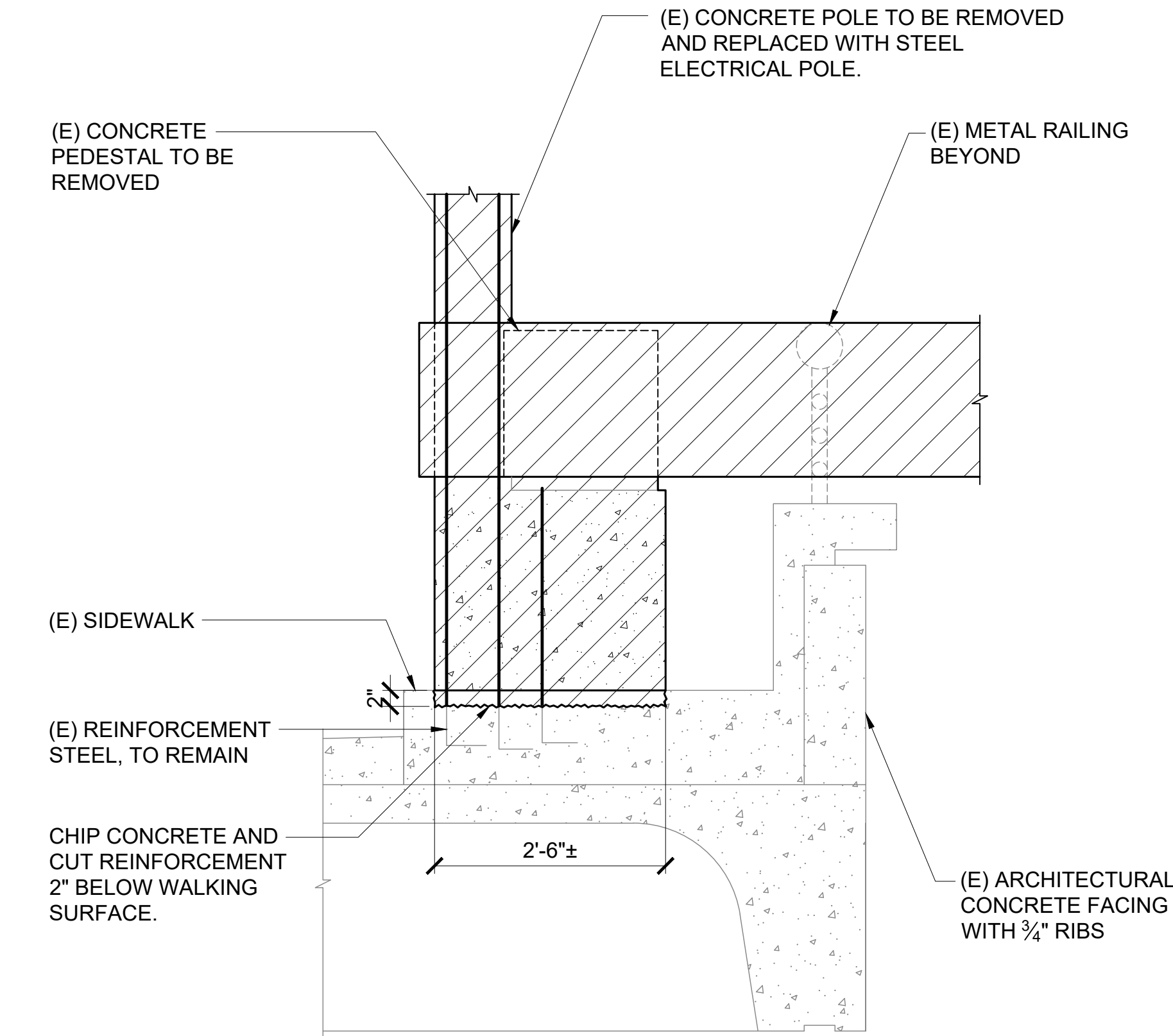
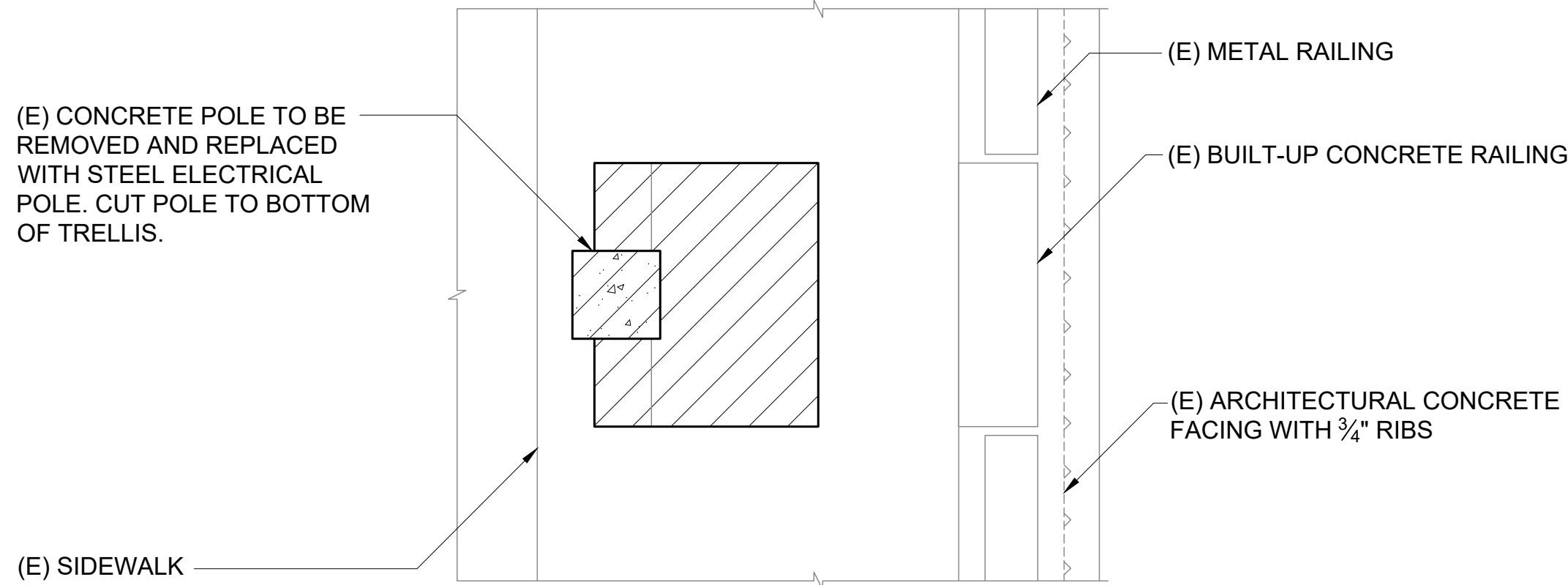


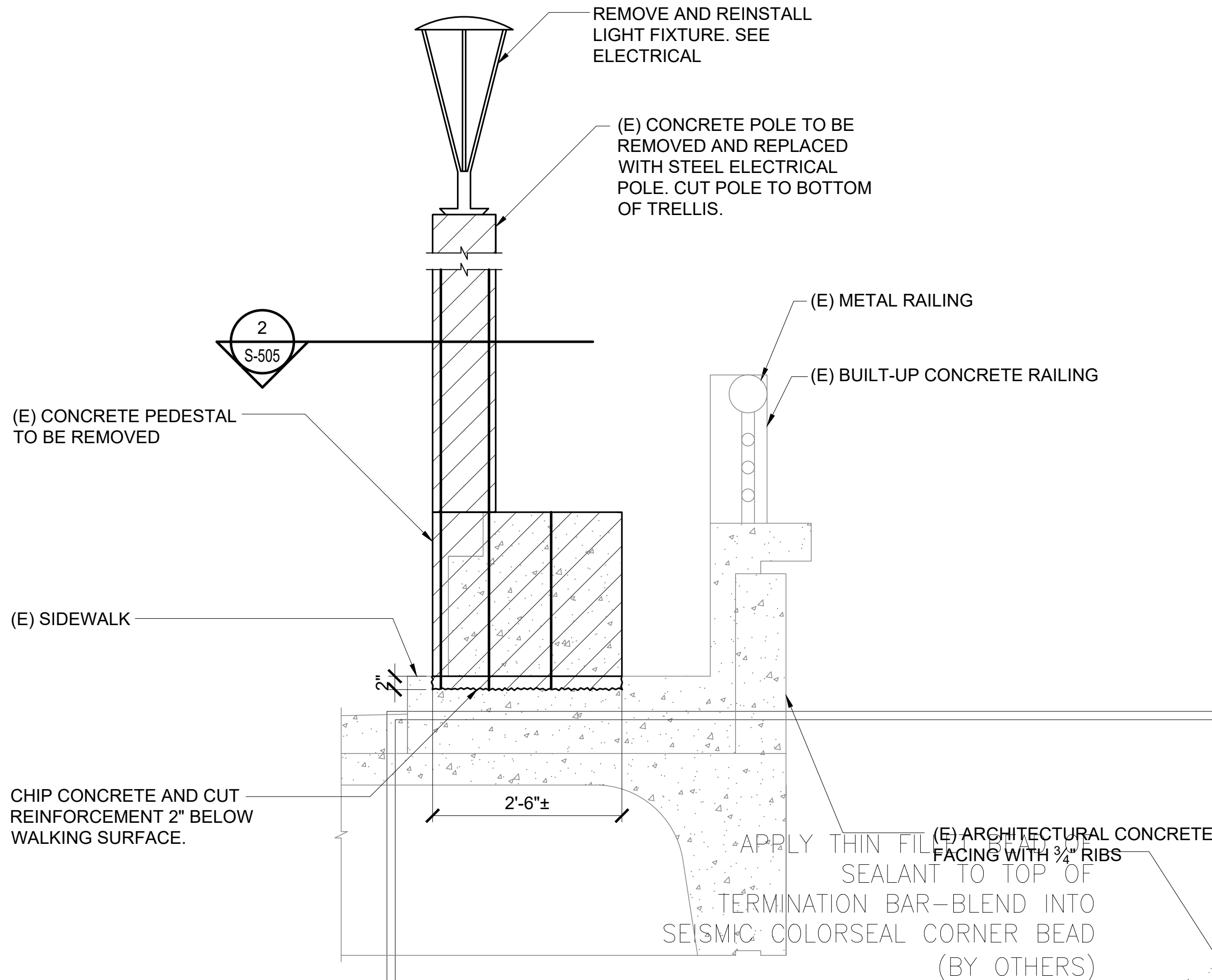
P:\S\151-5200\183 DOT Airports - 2nd and 3rd Level Roadway Improvements\004 Drawings\Structural\AutoCAD_format\2022-09-14 Phase 1 - Prebid Changes\0-08 S-500 Demolition Details.dwg 9/20/2022 12:19:11 PM mgoo



1 TRELLIS DEMOLITION DETAIL AT PEDESTAL
S-505 SCALE: 3/4" = 1'-0"

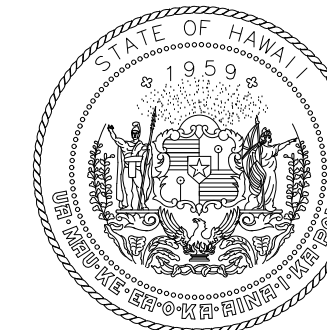


2 DIAMOND HEAD WING COLUMN DEMOLITION PLAN AT REMOVED TRELLIS
S-505 SCALE: 3/4" = 1'-0"

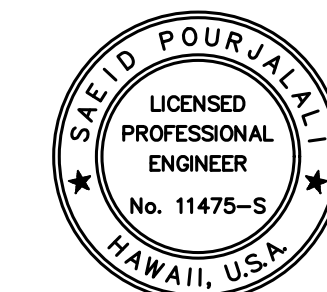


3 DIAMOND HEAD WING COLUMN DEMOLITION ELEVATION AT REMOVED TRELLIS
S-505 SCALE: 3/4" = 1'-0"

LEGEND:
TO BE REMOVED



Airports Division
DEPARTMENT OF TRANSPORTATION
STATE OF HAWAII



Saad Pourjafari
04/30/2024
Licensed Expiration Date

This work was prepared by me or under my supervision

DSGN.	DRWN.	CHKD.	APPD.
MG	MG	SP	

KEY PLAN / NOTES:

NO.	DATE	REVISIONS
-----	------	-----------

CONSTRUCTION DOCUMENTS

SEPTEMBER, 2022
DATE

PROJECT TITLE :

EWA AND DH CONCOURSE
ROADWAY IMPROVEMENTS
PHASE 1

AT
DANIEL K. INOUE INTERNATIONAL AIRPORT
HONOLULU, OAHU, HAWAII

PROJECT NO.:

AO1043-32

SHEET TITLE:

TRELLIS DEMOLITION DETAILS

DATE :

SEPTEMBER, 2022

SHEET :

41 OF 247 SHEETS

DWG. NO.

S-505