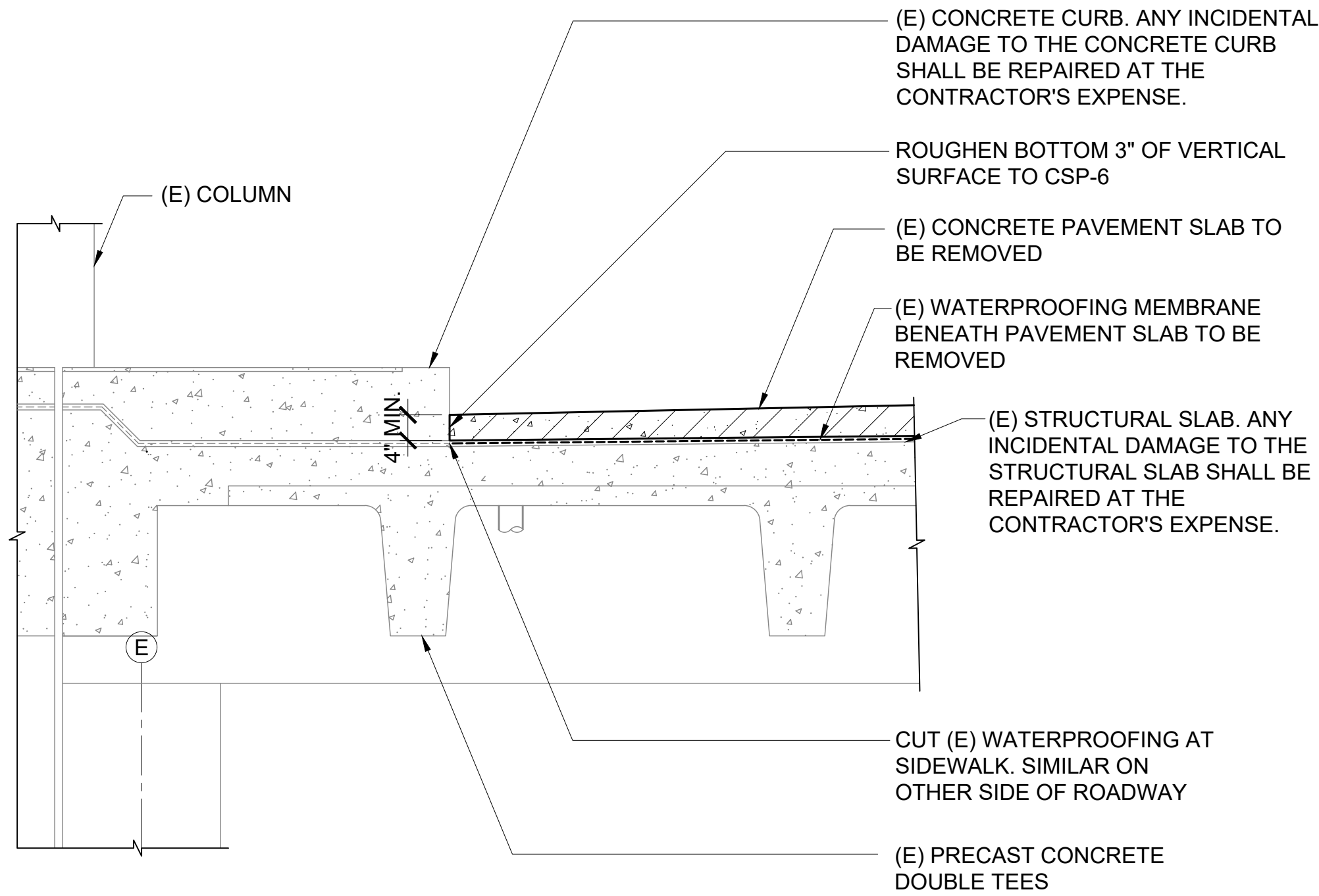
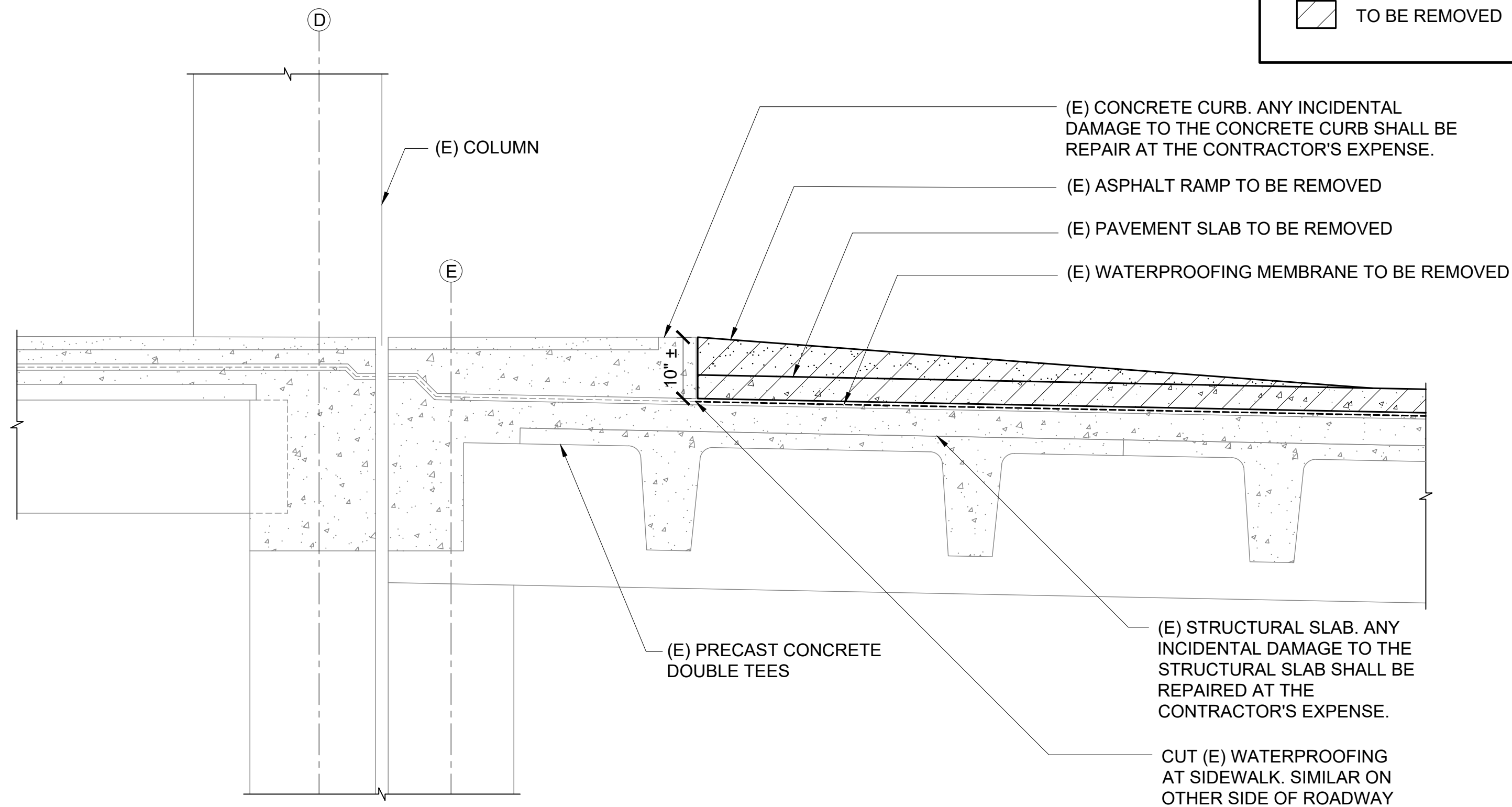


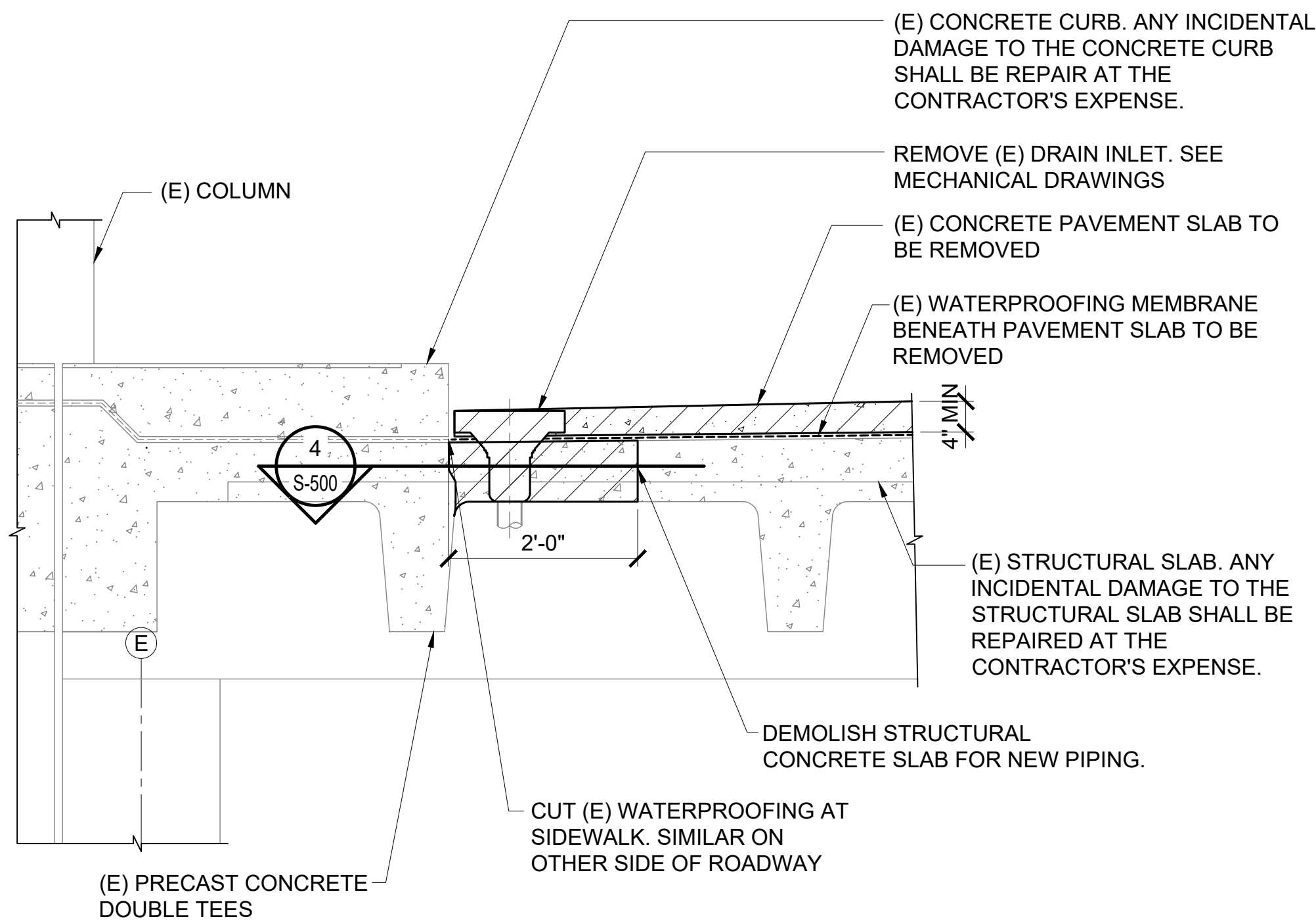
P:\S\151-520\15183 DOT Airports - 2nd and 3rd Level Roadway Improvements\004 Drawings\Structural\AutoCAD\_format\2022-09-14 Phase 1 - Prebid Changes\0-08 S-500 Demolition Details.dwg 9/20/2022 12:19:08 PM, mgoo



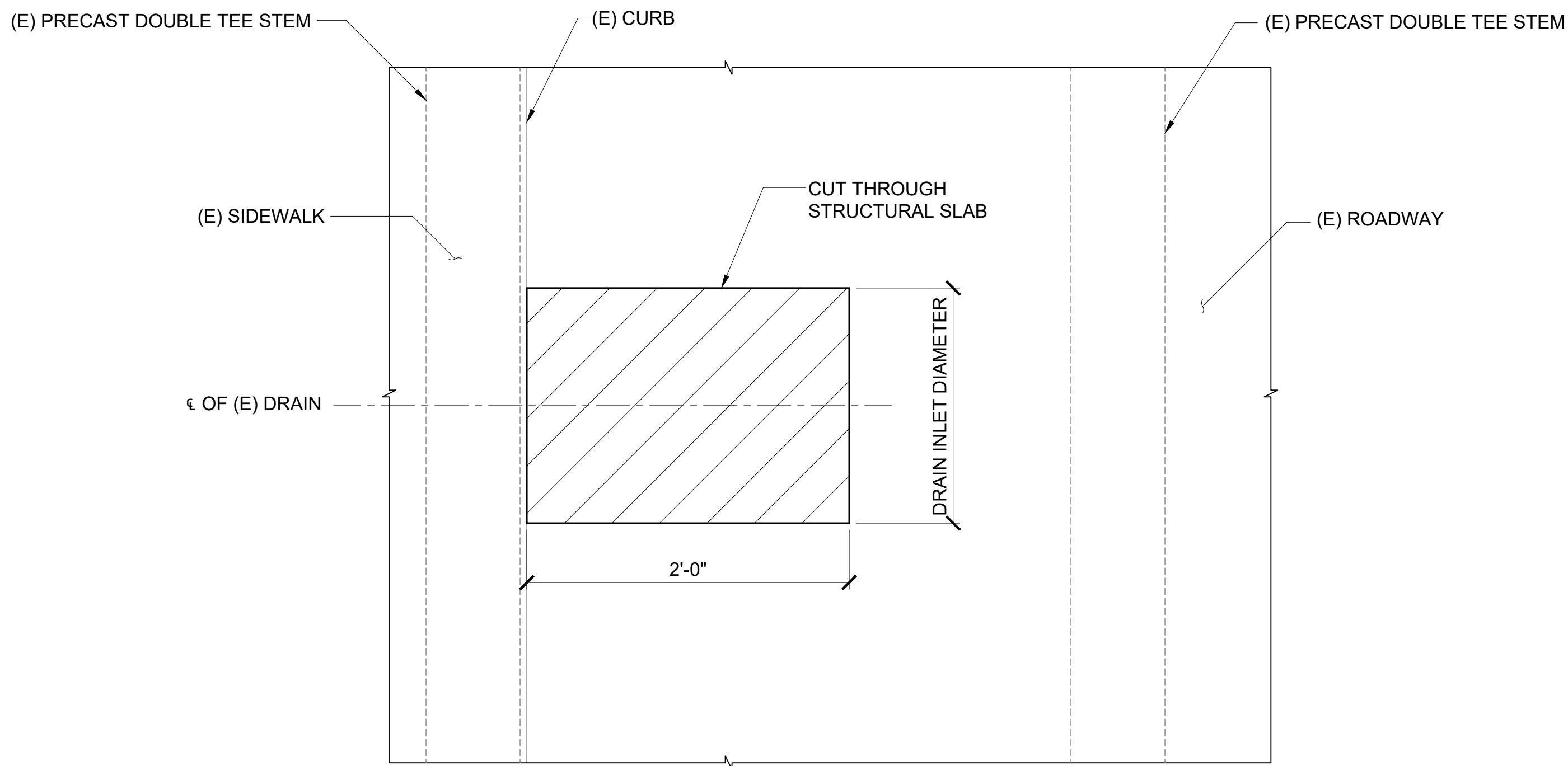
1 ROADWAY PAVEMENT DEMOLITION NEAR SIDEWALK  
S-500 SCALE: 3/4" = 1'-0"



2 ROADWAY PAVEMENT DEMOLITION AT TURN AROUND  
S-500 SCALE: 3/4" = 1'-0"



3 ROADWAY PAVEMENT DEMOLITION AT DRAIN  
S-500 SCALE: 3/4" = 1'-0"



4 DRAIN DEMOLITION PLAN THROUGH STRUCTURAL SLAB  
S-500 SCALE: 1 1/2" = 1'-0"

LEGEND:  
TO BE REMOVED

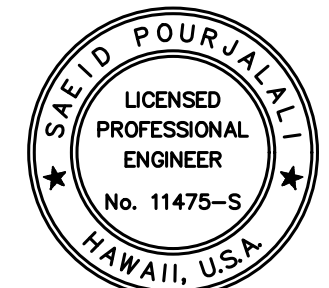
(E) CONCRETE CURB. ANY INCIDENTAL  
DAMAGE TO THE CONCRETE CURB SHALL BE  
REPAIR AT THE CONTRACTOR'S EXPENSE.  
(E) ASPHALT RAMP TO BE REMOVED  
(E) PAVEMENT SLAB TO BE REMOVED  
(E) WATERPROOFING MEMBRANE TO BE REMOVED

(E) STRUCTURAL SLAB. ANY  
INCIDENTAL DAMAGE TO THE  
STRUCTURAL SLAB SHALL BE  
REPAIRED AT THE  
CONTRACTOR'S EXPENSE.  
CUT (E) WATERPROOFING  
AT SIDEWALK. SIMILAR ON  
OTHER SIDE OF ROADWAY

NOTES:  
1. PROVIDE SHORING FOR THE SLAB UNTIL  
CONCRETE REPAIRS ARE COMPLETED.  
2. ENSURE EXISTING REINFORCEMENT STEEL  
AND INTERIOR FURNITURE IS NOT  
DAMAGED DURING CONSTRUCTION. USE  
GROUND PENETRATING RADAR TO LOCATE  
STEEL PRIOR TO DEMOLISHING CONCRETE.



Airports Division  
DEPARTMENT OF TRANSPORTATION  
STATE OF HAWAII



*Saif Pourjafari*  
04/30/2024  
Licensed Expiration Date  
This work was prepared by me or under my supervision

DSGN.	DRWN.	CHKD.	APPD.
MG	MG	SP	

#### KEY PLAN / NOTES:

NO.	DATE	REVISIONS
-----	------	-----------

### CONSTRUCTION DOCUMENTS

SEPTEMBER, 2022  
DATE

#### PROJECT TITLE :

**EWA AND DH CONCOURSE  
ROADWAY IMPROVEMENTS  
PHASE 1**

AT  
DANIEL K. INOUE INTERNATIONAL AIRPORT  
HONOLULU, OAHU, HAWAII

#### PROJECT NO.:

**AO1043-32**

#### SHEET TITLE:

### ROADWAY PAVEMENT DEMOLITION DETAILS

DATE :  
SEPTEMBER, 2022  
SHEET :

DWG. NO.

**S-500**

36 OF 247 SHEETS