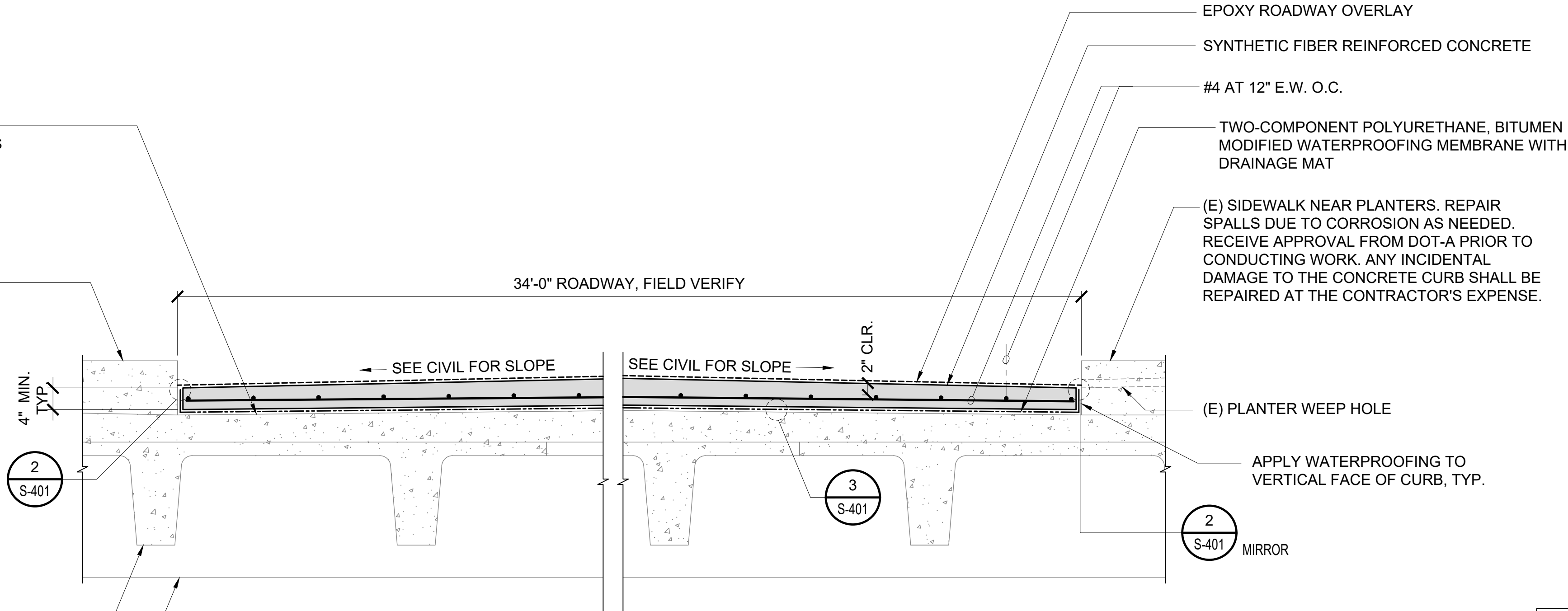


P:\S\151-5200\183 DOT Airports - 2nd and 3rd Level Roadway Improvements\004 Drawings\Structural\AutoCAD_format\2022-09-14 Phase 1 - Prebid Changes\0-07 S-400 Repair Details.dwg, 9/20/2022 12:19:03 PM, mgoo

(E) STRUCTURAL CONCRETE DECK
REPAIR SPALLS DUE TO CORROSION AS
NEEDED. RECEIVE APPROVAL FROM
DOT-A PRIOR TO CONDUCTING WORK.
SPALLS DUE TO DEMOLITION SHALL BE
REPAIRED AT THE CONTRACTOR'S
EXPENSE

(E) CONCRETE CURB NEAR GATES.
REPAIR SPALLS DUE TO CORROSION
AS NEEDED. RECEIVE APPROVAL
FROM DOT-A PRIOR TO
CONDUCTING WORK. ANY
INCIDENTAL DAMAGE TO THE
CONCRETE CURB SHALL BE
REPAIRED AT THE CONTRACTOR'S
EXPENSE.

(E) PRECAST CONCRETE
DOUBLE TEES
(E) CONCRETE BEAM
BEYOND

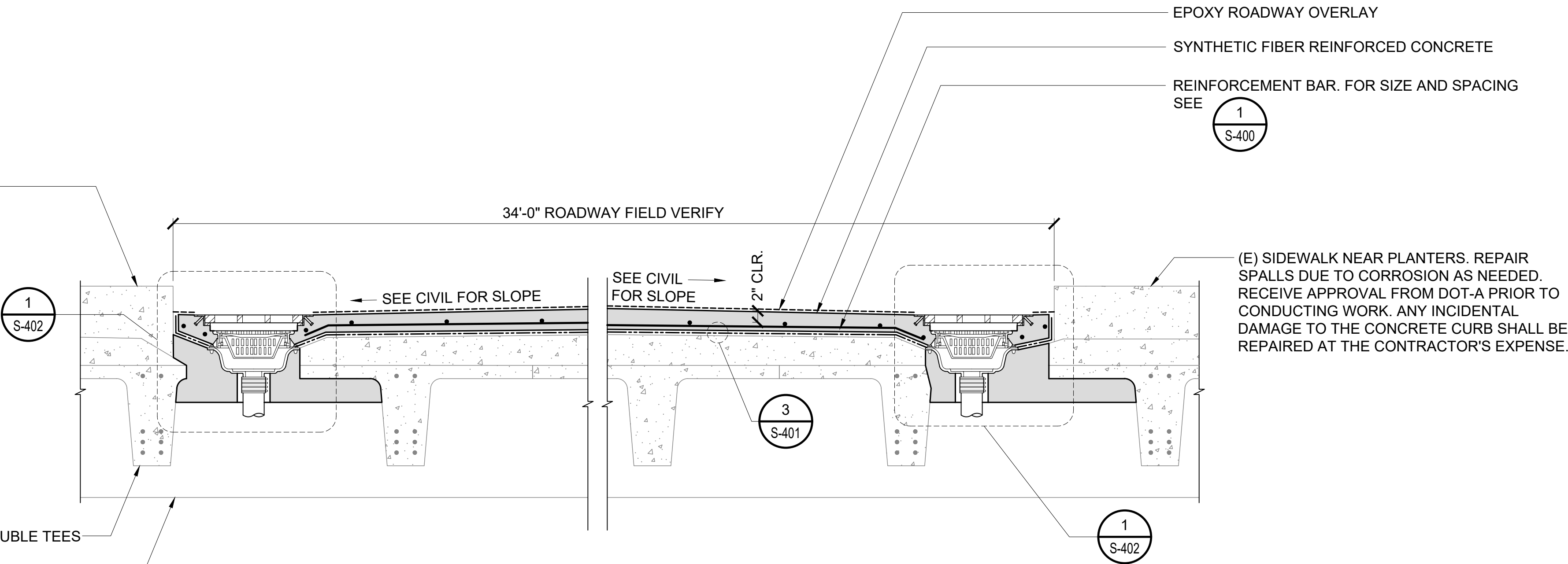


NOTE:
WATERPROOFING SHALL BE MINIMUM 120
MILES. MINIMUM 20 YEAR WARRANTY WITH
USE OF DRAINAGE MAP

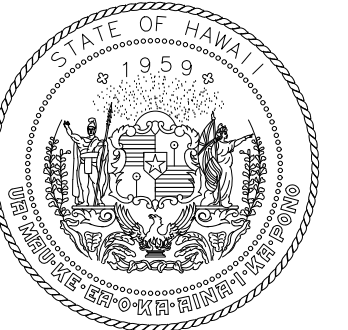
1 DH AND EWA SECOND LEVEL TYPICAL ROADWAY REPAIR SECTION
S-400 SCALE: 3/4" = 1'-0"

(E) CONCRETE CURB NEAR GATES.
REPAIR SPALLS DUE TO CORROSION
AS NEEDED. RECEIVE APPROVAL
FROM DOT-A PRIOR TO
CONDUCTING WORK. ANY
INCIDENTAL DAMAGE TO THE
CONCRETE CURB SHALL BE
REPAIRED AT THE CONTRACTOR'S
EXPENSE.

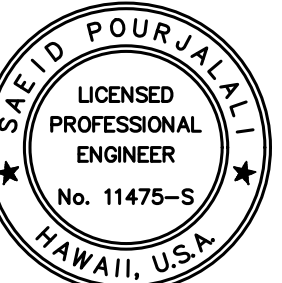
(E) PRECAST CONCRETE DOUBLE TEES
(E) CONCRETE BEAM BEYOND



2 DH AND EWA SECOND LEVEL ROADWAY REPAIR SECTION AT DRAIN INLET
S-400 SCALE: 3/4" = 1'-0"



Airports Division
DEPARTMENT OF TRANSPORTATION
STATE OF HAWAII



Saad Pourfalahi
04/30/2024

Licensed Expiration Date

This work was prepared by me or under my supervision

DSGN.	DRWN.	CHKD.	APPD.
MG	MG	SP	

KEY PLAN / NOTES:

NO.	DATE	REVISIONS
-----	------	-----------

CONSTRUCTION DOCUMENTS

SEPTEMBER, 2022
DATE

PROJECT TITLE :

**EWA AND DH CONCOURSE
ROADWAY IMPROVEMENTS
PHASE 1**

AT
DANIEL K. INOUE INTERNATIONAL AIRPORT
HONOLULU, OAHU, HAWAII

PROJECT NO.:

AO1043-32

SHEET TITLE:

PAVEMENT REPAIR DETAILS

DATE :

SEPTEMBER, 2022

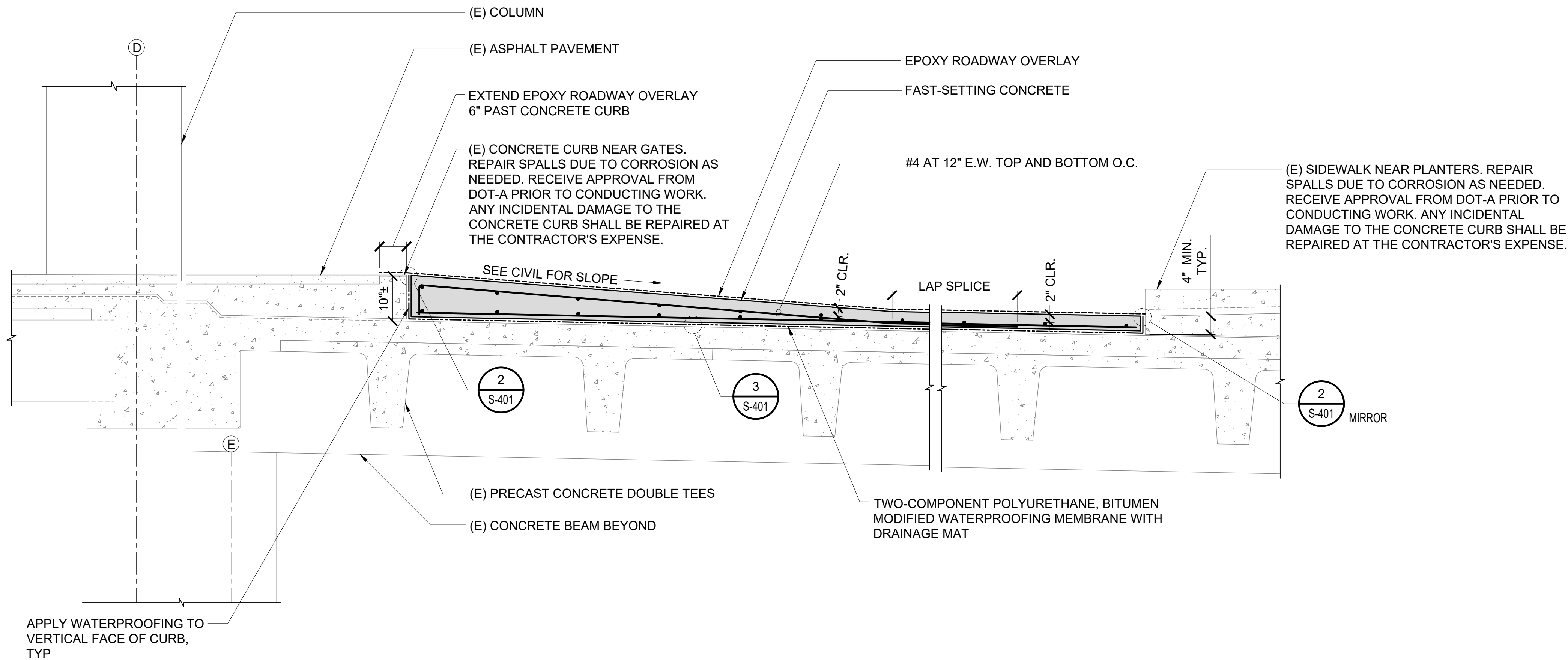
SHEET :

30 OF 247 SHEETS

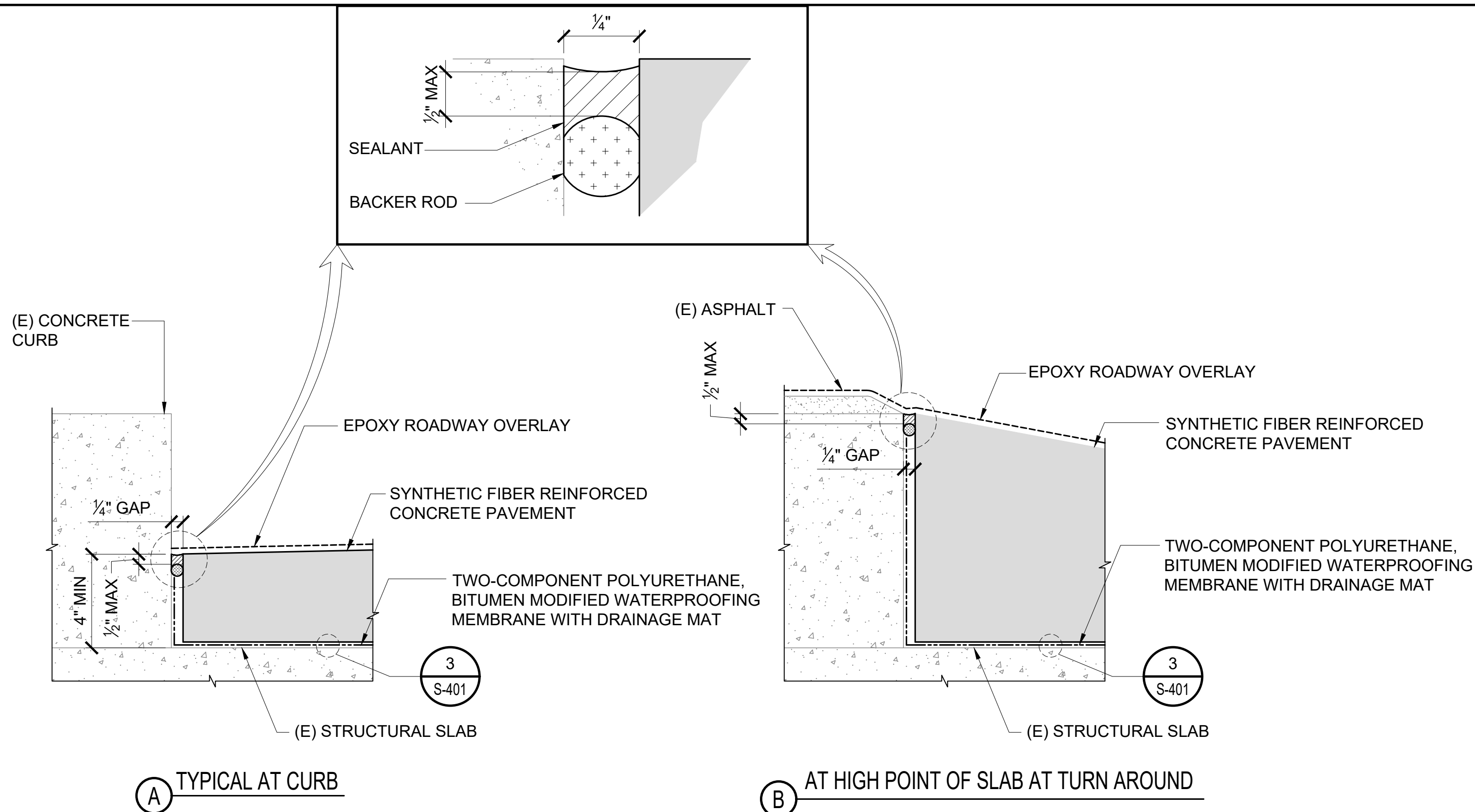
DWG. NO.

S-400

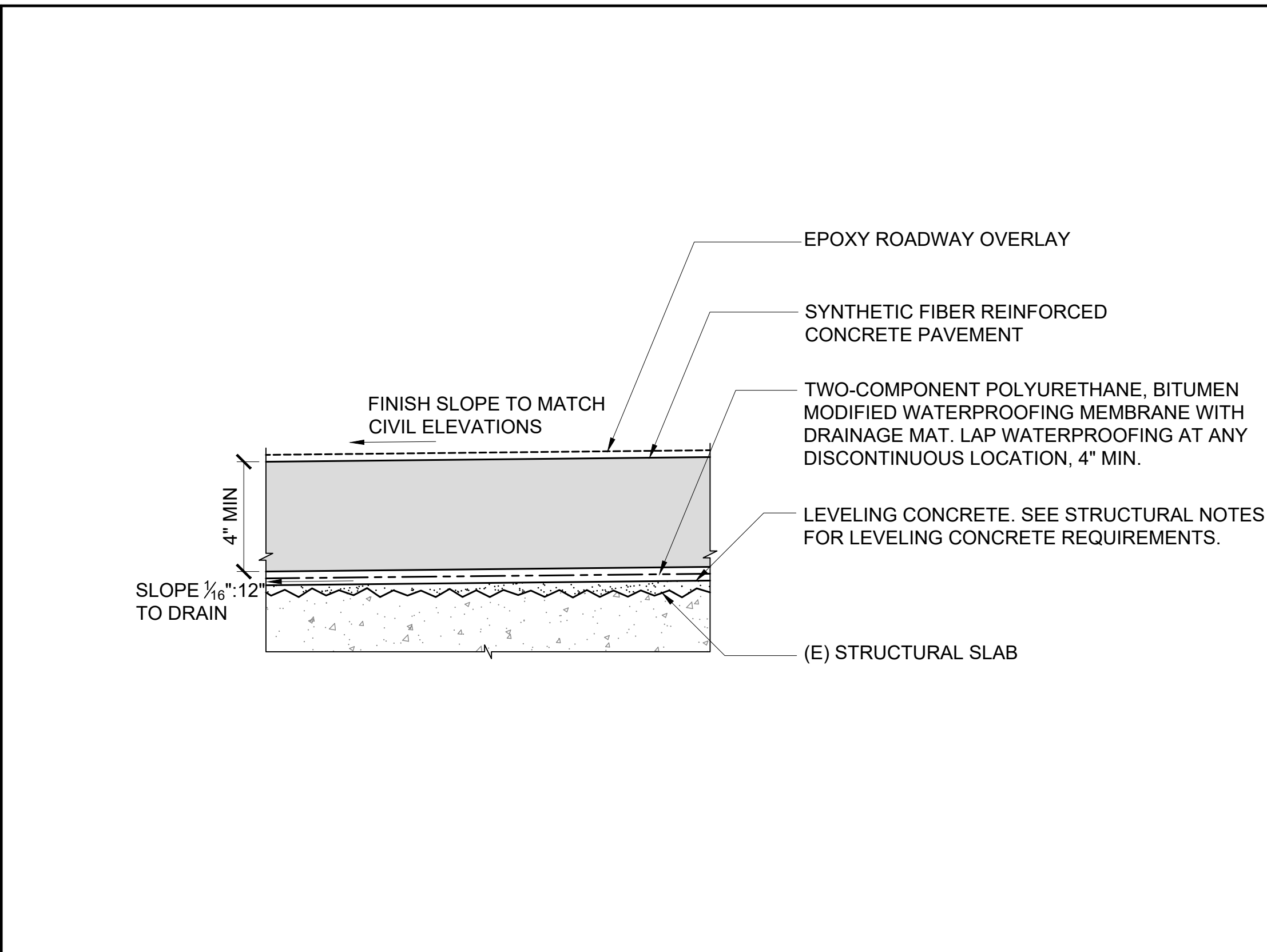
P:\S\151-520\15183 DOT Airports - 2nd and 3rd Level Roadway Improvements\004 Drawings\Structural\AutoCAD_format\2022-09-14 Phase 1 - Prebid Changes\0-07 S-400 Repair Details.dwg, 9/20/2022 12:19:03 PM, mgoo



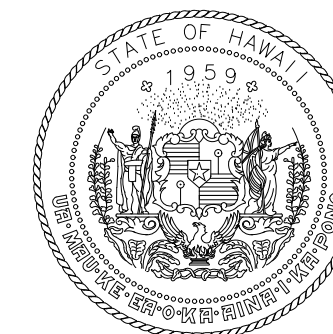
1 DH AND EWA SECOND LEVEL ROADWAY PHASE 3 & 4 REPAIR SECTION (NEAR TURN AROUND)
S-401 SCALE: 3/4" = 1'-0"



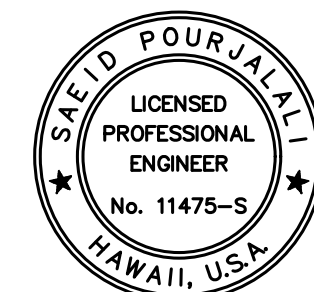
2 DETAIL
S-401 NOT TO SCALE



3 DETAIL
S-401 NOT TO SCALE



Airports Division
DEPARTMENT OF TRANSPORTATION
STATE OF HAWAII



Saif Pourjafari
04/30/2024
Licensed Expiration Date

This work was prepared by me or under my supervision

DSGN.	DRWN.	CHKD.	APPD.
MG	MG	SP	

KEY PLAN / NOTES:

NO.	DATE	REVISIONS
-----	------	-----------

CONSTRUCTION DOCUMENTS

SEPTEMBER, 2022
DATE

PROJECT TITLE :

EWA AND DH CONCOURSE
ROADWAY IMPROVEMENTS
PHASE 1

AT
DANIEL K. INOUE INTERNATIONAL AIRPORT
HONOLULU, OAHU, HAWAII

PROJECT NO.:

AO1043-32

SHEET TITLE:

PAVEMENT REPAIR DETAILS

DATE :
SEPTEMBER, 2022
SHEET :

DWG. NO.

S-401

31 OF 247 SHEETS