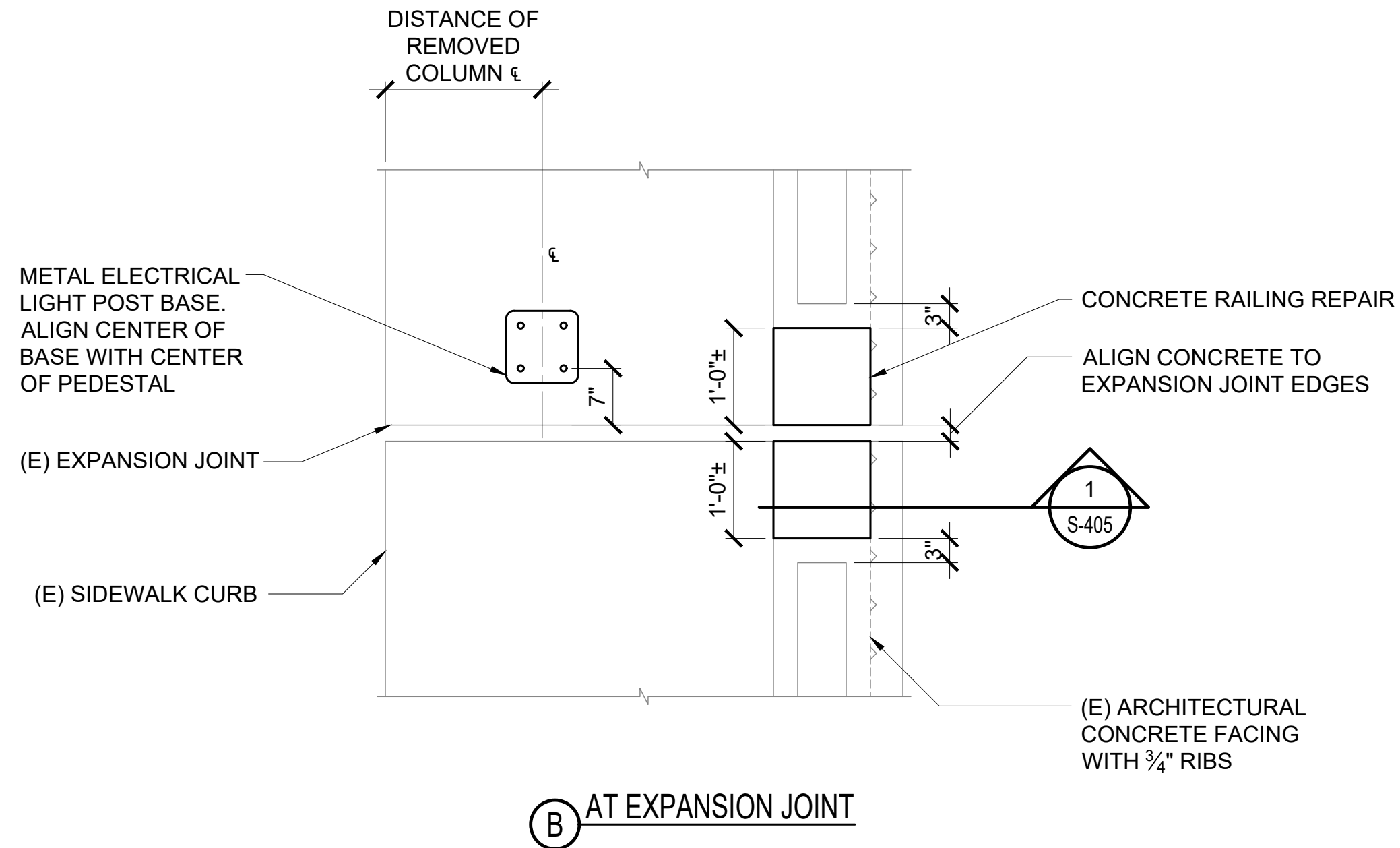
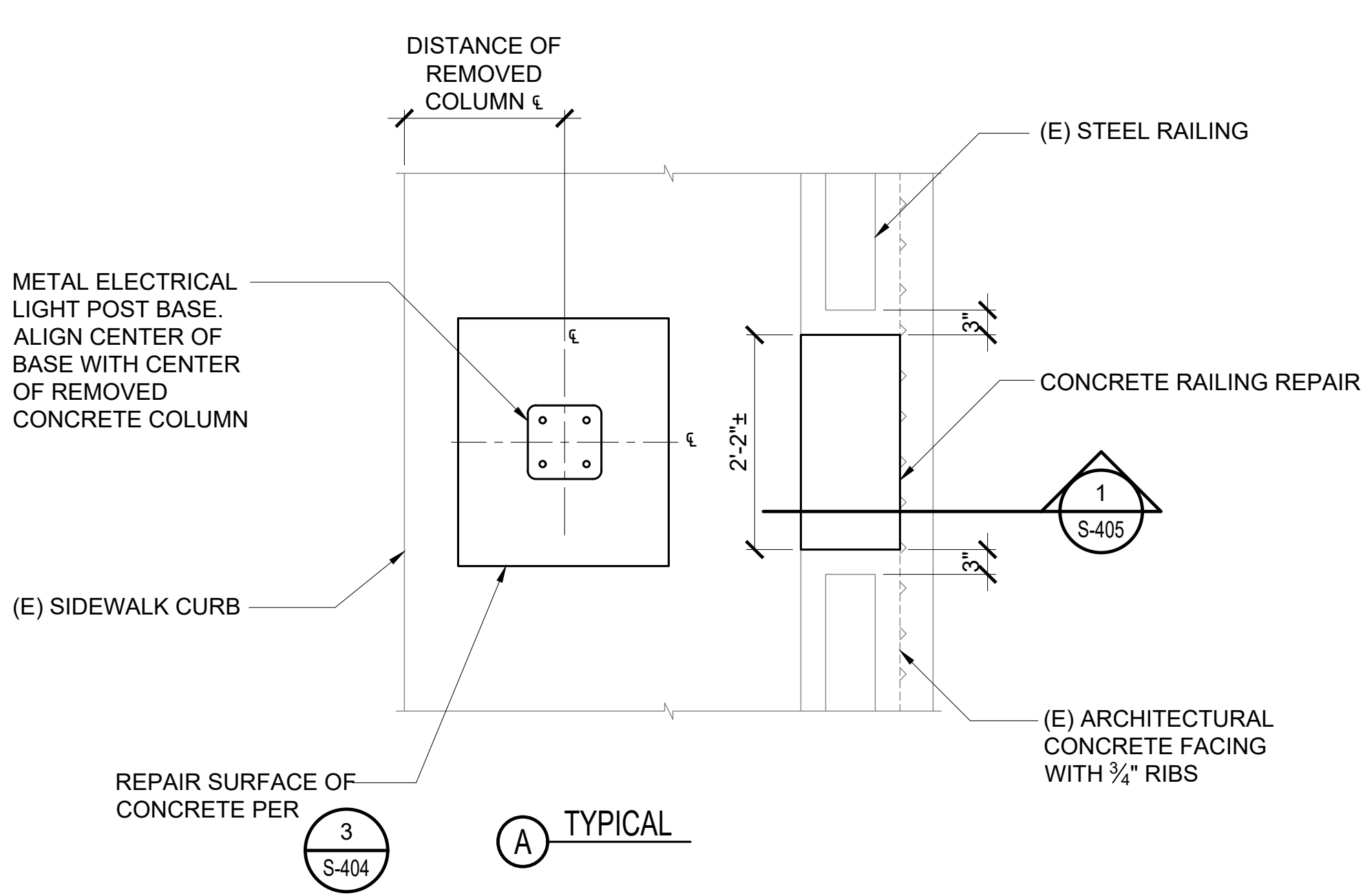
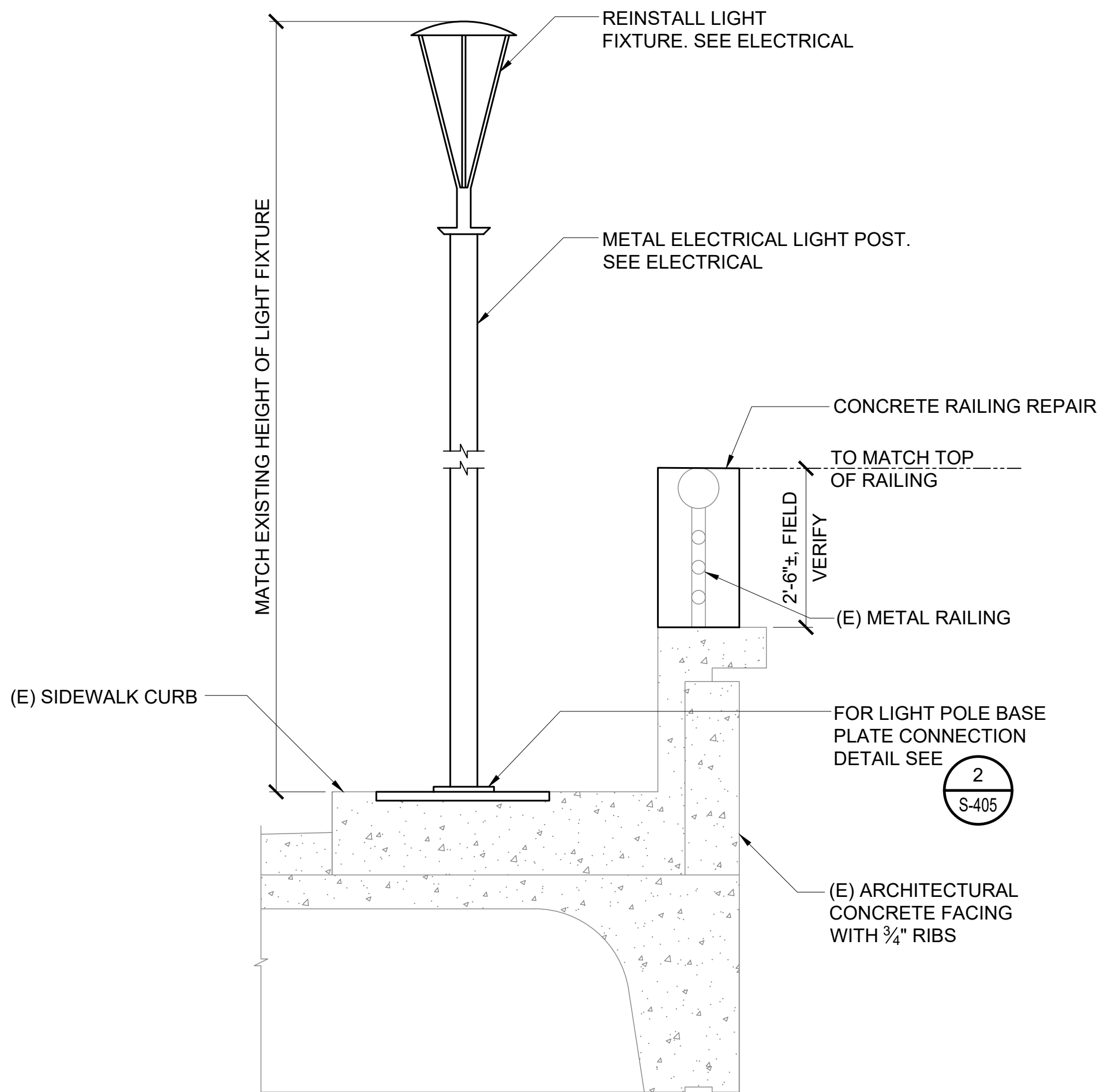


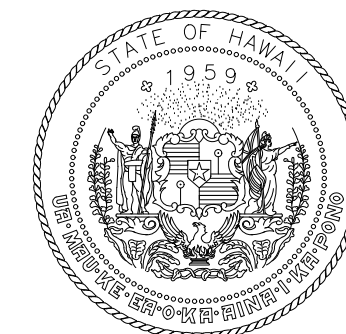
P:\S\151-520\183 DOT Airports - 2nd and 3rd Level Roadway Improvements\004 Drawings\Structural\AutoCAD\_format\2022-09-14 Phase 1 - Prebid Changes\0-07 S-400 Repair Details.dwg, 9/20/2022 12:19:05 PM, mgoo



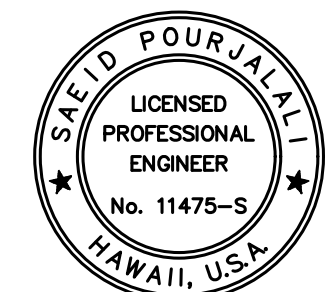
1  
S-404  
**LIGHT POLE PLAN**  
SCALE: 3/4" = 1'-0"



2  
S-404  
**LIGHT POLE ELEVATION**  
SCALE: 3/4" = 1'-0"



Airports Division  
DEPARTMENT OF TRANSPORTATION  
STATE OF HAWAII



*Saad Pourjafari*  
04/30/2024  
Licensed Expiration Date

This work was prepared by me or under my supervision

DSGN.	DRWN.	CHKD.	APPD.
MG	MG	SP	

### KEY PLAN / NOTES:

NO.	DATE	REVISIONS

### CONSTRUCTION DOCUMENTS

SEPTEMBER, 2022  
DATE

### PROJECT TITLE :

**EWA AND DH CONCOURSE  
ROADWAY IMPROVEMENTS  
PHASE 1**

AT  
DANIEL K. INOUE INTERNATIONAL AIRPORT  
HONOLULU, OAHU, HAWAII

### PROJECT NO.:

**A01043-32**

### SHEET TITLE:

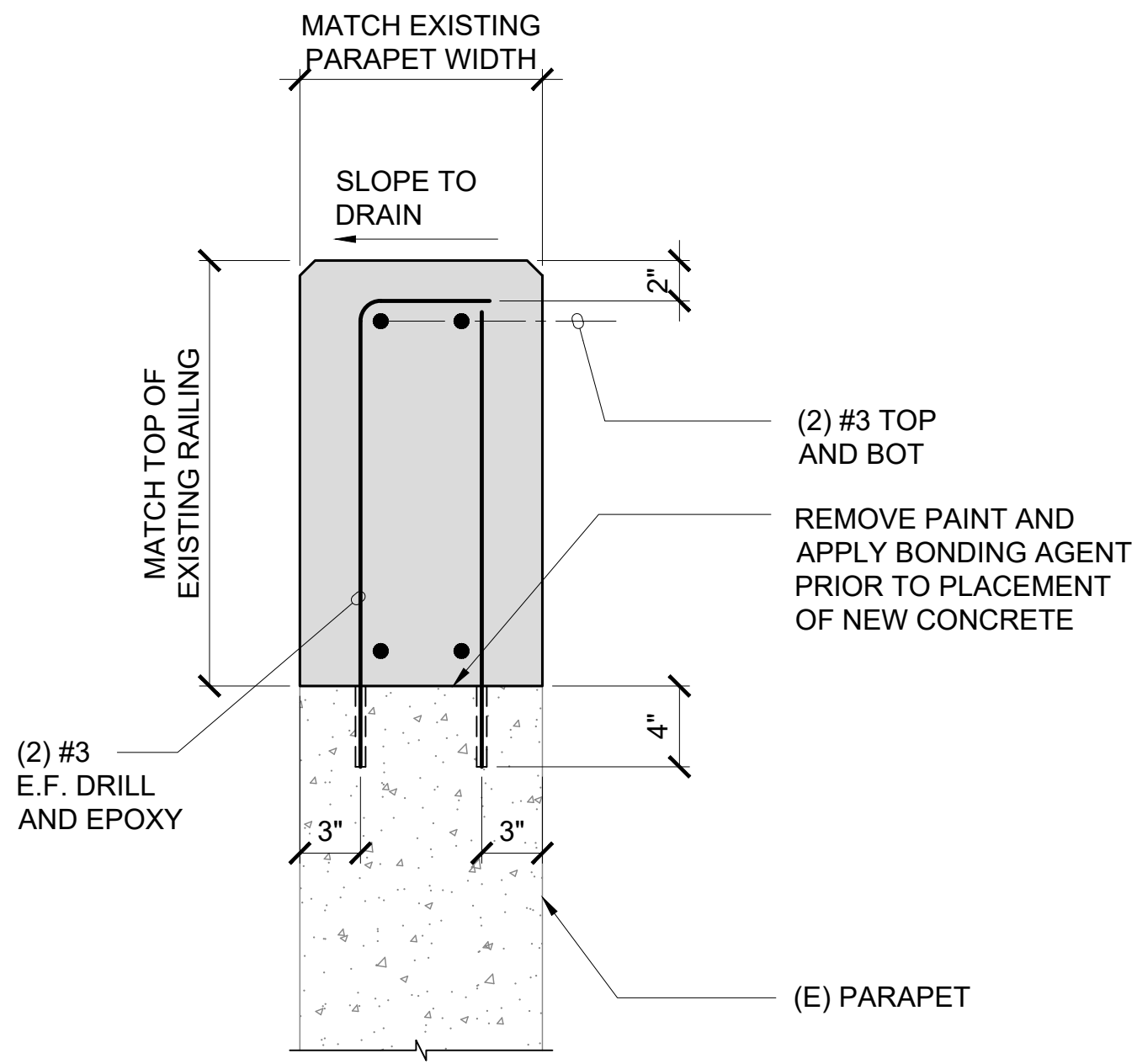
**LIGHT POLE REPAIR**

DATE :  
SEPTEMBER, 2022  
SHEET :

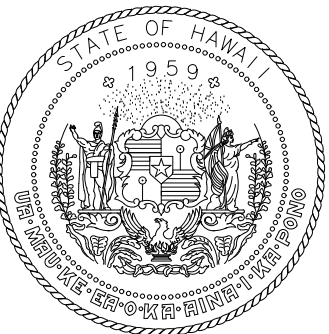
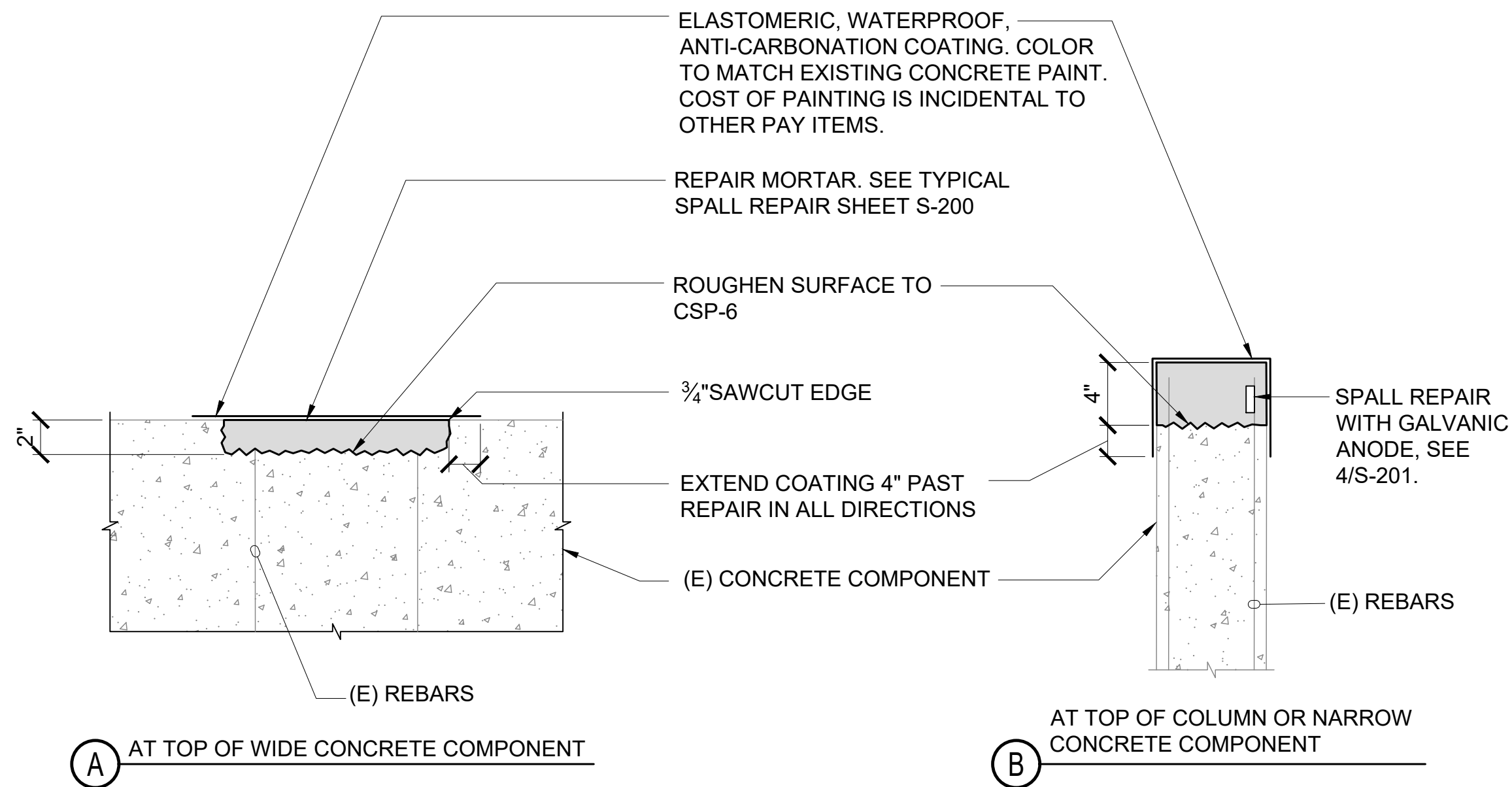
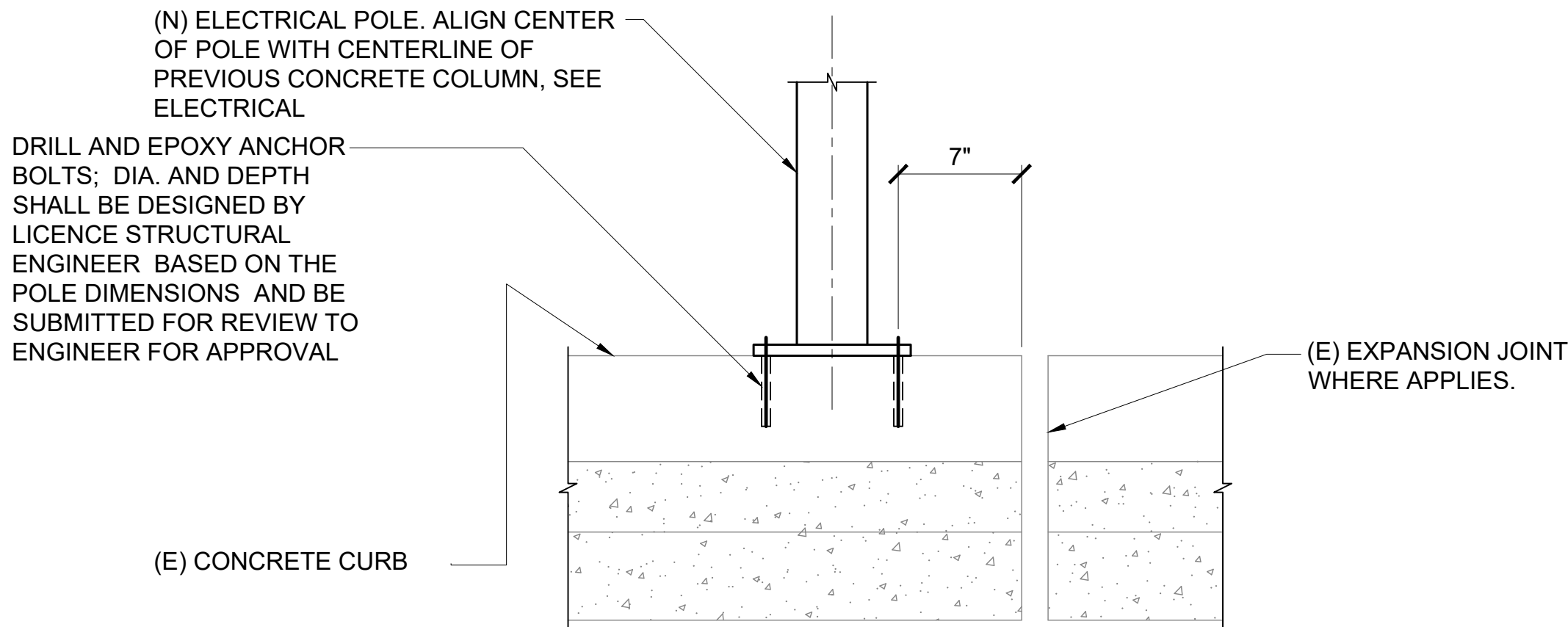
DWG. NO.

**S-404**

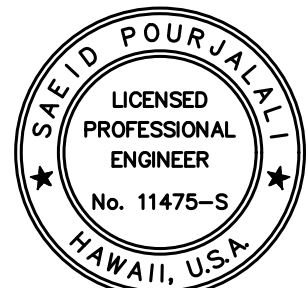
34 OF 247 SHEETS



NOTE:  
LEAVE 3" SPACE BETWEEN  
ADJACENT RAILING AND  
NEW CONCRETE ON EACH  
SIDE



Airports Division  
DEPARTMENT OF TRANSPORTATION  
STATE OF HAWAII



*Saif Pourjalali*  
04/30/2024

Licensed Expiration Date

This work was prepared by me or under my supervision

DSGN.	DRWN.	CHKD.	APPD.
MG	MG	SP	

### KEY PLAN / NOTES:

NO.	DATE	REVISIONS
-----	------	-----------

## CONSTRUCTION DOCUMENTS

SEPTEMBER, 2022  
DATE

### PROJECT TITLE :

**EWA AND DH CONCOURSE  
ROADWAY IMPROVEMENTS  
PHASE 1**

AT  
DANIEL K. INOUE INTERNATIONAL AIRPORT  
HONOLULU, OAHU, HAWAII

### PROJECT NO.:

**AO1043-32**

### SHEET TITLE:

**LIGHT POLE REPAIR**

DATE :

SEPTEMBER, 2022

SHEET :

35 OF 247 SHEETS

DWG. NO.

**S-405**

1  
S-405  
RAILING REPAIR DETAIL  
SCALE: 1 1/2" = 1'-0"

2  
S-405  
ELECTRICAL POLE BASE PLATE CONNECTION  
SCALE: 1 1/2" = 1'-0"

3  
S-405  
CUT EXISTING STEEL REINFORCEMENT FINISH  
NOT TO SCALE