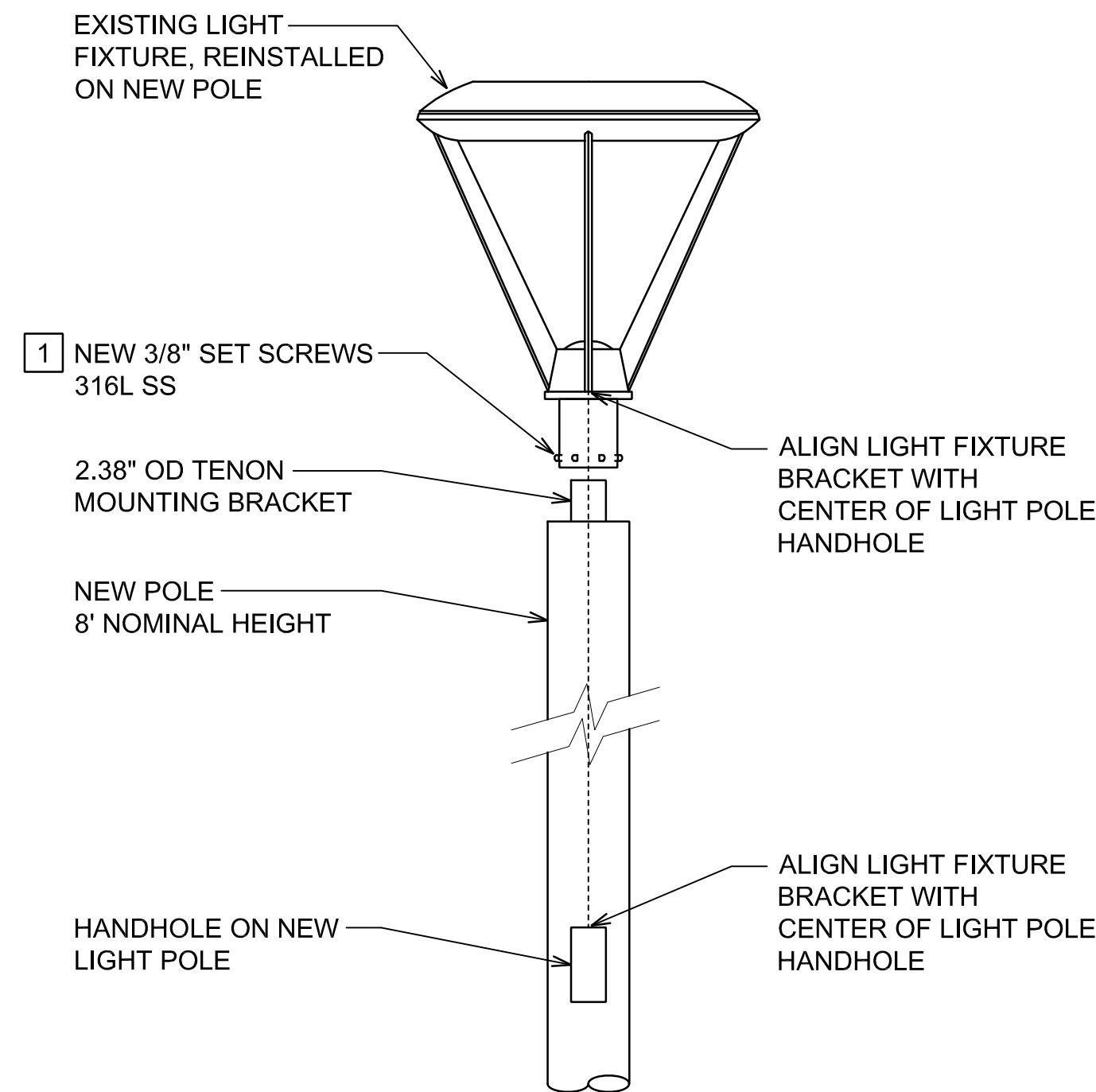


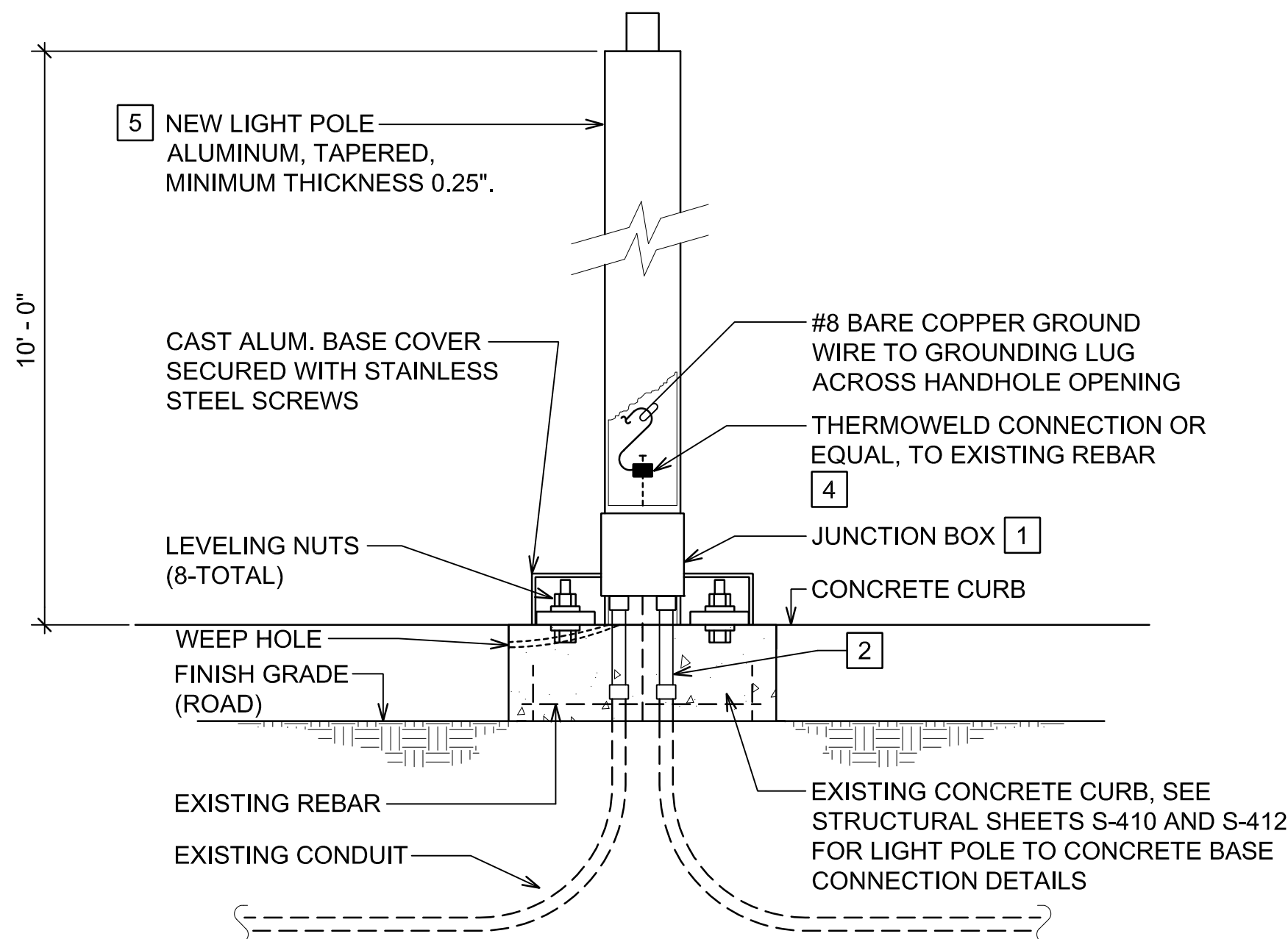
Z:\ACAD\PROJECTS\221023_DH_3RD_LEVEL\E-D-319_221023_LTG_MOUNTING_DETAILS 9/8/2022 2:00PM MPetner



NOTE(S):

- 1 TIGHTEN SET SCREWS IN STAR PATTERN.

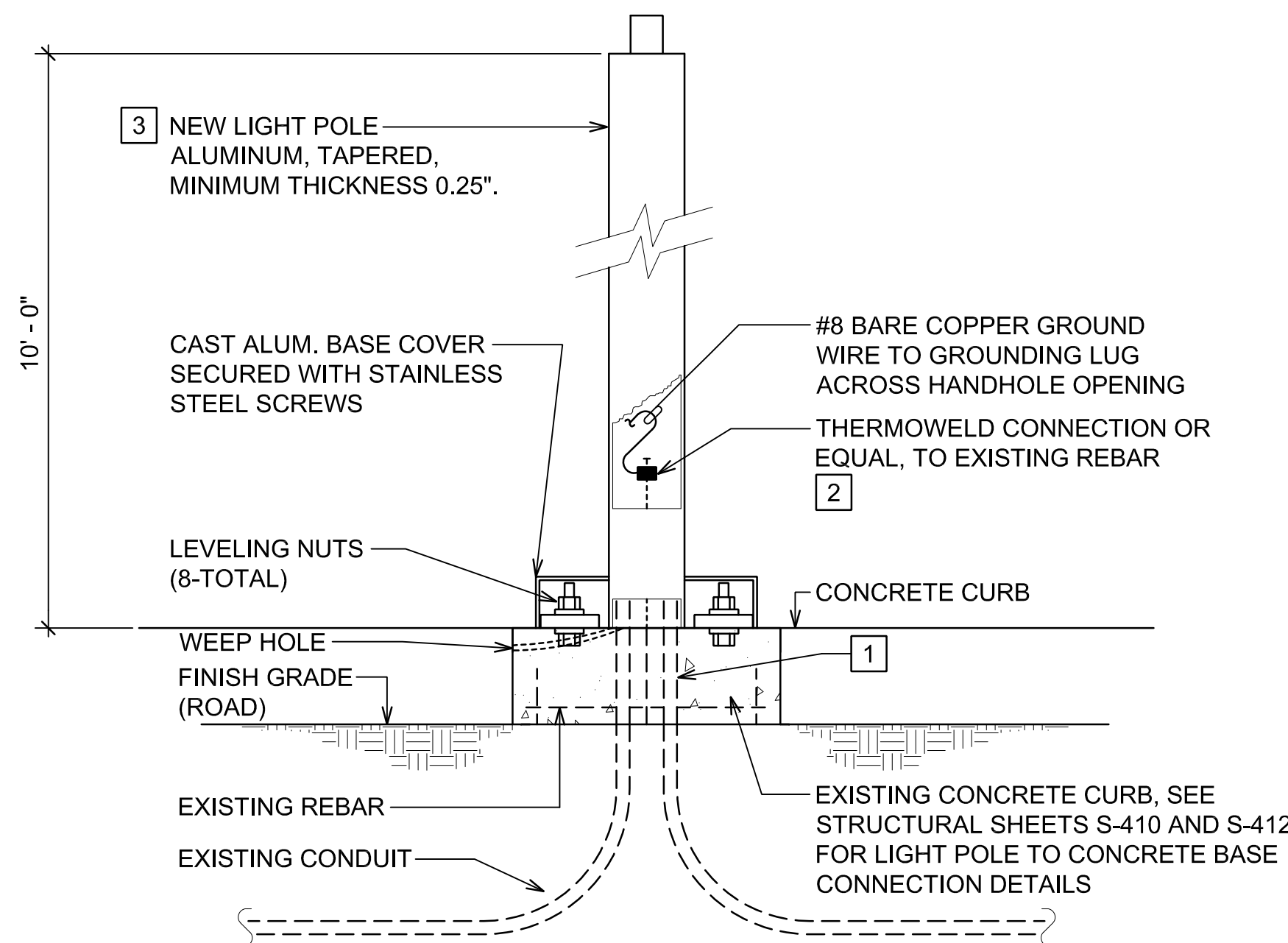
1 LIGHT FIXTURE MOUNTING DETAIL
E-D-319 NOT TO SCALE



NOTE(S):

- 1 JUNCTION BOX, 6"SQ X 4"D, NEMA 4X, 316SS. ALL CONDUCTOR SPLICES TO BE IN JUNCTION BOX. ALL PENETRATIONS INTO JB TO BE WEATHERPROOF, ENSURE BOX MAINTAINS NEMA 4X RATING.
- 2 TRANSITION COUPLING FROM EXISTING CONDUIT TO NEW JUNCTION BOX, WEATHERPROOF CONNECTIONS. TO INSTALL TRANSITION COUPLING, CHIP AWAY EXISTING CONCRETE TO EXPOSE 4" OF EXISTING CONDUIT. TRANSITION COUPLING TO FINISH 4" ABOVE HEIGHT OF CONCRETE BASE. COORDINATE WORK WITH OTHER DISCIPLINES PRIOR TO DEMOLITION TO INTERCEPT AND PROTECT EXISTING CONDUIT AND CONDUCTORS. ALL CONDUCTOR SPLICES SHALL BE WEATHERPROOF.
- 3 RIGHT ANGLE SUPPORT BRACKET, 316SS. MADE OF RECTANGLE STEEL 1/4" THICK X 1"W. BRACKET 10"H X 6"L. SECURE TO CONCRETE BASE WITH 4-(3/8" X 4" CONCRETE ANCHORS). 2 SUPPORT BRACKETS PER JB.
- 4 COORDINATE WITH OTHER DISCIPLINES PRIOR TO DEMOLITION TO EXPOSE EXISTING REBAR WITHIN EXISTING CONCRETE CURB.
- 5 ALUMINUM POLE, 10'-0" NOMINAL HEIGHT, SHALL BE SPUN TAPERED FROM SEAMLESS ALUMINUM TUBING, ALLOY 6063-T6, CONFORMING TO ASTM B 221. MODEL: VALMONT R 090830404T4P2312 OR APPROVED EQUAL.
6. FIELD VERIFY LOCATION OF CONDUIT PENETRATION AFTER COLUMN DEMOLITION. IF CONDUIT PENETRATION IS NOT CENTERED WITH THE PREEXISTING COLUMN, NOTIFY ENGINEER.

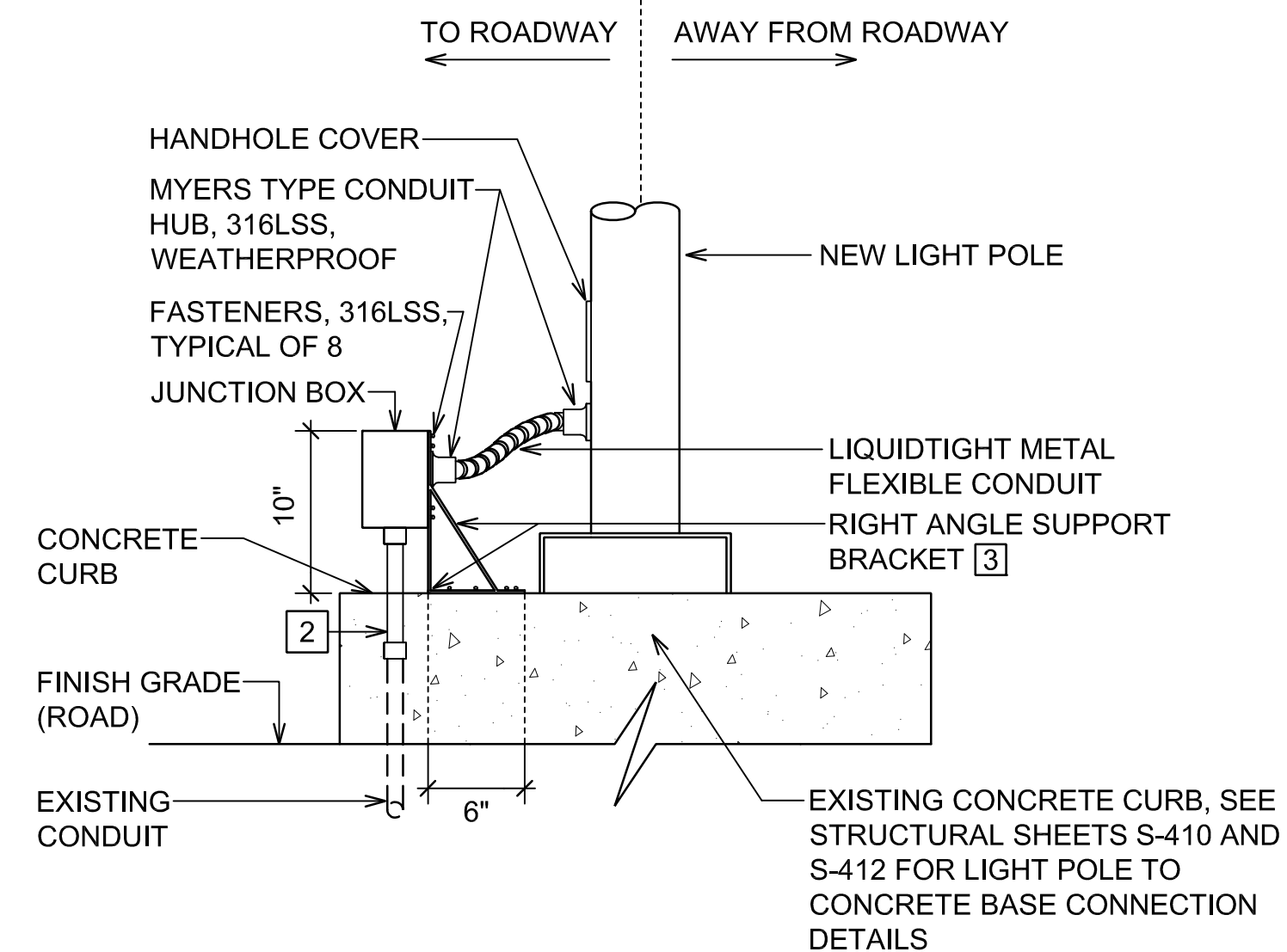
2 LIGHT POLE DETAIL - EXISTING CONDUITS EXTENDED TO NEW POLE LOCATION
E-D-319 NOT TO SCALE



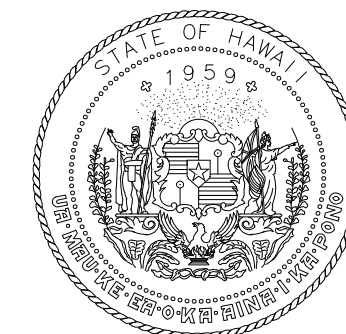
NOTE(S):

- 1 EXISTING CONDUIT TO TERMINATE INSIDE NEW POLE. RETAIN MINIMUM 4" HEIGHT OF EXISTING CONDUIT ABOVE CONCRETE CURB GRADE. ALL SPLICES SHALL BE WEATHERPROOF. COORDINATE WITH OTHER DISCIPLINES PRIOR TO DEMOLITION TO INTERCEPT AND PROTECT EXISTING CONDUIT AND CONDUCTORS.
- 2 COORDINATE WITH OTHER DISCIPLINES PRIOR TO DEMOLITION TO EXPOSE EXISTING REBAR WITHIN EXISTING CONCRETE CURB.
- 3 ALUMINUM POLE, 10'-0" NOMINAL HEIGHT, SHALL BE SPUN TAPERED FROM SEAMLESS ALUMINUM TUBING, ALLOY 6063-T6, CONFORMING TO ASTM B 221. MODEL: VALMONT R 090830404T4P2312 OR APPROVED EQUAL.
4. FIELD VERIFY LOCATION OF CONDUIT PENETRATION AFTER COLUMN DEMOLITION. IF CONDUIT PENETRATION IS NOT CENTERED WITH THE PREEXISTING COLUMN, NOTIFY ENGINEER.

3 LIGHT POLE DETAIL - NEW POLE MOUNTED OVER EXISTING CONDUITS
E-D-319 NOT TO SCALE

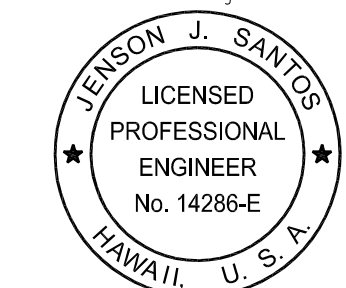


SIDE VIEW



Airports Division
DEPARTMENT OF TRANSPORTATION
STATE OF HAWAII

RONALD N. S. HO & ASSOC., INC.
Electrical Engineers



THIS WORK WAS PREPARED BY
ME OR UNDER MY SUPERVISION
EXPIRATION DATE OF THE LICENSE:
2024.04.30

DSGN.	DRWN.	CHKD.	APPD.
MP	CAD	JS	JS

KEY PLAN / NOTES:

NO.	DATE	REVISIONS

CONSTRUCTION DOCUMENTS

SEPTEMBER, 2022
DATE

PROJECT TITLE :

**EWA AND DH CONCOURSE
ROADWAY IMPROVEMENTS
PHASE 1**

AT
DANIEL K. INOUE INTERNATIONAL AIRPORT
HONOLULU, OAHU, HAWAII

PROJECT NO.:

AO1043-32

SHEET TITLE:

LIGHT FIXTURE MOUNTING DETAILS

DATE :	DWG. NO. E-D-319
SEPTEMBER, 2022	
SHEET :	
247 OF 247 SHEETS	