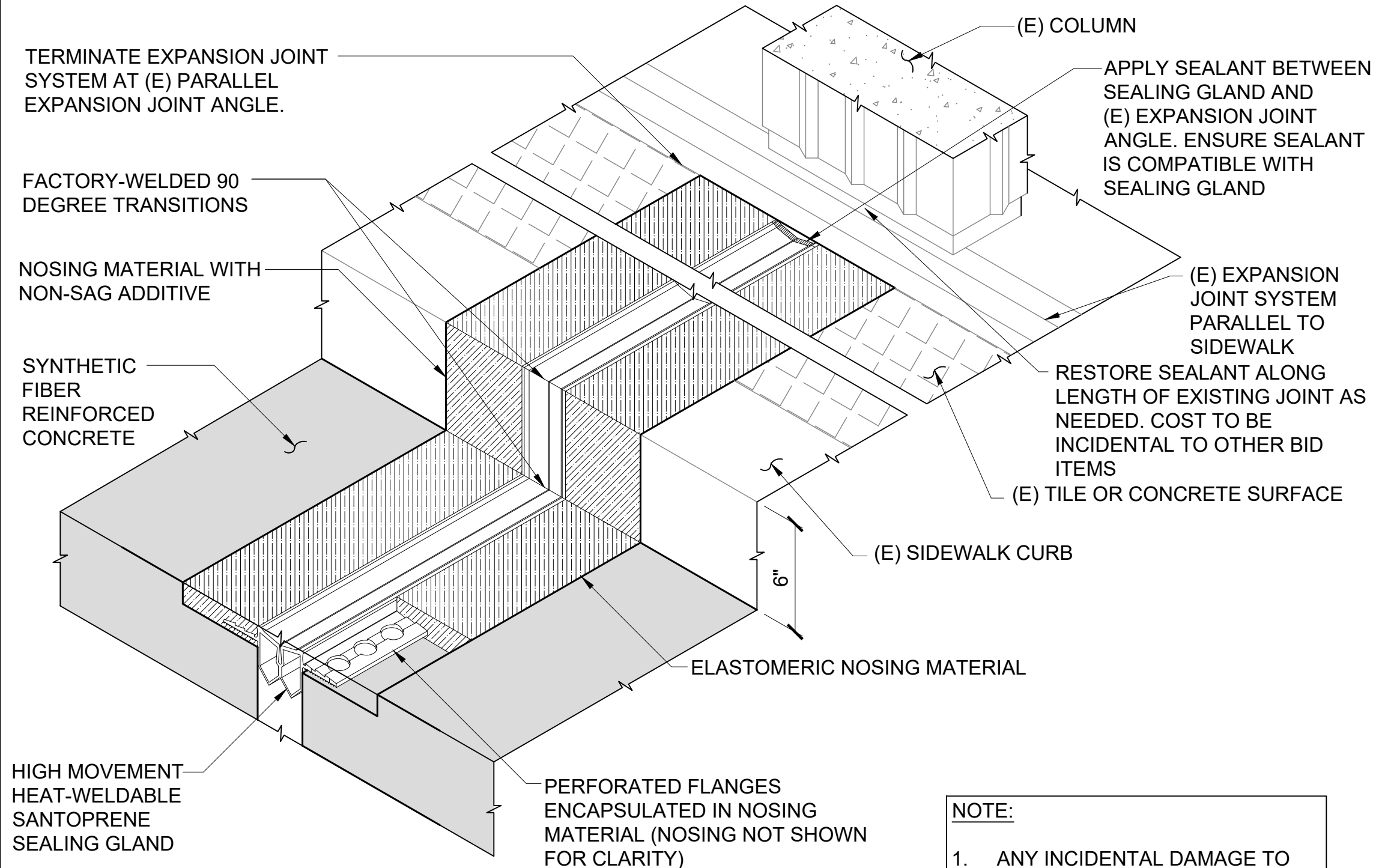
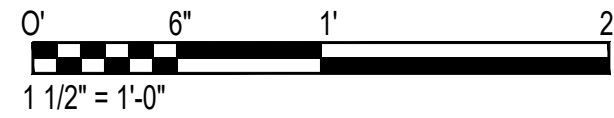
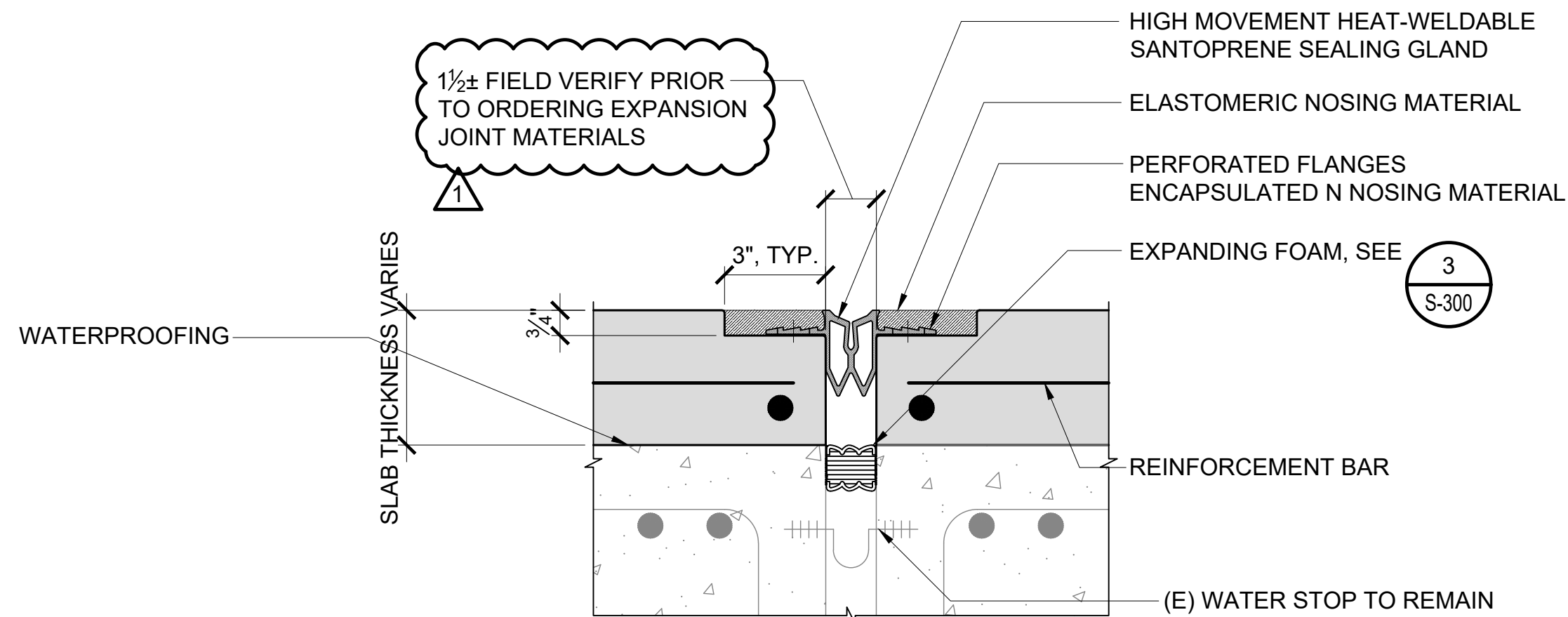


1 EXPANSION JOINT REPAIR DETAIL AT 2ND LEVEL ROADWAY
S-300 SCALE: 1 1/2" = 1'-0"

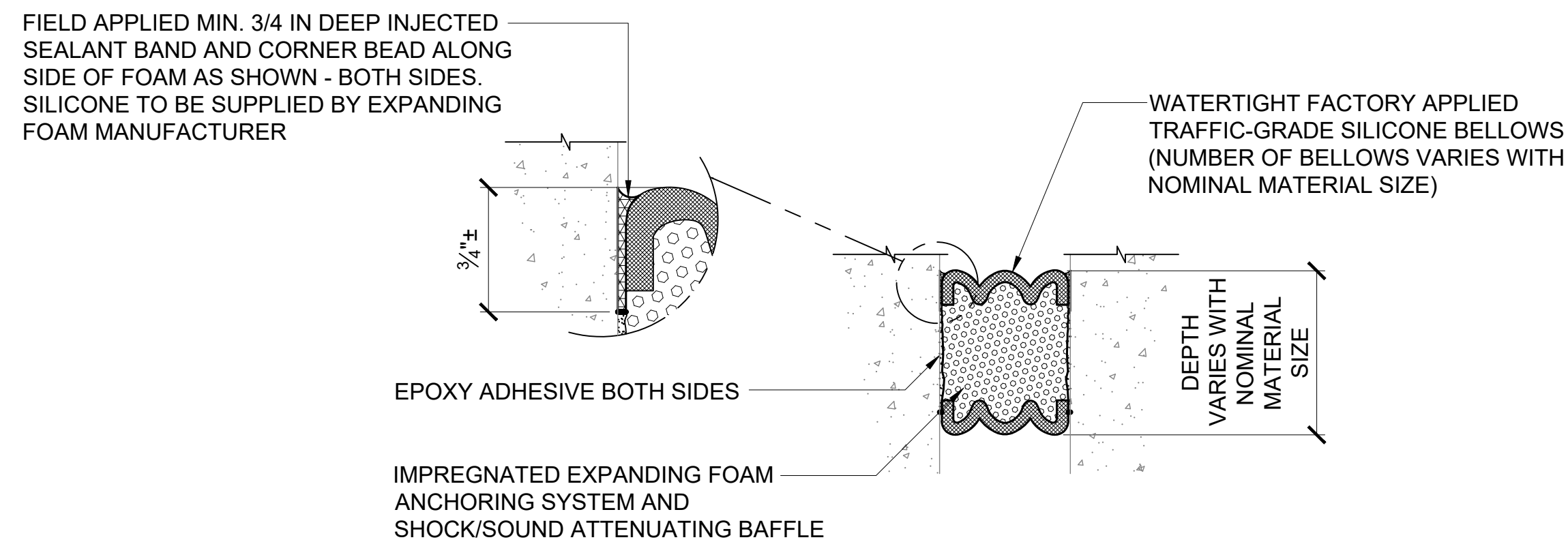
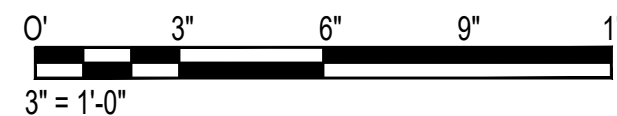


4 CURB TRANSITION DETAIL
S-300 NOT TO SCALE

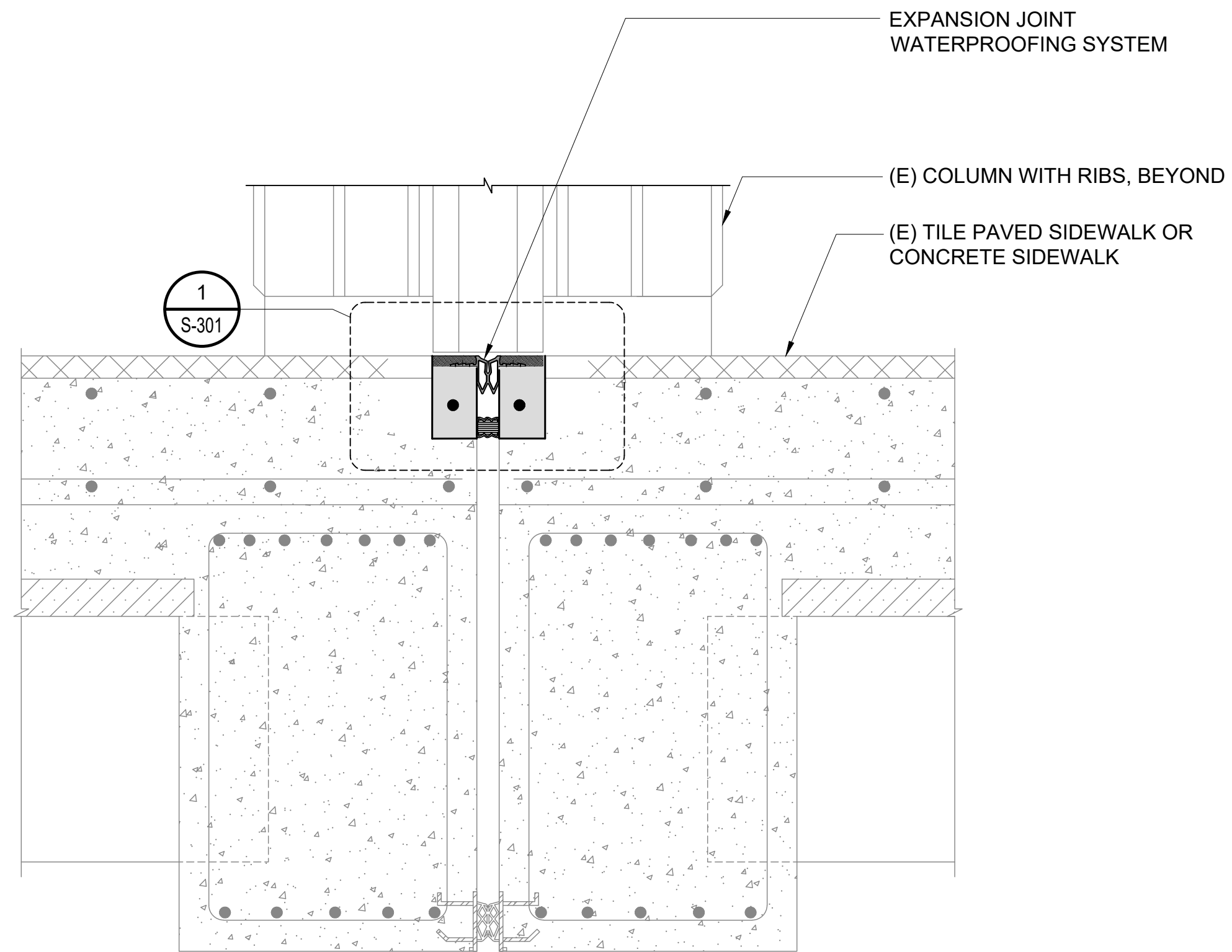
NOTE:
1. ANY INCIDENTAL DAMAGE TO THE SIDEWALK CURB AND TILES SHALL BE REPAIRED AT THE CONTRACTOR'S EXPENSE.



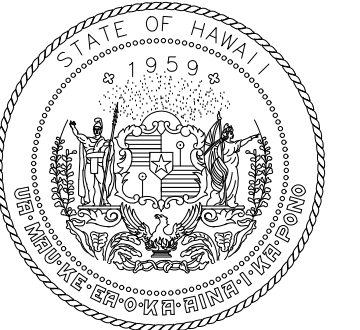
2 DETAIL
S-300 SCALE: 3" = 1'-0"



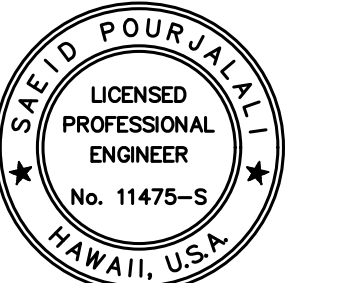
3 EXPANDING FOAM DETAIL
S-300 NOT TO SCALE



5 EXPANSION JOINT REPAIR DETAIL AT SIDEWALK
S-300 SCALE: 1 1/2" = 1'-0"



Airports Division
DEPARTMENT OF TRANSPORTATION
STATE OF HAWAII



Saif Pourjalebi
04/30/2024

Licensed Expiration Date

This work was prepared by me or under my supervision

DSGN.	DRWN.	CHKD.	APPD.
MG	MG	SP	

KEY PLAN / NOTES:

NO.	DATE	REVISIONS
1	10/20/22	ADDENDUM 1

CONSTRUCTION DOCUMENTS

SEPTEMBER, 2022
DATE

PROJECT TITLE :

EWA AND DH CONCOURSE
ROADWAY IMPROVEMENTS
PHASE 1

AT
DANIEL K. INOUE INTERNATIONAL AIRPORT
HONOLULU, OAHU, HAWAII

PROJECT NO.:

AO1043-32

SHEET TITLE:

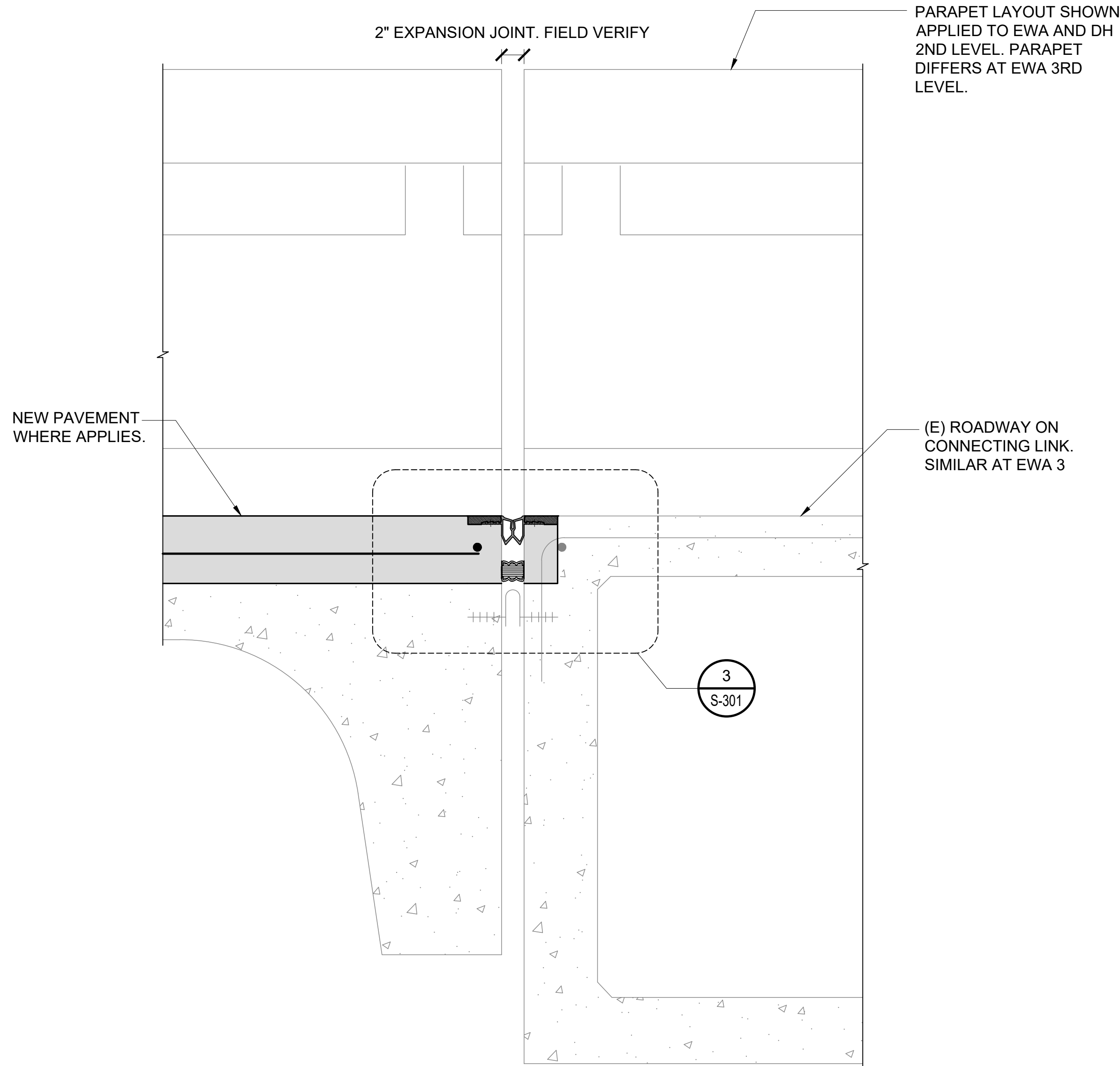
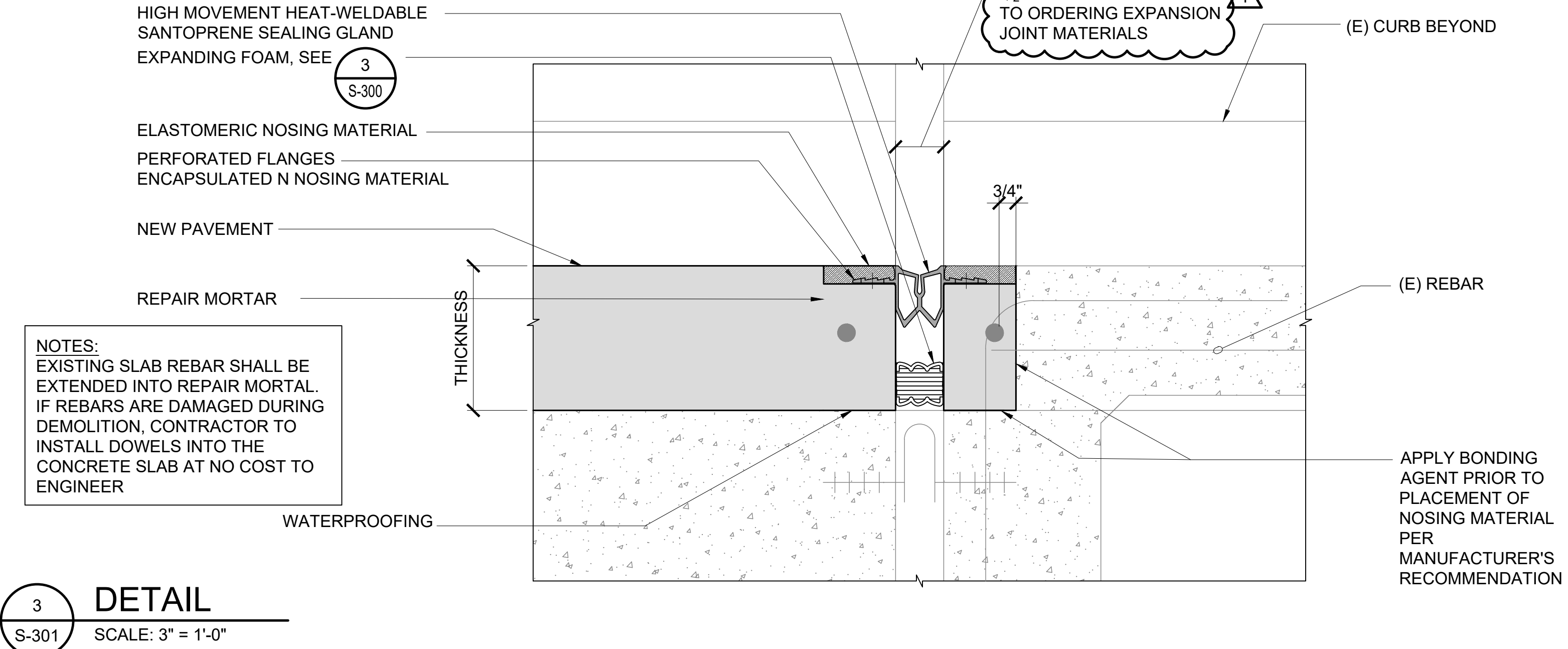
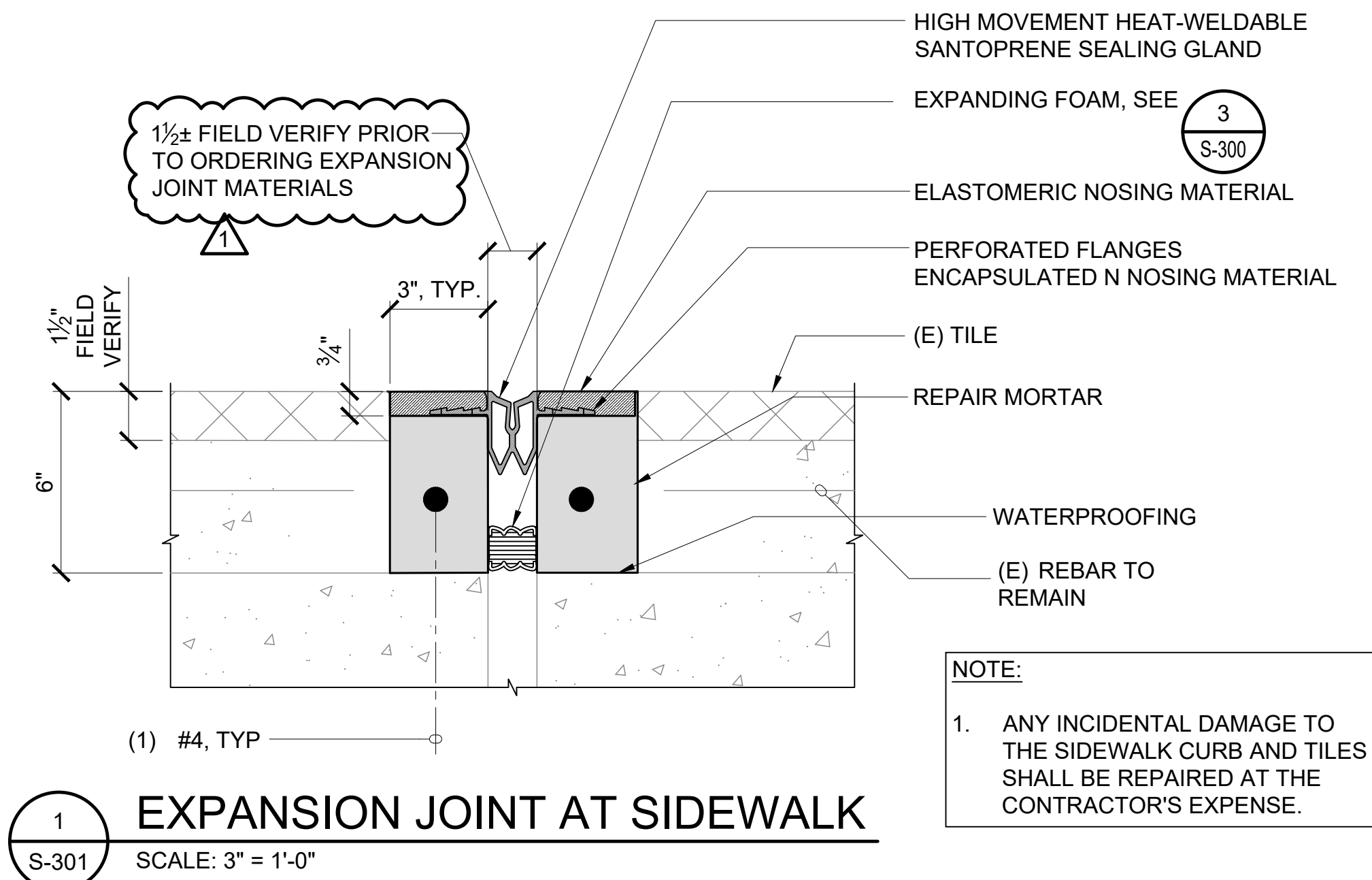
EXPANSION JOINT REPAIR DETAILS

DATE :
SEPTEMBER, 2022
SHEET :

DWG. NO.

S-300

26 OF 247 SHEETS

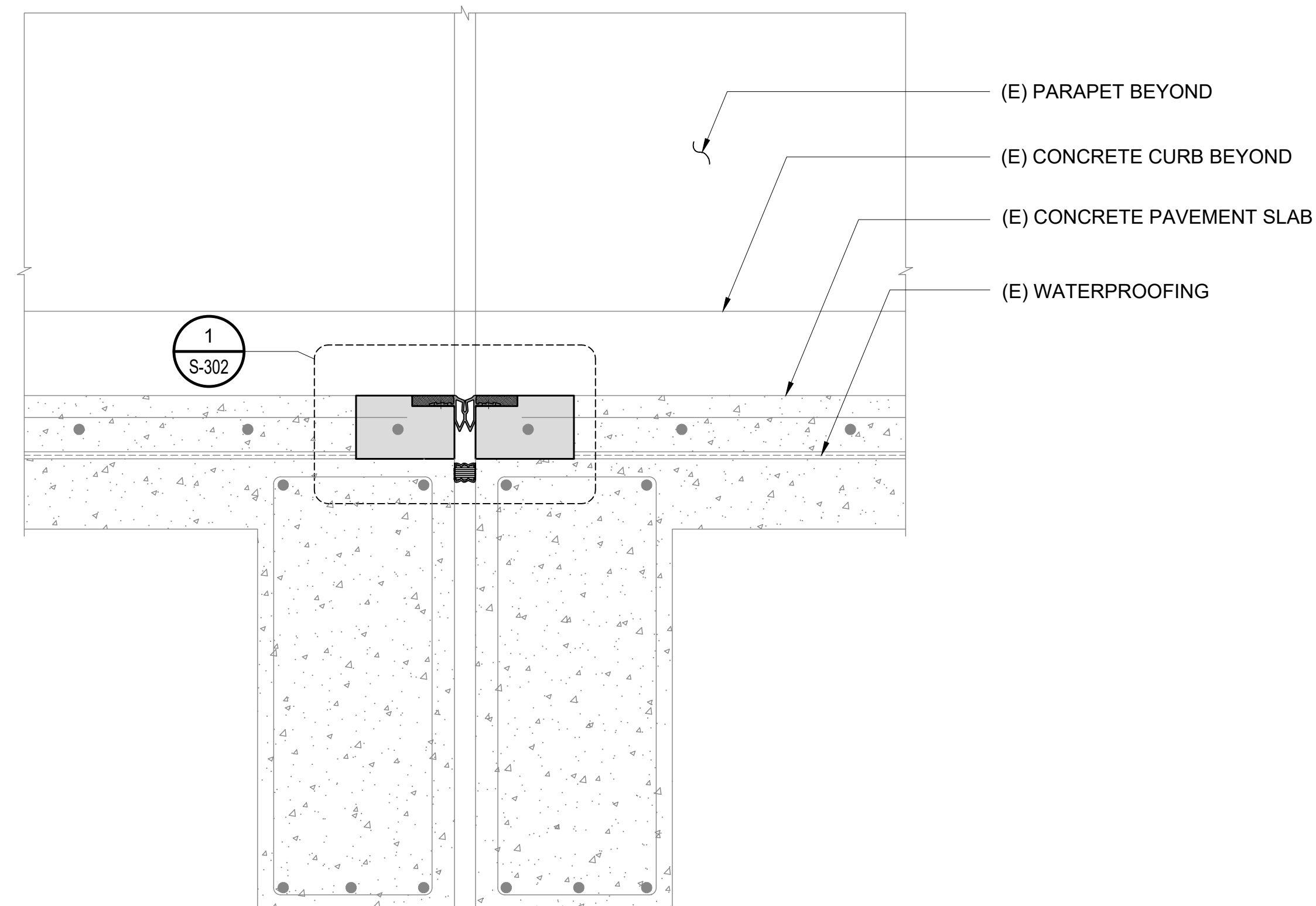


2

S-301

EXPANSION JOINT REPAIR DETAIL AT EWA CONNECTING LINK JOINT (MIRRORED AT DH)

SCALE: 1 1/2" = 1'-0"

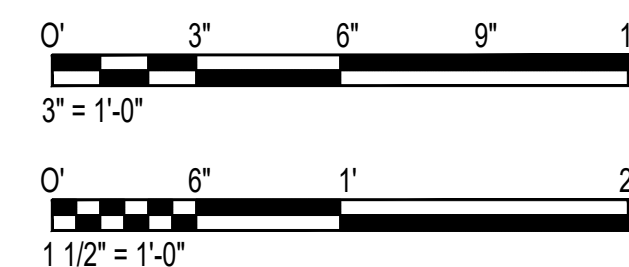


4

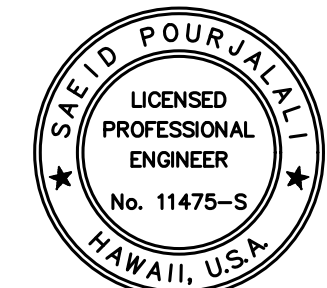
S-301

EXPANSION JOINT REPAIR DETAIL AT EWA 3RD LEVEL ROADWAY

SCALE: 1 1/2" = 1'-0"



Airports Division
DEPARTMENT OF TRANSPORTATION
STATE OF HAWAII



Saad Pourjafari
04/30/2024
Licensed Expiration Date

This work was prepared by me or under my supervision			
DSGN.	DRWN.	CHKD.	APPD.
MG	MG	SP	

KEY PLAN / NOTES:

10/20/22	ADDENDUM 1
NO.	DATE
REVISIONS	

CONSTRUCTION DOCUMENTS

SEPTEMBER, 2022
DATE

PROJECT TITLE :

EWA AND DH CONCOURSE
ROADWAY IMPROVEMENTS
PHASE 1

AT
DANIEL K. INOUE INTERNATIONAL AIRPORT
HONOLULU, OAHU, HAWAII

PROJECT NO.:

AO1043-32

SHEET TITLE:

EXPANSION JOINT
REPAIR DETAILS

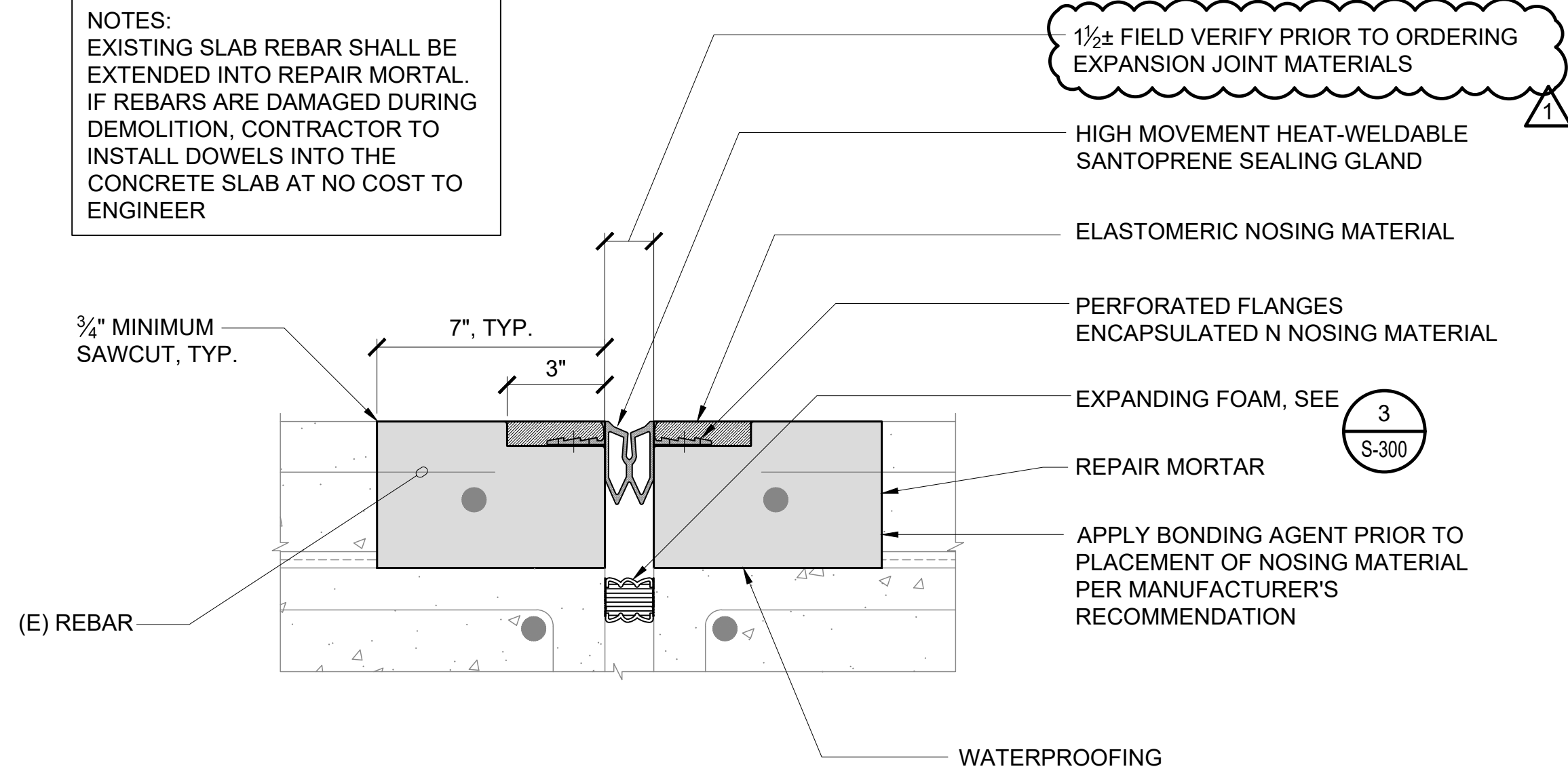
DATE :
SEPTEMBER, 2022
SHEET :

DWG. NO.

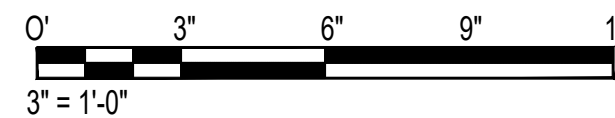
S-301

27 OF 247 SHEETS

NOTES:
EXISTING SLAB REBAR SHALL BE
EXTENDED INTO REPAIR MORTAL.
IF REBARS ARE DAMAGED DURING
DEMOLITION, CONTRACTOR TO
INSTALL DOWELS INTO THE
CONCRETE SLAB AT NO COST TO
ENGINEER



1 DETAIL
S-302 SCALE: 3" = 1'-0"

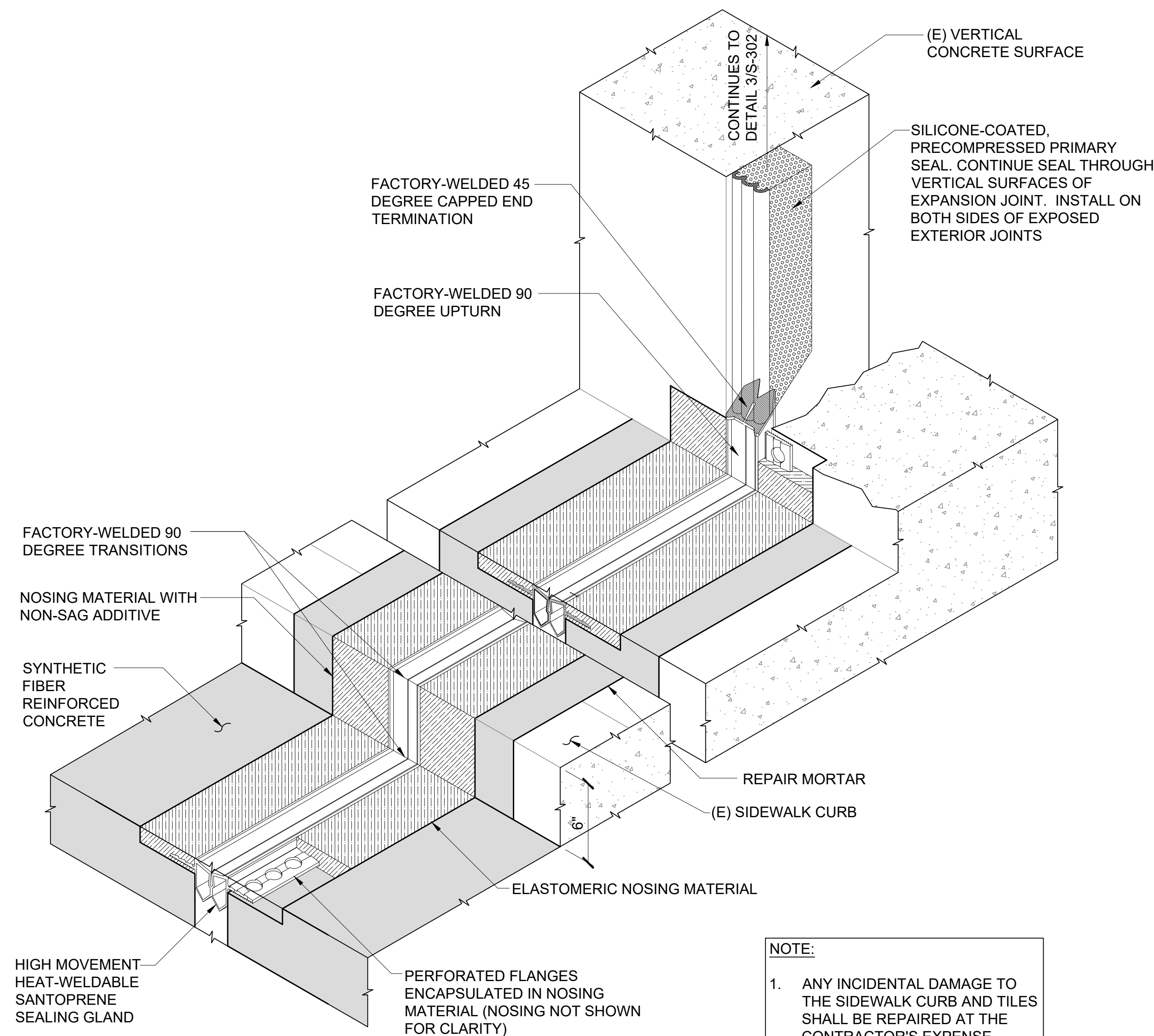
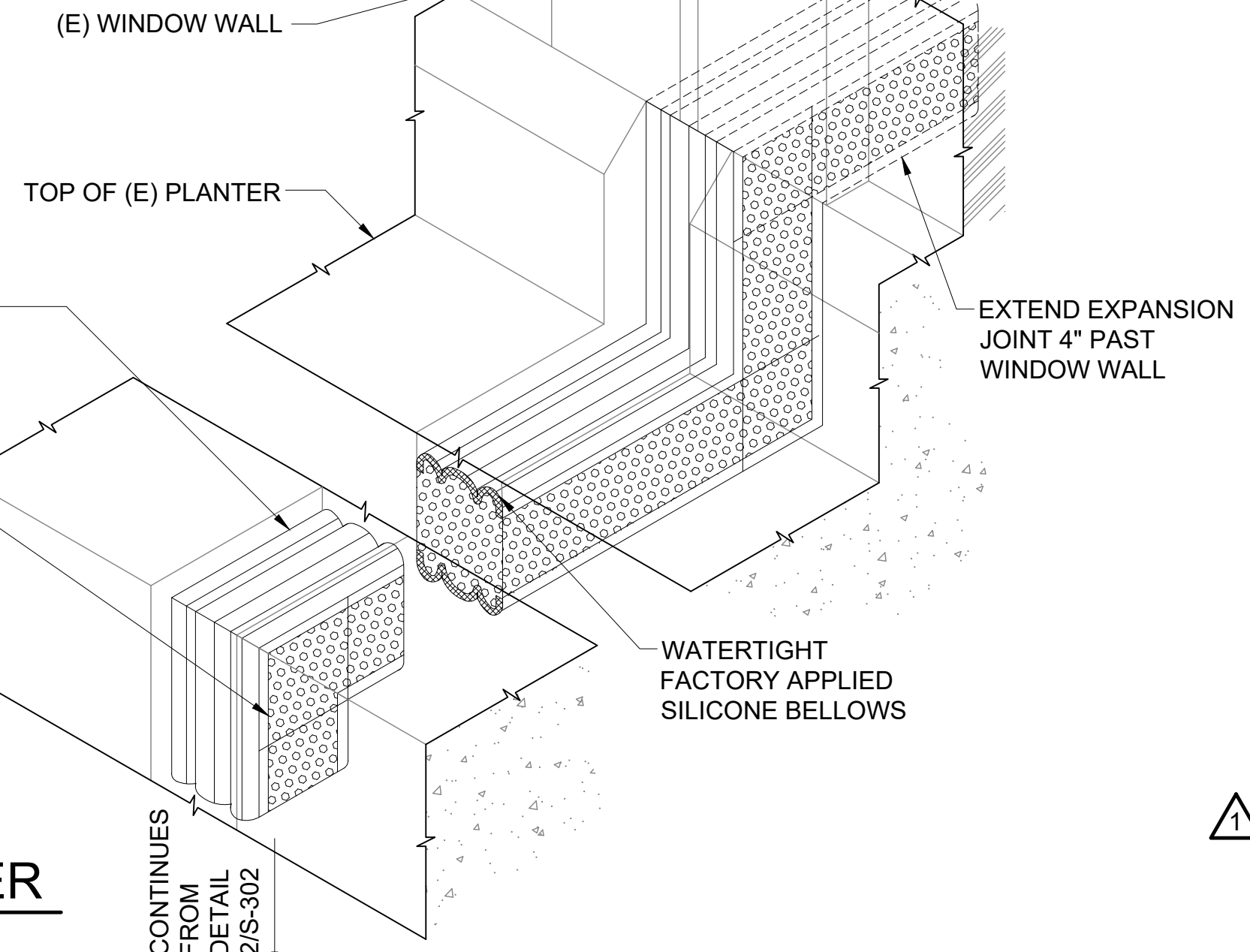


FACTORY BENT SILICONE-COATED,
PRECOMPRESSED PRIMARY SEAL 90°
PREFABRICATED ANGLE, TYP.

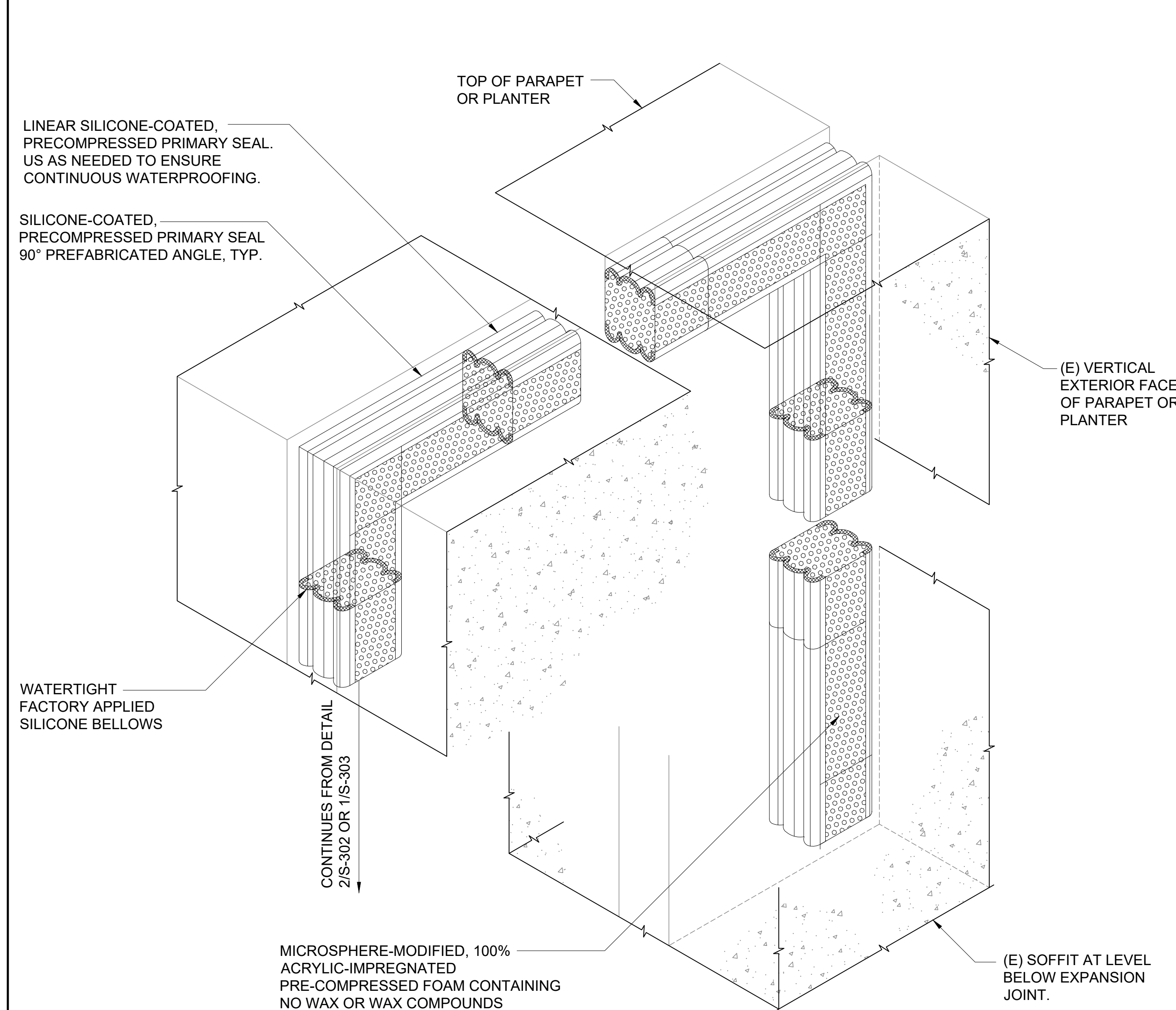
MICROSPHERE-MODIFIED, 100%
ACRYLIC-IMPREGNATED
PRE-COMPRESSED FOAM CONTAINING
NO WAX OR WAX COMPOUNDS

EXPANSION JOINT AT
EWA 3RD LEVEL PLANTER

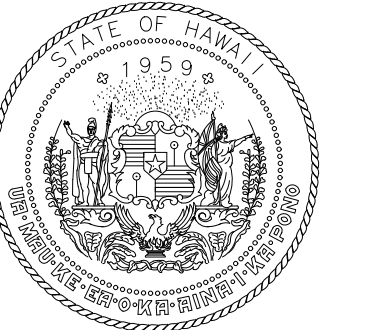
4
S-302 SCALE: 3/4" = 1'-0"



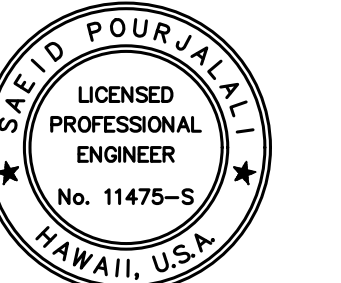
2 CURB TRANSITION DETAIL NEAR PLANTERS
S-302 NOT TO SCALE



3 EXPANSION JOINT WATERPROOFING AT PARAPET AND PLANTERS
S-302 NOT TO SCALE



Airports Division
DEPARTMENT OF TRANSPORTATION
STATE OF HAWAII



Saad Pourfalahi
04/30/2024
Licensed Expiration Date

This work was prepared by me or under my supervision

DSGN.	DRWN.	CHKD.	APPD.
MG	MG	SP	

KEY PLAN / NOTES:

NO.	DATE	REVISIONS
1	10/20/22	ADDENDUM 1

CONSTRUCTION
DOCUMENTS

SEPTEMBER, 2022
DATE

PROJECT TITLE :
EWA AND DH CONCOURSE
ROADWAY IMPROVEMENTS
PHASE 1

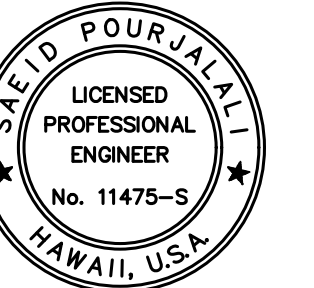
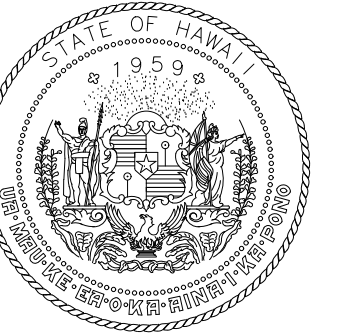
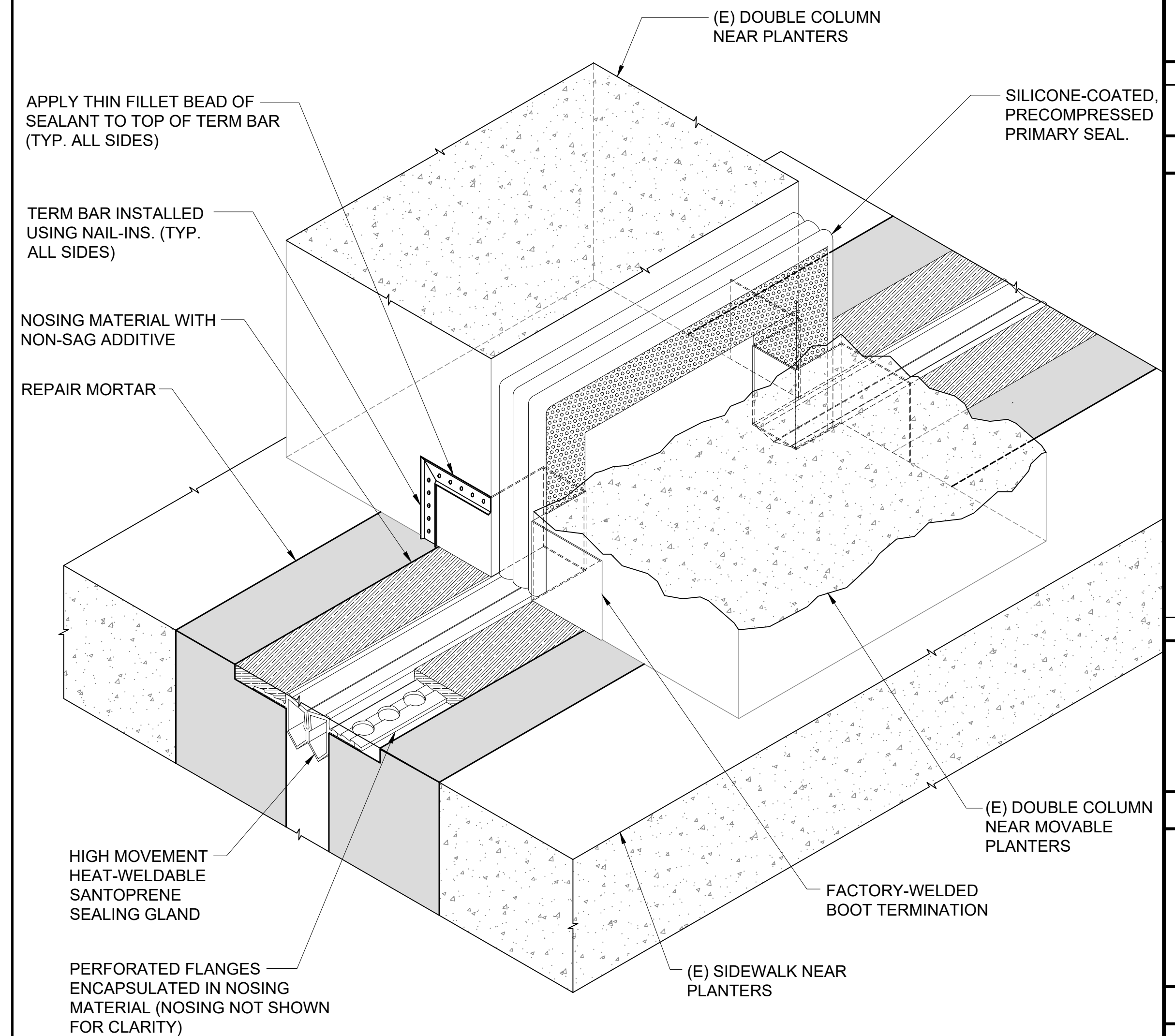
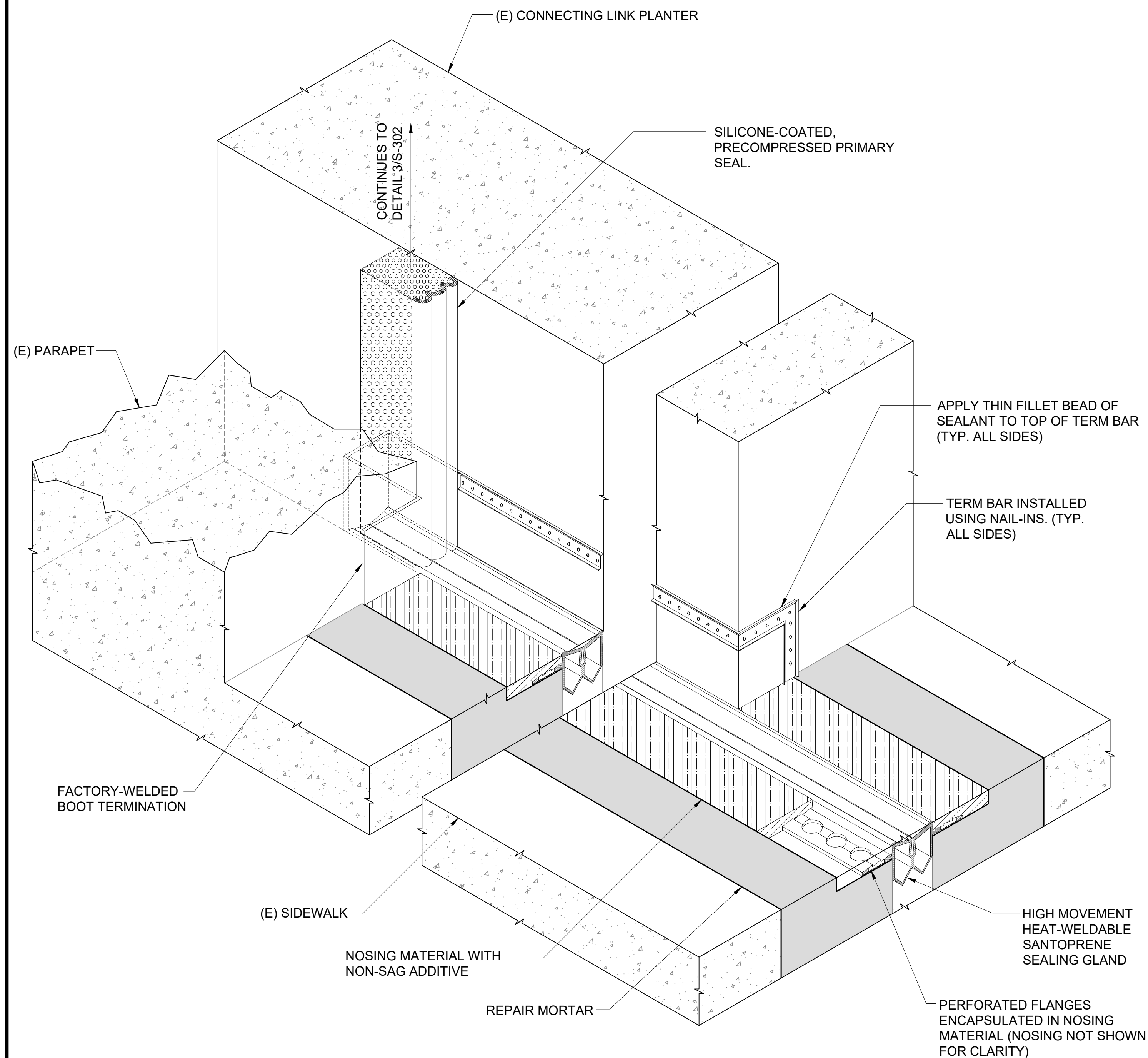
AT
DANIEL K. INOUE INTERNATIONAL AIRPORT
HONOLULU, OAHU, HAWAII

PROJECT NO.:
AO1043-32

SHEET TITLE:

EXPANSION JOINT
REPAIR DETAILS

DATE :	DWG. NO.
SEPTEMBER, 2022	S-302
SHEET :	
28 OF 247 SHEETS	



Sacri' Panchali.

This work was prepared by me or under my supervision

DSGN.	DRWN.	CHKD.	APPD.
MG	MG	SP	

KEY PLAN / NOTES:

NO.	DATE	REVISIONS
-----	------	-----------

CONSTRUCTION DOCUMENTS

SEPTEMBER, 2022
DATE

PROJECT TITLE :

EWA AND DH CONCOURSE ROADWAY IMPROVEMENTS PHASE 1

AT
DANIEL K. INOUE INTERNATIONAL AIRPORT
HONOLULU, OAHU, HAWAII

PROJECT NO.:

AO1043-32

SHEET TITLE:

EXPANSION JOINT REPAIR DETAILS

DATE :	DWG. NO. S-303
SEPTEMBER, 2022	
SHEET :	
29 OF 247 SHEETS	