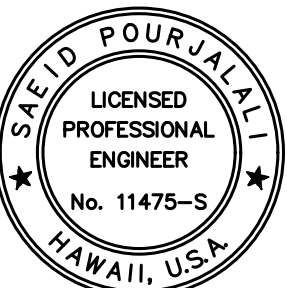


Airports Division
DEPARTMENT OF TRANSPORTATION
STATE OF HAWAII



Saad Pourjalali
04/30/2024

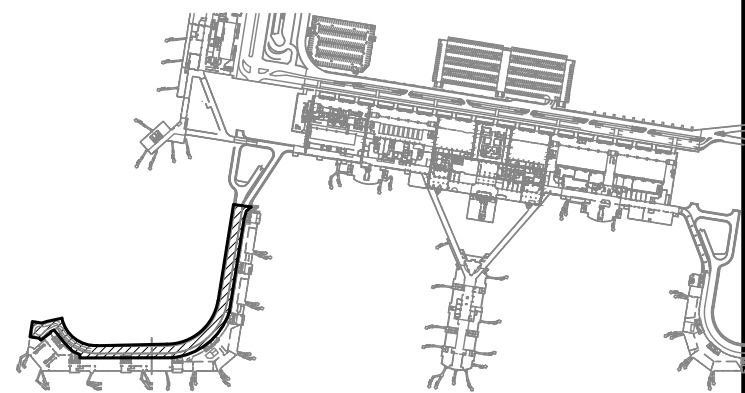
Licensed Expiration Date

This work was prepared by me or under my supervision

DSGN.	DRWN.	CHKD.	APPD.
MG	MG	SP	

KEY PLAN / NOTES:

EWA WING



NO.	DATE	REVISIONS

CONSTRUCTION DOCUMENTS

SEPTEMBER, 2022
DATE

PROJECT TITLE :

EWA AND DH CONCOURSE
ROADWAY IMPROVEMENTS
PHASE 1

AT
DANIEL K. INOUE INTERNATIONAL AIRPORT
HONOLULU, OAHU, HAWAII

PROJECT NO.:

AO1043-32

SHEET TITLE:

EWA WING - SECOND
FLOOR PLAN

DATE :
SEPTEMBER, 2022
SHEET :

DWG. NO.

S-E-200

46 OF 247 SHEETS

NORTH



LIMIT
SCOPE

SEE SHEET S-E-213, PLAN M FOR DEMOLITION
SEE SHEET S-E-229, PLAN M FOR REPAIR

MATCH LINE E2-L

SEE SHEET S-E-212, PLAN L FOR DEMOLITION
SEE SHEET S-E-228, PLAN L FOR REPAIR

MATCH LINE E2-K

SEE SHEET S-E-211, PLAN K FOR DEMOLITION
SEE SHEET S-E-227, PLAN K FOR REPAIR

MATCH LINE E2-J

SEE SHEET S-E-210, PLAN J FOR DEMOLITION
SEE SHEET S-E-226, PLAN J FOR REPAIR

MATCH LINE E2-I

SEE SHEET S-E-209, PLAN I FOR DEMOLITION
SEE SHEET S-E-225, PLAN I FOR REPAIR

MATCH LINE E2-H

SEE SHEET S-E-208, PLAN H FOR DEMOLITION
SEE SHEET S-E-224, PLAN H FOR REPAIR

MATCH LINE E2-G

SEE SHEET S-E-207, PLAN G FOR DEMOLITION
SEE SHEET S-E-223, PLAN G FOR REPAIR

SEE SHEET S-E-206, PLAN F FOR DEMOLITION
SEE SHEET S-E-222, PLAN F FOR REPAIR

SEE SHEET S-E-201, PLAN A FOR DEMOLITION
SEE SHEET S-E-217, PLAN A FOR REPAIR

SEE SHEET S-E-204, PLAN D
FOR DEMOLITION
SEE SHEET S-E-220, PLAN D
FOR REPAIR

SEE SHEET S-E-202, PLAN B
FOR DEMOLITION
SEE SHEET S-E-218, PLAN B
FOR REPAIR

SEE SHEET S-E-203, PLAN C
FOR DEMOLITION
SEE SHEET S-E-219, PLAN C
FOR REPAIR

SEE SHEET S-E-205, PLAN E
FOR DEMOLITION
SEE SHEET S-E-221, PLAN E
FOR REPAIR

345'00'00"
1.00'

MATCH
LINE E2-A

MATCH LINE E2-B

MATCH LINE E2-C

MATCH LINE E2-D

MATCH LINE E2-E

MATCH LINE E2-F

1
S-E-200

EWA WING - OVERALL SECOND FLOOR PLAN

SCALE: 1/64" = 1'-0"

0' 24' 48' 96' 144' 192'
1/64" = 1'-0"