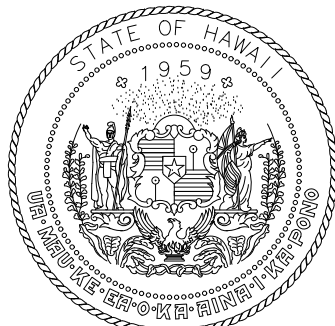
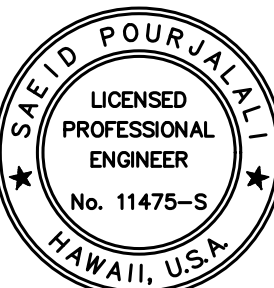


- LEGEND:
- DENOTES DEMOLITION AREA
 - DENOTES PHASE 3 DEMOLITION AREA

- NOTES:
- SEE SHEET S-001 STRUCTURAL NOTES FOR DEMOLITION REQUIREMENTS INCLUDING DUST CONTROL, LIMITATIONS, AND CONTRACTOR RESPONSIBILITIES.
 - SEE SHEET S-600 TO S-603 FOR PROPOSED DUST CONTROL MEASURES. SUBMIT PLAN-OF-ACTION OF DUST CONTROL MEASURES TO DOT-A IN WRITING FOR REVIEW PRIOR TO START OF DEMOLITION.



Airports Division
DEPARTMENT OF TRANSPORTATION
STATE OF HAWAII



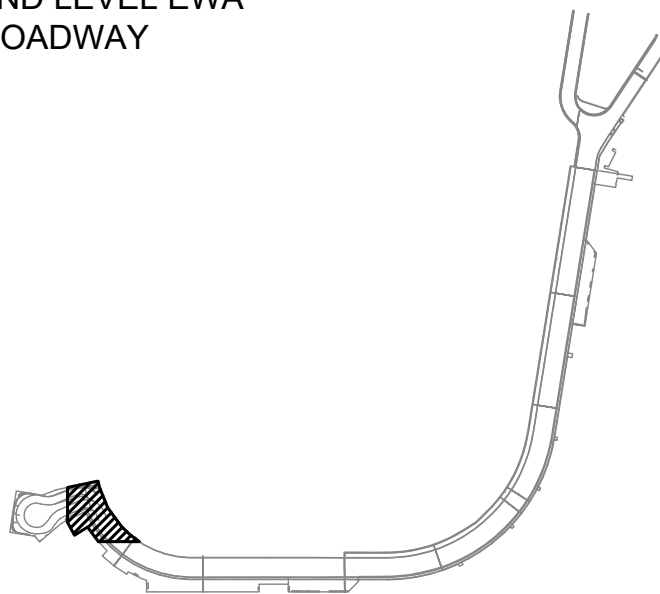
Saad Pourjafari
04/30/2024
Licensed Expiration Date

This work was prepared by me or under my supervision

DSGN.	DRWN.	CHKD.	APPD.
MG	MG	SP	

KEY PLAN / NOTES:

2ND LEVEL EWA
ROADWAY



NO.	DATE	REVISIONS
-----	------	-----------

CONSTRUCTION
DOCUMENTS

SEPTEMBER, 2022
DATE

PROJECT TITLE :

EWA AND DH CONCOURSE
ROADWAY IMPROVEMENTS
PHASE 1

AT
DANIEL K. INOUE INTERNATIONAL AIRPORT
HONOLULU, OAHU, HAWAII

PROJECT NO.:

AO1043-32

SHEET TITLE:

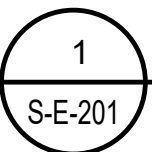
EWA WING - SECOND
FLOOR PARTIAL
DEMOLITION PLAN A

DATE :
SEPTEMBER, 2022
SHEET :

DWG. NO.

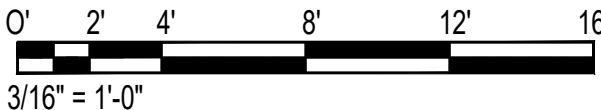
S-E-201

47 OF 247 SHEETS



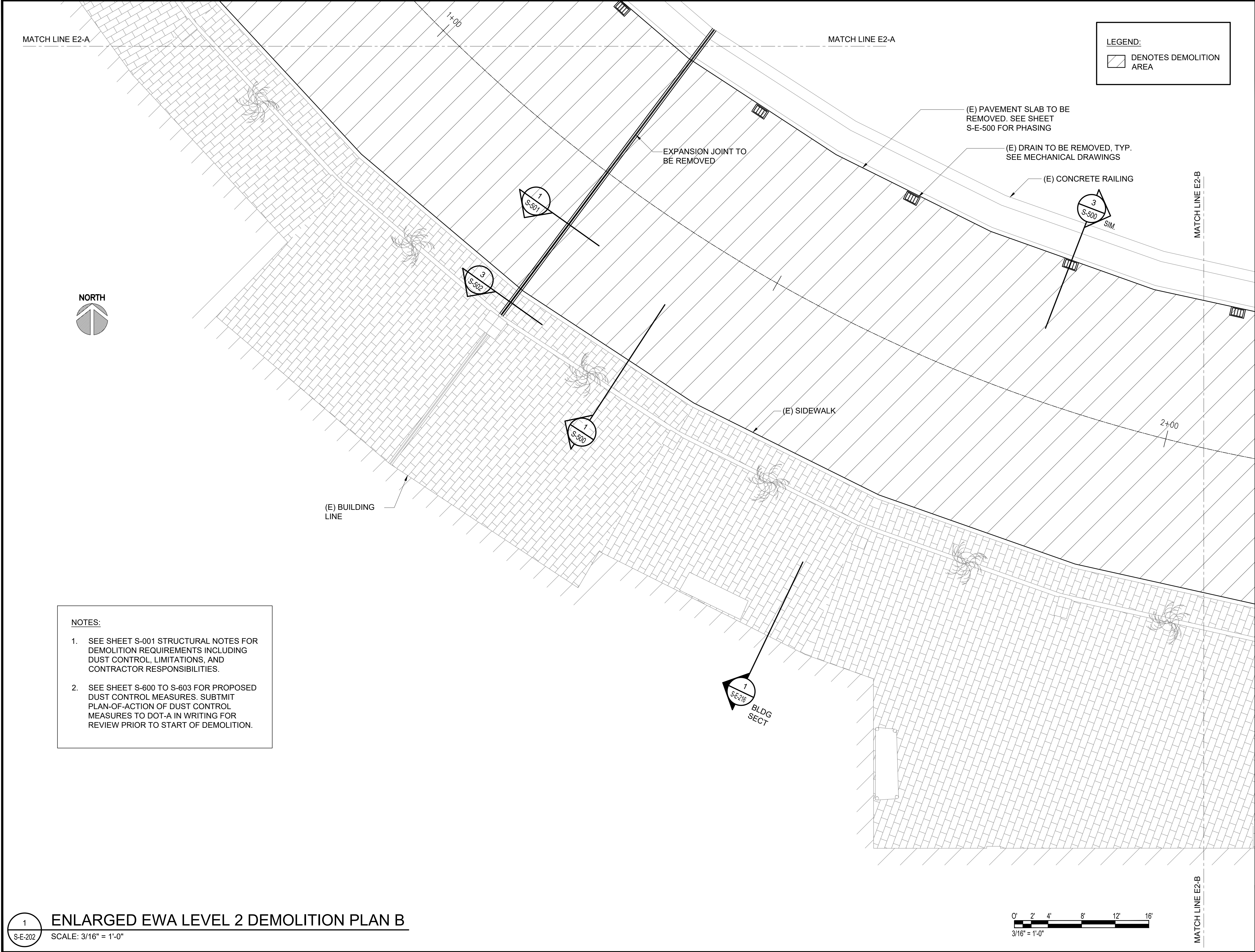
ENLARGED EWA LEVEL 2 DEMOLITION PLAN A

SCALE: 3/16" = 1'-0"



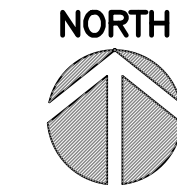
P:\5151-5200\5183 DOT Airports - 2nd and 3rd Level Roadway Improvements\004 Drawings\Structural\AutoCAD_format\2022-09-14 Phase 1 - Prebid Changes\1-02 S-E-201 Enlarged Ewa Demolition Plans.dwg, 9/20/2022 12:19:23 PM, mgoo

P:\S\151-5200\183 DOT Airports - 2nd and 3rd Level Roadway Improvements\004 Drawings\Structural\AutoCAD_format\2022-09-14 Phase 1 - Prebid Changes\1-02 S-E-201 Enlarged Ewa Demolition Plans.dwg, 9/20/2022 12:19:23 PM, mgoo



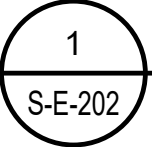
LEGEND:

DENOTES DEMOLITION AREA



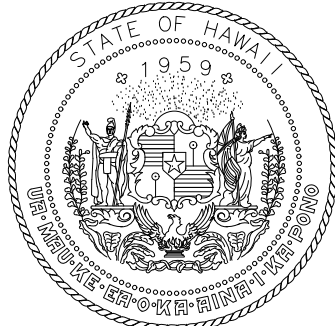
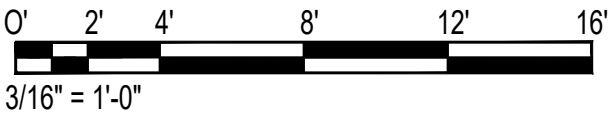
NOTES:

- SEE SHEET S-001 STRUCTURAL NOTES FOR DEMOLITION REQUIREMENTS INCLUDING DUST CONTROL, LIMITATIONS, AND CONTRACTOR RESPONSIBILITIES.
- SEE SHEET S-600 TO S-603 FOR PROPOSED DUST CONTROL MEASURES. SUBMIT PLAN-OF-ACTION OF DUST CONTROL MEASURES TO DOT-A IN WRITING FOR REVIEW PRIOR TO START OF DEMOLITION.

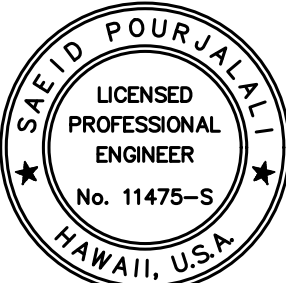


ENLARGED EWA LEVEL 2 DEMOLITION PLAN B

SCALE: 3/16" = 1'-0"



Airports Division
DEPARTMENT OF TRANSPORTATION
STATE OF HAWAII



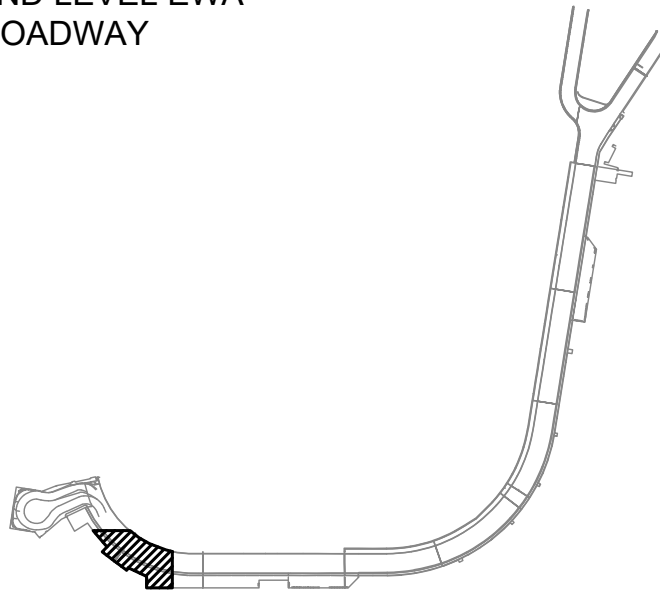
Saad Pourjafari
04/30/2024
Licensed Expiration Date

This work was prepared by me or under my supervision

DSGN.	DRWN.	CHKD.	APPD.
MG	MG	SP	

KEY PLAN / NOTES:

2ND LEVEL EWA
ROADWAY



NO.	DATE	REVISIONS
-----	------	-----------

CONSTRUCTION
DOCUMENTS

SEPTEMBER, 2022
DATE

PROJECT TITLE :

EWA AND DH CONCOURSE
ROADWAY IMPROVEMENTS
PHASE 1

AT
DANIEL K. INOUE INTERNATIONAL AIRPORT
HONOLULU, OAHU, HAWAII

PROJECT NO.:

AO1043-32

SHEET TITLE:

EWA WING - SECOND
FLOOR PARTIAL
DEMOLITION PLAN B

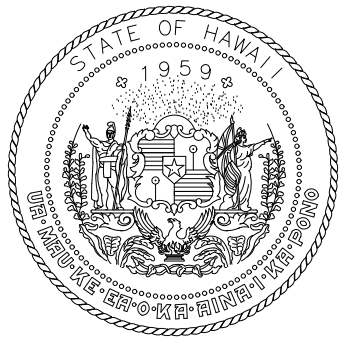
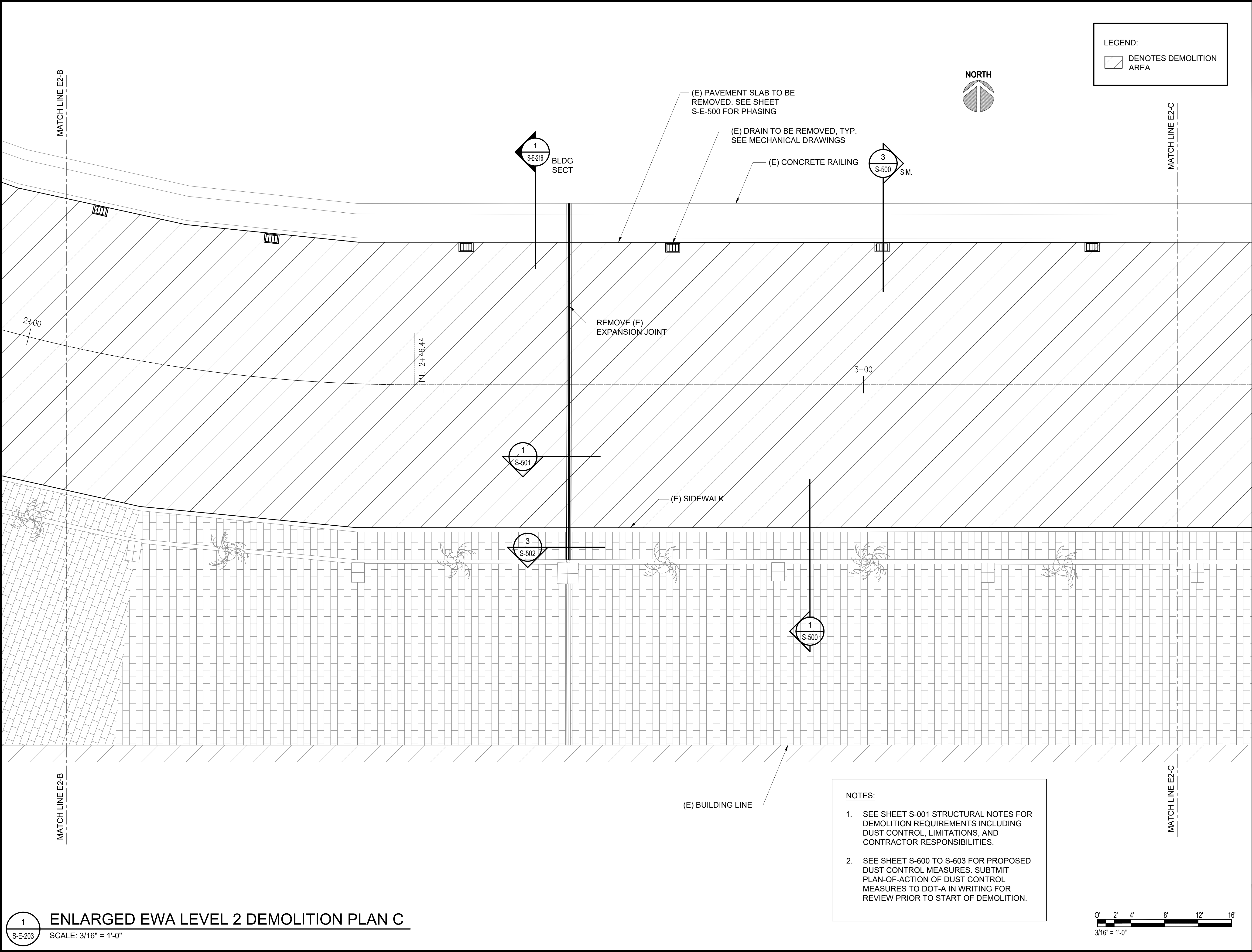
DATE :
SEPTEMBER, 2022
SHEET :

DWG. NO.

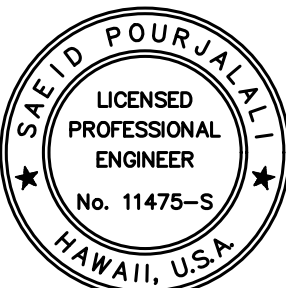
S-E-202

48 OF 247 SHEETS

P:\S\151-5200\183 DOT Airports - 2nd and 3rd Level Roadway Improvements\004 Drawings\Structural\AutoCAD_format\2022-09-14 Phase 1 - Prebid Changes\1-02 S-E-201 Enlarged Ewa Demolition Plans.dwg, 9/20/2022 12:19:24 PM, mgoo



Airports Division
DEPARTMENT OF TRANSPORTATION
STATE OF HAWAII



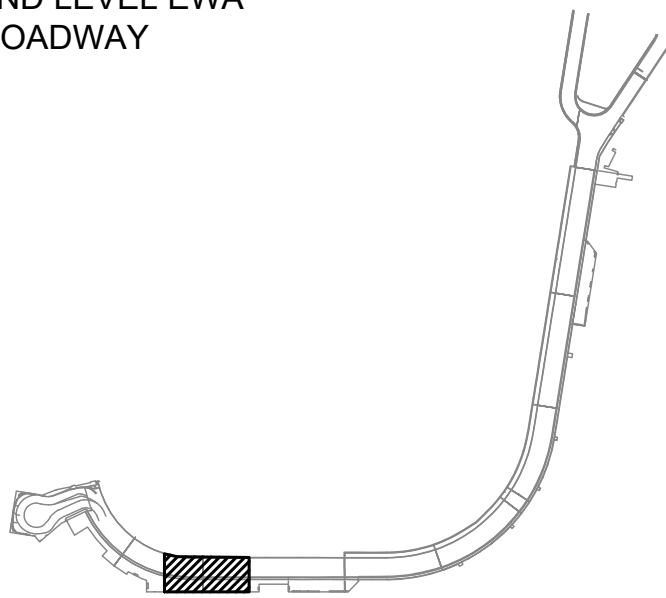
Saad Pourjafari
04/30/2024
Licensed Expiration Date

This work was prepared by me or under my supervision

DSGN.	DRWN.	CHKD.	APPD.
MG	MG	SP	

KEY PLAN / NOTES:

2ND LEVEL EWA
ROADWAY



NO.	DATE	REVISIONS
-----	------	-----------

CONSTRUCTION
DOCUMENTS

SEPTEMBER, 2022
DATE

PROJECT TITLE :

EWA AND DH CONCOURSE
ROADWAY IMPROVEMENTS
PHASE 1

AT
DANIEL K. INOUE INTERNATIONAL AIRPORT
HONOLULU, OAHU, HAWAII

PROJECT NO.:

AO1043-32

SHEET TITLE:

EWA WING - SECOND
FLOOR PARTIAL
DEMOLITION PLAN C

DATE :

SEPTEMBER, 2022

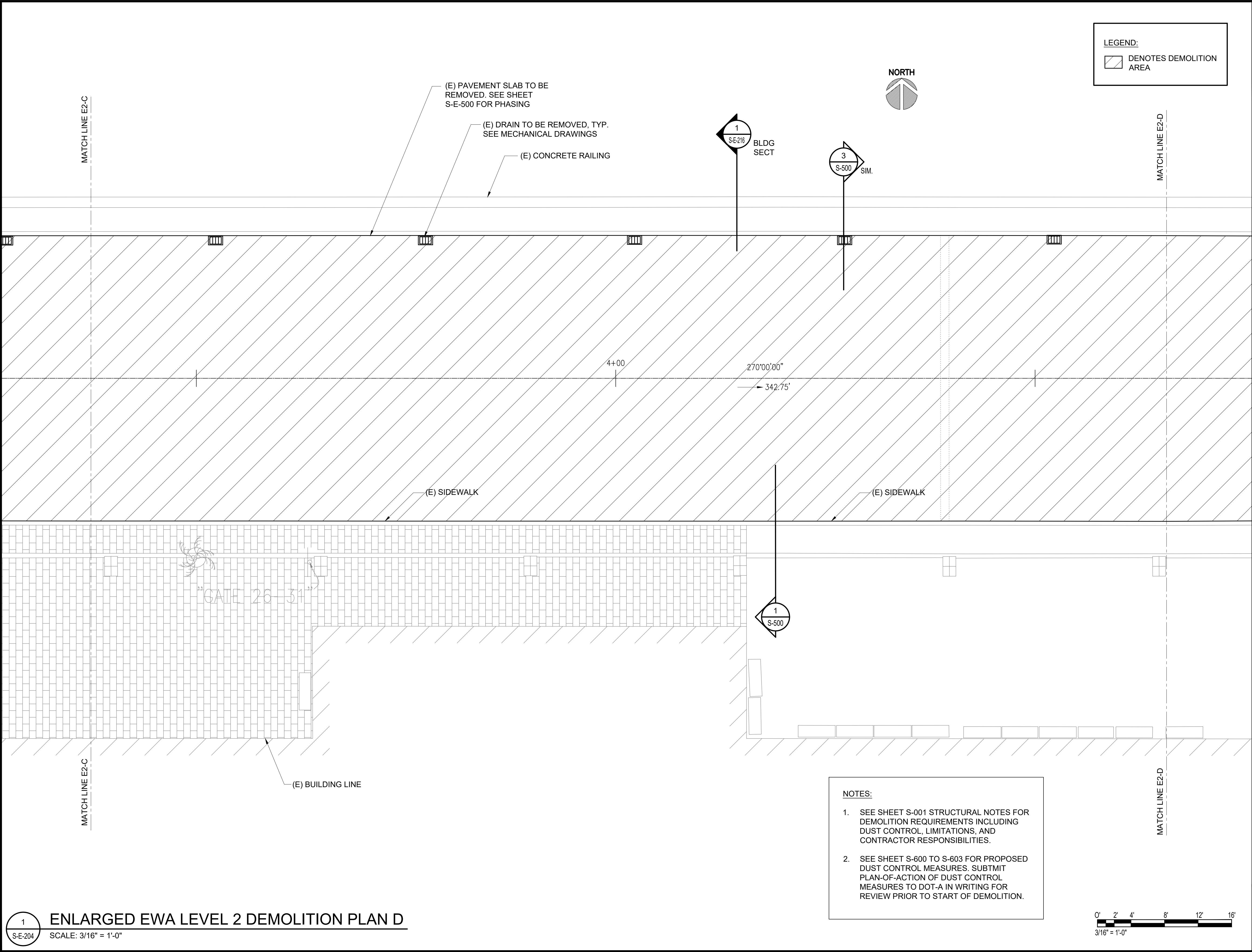
SHEET :

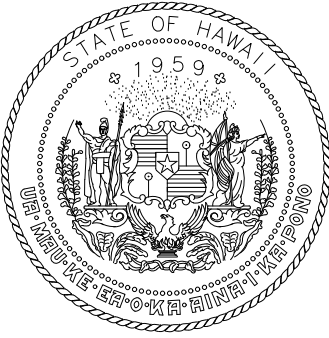
49 OF 247 SHEETS

DWG. NO.

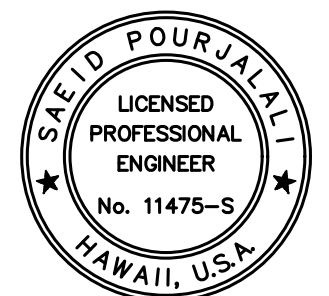
S-E-203

P:\S\151-520\15183 DOT Airports - 2nd and 3rd Level Roadway Improvements\004 Drawings\Structural\AutoCAD_format\2022-09-14 Phase 1 - Prebid Changes\1-02 S-E-201 Enlarged Ewa Demolition Plans.dwg, 9/20/2022 12:19:24 PM, mgoo





Airports Division
DEPARTMENT OF TRANSPORTATION
STATE OF HAWAII



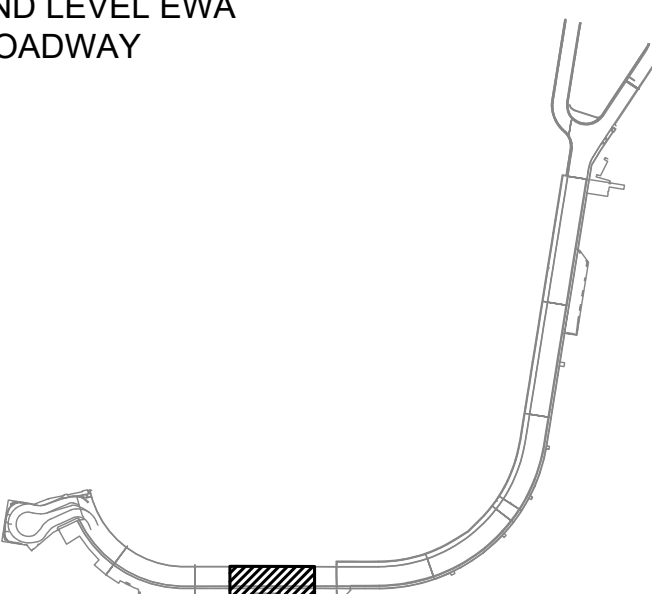
Saad Pourjalebi
04/30/2024
Licensed Expiration Date

This work was prepared by me or under my supervision

DSGN.	DRWN.	CHKD.	APPD.
MG	MG	SP	

KEY PLAN / NOTES:

2ND LEVEL EWA ROADWAY



NO.	DATE	REVISIONS

CONSTRUCTION DOCUMENTS
SEPTEMBER, 2022
DATE

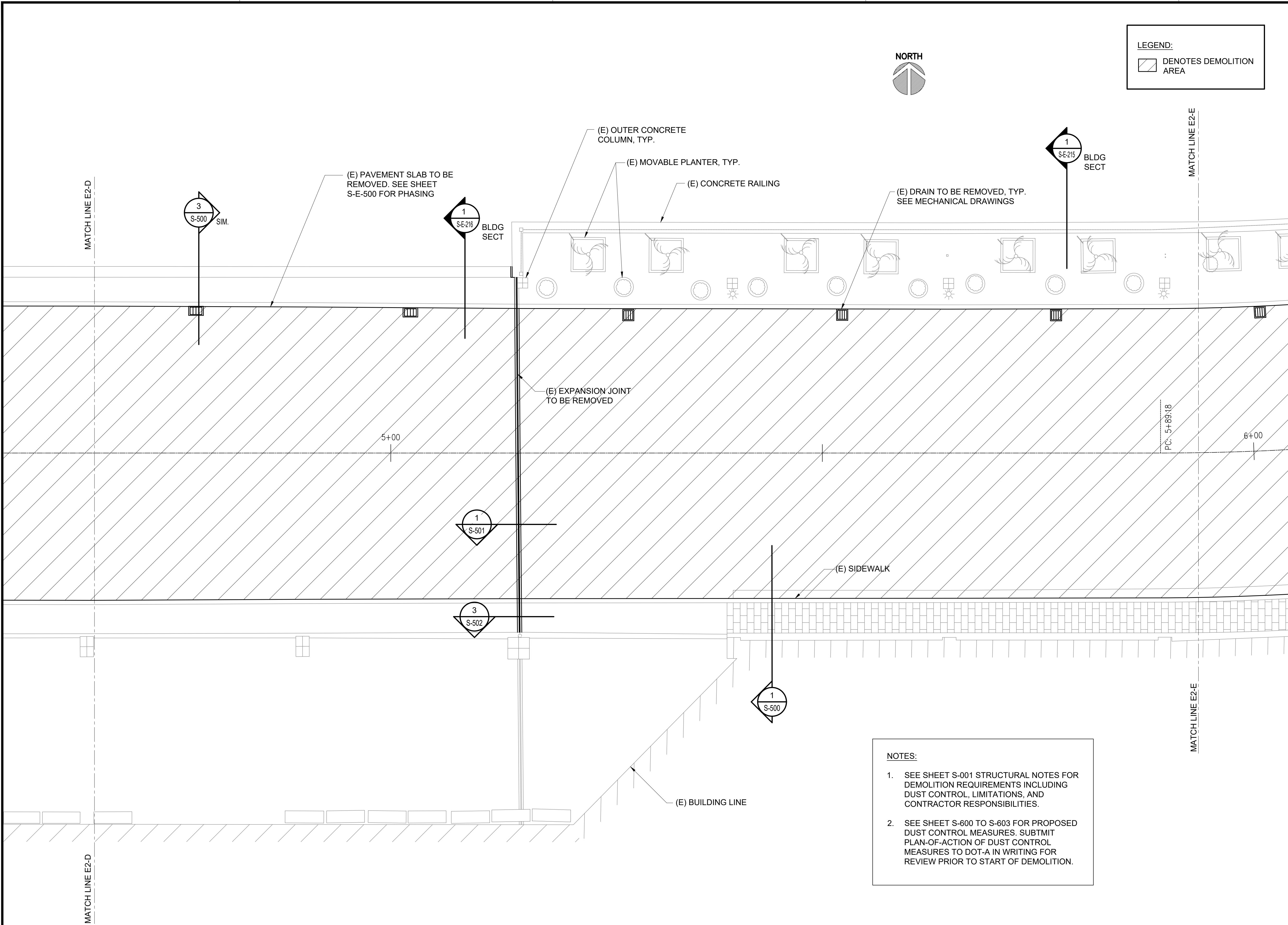
PROJECT TITLE :
EWA AND DH CONCOURSE ROADWAY IMPROVEMENTS PHASE 1
AT
DANIEL K. INOUE INTERNATIONAL AIRPORT
HONOLULU, OAHU, HAWAII

PROJECT NO.:
AO1043-32

SHEET TITLE:
EWA WING - SECOND FLOOR PARTIAL DEMOLITION PLAN D

DATE :	DWG. NO.
SEPTEMBER, 2022	S-E-204
SHEET :	
50 OF 247 SHEETS	

P:\S\151-5200\183 DOT Airports - 2nd and 3rd Level Roadway Improvements\004 Drawings\Structural\AutoCAD_format\2022-09-14 Phase 1 - Prebid Changes\1-02 S-E-201 Enlarged Ewa Demolition Plans.dwg, 9/20/2022 12:19:25 PM, mgoo



LEGEND:

DENOTES DEMOLITION AREA



1
S-E-215
BLDG
SECT

1
S-E-216
BLDG
SECT

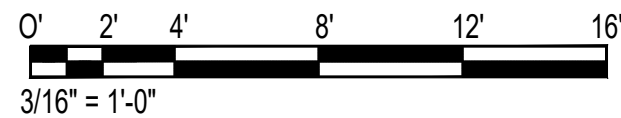
3
S-500
SIM.

1
S-501

3
S-502

1
S-500

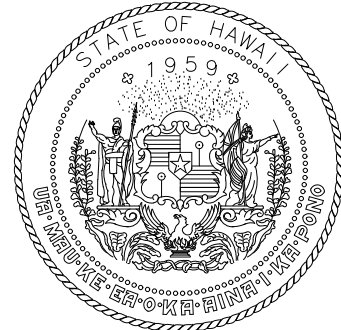
- NOTES:
- SEE SHEET S-001 STRUCTURAL NOTES FOR DEMOLITION REQUIREMENTS INCLUDING DUST CONTROL, LIMITATIONS, AND CONTRACTOR RESPONSIBILITIES.
 - SEE SHEET S-600 TO S-603 FOR PROPOSED DUST CONTROL MEASURES. SUBMIT PLAN-OF-ACTION OF DUST CONTROL MEASURES TO DOT-A IN WRITING FOR REVIEW PRIOR TO START OF DEMOLITION.



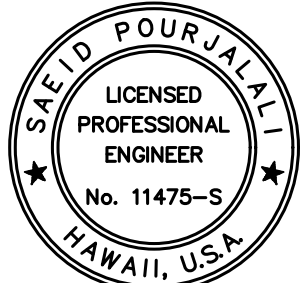
1
S-E-205

ENLARGED EWA LEVEL 2 DEMOLITION PLAN E

SCALE: 3/16" = 1'-0"



Airports Division
DEPARTMENT OF TRANSPORTATION
STATE OF HAWAII



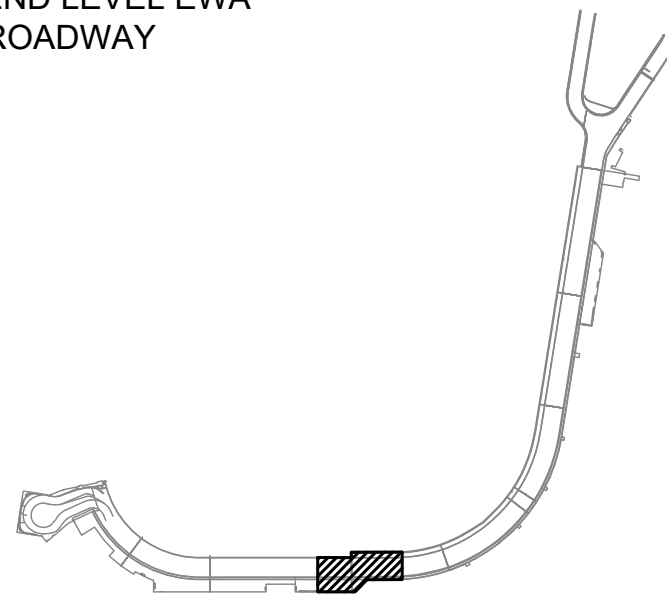
Saif Pourjafari
04/30/2024
Licensed Expiration Date

This work was prepared by me or under my supervision

DSGN.	DRWN.	CHKD.	APPD.
MG	MG	SP	

KEY PLAN / NOTES:

2ND LEVEL EWA
ROADWAY



NO.	DATE	REVISIONS

CONSTRUCTION
DOCUMENTS

SEPTEMBER, 2022
DATE

PROJECT TITLE :

**EWA AND DH CONCOURSE
ROADWAY IMPROVEMENTS
PHASE 1**

AT
DANIEL K. INOUE INTERNATIONAL AIRPORT
HONOLULU, OAHU, HAWAII

PROJECT NO.:

AO1043-32

SHEET TITLE:

**EWA WING - SECOND
FLOOR PARTIAL
DEMOLITION PLAN E**

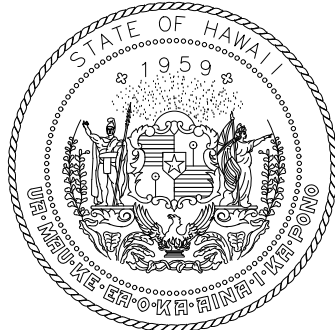
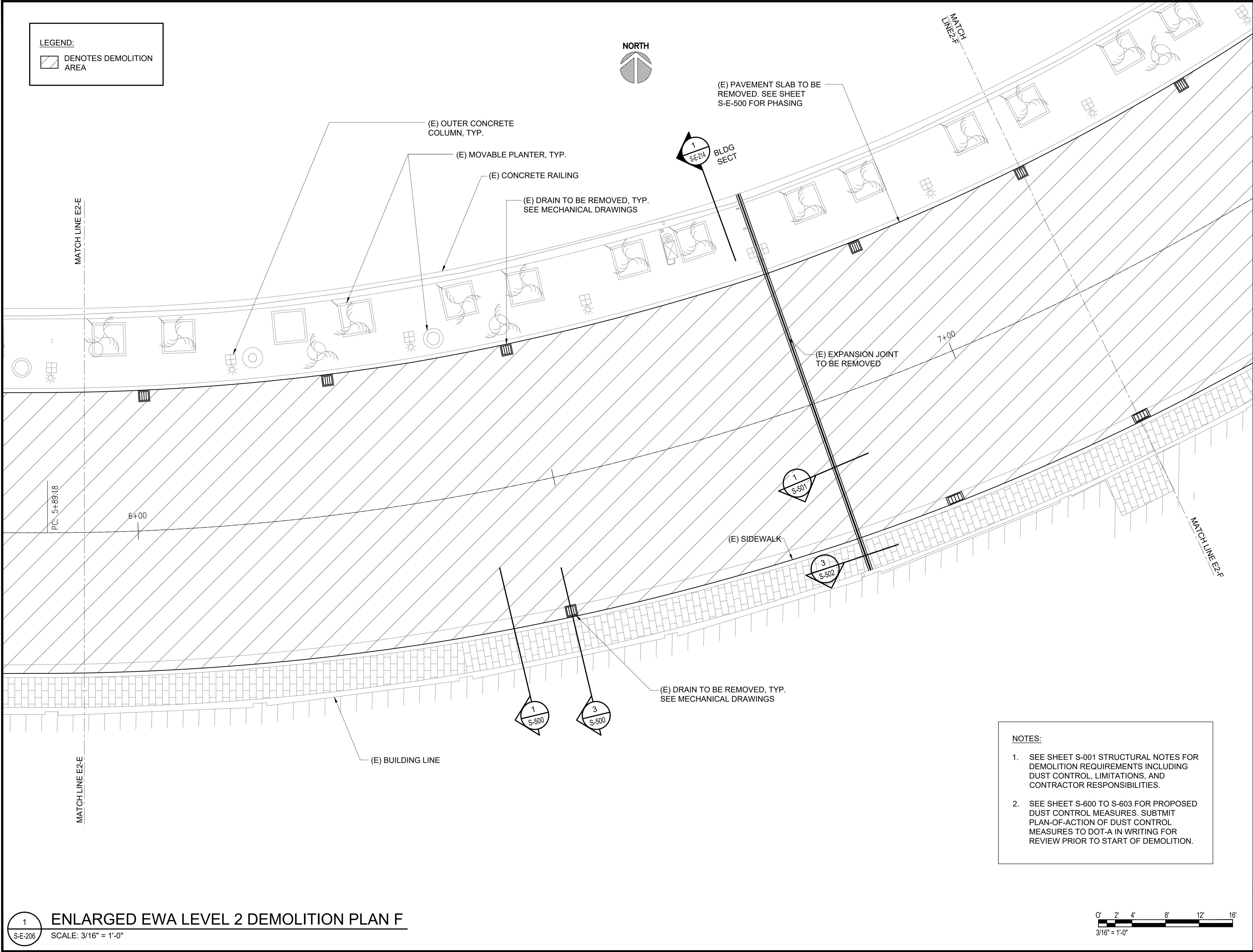
DATE :
SEPTEMBER, 2022
SHEET :

DWG. NO.

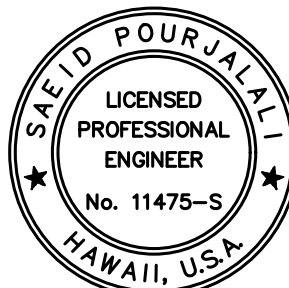
S-E-205

51 OF 247 SHEETS

P:\S\151-5200\183 DOT Airports - 2nd and 3rd Level Roadway Improvements\004 Drawings\Structural\AutoCAD_format\2022-09-14 Phase 1 - Prebid Changes\1-02 S-E-201 Enlarged Ewa Demolition Plans.dwg, 9/20/2022 12:19:25 PM, mgoo



Airports Division
DEPARTMENT OF TRANSPORTATION
STATE OF HAWAII



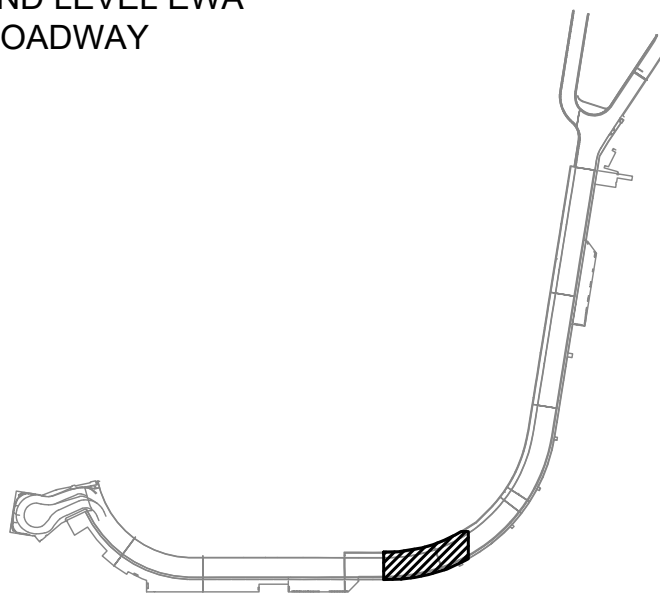
Saad Pourjafari
04/30/2024
Licensed Expiration Date

This work was prepared by me or under my supervision

DSGN.	DRWN.	CHKD.	APPD.
MG	MG	SP	

KEY PLAN / NOTES:

2ND LEVEL EWA
ROADWAY



NO.	DATE	REVISIONS
-----	------	-----------

CONSTRUCTION DOCUMENTS

SEPTEMBER, 2022
DATE

PROJECT TITLE :

**EWA AND DH CONCOURSE
ROADWAY IMPROVEMENTS
PHASE 1**

AT
DANIEL K. INOUE INTERNATIONAL AIRPORT
HONOLULU, OAHU, HAWAII

PROJECT NO.:

AO1043-32

SHEET TITLE:

**EWA WING - SECOND
FLOOR PARTIAL
DEMOLITION PLAN F**

DATE :

SEPTEMBER, 2022

SHEET :

52 OF 247 SHEETS

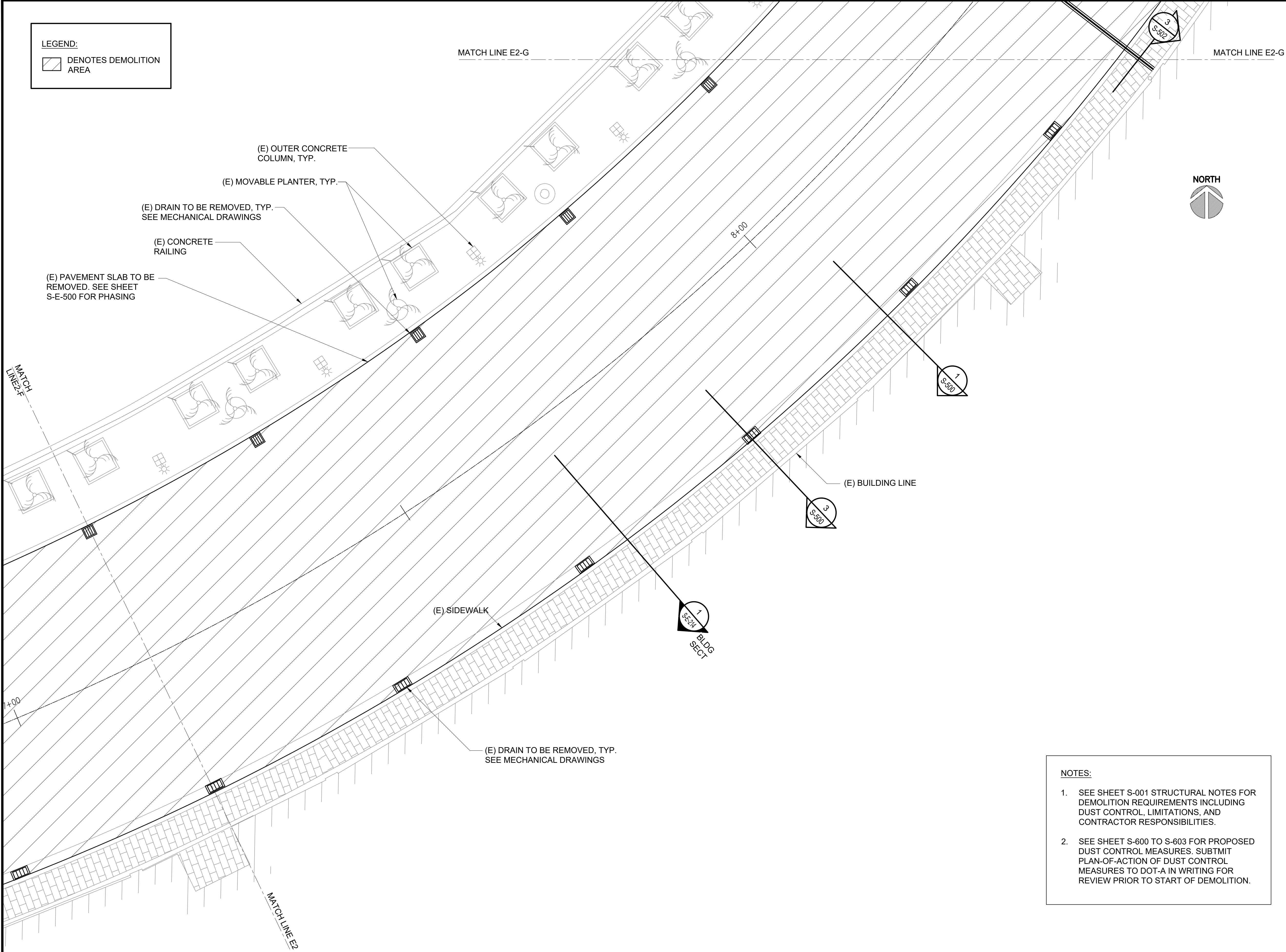
DWG. NO.

S-E-206

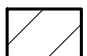
NOTES:

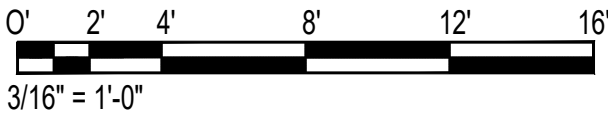
- SEE SHEET S-001 STRUCTURAL NOTES FOR DEMOLITION REQUIREMENTS INCLUDING DUST CONTROL, LIMITATIONS, AND CONTRACTOR RESPONSIBILITIES.
- SEE SHEET S-600 TO S-603 FOR PROPOSED DUST CONTROL MEASURES. SUBMIT PLAN-OF-ACTION OF DUST CONTROL MEASURES TO DOT-A IN WRITING FOR REVIEW PRIOR TO START OF DEMOLITION.

0' 2' 4' 8' 12' 16'
3/16" = 1'-0"



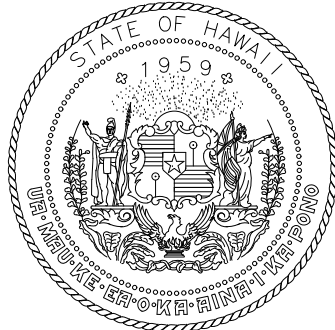
LEGEND:

 DENOTES DEMOLITION AREA

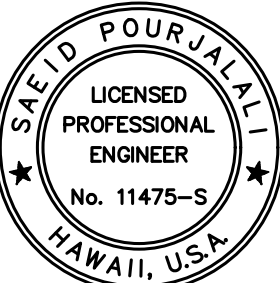


NOTES:

- SEE SHEET S-001 STRUCTURAL NOTES FOR DEMOLITION REQUIREMENTS INCLUDING DUST CONTROL, LIMITATIONS, AND CONTRACTOR RESPONSIBILITIES.
- SEE SHEET S-600 TO S-603 FOR PROPOSED DUST CONTROL MEASURES. SUBMIT PLAN-OF-ACTION OF DUST CONTROL MEASURES TO DOT-A IN WRITING FOR REVIEW PRIOR TO START OF DEMOLITION.



Airports Division
DEPARTMENT OF TRANSPORTATION
STATE OF HAWAII



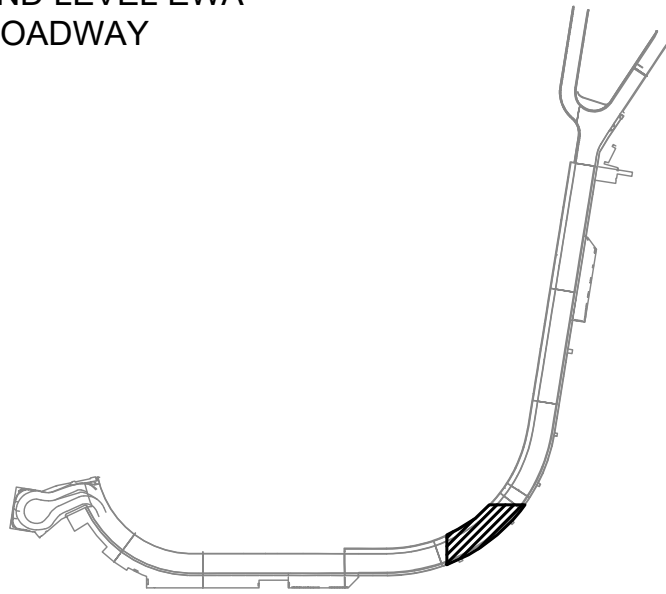
Saad Pourjafari
04/30/2024
Licensed Expiration Date

This work was prepared by me or under my supervision

DSGN.	DRWN.	CHKD.	APPD.
MG	MG	SP	

KEY PLAN / NOTES:

2ND LEVEL EWA
ROADWAY



NO.	DATE	REVISIONS
-----	------	-----------

CONSTRUCTION
DOCUMENTS

SEPTEMBER, 2022
DATE

PROJECT TITLE :

EWA AND DH CONCOURSE
ROADWAY IMPROVEMENTS
PHASE 1

AT
DANIEL K. INOUE INTERNATIONAL AIRPORT
HONOLULU, OAHU, HAWAII

PROJECT NO.:

AO1043-32

SHEET TITLE:

EWA WING - SECOND
FLOOR PARTIAL
DEMOLITION PLAN G

DATE :	DWG. NO.
SEPTEMBER, 2022	S-E-207
SHEET :	

53 OF 247 SHEETS

LEGEND:
DENOTES DEMOLITION
AREA

NOTES:

- SEE SHEET S-001 STRUCTURAL NOTES FOR DEMOLITION REQUIREMENTS INCLUDING DUST CONTROL, LIMITATIONS, AND CONTRACTOR RESPONSIBILITIES.
- SEE SHEET S-600 TO S-603 FOR PROPOSED DUST CONTROL MEASURES. SUBMIT PLAN-OF-ACTION OF DUST CONTROL MEASURES TO DOT-A IN WRITING FOR REVIEW PRIOR TO START OF DEMOLITION.



MATCH LINE E2-H

MATCH LINE E2-H

(E) OUTER CONCRETE
COLUMN, TYP.

(E) MOVABLE PLANTER,
TYP.

(E) CONCRETE
RAILING

(E) DRAIN TO BE REMOVED, TYP.
SEE MECHANICAL DRAWINGS

(E) PAVEMENT SLAB TO BE
REMOVED. SEE SHEET
S-E-500 FOR PHASING

(E) SIDEWALK

(E) DRAIN TO BE REMOVED, TYP.
SEE MECHANICAL DRAWINGS

(E) EXPANSION
JOINT TO BE
REMOVED

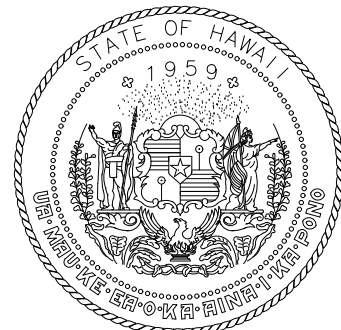
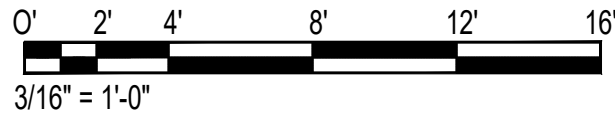
MATCH LINE E2-G

MATCH LINE E2-G

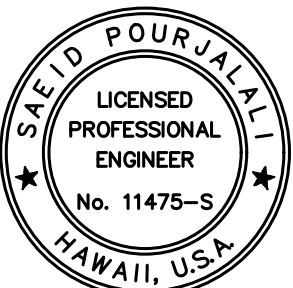


ENLARGED EWA LEVEL 2 DEMOLITION PLAN H

SCALE: 3/16" = 1'-0"



Airports Division
DEPARTMENT OF TRANSPORTATION
STATE OF HAWAII



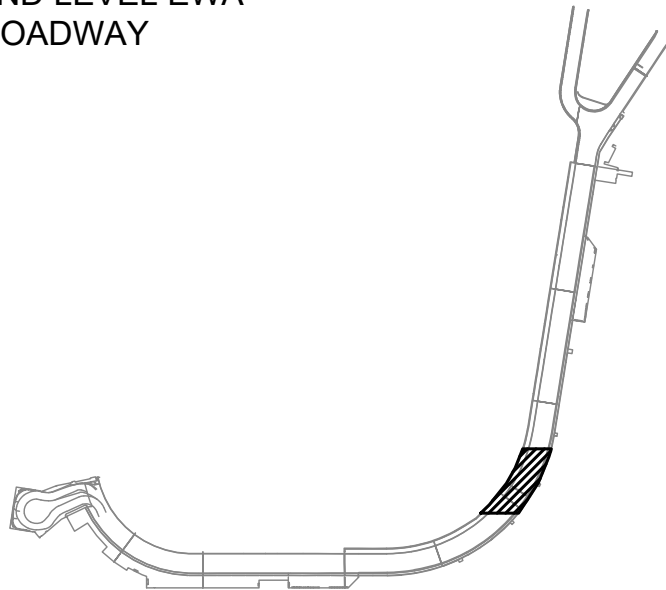
Saad Pourjafari
04/30/2024
Licensed Expiration Date

This work was prepared by me or under my supervision

DSGN.	DRWN.	CHKD.	APPD.
MG	MG	SP	

KEY PLAN / NOTES:

2ND LEVEL EWA
ROADWAY



NO. DATE REVISIONS

CONSTRUCTION
DOCUMENTS

SEPTEMBER, 2022
DATE

PROJECT TITLE :

EWA AND DH CONCOURSE
ROADWAY IMPROVEMENTS
PHASE 1

AT
DANIEL K. INOUE INTERNATIONAL AIRPORT
HONOLULU, OAHU, HAWAII

PROJECT NO.:

AO1043-32

SHEET TITLE:

EWA WING - SECOND
FLOOR PARTIAL
DEMOLITION PLAN H

DATE :

SEPTEMBER, 2022

SHEET :

54 OF 247 SHEETS

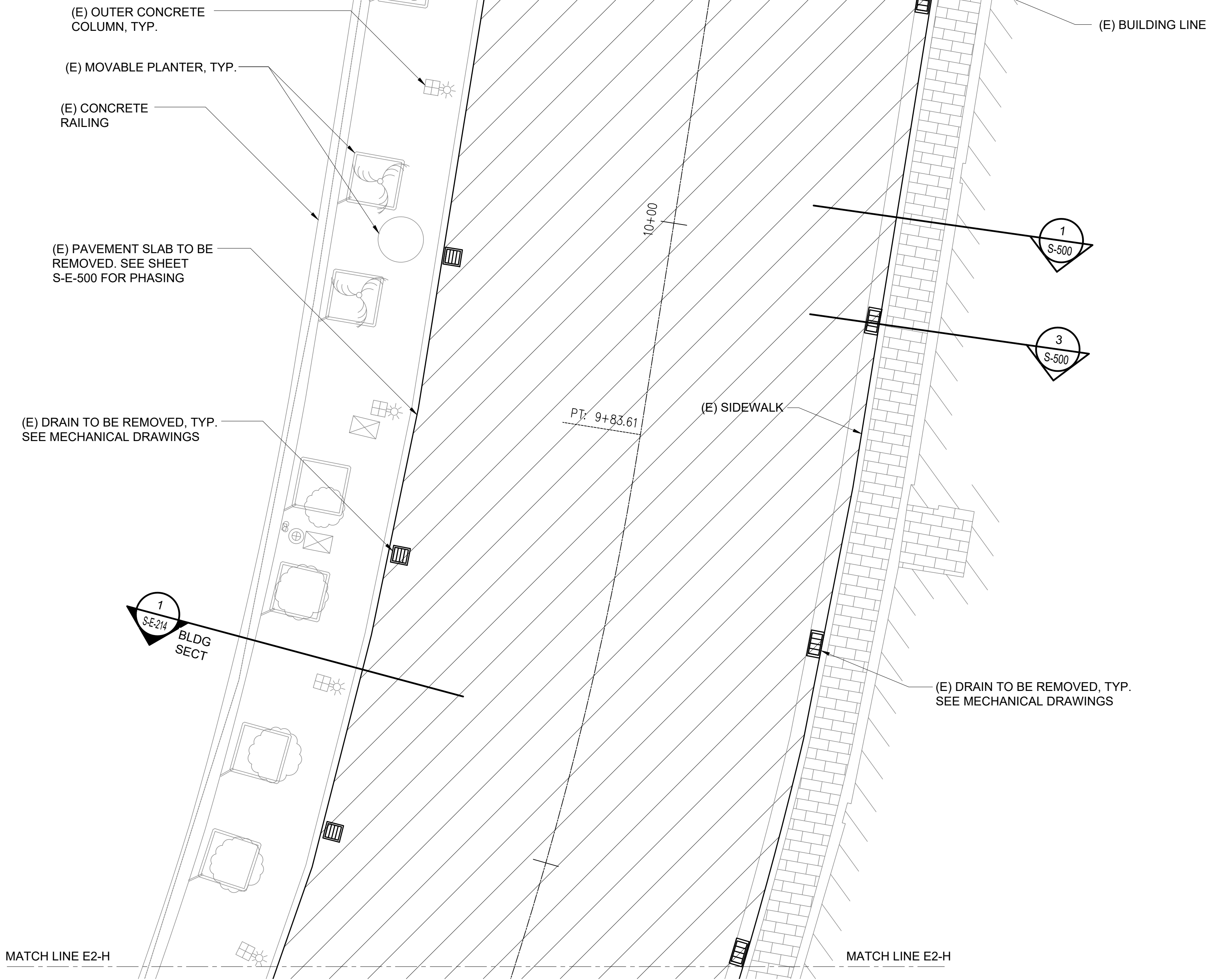
DWG. NO.

S-E-208

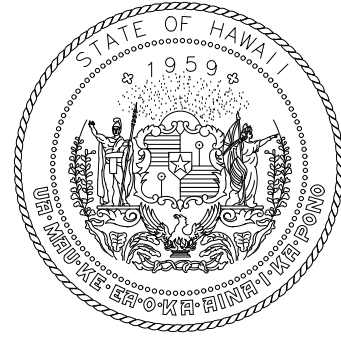
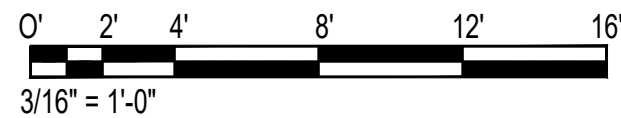
LEGEND:
DENOTES DEMOLITION
AREA

NOTES:

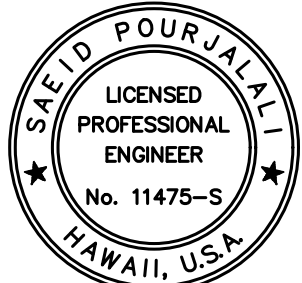
- SEE SHEET S-001 STRUCTURAL NOTES FOR DEMOLITION REQUIREMENTS INCLUDING DUST CONTROL, LIMITATIONS, AND CONTRACTOR RESPONSIBILITIES.
- SEE SHEET S-600 TO S-603 FOR PROPOSED DUST CONTROL MEASURES. SUBMIT PLAN-OF-ACTION OF DUST CONTROL MEASURES TO DOT-A IN WRITING FOR REVIEW PRIOR TO START OF DEMOLITION.



1 ENLARGED EWA LEVEL 2 DEMOLITION PLAN I
S-E-209 SCALE: 3/16" = 1'-0"



Airports Division
DEPARTMENT OF TRANSPORTATION
STATE OF HAWAII



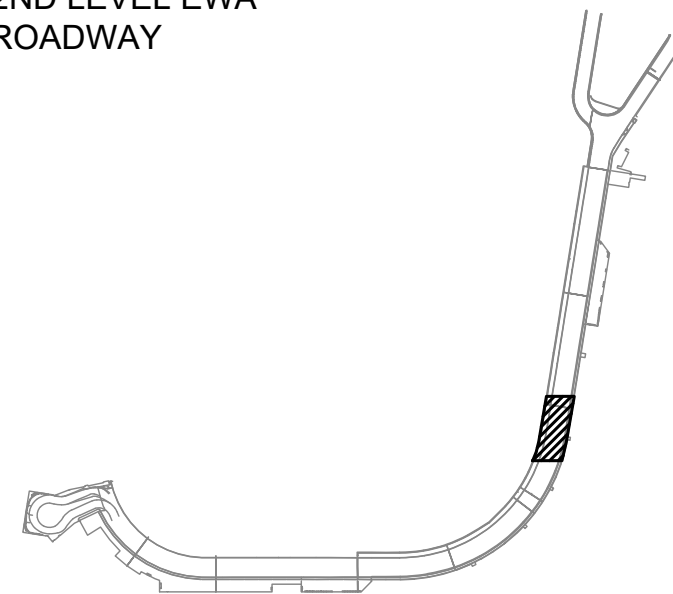
Saad Pourjafari
04/30/2024
Licensed Expiration Date

This work was prepared by me or under my supervision

DSGN.	DRWN.	CHKD.	APPD.
MG	MG	SP	

KEY PLAN / NOTES:

2ND LEVEL EWA
ROADWAY



NO.	DATE	REVISIONS

CONSTRUCTION
DOCUMENTS

SEPTEMBER, 2022
DATE

PROJECT TITLE :

EWA AND DH CONCOURSE
ROADWAY IMPROVEMENTS
PHASE 1

AT
DANIEL K. INOUE INTERNATIONAL AIRPORT
HONOLULU, OAHU, HAWAII

PROJECT NO.:

AO1043-32

SHEET TITLE:

EWA WING - SECOND
FLOOR PARTIAL
DEMOLITION PLAN I

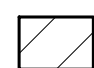
DATE :
SEPTEMBER, 2022
SHEET :

DWG. NO.

S-E-209

55 OF 247 SHEETS

LEGEND:

 DENOTES DEMOLITION AREA

NOTES:

- SEE SHEET S-001 STRUCTURAL NOTES FOR DEMOLITION REQUIREMENTS INCLUDING DUST CONTROL, LIMITATIONS, AND CONTRACTOR RESPONSIBILITIES.
- SEE SHEET S-600 TO S-603 FOR PROPOSED DUST CONTROL MEASURES. SUBMIT PLAN-OF-ACTION OF DUST CONTROL MEASURES TO DOT-A IN WRITING FOR REVIEW PRIOR TO START OF DEMOLITION.

MATCH LINE E2-J

NORTH

(E) OUTER CONCRETE COLUMN, TYP.

(E) MOVABLE PLANTER, TYP.

(E) CONCRETE RAILING

(E) PAVEMENT SLAB TO BE REMOVED. SEE SHEET S-E-500 FOR PHASING

(E) DRAIN TO BE REMOVED, TYP. SEE MECHANICAL DRAWINGS

(E) SIDEWALK

(E) DRAIN TO BE REMOVED, TYP. SEE MECHANICAL DRAWINGS

(E) BUILDING LINE

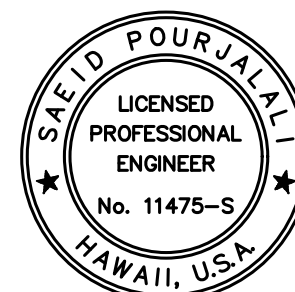
MATCH LINE E2-I

MATCH LINE E2-I

MATCH LINE E2-J



Airports Division
DEPARTMENT OF TRANSPORTATION
STATE OF HAWAII



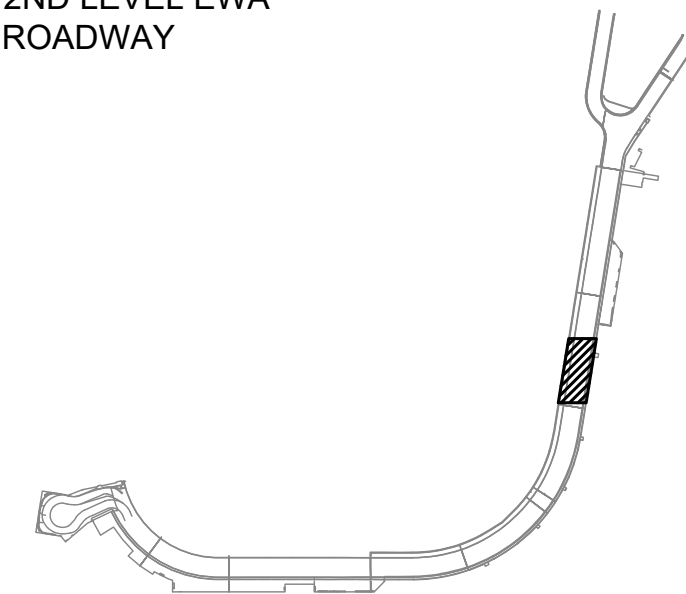
Saad Pourjafari
04/30/2024
Licensed Expiration Date

This work was prepared by me or under my supervision

DSGN.	DRWN.	CHKD.	APPD.
MG	MG	SP	

KEY PLAN / NOTES:

2ND LEVEL EWA
ROADWAY



NO.	DATE	REVISIONS
-----	------	-----------

CONSTRUCTION
DOCUMENTS

SEPTEMBER, 2022
DATE

PROJECT TITLE :

EWA AND DH CONCOURSE
ROADWAY IMPROVEMENTS
PHASE 1

AT
DANIEL K. INOUE INTERNATIONAL AIRPORT
HONOLULU, OAHU, HAWAII

PROJECT NO.:

AO1043-32

SHEET TITLE:

EWA WING - SECOND
FLOOR PARTIAL
DEMOLITION PLAN J

DATE :

SEPTEMBER, 2022

SHEET :

56 OF 247 SHEETS

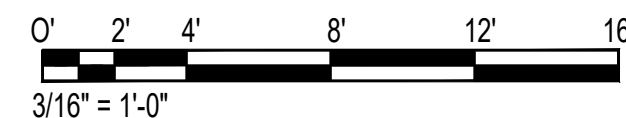
DWG. NO.

S-E-210



ENLARGED EWA LEVEL 2 DEMOLITION PLAN J

SCALE: 3/16" = 1'-0"



P:\S\151-5200\183 DOT Airports - 2nd and 3rd Level Roadway Improvements\004 Drawings\Structural\AutoCAD_format\2022-09-14 Phase 1 - Prebid Changes\1-02 S-E-201 Enlarged Ewa Demolition Plans.dwg, 9/20/2022 12:19:27 PM, rmgoo

LEGEND:

DENOTES DEMOLITION AREA

NOTES:

- SEE SHEET S-001 STRUCTURAL NOTES FOR DEMOLITION REQUIREMENTS INCLUDING DUST CONTROL, LIMITATIONS, AND CONTRACTOR RESPONSIBILITIES.
- SEE SHEET S-600 TO S-603 FOR PROPOSED DUST CONTROL MEASURES. SUBMIT PLAN-OF-ACTION OF DUST CONTROL MEASURES TO DOT-A IN WRITING FOR REVIEW PRIOR TO START OF DEMOLITION.



MATCH LINE E2-K

MATCH LINE E2-K

(E) MOVABLE PLANTER, TYP.

(E) EXPANSION JOINT TO BE REMOVED

(E) CONCRETE RAILING

(E) OUTER CONCRETE COLUMN, TYP.

(E) PAVEMENT SLAB TO BE REMOVED. SEE SHEET S-E-500 FOR PHASING

(E) SIDEWALK

(E) DRAIN TO BE REMOVED, TYP. SEE MECHANICAL DRAWINGS

(E) DRAIN TO BE REMOVED, TYP. SEE MECHANICAL DRAWINGS

(E) SIDEWALK

(E) BUILDING LINE

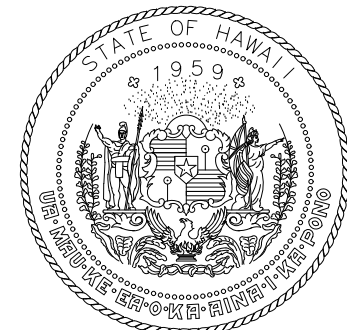
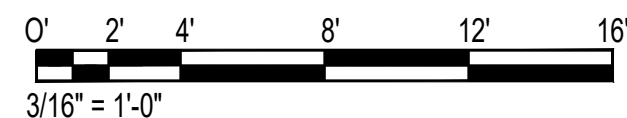
MATCH LINE E2-J

MATCH LINE E2-J

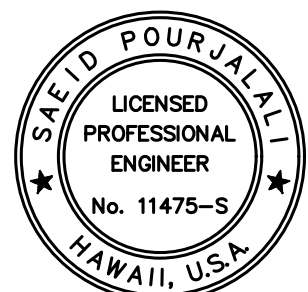


ENLARGED EWA LEVEL 2 DEMOLITION PLAN K

SCALE: 3/16" = 1'-0"



Airports Division
DEPARTMENT OF TRANSPORTATION
STATE OF HAWAII



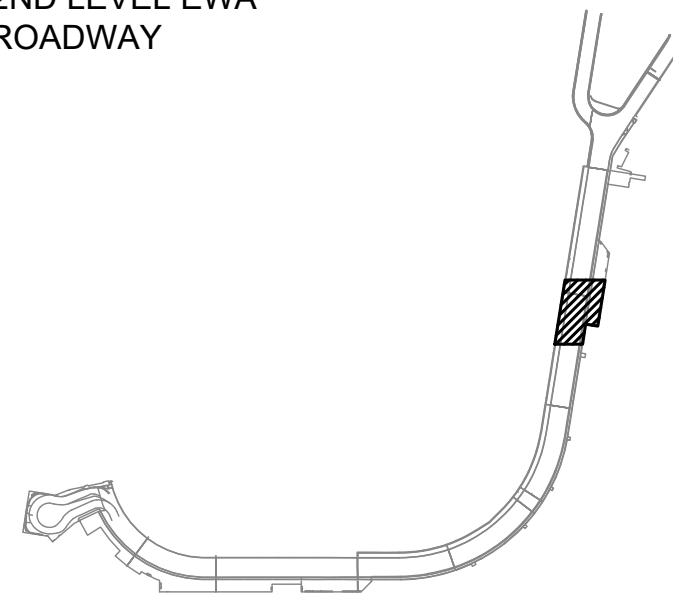
Saad Pourjafari
04/30/2024
Licensed Expiration Date

This work was prepared by me or under my supervision

DSGN.	DRWN.	CHKD.	APPD.
MG	MG	SP	

KEY PLAN / NOTES:

2ND LEVEL EWA
ROADWAY



NO.	DATE	REVISIONS
-----	------	-----------

CONSTRUCTION DOCUMENTS

SEPTEMBER, 2022
DATE

PROJECT TITLE :

EWA AND DH CONCOURSE
ROADWAY IMPROVEMENTS
PHASE 1

AT
DANIEL K. INOUE INTERNATIONAL AIRPORT
HONOLULU, OAHU, HAWAII

PROJECT NO.:

AO1043-32

SHEET TITLE:

EWA WING - SECOND
FLOOR PARTIAL
DEMOLITION PLAN K

DATE :

SEPTEMBER, 2022

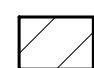
SHEET :

57 OF 247 SHEETS

DWG. NO.

S-E-211

LEGEND:

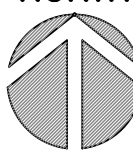
 DENOTES DEMOLITION AREA

NOTES:

- SEE SHEET S-001 STRUCTURAL NOTES FOR DEMOLITION REQUIREMENTS INCLUDING DUST CONTROL, LIMITATIONS, AND CONTRACTOR RESPONSIBILITIES.
- SEE SHEET S-600 TO S-603 FOR PROPOSED DUST CONTROL MEASURES. SUBMIT PLAN-OF-ACTION OF DUST CONTROL MEASURES TO DOT-A IN WRITING FOR REVIEW PRIOR TO START OF DEMOLITION.

MATCH LINE E2-L

NORTH



MATCH LINE E2-L

(E) MOVABLE PLANTER, TYP.

(E) CONCRETE RAILING

(E) OUTER CONCRETE COLUMN, TYP.

(E) PAVEMENT SLAB TO BE REMOVED. SEE SHEET S-E-500 FOR PHASING

(E) SIDEWALK

(E) SIDEWALK

(E) DRAIN TO BE REMOVED, TYP. SEE MECHANICAL DRAWINGS

(E) DRAIN TO BE REMOVED, TYP. SEE MECHANICAL DRAWINGS

(E) BUILDING LINE

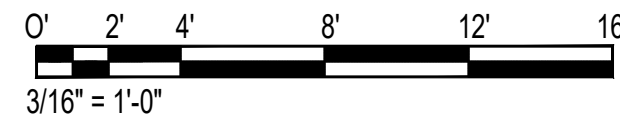
MATCH LINE E2-K

MATCH LINE E2-K

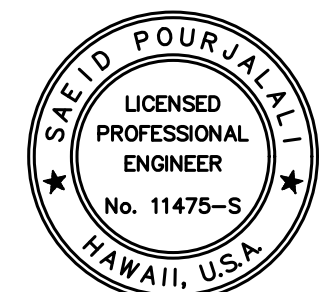


ENLARGED EWA LEVEL 2 DEMOLITION PLAN L

SCALE: 3/16" = 1'-0"



Airports Division
DEPARTMENT OF TRANSPORTATION
STATE OF HAWAII



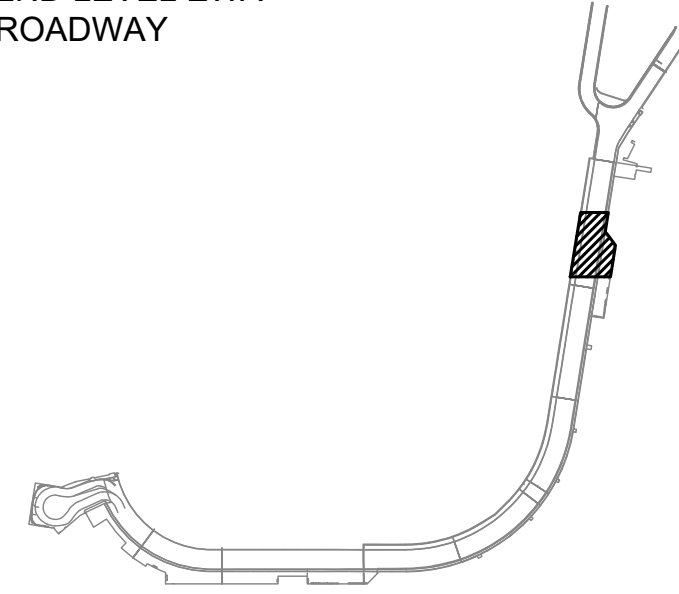
Saad Pourjafari
04/30/2024
Licensed Expiration Date

This work was prepared by me or under my supervision

DSGN.	DRWN.	CHKD.	APPD.
MG	MG	SP	

KEY PLAN / NOTES:

2ND LEVEL EWA
ROADWAY



NO.	DATE	REVISIONS
-----	------	-----------

CONSTRUCTION
DOCUMENTS

SEPTEMBER, 2022
DATE

PROJECT TITLE :

EWA AND DH CONCOURSE
ROADWAY IMPROVEMENTS
PHASE 1

AT
DANIEL K. INOUE INTERNATIONAL AIRPORT
HONOLULU, OAHU, HAWAII

PROJECT NO.:

AO1043-32

SHEET TITLE:

EWA WING - SECOND
FLOOR PARTIAL
DEMOLITION PLAN L

DATE :

SEPTEMBER, 2022

SHEET :

58 OF 247 SHEETS

DWG. NO.

S-E-212

P:\S\151-5200\183 DOT Airports - 2nd and 3rd Level Roadway Improvements\004 Drawings\Structural\AutoCAD_format\2022-09-14 Phase 1 - Prebid Changes\1-02 S-E-201 Enlarged Ewa Demolition Plans.dwg, 9/20/2022 12:19:28 PM, mgoo

LEGEND:

 DENOTES DEMOLITION AREA

NOTES:

- SEE SHEET S-001 STRUCTURAL NOTES FOR DEMOLITION REQUIREMENTS INCLUDING DUST CONTROL, LIMITATIONS, AND CONTRACTOR RESPONSIBILITIES.
- SEE SHEET S-600 TO S-603 FOR PROPOSED DUST CONTROL MEASURES. SUBMIT PLAN-OF-ACTION OF DUST CONTROL MEASURES TO DOT-A IN WRITING FOR REVIEW PRIOR TO START OF DEMOLITION.



(E) MOVABLE PLANTER, TYP.

(E) CONCRETE RAILING

(E) OUTER CONCRETE COLUMN, TYP.

(E) PAVEMENT SLAB TO BE REMOVED. SEE SHEET S-E-500 FOR PHASING

(E) DRAIN TO BE REMOVED, TYP. SEE MECHANICAL DRAWINGS

1
S-E-214
BLDG SECT

3
S-501

(E) EXPANSION JOINT TO BE REMOVED

3
S-500

(E) SIDEWALK

1
S-500

(E) DRAIN TO BE REMOVED, TYP. SEE MECHANICAL DRAWINGS

(E) BUILDING LINE

MATCH LINE E2-L

MATCH LINE E2-L

1
S-E-213

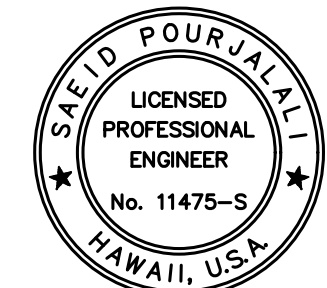
ENLARGED EWA LEVEL 2 DEMOLITION PLAN M

SCALE: 3/16" = 1'-0"

0' 2' 4' 8' 12' 16'
3/16" = 1'-0"



Airports Division
DEPARTMENT OF TRANSPORTATION
STATE OF HAWAII



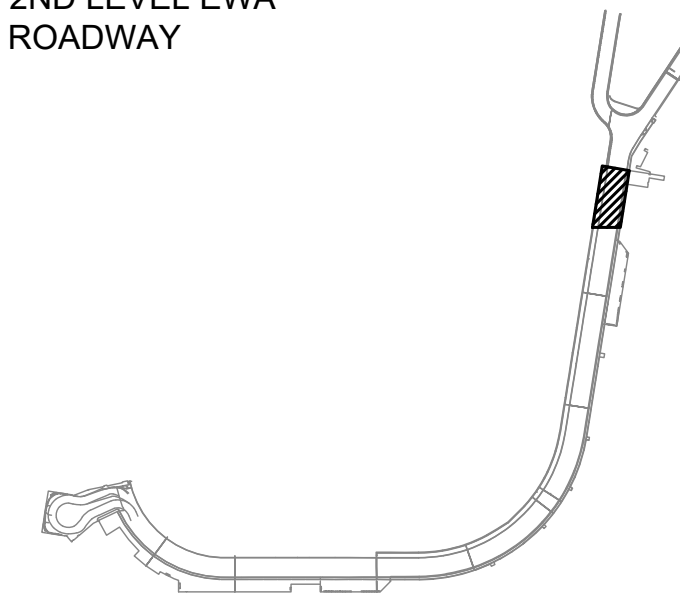
Saad Pourjafari
04/30/2024
Licensed Expiration Date

This work was prepared by me or under my supervision

DSGN.	DRWN.	CHKD.	APPD.
MG	MG	SP	

KEY PLAN / NOTES:

2ND LEVEL EWA
ROADWAY



NO.	DATE	REVISIONS
-----	------	-----------

CONSTRUCTION DOCUMENTS

SEPTEMBER, 2022
DATE

PROJECT TITLE :

EWA AND DH CONCOURSE
ROADWAY IMPROVEMENTS
PHASE 1

AT
DANIEL K. INOUE INTERNATIONAL AIRPORT
HONOLULU, OAHU, HAWAII

PROJECT NO.:

AO1043-32

SHEET TITLE:

EWA WING - SECOND
FLOOR PARTIAL
DEMOLITION PLAN M

DATE :

SEPTEMBER, 2022

SHEET :

59 OF 247 SHEETS

DWG. NO.

S-E-213