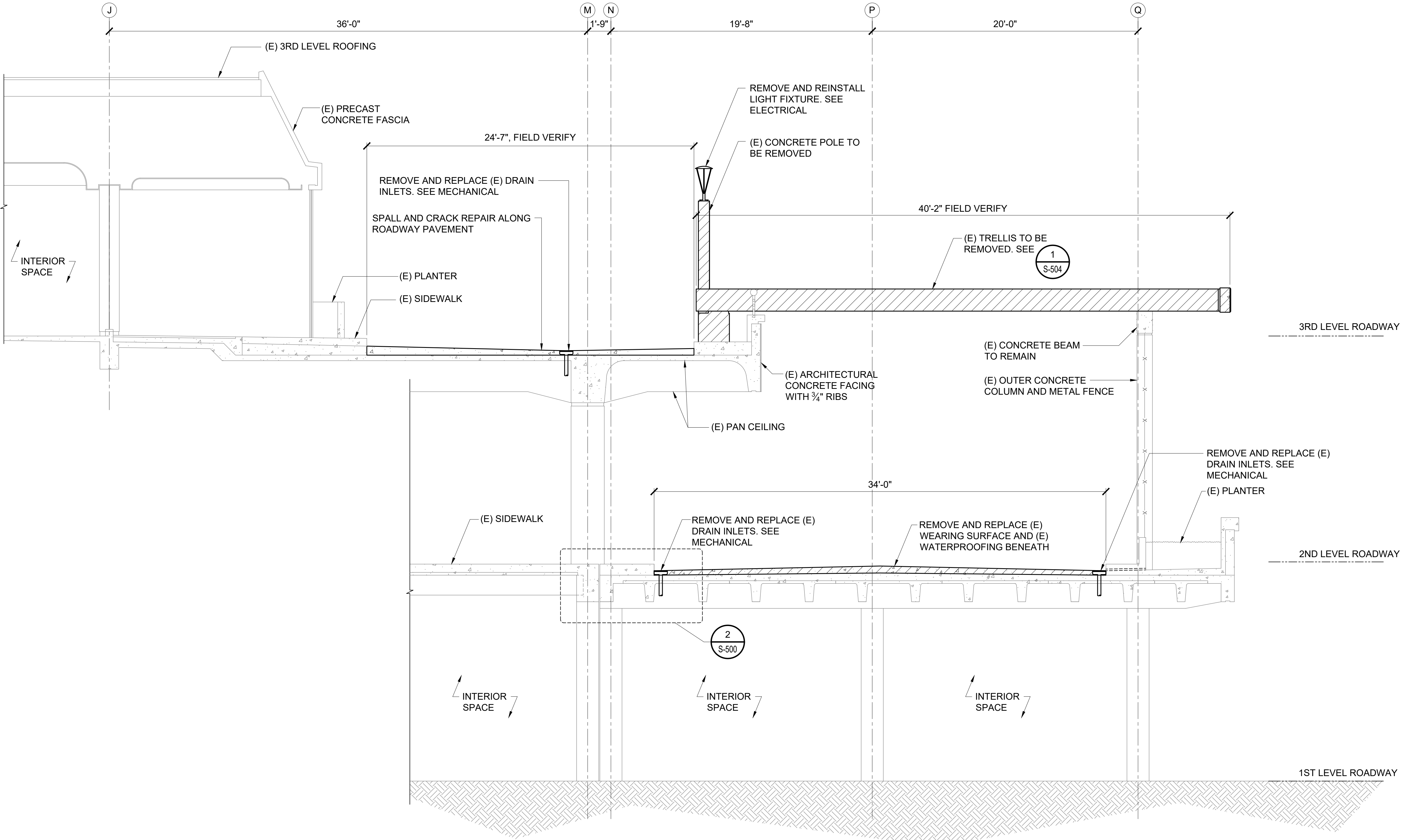


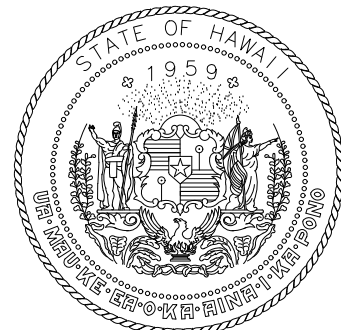
P:\S\151-5200\183 DOT Airports - 2nd and 3rd Level Roadway Improvements\004 Drawings\Structural\AutoCAD\_format\2022-09-14 Phase 1 - Prebid Changes\1-03 S-E-214 Ewa Demolition Sections.dwg, 9/20/2022 12:19:30 PM, mgoo



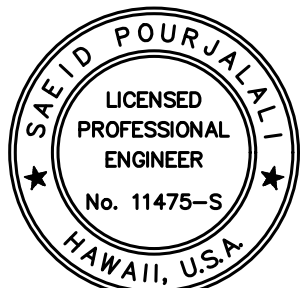
1 TYPICAL EWA ROADWAY DEMOLITION SECTION  
S-E-214 SCALE: 1/4" = 1'-0"



LEGEND:  
TO BE REMOVED



Airports Division  
DEPARTMENT OF TRANSPORTATION  
STATE OF HAWAII



*Saif Pourjalebi*  
04/30/2024  
Licensed Expiration Date

This work was prepared by me or under my supervision

| DSGN. | DRWN. | CHKD. | APPD. |
|-------|-------|-------|-------|
| MG    | MG    | SP    |       |

### KEY PLAN / NOTES:

| NO. | DATE | REVISIONS |
|-----|------|-----------|
|-----|------|-----------|

## CONSTRUCTION DOCUMENTS

SEPTEMBER, 2022  
DATE

PROJECT TITLE :

EWA AND DH CONCOURSE  
ROADWAY IMPROVEMENTS  
PHASE 1

AT  
DANIEL K. INOUE INTERNATIONAL AIRPORT  
HONOLULU, OAHU, HAWAII

PROJECT NO.:

AO1043-32

SHEET TITLE:

EWA TYPICAL  
DEMOLITION  
SECTION

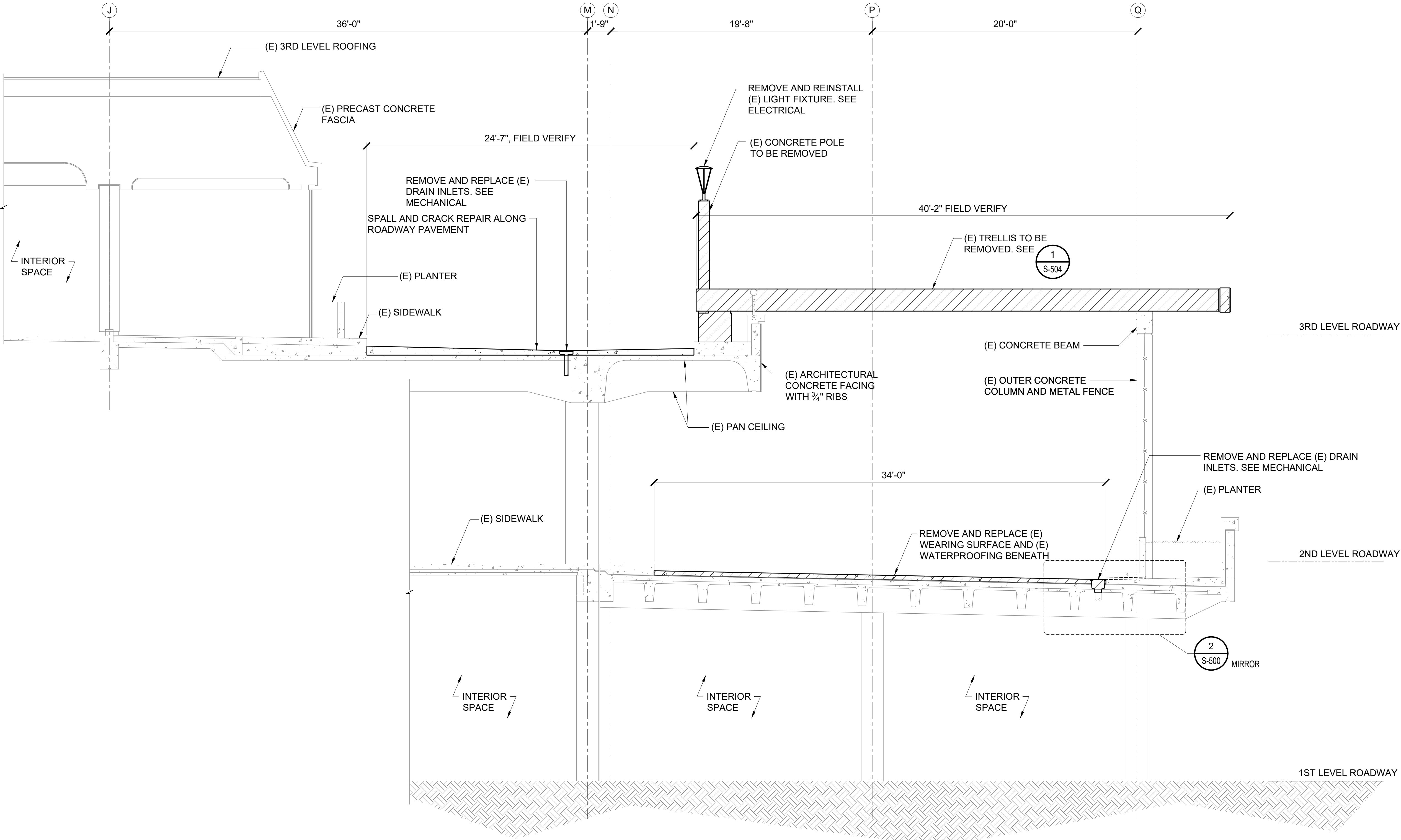
DATE :  
SEPTEMBER, 2022  
SHEET :

DWG. NO.

S-E-214

60 OF 247 SHEETS

P:\S\151-520\183 DOT Airports - 2nd and 3rd Level Roadway Improvements\004 Drawings\Structural\AutoCAD\_format\2022-09-14 Phase 1 - Prebid Changes\1-03 S-E-214 Ewa Demolition Sections.dwg, 9/20/2022 12:19:31 PM, mgoo



LEGEND:  
TO BE REMOVED

Airports Division  
DEPARTMENT OF TRANSPORTATION  
STATE OF HAWAII

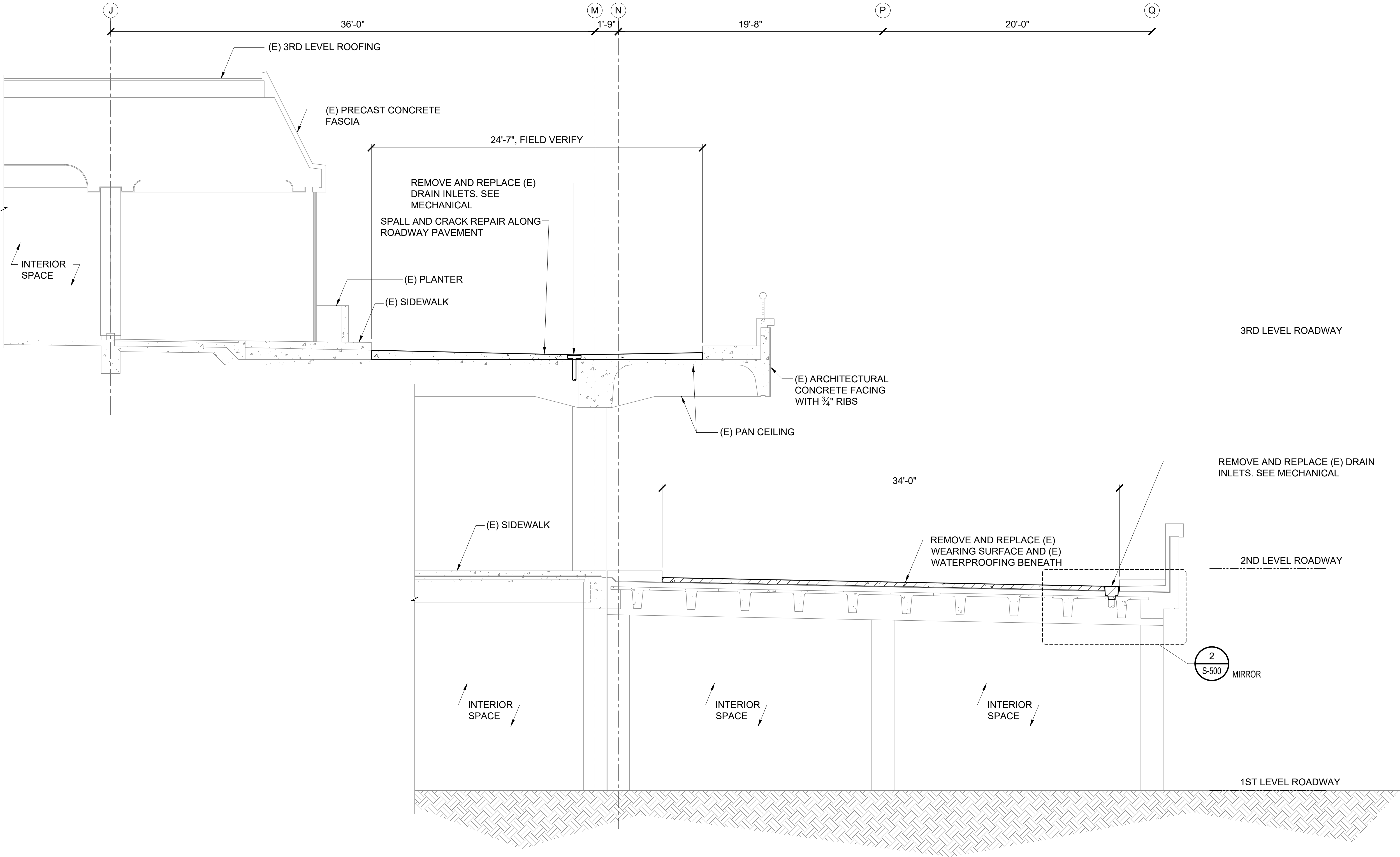
*Saif Pourjafari*  
04/30/2024  
Licensed Expiration Date  
This work was prepared by me or under my supervision

|       |       |       |       |
|-------|-------|-------|-------|
| DSGN. | DRWN. | CHKD. | APPD. |
| MG    | MG    | SP    |       |

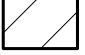
KEY PLAN / NOTES:

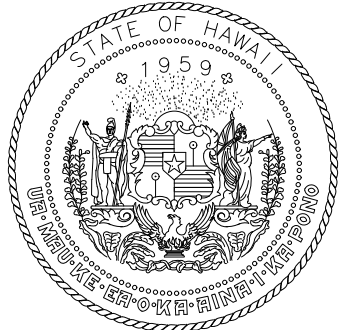
|   |          |           |
|---|----------|-----------|
| NO.   | DATE     | REVISIONS |
| <div>CONSTRUCTION DOCUMENTS</div> <div>SEPTEMBER, 2022<br/>DATE</div> |          |           |
| PROJECT TITLE :   |          |           |
| EWA AND DH CONCOURSE ROADWAY IMPROVEMENTS<br>PHASE 1                  |          |           |
| AT<br>DANIEL K. INOUE INTERNATIONAL AIRPORT<br>HONOLULU, OAHU, HAWAII |          |           |
| PROJECT NO.:  |          |           |
| AO1043-32   |          |           |
| SHEET TITLE:  |          |           |
| EWA TYPICAL DEMOLITION SECTION  |          |           |
| DATE :  | DWG. NO. |           |
| SEPTEMBER, 2022   | S-E-215  |           |
| SHEET :   |          |           |
| 61 OF 247 SHEETS  |          |           |

P:\S\151-520\183 DOT Airports - 2nd and 3rd Level Roadway Improvements\004 Drawings\Structural\AutoCAD\_format\2022-09-14 Phase 1 - Prebid Changes\1-03 S-E-214 Ewa Demolition Sections.dwg, 9/20/2022 12:19:31 PM, mgoo

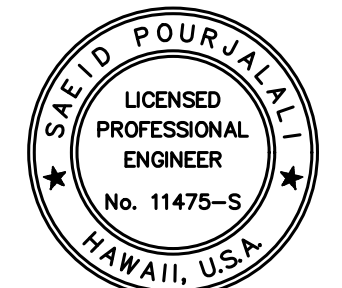


LEGEND:

TO BE REMOVED 



Airports Division  
DEPARTMENT OF TRANSPORTATION  
STATE OF HAWAII



*Saif Pourjalali*  
04/30/2024  
Licensed Expiration Date

This work was prepared by me or under my supervision

| DSGN. | DRWN. | CHKD. | APPD. |
|-------|-------|-------|-------|
| MG    | MG    | SP    |       |

KEY PLAN / NOTES:

| NO. | DATE | REVISIONS |
|-----|------|-----------|
|-----|------|-----------|

CONSTRUCTION DOCUMENTS

SEPTEMBER, 2022  
DATE

PROJECT TITLE :

EWA AND DH CONCOURSE  
ROADWAY IMPROVEMENTS  
PHASE 1

AT  
DANIEL K. INOUE INTERNATIONAL AIRPORT  
HONOLULU, OAHU, HAWAII

PROJECT NO.:

AO1043-32

SHEET TITLE:

EWA TYPICAL  
DEMOLITION  
SECTION

|                  |          |
|------------------|----------|
| DATE :           | DWG. NO. |
| SEPTEMBER, 2022  | S-E-216  |
| SHEET :          |          |
| 62 OF 247 SHEETS |          |

1 EWA ROADWAY DEMOLITION SECTION  
S-E-216  
SCALE: 1/4" = 1'-0"

