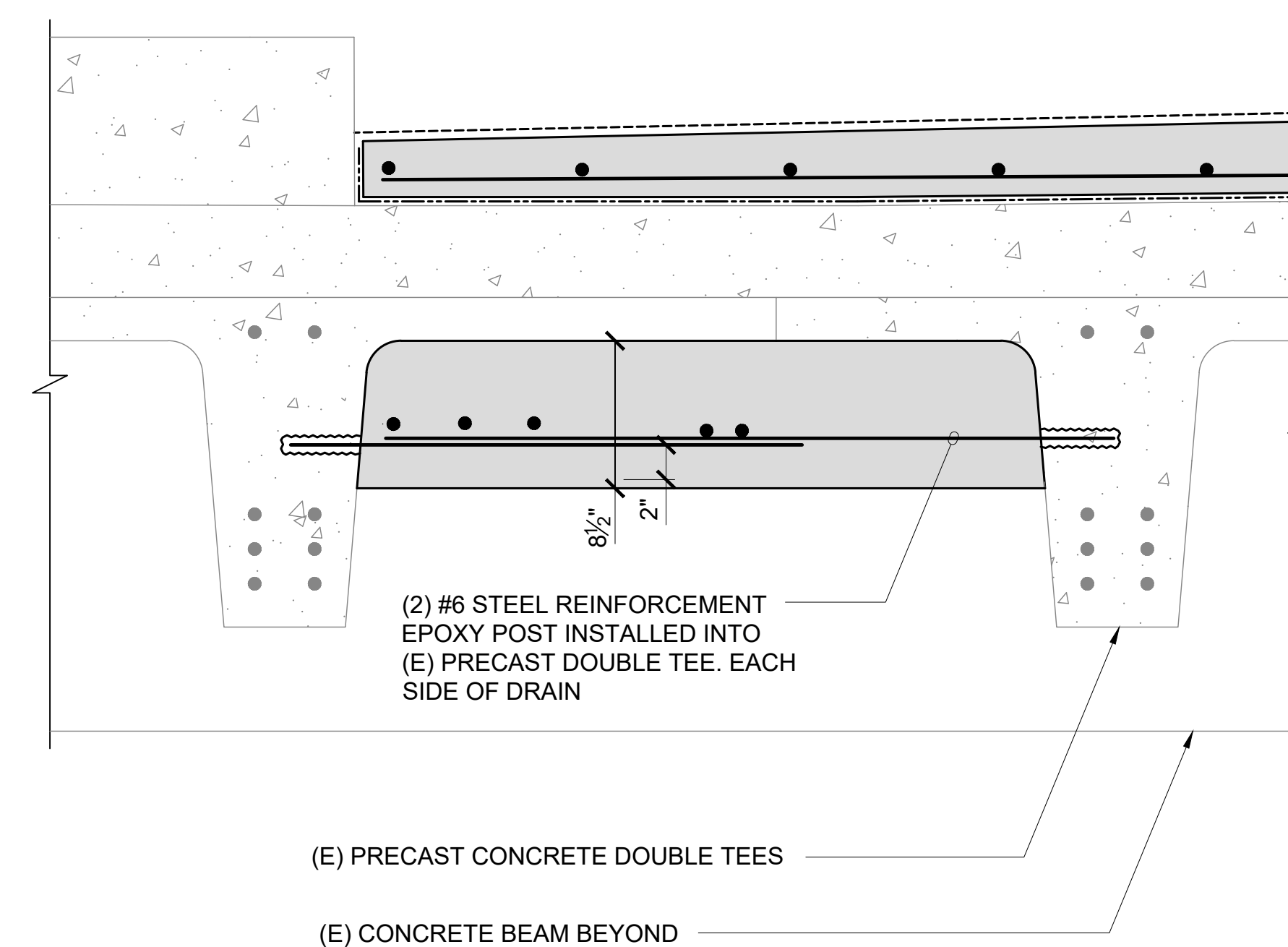


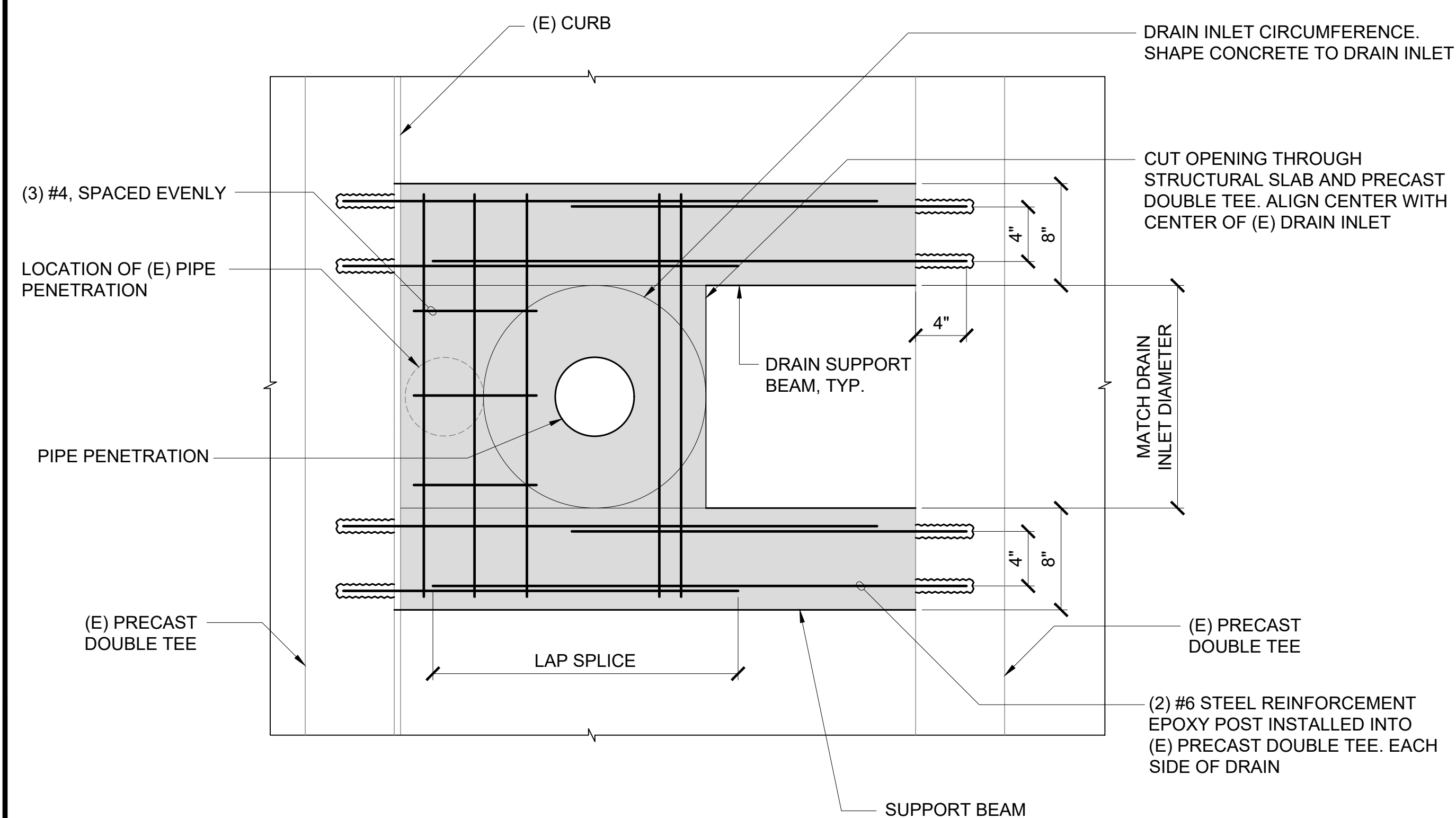
(A) DETAIL AT DRAIN



(B) DETAIL AT DRAIN SUPPORT BEAM

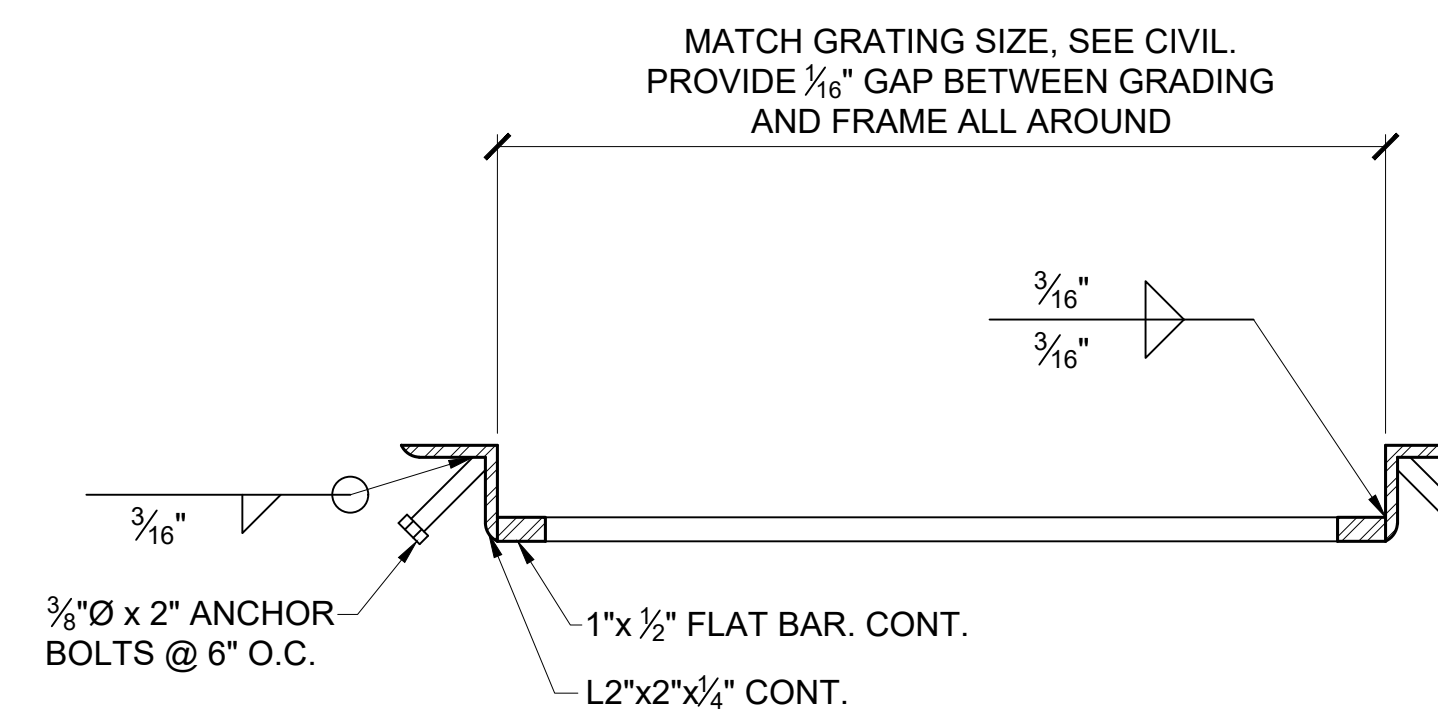
EWA AND DH LEVEL 2 DRAIN PENETRATION DETAIL

SCALE: 1 1/2" = 1'-0"



EWA AND DH LEVEL 2 DRAIN PENETRATION REBAR LAYOUT

SCALE: 1 1/2" = 1'-0"

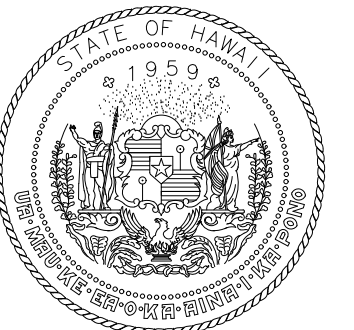


NOTE:

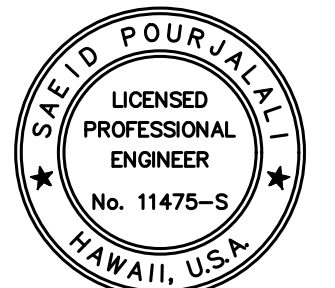
1. STEEL SHALL BE ASTM A-36
2. HOT DIP GALVANIZE AFTER FABRICATION PER ASTM A-123.

DRAIN GRATE FRAMING SECTION

NOT TO SCALE



Airports Division
DEPARTMENT OF TRANSPORTATION
STATE OF HAWAII



Saeed Panchgiri

04/30/2024

Licensed Expiration Date

This work was prepared by me or under my supervision

DSGN.	DRWN.	CHKD.	APPD.
MG	MG	SP	

KEY PLAN / NOTES:

NO.	DATE	REVISIONS

CONSTRUCTION DOCUMENTS

SEPTMBER, 2022

DATE

PROJECT TITLE :

EWA AND DH CONCOURSE ROADWAY IMPROVEMENTS PHASE 1

AT
DANIEL K. INOUE INTERNATIONAL AIRPORT
HONOLULU, OAHU, HAWAII

PROJECT NO.:

AO1043-32

SHEET TITLE:

EWA AND DH SECOND LEVEL DRAIN REPAIR

DATE :	DWG. NO. S-402
SEPTEMBER, 2022	
SHEET :	
32 OF 247 SHEETS	