

MECHANICAL LEGEND AND SYMBOLS:

Bel	Below
Conc.	Concrete
Cont.	Continuous
Cotg	Clean-Out-To-Grade
Cw	Cold Water
Cv	Check Valve
Det	Detail
Dn	Down
Dwg	Drawing
Ea	Each
(E)	Existing
Flr	Floor
Ft	Feet
Fu	Fixture Unit
Gal	Gallon
Grd	Grade
Gpm	Gallons Per Minute
Hb	Hose Bibb
Hp	Horsepower
Rpm	Revolutions Per Minute
Sht	Sheet
Sstl	Stainless Steel
Sq. Hd.	Square Head Cock
Typ	Typical
Vt	Vent
W/	With
	Check Valve
	Ball Valve

EQUIPMENT SCHEDULE

Water Treatment System (WTS):

Automated Wastewater Treatment & Recycling System To Remove Suspended Solids, Emulsified Oils And Heavy Metals To Support Recycling Or Sanitary Sewer Discharge Of Pressure Washer Applications. Unit Shall Be Skid Mounted With Insulated And Removable Side Panels With Quick-release Latches. Cabinet Steel Panels Shall Have Zinc Epoxy Coat Finish And Has Hinged Protective Doors With Lock. Internal Water Tank Shall Be Made Of Stainless Steel And Have Sloped Floors And Automatic Purge System. Unit Shall Be Complete With Sump Pump, EC1 Plus Solution, Conductivity Solution, Ozone Generator, Ozone Pump, Cyclone Mixer, Sludge Skimmer, Conductivity Pump, And Automatic Controls.

Provide Electric Powered Cold Water Pressure Washer, 5 HP At 3.4 GPM AT 2000 PSI And Shall Be Prewired And Pre-plumbed Inside Cabinet.

Provide Sump Pit Holding Tank With Hinged Cover, Sludge Tank With Screen, Pump Float Switch.

Capacity:

Filtration Rate: Up To 5 GPM.

Electrical Requirements: 55 Amps, 230-1-60.

Manufacturer: Water Maze Model EC1-300A Or Approved Equal.

Sump Pump (SP-1):

Submersible Type With Float Control, Stainless Steel Motor Housing, Oil Filled Motor, Vortex Impeller Capable Of Passing 2-Inch Diameter Solids, Stainless Steel Pump Housing, Stainless Steel Shaft, Automatic Reset Thermal Protection, Maximum 20 Starts Per Hour and UL listed.

Capacity: 10 GPM AT 20 FT Head.

Electrical Requirements: 1/2 HP, 3.0 Amps, 230-1-60.

Manufacturer: Ebara 50DWXU6.4 Or Approved Equal.

FED. ROAD DIST. NO.	STATE	PROJ. NO.	FISCAL YEAR	SHEET NO.	TOTAL SHEETS
HAWAII	HAW.	HWY-0-09-06	2008	41	46

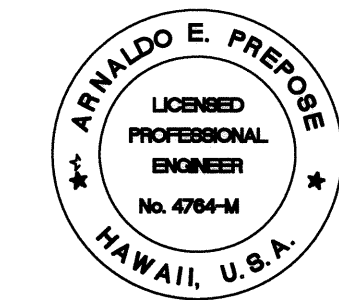
DATE	_____
DESIGNED BY	_____
TRACED BY	_____
DESIGNED BY	_____
QUANTITIES BY	_____
CHECKED BY	_____
ORIGINAL PLAN	_____
NOTE BOOK	_____
No.	_____

REVISED ORDINANCES OF HONOLULU
CHAPTER 32
BUILDING ENERGY EFFICIENCY STANDARDS

THE BUILDING ENERGY EFFICIENCY STANDARDS HAVE BEEN
REVIEWED AND TO THE BEST OF MY KNOWLEDGE THIS
DESIGN SUBSTANTIALLY CONFORMS TO THE MECHANICAL
REQUIREMENTS OF SECTIONS 8.3, 9.3, 10.3, 12.3.

Signature _____
ARNALDO E. PREPOSE
Name (Print)
Principal Mechanical Engineer
Title
4764-M
PE or Arch. License No.

ARNALDO E. PREPOSE
LICENSED
PROFESSIONAL
ENGINEER
No. 4764-M
HAWAII, U.S.A.



EXPIRATION DATE OF THE LICENSE 4/30/2010
THIS WORK WAS PREPARED BY
ME OR UNDER MY SUPERVISION

STATE OF HAWAII
DEPARTMENT OF TRANSPORTATION
HIGHWAYS DIVISION

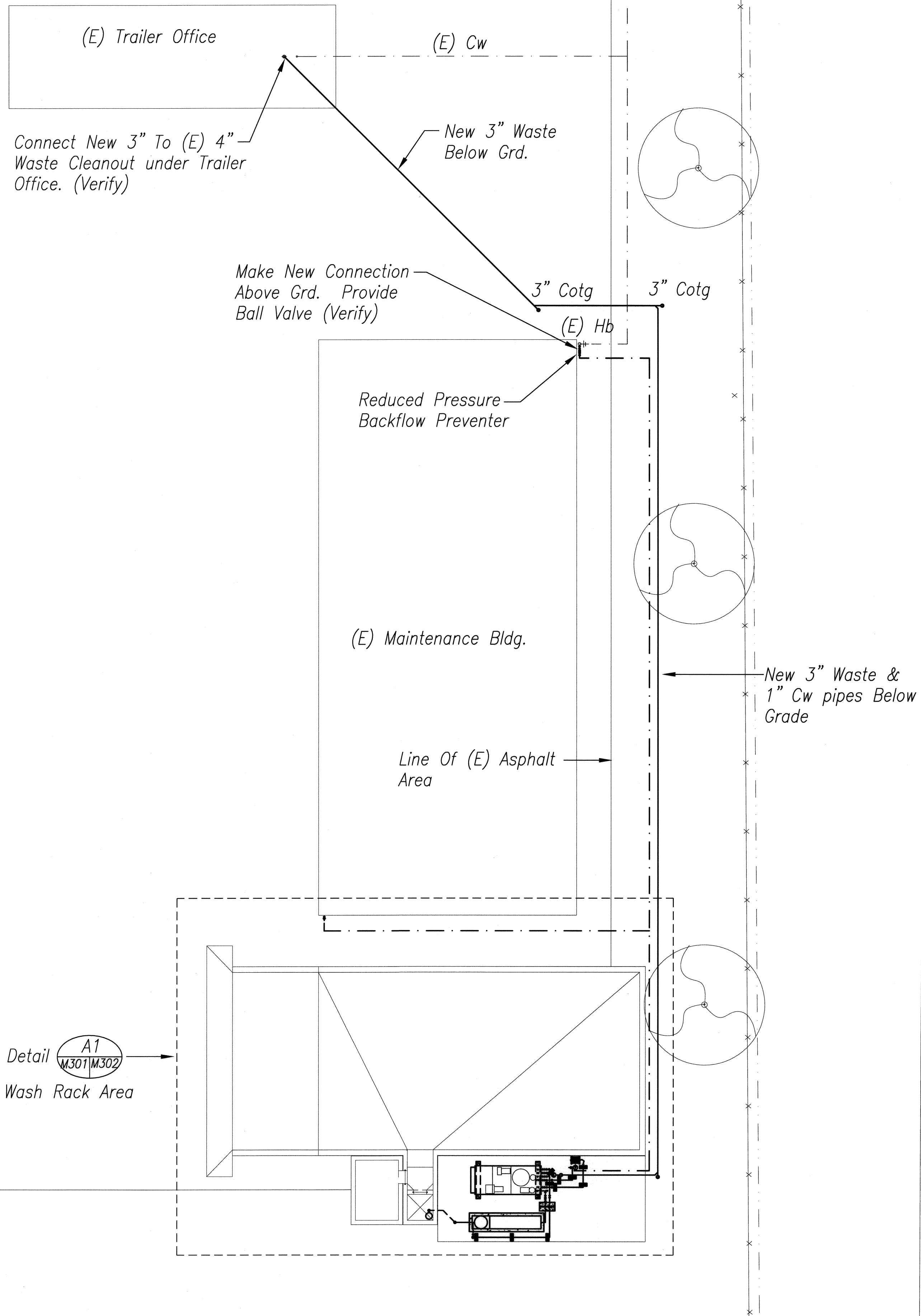
**WAIANAE BASEYARD
MECHANICAL PLAN**

KANEOHE, PEARL CITY AND WAIANAE
BASEYARD WASHDOWN RACKS
Project No. HWY-0-09-06

Scale: NOT APPLICABLE Date: MAY 2008

SHEET No. M-300 OF 46 SHEETS

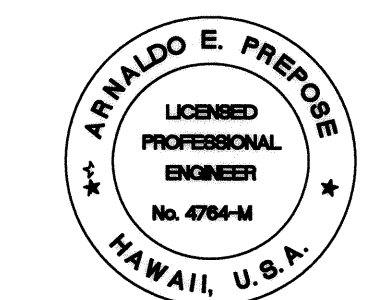
FED. ROAD DIST. NO.	STATE	PROJ. NO.	FISCAL YEAR	SHEET NO.	TOTAL SHEETS
HAWAII	HAW.	HWY-0-09-06	2008	42	46



A1
M301/M302

MECHANICAL SITE PLAN
1/8" = 1'-0"

DATE	_____
DESIGNED BY	_____
TRACED BY	_____
NOTE BOOK	_____
QUANTITIES BY	_____
CHECKED BY	_____
No.	_____



EXPIRATION DATE OF THE LICENSE 4/30/2010
THIS WORK WAS PREPARED BY
ME OR UNDER MY SUPERVISION

STATE OF HAWAII
DEPARTMENT OF TRANSPORTATION
HIGHWAYS DIVISION

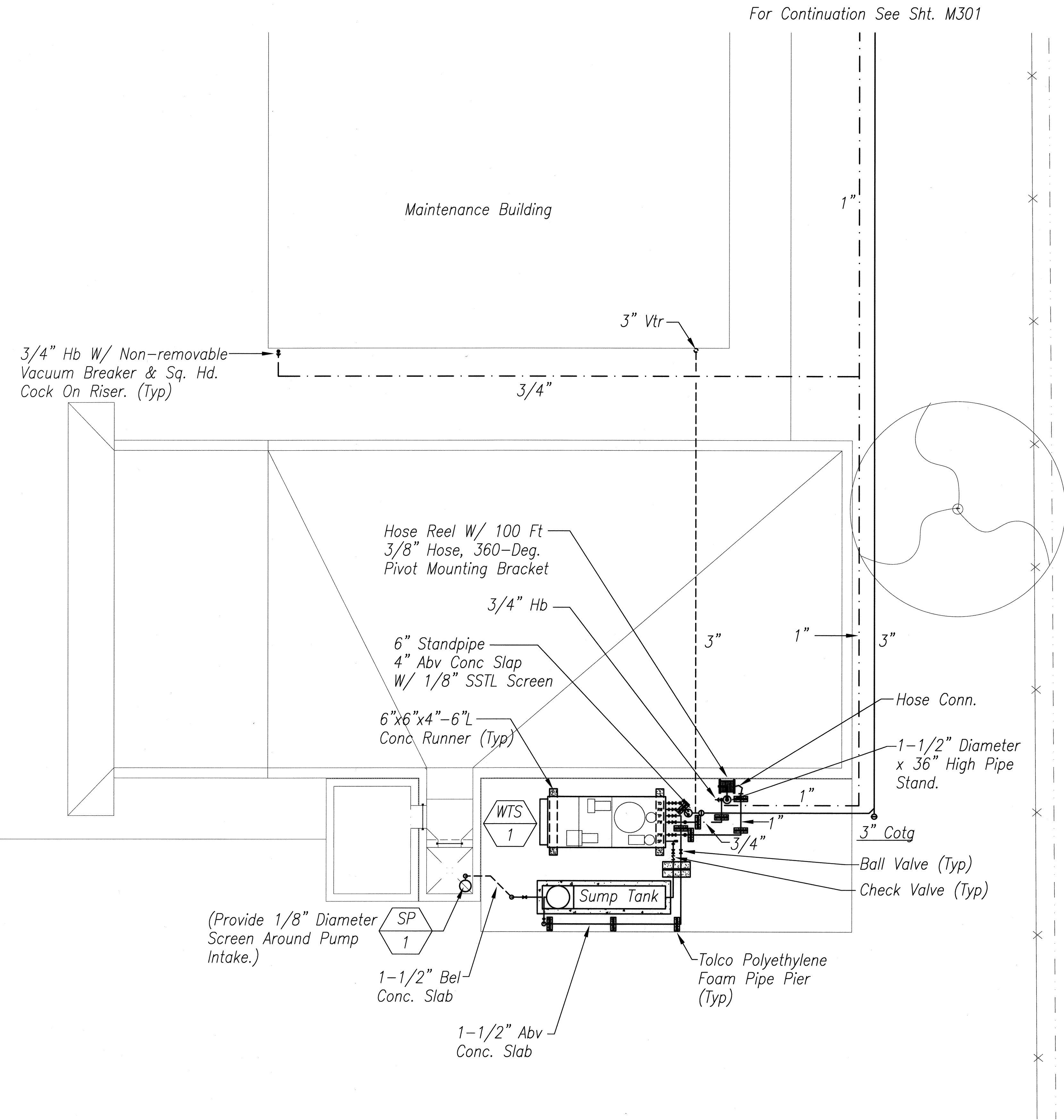
**WAIANAE BASEYARD
MECHANICAL PLAN**

KANEOHE, PEARL CITY AND WAIANAE
BASEYARD WASHDOWN RACKS
Project No. HWY-0-09-06

Scale: 1/8" = 1'-0" Date: MAY 2008

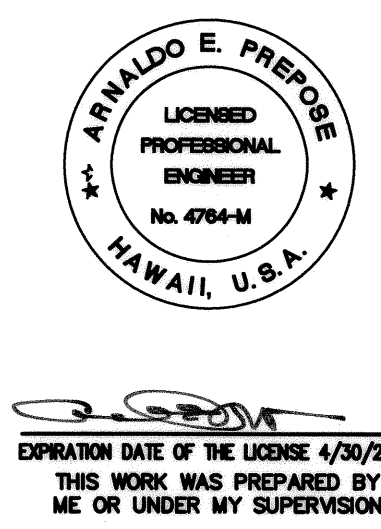
SHEET No. M-301 OF 46 SHEETS

FED. ROAD DIST. NO.	STATE	PROJ. NO.	FISCAL YEAR	SHEET NO.	TOTAL SHEETS
HAWAII	HAW.	HWY-0-09-06	2008	43	46



A1
M301M302
WASH RACK MECHANICAL PLAN
1/4" = 1'-0"

DATE	_____
DESIGNED BY	_____
CHECKED BY	_____
NOTED BY	_____
NO.	_____



STATE OF HAWAII
DEPARTMENT OF TRANSPORTATION
HIGHWAYS DIVISION

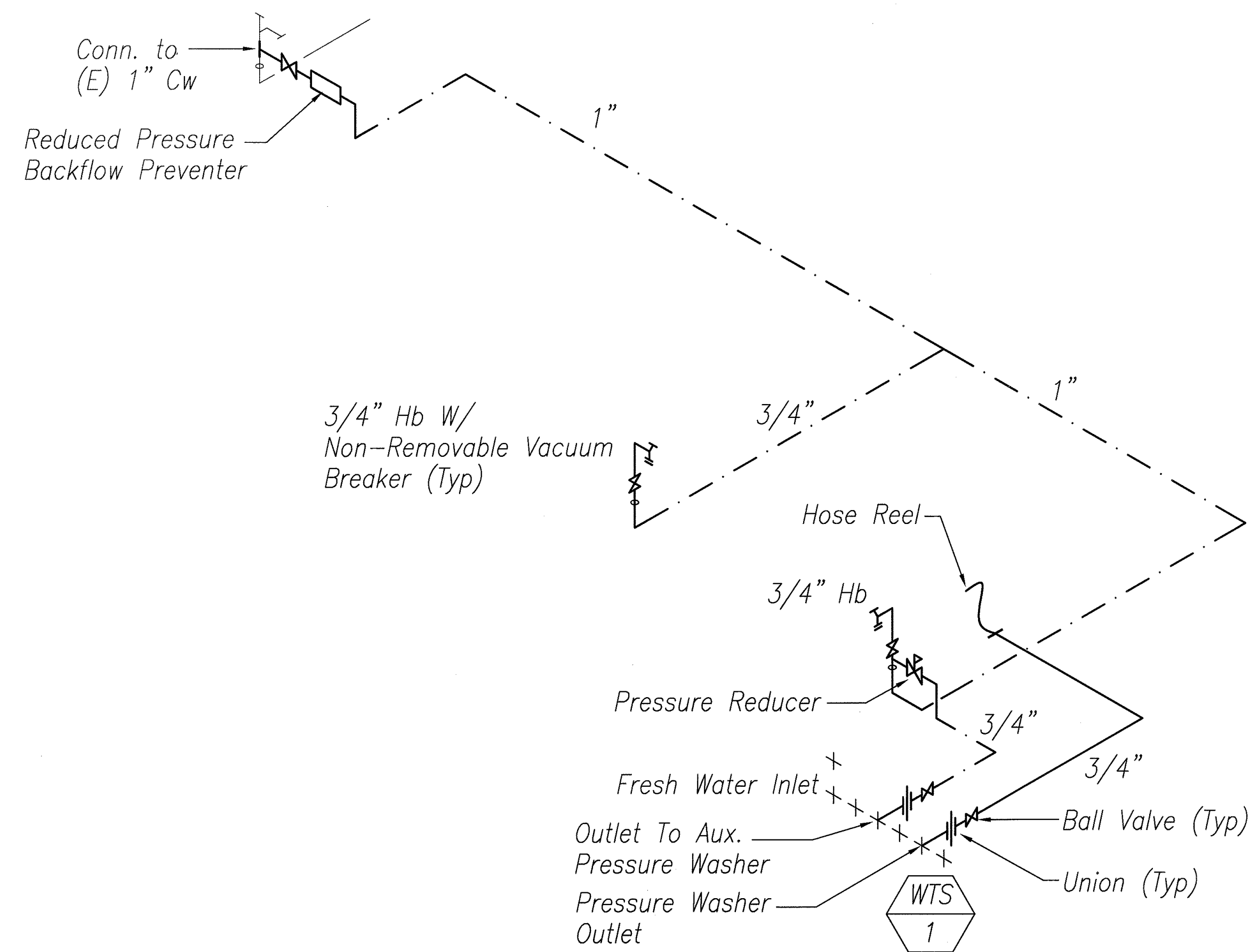
**WAIANAE BASEYARD
MECHANICAL PLAN**

KANELOHE, PEARL CITY AND WAIANAE
BASEYARD WASHDOWN RACKS
Project No. HWY-0-09-06

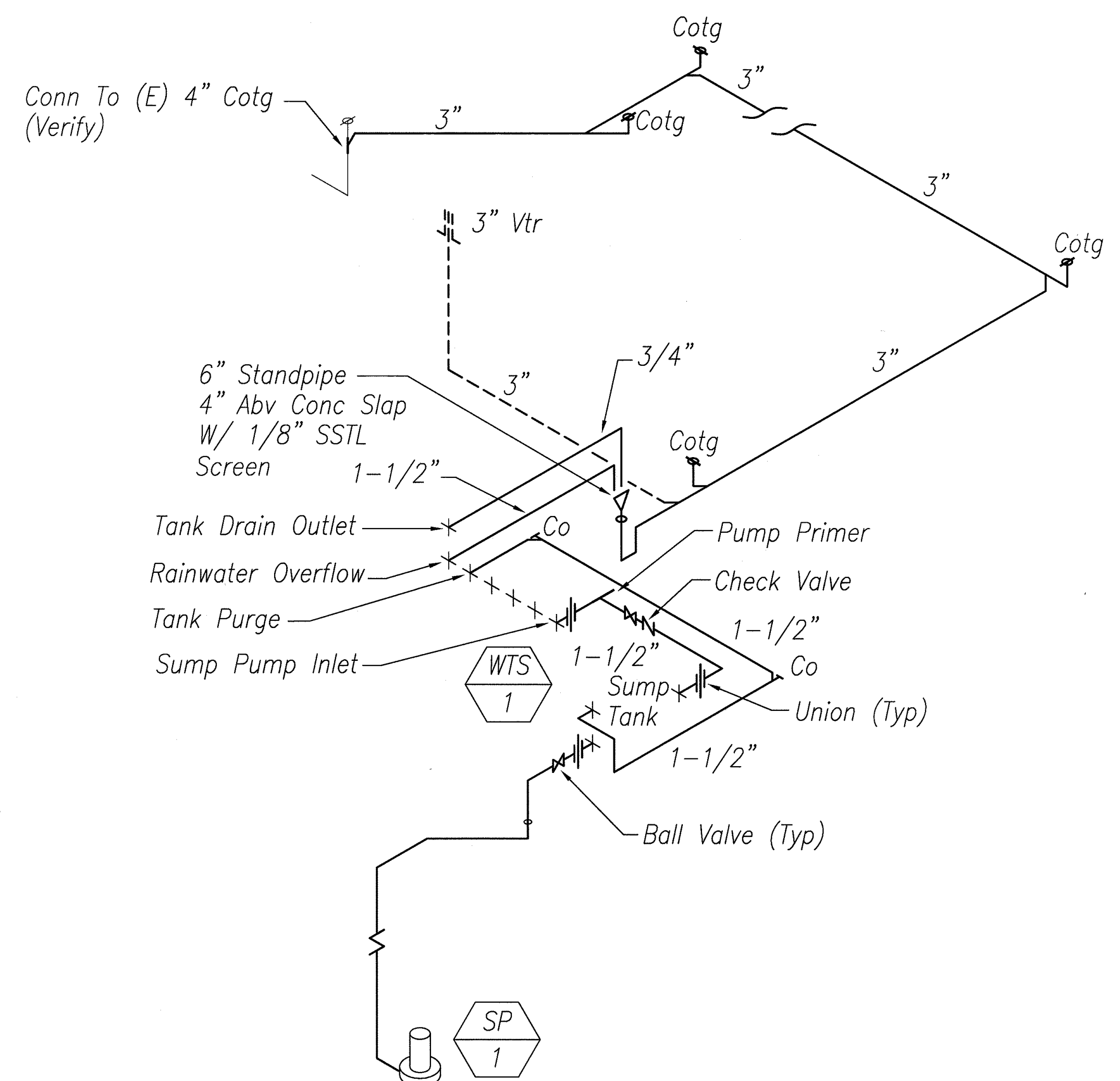
Scale: 1/4" = 1'-0" Date: MAY 2008

SHEET No. M-302 OF 46 SHEETS

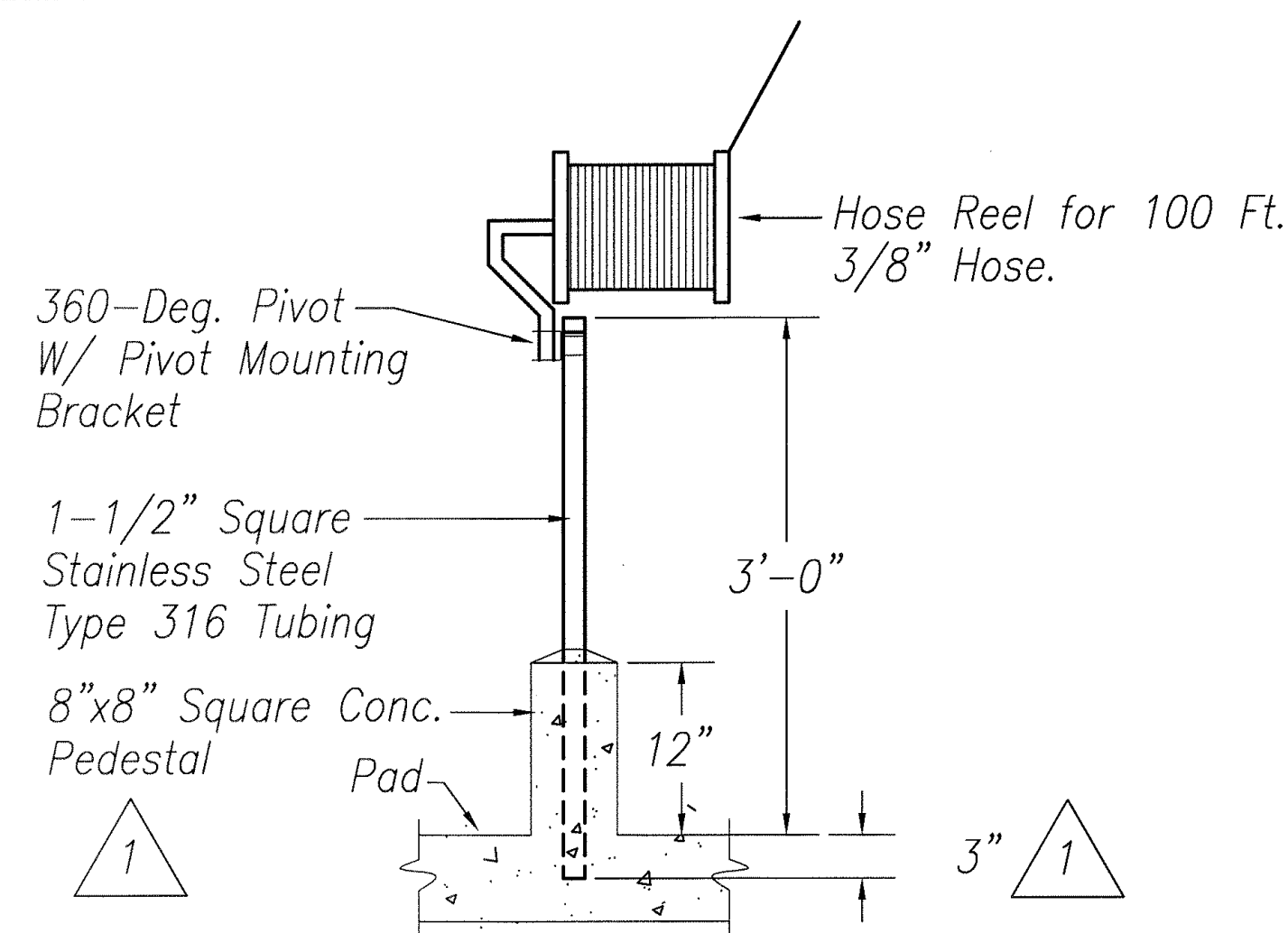
FED. ROAD DIST. NO.	STATE	PROJ. NO.	FISCAL YEAR	SHEET NO.	TOTAL SHEETS
HAWAII	HAW.	HWY-0-09-06	2008	ADD.44	46



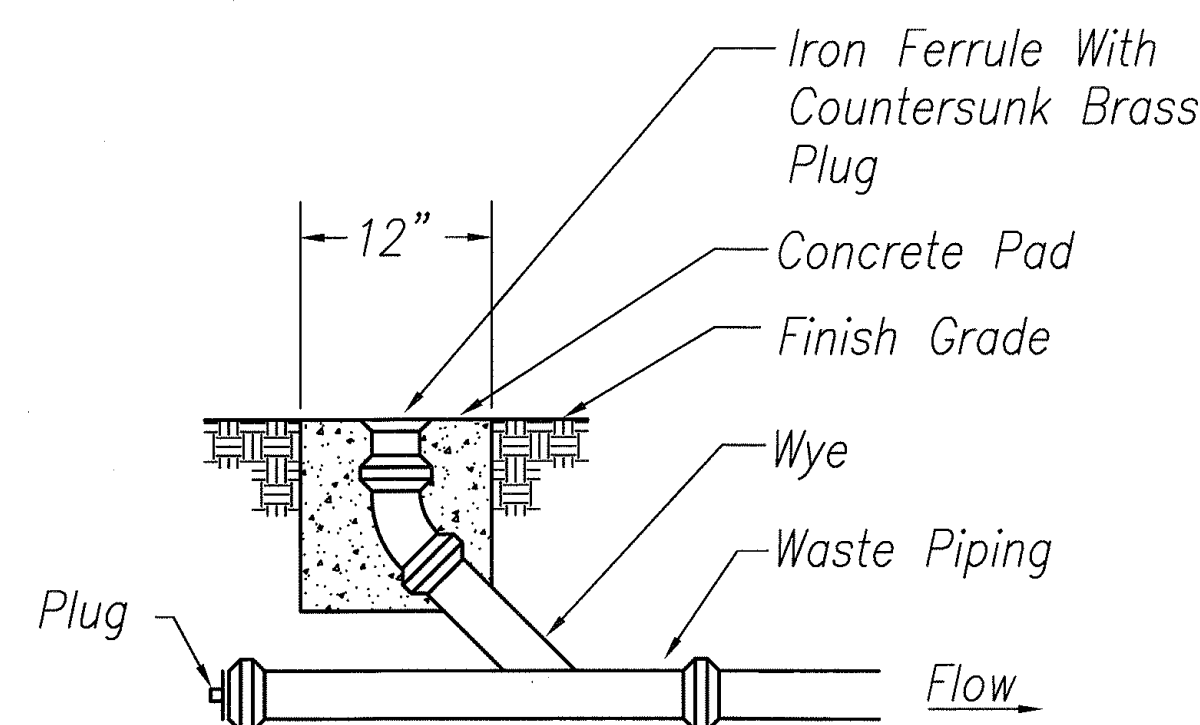
B1 WASH RACK WATER PIPING DIAGRAM
No Scale



B2 WASH RACK WASTE PIPING DIAGRAM
No Scale

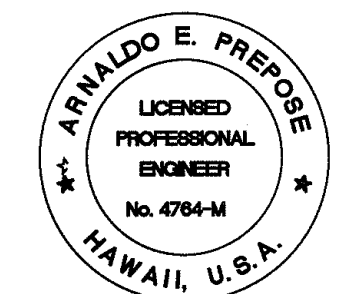


A1 HOSE REEL DETAIL
No Scale



A2 CLEANOUT TO GRADE DETAIL
No Scale

DATE
SURVEY PLATTED BY
DESIGNED BY
TRACED BY
NOTE BOOK
QUANTITIES BY
CHECKED BY
No.



EXPIRATION DATE OF THE LICENSE 4/30/2010
THIS WORK WAS PREPARED BY
ME OR UNDER MY SUPERVISION

6/12/08	1 Revised Hose Reel Detail
DATE	REVISION

STATE OF HAWAII
DEPARTMENT OF TRANSPORTATION
HIGHWAYS DIVISION
**WAIANAE BASEYARD
MECHANICAL PLAN**
KANEOME, PEARL CITY AND WAIANAE
BASEYARD WASHDOWN RACKS
Project No. HWY-0-09-06
Scale: NO SCALE Date: MAY 2008

SHEET No. M-303 OF 46 SHEETS

ADD.44