

MECHANICAL LEGEND AND SYMBOLS:

| | |
|---|------------------------|
| Bel | Below |
| Conc. | Concrete |
| Cont. | Continuous |
| Cotg | Clean-Out-To-Grade |
| Cw | Cold Water |
| Cv | Check Valve |
| Det | Detail |
| Dn | Down |
| Dwg | Drawing |
| Ea | Each |
| (E) | Existing |
| Flr | Floor |
| Ft | Feet |
| Fu | Fixture Unit |
| Gal | Gallon |
| Grd | Grade |
| Gpm | Gallons Per Minute |
| Hb | Hose Bibb |
| Hp | Horsepower |
| Rpm | Revolutions Per Minute |
| Sht | Sheet |
| Sstl | Stainless Steel |
| Sq. Hd. | Square Head Cock |
| Typ | Typical |
| Vt | Vent |
| W/ | With |
|  | Check Valve |
|  | Ball Valve |

EQUIPMENT SCHEDULE

Water Treatment System (WTS-2):

Automated Wastewater Treatment & Recycling System To Remove Suspended Solids, Emulsified Oils And Heavy Metals To Support Recycling Or Sanitary Sewer Discharge Of Pressure Washer Applications. Unit Shall Be Skid Mounted on A Stainless Steel Frame and Railing. Unit Shall Have A 600 Gallon Cone Bottom Pre-treatment Tank With Coalescing Oil Separator Plates And Oil Skimmer, Multimedia Filter, Carbasorb Filter, Sump, Filter And Transfer Pumps, Ozone Generator, Holding Tanks, Automatic Digital Controls in Stainless Steel Cabinet and Sludge Disposal System. Tanks Shall Be Polyethylene. Provide Polyethelene Sludge Tank. Sump Pump Shall Be Mounted In Pit With Three Float Controller To Be Interlocket To Main Controller; Pump Shall Be Stainless Steel Ebara 50DWXU6.4, 1/2 Hp, 3.0 Amps, 230-1-60.

Provide Oxidation Reduction Potential (ORP) And pH Advanced Digital Controller With Two Pumps And Controllers.

Provide Stainless Steel Platform And Railings.

Provide 55 Gallons Of Bacticide and Ondeo Naico With PVC Secondary Spill Platform for Chemical Containers.

Capacity:
Filtration Rate: Up To 30.0 GPM.

Electrical Requirements: 30 Amps, 230-1-60.

Manufacturer: Water Maze Model CLP-7033 Or Approved Equal.

Pressure Washer (PW-1):

Stationary Electric-Powered Cold Water Pressure Washer With Industrial Grade Motor Connected To A Oil-Bath High Pressure Pump, Dual Heat Dissipating V-Clogged Belt Pulleys, Heavy Duty Stainless Steel Cabinet On Four Rubber Feet, Inlet Filter, Time Delay Shutdown, Auto Start From Trigger Gun, 36 Ft. Electrical Cord With GFCI, Thermal Pump Protector, Detergent Attachment,

Provide Insulated Fatigue Free, Spring Loaded 5000 PSI Trigger Gun With Stainless Steel, Variabel Pressure Wand, And Four Quick Couple Color Coded Nozzles For Selection Of Spray Patterns.

Capacity: 4.2 GPM At 3000 PSI

Electrical Requirements: 6.2 Hp,28 Amps, 230-1-60.

Manufacturer: Landa Model SEA4-20024A Or Approved Equal.

Sump Pump (SP-1):

Submersible Type With Float Control, Stainless Steel Motor Housing, Oil Filled Motor, Vortex Impeller Capable Of Passing 2-Inch Diameter Solids, Stainless Steel Pump Housing, Stainless Steel Shaft, Automatic Reset Thermal Protection, Maximum 20 Starts Per Hour and UL listed.

Capacity: 10 GPM AT 20 FT Head.

Electrical Requirements: 1/2 HP, 3.0 Amps, 230-1-60.

Manufacturer: Ebara 50DWXU6.4 Or Approved Equal.

| FED. ROAD DIST. NO. | STATE | PROJ. NO. | FISCAL YEAR | SHEET NO. | TOTAL SHEETS |
|---------------------|-------|-------------|-------------|-----------|--------------|
| HAWAII | HAW. | HWY-0-09-06 | 2008 | 28 | 46 |

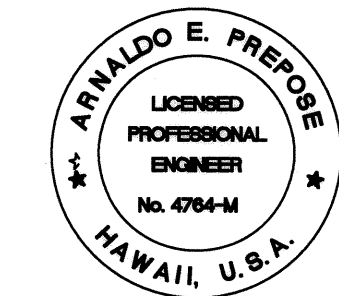
| | |
|---------------|---------------|
| DATE | DATE |
| DESIGNED BY | DESIGNED BY |
| TRACED BY | TRACED BY |
| NOTE BOOK | NOTE BOOK |
| QUANTITIES BY | QUANTITIES BY |
| CHECKED BY | CHECKED BY |
| ORIGINAL PLAN | ORIGINAL PLAN |
| No. | No. |

REVISED ORDINANCES OF HONOLULU
CHAPTER 32
BUILDING ENERGY EFFICIENCY STANDARDS

THE BUILDING ENERGY EFFICIENCY STANDARDS HAVE BEEN
REVIEWED AND TO THE BEST OF MY KNOWLEDGE THIS
DESIGN SUBSTANTIALLY CONFORMS TO THE MECHANICAL
REQUIREMENTS OF SECTIONS 8.3, 9.3, 10.3, 12.3.

Signature
ARNALDO E. PREPOSE
Name (Print)
Principal Mechanical Engineer
Title
4764-M
PE or Arch. License No.

ARNALDO E. PREPOSE
LICENSED PROFESSIONAL ENGINEER
No. 4764-M
HAWAII, U.S.A.



EXPIRATION DATE OF THE LICENSE 4/26/2010
THIS WORK WAS PREPARED BY
ME OR UNDER MY SUPERVISION

STATE OF HAWAII
DEPARTMENT OF TRANSPORTATION
HIGHWAYS DIVISION

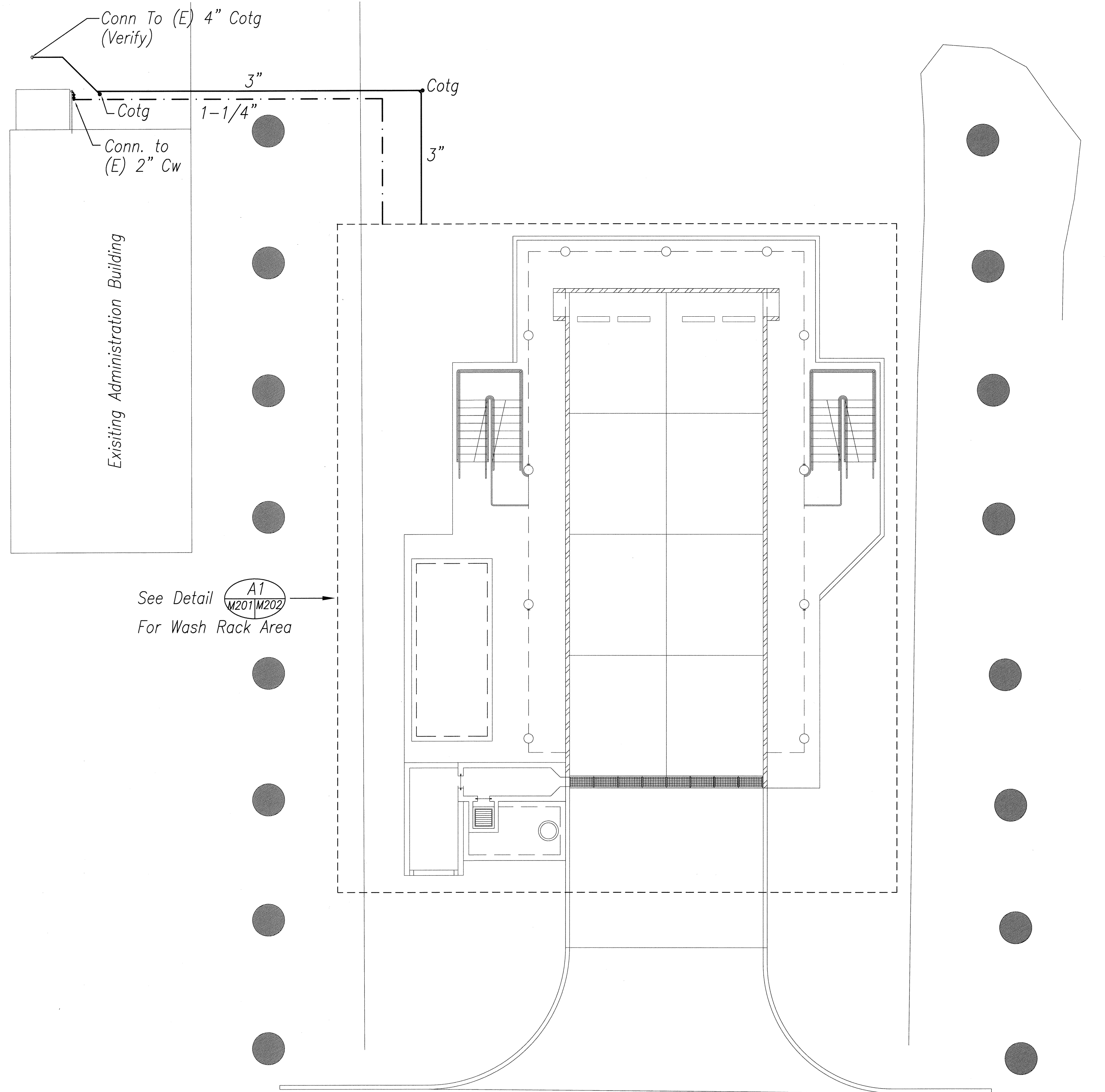
**PEARL CITY BASEYARD
MECHANICAL PLAN**

KANEOHE, PEARL CITY AND WAIANAE
BASEYARD WASHDOWN RACKS
Project No. HWY-0-09-06

Scale: NOT APPLICABLE Date: MAY 2008

SHEET No. M-200 OF 46 SHEETS

| FED. ROAD DIST. NO. | STATE | PROJ. NO. | FISCAL YEAR | SHEET NO. | TOTAL SHEETS |
|---------------------|-------|-------------|-------------|-----------|--------------|
| HAWAII | HAW. | HWY-0-09-06 | 2008 | 29 | 46 |



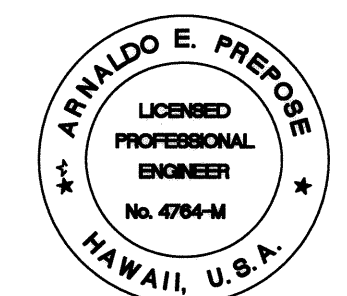
S ROAD

A1
M201/M202

MECHANICAL SITE PLAN

1/8" = 1'-0"

| | |
|---------------|-------|
| DATE | _____ |
| DESIGNED BY | _____ |
| TRACED BY | _____ |
| NOTE BOOK | _____ |
| QUANTITIES BY | _____ |
| CHECKED BY | _____ |
| No. | _____ |



EXPIRATION DATE OF THE LICENSE 4/30/2010
THIS WORK WAS PREPARED BY
ME OR UNDER MY SUPERVISION

STATE OF HAWAII
DEPARTMENT OF TRANSPORTATION
HIGHWAYS DIVISION

**PEARL CITY BASEYARD
MECHANICAL PLAN**

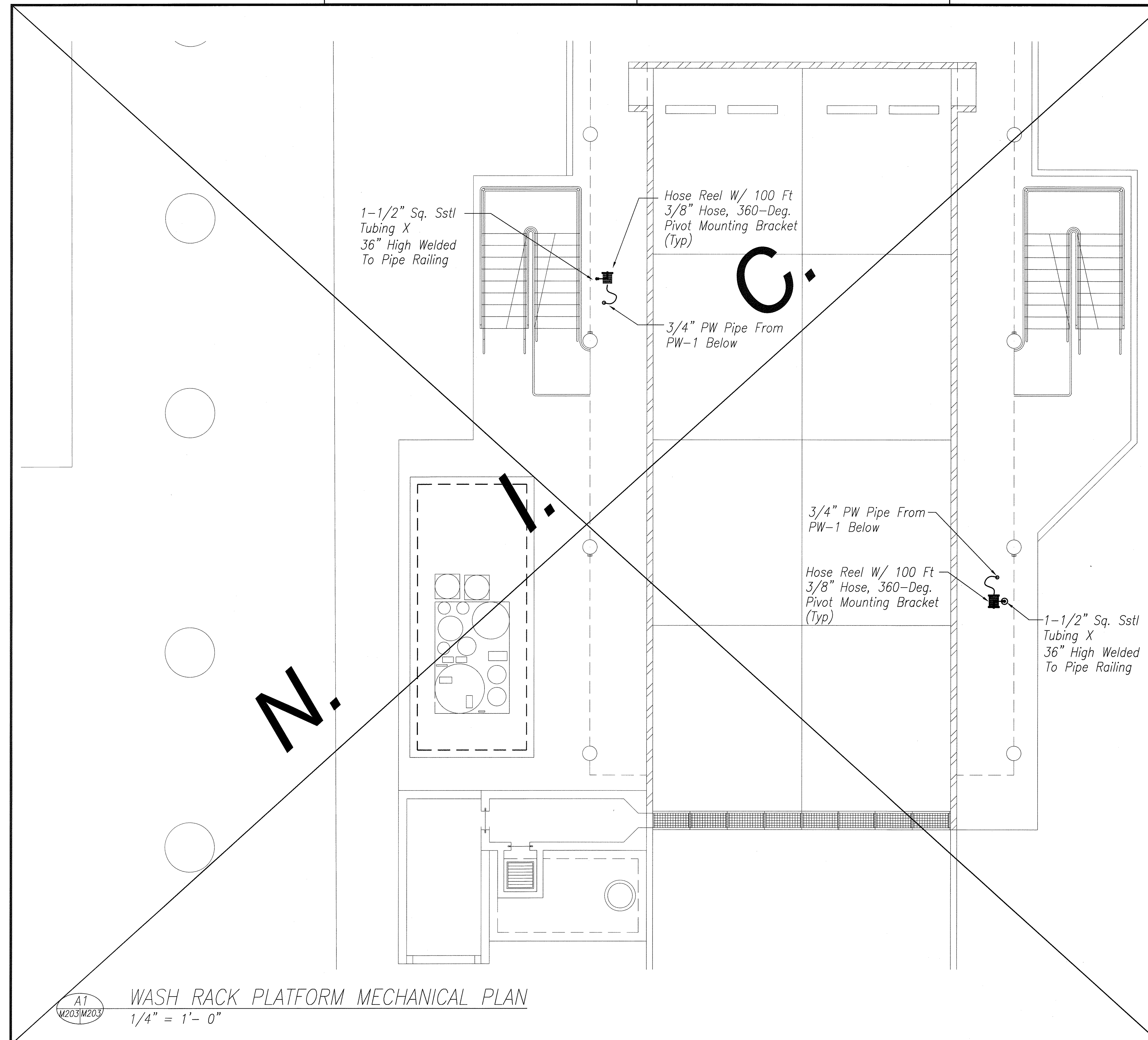
KANEOHE, PEARL CITY AND WAIANAE
BASEYARD WASHDOWN RACKS

Project No. HWY-0-09-06

Scale: 1/8" = 1'-0" Date: MAY 2008

SHEET No. M-201 OF 46 SHEETS

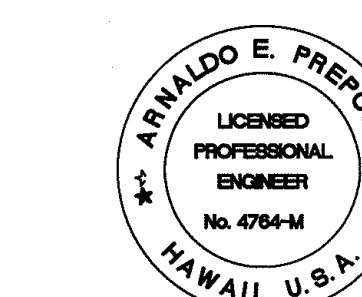
| FED. ROAD DIST. NO. | STATE | PROJ. NO. | FISCAL YEAR | SHEET NO. | TOTAL SHEETS |
|---------------------|-------|-------------|-------------|-----------|--------------|
| HAWAII | HAW. | HWY-0-09-06 | 2008 | ADD.31 | 46 |



| | |
|-------------------|------|
| SURVEY PLOTTED BY | DATE |
| DRAWN BY | |
| DESIGNED BY | |
| QUANTITIES BY | |
| CHECKED BY | |
| ORIGINAL PLAN | |
| NOTE BOOK | |
| No. | |

A1
M203/M203

WASH RACK PLATFORM MECHANICAL PLAN
1/4" = 1'-0"



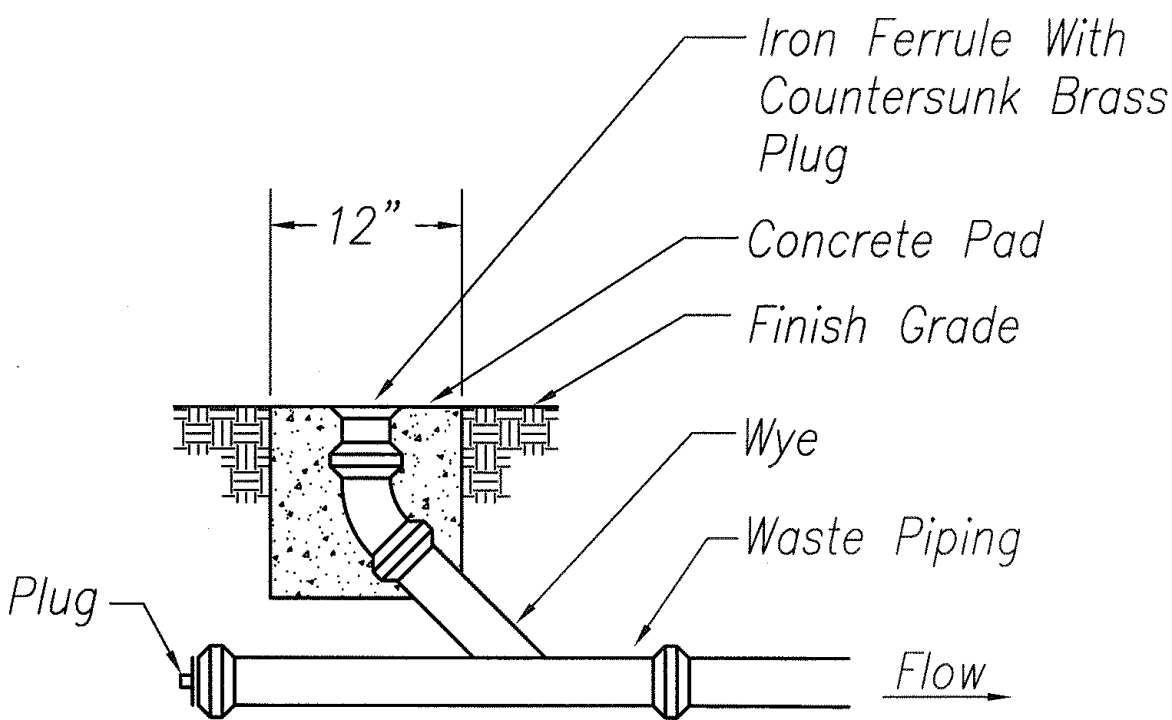
EXPIRATION DATE OF THE LICENSE 4/30/2010
THIS WORK WAS PREPARED BY
ME OR UNDER MY SUPERVISION

6/10/08 1 Deleted Platform Mechanical
DATE REVISION

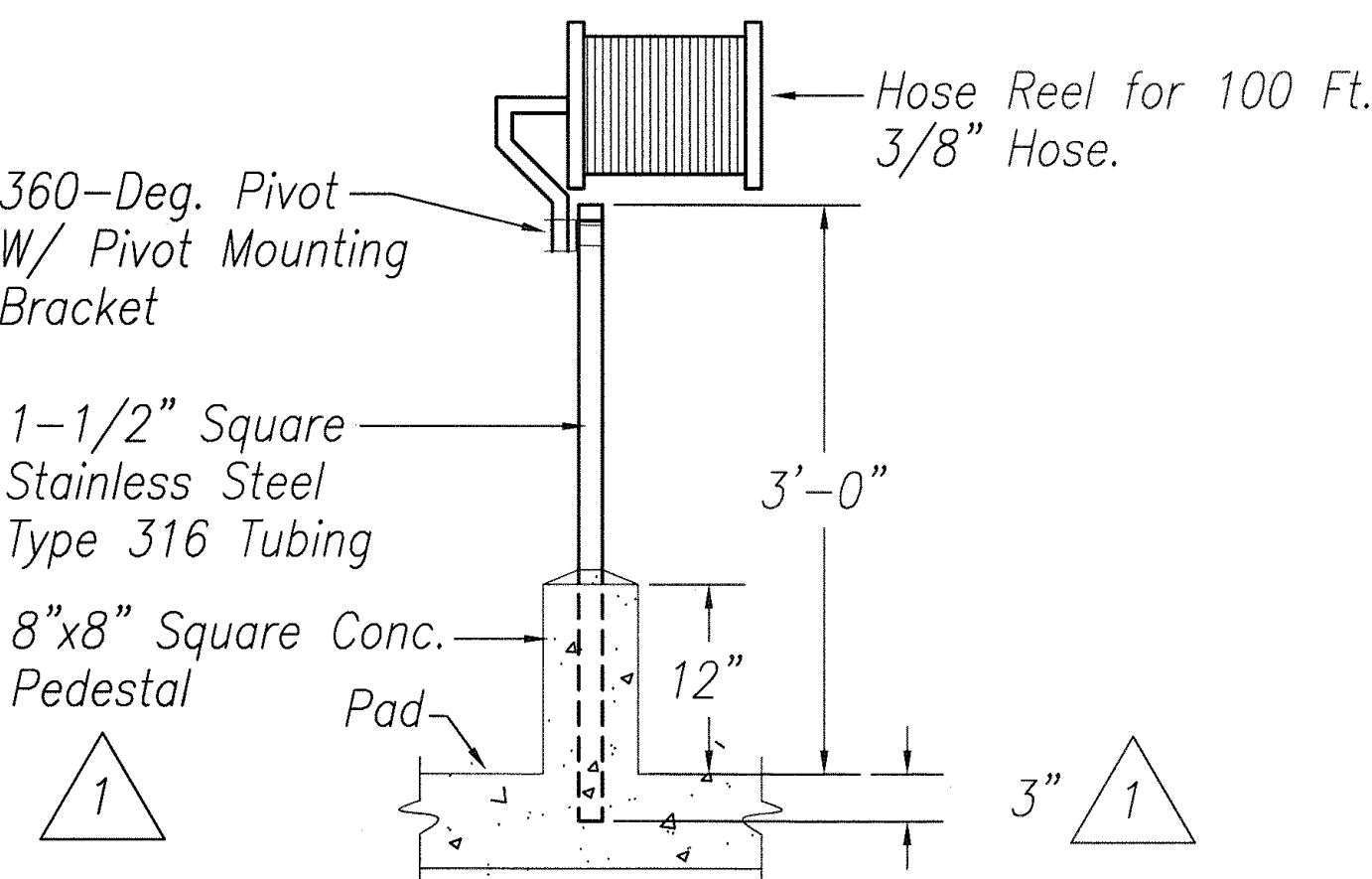
STATE OF HAWAII
DEPARTMENT OF TRANSPORTATION
HIGHWAYS DIVISION
**PEARL CITY BASEYARD
MECHANICAL PLAN**
KANEOHE, PEARL CITY AND WAIANAE
BASEYARD WASHDOWN RACKS
Project No. HWY-0-09-06
Scale: 1/4" = 1'-0" Date: MAY 2008
SHEET No. M-203 OF 46 SHEETS

ADD.31

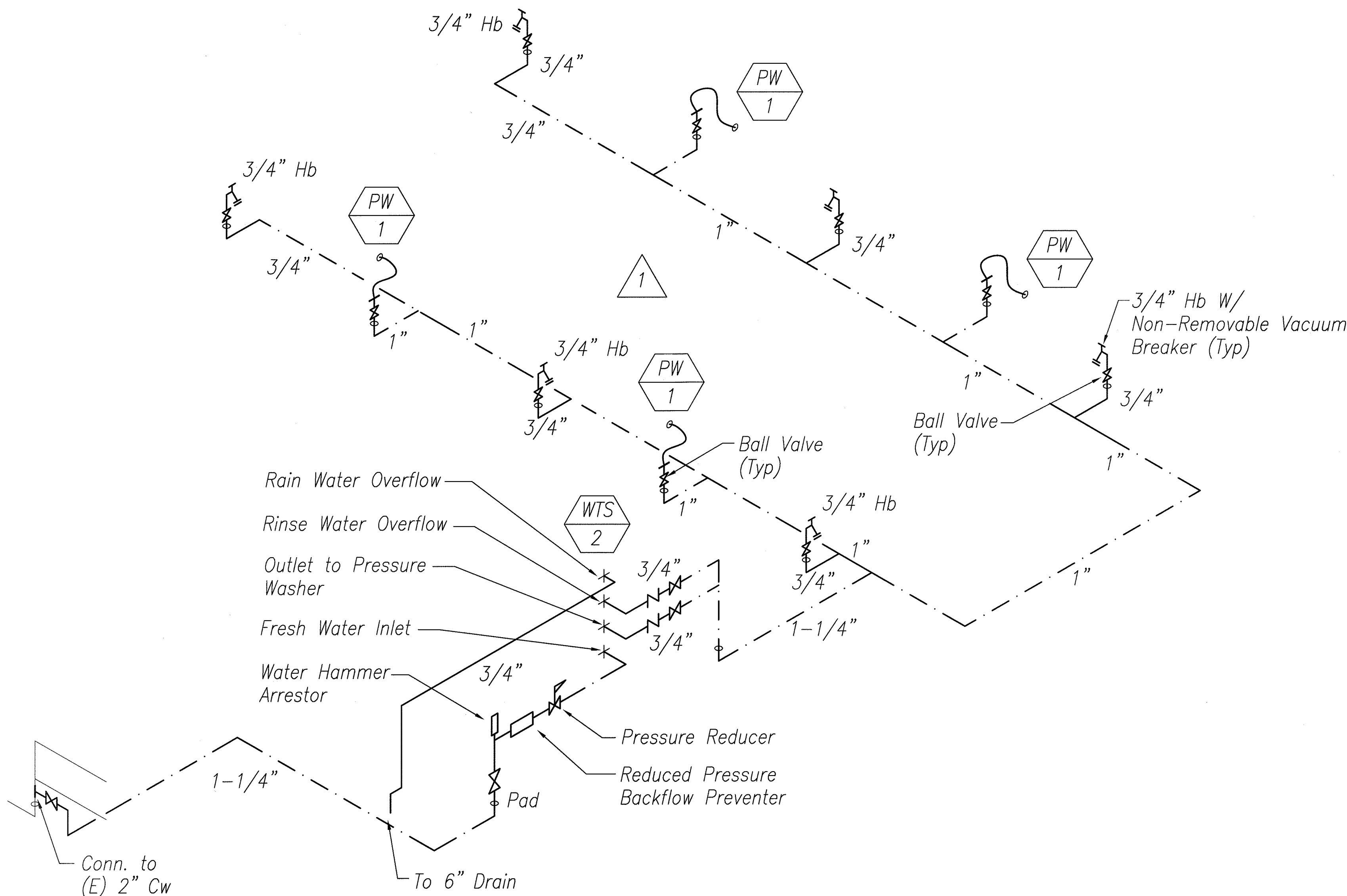
| FED. ROAD DIST. NO. | STATE | PROJ. NO. | FISCAL YEAR | SHEET NO. | TOTAL SHEETS |
|---------------------|-------|-------------|-------------|-----------|--------------|
| HAWAII | HAW. | HWY-0-09-06 | 2008 | ADD.32 | 46 |



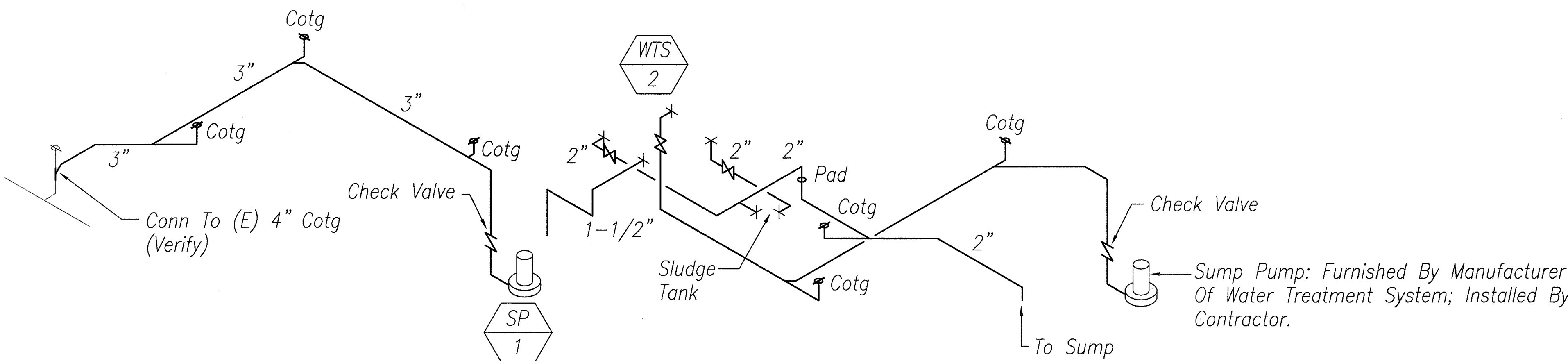
B2
M204/M204
CLEANOUT TO GRADE DETAIL
No Scale



A2
M204/M204
HOSE REEL DETAIL
No Scale



B1
M204/M204
WASH RACK WATER PIPING DIAGRAM
No Scale



A1
M204/M204
WASH RACK WASTE PIPING DIAGRAM
No Scale

| | |
|-------------------|-------|
| DATE | _____ |
| SURVEY PLATTED BY | _____ |
| DRAWN BY | _____ |
| CHECKED BY | _____ |
| NOTED BY | _____ |
| NO. | _____ |

| | | |
|---------|---|--|
| 6/12/08 | 1 | Revised Hose Reel Detail Revised Water Piping |
| DATE | | REVISION |



EXPIRATION DATE OF THE LICENSE 4/30/2010
THIS WORK WAS PREPARED BY
ME OR UNDER MY SUPERVISION

STATE OF HAWAII
DEPARTMENT OF TRANSPORTATION
HIGHWAYS DIVISION
**PEARL CITY BASEYARD
MECHANICAL PLAN**
KANELOE, PEARL CITY AND WAIANAE
BASEYARD WASHDOWN RACKS
Project No. HWY-0-09-06

Scale: NO SCALE Date: MAY 2008

SHEET No. M-204 OF 46 SHEETS