

FLOW DIAGRAM
No Scale

Notes:
Operational Squence

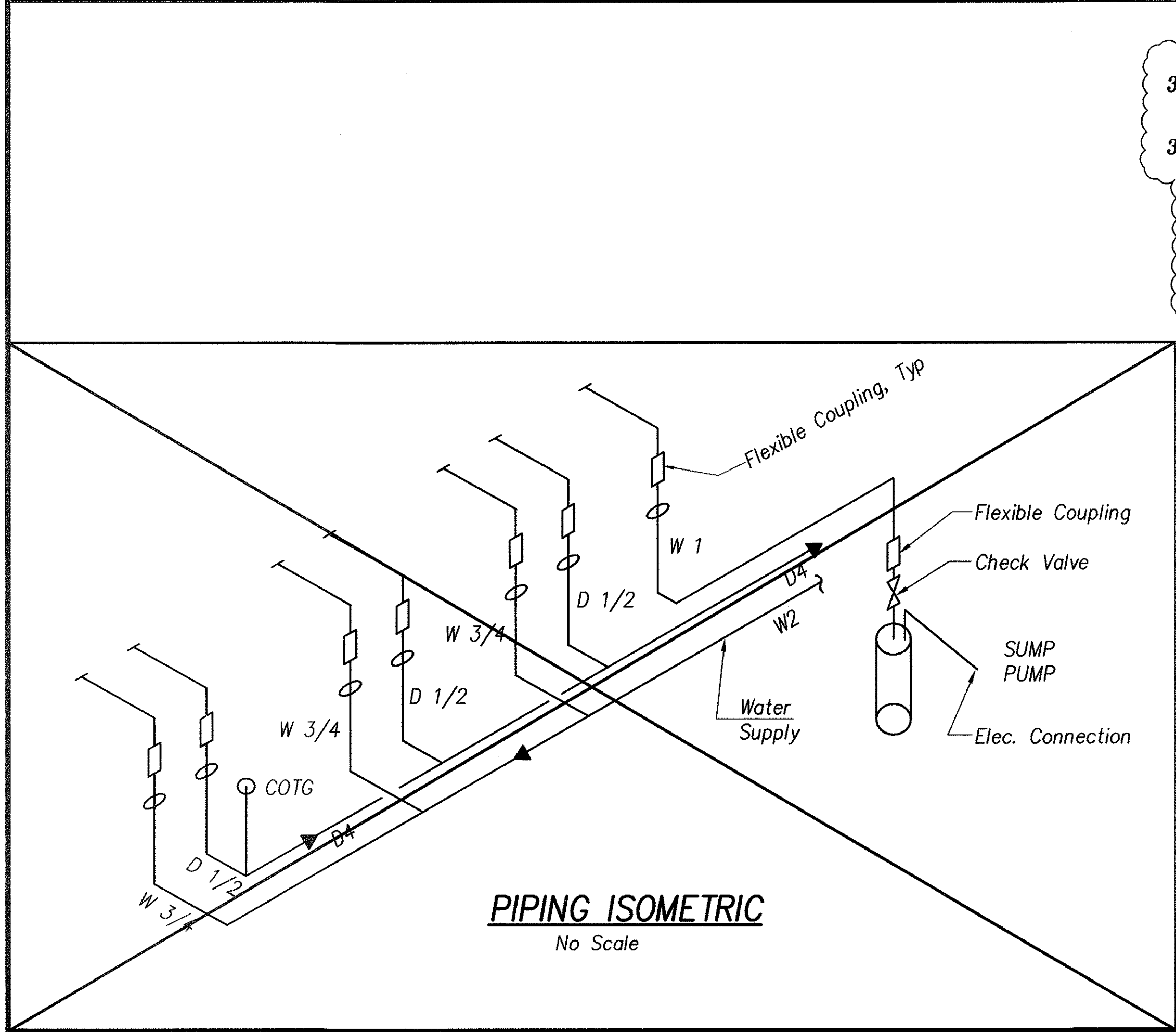
1. Prior To Wash. Manually Open Wash Pad Rain Diverter "B" And Close Wash Pad Rain Diverter "A"
2. Operate Only One Pressure Washer At All Times.
3. Manually Remove Vegetation, Rocks, Larger Debris From Wash Pad And Primary Sediment trench.
4. End Of Wash. Manually Close Wash Pad Rain Diverter "B" And Open Rain Diverter "A"

Secondary Sediment Tank

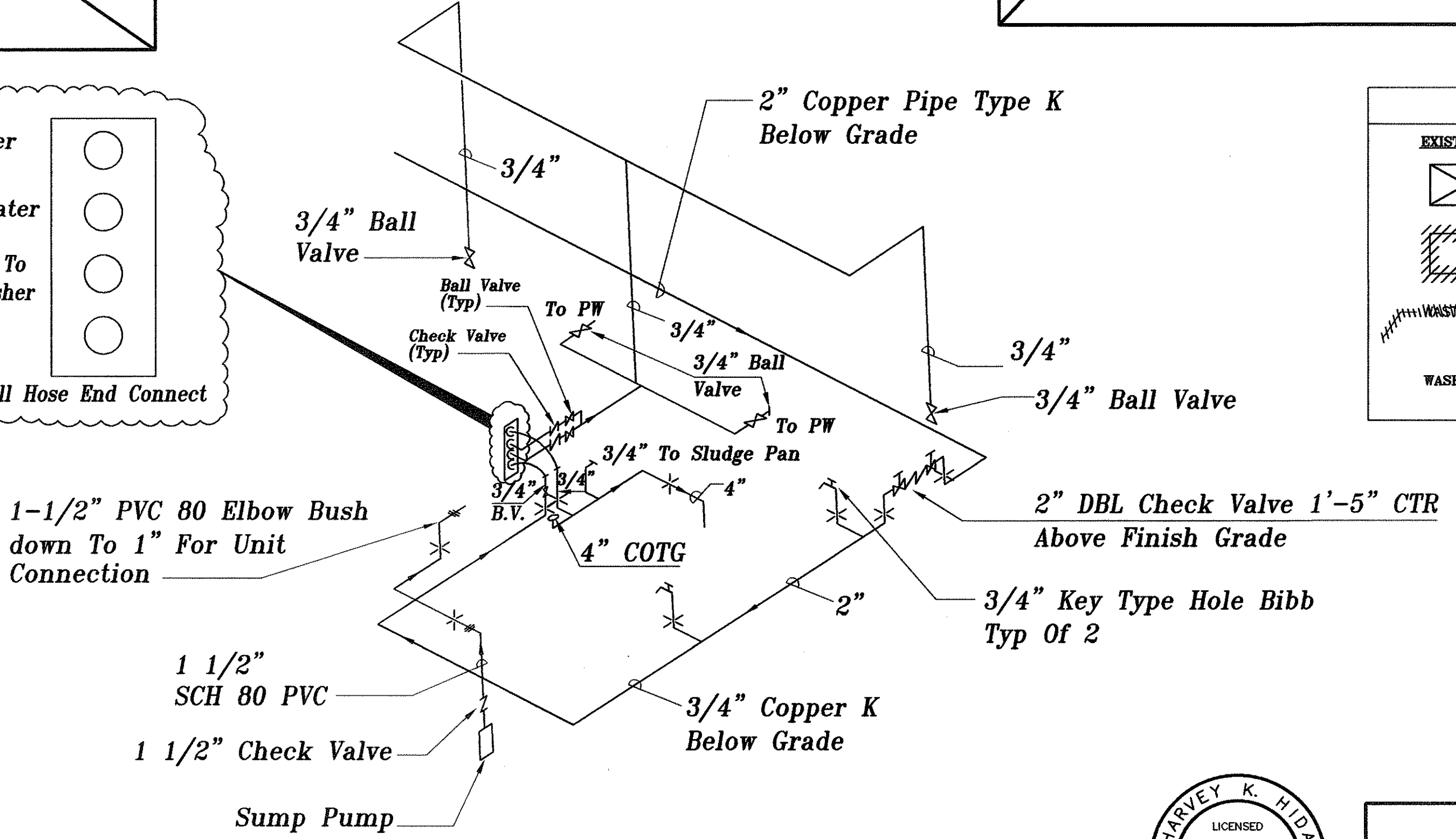
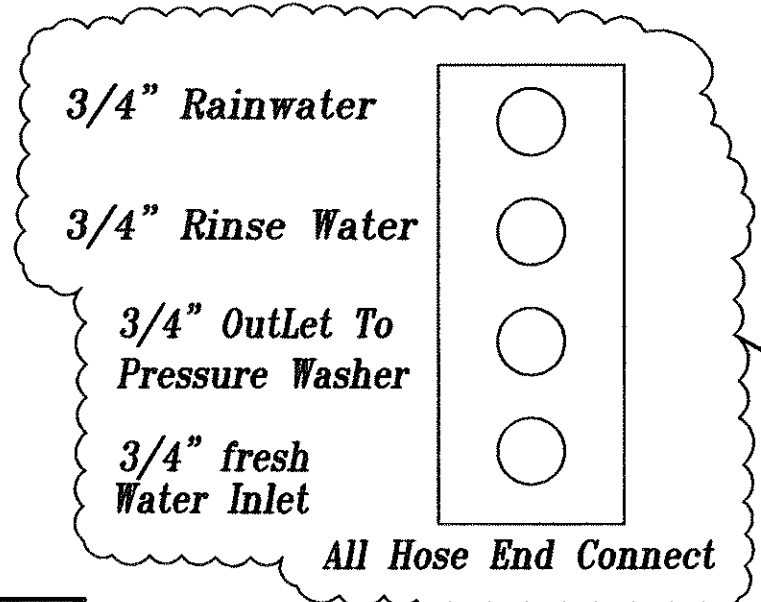
1. Periodically Inspect Sediment Build up. Use Gauge Rod To Probe For Sediment Depth.
2. Sediment To Be Pumped Out With Pumper Truck.

Waste Oil Draw Off

1. Periodically Drain Waste Oil- Use Flexible Hose To Dispose In Waste Oil Drums.

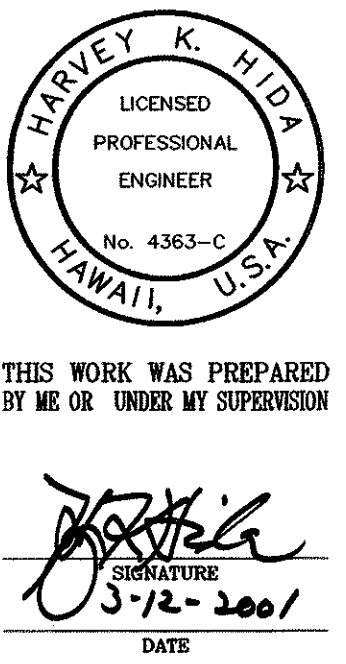


PIPING ISOMETRIC
No Scale



WASHPAD PIPING DIAGRAM
No Scale

LEGEND	
EXISTING	DESCRIPTION
	SINGLE LINE FOR AS-BUILT DELETION
	HATCH LINE FOR AS-BUILT DELETION
	HATCH LINE FOR TEXT AS-BUILT DELETION
	TEXT FOR AS-BUILT POSTING



STATE OF HAWAII
DEPARTMENT OF TRANSPORTATION
HIGHWAYS DIVISION

**FLOW DIAGRAM &
PIPING ISOMETRIC**

KEEHI BASEYARD WASHDOWN AREA
PROJECT NO. HWY-0-18-98

SCALE: AS NOTED DATE: OCT 1998

SHEET No. C7 OF 12 SHEETS