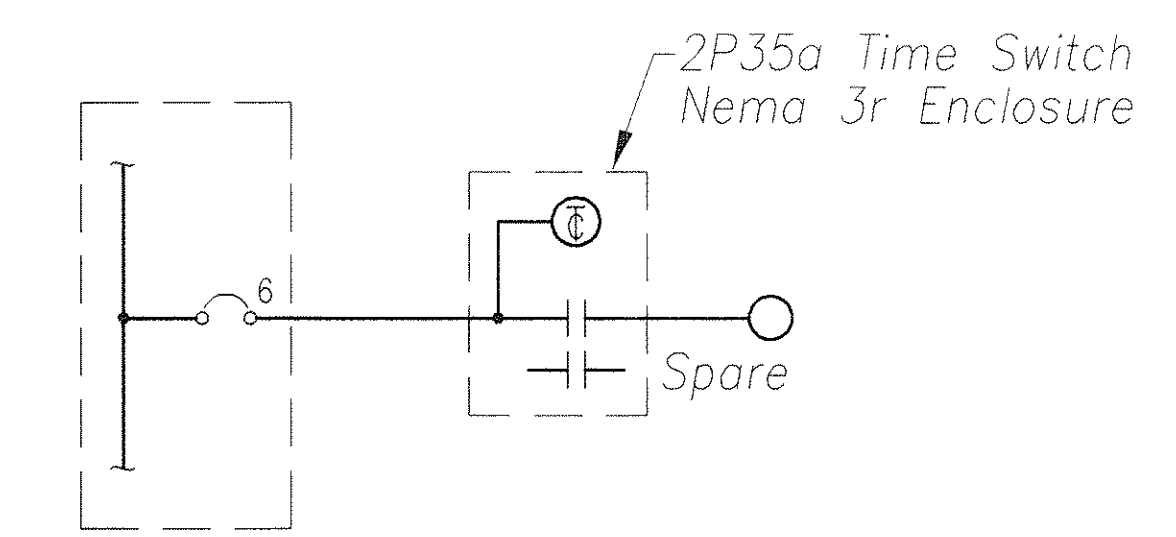


FED. ROAD DIST. NO.	STATE	PROJ. NO.	FISCAL YEAR	SHEET NO.	TOTAL SHEETS
HAWAII	HAW.	HWY-0-18-98	1999	12	12

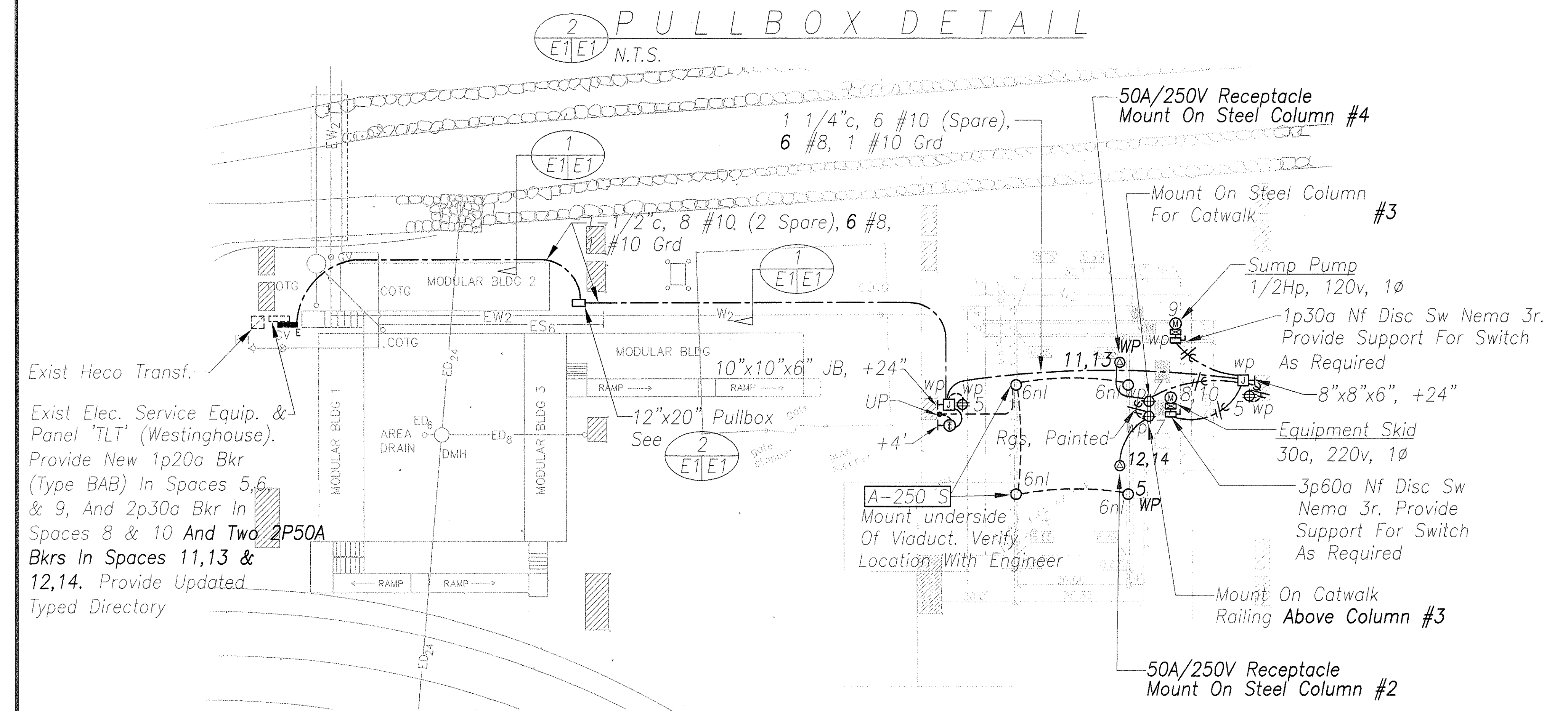
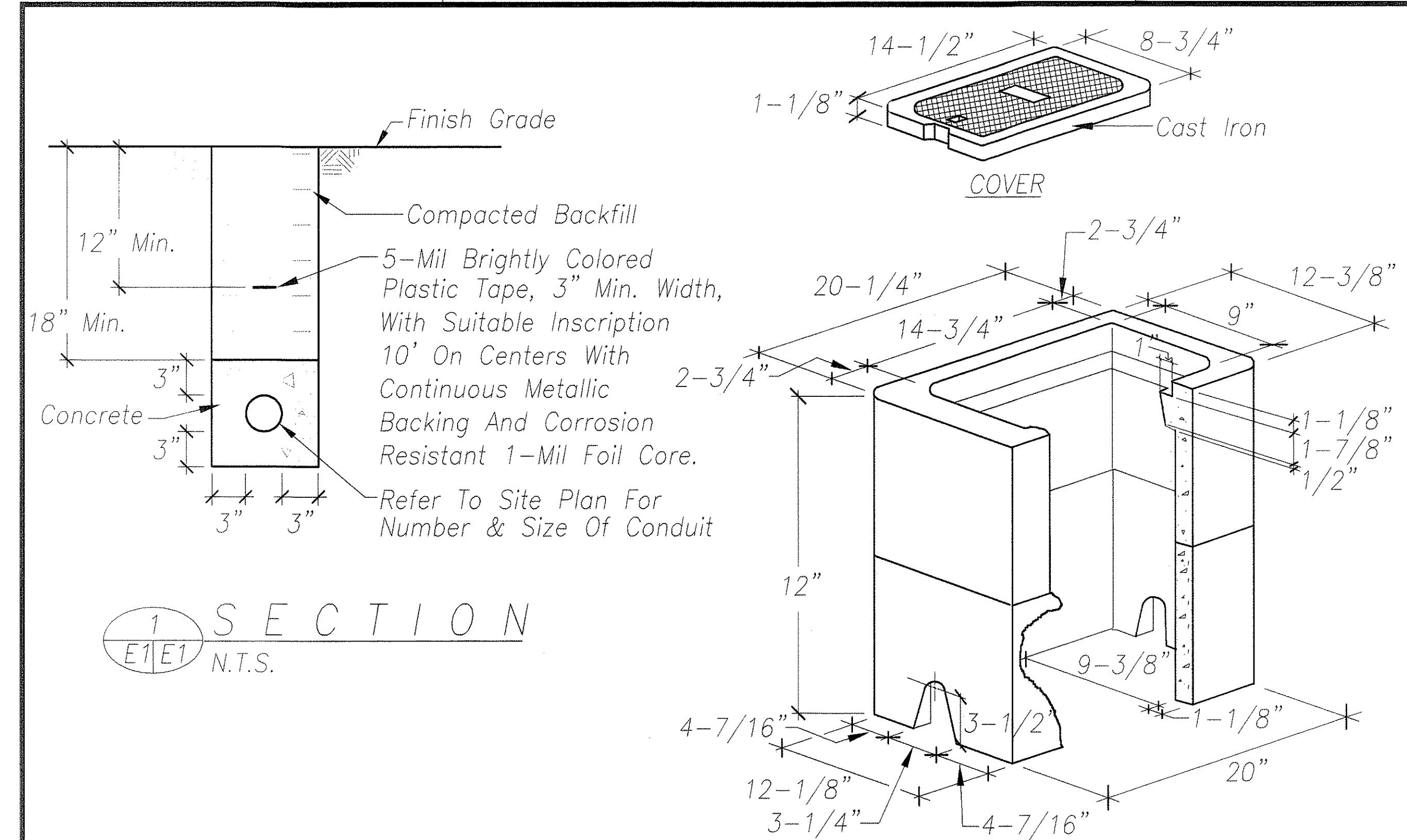
ELECTRICAL SYMBOLS

Exist	New	
	○	Surface Mounted Luminaire
	⊕	Duplex Convenience Receptacle, 3w 15a, 125v. Ground Fault Interrupting Type, +18" Unless Otherwise Noted
	⊖	Time Switch
		Panelboard
	Ⓜ	Motor Connection
	Ⓜ	Motor Controller
	Ⓢ	Safety Switch
	Ⓢ	3W50A,250V Outlet, WP
	WP	Weatherproof
----	----	Wiring in Raceway Concealed In Floor Or Below Grade
----	----	Wiring In Raceway Exposed

- Notes: 1. Any Circuit With No Further Designation Indicates A Two Wire Circuit. Circuits With Additional Wires Are Indicated As Follows $\text{---}/\text{---}$, 3 Wires: $\text{---}/\text{---}/\text{---}$, 4 Wires, Etc.
2. $\text{---}\ominus\text{---}$ Indicates Grounding Conductor Sized Per National Electrical Code Article 250-94.



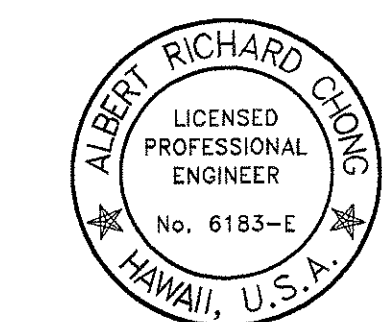
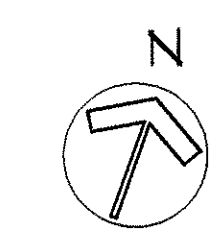
NIGHT LIGHT DIAGRAM
N.T.S.



Exist Heco Transf.
Exist Elec. Service Equip. & Panel 'TLT' (Westinghouse).
Provide New 1p20a Bkr (Type BAB) In Spaces 5,6 & 9, And 2p30a Bkr In Spaces 8 & 10 And Two 2P50A Bkrs In Spaces 11,13 & 12,14. Provide Updated Typed Directory

50A/250V Receptacle Mount On Steel Column #4
Mount On Steel Column For Catwalk #3
Sump Pump 1/2Hp, 120v, 1Ø
1p30a Nf Disc Sw Nema 3r. Provide Support For Switch As Required
8"x8"x6", +24"
Equipment Skid 30a, 220v, 1Ø
3p60a Nf Disc Sw Nema 3r. Provide Support For Switch As Required
Mount On Catwalk Railing Above Column #3
50A/250V Receptacle Mount On Steel Column #2
A-250 S Mount underside Of Viaduct. Verify Location With Engineer
Rgs, Painted
12"x20" Pullbox See 2
10"x10"x6" JB, +24"
1 1/4" c, 6 #10 (Spare), 6 #8, 1 #10 Grd
1/2" c, 8 #10 (2 Spare), 6 #8, #10 Grd
MODULAR BLDG 1
MODULAR BLDG 2
MODULAR BLDG 3
AREA DRAIN
DMH
RAMP
GATE
GATE SLIPPER

DATE	SURVEY PLOTTED BY
DATE	DRAWN BY
DATE	DESIGNED BY
DATE	CHECKED BY



THIS WORK WAS PREPARED BY ME OR UNDER MY SUPERVISION

Albert Chong Associates Inc.
Consulting Electrical Engineers and Lighting Designers
765 Ariana Street, Suite 401
Honolulu, Hawaii 96814
Telephone (808) 941-9402

STATE OF HAWAII
DEPARTMENT OF TRANSPORTATION
HIGHWAYS DIVISION

ELECTRICAL SITE PLAN

KEEHI BASEYARD WASHDOWN AREA
PROJECT NO. HWY-0-18-98

SCALE: AS NOTED
DATE: SEPT 1998
SHEET No. E1 OF 12 SHEETS

AS-BUILT