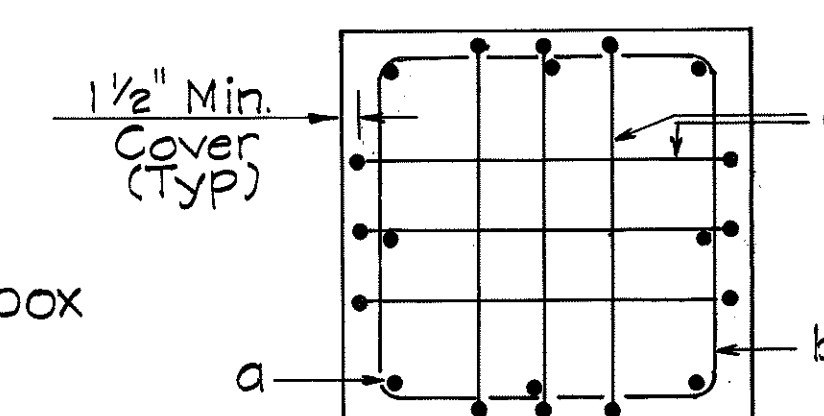


FED. ROAD DIST. NO.	STATE	PROJ. NO.	FISCAL YEAR	SHEET NO.	TOTAL SHEETS
HAWAII	HAW.	HWY-0-01-86	1987	8	12

# ELECTRICAL NOTES

1. The Contractor shall install Highway Lighting Standard and Mast Arms and Luminaires (all furnished by the State). The State will also furnish the anchor bolts with leveling nuts and washer for the foundation.
2. The baseyard lighting system, floodlight system and each building's electrical system shall be installed on separate circuits.
3. The Contractor shall connect and energize the existing electrical system for Buildings A, B, C & D. Refer to plan sheet No. 10 for Building E electrical system.
4. The electrical panel board and floodlights on/off switch shall be installed in Building D and shall be located as directed by the Engineer.
5. Final locations of Standards shall be determined in the field by the Engineer.
6. Baseyard lighting shall be installed in accordance with section 622- Highway Lighting System of the Standard Specifications.
7. All electrical work shall be installed in accordance with the applicable provisions of the latest edition of the National Electrical Code, the rules and regulations of the City and County of Honolulu and the Hawaiian Electric Company, Inc.
8. The Contractor shall install highway lighting cables and wires as specified in the Standard Specifications.
9. The Contractor shall obtain and pay for all electrical permits as required by local laws or rules.
10. Panel boards shall be single phase 3-wire solid neutral 120/240 volt circuit breaker load center surface mounted with:
  - 1 - 60 amp main breaker 2/Pole
  - 1 - 30 amp breaker 2/Pole
  - 1 - 20 amp breaker single pole
11. All additional materials and labor not shown on the plans or called for herein, which are necessary to complete the installation of the various systems, shall be considered incidental to the various contract items, and no additional compensation will be allowed therefor.



8 #7 x 6'-0" Bars "a" Straight  
6 #4 Bars "b" 9" 8"  
6 #4 Bars "c" 8"  
**SECTION A-A**  
Reinforcing Plan for  
2'-6" Square

STATE OF HAWAII

DEPARTMENT OF TRANSPORTATION

HIGHWAYS DIVISION

BASEYARD LIGHTING PLAN

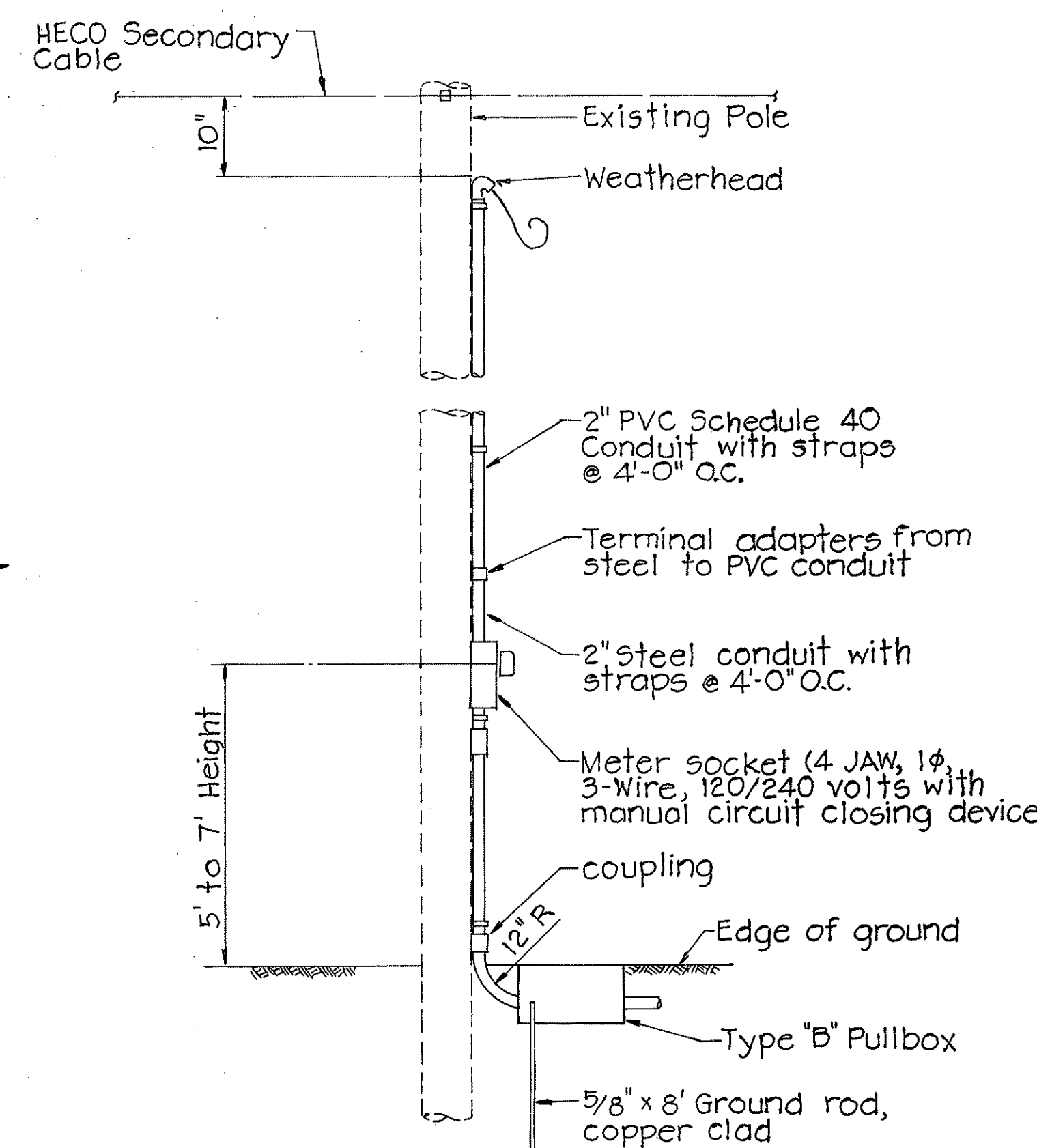
RELOCATION OF WAIANAE BASEYARD

PROJ. No. HWY-0-01-86

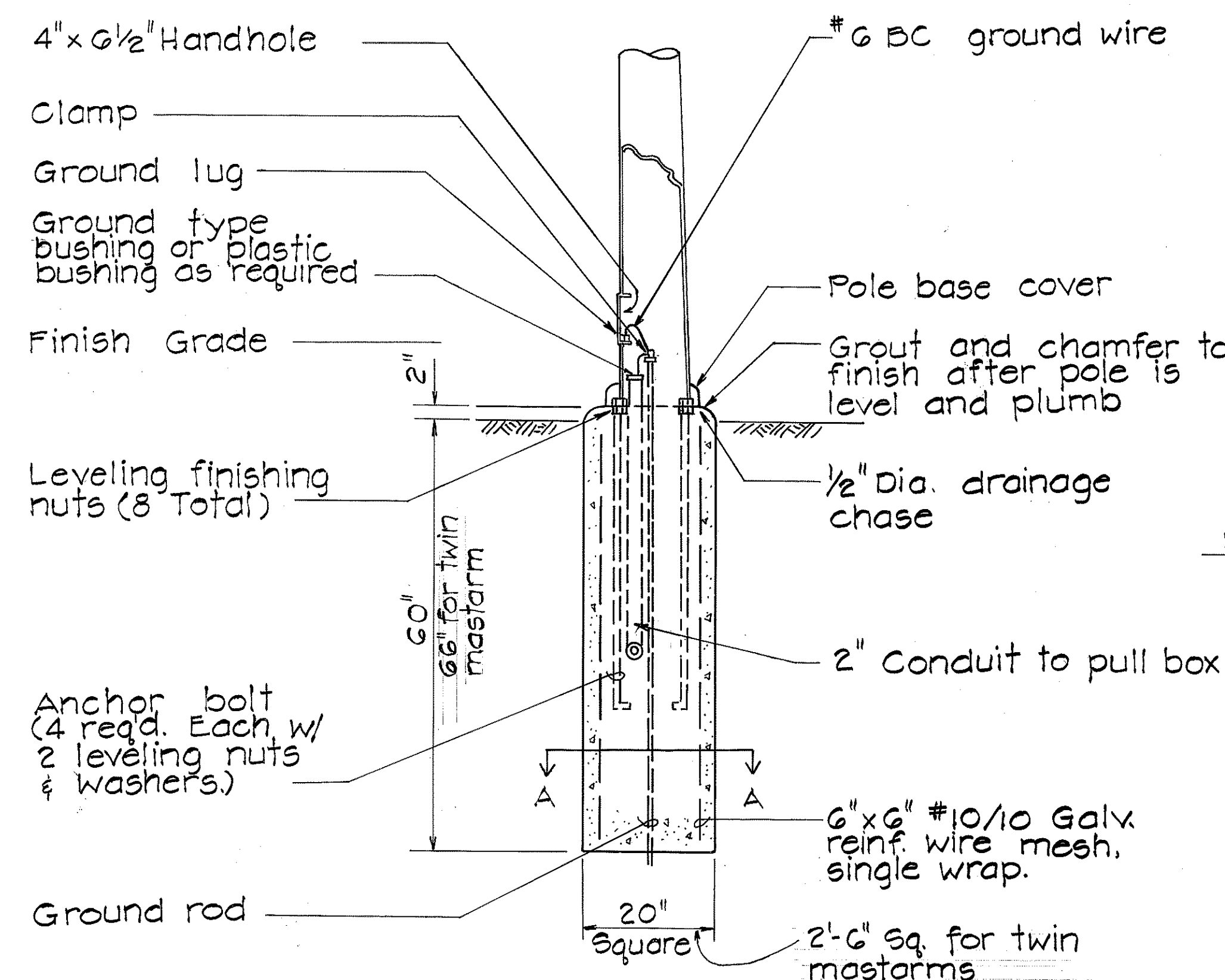
Scale: As Shown

Date: June, 1986

SHEET No. 11 OF 2 SHEETS



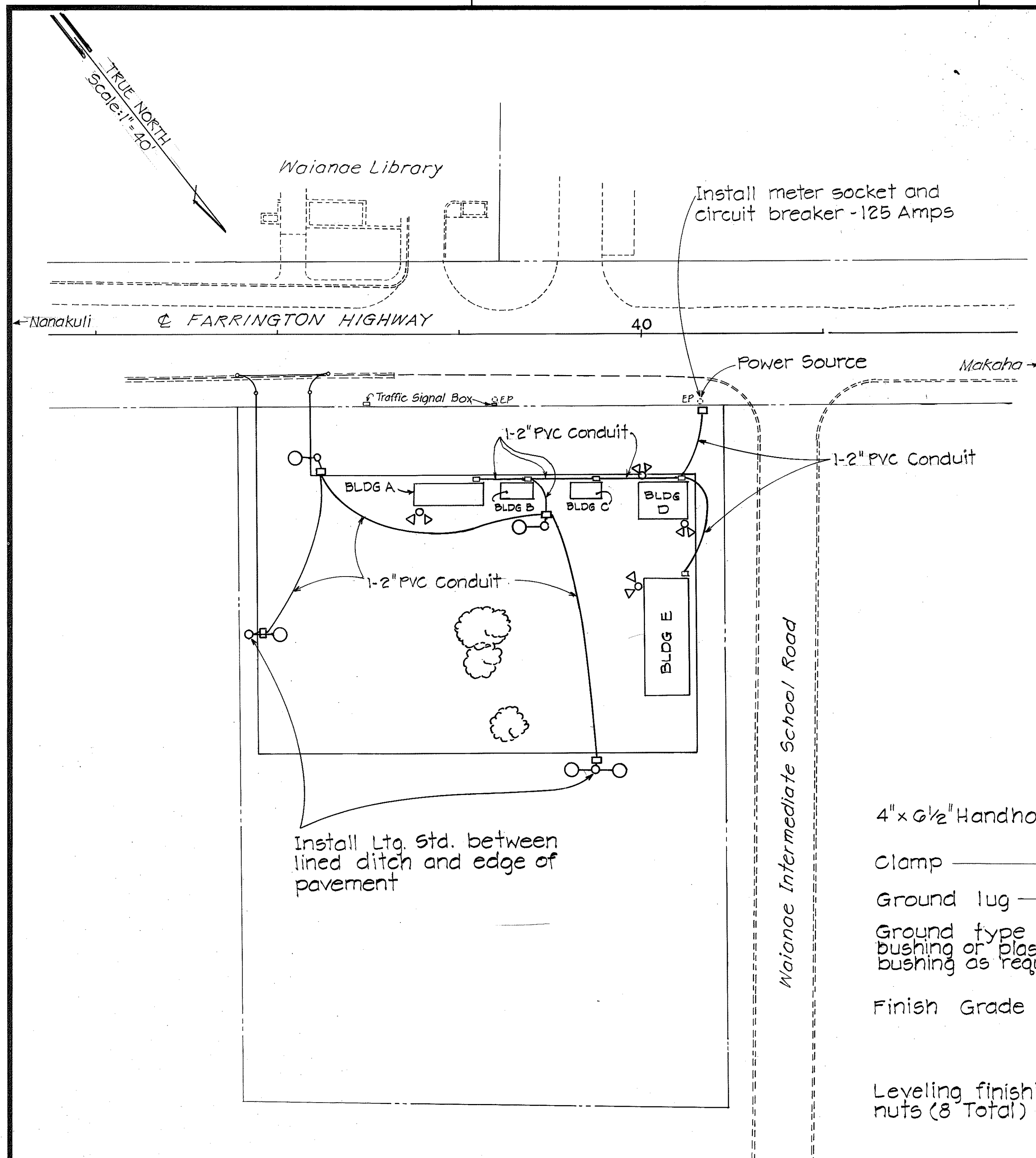
**SERVICE POLE DETAIL**  
Not to Scale



**MOUNTING DETAIL FOR ST. LTG. STD.**  
N.T.S.

## ELECTRICAL SYMBOLS

- Type "B" Electrical Pullbox
- Highway lighting standard, twin or single arms and luminaires furnished by the state
- New twin floodlights



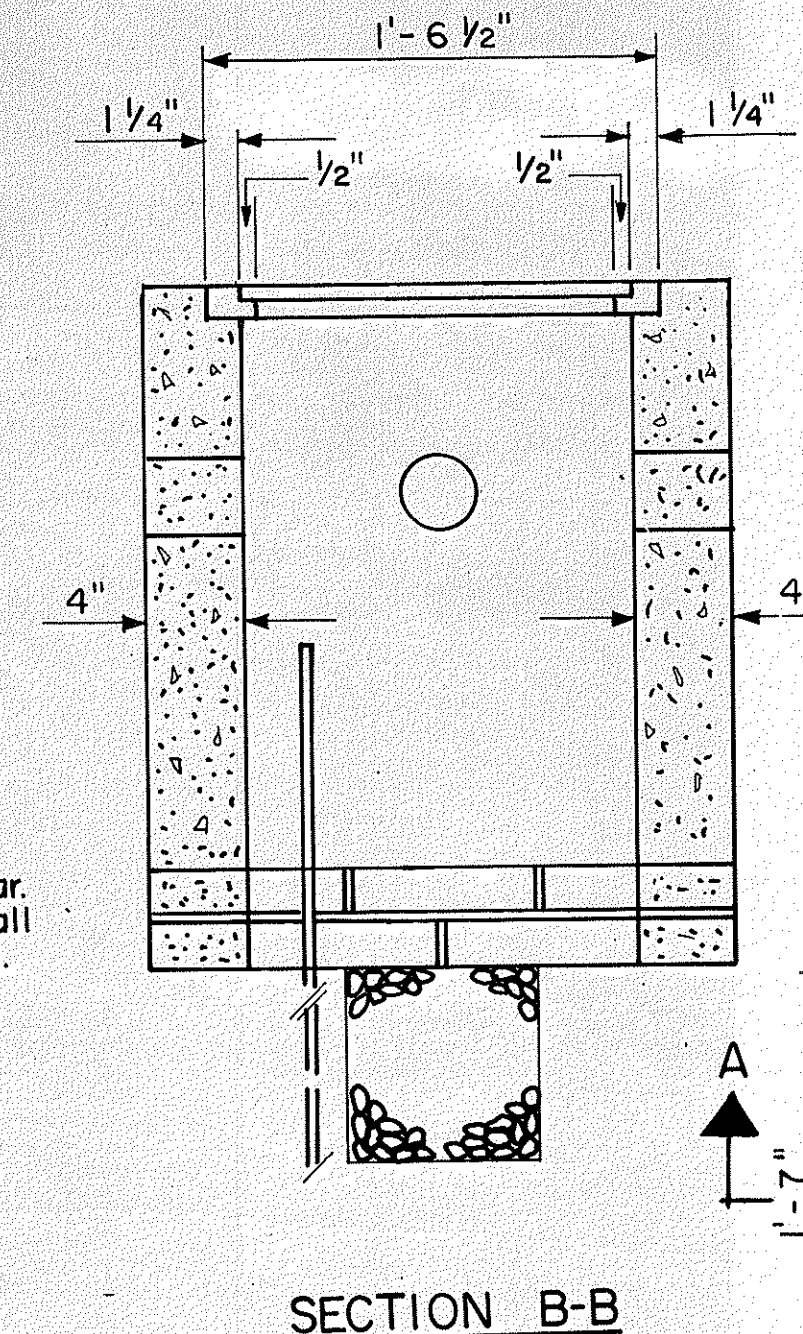
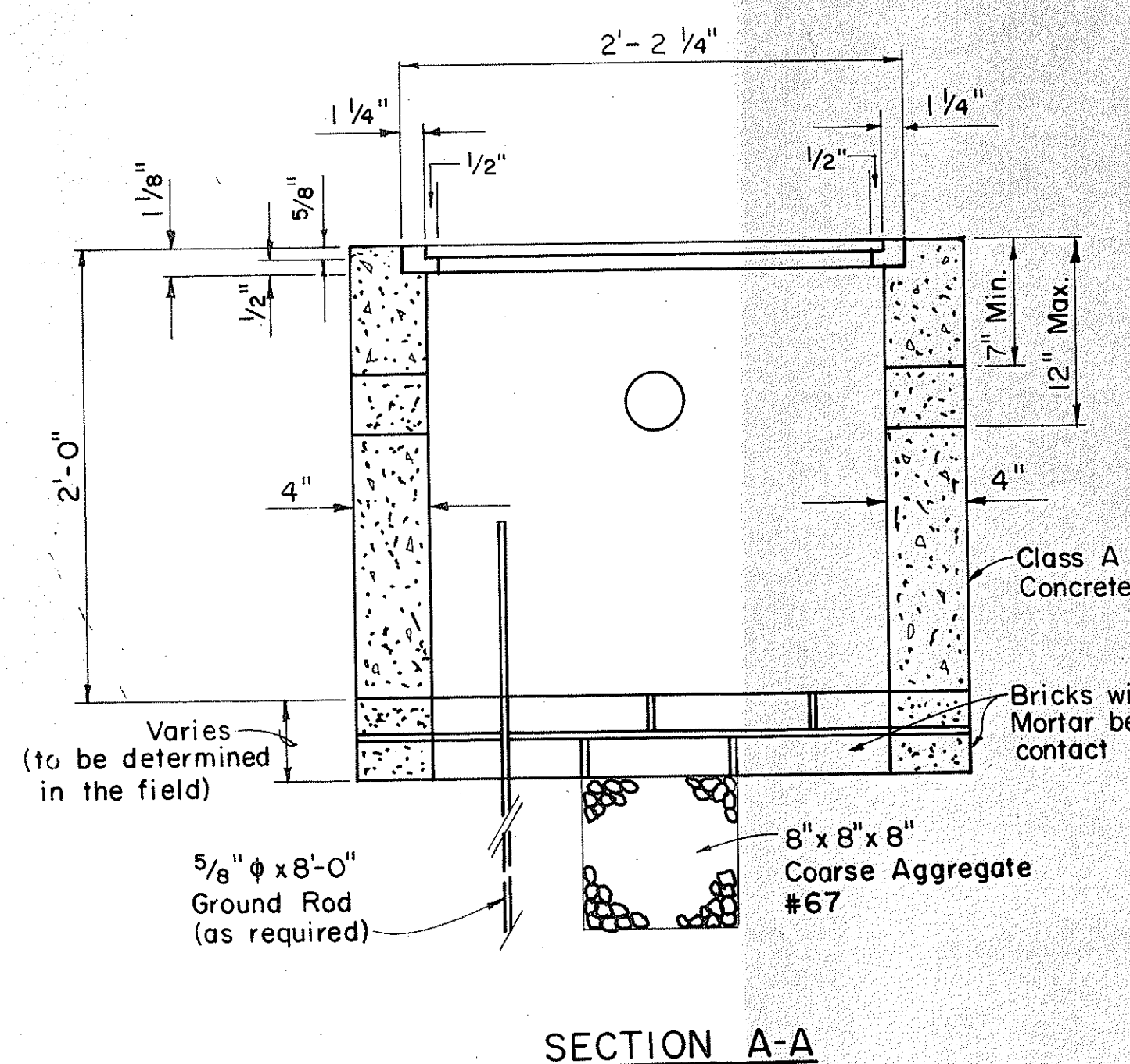
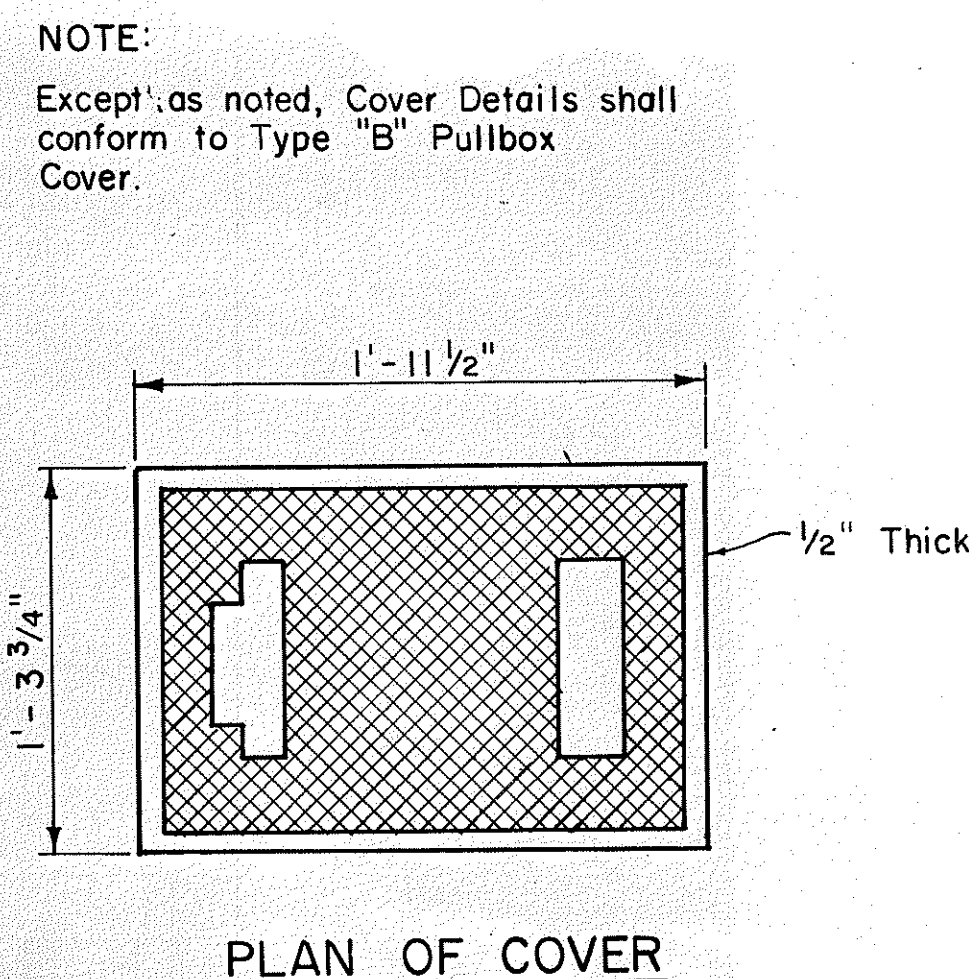
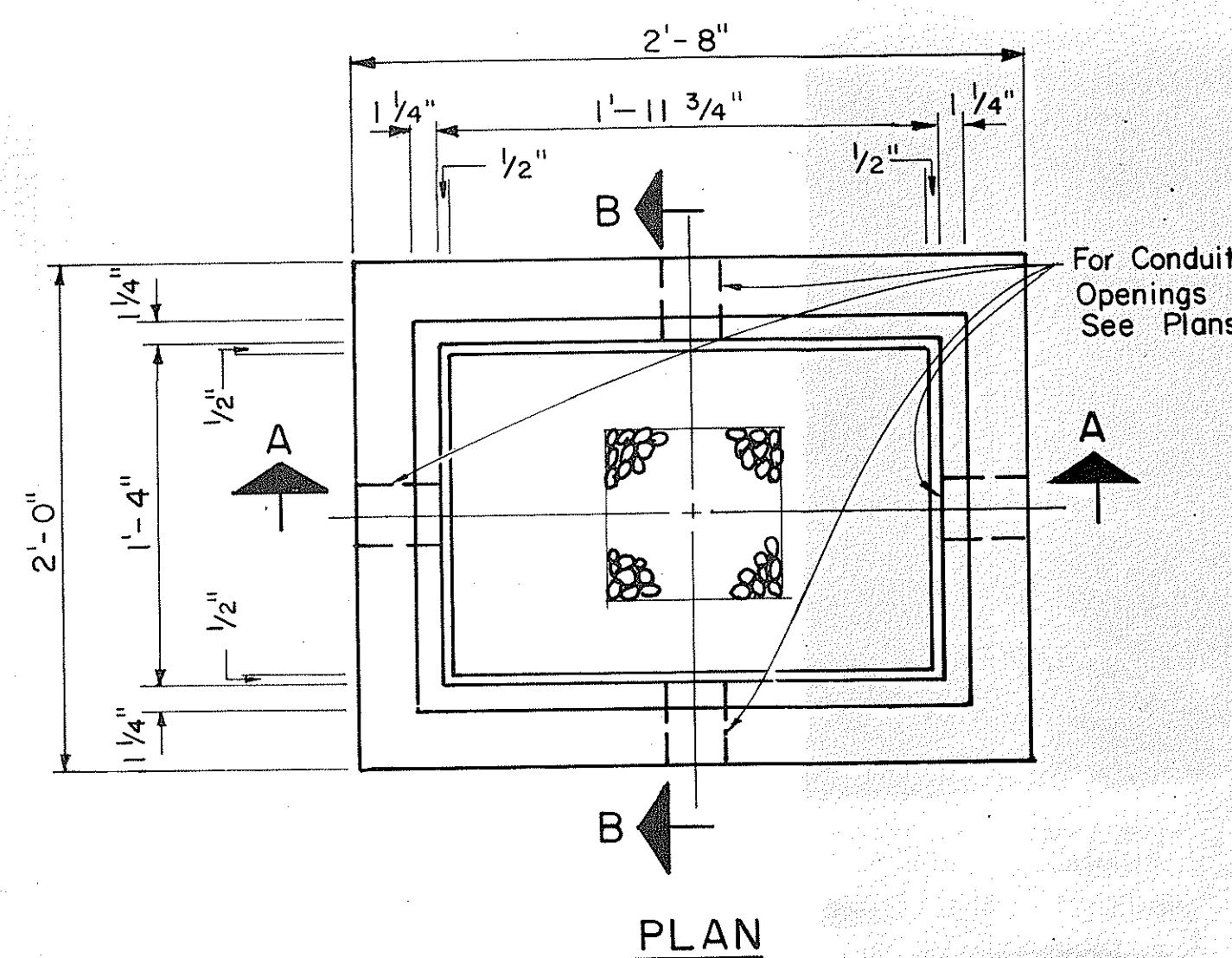
Install Ltg. Std. between lined ditch and edge of pavement

Waianae Intermediate School Road

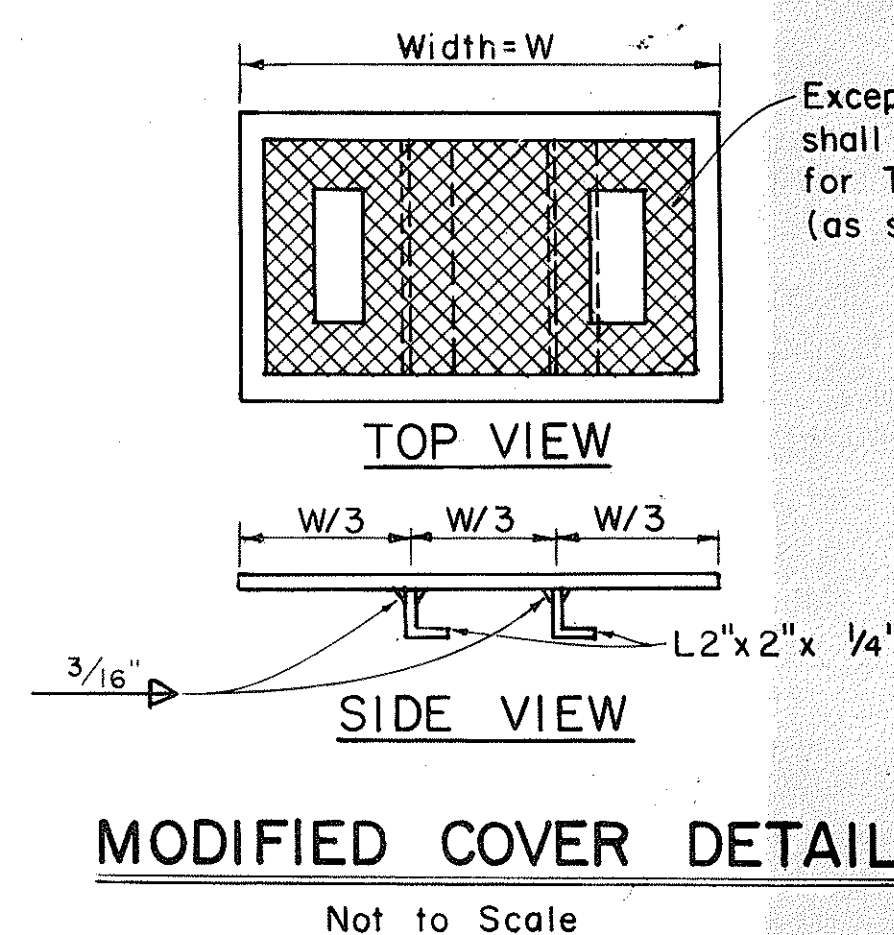
SURVEY PLOTTED BY	DATE
DRAWN BY	
DESIGNED BY	
QUANTITIES BY	
CHECKED BY	
ORIGINAL PLAN	
NOTE BOOK	
No.	



FED. ROAD DIST. NO.	STATE	PROJ. NO.	FISCAL YEAR	SHEET NO.	TOTAL SHEETS
HAWAII	HAW.	HWY-0-01-86	1987	7	12



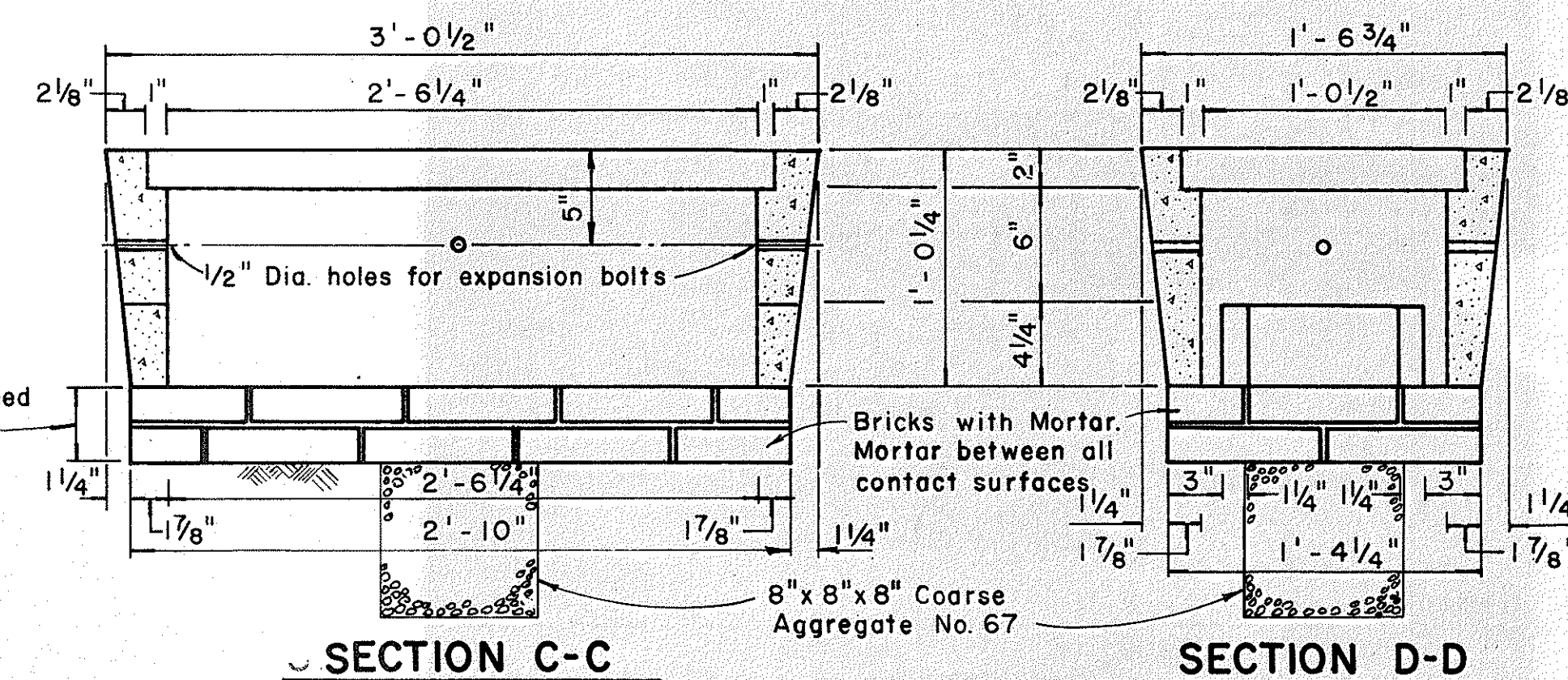
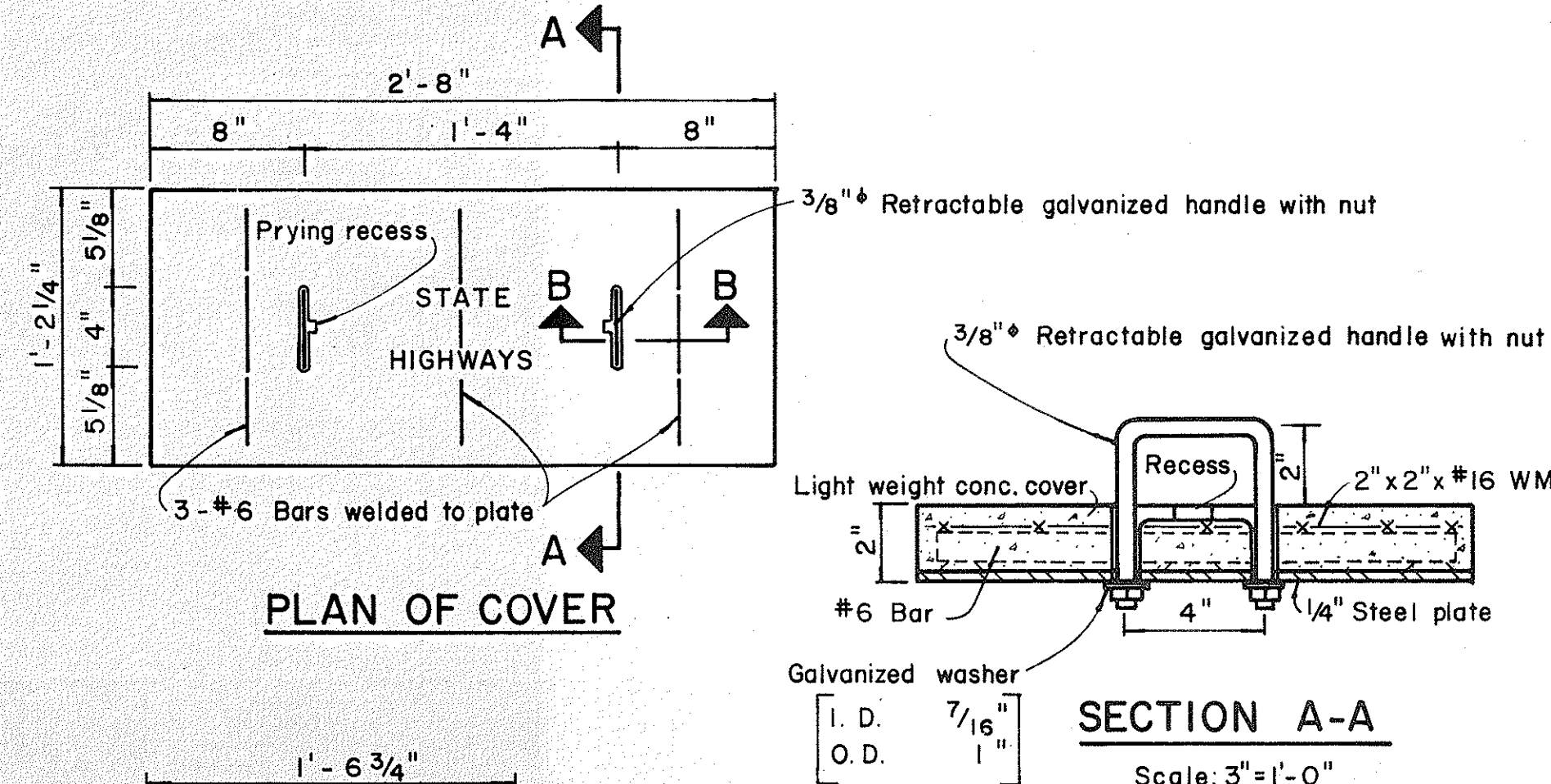
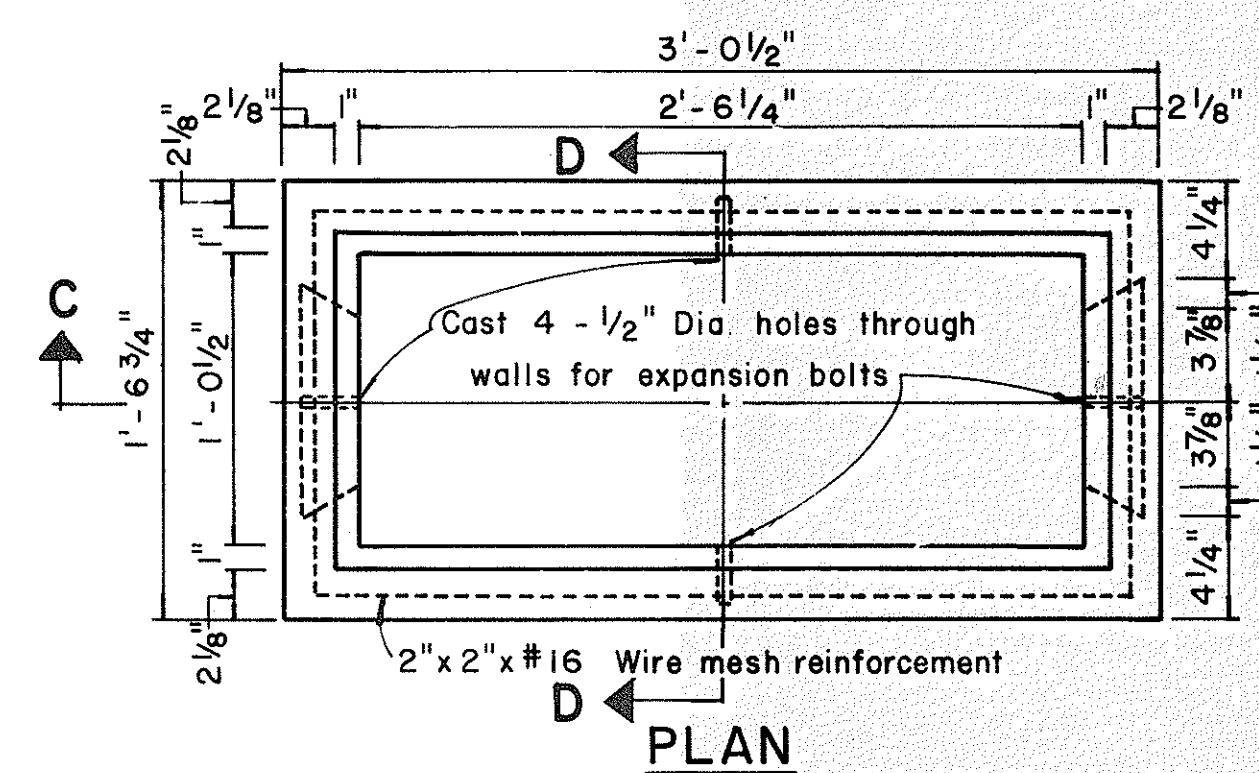
**TYPE "A" PULLBOX**  
Scale: 1 1/2" = 1'-0"



NOTE:  
Hot dip galvanize after fabrication.  
Modified cover shall be furnished  
when called for on plans.

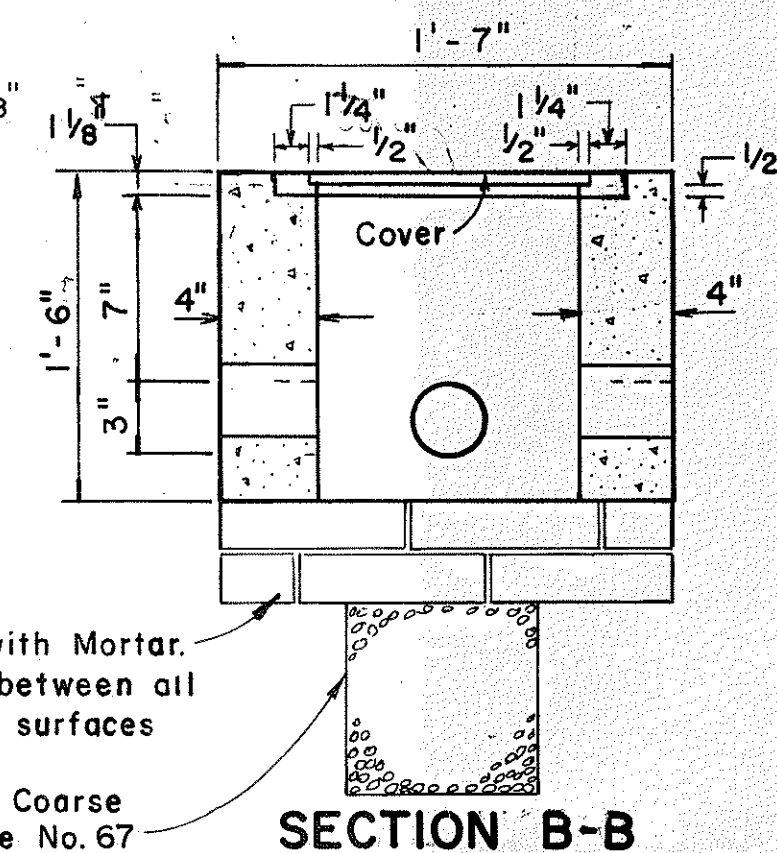
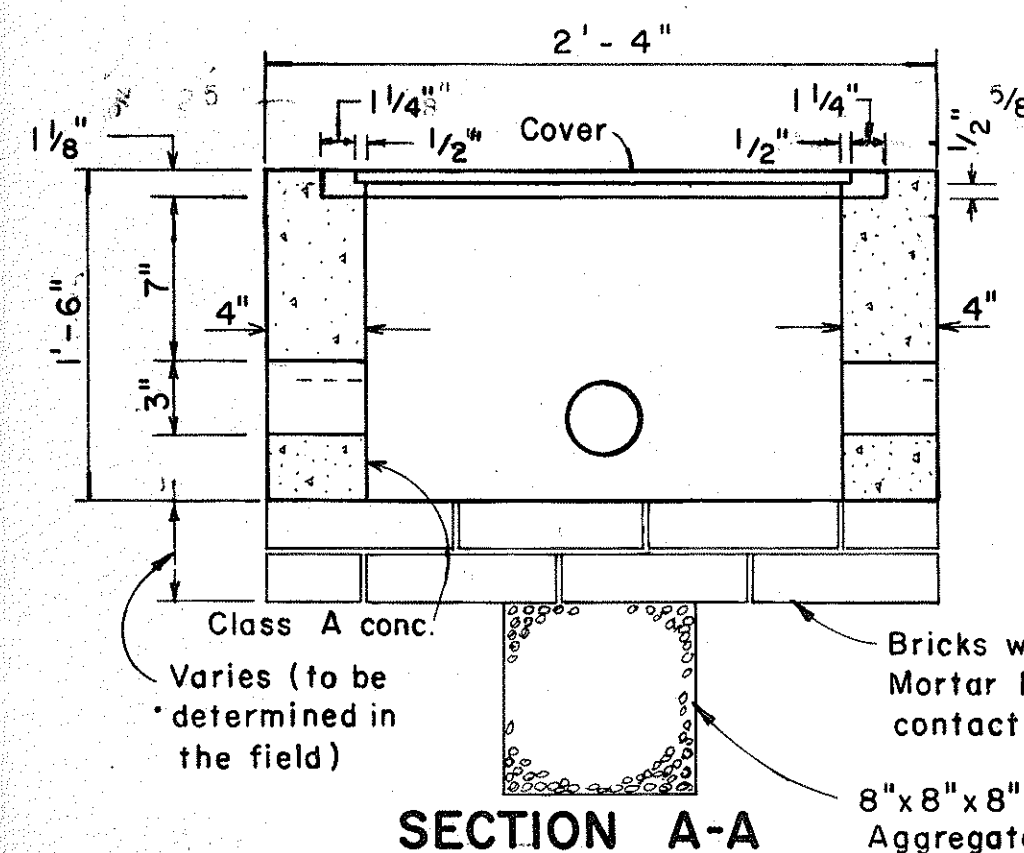
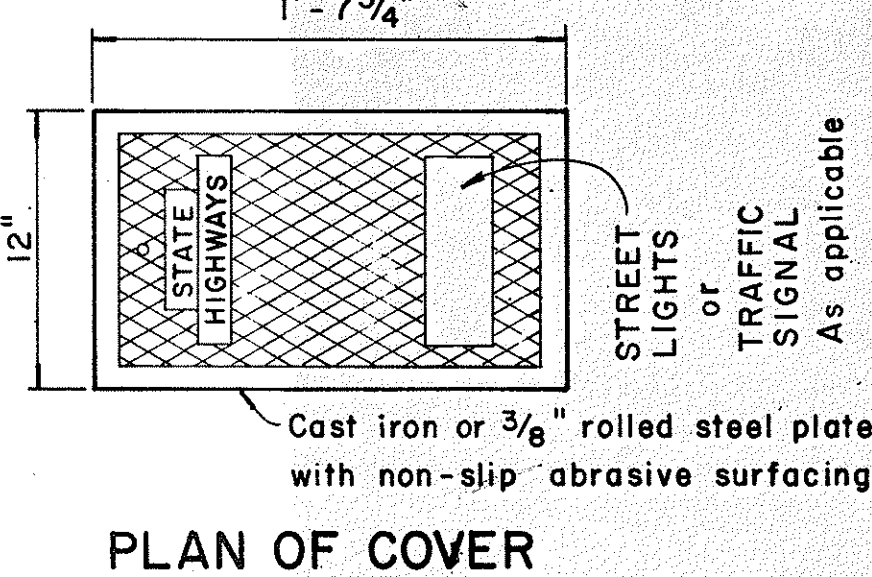
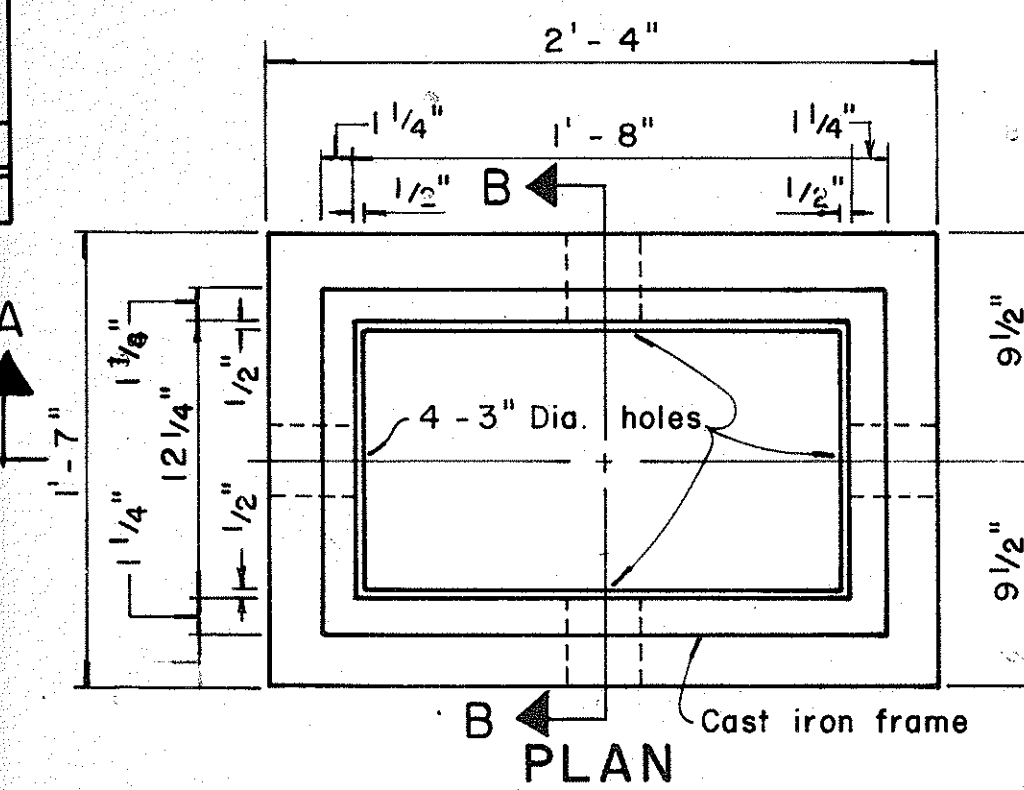
Except where noted, details  
shall conform to cover details  
for Type "A" or Type "B" Pullbox  
(as specified on plans).

NOTE:  
Except as noted, Cover Details shall  
conform to Type "B" Pullbox  
Cover.



**TYPE "C" PULLBOX**  
Scale: 1 1/2" = 1'-0"

NOTE:  
Steel rim shall be welded to bottom of steel cover  
if necessary so that top of cover and frame are flush.



**TYPE "B" PULLBOX**  
Scale: 1 1/2" = 1'-0"

APPROVAL RECOMMENDED:  
*Enrique J. ...*  
TRAFFIC ENGINEER  
DATE: 12/29/62

APPROVED:  
*...*  
ASSISTANT CHIEF, ENGINEERING  
DATE: 12-30-69

NO.	REVISION	APPROVED BY	DATE
1	Revised Type B & C Pullbox details	H.T.	8-5-76
2	Revised Type "A" Pullbox & Added Modified Cover.	H.T.	1-31-80
3	Revised Type B & C Pullbox details.	J.D.	2-1-83

STATE OF HAWAII  
DEPARTMENT OF TRANSPORTATION  
HIGHWAYS DIVISION

**STANDARD DETAILS**  
**PULLBOXES**

Scale as noted Date  
SHEET No. 12 OF 2 SHEETS DT 401

DESIGNED BY	DATE
DRAWN BY	
CHECKED BY	
NOTED BY	
ORIGINAL PLAN	
NOTE BOOK	