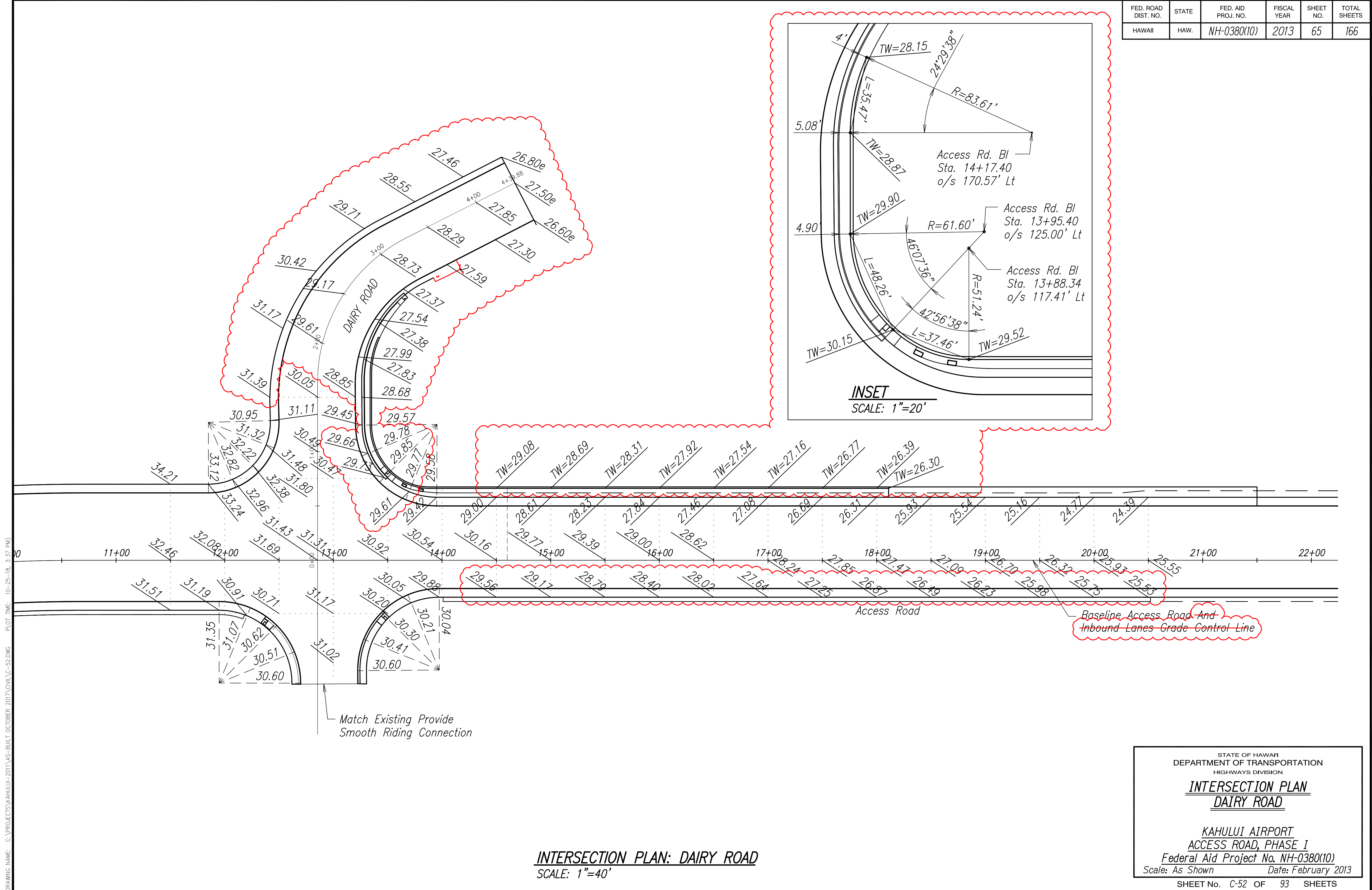


FED. ROAD DIST. NO.	STATE	FED. AID PROJ. NO.	FISCAL YEAR	SHEET NO.	TOTAL SHEETS
HAWAII	HAW.	NH-0380(10)	2013	65	166

DRAWING NAME: C:\PROJECTS\KAHULUI-2011\AS-BUILT OCTOBER 2017\CIVIL\G-52.DWG PLOT TIME: 10-25-18, 3:37 PM

ORIGINAL PLAN	SURVEY PLOTTED BY	DATE
NOTE BOOK	DRAWN BY	
	DESIGNED BY	
	QUANTITIES BY	
	CHECKED BY	



INTERSECTION PLAN: DAIRY ROAD
SCALE: 1"=40'

STATE OF HAWAII
DEPARTMENT OF TRANSPORTATION
HIGHWAYS DIVISION

INTERSECTION PLAN
DAIRY ROAD

KAHULUI AIRPORT
ACCESS ROAD, PHASE I
Federal Aid Project No. NH-0380(10)
Scale: As Shown Date: February 2013

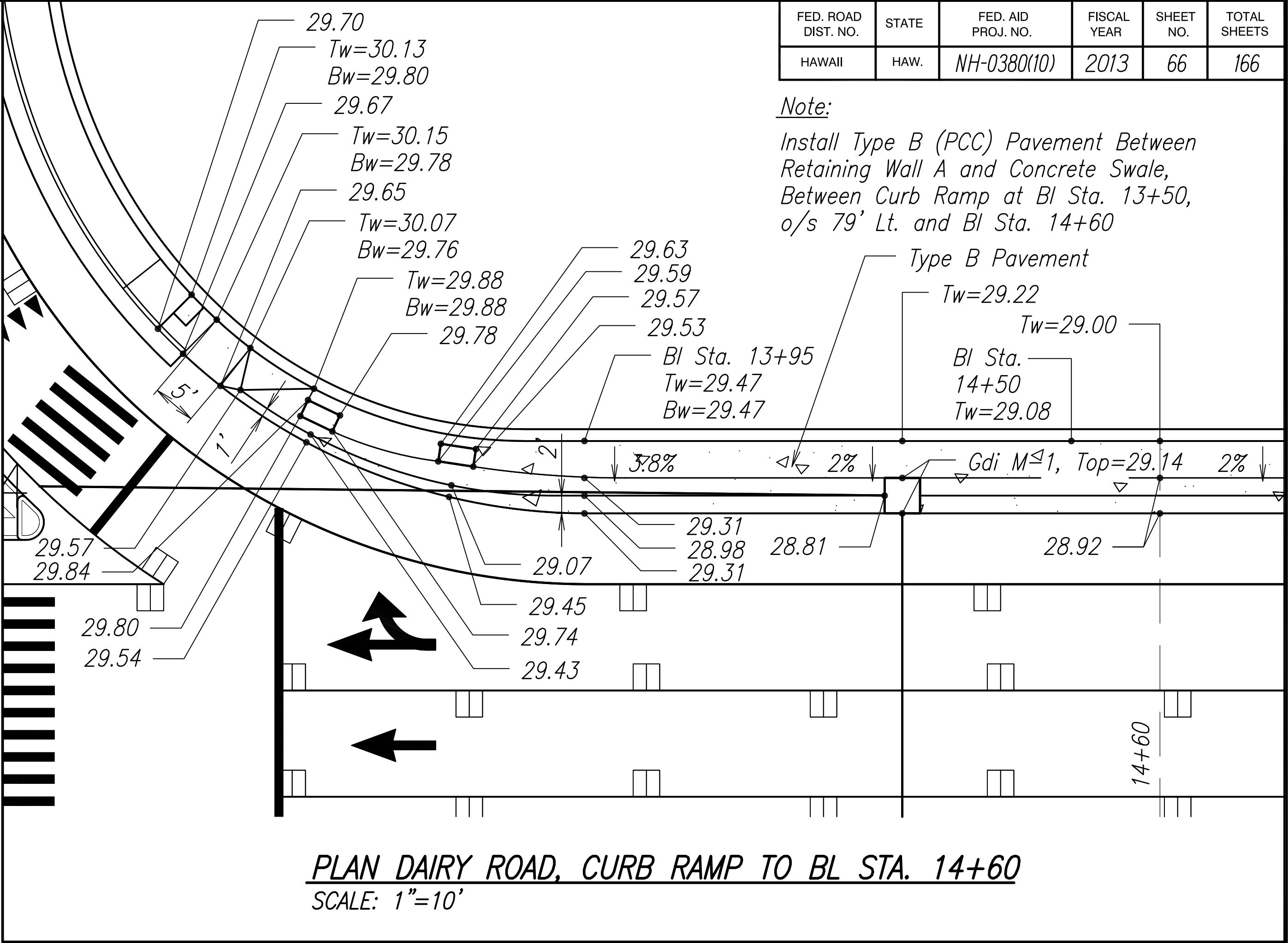
SHEET No. C-52 OF 93 SHEETS

"AS-BUILT"

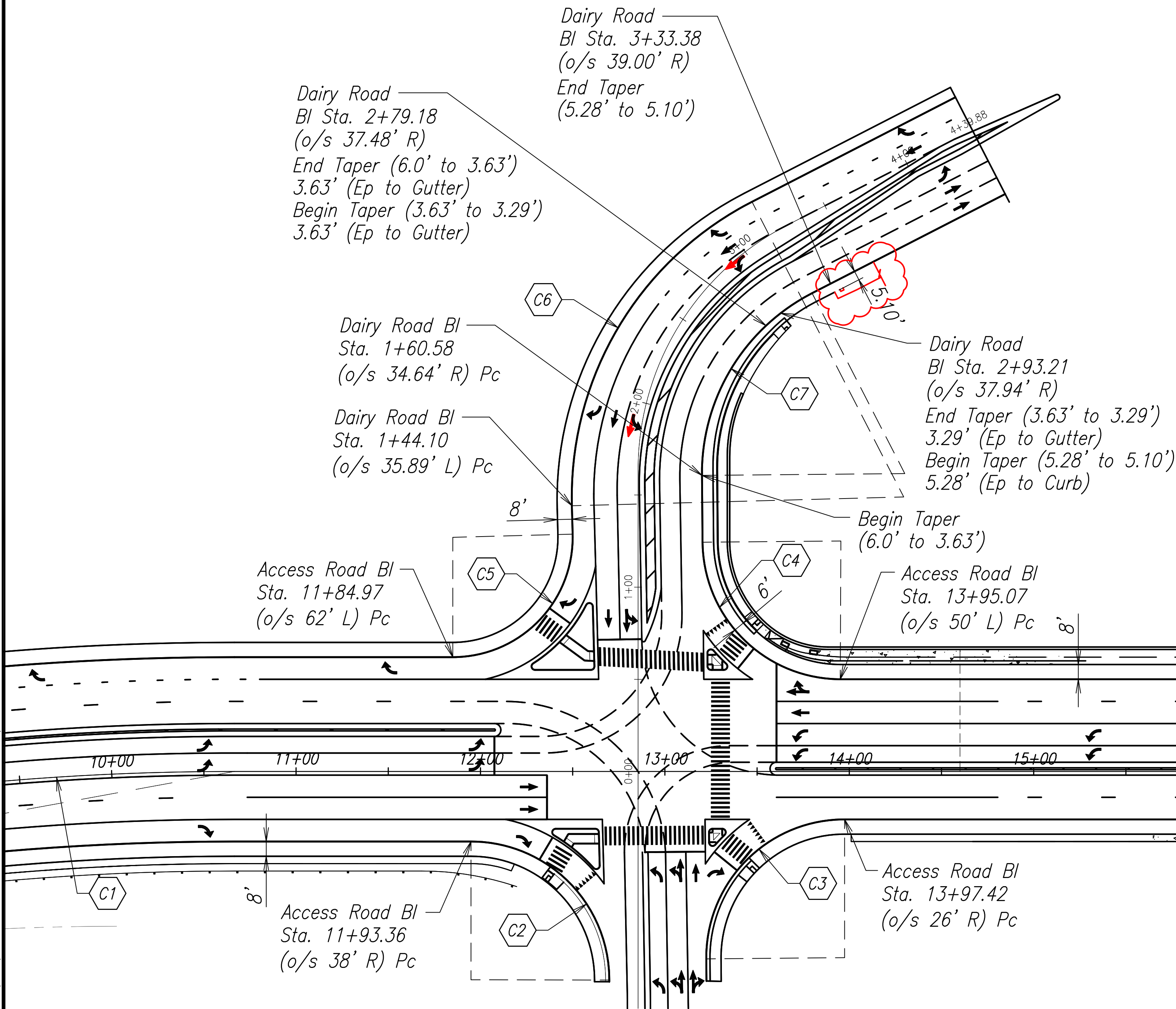
AS-BUILT DRAWINGS

FED. ROAD DIST. NO.	STATE	FED. AID PROJ. NO.	FISCAL YEAR	SHEET NO.	TOTAL SHEETS
HAWAII	HAW.	NH-0380(10)	2013	66	166

Note:
Install Type B (PCC) Pavement Between Retaining Wall A and Concrete Swale, Between Curb Ramp at Bl Sta. 13+50, o/s 79' Lt. and Bl Sta. 14+60



PLAN DAIRY ROAD, CURB RAMP TO BL STA. 14+60
SCALE: 1"=10'



INTERSECTION PLAN: DAIRY ROAD
SCALE: 1"=40'

CURVE TABLE							
CURVE	DELTA	LENGTH	RADIUS	TANGENT	CHORD	CHORD AZ	DESC.
C1	20°41'5"	541.52	1500.00	273.74	538.59	235°24'27"	BASELINE
C2	90°07'21"	117.97	75.00	75.16	106.18	290°48'40"	EP
C3	90°30'40"	56.14	75.00	75.67	106.54	20°29'39"	EP
C4	89°14'21"	57.16	75.00	74.01	105.36	110°37'06"	EP
C5	91°31'29"	57.16	65.00	66.75	93.14	199°59'15"	EP
C6	64°19'59"	202.11	180.00	113.21	191.66	186°23'30"	EP
C7	63°19'15"	121.57	110.00	67.83	115.47	186°53'52"	EP

STATE OF HAWAII
DEPARTMENT OF TRANSPORTATION
HIGHWAYS DIVISION

INTERSECTION PLAN
DAIRY ROAD

KAHULUI AIRPORT
ACCESS ROAD, PHASE I
Federal Aid Project No. NH-0380(10)
Scale: As Shown Date: February 2013

SHEET No. C-53 OF 93 SHEETS

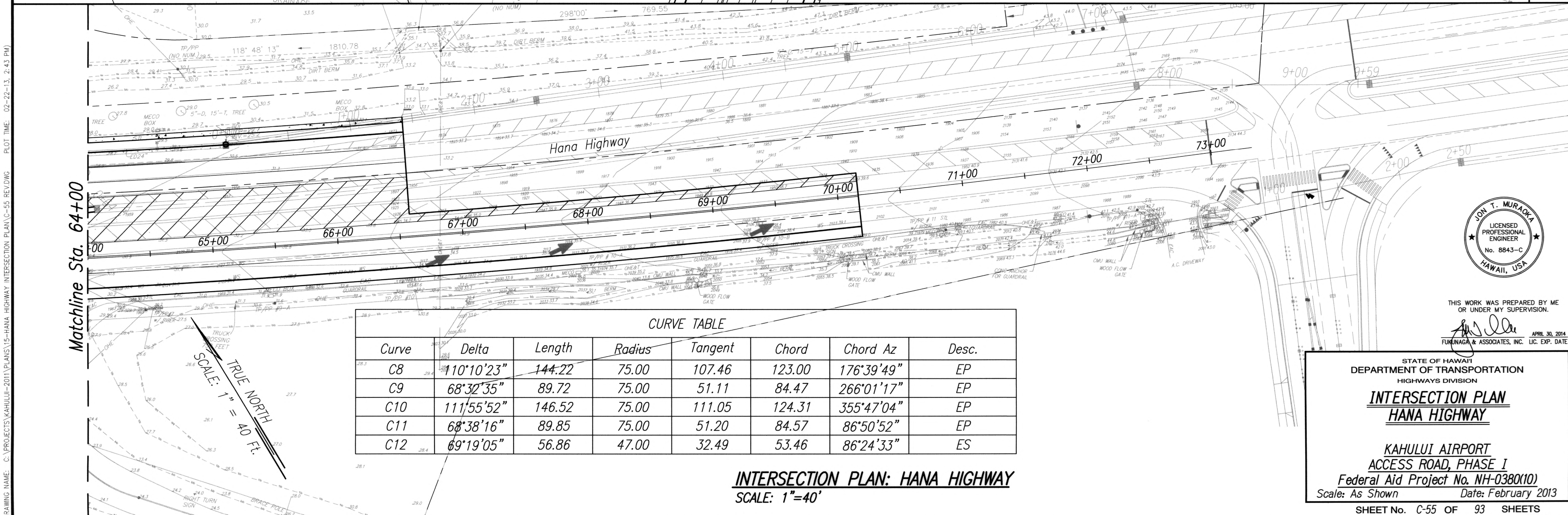
"AS-BUILT"

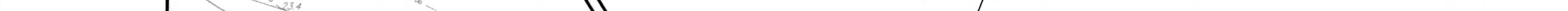
Access Road
BI Sta. 47+30.05

Access Road
BI Sta. 48+49.42

RAMP

AD





INTERSECTION PLAN: HANA HIGHWAY

SCALE: 1"=40'

ACCESS ROAD, PHASE I

Federal Aid Project No. NH-0380(10)

Scale: As Shown Date: February 2013

SHEET No. C-55 OF 93 SHEETS

SHEET No. C-55 OF 93 SHEETS