

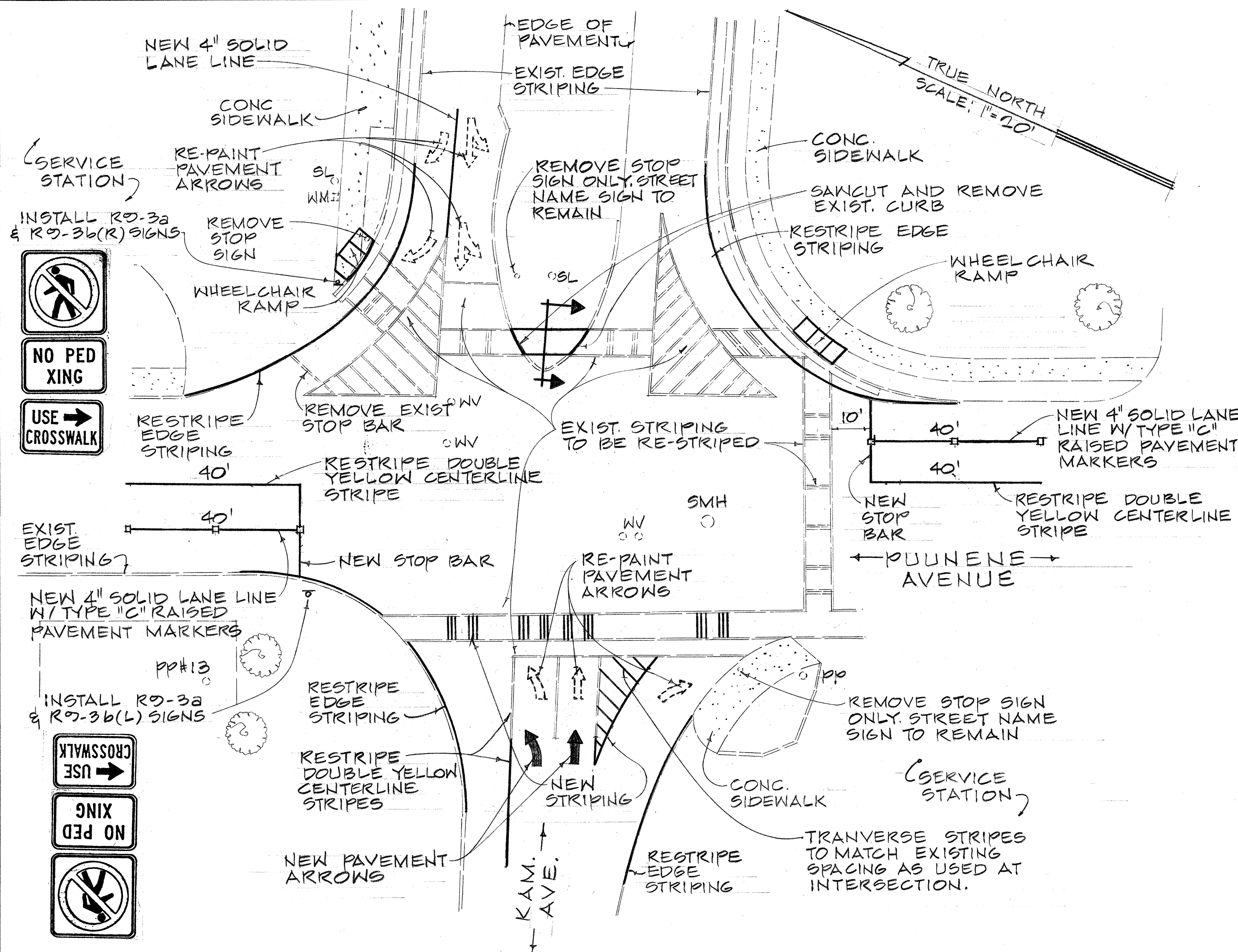
CONSTRUCTION NOTES

FED. ROAD DIST. NO.	STATE	PROJ. NO.	FISCAL YEAR	SHEET NO.	TOTAL SHEETS
HAWAII	HAW.	350A-01-76	1977	3	11

GENERAL NOTES:

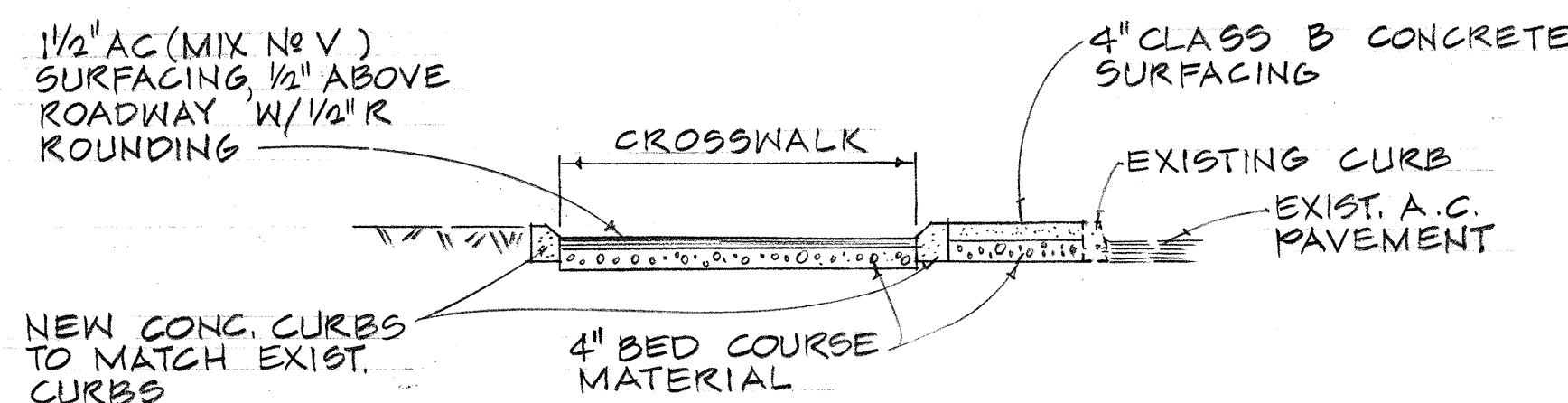
- ALL TRAFFIC SIGNAL CONTROLLER EQUIPMENT SHALL BE COMPLETELY WIRED IN THE CABINET & SHALL CONTROL THE TRAFFIC SIGNALS AS CALLED FOR IN THE PLANS.
- SIGNAL INDICATIONS DURING CLEARANCE INTERVAL:
 - IF A SIGNAL IS G OR \leftarrow G AND WILL REMAIN G OR \leftarrow G DURING THE NEXT PHASE, IT SHALL G OR \leftarrow G DURING THE CLEARANCE INTERVAL.
 - IF A SIGNAL IS G OR \leftarrow G AND WILL BECOME R OR EXTINGUISHED DURING THE NEXT PHASE, IT SHALL BE Y OR \times DURING THE CLEARANCE INTERVAL.
 - IF A SIGNAL IS R AND WILL REMAIN R OR BECOME G DURING THE NEXT PHASE, IT SHALL REMAIN R DURING THE CLEARANCE INTERVAL.
- A SOLID STATE COORDINATION UNIT SHALL BE FURNISHED AND WIRED IN THE CABINET.
- THE CONTROLLER SHALL BE EXPANDABLE TO 4 PHASES, WITH IMPLEMENTATION OF FUTURE PHASES REQUIRING THE IMPLEMENTATION OF PLUG-IN DEVICES, DISCONNECTION OF ANY JUMPERS AND APPROPRIATE REARRANGEMENT OF FIELD CONDUCTORS.

- LOCATIONS OF EXISTING UNDERGROUND STRUCTURES & UTILITIES, SUCH AS PIPELINES, CONDUIT CABLES, ETC., SHOWN ON PLANS ARE APPROXIMATE ONLY. IT IS NOT THE INTENT OF THESE PLANS TO SHOW THE EXACT LOCATION OF ALL UNDERGROUND UTILITIES & STRUCTURES. IT IS THE RESPONSIBILITY OF THE CONTRACTOR TO VERIFY THE LOCATIONS OF ALL EXISTING UTILITIES WITH THE RESPECTIVE OWNERS. EXISTING UTILITIES DAMAGED BY THE CONTRACTOR SHALL BE REPAIRED BY THE CONTRACTOR AT HIS OWN COST.
- THE LOCATIONS OF THE TRAFFIC SIGNAL STANDARDS, PEDESTRIAN PUSH BUTTONS, TRAFFIC CONTROLLERS, PULL-BOXES, CONDUITS AND LOOP DETECTORS SHALL BE STAKED OUT IN THE FIELD BY THE CONTRACTOR AND APPROVAL OF THE LOCATIONS OBTAINED FROM THE ENGINEER PRIOR TO CONSTRUCTION AND INSTALLATION.
- ALL TRAFFIC SIGNAL WORK SHALL CONFORM TO THE REQUIREMENTS OF "MANUAL ON UNIFORM TRAFFIC CONTROL DEVICES FOR STREETS AND HIGHWAYS," FEDERAL HIGHWAY ADMINISTRATION (1971) AND AMENDMENTS.
- REMOVAL OF EXISTING SIGNS SHALL ALSO INCLUDE THE REMOVAL OF POSTS AND FOUNDATIONS UNLESS OTHERWISE NOTED; COST SHALL BE INCIDENTAL TO OTHER ITEMS OF WORK.
- LOCATIONS OF TRAFFIC MARKINGS & MARKERS (LANE LINES, STOP LINES, CROSSWALKS, ETC.) SHOWN ON THE PLANS SHALL BE VERIFIED BY THE CONTRACTOR WITH THE ENGINEER PRIOR TO THE INSTALLATION OF THE TRAFFIC SIGNAL SYSTEM.
- REMOVAL OF PAVEMENT MARKINGS SHALL BE DONE BY THE CONTRACTOR; THE COST OF SUCH WORK SHALL BE INCIDENTAL TO OTHER ITEMS OF WORK.
- A SOLID #8 BARE COPPER WIRE SHALL BE PULLED WITH THE 12C#14 CONTROL CABLE FOR EQUIPMENT GROUND, COSTS SHALL BE INCIDENTAL TO THE INSTALLATION OF THE 12C#14 CABLE.
- PAVEMENT MARKINGS SHALL CONFORM TO THE "MANUAL ON UNIFORM TRAFFIC CONTROL DEVICES FOR STREETS AND HIGHWAYS," 1971, AND AS SHOWN ON THE PLANS.
- STOP SIGNS SHALL BE REMOVED ONLY AFTER THE TRAFFIC SIGNALS ARE PLACED IN OPERATION. REMOVED SIGNS AND POSTS SHALL BE DELIVERED TO STATE MAINTENANCE BASE YARD AT HANSEN ROAD.



STRIPING AND SIGNING PLAN

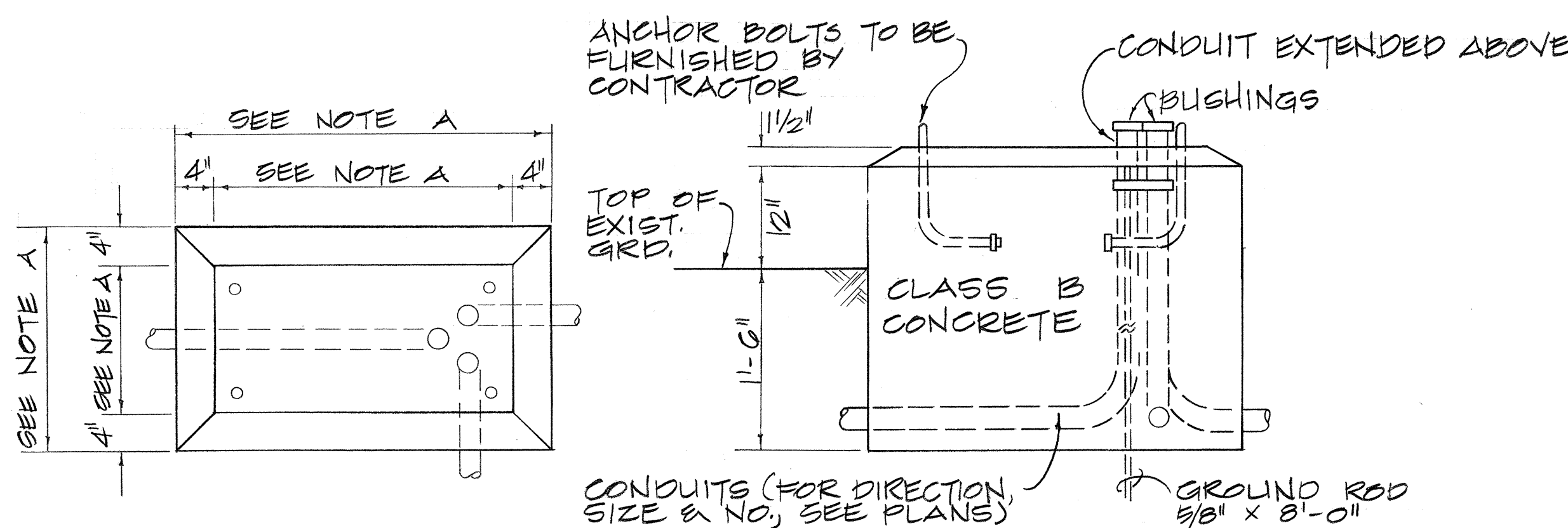
SCALE: 1" = 20'



SECTION

SCALE: 1" = 5'

- NOTES:
- PROVIDE SMOOTH, NEAT JOINT BETWEEN NEW AND EXISTING CURBS.
 - COST OF MEDIAN MODIFICATION IS INCIDENTAL TO WHEELCHAIR RAMP.



PLAN ELEVATION CONCRETE BASE FOR CONTROLLER CABINET

- NOTES:
- DIMENSIONS TO BE DETERMINED BY THE SIZE OF THE CONTROLLER CABINET TO BE FURNISHED UNDER THIS CONTRACT.
 - DETAILS OF CONDUITS, ANCHOR BOLTS, ETC., ARE APPROXIMATE ONLY. EXACT DETAILS SHALL BE SECURED BY THE CONTRACTOR FROM MANUFACTURER.



THIS WORK WAS PREPARED BY ME
OR UNDER MY SUPERVISION
Theodore S. Kawahara
Signature

STATE OF HAWAII DEPARTMENT OF TRANSPORTATION HIGHWAYS DIVISION	
PUUNENE AVENUE TRAFFIC SIGNALS AT KAMEHAMEHA AVENUE	
PROJ. NO. 350A-01-76	
STRIPING PLAN, NOTES & DETAILS	
SCALE: AS NOTED	DATE: JAN. 31, 1977
SHEET NO. 1 OF 1 SHEETS	