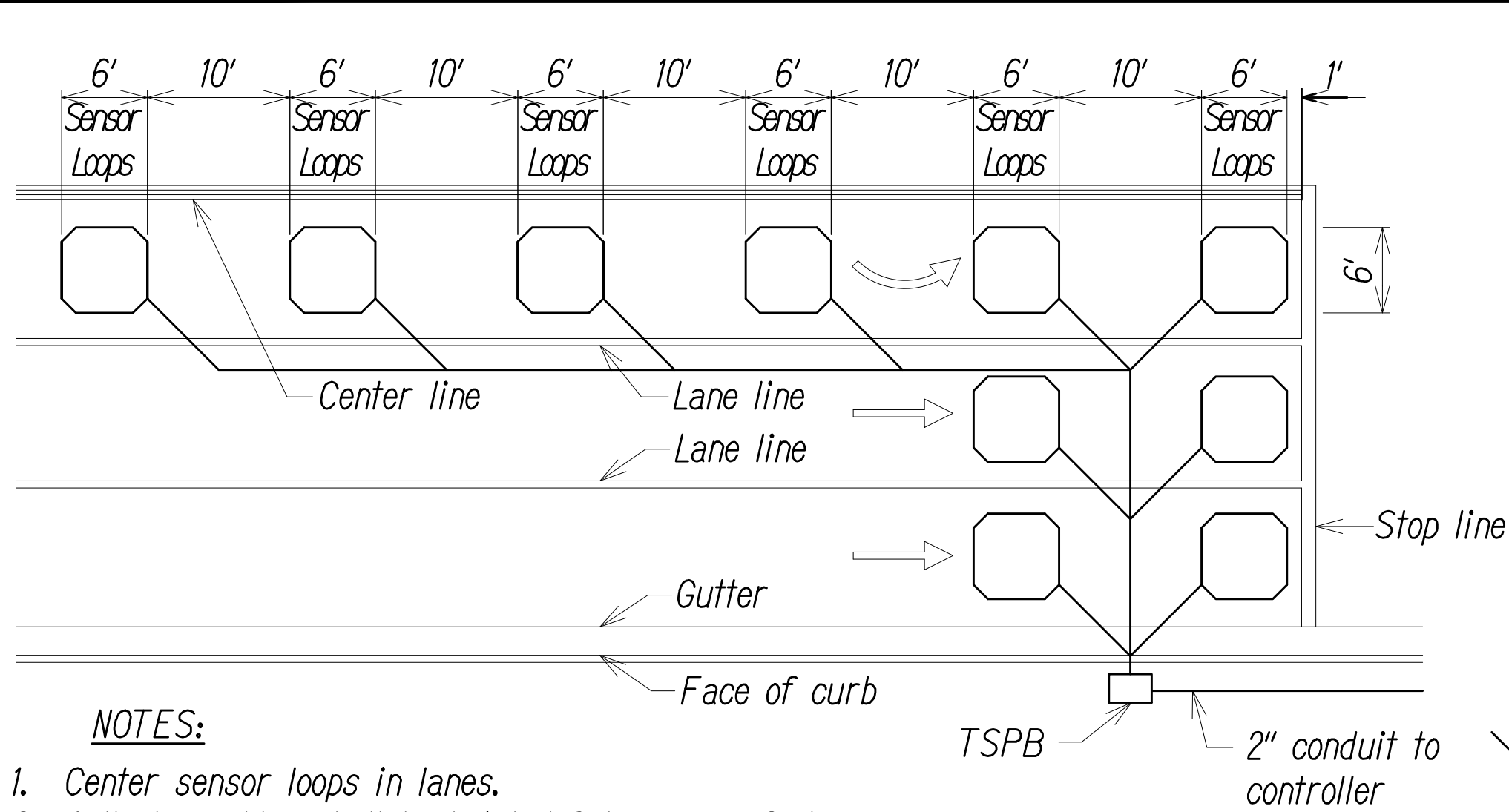
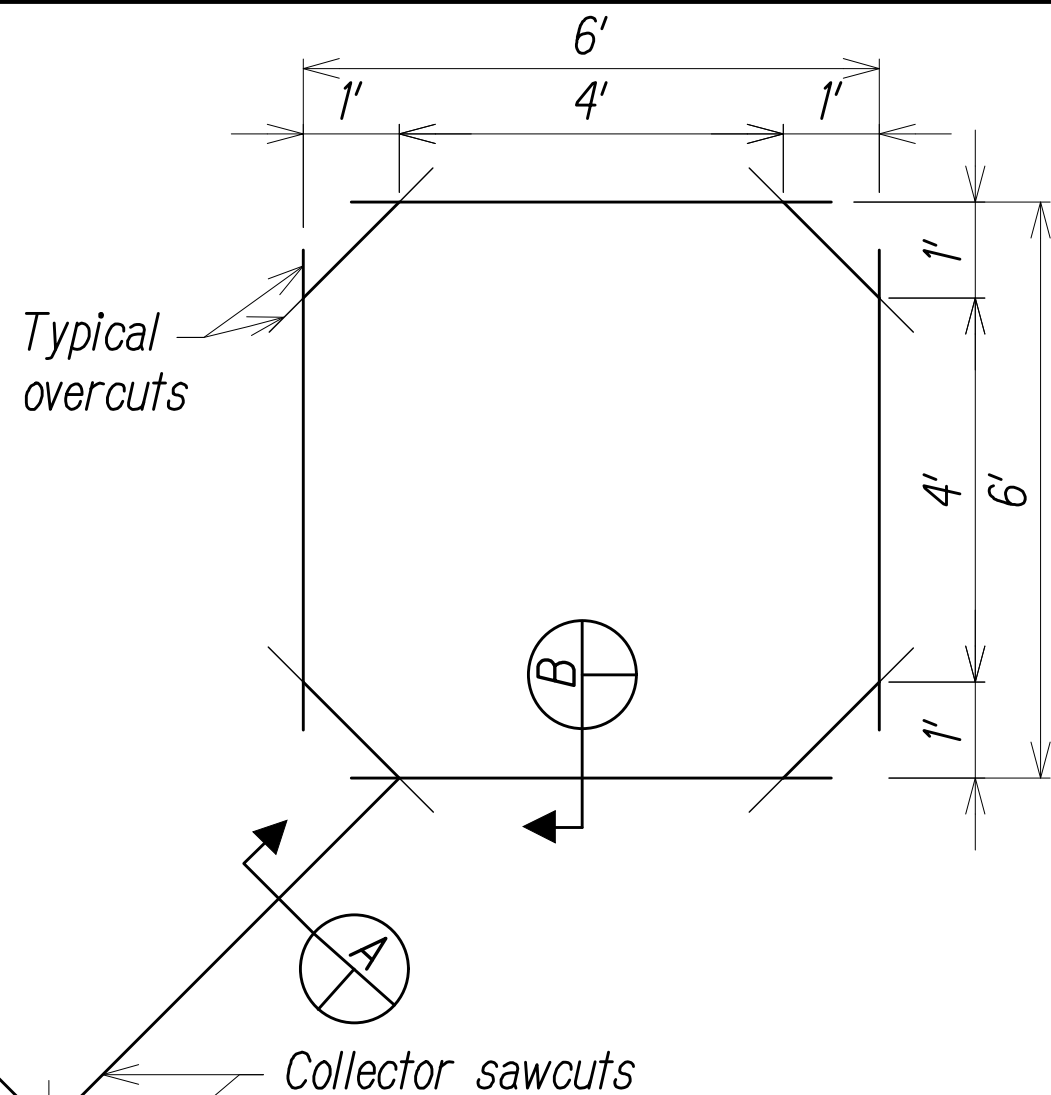


DIST. NO.	STATE	PROJ. NO.	FISCAL YEAR	SHEET NO.	TOTAL SHEETS
MAUI	HAW.	3400A-01-20	2024	22	35



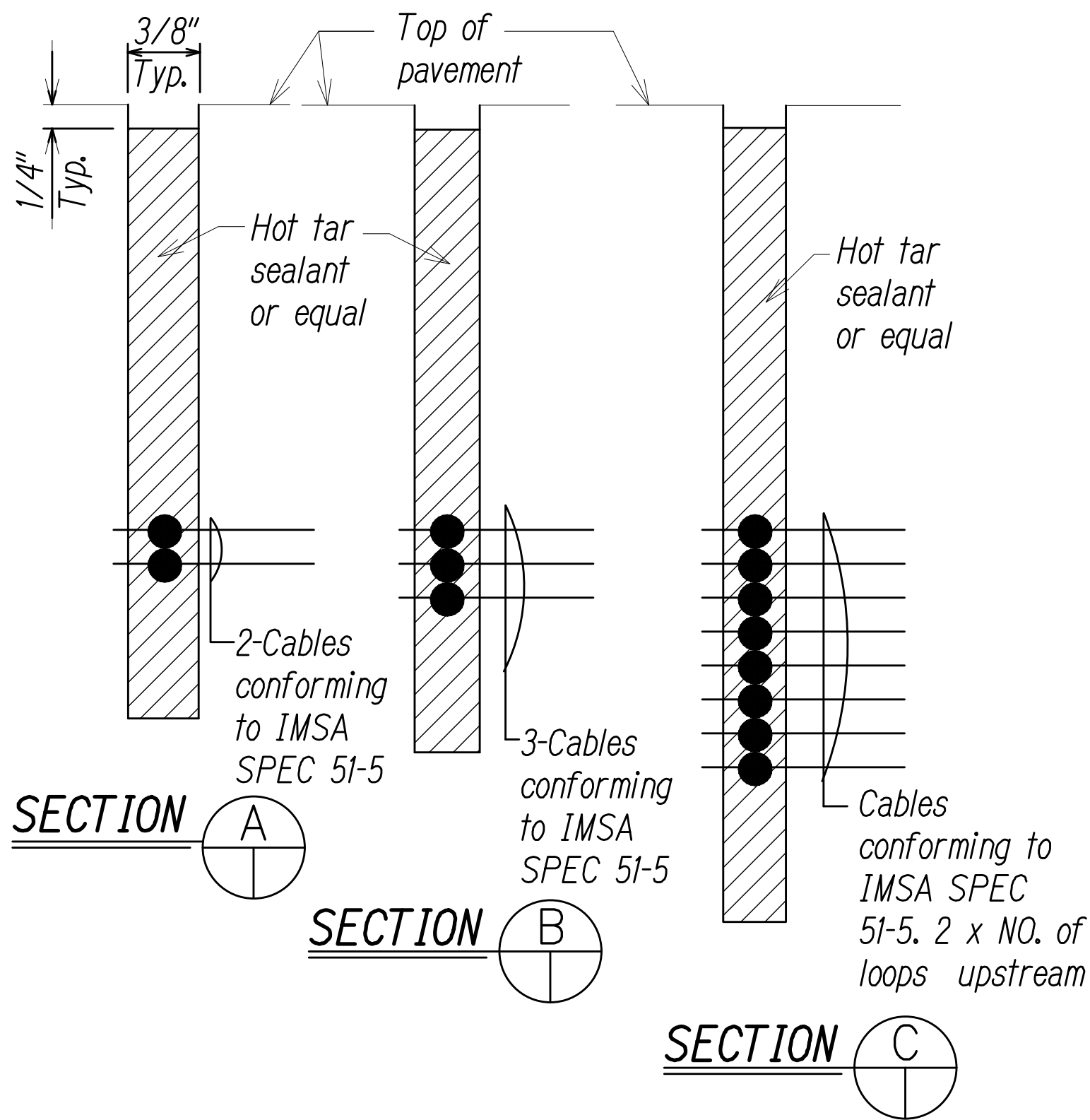
- NOTES:**
- Center sensor loops in lanes.
 - Collector cables shall be twisted 2 turns per foot.
 - Number of loops and locations vary. See project plans.
 - Number and locations of collector sawcuts may be varied in the field to suit.

TYPICAL SENSOR LOOP LAYOUT
Not to scale



- NOTES:**
- Length of overcuts shall be kept to a minimum. All overcuts shall be backfilled with hot tar.

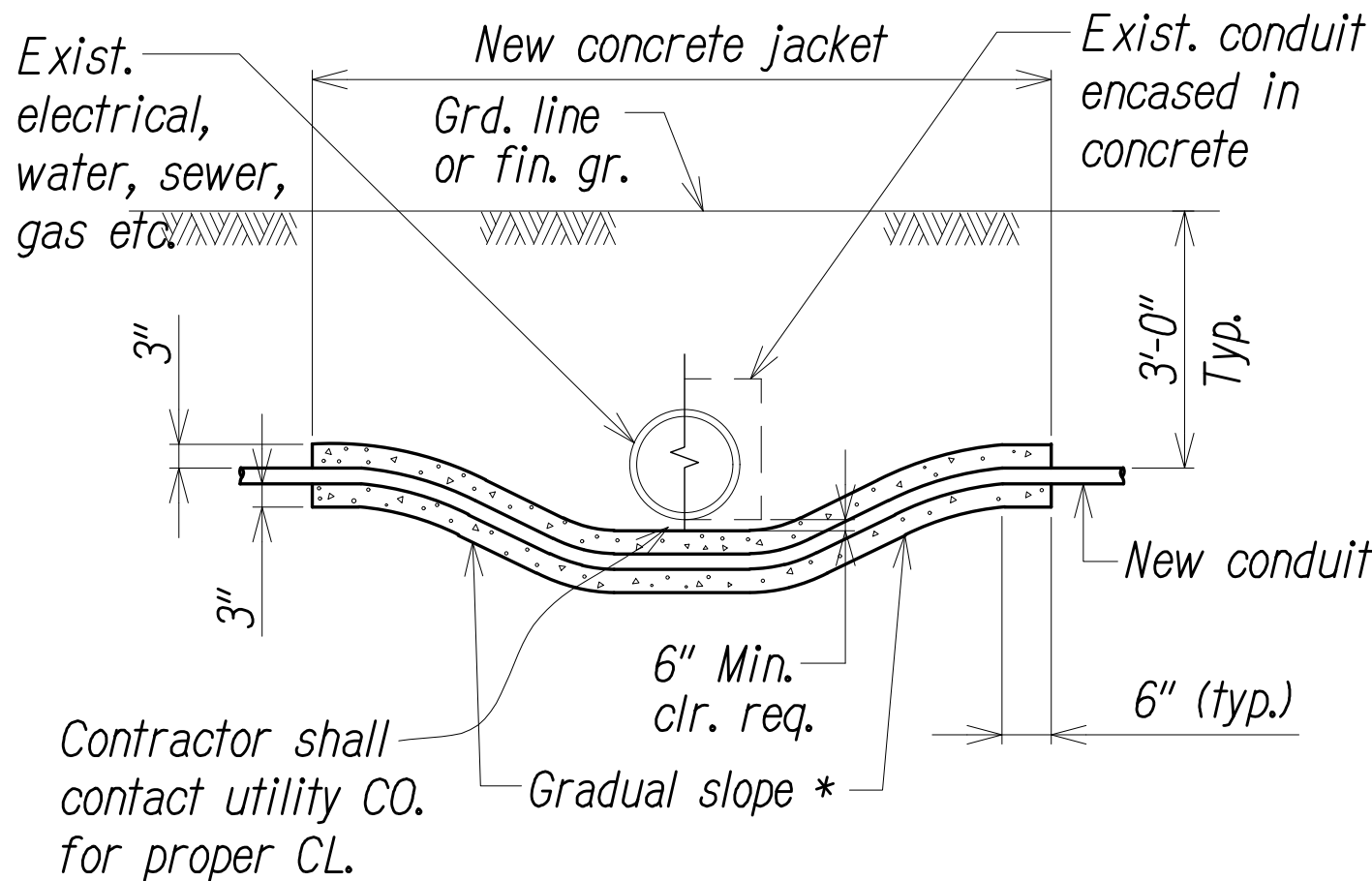
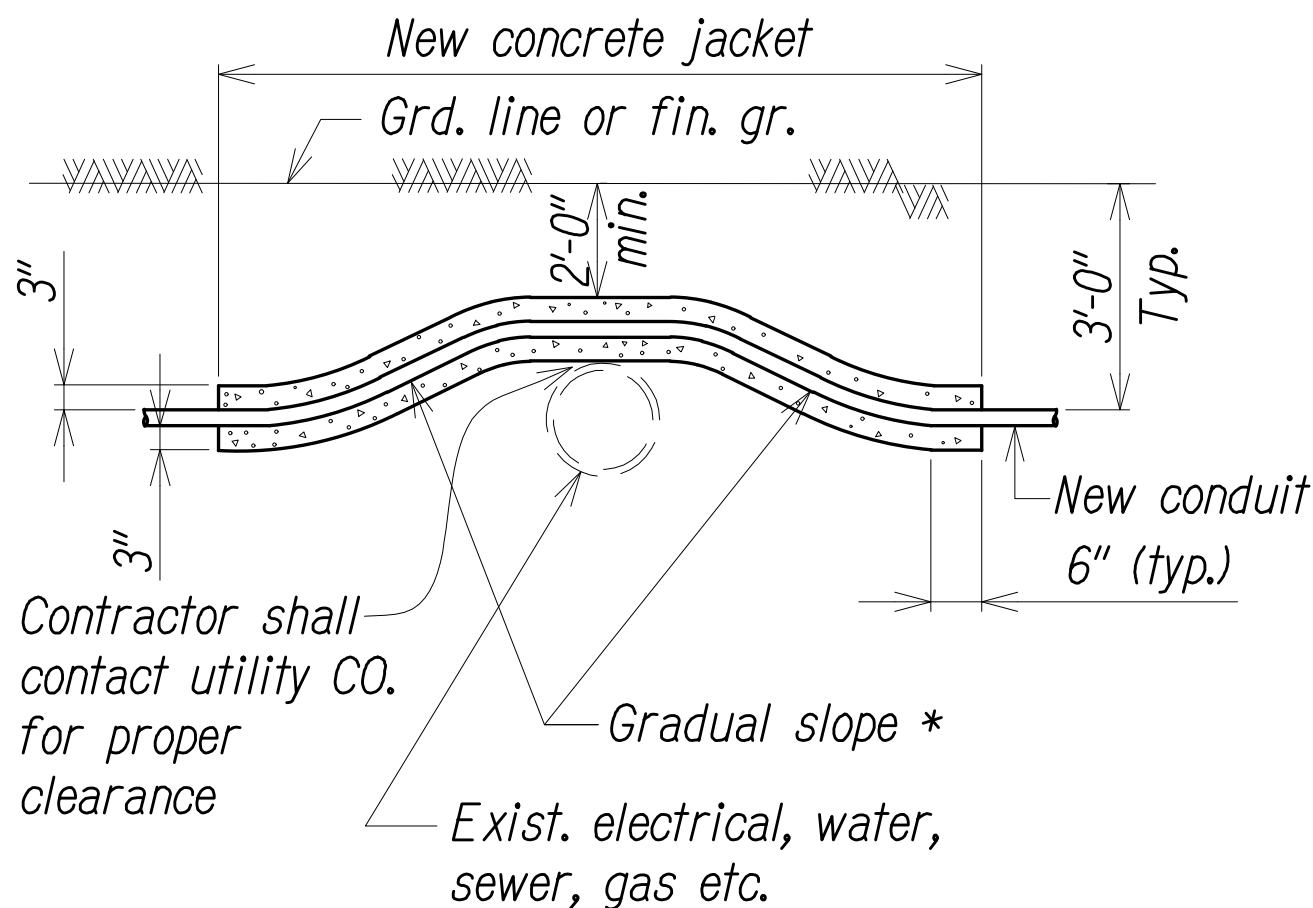
TYPICAL SENSOR LOOP SAWCUT DETAIL
Not to scale



SECTION A

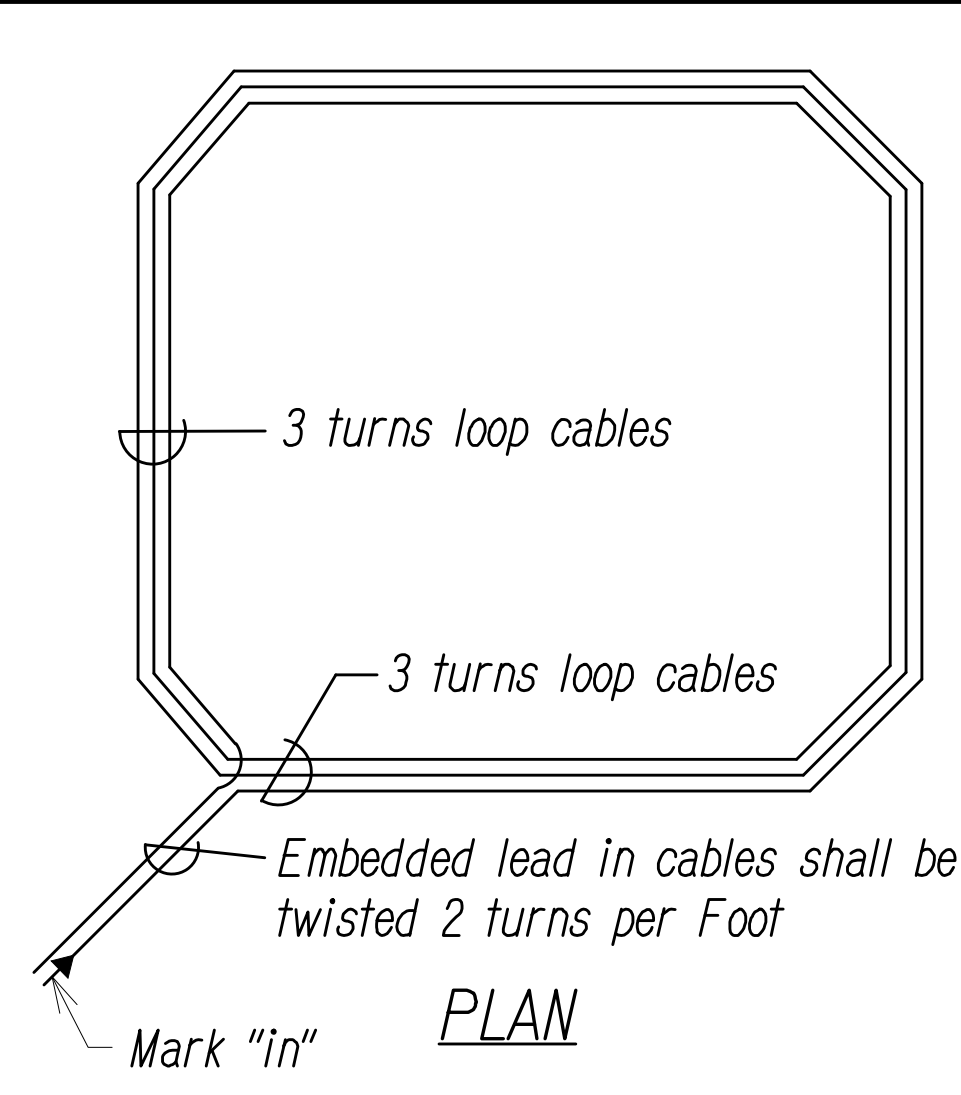
SECTION B

SECTION C

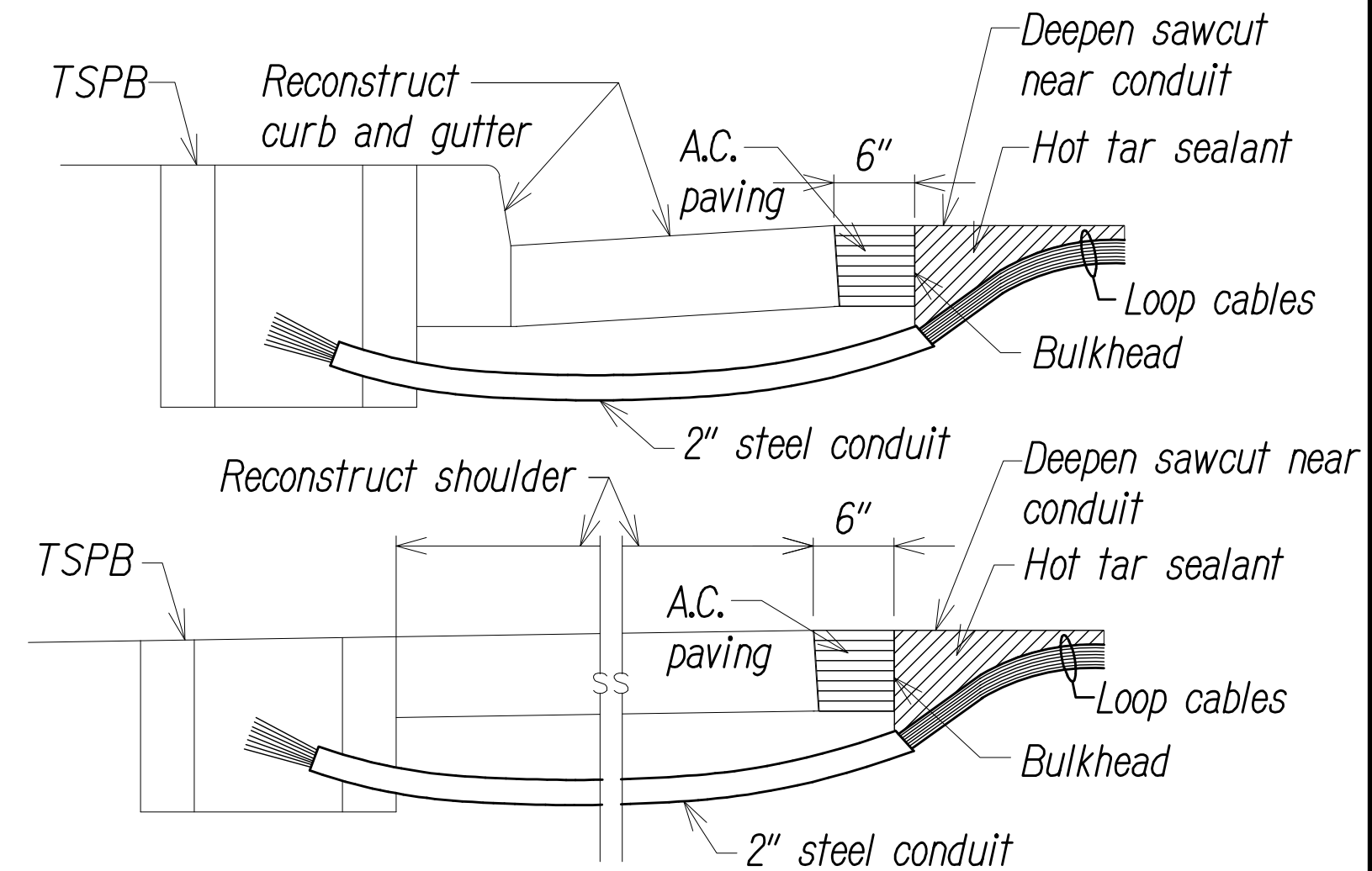


* To be determined by State Electrical Inspector/Engineer

CONDUIT BY-PASS DETAIL AT VARIOUS UTILITIES
Not To Scale

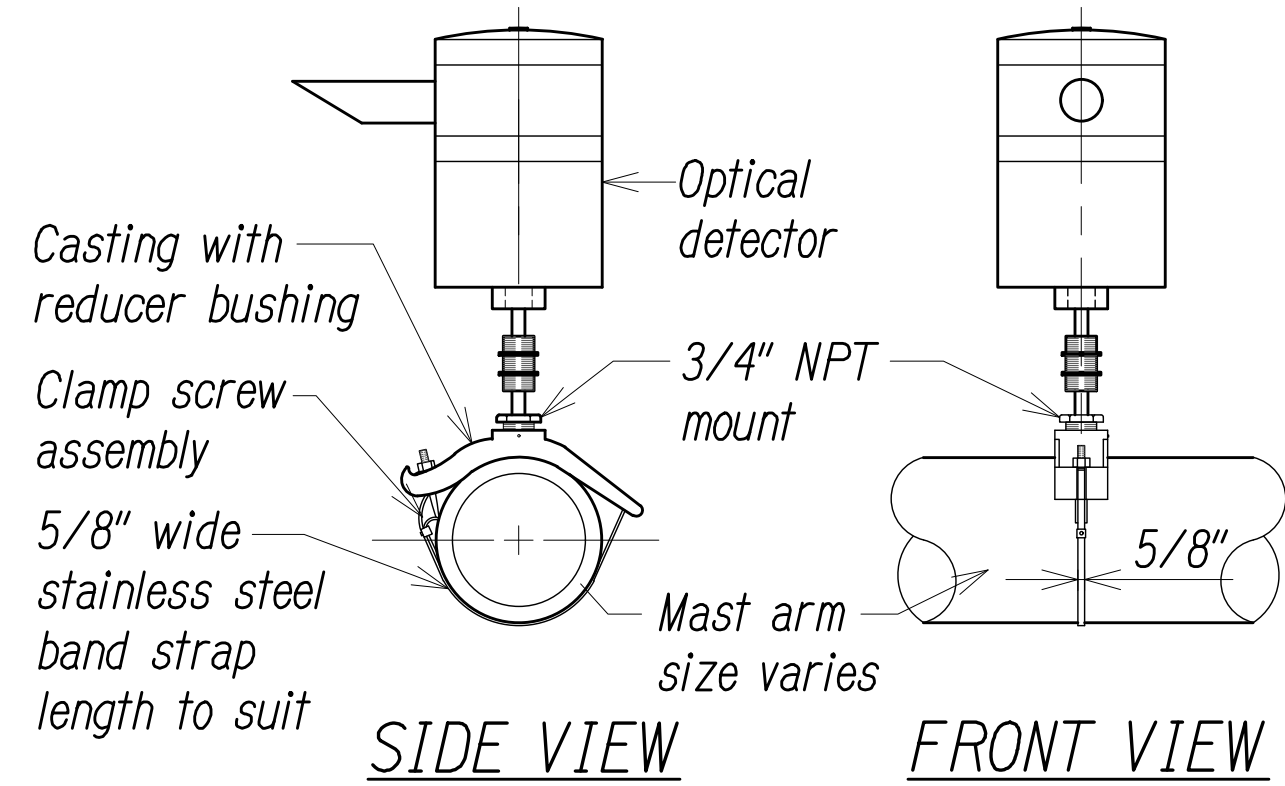


TYPICAL SENSOR LOOP WIRING DIAGRAM
Not to scale



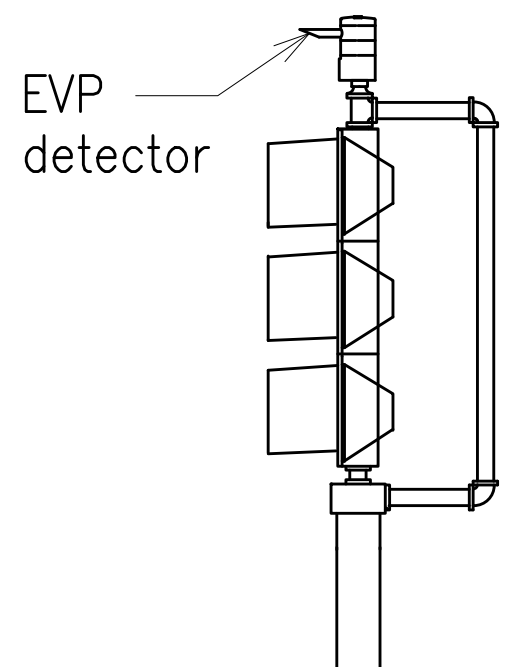
- NOTES ON CONSTRUCTION AT END OF SAWCUT**
- Seal roadway end of conduit after installation of conductors.
 - Install bulkhead across conduit trench.
 - Place hot tar in sawcut.
 - Backfill over conduit with new A.C.
 - Reconstruct curb and gutter as required.

DETAIL OF SENSOR LOOP INSTALLATION AT EDGE OF ROADWAY
Not to scale

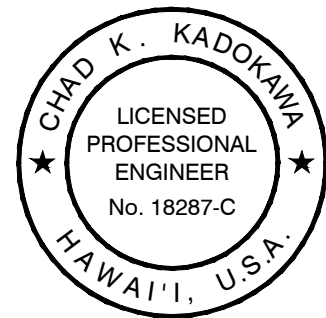


- NOTES:**
- Optical detector shall be "Model 711 preemption detector", or approved equal, unless noted otherwise in the special provisions.
 - Support saddle assembly shall be "ASTRO MINI-BRAC, AB-0132-29", or approved equal, unless noted otherwise in the special provisions.

OPTICAL DETECTOR FOR MAST ARM MOUNTING
Not to scale



POST TOP TP-EVP MOUNTING
Not to scale



EXP. 4/30/26
THIS WORK WAS PREPARED BY ME OR UNDER MY SUPERVISION AND CONSTRUCTION OF THIS PROJECT WILL BE UNDER MY OBSERVATION AS DEFINED IN SECTION 16-115-2, HAWAII ADMINISTRATIVE RULES, DEPARTMENT OF COMMERCE AND CONSUMER AFFAIRS, STATE OF HAWAII, PROFESSIONAL ENGINEERS, ARCHITECTS, SURVEYORS AND LANDSCAPE ARCHITECTS.

CHAD K. KADOKAWA
LICENSED PROFESSIONAL ENGINEER
No. 18287-C
ATA AUSTIN, TSUTSUMI & ASSOCIATES, INC.
REGISTERED PROFESSIONAL ENGINEER
HAWAII, U.S.A.

LICENSE EXPIRES: APRIL 30, 2026

1
2
LINE IS 2 INCHES AT FULL SIZE
(IF NOT 2-INCHES : Scale Accordingly)

STATE OF HAWAII
DEPARTMENT OF TRANSPORTATION
HIGHWAYS DIVISION

TRAFFIC SIGNAL DETAILS - 1

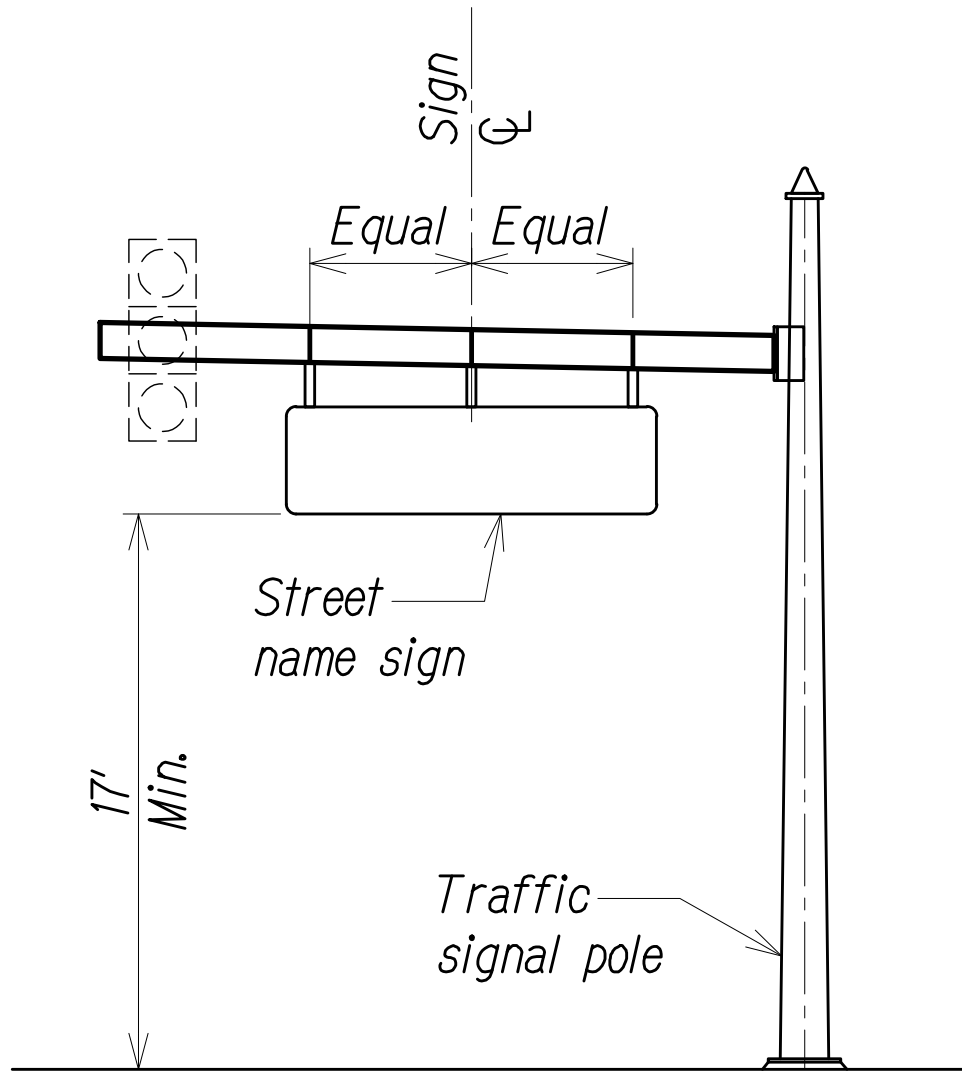
*Kahului Beach Road Intersection
Improvements at Kanaloa Avenue
Project No. 3400A-01-20*

Scale: As Shown Date: July 2024

SHEET No. TS-4 OF 6 SHEETS

ORIGINAL PLAN	DATE
SURVEY PLOTTED BY	
DRAWN BY	
TRACED BY	
DESIGNED BY	
QUANTITIES BY	
CHECKED BY	
NOTE BOOK	
No.	

DIST. NO.	STATE	PROJ. NO.	FISCAL YEAR	SHEET NO.	TOTAL SHEETS
MAUI	HAW.	3400A-01-20	2024	24	35



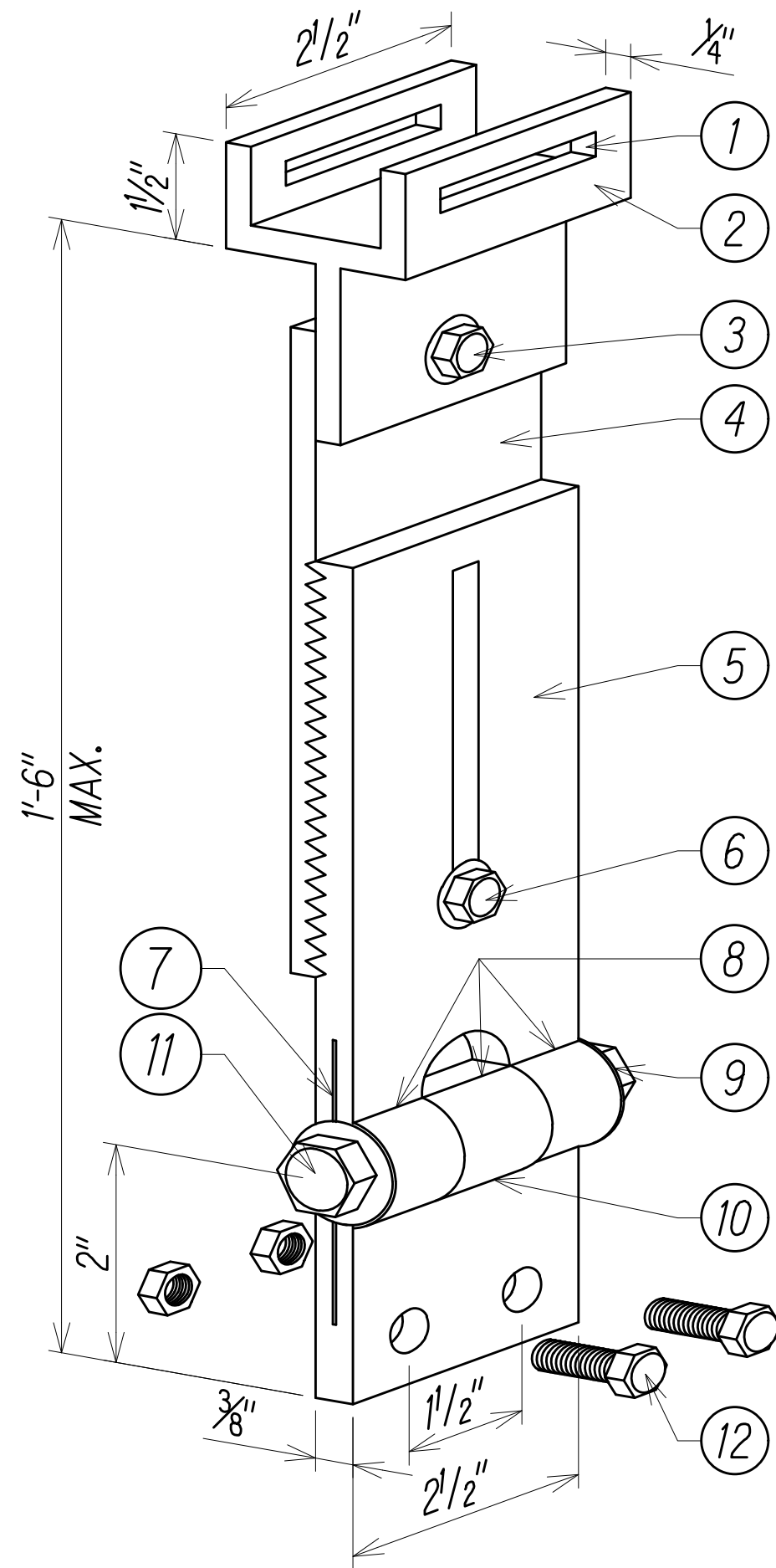
MAST ARM MOUNTING INSTALLATION

(STD. Plan TE-13, Revised 04/29/16)

Not To Scale

NOTES:

- Font size and spacing shall conform to Federal Highway Administration Standard Highway Sign convention.
- Text legend shall be as specified in contract documents.
- Legend shall be the same on both sides of sign.
- Colors: Legend - White
Background - Green
- Number of swing sign bracket per sign:
3 brackets - 7' or less wide (show above)
3 brackets - 7' or less wide (show above)
- Adjust swing sign bracket lengths to level sign.



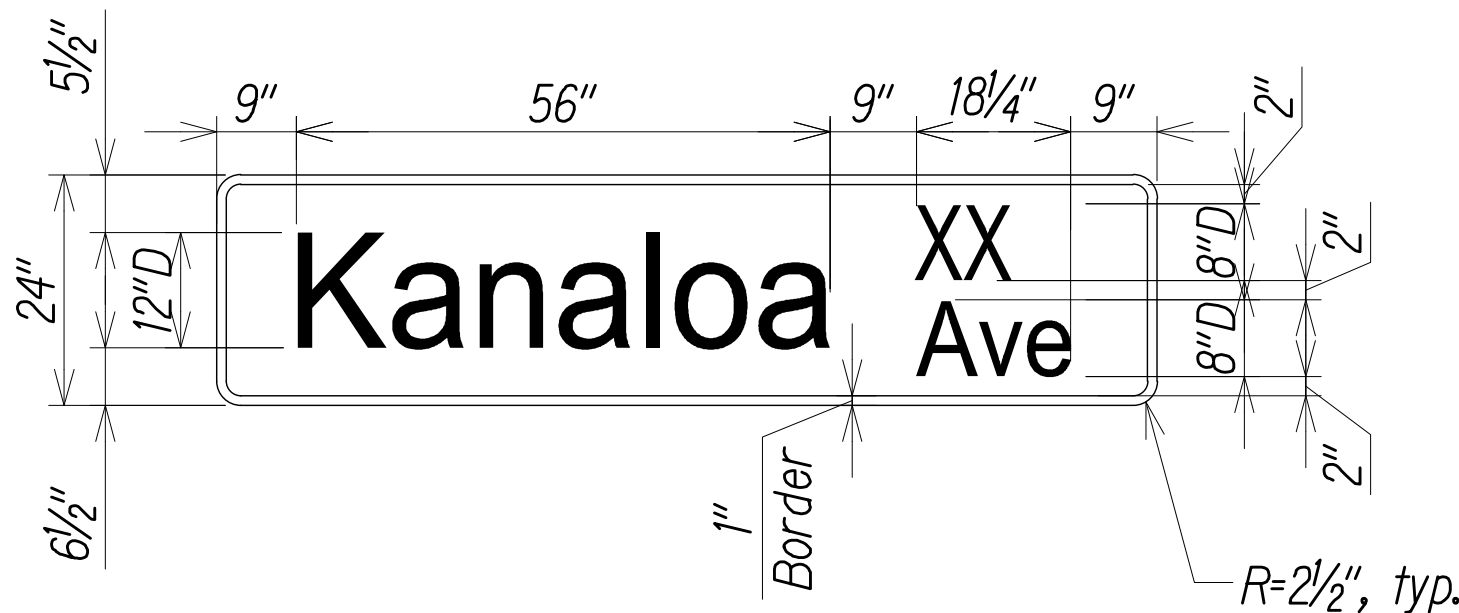
NOTES:

- Dimensions may vary slightly.
- Aluminum 6061t6 alloy unless otherwise specified.

ADJUSTABLE LENGTH SWING SIGN BRACKET

(STD. Plan TE-13, Revised 04/29/16)

Not To Scale



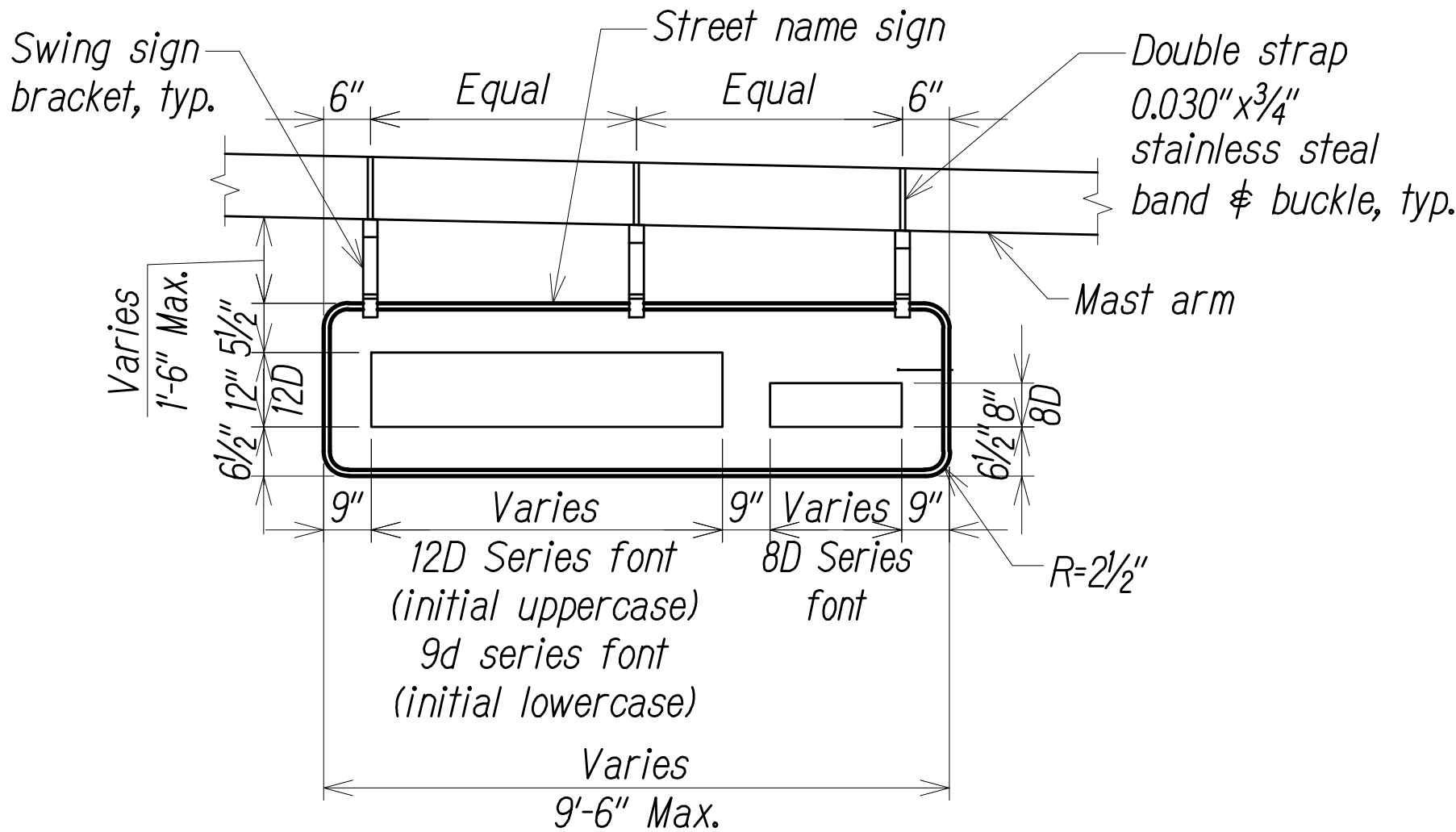
COLOR: Legend, border - White (retroreflective)
Background - Green (retroreflective)
Background (alternate) - Blue or brown (retroreflective)

NOTES:

- Street name signs shall have white message and border on green background.
- All sign faces shall be completely reflectorized with Type "B" reflective sheeting.
- The sign shall be in conformance with the requirements of Section 712.20 of the Standard Specification.

STREET NAME SIGN DETAILS

Not To Scale

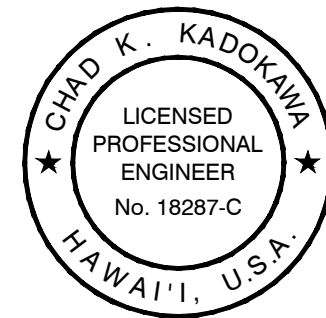


STREET NAME SIGN ON MAST ARM

STD. Plan TE-13, Revised 04/29/16)

Not To Scale

DESIGNED BY	DATE
DRAWN BY	
CHECKED BY	
NOTED BY	
QUANTITIES BY	
NO.	



EXP. 4/30/26
THIS WORK WAS PREPARED BY ME OR UNDER MY SUPERVISION AND CONSTRUCTION OF THIS PROJECT WILL BE UNDER MY OBSERVATION AS DEFINED IN SECTION 16-115-2, HAWAII ADMINISTRATIVE RULES, DEPARTMENT OF COMMERCE AND CONSUMER AFFAIRS, STATE OF HAWAII, PROFESSIONAL ENGINEERS, ARCHITECTS, SURVEYORS AND LANDSCAPE ARCHITECTS.
CHAD K. KADOKAWA
LICENSE EXPIRES: APRIL 30, 2026
ATA AUSTIN, TSUTSUMI & ASSOCIATES, INC.
LINE IS 2 INCHES AT FULL SIZE
(IF NOT 2-INCHES : Scale Accordingly)

STATE OF HAWAII
DEPARTMENT OF TRANSPORTATION
HIGHWAYS DIVISION

TRAFFIC SIGNAL DETAILS - 3

Kahului Beach Road Intersection
Improvements at Kanaloa Avenue
Project No. 3400A-01-20

Scale: As Shown Date: July 2024

SHEET No. TS-6 OF 6 SHEETS