

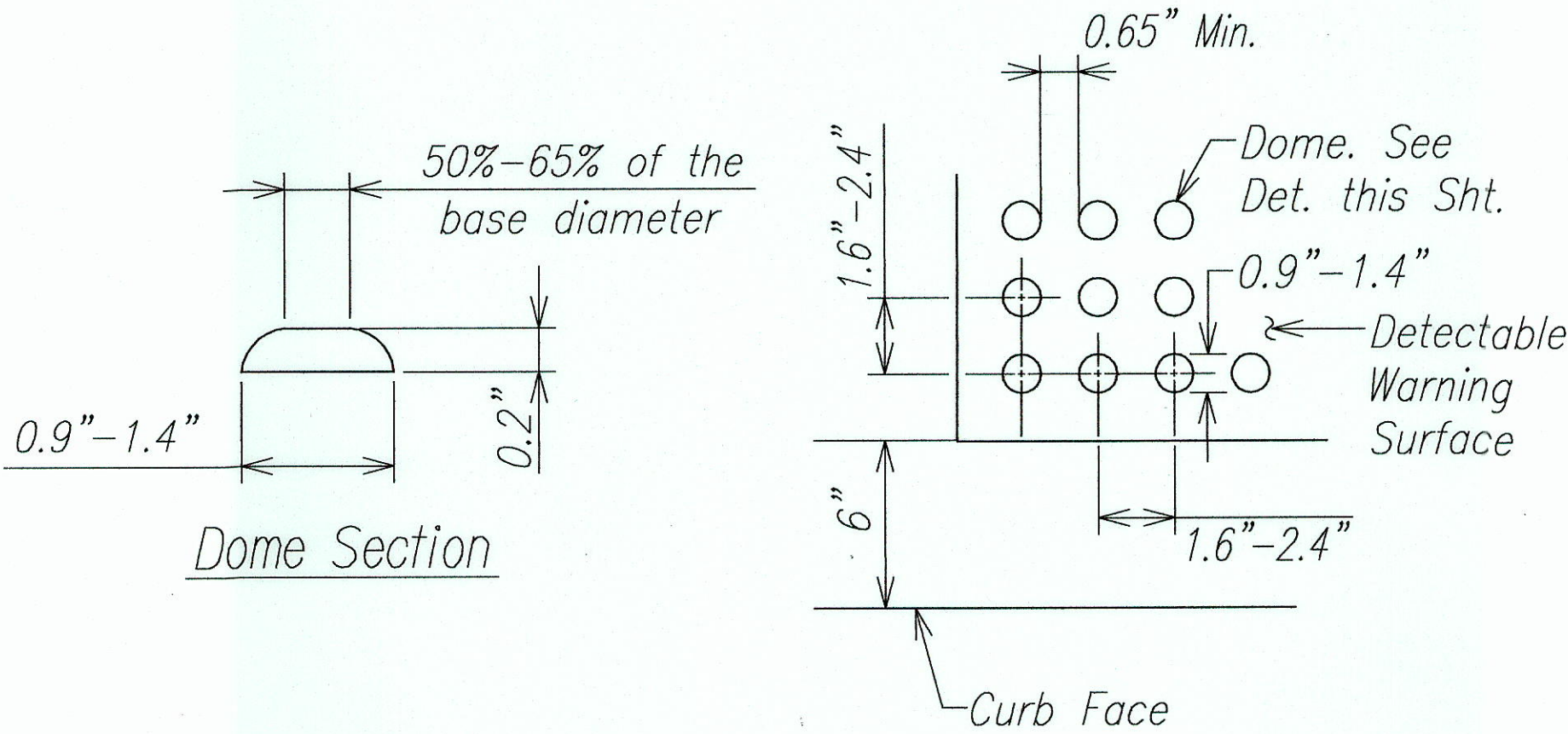




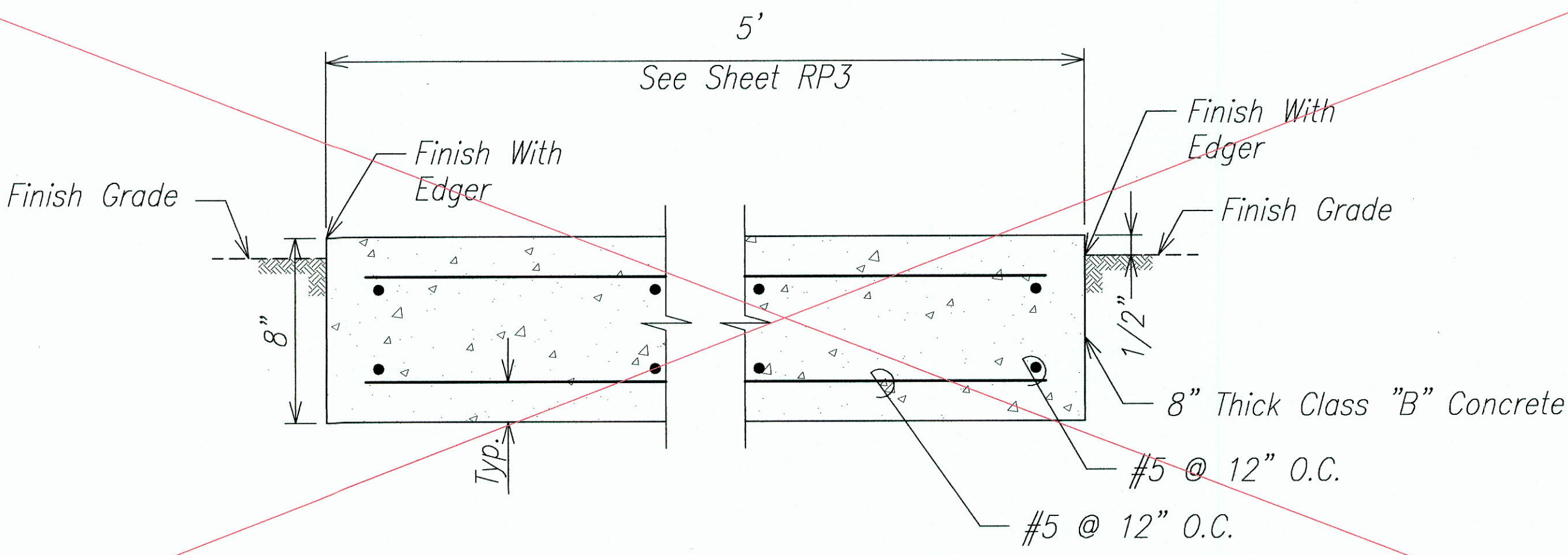
FED. ROAD DIST. NO.	STATE	FED. AID PROJ. NO.	FISCAL YEAR	SHEET NO.	TOTAL SHEETS
HAWAII	HAW.	BR-STP-3400(5)	2012	18	108

NOTES:

1. Detectable Warnings Shall Be 24 Inches in the Direction of Travel and Extend the Full Width of the Curb Ramp or Flush Surface (Does Not Include Flares).
2. Truncated Domes in a Detectable Warning Surface Shall Have a Base Diameter Of 0.9 Inches Minimum and 1.4 Inches Maximum, a Top Diameter of 50 Percent of the Base Diameter Minimum to 65 Percent of the Base Diameter Maximum, a Height of 0.2 Inches, a Center-to-Center Spacing of 1.6 Inches Minimum and 2.4 Inches Maximum, and a Base-to-Base Spacing of 0.65 Inch Minimum, Measured Between the Most Adjacent Domes on a Square Grid.
3. Domes Shall be Aligned on a Square Grid in the Predominant Direction of Travel to Permit Wheels to Roll Between the Domes.
4. The Detectable Warning Shall be "Safety Yellow".
5. The Material Used to Provide Visual Contrast Shall be an Integral Part of the Detectable Warning Surface.
6. The Detectable Warning Shall be Located so that the Edge Nearest the Curb Line or Other Potential Hazard is 6 to 8 Inches From the Curb Line or Other Potential Hazard.



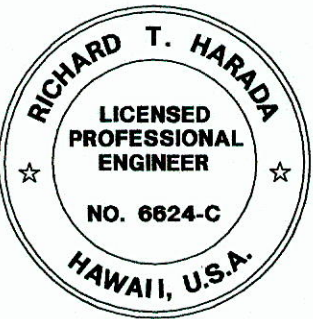
Detectable Warning Details  
Not to Scale



Reinforced Concrete Sidewalk Detail  
Not to Scale

Deleted

ORIGINAL PLAN	SURVEY PLOTTED BY	DATE
NOTE BOOK	DRAWN BY	
No.	DESIGNED BY	
	QUANTITIES BY	
	CHECKED BY	



THIS WORK WAS PREPARED BY ME  
OR UNDER MY SUPERVISION.  
*Richard T. Harada*  
WILSON OKAMOTO CORPORATION LIC. EXP. DATE

STATE OF HAWAII  
DEPARTMENT OF TRANSPORTATION  
HIGHWAYS DIVISION

MISCELLANEOUS DETAILS

WAIERU BEACH ROAD  
REHABILITATION OF IAO STREAM BRIDGE  
Federal Aid Project No. BR-STP-3400(5)

Date: October 2012

SHEET No. D2 OF 2 SHEETS

"AS-BUILT"