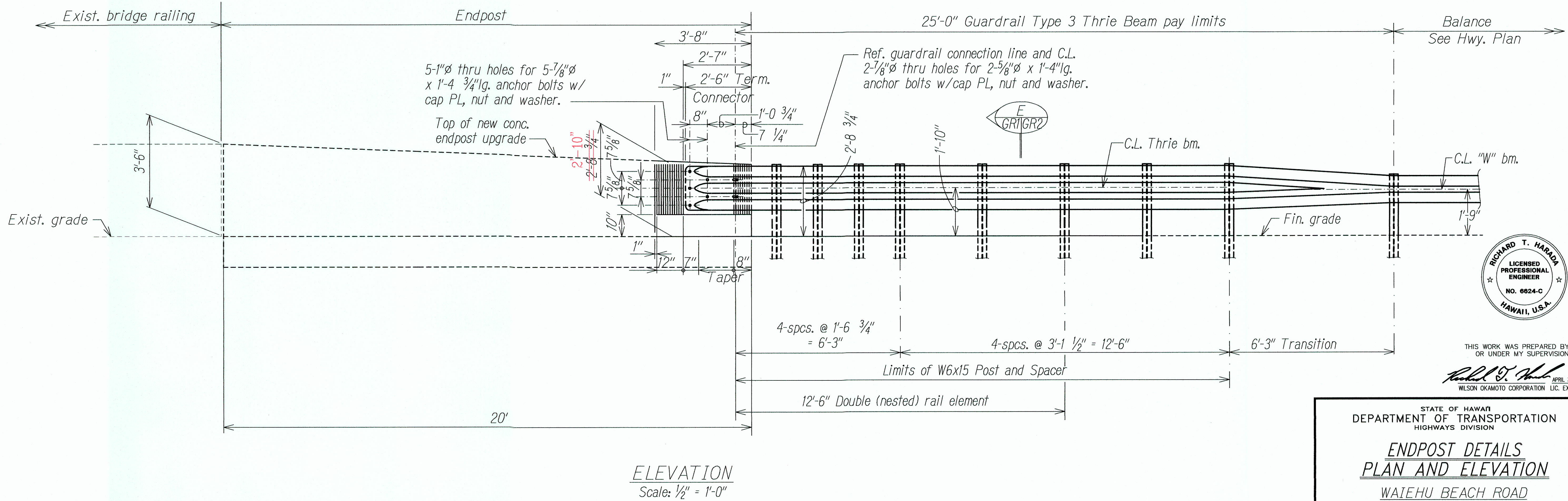
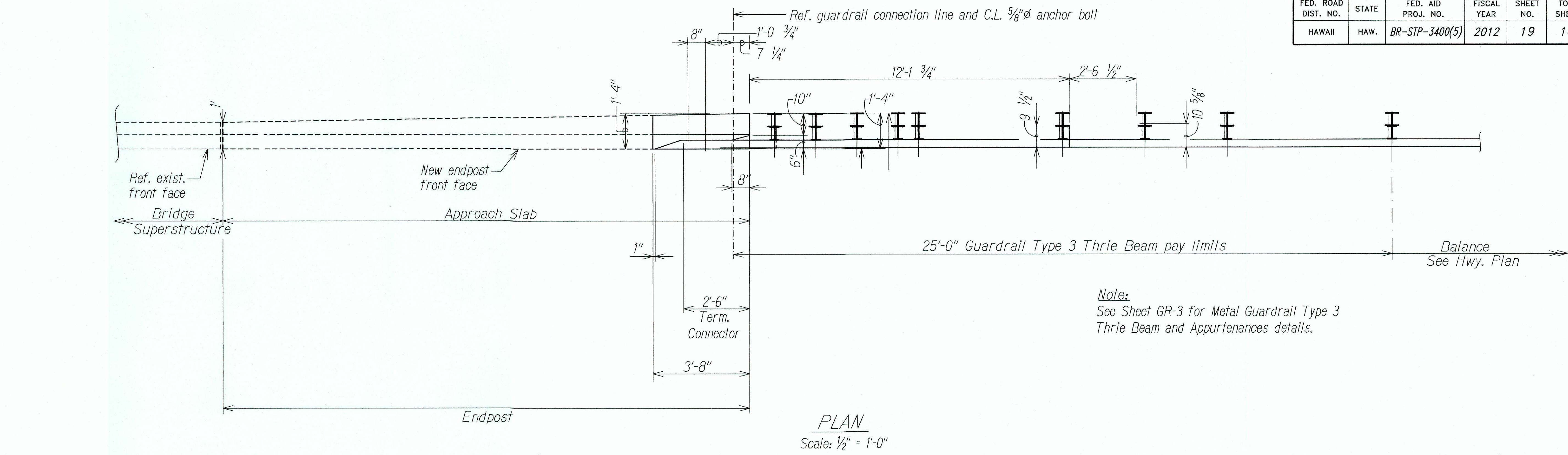


FED. ROAD DIST. NO.	STATE	FED. AID PROJ. NO.	FISCAL YEAR	SHEET NO.	TOTAL SHEETS
HAWAII	HAW.	BR-STP-3400(5)	2012	19	108



ENDPOST PLAN AND ELEVATION

STATE OF HAWAII
DEPARTMENT OF TRANSPORTATION
HIGHWAYS DIVISION

**ENDPOST DETAILS
PLAN AND ELEVATION**

WAIHEHU BEACH ROAD
REHABILITATION OF IAO STREAM BRIDGE
Federal Aid Project No. BR-STP-3400(5)

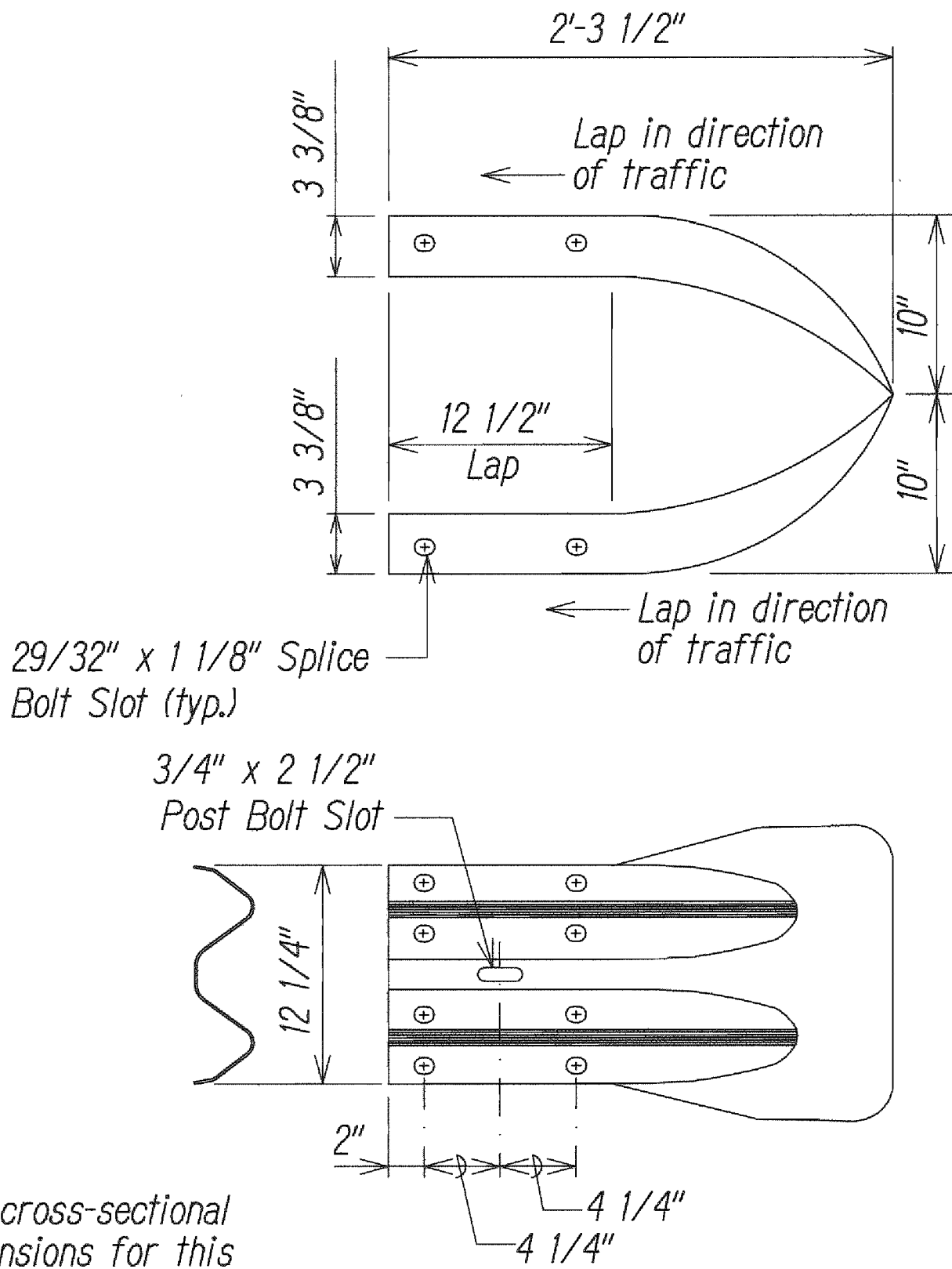
Date: October 2012

SHEET No. GR1 OF 10 SHEETS

SURVEY PLOTTED BY	DATE
DRAWN BY	
DESIGNED BY	
QUANTITIES BY	
CHECKED BY	
ORIGINAL PLAN	
NOTE BOOK	
No.	

"AS-BUILT"

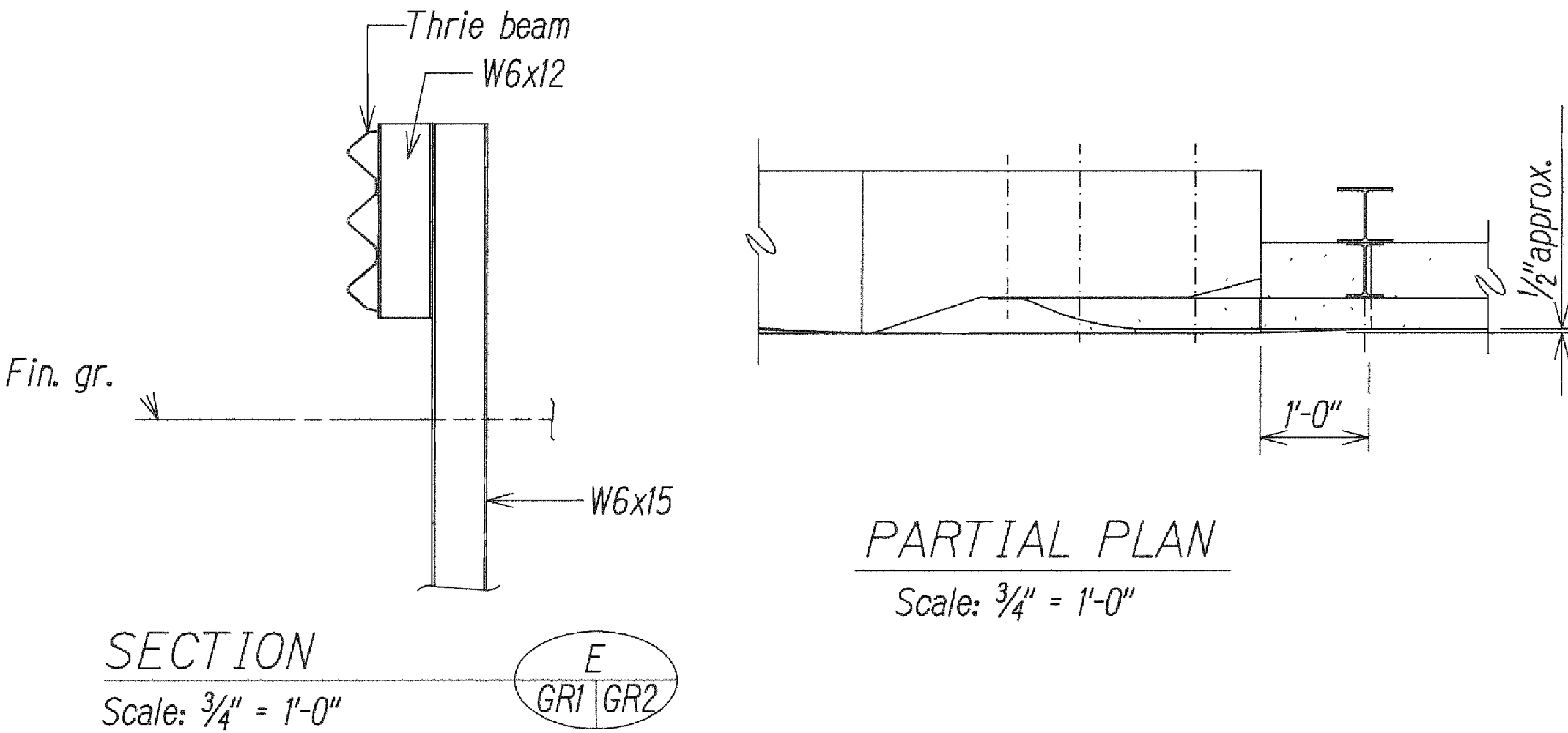
FED. ROAD DIST. NO.	STATE	FED. AID PROJ. NO.	FISCAL YEAR	SHEET NO.	TOTAL SHEETS
HAWAII	HAW.	BR-STP-3400(5)	2012	20	108



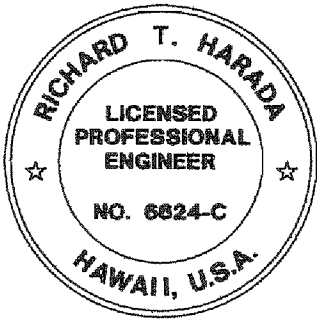
The cross-sectional dimensions for this part are to fit over part RWM02a on the approach end and under part RWM02a on the trailing end.

DESIGNATOR	BASE METAL THICKNESS
RWE01a	12 Gauge

DOUBLE W-BEAM END SECTION



TYPICAL SECTIONS - ENDPPOST DETAILS



THIS WORK WAS PREPARED BY ME OR UNDER MY SUPERVISION.

APR 30, 2014
WILSON OKAMOTO CORPORATION LIC. EXP. DATE

STATE OF HAWAII
DEPARTMENT OF TRANSPORTATION
HIGHWAYS DIVISION

ENDPOST DETAILS
AND TYPICAL SECTIONS
WAIEHU BEACH ROAD
REHABILITATION OF IAO STREAM BRIDGE
Federal Aid Project No. BR-STP-3400(5)
Date: October 2012

SHEET No. GR2 OF 10 SHEETS

ORIGINAL PLAN	DATE
DESIGNED BY	
CHECKED BY	
NOTED BY	
QUANTITIES BY	
DESIGNED BY	
CHECKED BY	
NOTED BY	
QUANTITIES BY	

Path: L:\W0A\7213-01 Iao\DWG\ Filename: C-20 GR2 Plot date: Oct 12, 2012-02:56:42pm CAD User: gkokita Xref Filename: Bordersht 22x36 AUTODATE