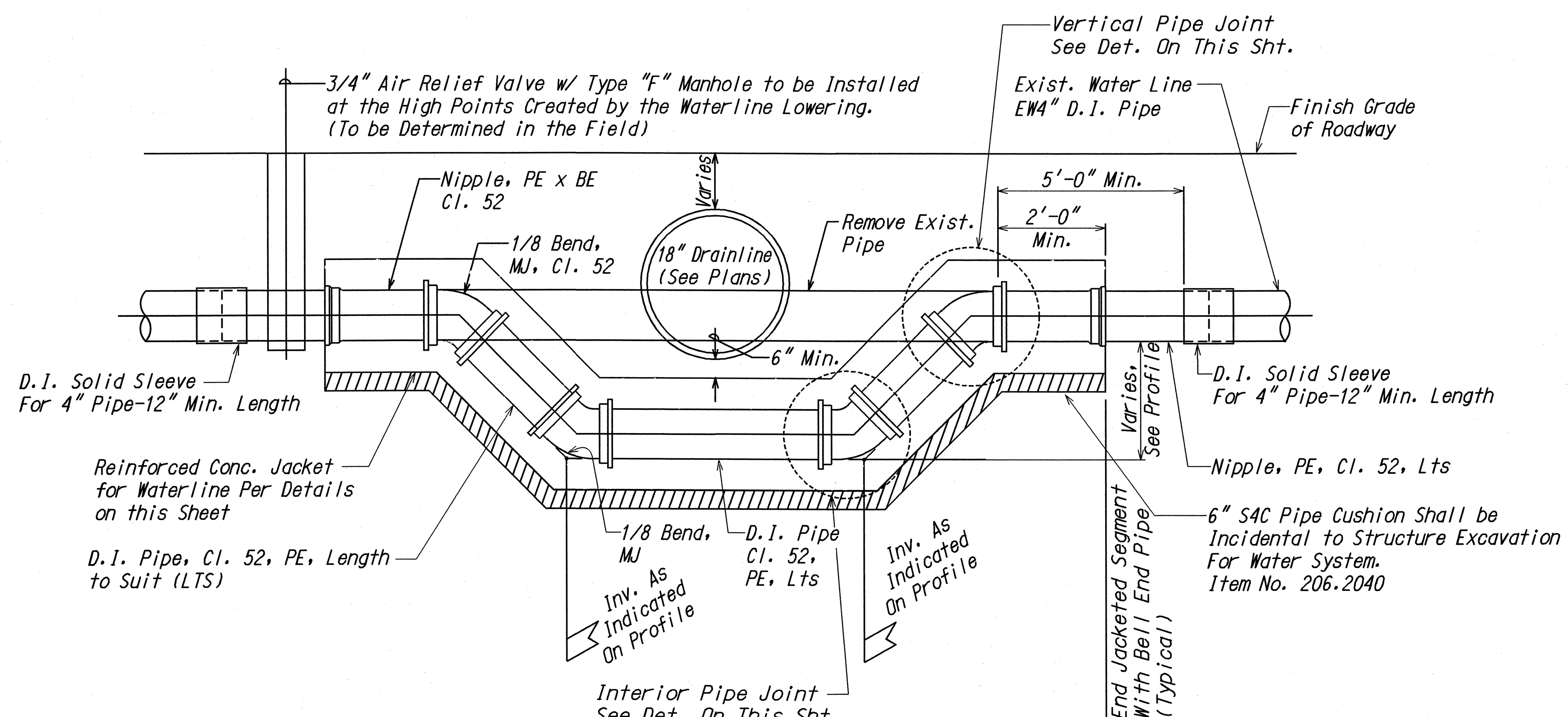
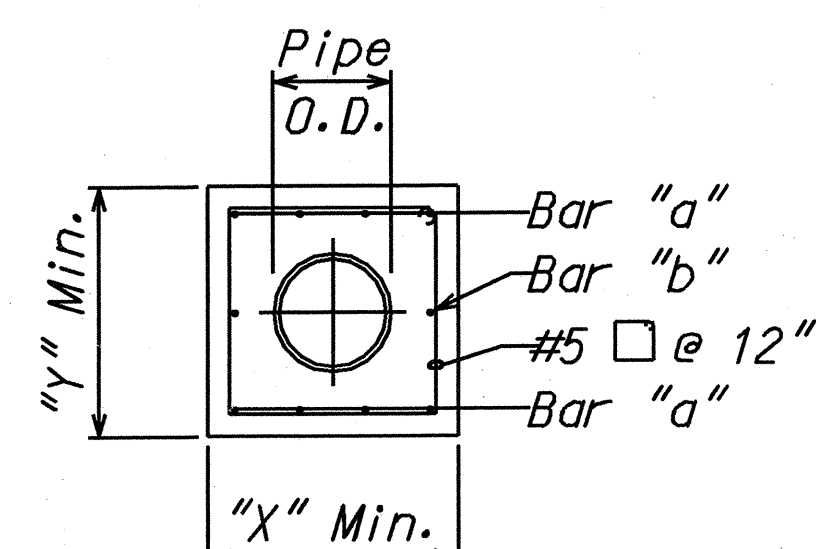
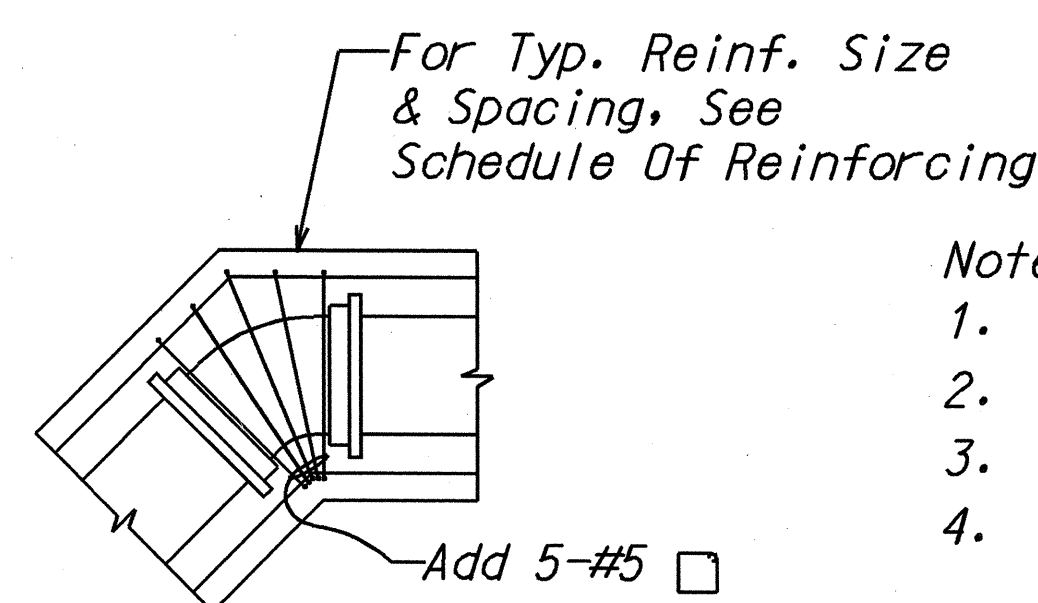
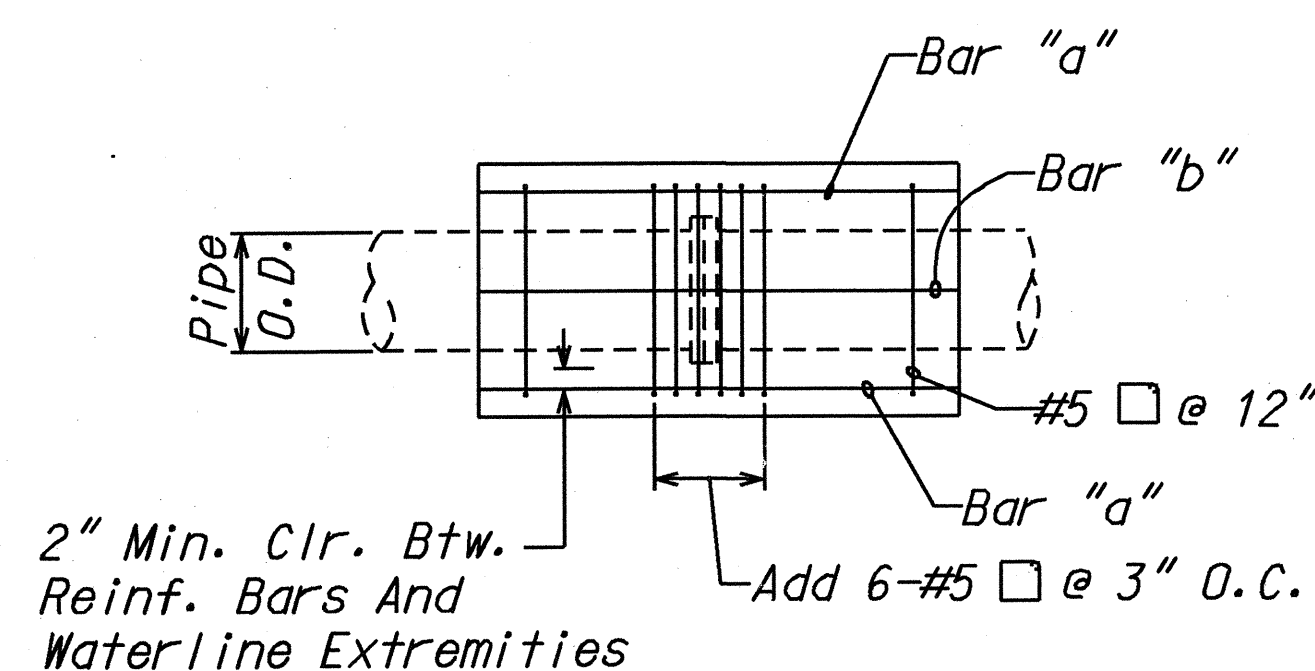


FED. ROAD DIST. NO.	STATE	PROJ. NO.	FISCAL YEAR	SHEET NO.	TOTAL SHEETS
HAWAII	HAW.	3400AB-01-03	2004	15	15



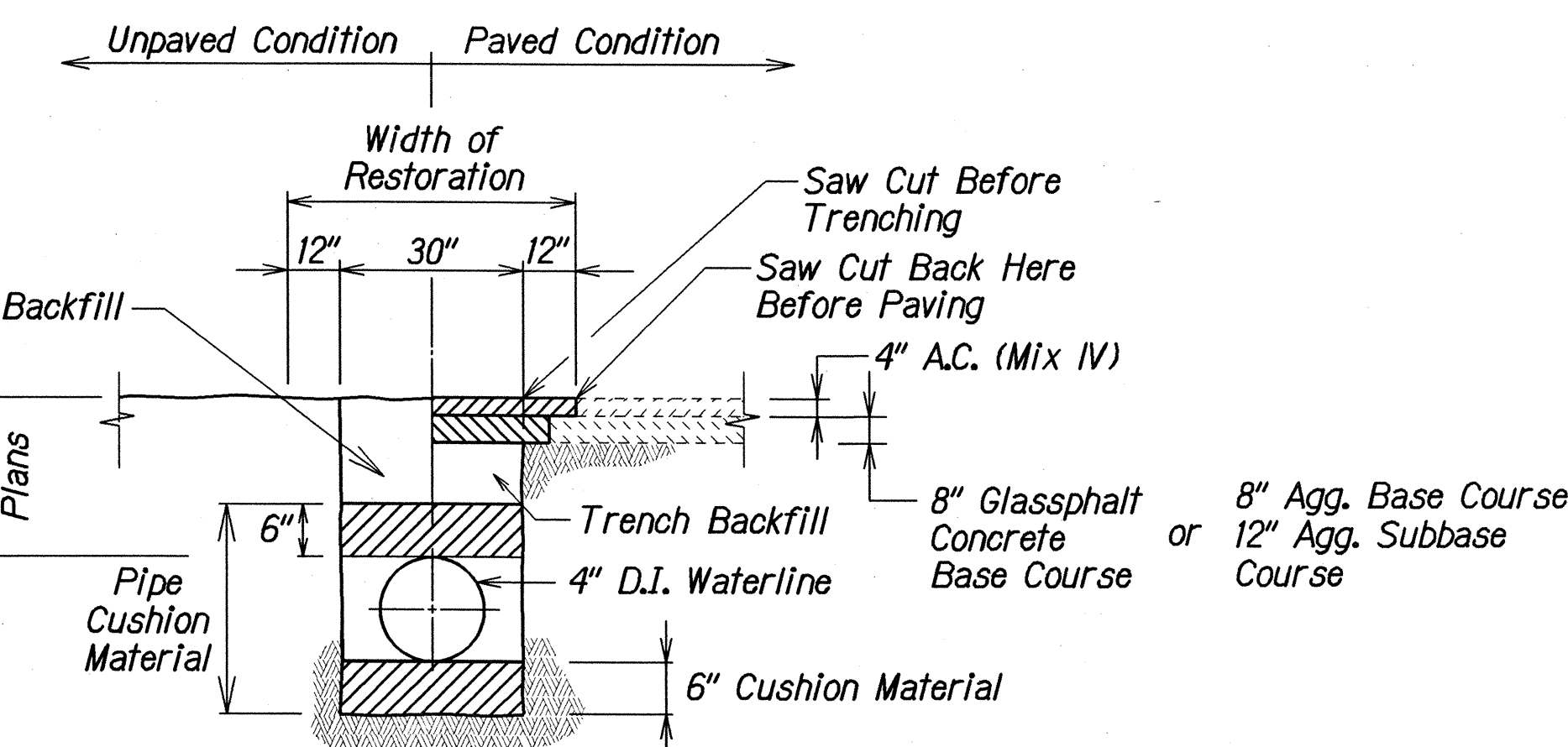
Detail - Waterline Realignment
Not To Scale



Schedule of Reinforcing				
Pipe Size	X	Y	Bar "a"	Bar "b"
2 1/2"	24"	24"	2-#7 cont.	2-#7 cont.
4"				

Concrete Jacket Detail
Not To Scale

- Notes:
- Concrete: $f_c = 3,500$ psi
 - Steel Reinf.: ASTM A615 Grade 60
 - Hydraulic Design Pressure: 250 psi
 - For Pre-cast Applications, Contractor shall Submit Structurally-Stamped Shop Drawings Detailing Lifting Configuration and Integral Lifting Hardware at Least Ten (10) Working Days Prior to Fabrication of Structure.
 - For Cast-in-place Applications, where Hydraulic Pressure is Expected Prior to at Least Fourteen (14) Days After Placement of Concrete. Contractor shall Provide Temporary Thrust Restraints, as Required, and shall Submit Structurally-Stamped Shop Drawings Detailing Same at Least Ten (10) Working Days Prior to Fabrication of Structure.
 - All Interior Joints and Fittings shall be "MJ".



TYPICAL PAVEMENT RESTORATION
SECTION WITHIN STATE RIGHT-OF-WAY
Not To Scale

APPROVED:

[Signature] 11/2/03
DIRECTOR, DEPARTMENT OF WATER SUPPLY
COUNTY OF MAUI
(Approval is limited to the Water System Improvements which will be dedicated to the Department of Water Supply)

STATE OF HAWAII
DEPARTMENT OF TRANSPORTATION
HIGHWAYS DIVISION

MISCELLANEOUS DETAILS
WAIHEHU BEACH ROAD
MISC. DRAINAGE IMPROVEMENTS
Vicinity of Lower Main Street to Eha Street
Project No. 3400AB-01-03
Scale: As Shown Date: November, 2003
SHEET No. 1 OF 1 SHEETS

SURVEY PLOTTED BY	DATE
DRAWN BY	07/23/03
DESIGNED BY	
CHECKED BY	
ORIGINAL PLAN	
NOTE BOOK	
QUANTITIES BY	
CHECKED BY	