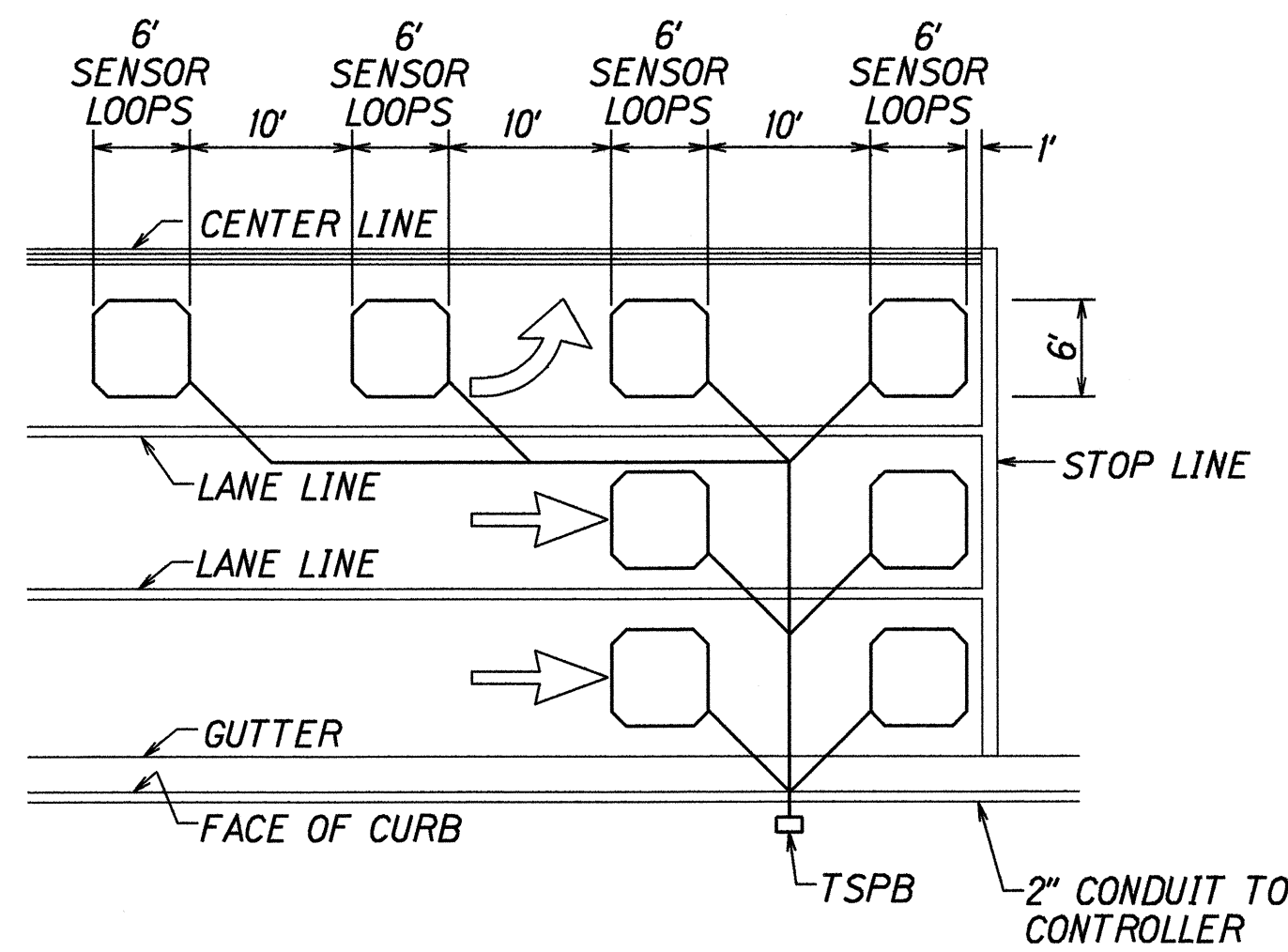
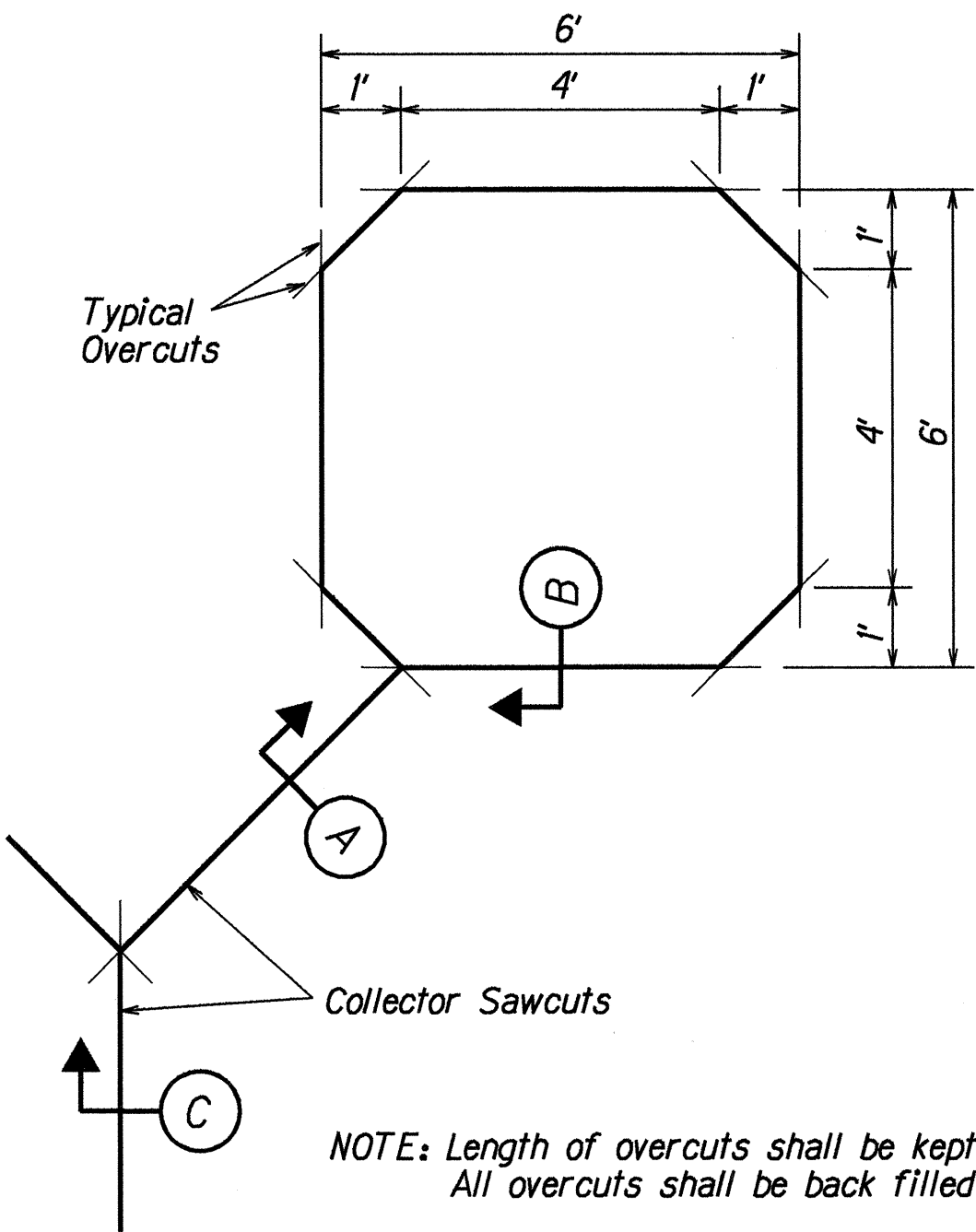


FED. ROAD DIST. NO.	STATE	PROJ. NO.	FISCAL YEAR	SHEET NO.	TOTAL SHEETS
HAWAII	HAW.	3400B-01-98	1998	16	16

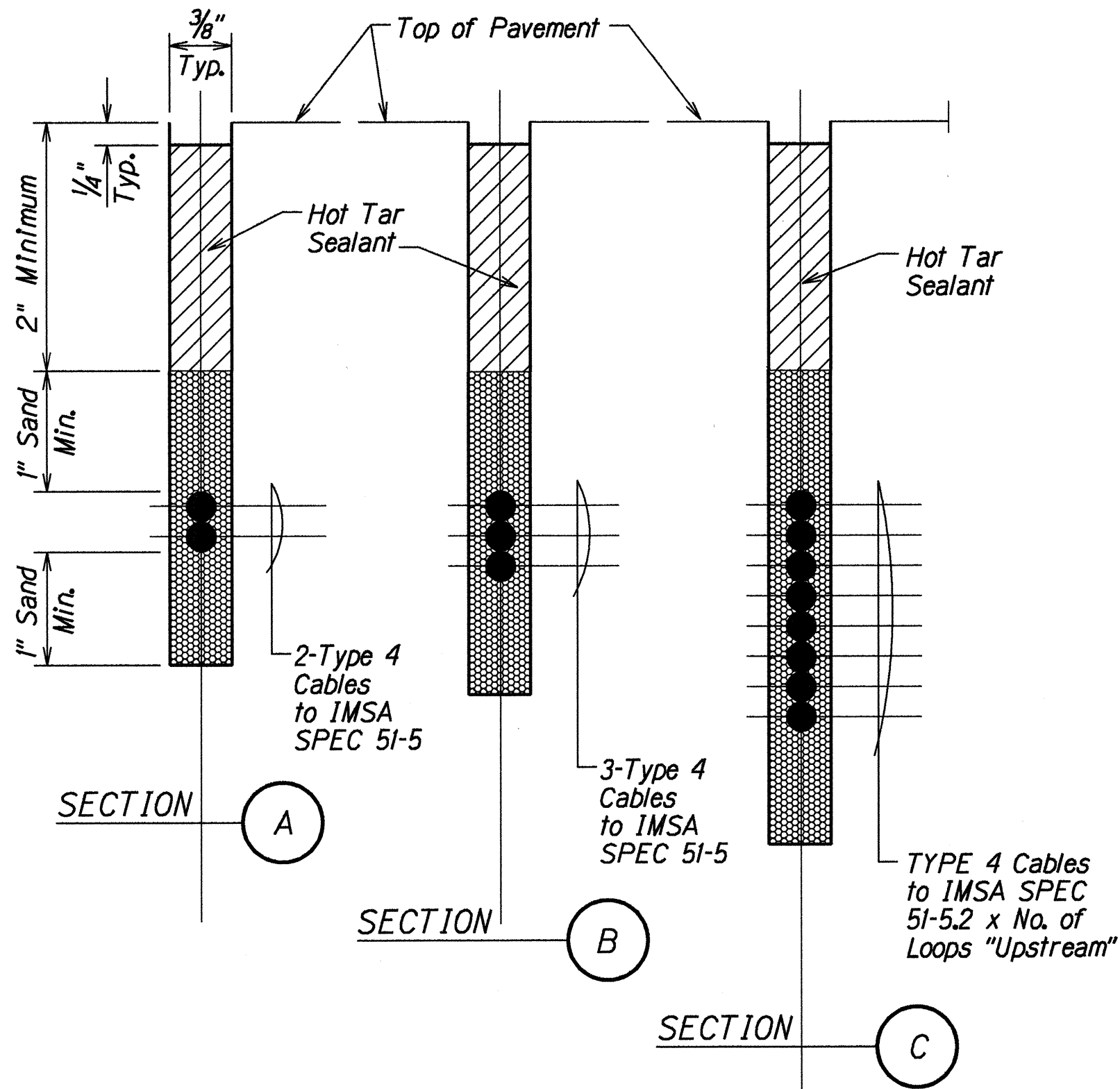


- NOTES:
- Center sensor loops in lanes.
 - Collector cables shall be twisted 2 turns per foot.
 - Number of loops and locations vary. See project plans.
 - Number and locations of collector sawcuts may be varied in the field to suit.

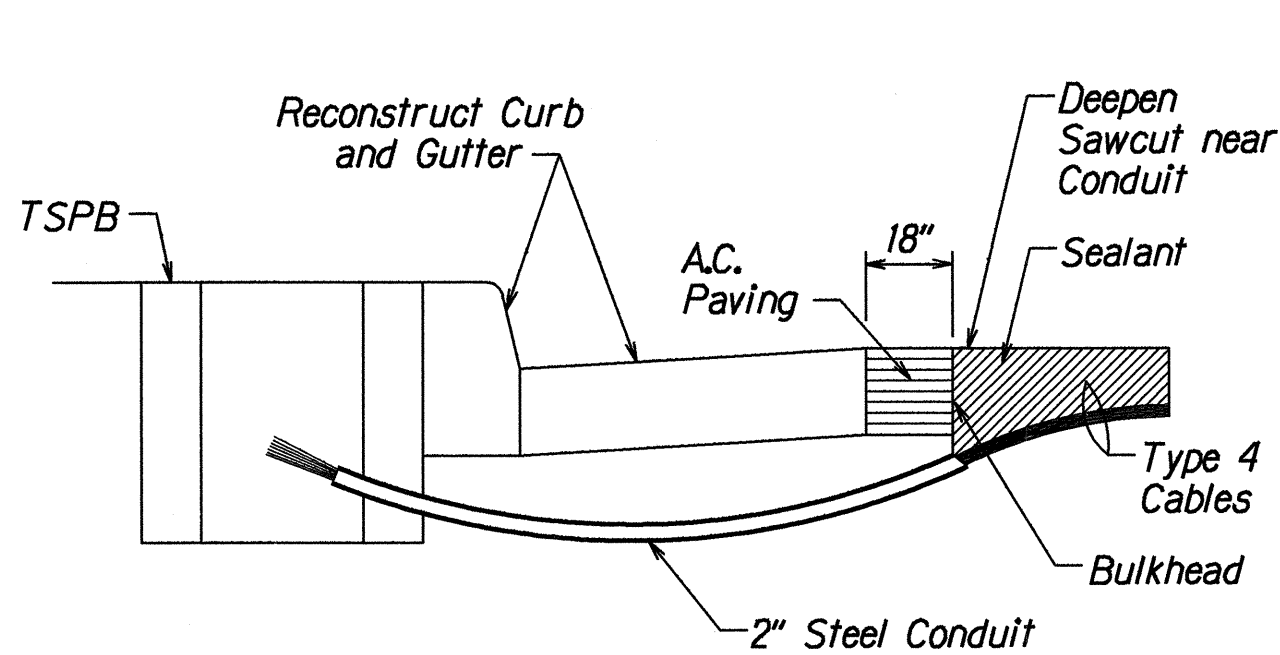
TYPICAL SENSOR LOOP LAYOUT



TYPICAL SENSOR LOOP SAWCUT DETAIL

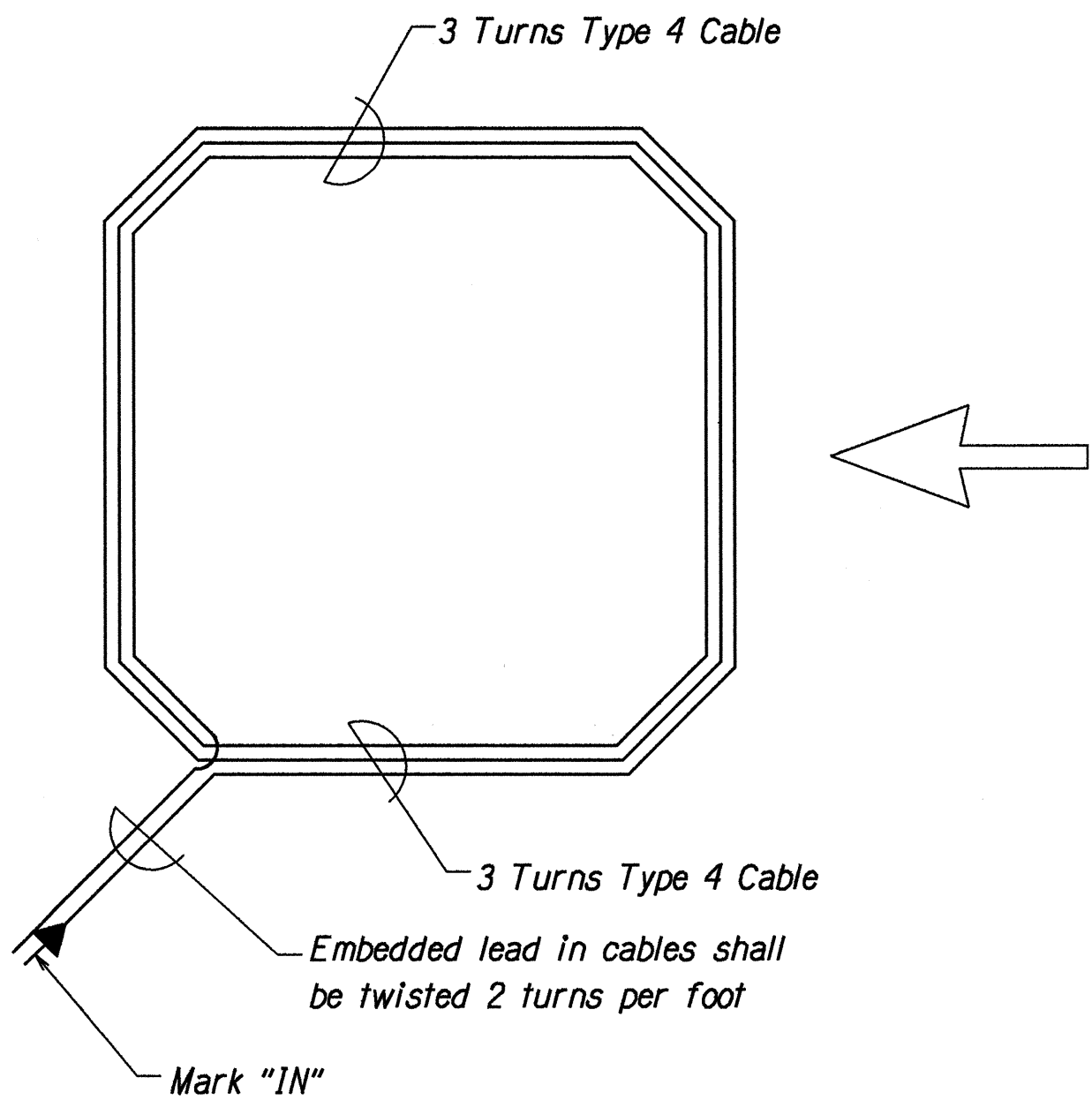


TYPICAL SECTION THROUGH SENSOR LOOP



- NOTES ON CONSTRUCTION AT END OF SAWCUT
- Seal roadway end of conduit after installation of conductors.
 - Install bulkhead across conduit trench.
 - Place hot tar in sawcut.
 - Backfill over conduit with new A.C.
 - Reconstruct curb and gutter as required.

DETAIL OF SENSOR LOOP INSTALLATION
AT EDGE OF ROADWAY



TYPICAL SENSOR LOOP WIRING DIAGRAM

DESIGNED BY	DATE
TRACED BY	10/18/97
NOTED BY	
CHECKED BY	
ORIGINAL PLAN	
NOTE BOOK	
QUANTITIES BY	
CHECKED BY	

R4-1-97

STATE OF HAWAII
DEPARTMENT OF TRANSPORTATION
HIGHWAYS DIVISION

LOOP DETECTOR DETAILS

WAIIEHU BEACH ROAD
Installation of Traffic Signals at Eha Street
Project No. 3400B-01-98

Not to Scale Date: Oct., 1997
SHEET No. 1 OF 1 SHEETS