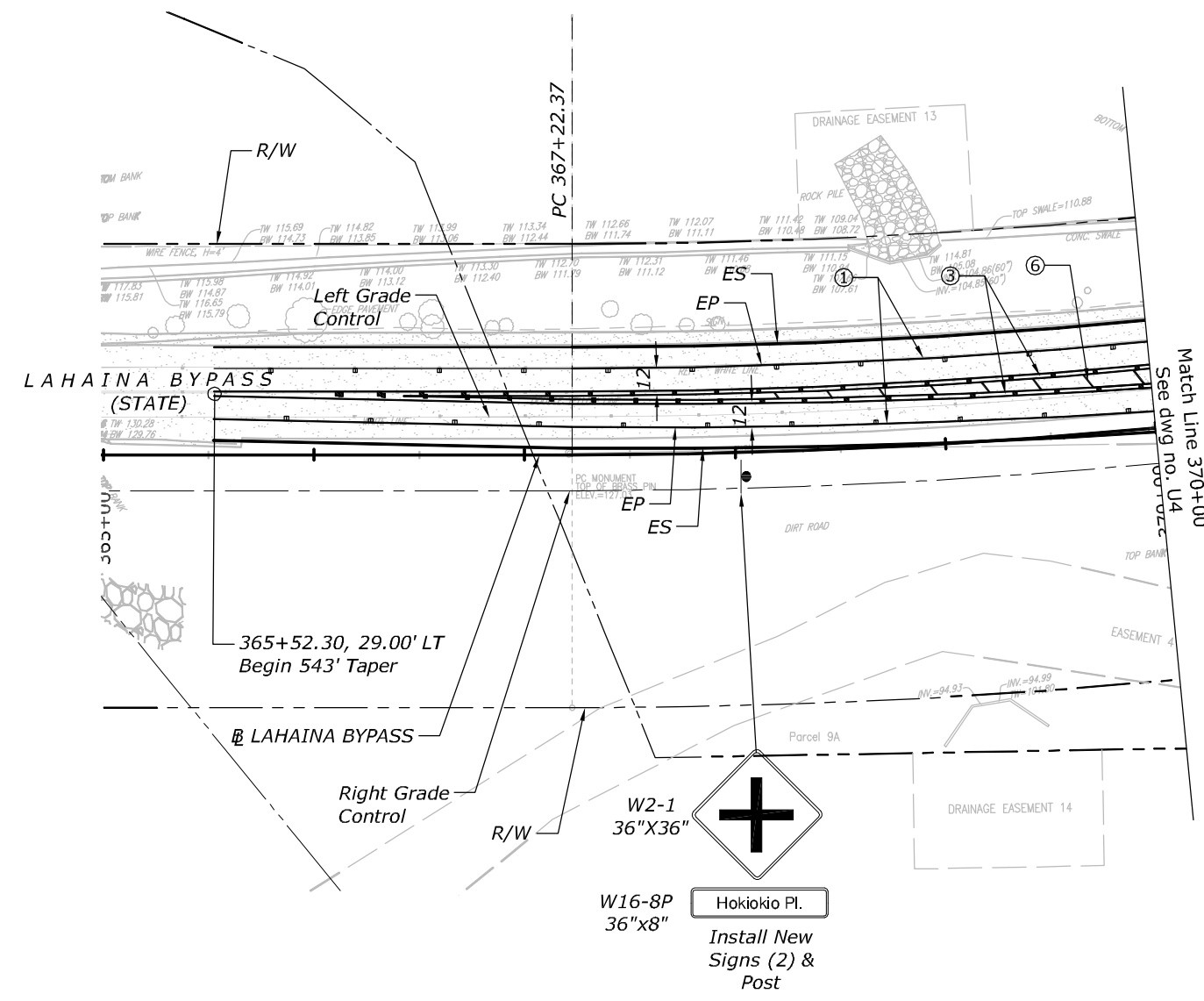
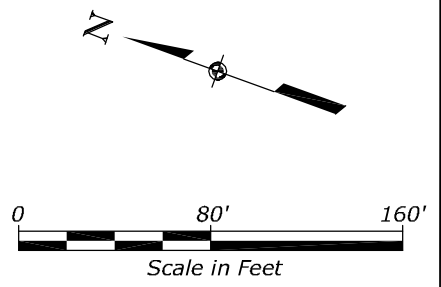
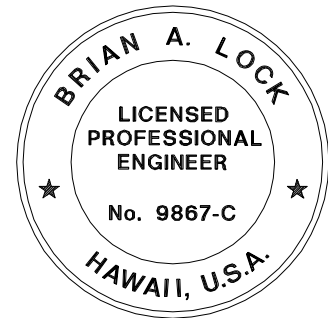


STATE	PROJECT	SHEET NO.
HI	HI STP SR 30(1)	U3



**LEGEND**

- ① 4" White Edge Stripe w/ Type C RPM at 40' O.C.
- ③ 4" Double Yellow Stripe w/ Type H RPM at 20' O.C.
- ⑥ 12" Yellow Diagonal Stripe at 20' O.C.



THIS WORK WAS PREPARED BY ME OR UNDER MY SUPERVISION.

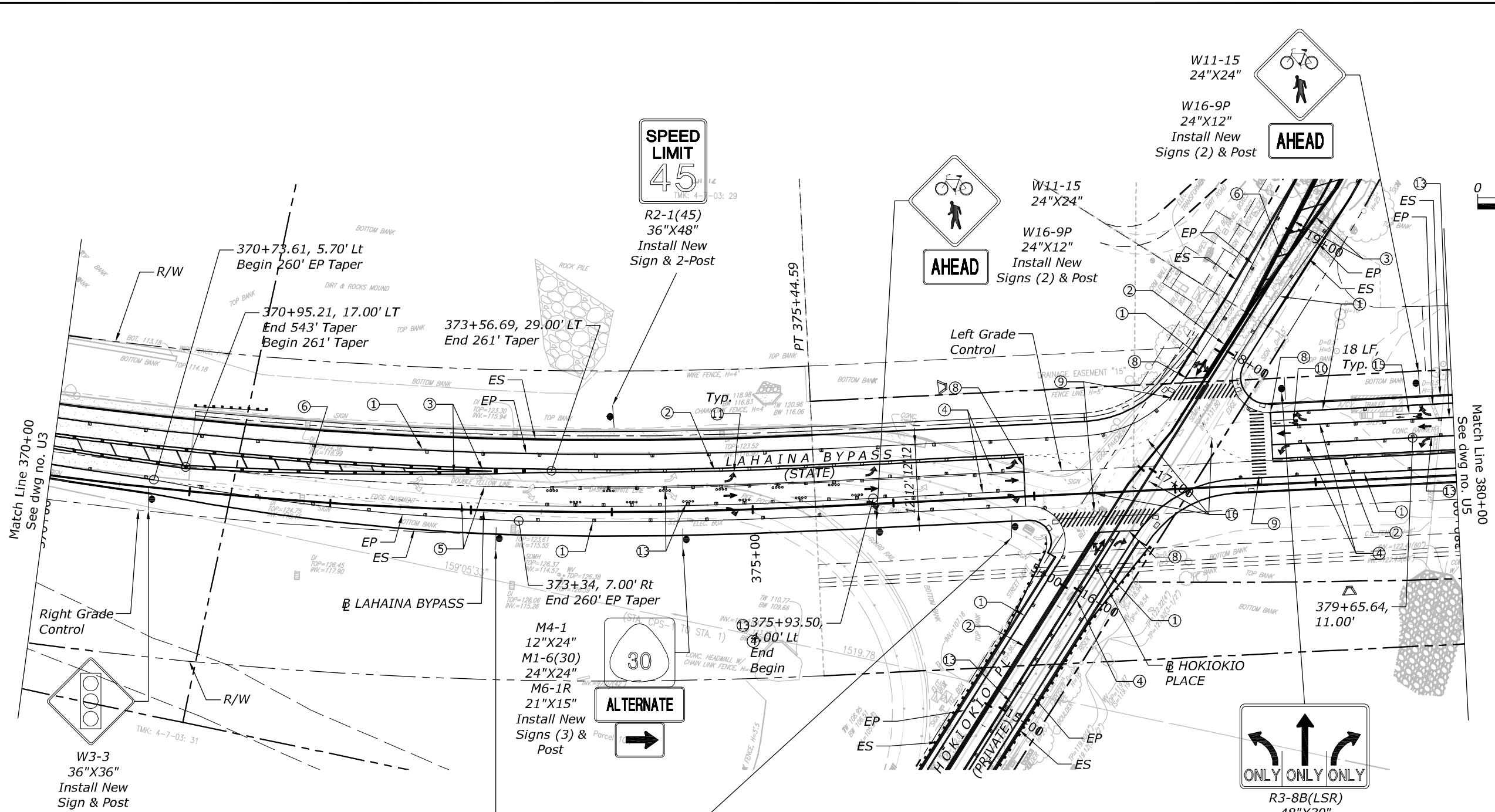
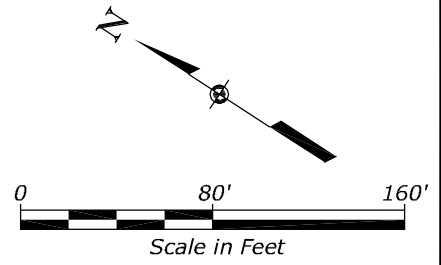
WILSON OKAMOTO CORPORATION APRIL 30, 2020  
L.I.C. EXP. DATE

U.S. DEPARTMENT OF TRANSPORTATION  
FEDERAL HIGHWAY ADMINISTRATION  
CENTRAL FEDERAL LANDS HIGHWAY DIVISION

U.S. CUSTOMARY

**SIGNING & PAVEMENT MARKING PLAN**

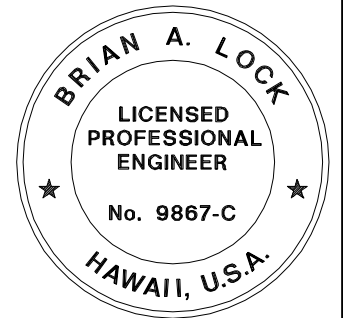
STATE	PROJECT	SHEET NO.
HI	HI STP SR 30(1)	U4



**NOTES:**  
 1. See Sheet U19 for Hokiokio Place.

**LEGEND**

- |   |  |
|---|--|
| ① 4" White Edge Stripe w/ Type C RPM at 40' O.C.    | ⑩ White Bike Symbol  |
| ② 4" Double Yellow Stripe w/ Type D RPM at 20' O.C. | ⑪ White Pavement Arrow   |
| ③ 4" Double Yellow Stripe w/ Type H RPM at 20' O.C. | ⑬ 4" White Stripe w/ Type C RPM at 20' O.C. & 4 Each, Type A RPM at 40' O.C. |
| ④ 8" White Stripe w/ Type C RPM at 20' O.C.         | ⑭ 4" White Stripe  |
| ⑤ 4" Dashed White Stripe 2' Long at 6' O.C.         | ⑮ 4" Dashed Yellow Stripe 2' Long at 6' O.C.                                 |
| ⑥ 12" Yellow Diagonal Stripe at 20' O.C.            |  |
| ⑧ 12" White Stop Line                               |  |
| ⑨ 12" White Crosswalk                               |  |



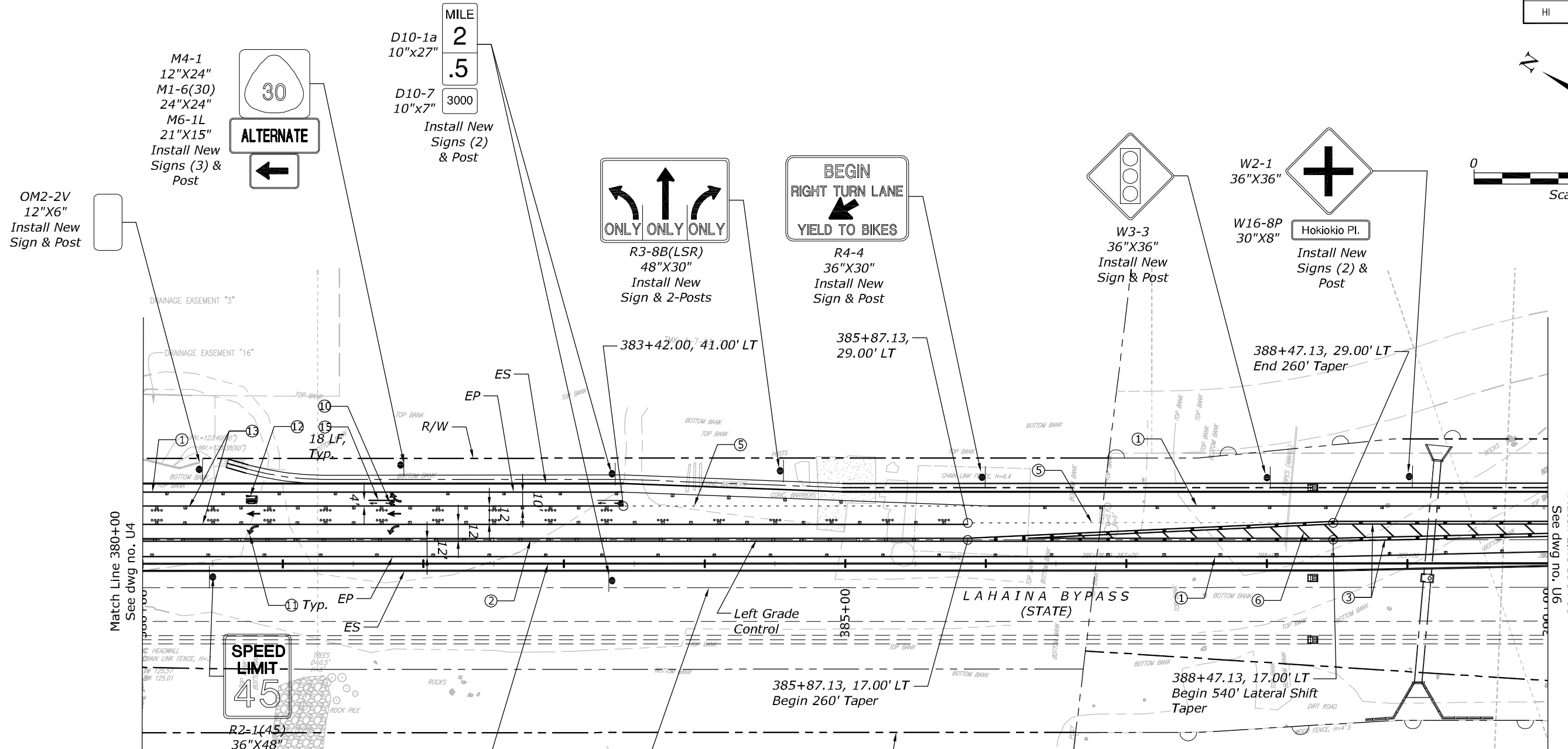
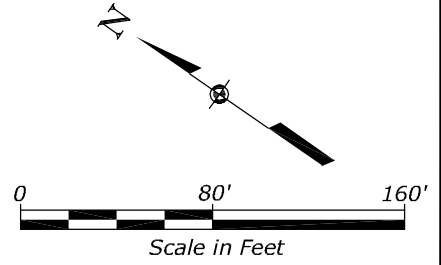
THIS WORK WAS PREPARED BY ME OR UNDER MY SUPERVISION.  
 WILSON OKAMOTO CORPORATION APRIL 30, 2020  
 LIC. EXP. DATE

U.S. DEPARTMENT OF TRANSPORTATION  
 FEDERAL HIGHWAY ADMINISTRATION  
 CENTRAL FEDERAL LANDS HIGHWAY DIVISION

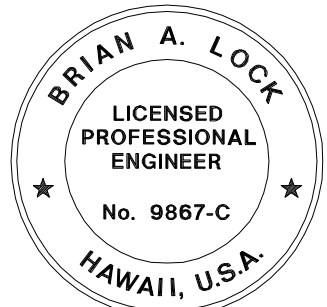
U.S. CUSTOMARY

**SIGNING & PAVEMENT MARKING PLAN**

STATE	PROJECT	SHEET NO.
HI	HI STP SR 30(1)	U5



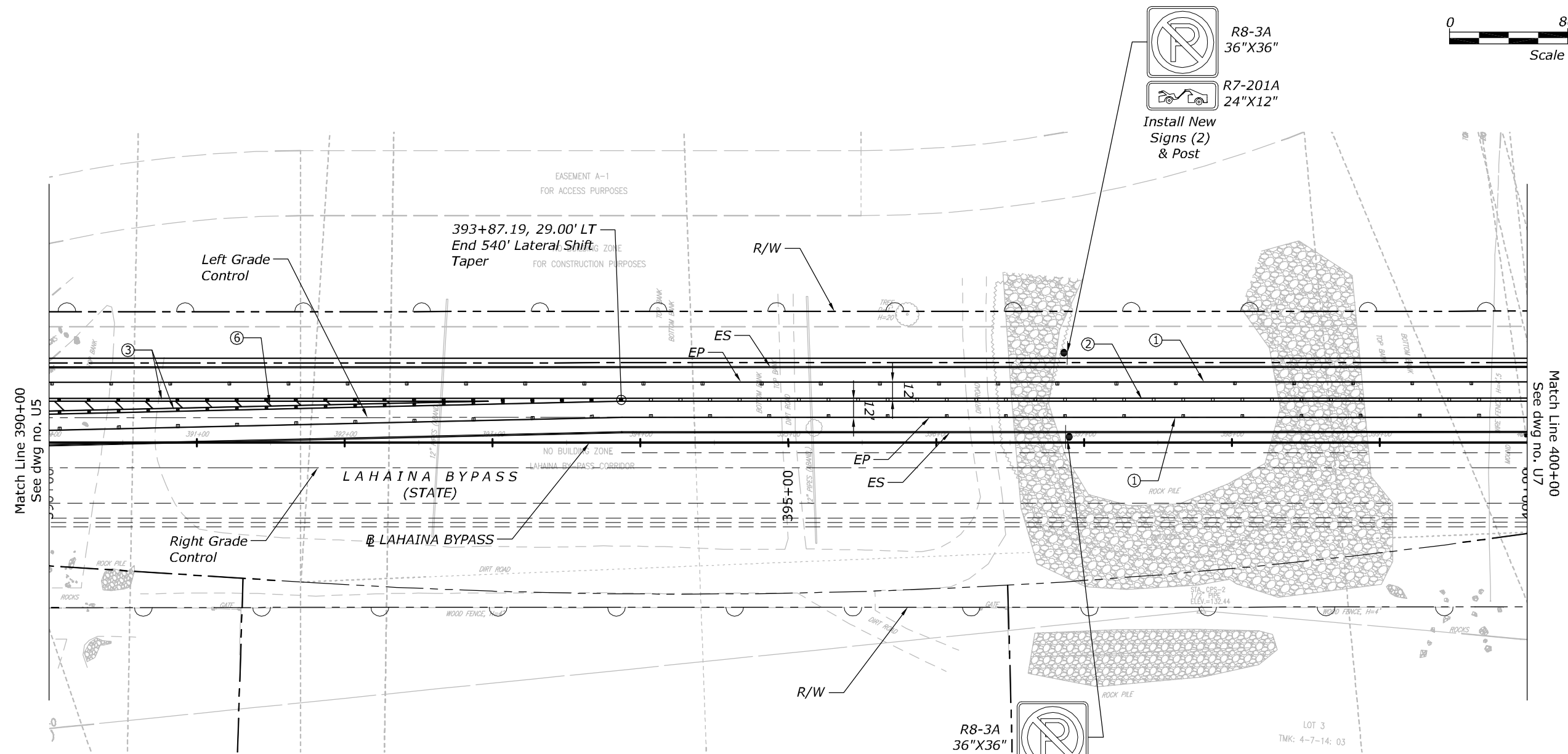
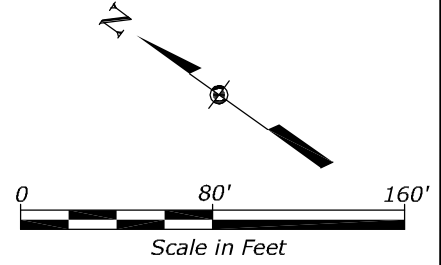
- LEGEND**
- ① 4" White Stripe w/ Type C RPM at 40' O.C.
  - ② 4" Double Yellow Stripe w/ Type D RPM at 20' O.C. TMK: 4-7-03: 28
  - ③ 4" Double Yellow Stripe w/ Type H RPM at 20' O.C.
  - ④ 8" White Stripe w/ Type C RPM at 20' O.C.
  - ⑤ 4" Dashed White Stripe 2' Long at 6' O.C.
  - ⑥ 12" Yellow Diagonal Stripe at 20' O.C.
  - ⓪ White Bike Symbol
  - ⓫ White Pavement Arrow
  - ⓬ White Pavement Word
  - ⓭ 4" White Stripe w/ Type C RPM at 20' O.C. & 4 Each, Type A RPM at 40' O.C.
  - ⓮ 4" White Stripe



THIS WORK WAS PREPARED BY ME OR UNDER MY SUPERVISION.  
 APRIL 30, 2020  
 LIC. EXP. DATE  
 WILSON OKAMOTO CORPORATION

U.S. DEPARTMENT OF TRANSPORTATION  
 FEDERAL HIGHWAY ADMINISTRATION  
 CENTRAL FEDERAL LANDS HIGHWAY DIVISION  
 U.S. CUSTOMARY  
**SIGNING & PAVEMENT MARKING PLAN**

STATE	PROJECT	SHEET NO.
HI	HI STP SR 30(1)	U6



Match Line 390+00  
See dwg no. U5

Match Line 400+00  
See dwg no. U7

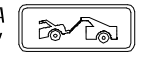
**LEGEND**

- ① 4" White Stripe w/ Type C RPM at 40' O.C.
- ② 4" Double Yellow Stripe w/ Type D RPM at 20' O.C
- ③ 4" Double Yellow Stripe w/ Type H RPM at 20' O.C.
- ⑥ 12" Yellow Diagonal Stripe at 20' O.C.

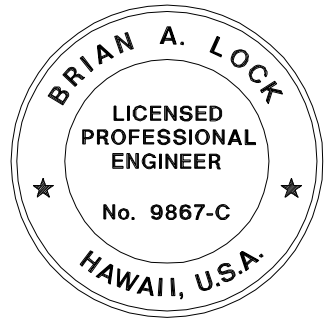
R8-3A  
36"X36"



R7-201A  
24"X12"



Install New  
Signs (2)  
& Post



THIS WORK WAS PREPARED BY ME  
OR UNDER MY SUPERVISION.

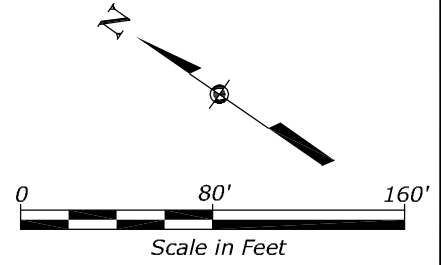
WILSON OKAMOTO CORPORATION APRIL 30, 2020  
LIC. EXP. DATE

U.S. DEPARTMENT OF TRANSPORTATION  
FEDERAL HIGHWAY ADMINISTRATION  
CENTRAL FEDERAL LANDS HIGHWAY DIVISION

U.S. CUSTOMARY

**SIGNING & PAVEMENT  
MARKING PLAN**

STATE	PROJECT	SHEET NO.
HI	HI STP SR 30(1)	U7



MILE  
 D10-1 10"x18" 2  
 D10-7 10"x7" 3000  
 Install New Signs (2) & Post

OM3-L 12"x36" Install New Sign & Post

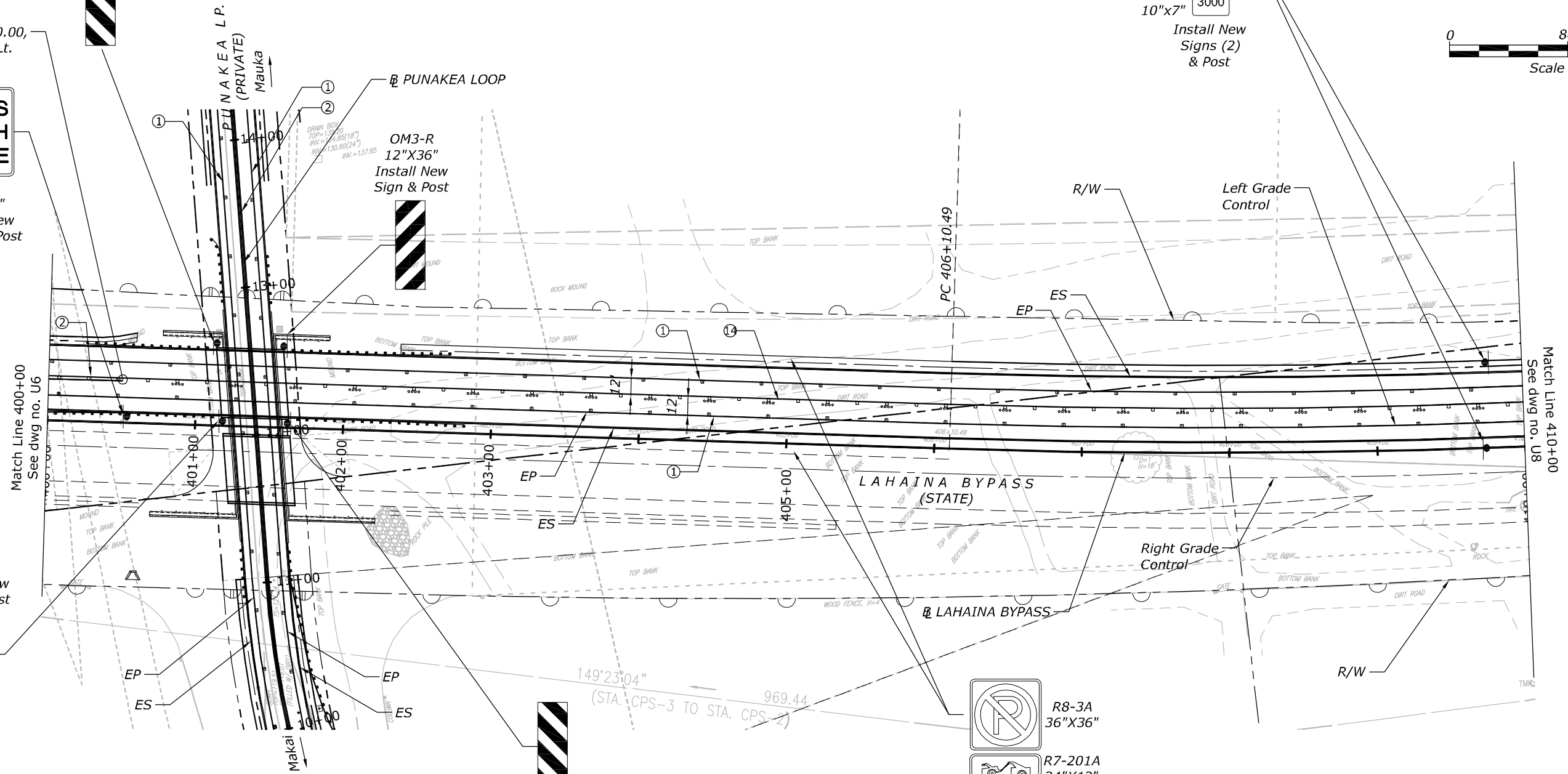
PASS WITH CARE  
 R4-2 36"x48" Install New Sign & 2-Post

OM3-R 12"x36" Install New Sign & Post

OM3-R 12"x36" Install New Sign & Post

OM3-L 12"x36" Install New Sign & Post

R8-3A 36"x36"  
 R7-201A 24"x12"  
 Install New Signs (2) & Post

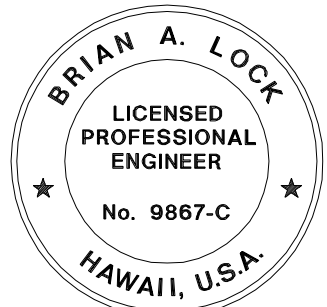


**LEGEND**

- ① 4" White Stripe w/ Type C RPM at 40' O.C.
- ② 4" Double Yellow Stripe w/ Type D RPM at 20' O.C.
- ⑬ 4" Yellow Stripe w/ Type D RPM at 20' O.C. & 4 Each, Type J RPM at 40' O.C.

**NOTES:**

- 1. See Sheet U20 for Punakea Loop.



U.S. DEPARTMENT OF TRANSPORTATION  
 FEDERAL HIGHWAY ADMINISTRATION  
 CENTRAL FEDERAL LANDS HIGHWAY DIVISION

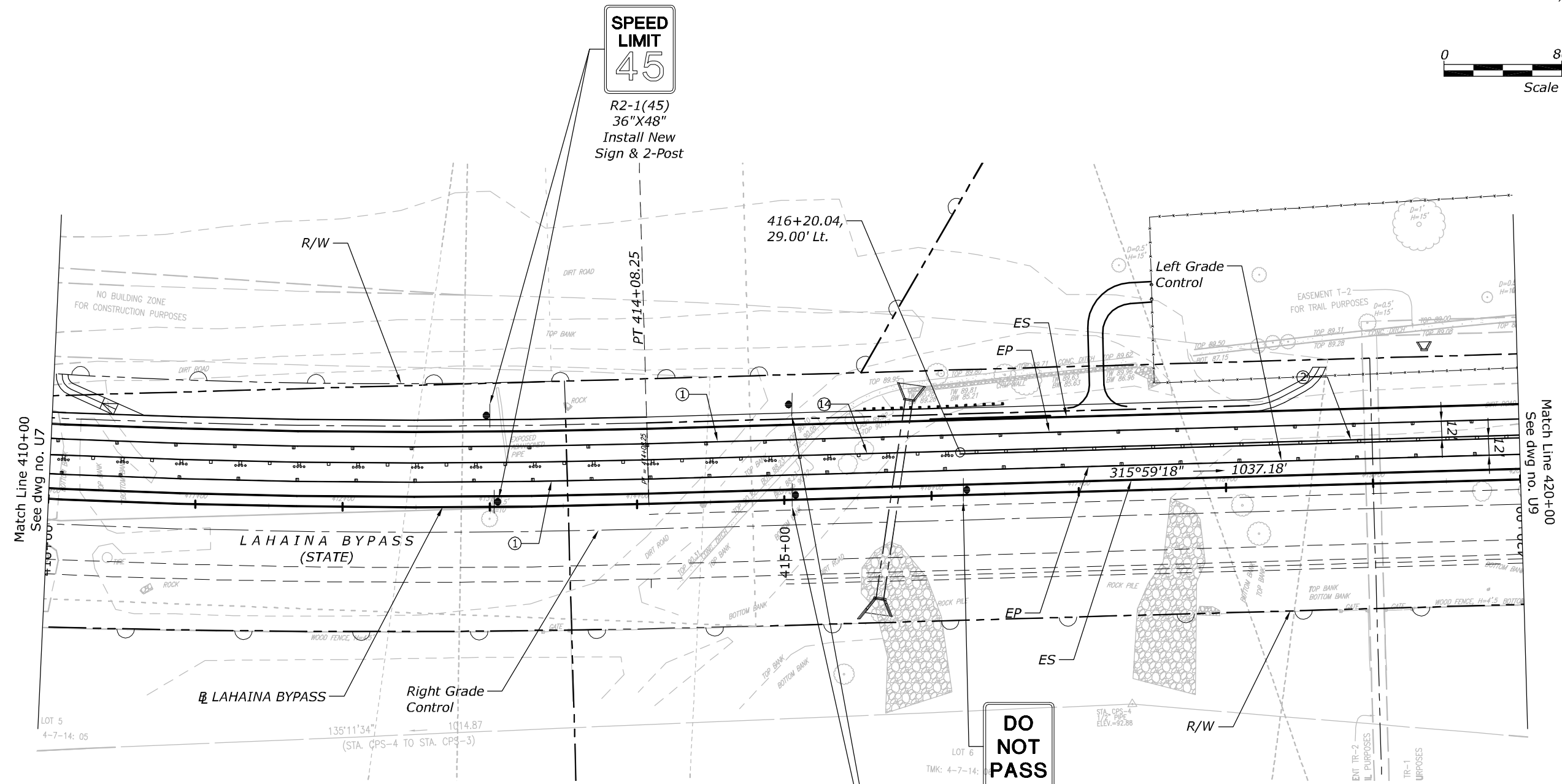
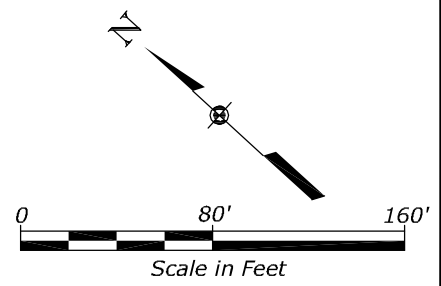
U.S. CUSTOMARY

**SIGNING & PAVEMENT MARKING PLAN**

THIS WORK WAS PREPARED BY ME OR UNDER MY SUPERVISION.

WILSON OKAMOTO CORPORATION APRIL 30, 2020 LIC. EXP. DATE

STATE	PROJECT	SHEET NO.
HI	HI STP SR 30(1)	U8



**LEGEND**

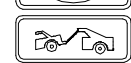
- ① 4" White Stripe w/ Type C RPM at 40' O.C.
- ② 4" Double Yellow Stripe w/ Type D RPM at 20' O.C.
- ⑬ 4" Yellow Stripe w/ Type D RPM at 20' O.C. & 4 Each, Type J RPM at 40' O.C.



R4-1  
36"X48"  
Install New  
Sign & 2-Post

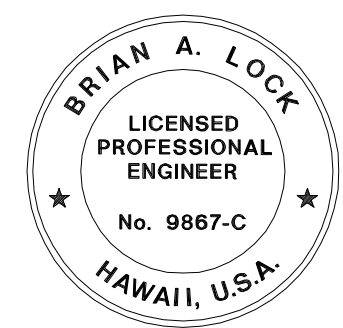


R8-3A  
36"X36"



R7-201A  
24"X12"

Install New  
Signs (2)  
& Post



THIS WORK WAS PREPARED BY ME  
OR UNDER MY SUPERVISION.

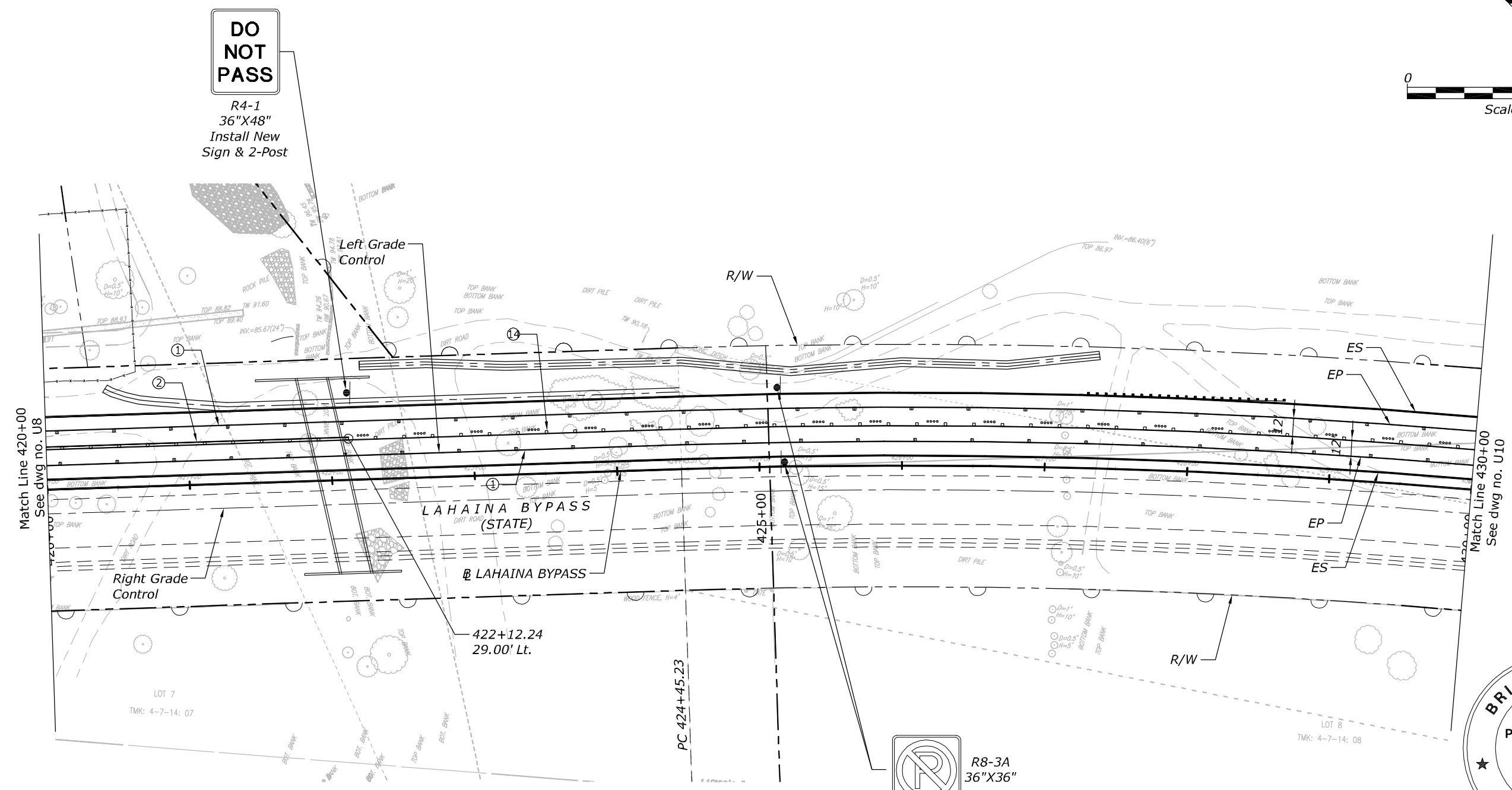
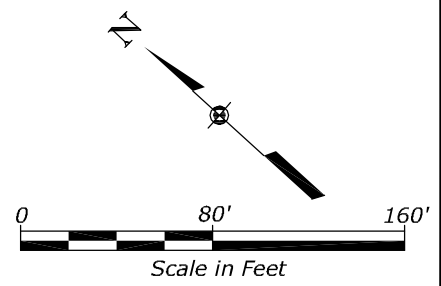
WILSON OKAMOTO CORPORATION APRIL 30, 2020  
LIC. EXP. DATE

U.S. DEPARTMENT OF TRANSPORTATION  
FEDERAL HIGHWAY ADMINISTRATION  
CENTRAL FEDERAL LANDS HIGHWAY DIVISION

U.S. CUSTOMARY

**SIGNING & PAVEMENT  
MARKING PLAN**

STATE	PROJECT	SHEET NO.
HI	HI STP SR 30(1)	U9



**DO NOT PASS**

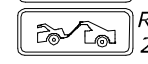
R4-1  
36"X48"  
Install New Sign & 2-Post

**LEGEND**

- ① 4" White Stripe w/ Type C RPM at 40' O.C.
- ② 4" Double Yellow Stripe w/ Type D RPM at 20' O.C.
- ⑬ 4" Yellow Stripe w/ Type D RPM at 20' O.C. & 4 Each, Type J RPM at 40' O.C.

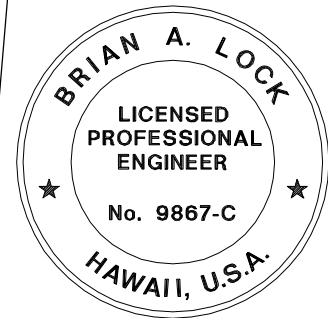


R8-3A  
36"X36"



R7-201A  
24"X12"

Install New Signs (2) & Post



THIS WORK WAS PREPARED BY ME OR UNDER MY SUPERVISION.

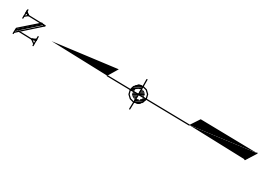
WILSON OKAMOTO CORPORATION APRIL 30, 2020  
LIC. EXP. DATE

U.S. DEPARTMENT OF TRANSPORTATION  
FEDERAL HIGHWAY ADMINISTRATION  
CENTRAL FEDERAL LANDS HIGHWAY DIVISION

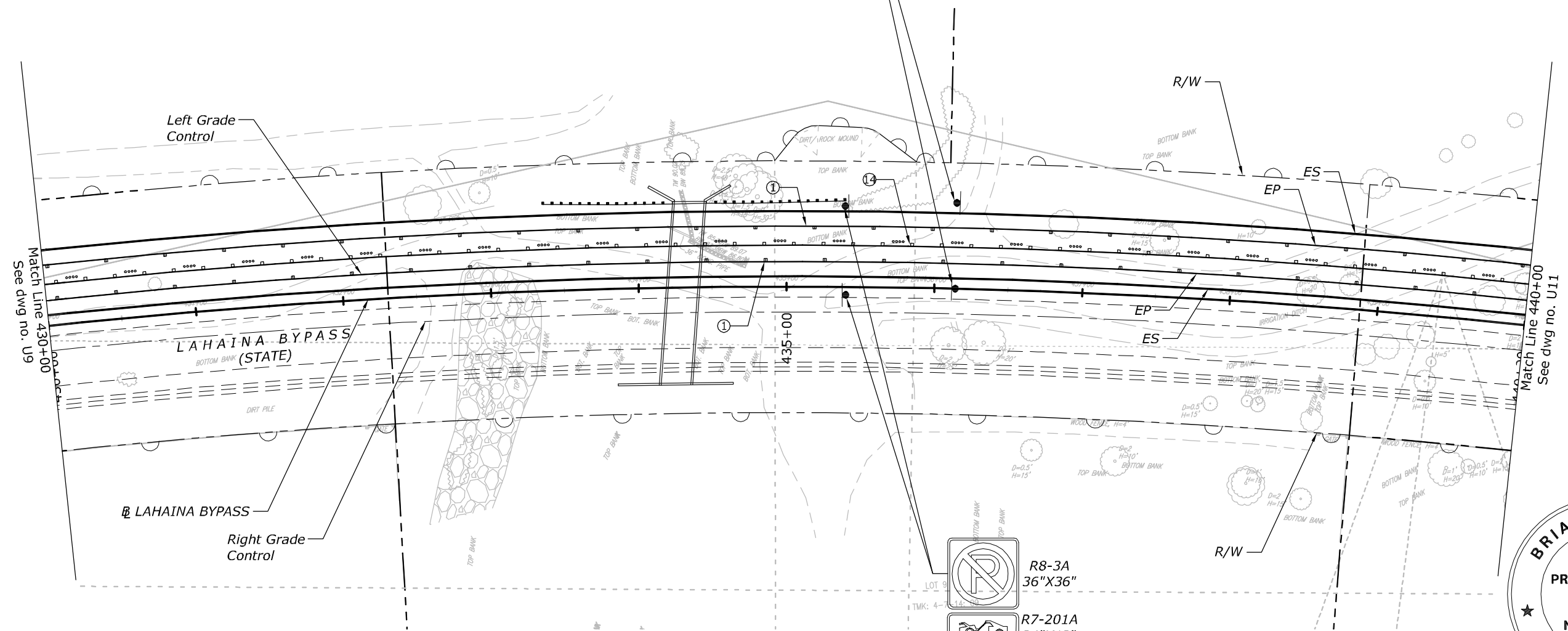
U.S. CUSTOMARY

**SIGNING & PAVEMENT MARKING PLAN**

STATE	PROJECT	SHEET NO.
HI	HI STP SR 30(1)	U10



MILE  
**1**  
 D10-1a  
 10"x27"  
**.5**  
 D10-7  
 10"x7"  
 3000  
 Install New  
 Signs (2)  
 & Post

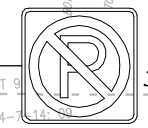


Match Line 430+00  
 See dwg no. U9

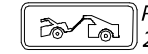
Match Line 440+00  
 See dwg no. U11

**LEGEND**

- ① 4" White Stripe w/ Type C RPM at 40' O.C.
- ⑭ 4" Yellow Stripe w/ Type D RPM at 20' O.C. & 4 Each, Type J RPM at 40' O.C.

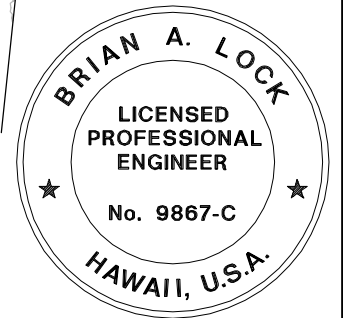


R8-3A  
 36"X36"



R7-201A  
 24"X12"

Install New  
 Signs (2)  
 & Post



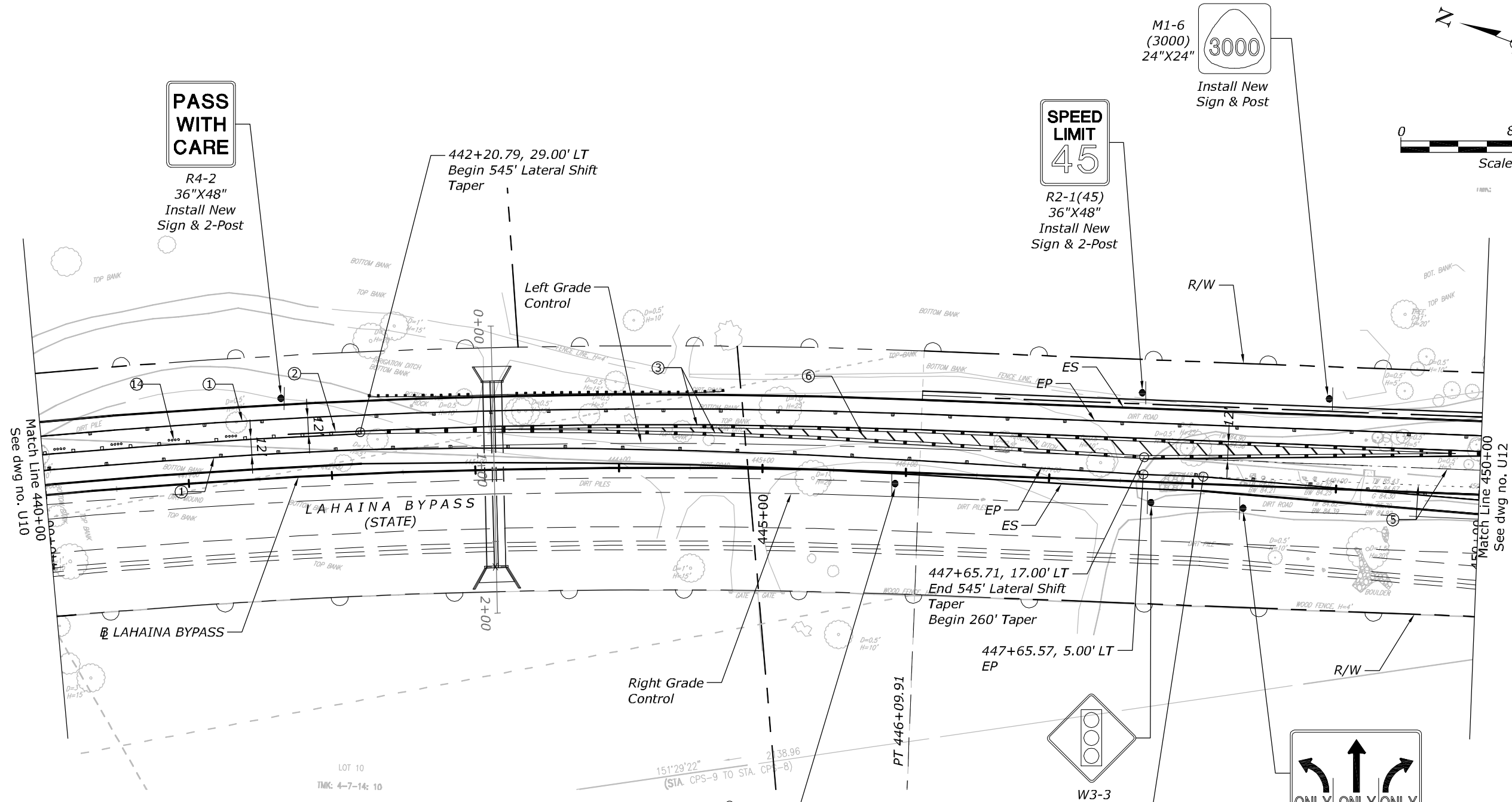
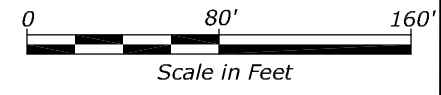
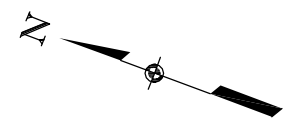
THIS WORK WAS PREPARED BY ME  
 OR UNDER MY SUPERVISION.

WILSON OKAMOTO CORPORATION APRIL 30, 2020  
 LIC. EXP. DATE

U.S. DEPARTMENT OF TRANSPORTATION  
 FEDERAL HIGHWAY ADMINISTRATION  
 CENTRAL FEDERAL LANDS HIGHWAY DIVISION

U.S. CUSTOMARY  
**SIGNING & PAVEMENT  
 MARKING PLAN**

STATE	PROJECT	SHEET NO.
HI	HI STP SR 30(1)	U11



**LEGEND**

- ① 4" White Stripe w/ Type C RPM at 40' O.C.
- ② 4" Double Yellow Stripe w/ Type D RPM at 20' O.C.
- ③ 4" Double Yellow Stripe w/ Type H RPM at 20' O.C. 8" White Stripe w/ Type C RPM at 20' O.C.
- ⑤ 4" Dashed White Stripe 2' Long at 6' O.C.
- ⑥ 12" Yellow Diagonal Stripe at 20' O.C.
- ⑬ 4" Yellow Stripe w/ Type D RPM at 20' O.C. & 4 Each, Type J RPM at 40' O.C.

W2-1  
36"X36"

W16-8P  
48"X8"

Kai Hele Ku St.  
Install New Signs (2) & Post

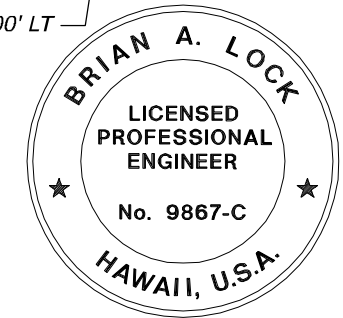
W3-3  
36"X36"

Install New Sign & Post

448+07.42, 5.00' LT  
Begin EP Taper

R3-8B(LSR)  
48"X30"

Install New Sign & 2-Posts



THIS WORK WAS PREPARED BY ME OR UNDER MY SUPERVISION.

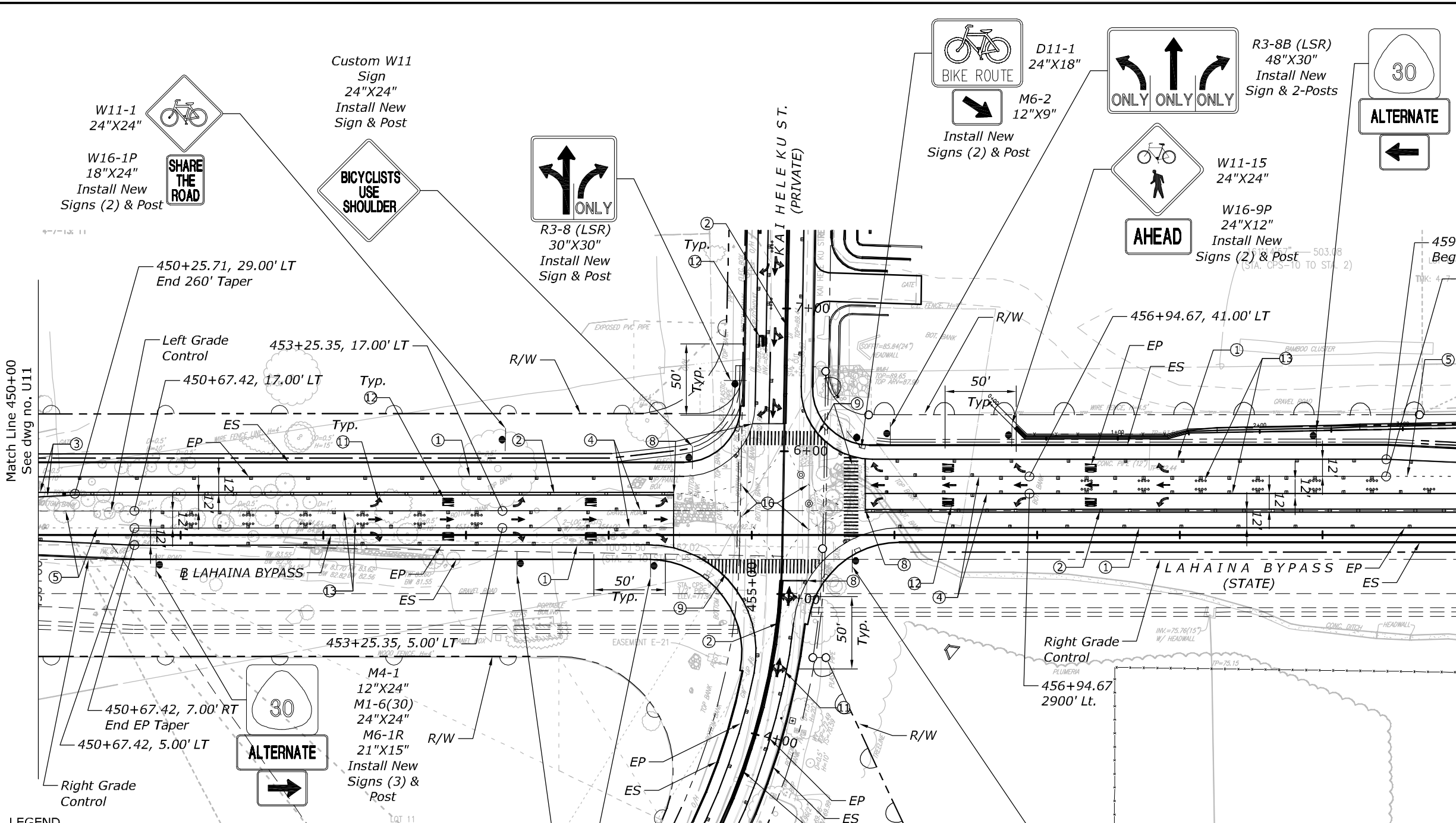
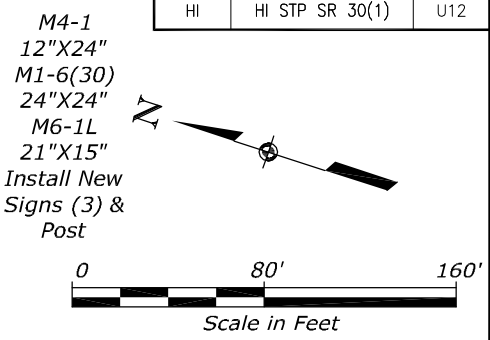
WILSON OKAMOTO CORPORATION APRIL 30, 2020 LIC. EXP. DATE

U.S. DEPARTMENT OF TRANSPORTATION  
FEDERAL HIGHWAY ADMINISTRATION  
CENTRAL FEDERAL LANDS HIGHWAY DIVISION

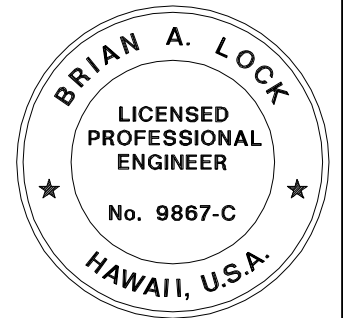
U.S. CUSTOMARY

**SIGNING & PAVEMENT MARKING PLAN**

STATE	PROJECT	SHEET NO.
HI	HI STP SR 30(1)	U12



- LEGEND**
- ① 4" White Stripe w/ Type C RPM at 40' O.C.
  - ② 4" Double Yellow Stripe w/ Type D RPM at 20' O.C.
  - ③ 4" Double Yellow Stripe w/ Type H RPM at 20' O.C.
  - ④ 8" White Stripe w/ Type C RPM at 20' O.C.
  - ⑤ 4" Dashed White Stripe 2' Long at 6' O.C.
  - ⑧ 12" White Stop Line
  - ⑨ 12" White Crosswalk
  - ⑪ White Pavement Arrow
  - ⑫ White Pavement Word
  - ⑬ 4" White Stripe w/Type C RPM at 20' O.C. & 4 Each, Type A RPM at 40' O.C.
  - ⑭ 4" Dashed Yellow Stripe 2' Long at 6' O.C.
- W11-15  
24"x24"  
Install New Sign & Post
- W16-9P  
24"x12"  
Install New Signs (2) & Post
- R3-8B (LSR)  
48"x30"  
Install New Sign & 2-Posts
- W11-15  
24"x24"  
Install New Sign & Post
- W16-9P  
24"x12"  
Install New Signs (2) & Post
- M4-1  
12"x24"  
M1-6(30)  
24"x24"  
M6-1R  
21"x15"  
Install New Signs (3) & Post
- M4-1  
12"x24"  
M1-6(30)  
24"x24"  
M6-1L  
21"x15"  
Install New Signs (3) & Post



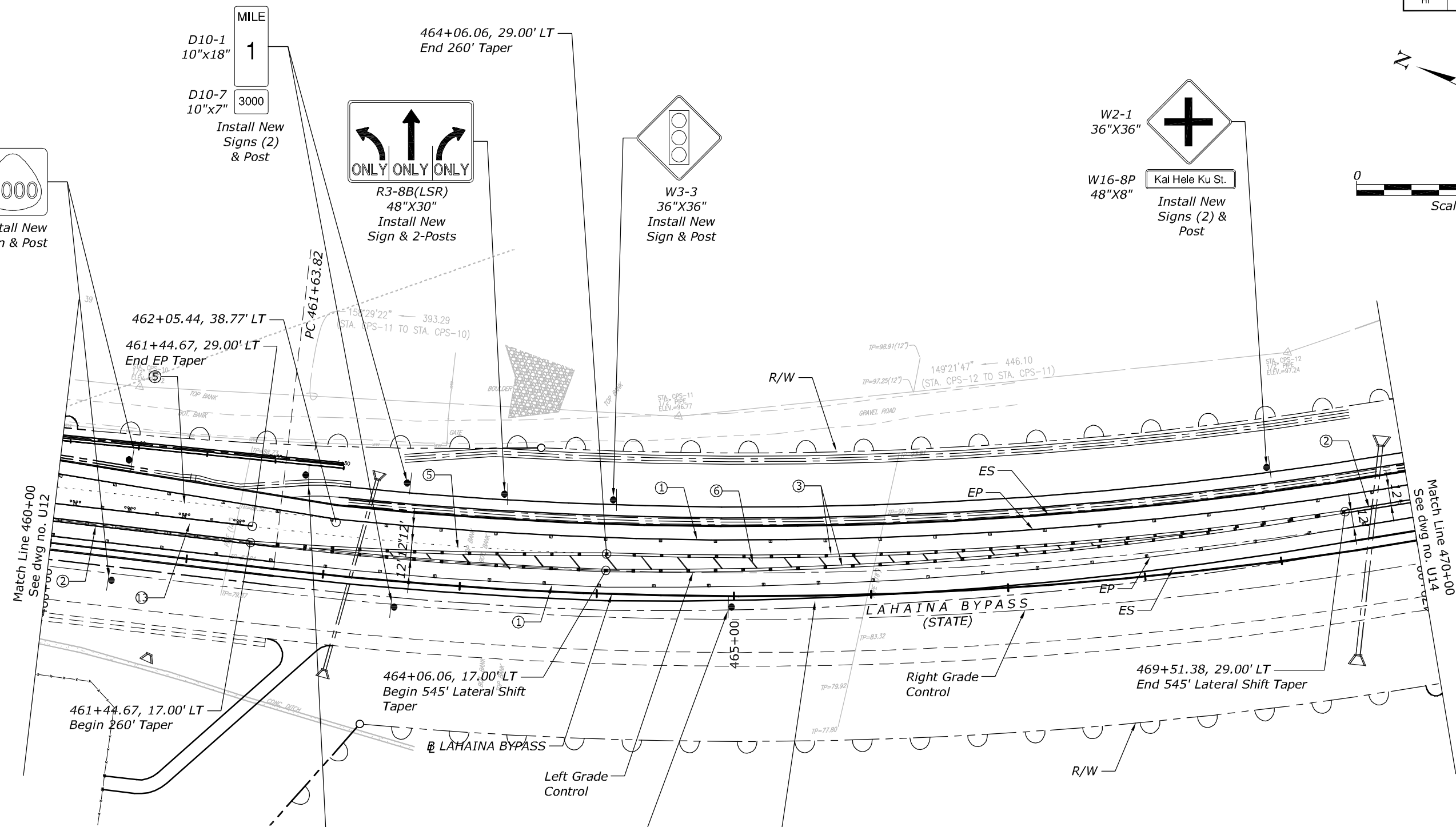
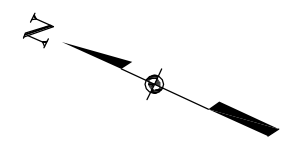
THIS WORK WAS PREPARED BY ME OR UNDER MY SUPERVISION.  
WILSON OKAMOTO CORPORATION APRIL 30, 2020 LIC. EXP. DATE

U.S. DEPARTMENT OF TRANSPORTATION  
FEDERAL HIGHWAY ADMINISTRATION  
CENTRAL FEDERAL LANDS HIGHWAY DIVISION

U.S. CUSTOMARY

**SIGNING & PAVEMENT MARKING PLAN**

STATE	PROJECT	SHEET NO.
HI	HI STP SR 30(1)	U13



M1-6  
(3000)  
24"X24"  
Install New Sign & Post

MILE 1  
D10-1  
10"x18"  
D10-7  
10"x7"  
3000  
Install New Signs (2) & Post

R3-8B(LSR)  
48"X30"  
Install New Sign & 2-Posts

W3-3  
36"X36"  
Install New Sign & Post

W2-1  
36"X36"  
W16-8P  
48"X8"  
Kai Hele Ku St.  
Install New Signs (2) & Post

**LEGEND**

- ① 4" White Stripe w/ Type C RPM at 40' O.C.
- ② 4" Double Yellow Stripe w/ Type D RPM at 20' O.C.
- ③ 4" Double Yellow Stripe w/ Type H RPM at 20' O.C.
- ⑤ 4" Dashed White Stripe 2' Long at 6' O.C.
- ⑥ 12" Yellow Diagonal Stripe at 20' O.C.
- ⑦ 4" White Stripe w/ Type C RPM at 20' O.C. & 4 Each, Type A RPM at 40' O.C.

D11-1  
24"X18"  
R8-3A  
36"X36"  
M6-2  
12"X9"  
R7-201A  
24"X12"  
Install New Signs (2) & Post

Install New Signs (2) & Post

SPEED LIMIT 45  
R2-1(45)  
36"X48"  
Install New Sign & 2-Post



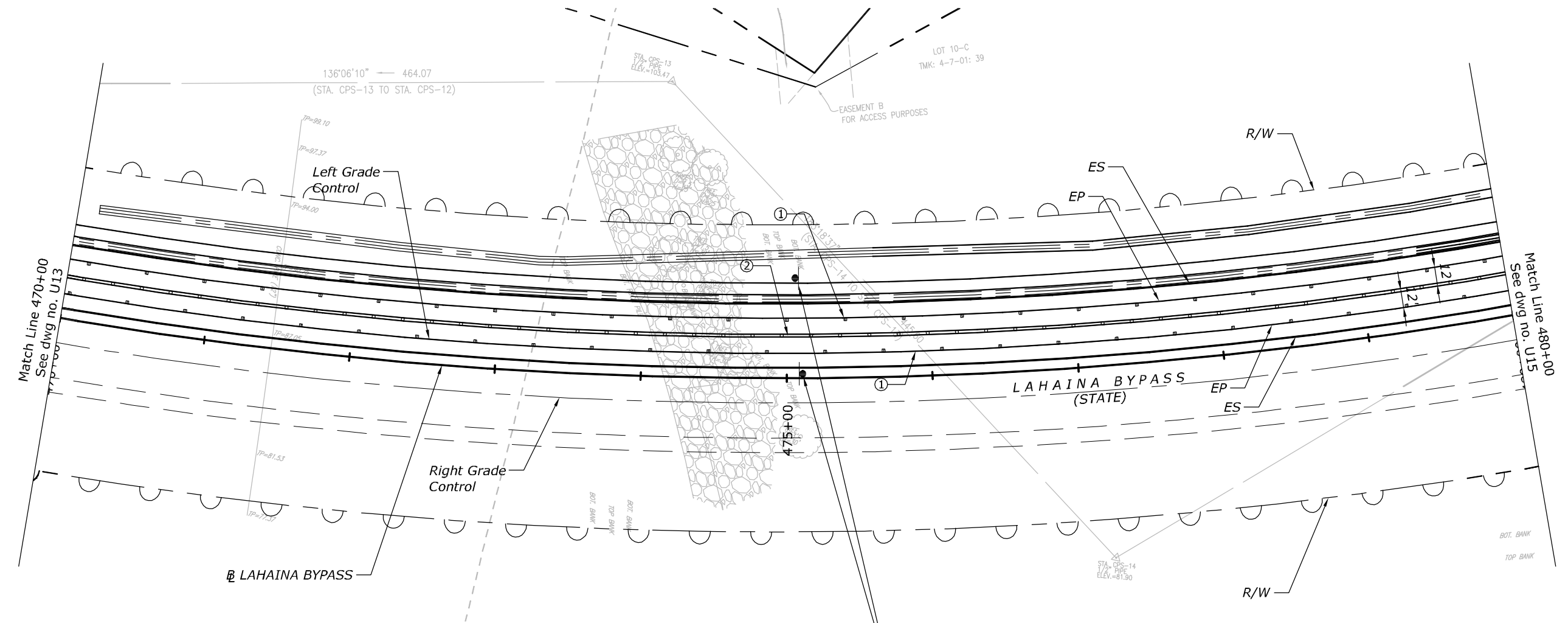
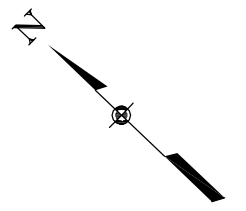
U.S. DEPARTMENT OF TRANSPORTATION  
FEDERAL HIGHWAY ADMINISTRATION  
CENTRAL FEDERAL LANDS HIGHWAY DIVISION

U.S. CUSTOMARY

**SIGNING & PAVEMENT MARKING PLAN**

THIS WORK WAS PREPARED BY ME OR UNDER MY SUPERVISION.  
WILSON OKAMOTO CORPORATION APRIL 30, 2020 LIC. EXP. DATE

STATE	PROJECT	SHEET NO.
HI	HI STP SR 30(1)	U14



**LEGEND**

- ① 4" White Stripe w/ Type C RPM at 40' O.C.
- ② 4" Double Yellow Stripe w/ Type D RPM at 20' O.C.

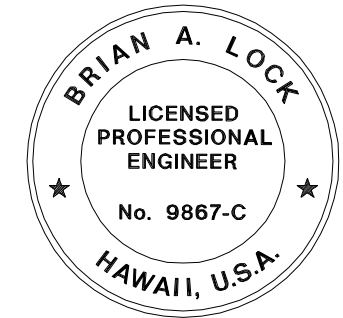


R8-3A  
36"X36"



R7-201A  
24"X12"

Install New  
Signs (2)  
& Post



THIS WORK WAS PREPARED BY ME  
OR UNDER MY SUPERVISION.

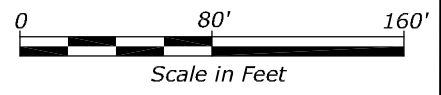
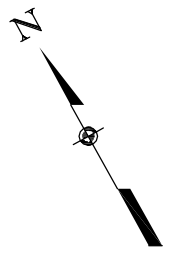
WILSON OKAMOTO CORPORATION APRIL 30, 2020  
LIC. EXP. DATE

U.S. DEPARTMENT OF TRANSPORTATION  
FEDERAL HIGHWAY ADMINISTRATION  
CENTRAL FEDERAL LANDS HIGHWAY DIVISION

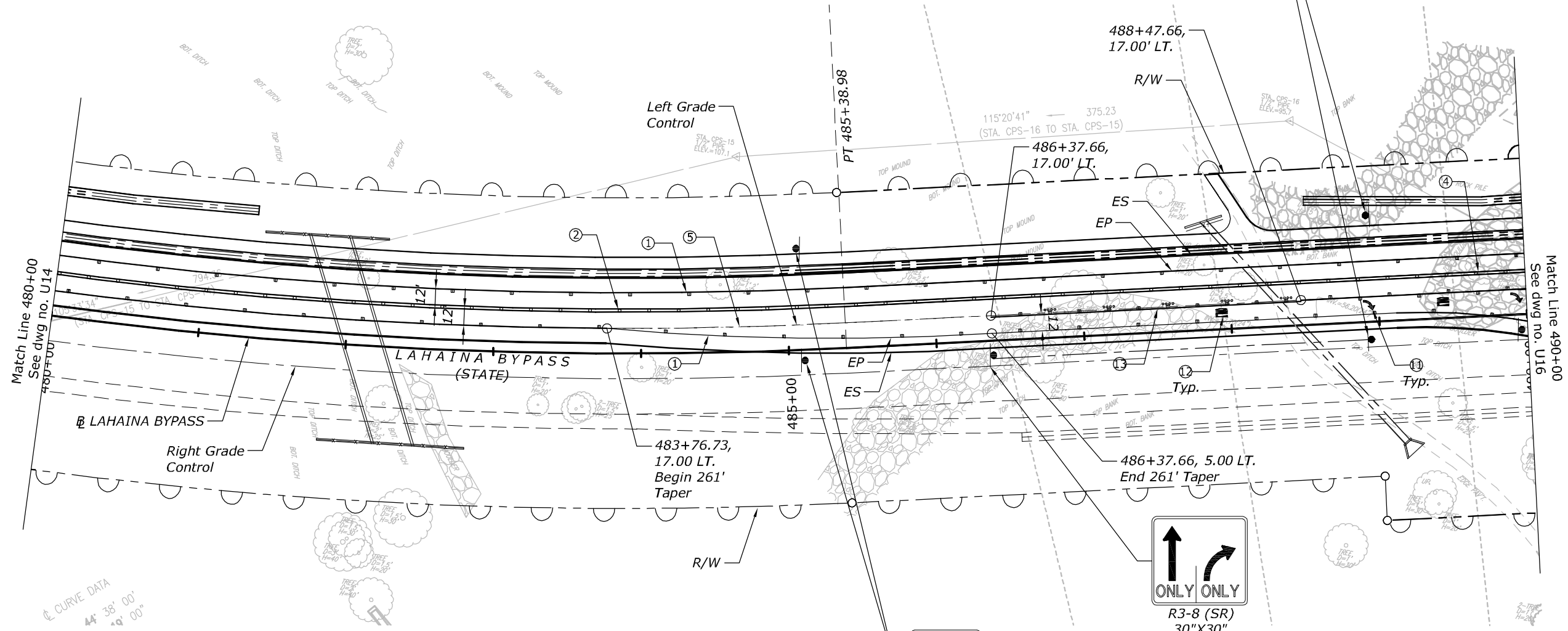
U.S. CUSTOMARY

**SIGNING & PAVEMENT  
MARKING PLAN**

STATE	PROJECT	SHEET NO.
HI	HI STP SR 30(1)	U15



MILE  
**0**  
**.5**  
 3000  
 D10-1a  
 10"x27"  
 D10-7  
 10"x7"  
 Install New  
 Signs (2)  
 & Post

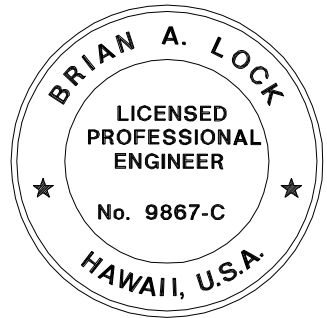


**LEGEND**

- ① 4" White Stripe w/ Type C RPM at 40' O.C.
- ② 4" Double Yellow Stripe w/ Type D RPM at 20' O.C.
- ④ 8" White Stripe w/ Type C RPM at 20' O.C.
- ⑤ 4" Dashed White Stripe 2' Long at 6' O.C.
- ① White Pavement Arrow
- ② White Pavement Word
- ③ 4" White Stripe w/ Type C RPM at 20' O.C. & 4 Each, Type A RPM at 40' O.C.

R8-3A  
36"x36"  
 R7-201A  
24"x12"  
 Install New  
 Signs (2)  
 & Post

ONLY ONLY  
 R3-8 (SR)  
 30"x30"  
 Install New  
 Sign & Post



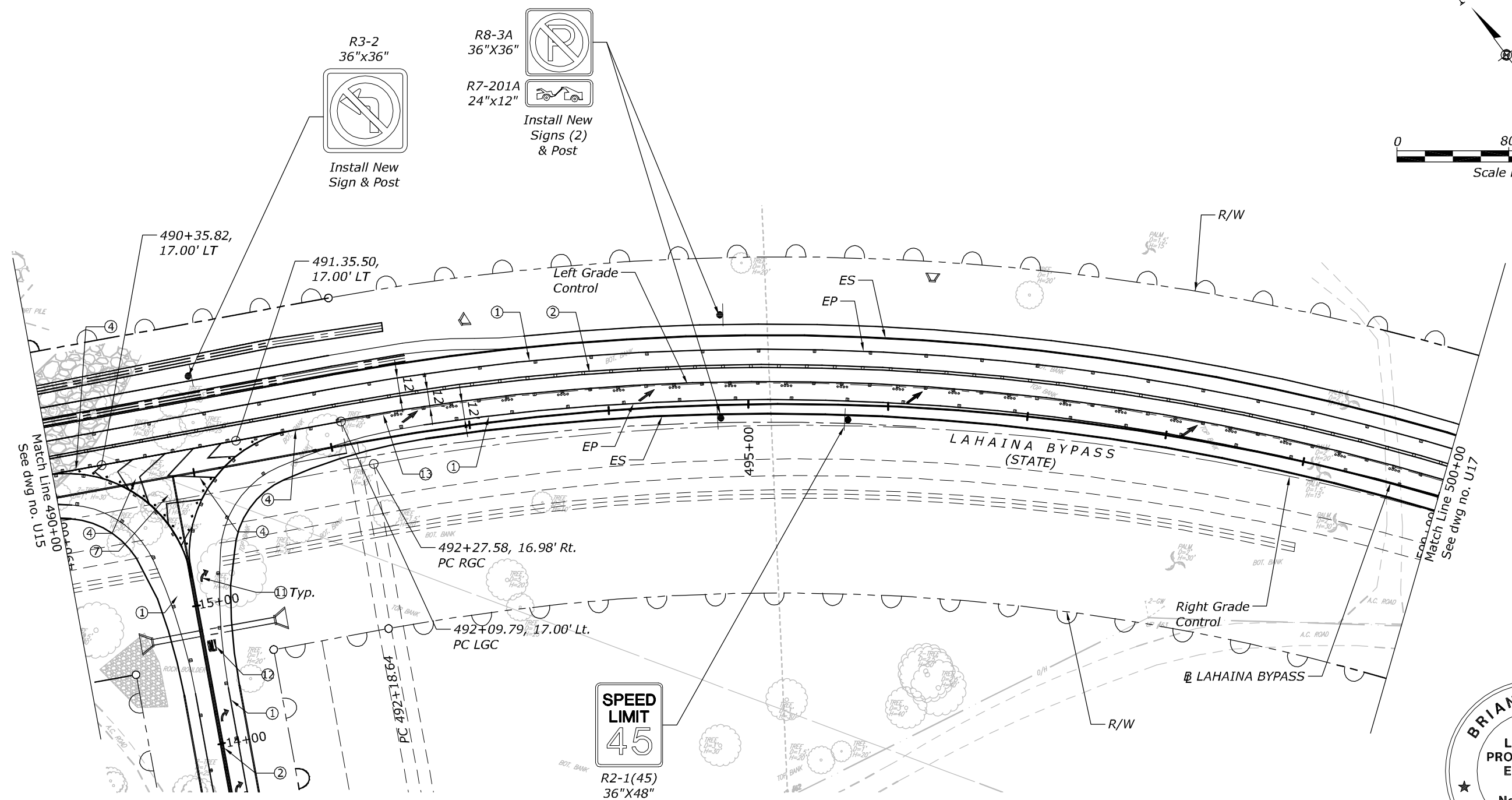
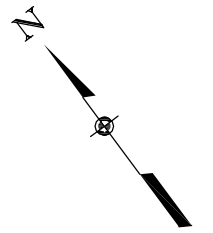
U.S. DEPARTMENT OF TRANSPORTATION  
 FEDERAL HIGHWAY ADMINISTRATION  
 CENTRAL FEDERAL LANDS HIGHWAY DIVISION

U.S. CUSTOMARY

**SIGNING & PAVEMENT MARKING PLAN**

THIS WORK WAS PREPARED BY ME  
 OR UNDER MY SUPERVISION.  
 WILSON OKAMOTO CORPORATION APRIL 30, 2020  
 LIC. EXP. DATE

STATE	PROJECT	SHEET NO.
HI	HI STP SR 30(1)	U16

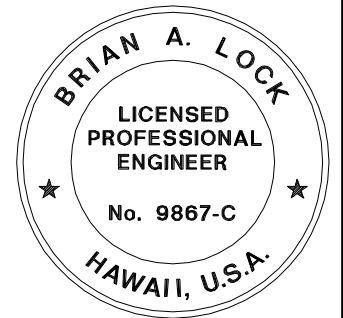


**LEGEND**

- ① 4" White Stripe w/ Type C RPM at 40' O.C.
- ② 4" Double Yellow Stripe w/ Type D RPM at 20' O.C.
- ④ 8" White Stripe w/ Type C RPM at 20' O.C.
- ⑦ 12" White Diagonal Stripe at 20' O.C.
- ① White Pavement Arrow
- ② White Pavement Word
- ⑬ 4" White Stripe w/ Type C RPM at 20' O.C. & 4 Each, Type A RPM at 40' O.C.

**NOTES:**

1. Grade controls are not parallel with LAHAINA BYPASS between 492+09.79 and 503+58.23



THIS WORK WAS PREPARED BY ME OR UNDER MY SUPERVISION.

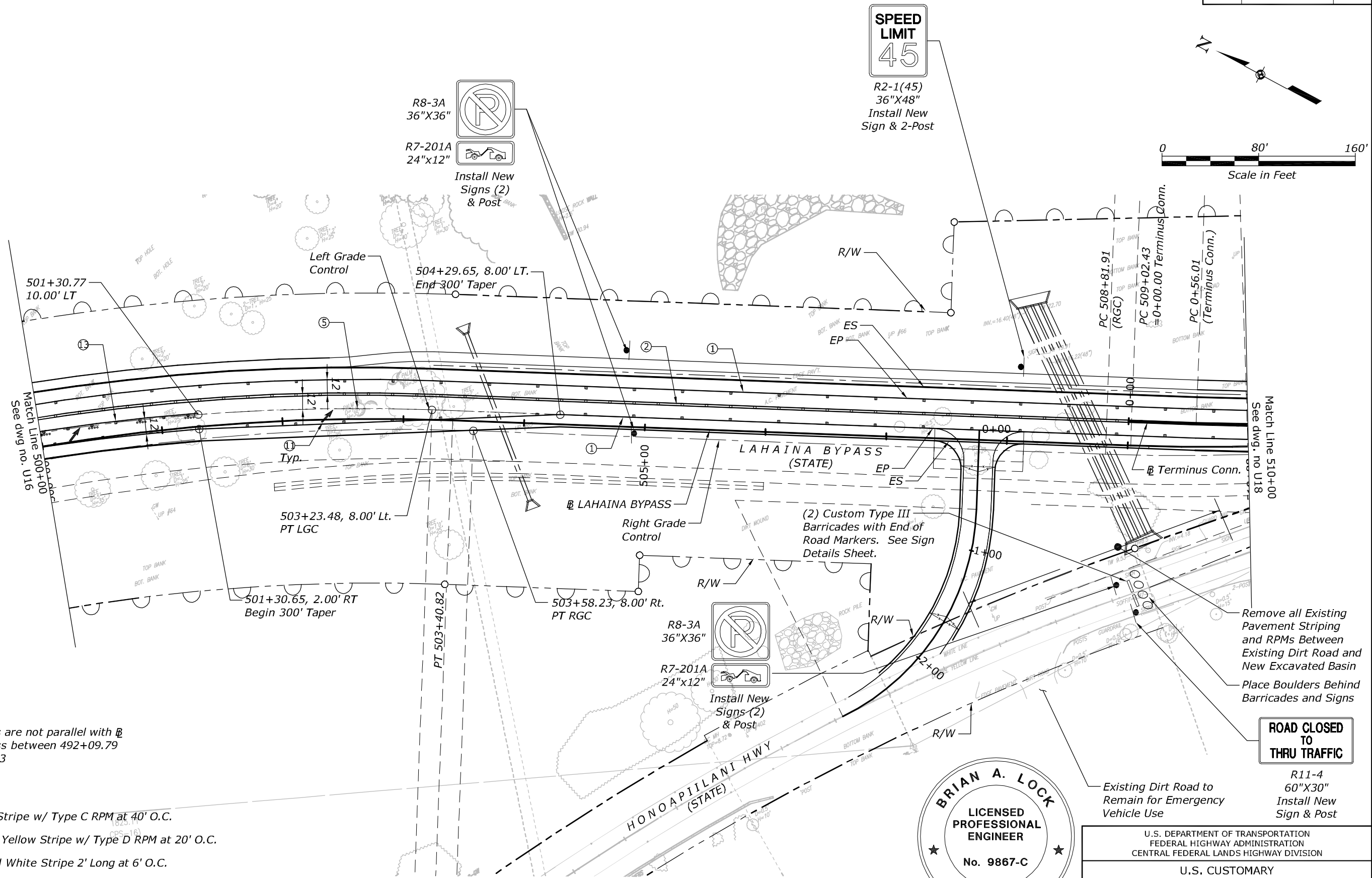
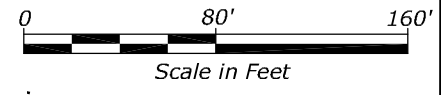
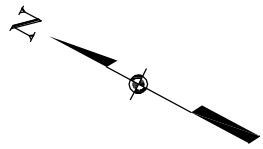
WILSON OKAMOTO CORPORATION APRIL 30, 2020  
LIC. EXP. DATE

U.S. DEPARTMENT OF TRANSPORTATION  
FEDERAL HIGHWAY ADMINISTRATION  
CENTRAL FEDERAL LANDS HIGHWAY DIVISION

U.S. CUSTOMARY

**SIGNING & PAVEMENT MARKING PLAN**

STATE	PROJECT	SHEET NO.
HI	HI STP SR 30(1)	U17



**NOTES:**

- Grade controls are not parallel with Lahaina Bypass between 492+09.79 and 503+58.23

**LEGEND**

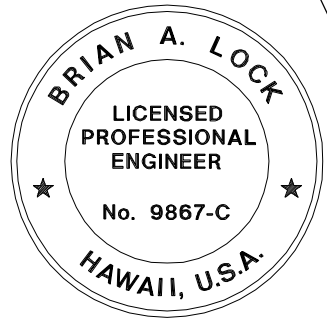
- ① 4" White Stripe w/ Type C RPM at 40' O.C.
- ② 4" Double Yellow Stripe w/ Type D RPM at 20' O.C.
- ⑤ 4" Dashed White Stripe 2' Long at 6' O.C.
- ⑪ White Pavement Arrow
- ⑬ 4" White Stripe w/ Type C RPM at 20' O.C. & 4 Each, Type A RPM at 40' O.C.

Remove all Existing Pavement Striping and RPMs Between Existing Dirt Road and New Excavated Basin  
Place Boulders Behind Barricades and Signs

**ROAD CLOSED TO THRU TRAFFIC**

R11-4  
60"X30"  
Install New Sign & Post

Existing Dirt Road to Remain for Emergency Vehicle Use



THIS WORK WAS PREPARED BY ME OR UNDER MY SUPERVISION.

WILSON OKAMOTO CORPORATION APRIL 30, 2020 LIC. EXP. DATE

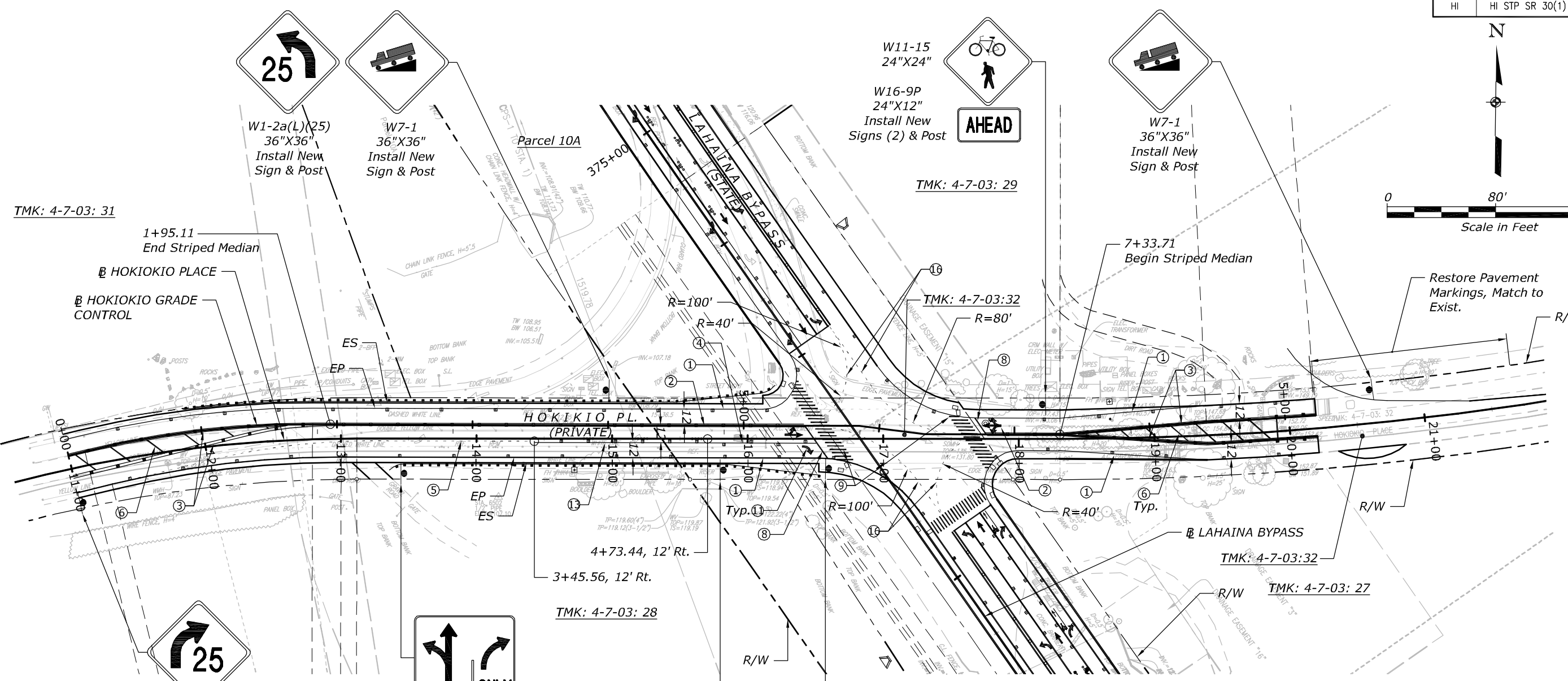
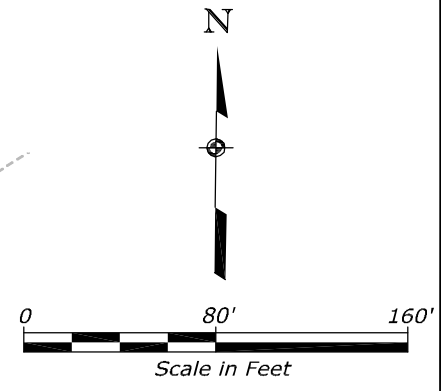
U.S. DEPARTMENT OF TRANSPORTATION  
FEDERAL HIGHWAY ADMINISTRATION  
CENTRAL FEDERAL LANDS HIGHWAY DIVISION

U.S. CUSTOMARY

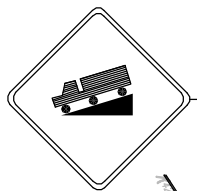
**SIGNING & PAVEMENT MARKING PLAN**



STATE	PROJECT	SHEET NO.
HI	HI STP SR 30(1)	U19



W1-2a(L)(25)  
36"X36"  
Install New  
Sign & Post



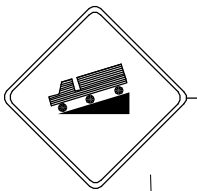
W7-1  
36"X36"  
Install New  
Sign & Post



W11-15  
24"X24"  
W16-9P  
24"X12"  
Install New  
Signs (2) & Post



TMK: 4-7-03: 29



W7-1  
36"X36"  
Install New  
Sign & Post

TMK: 4-7-03: 31

1+95.11  
End Striped Median  
HOKIOKIO PLACE  
HOKIOKIO GRADE  
CONTROL

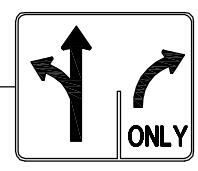
TMK: 4-7-03:32

7+33.71  
Begin Striped Median

Restore Pavement  
Markings, Match to  
Exist.



W1-2a(R)(25)  
36"X36"  
Install New  
Sign & Post



R3-8(LSR)  
30"X30"  
Install New  
Sign(2) & Post



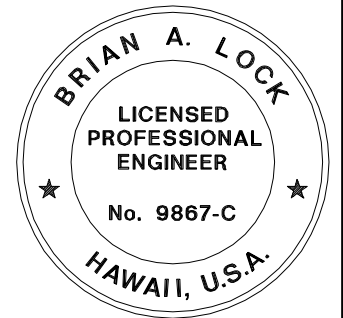
W11-15  
24"X24"  
W16-9P  
24"X12"  
Install New  
Signs (2) & Post



R3-8(LSR)  
30"X30"  
Install New  
Sign(2) & Post

**LEGEND**

- ① 4" White Stripe w/ Type C RPM at 40' O.C.
- ② 4" Double Yellow Stripe w/ Type D RPM at 20' O.C.
- ③ 4" Double Yellow Stripe w/ Type H RPM at 20' O.C.
- ④ 8" White Stripe w/ Type C RPM at 20' O.C.
- ⑤ 4" Dashed White Stripe 2' Long at 6' O.C.
- ⑥ 12" Yellow Diagonal Stripe at 20' O.C.
- ⑧ 12" White Stop Line
- ⑨ 12" White Crosswalk
- ⑩ White Pavement Arrow
- ⑬ 4" White Stripe w/ Type C RPM at 20' O.C. & 4 Each, Type A RPM at 40' O.C.
- ⑮ 4" Dashed Yellow Stripe 2' Long at 6' O.C.



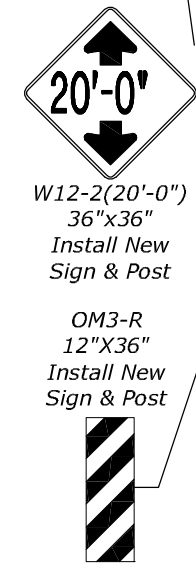
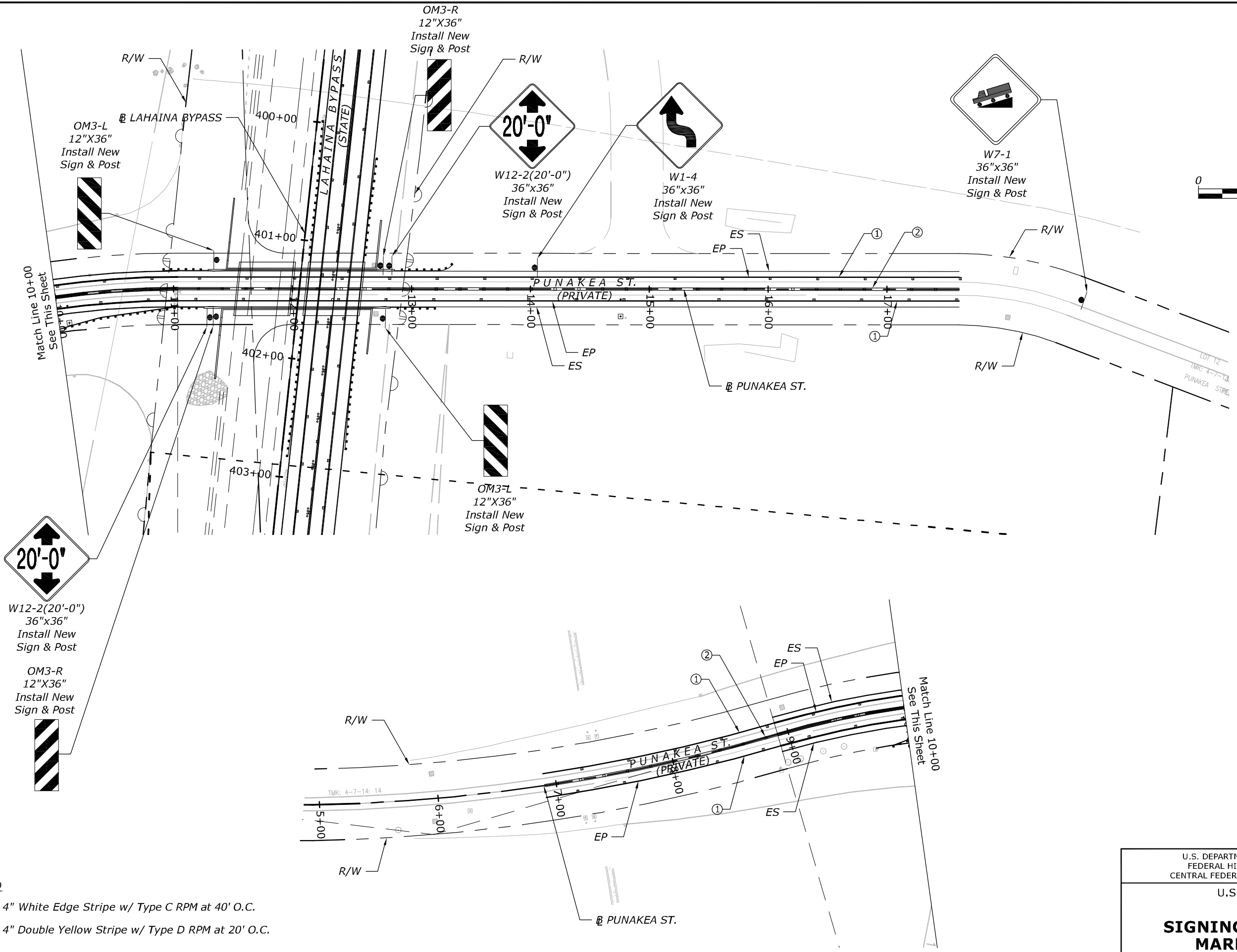
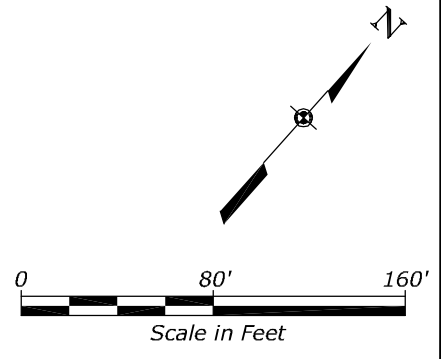
THIS WORK WAS PREPARED BY ME  
OR UNDER MY SUPERVISION.

APRIL 30, 2020  
WILSON OKAMOTO CORPORATION LIC. EXP. DATE

U.S. DEPARTMENT OF TRANSPORTATION  
FEDERAL HIGHWAY ADMINISTRATION  
CENTRAL FEDERAL LANDS HIGHWAY DIVISION

U.S. CUSTOMARY  
**SIGNING & PAVEMENT  
MARKING PLAN**

STATE	PROJECT	SHEET NO.
HI	HI STP SR 30(1)	U20

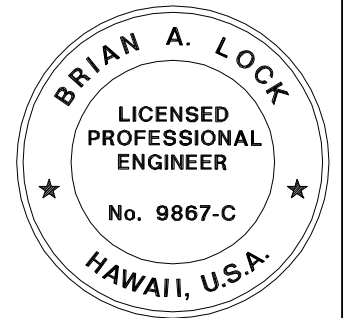


OM3-R  
12"x36"  
Install New  
Sign & Post



**LEGEND**

- ① 4" White Edge Stripe w/ Type C RPM at 40' O.C.
- ② 4" Double Yellow Stripe w/ Type D RPM at 20' O.C.



THIS WORK WAS PREPARED BY ME OR UNDER MY SUPERVISION.

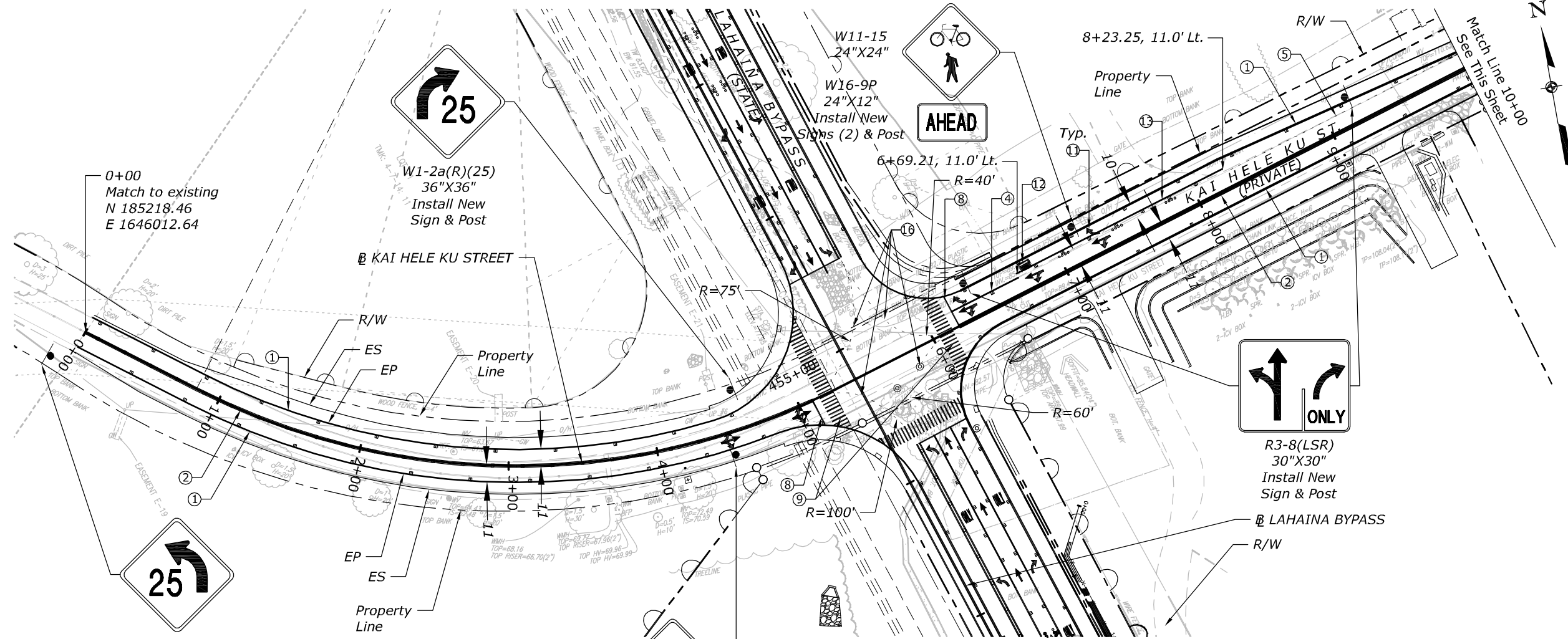
WILSON OKAMOTO CORPORATION APRIL 30, 2020 LIC. EXP. DATE

U.S. DEPARTMENT OF TRANSPORTATION  
FEDERAL HIGHWAY ADMINISTRATION  
CENTRAL FEDERAL LANDS HIGHWAY DIVISION

U.S. CUSTOMARY

**SIGNING & PAVEMENT MARKING PLAN**

STATE	PROJECT	SHEET NO.
HI	HI STP SR 30(1)	U21



0+00  
Match to existing  
N 185218.46  
E 1646012.64

W1-2a(R)(25)  
36\"X36\"  
Install New  
Sign & Post

W11-15  
24\"X24\"  
W16-9P  
24\"X12\"  
Install New  
Signs (2) & Post

8+23.25, 11.0' Lt.

R3-8(LSR)  
30\"X30\"  
Install New  
Sign & Post

W1-2a(L)(25)  
36\"X36\"  
Install New  
Sign & Post

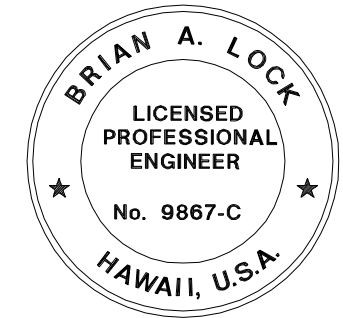
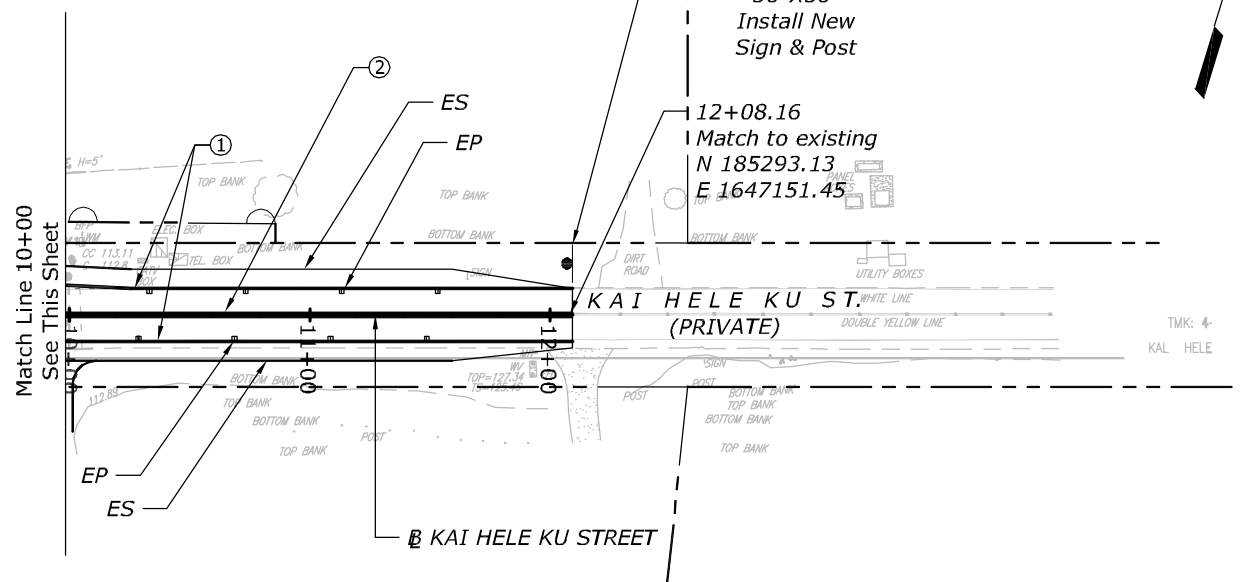
W11-15  
24\"X24\"  
W16-9P  
24\"X12\"  
Install New  
Signs (2) & Post

W7-1  
36\"X36\"  
Install New  
Sign & Post

NOTE:  
1. Include Destination Sign at Kai Hele Ku St.  
and Honoapiilani Hwy Intersection. See  
Intersection Sign Detail on Sht. U25.

**LEGEND**

- ① 4" White Stripe w/ Type C RPM at 40' O.C.
- ② 4" Double Yellow Stripe w/ Type D RPM at 20' O.C.
- ④ 8" White Stripe w/ Type C RPM at 20' O.C.
- ⑤ 4" Dashed White Stripe 2' Long at 6' O.C.
- ⑧ 12" White Stop Line
- ⑨ 12" White Crosswalk
- ⑩ White Pavement Arrow
- ⑫ White Pavement Word
- ⑬ 4" White Stripe w/ Type C RPM at 20' O.C. & 4 Each, Type A RPM at 40' O.C.
- ⑮ 4" Dashed Yellow Stripe 2' Long at 6' O.C.



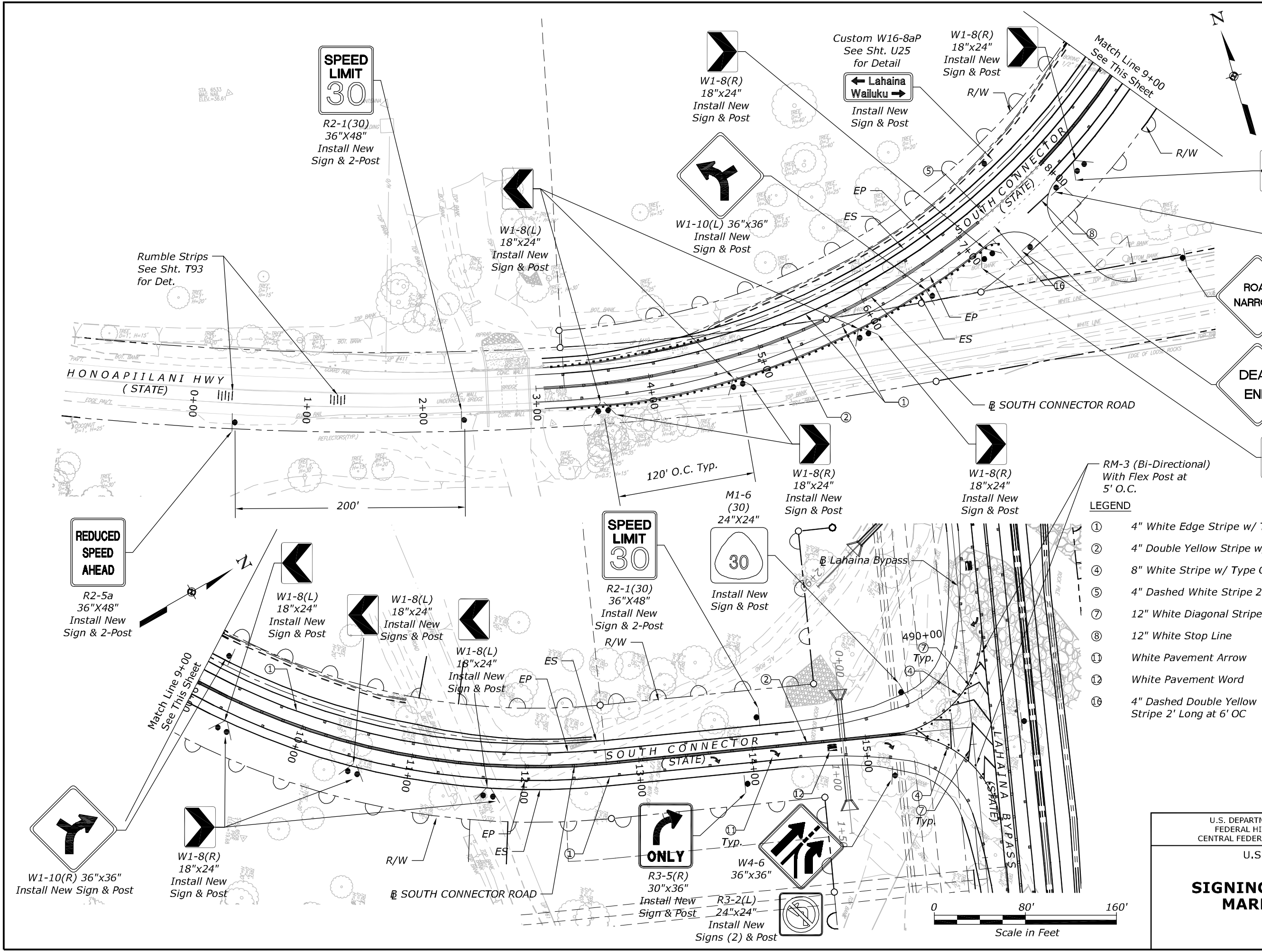
U.S. DEPARTMENT OF TRANSPORTATION  
FEDERAL HIGHWAY ADMINISTRATION  
CENTRAL FEDERAL LANDS HIGHWAY DIVISION

U.S. CUSTOMARY

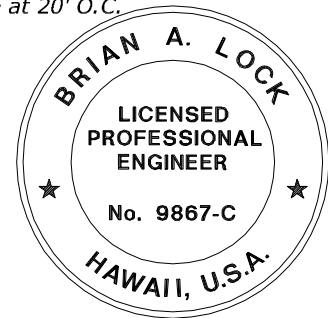
**SIGNING & PAVEMENT MARKING PLAN**

THIS WORK WAS PREPARED BY ME  
OR UNDER MY SUPERVISION.  
WILSON OKAMOTO CORPORATION APRIL 30, 2020  
LIC. EXP. DATE

STATE	PROJECT	SHEET NO.
HI	HI STP SR 30(1)	U22



- LEGEND**
- ① 4" White Edge Stripe w/ Type C RPM at 40' O.C.
  - ② 4" Double Yellow Stripe w/ Type D RPM at 20' O.C.
  - ④ 8" White Stripe w/ Type C RPM at 20' O.C.
  - ⑤ 4" Dashed White Stripe 2' Long at 6' OC
  - ⑦ 12" White Diagonal Stripe at 20' O.C.
  - ⑧ 12" White Stop Line
  - ⑩ White Pavement Arrow
  - ⑫ White Pavement Word
  - ⑬ 4" Dashed Double Yellow Stripe 2' Long at 6' OC



THIS WORK WAS PREPARED BY ME OR UNDER MY SUPERVISION.

WILSON OKAMOTO CORPORATION APRIL 30, 2020 LIC. EXP. DATE

U.S. DEPARTMENT OF TRANSPORTATION  
FEDERAL HIGHWAY ADMINISTRATION  
CENTRAL FEDERAL LANDS HIGHWAY DIVISION

U.S. CUSTOMARY

**SIGNING & PAVEMENT MARKING PLAN**

