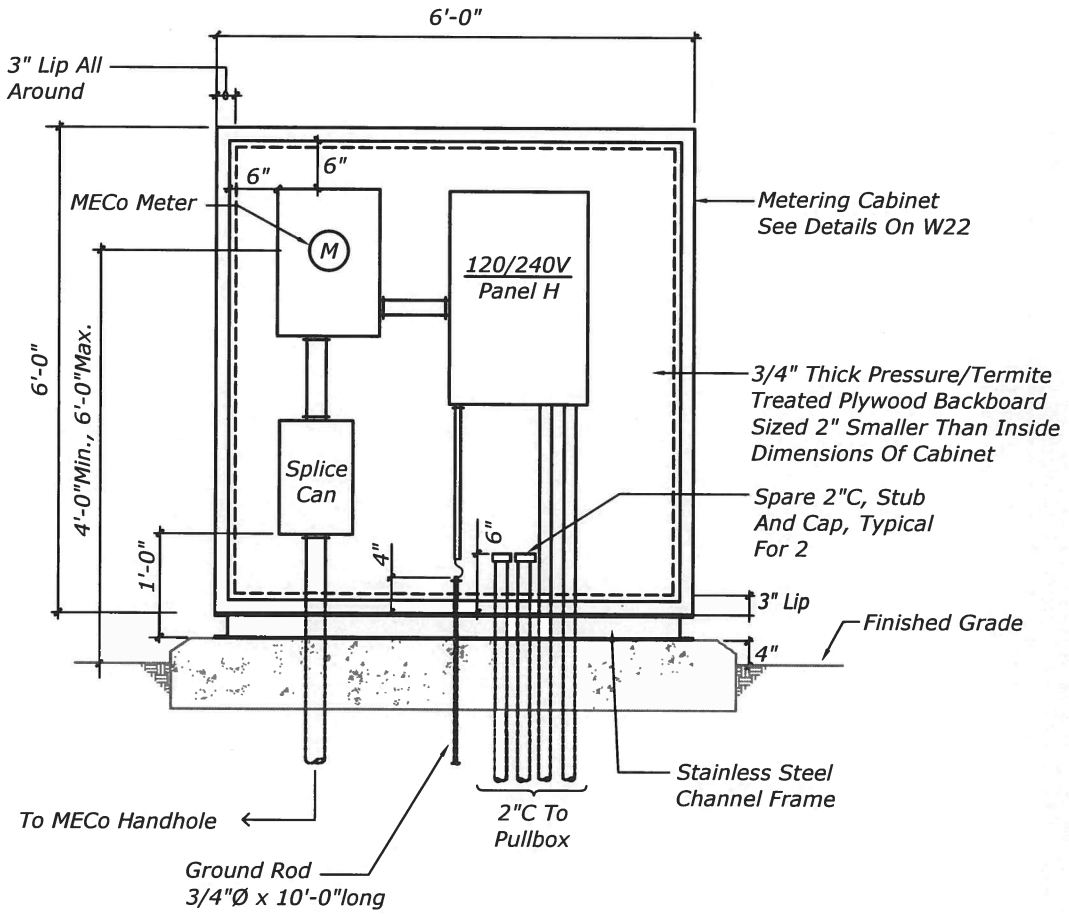


SERVICE EQUIPMENT DETAIL PLAN (FROM W9)
 Scale: 1" = 5'

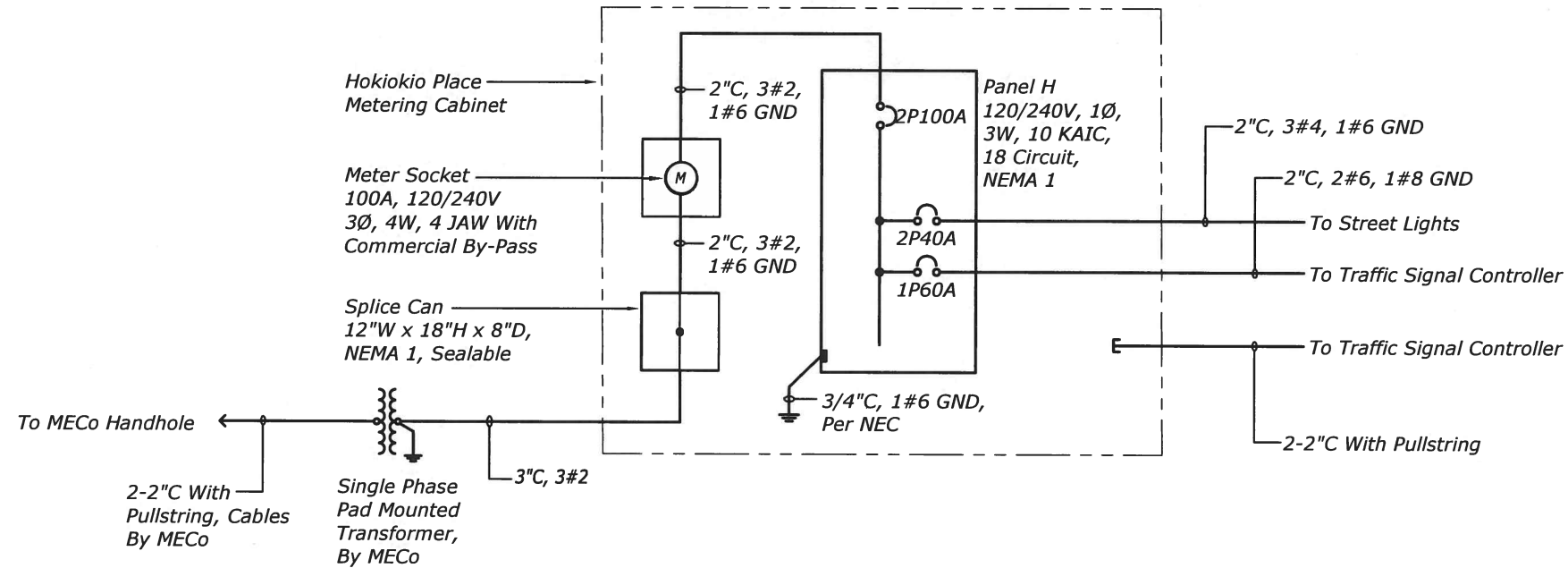


METER CABINET ELEVATION
 Scale: 1" = 5'

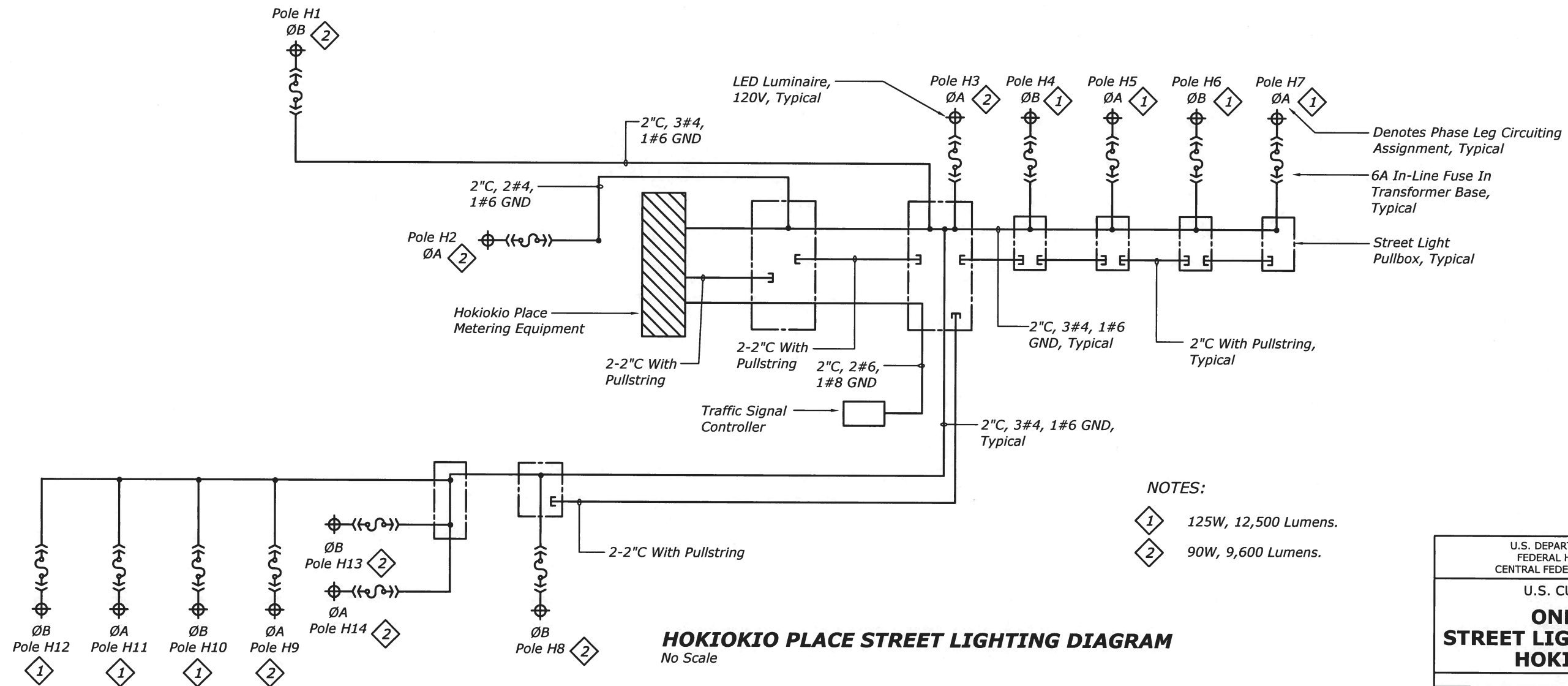


THIS WORK WAS PREPARED BY ME OR UNDER MY SUPERVISION AND CONSTRUCTION OF THIS PROJECT WILL BE UNDER MY OBSERVATION. "OBSERVATION OF CONSTRUCTION" IS DEFINED IN CHAPTER 16-115, HAWAII ADMINISTRATIVE RULES ENTITLED "PROFESSIONAL ENGINEERS, ARCHITECTS, SURVEYORS AND LANDSCAPE ARCHITECTS".
 APRIL 30, 2018
 LIC. EXP. DATE

U.S. DEPARTMENT OF TRANSPORTATION FEDERAL HIGHWAY ADMINISTRATION CENTRAL FEDERAL LANDS HIGHWAY DIVISION	
U.S. CUSTOMARY SPECIAL	
SERVICE EQUIPMENT DETAILS - HOKIOKIO PLACE	
SPECIAL	



HOKIOKIO PLACE ONE-LINE DIAGRAM
No Scale



HOKIOKIO PLACE STREET LIGHTING DIAGRAM
No Scale

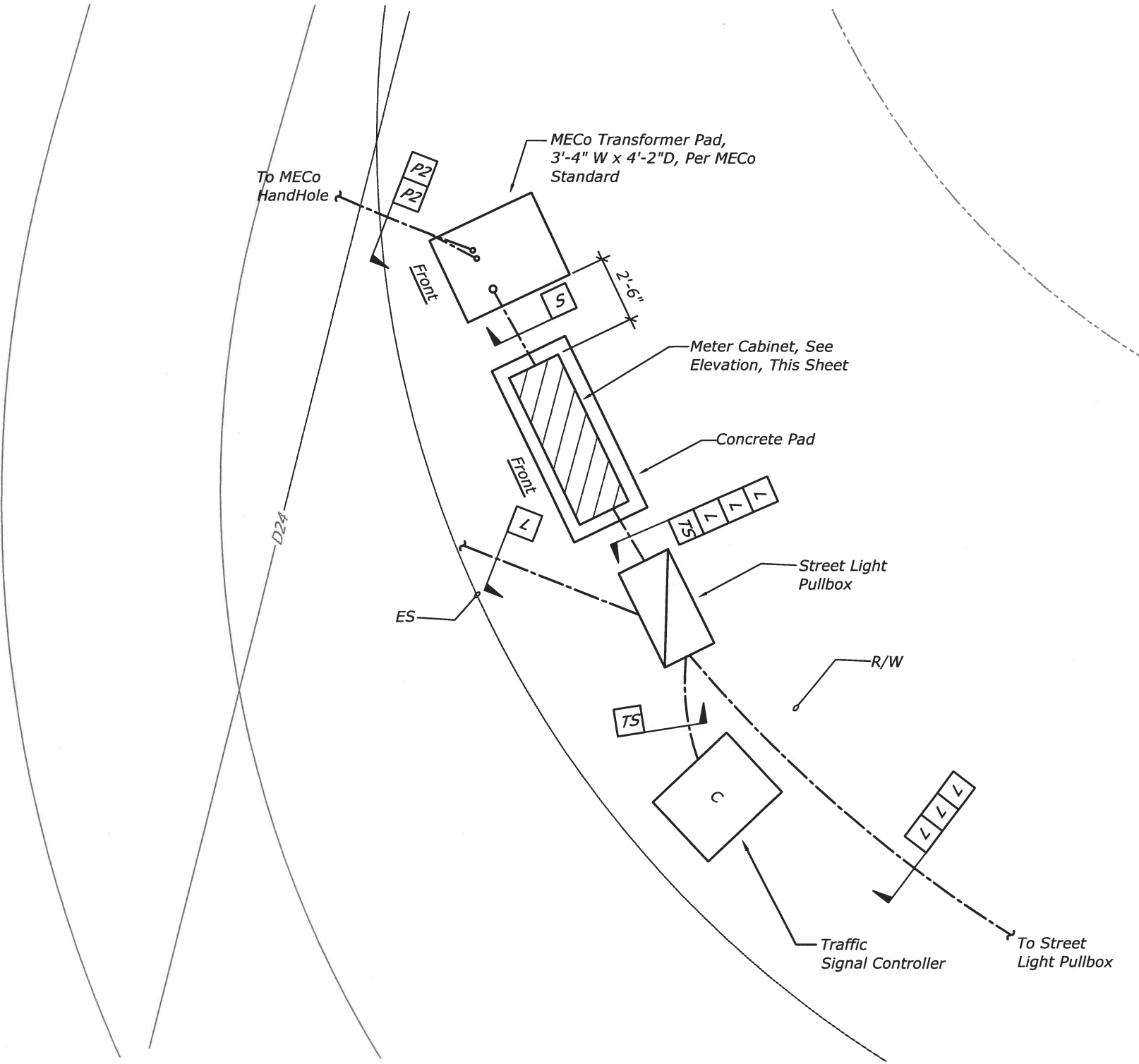
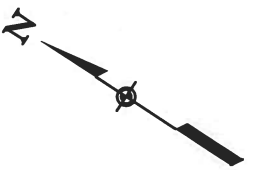
- NOTES:
- 1 125W, 12,500 Lumens.
 - 2 90W, 9,600 Lumens.



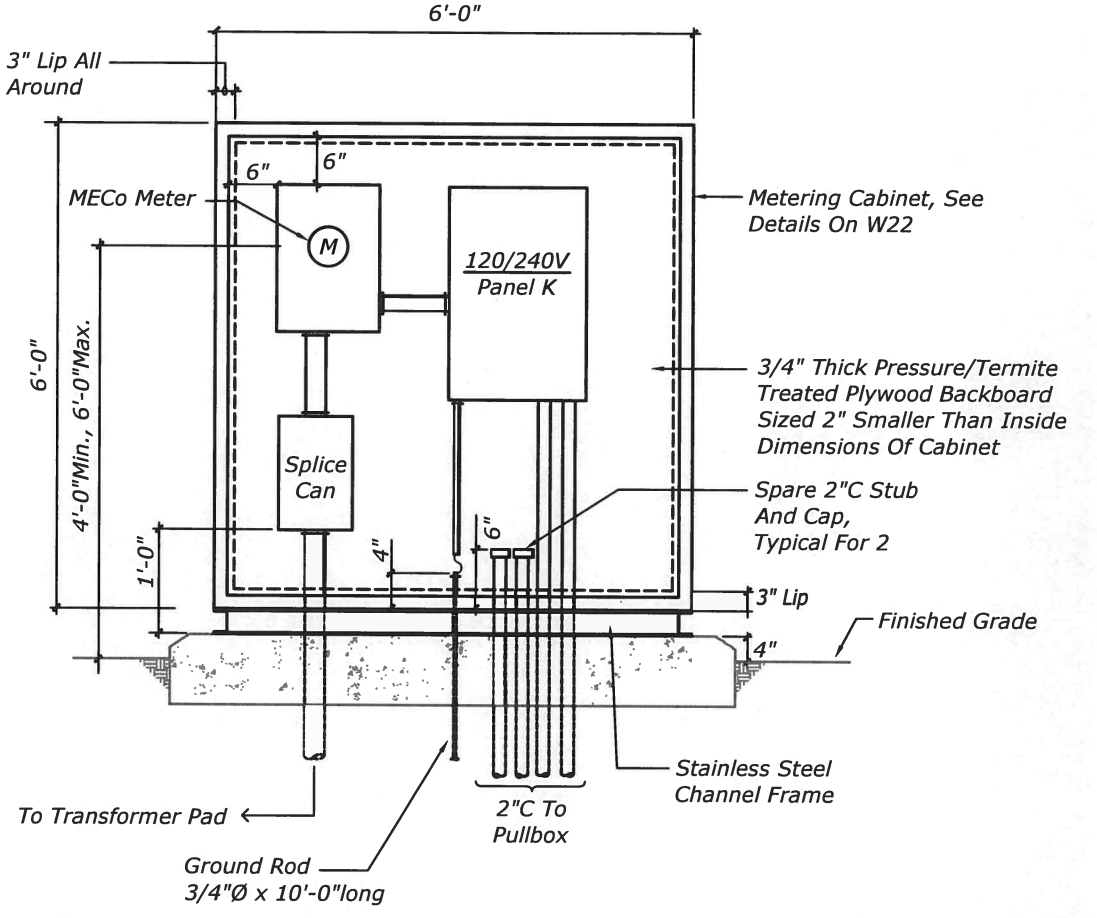
THIS WORK WAS PREPARED BY ME OR UNDER MY SUPERVISION AND CONSTRUCTION OF THIS PROJECT WILL BE UNDER MY OBSERVATION. "OBSERVATION OF CONSTRUCTION" IS DEFINED IN CHAPTER 16-115, HAWAII ADMINISTRATIVE RULES ENTITLED "PROFESSIONAL ENGINEERS, ARCHITECTS, SURVEYORS AND LANDSCAPE ARCHITECTS".
APR 30, 2018
LIC. EXP. DATE

U.S. DEPARTMENT OF TRANSPORTATION FEDERAL HIGHWAY ADMINISTRATION CENTRAL FEDERAL LANDS HIGHWAY DIVISION	
U.S. CUSTOMARY SPECIAL	
ONE LINE AND STREET LIGHTING DIAGRAM - HOKIOKIO PLACE	
SPECIAL	

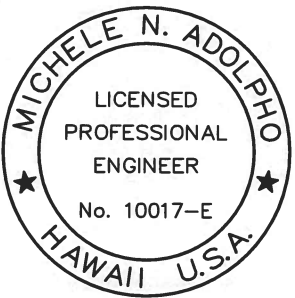
STATE	PROJECT	SHEET NO.
HI	HI STP SR 30(1)	W19



SERVICE EQUIPMENT DETAIL PLAN (FROM W12)
Scale: 1" = 5'



METER CABINET ELEVATION
Not to Scale

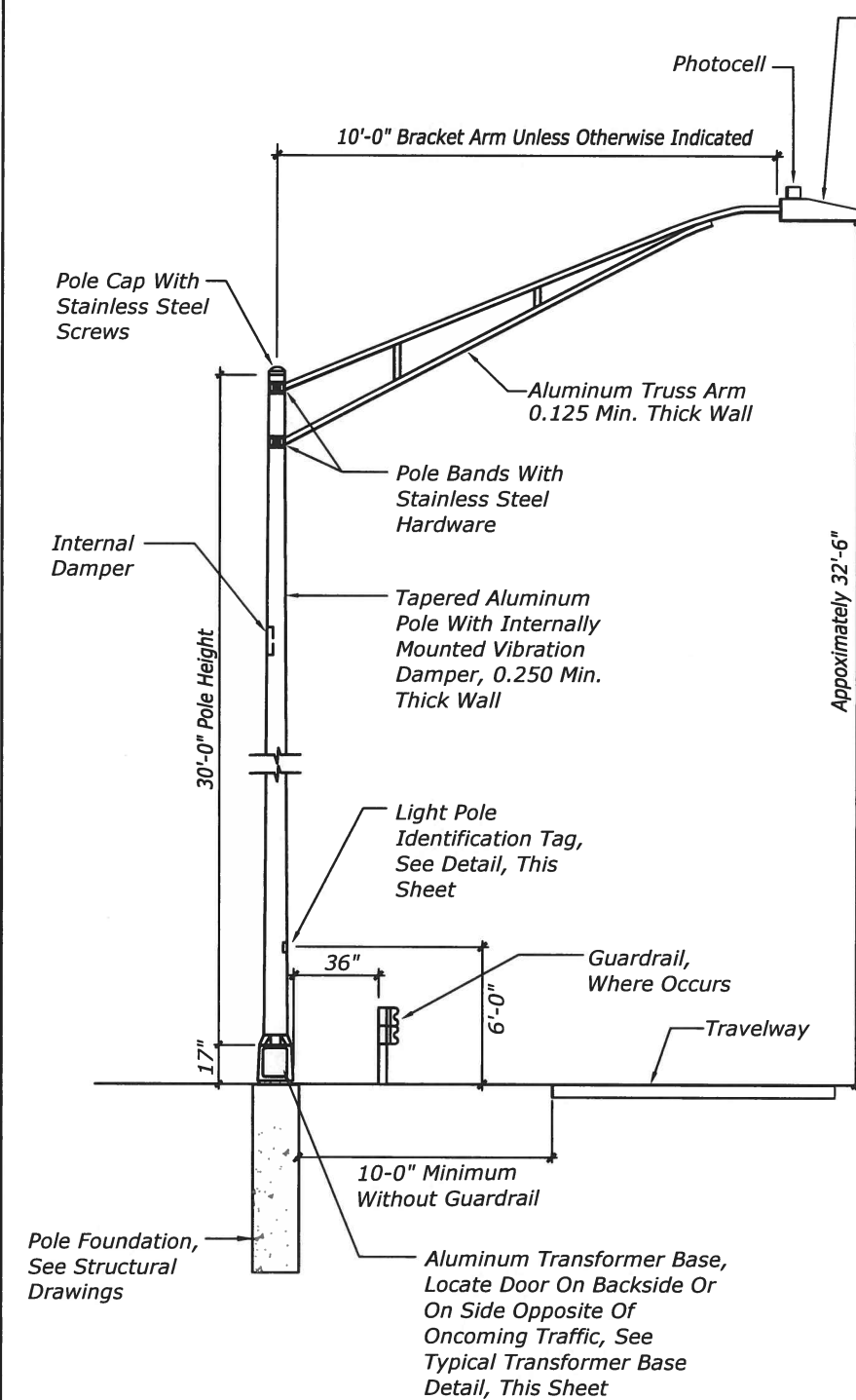


THIS WORK WAS PREPARED BY ME OR UNDER MY SUPERVISION AND CONSTRUCTION OF THIS PROJECT WILL BE UNDER MY OBSERVATION. "OBSERVATION OF CONSTRUCTION" IS DEFINED IN CHAPTER 16-115, HAWAII ADMINISTRATIVE RULES ENTITLED "PROFESSIONAL ENGINEERS, ARCHITECTS, SURVEYORS AND LANDSCAPE ARCHITECTS".
APRIL 30, 2018
ECS, INC. LIC. EXP. DATE

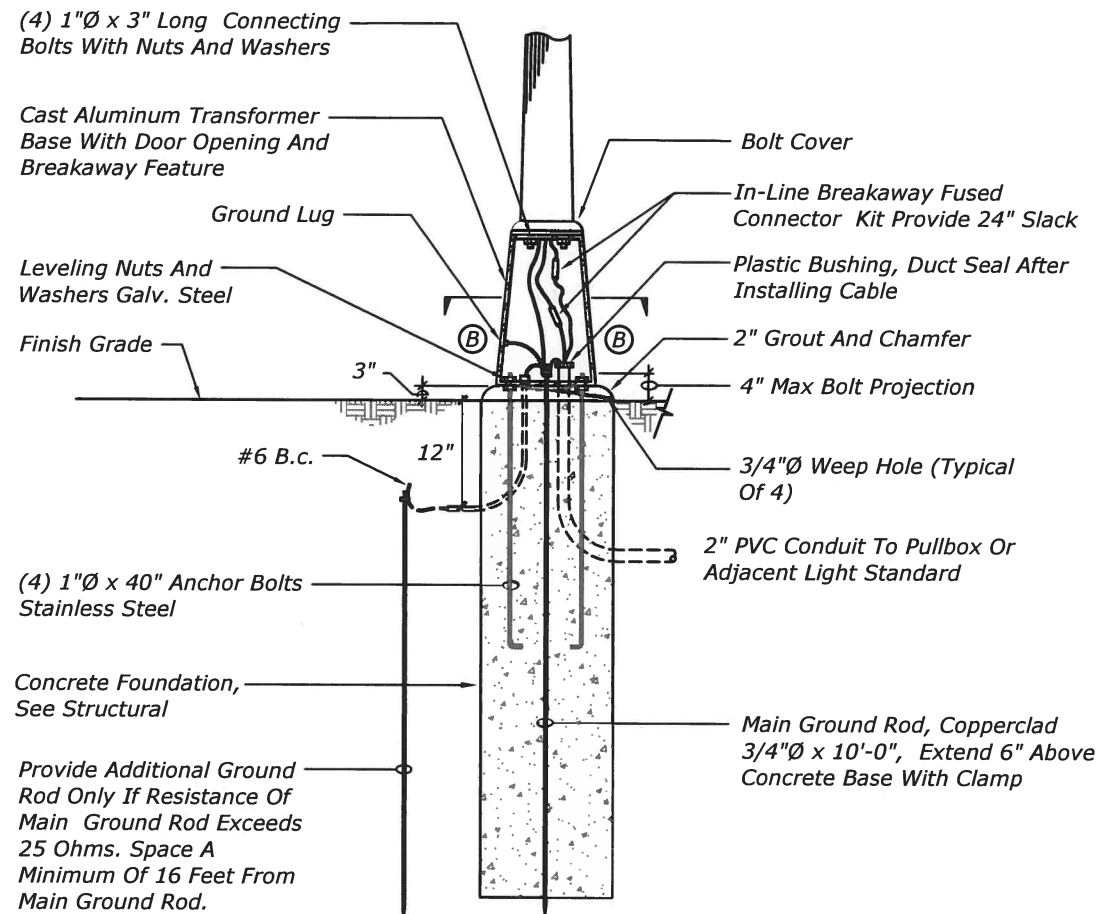
U.S. DEPARTMENT OF TRANSPORTATION
FEDERAL HIGHWAY ADMINISTRATION
CENTRAL FEDERAL LANDS HIGHWAY DIVISION

U.S. CUSTOMARY

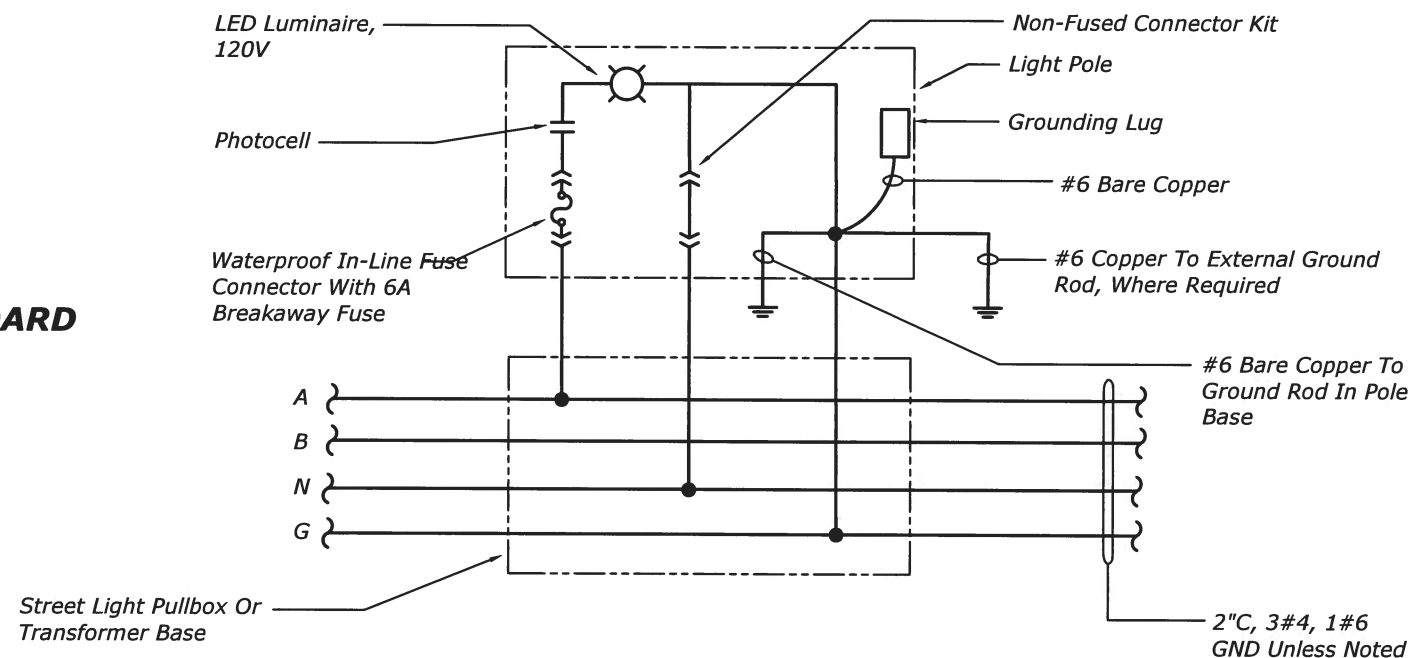
**SERVICE EQUIPMENT
DETAILS -
KAI HELE KU STREET**



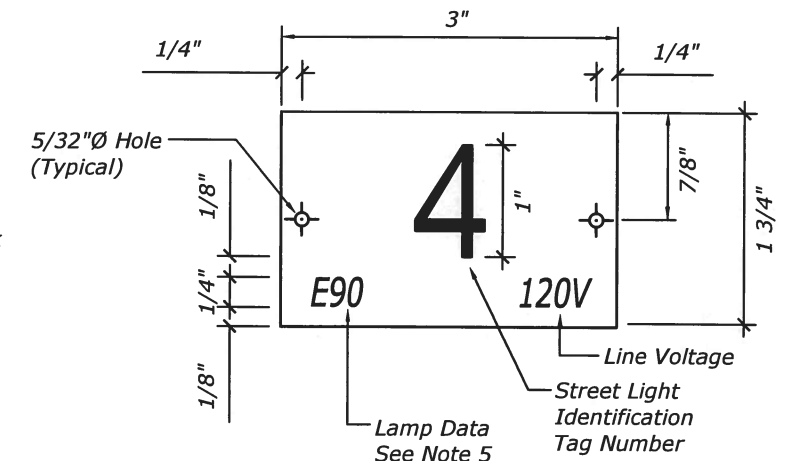
TYPICAL HIGHWAY LIGHTING STANDARD
Not to Scale



TYPICAL TRANSFORMER BASE
Not to Scale



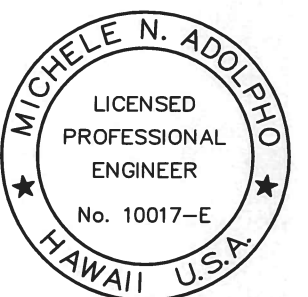
TYPICAL STREET LIGHT WIRING DIAGRAM
No Scale



NOTES:

1. Use 2-Ply Plastic - Black, White.
2. Number Size Shall Be 1" High And Engraved 1" Wide, White In Color (Number As Required).
3. Nomenclature Shall Be 1/4" High And Engraved 1/32" Wide, White In Color (Wattage And Voltage As Required).
4. Attach To Aluminum Poles With No. 7 Alum. Drive Screws.
5. Use "E" For LED Luminaires. Numeral Indicates Luminaire Wattage.

LIGHT POLE IDENTIFICATION TAG
Not to Scale



THIS WORK WAS PREPARED BY ME OR UNDER MY SUPERVISION AND CONSTRUCTION OF THIS PROJECT WILL BE UNDER MY OBSERVATION. "OBSERVATION OF CONSTRUCTION" IS DEFINED IN CHAPTER 16-115, HAWAII ADMINISTRATIVE RULES ENTITLED "PROFESSIONAL ENGINEERS, ARCHITECTS, SURVEYORS AND LANDSCAPE ARCHITECTS".

APRIL 30, 2018
LIC. EXP. DATE

U.S. DEPARTMENT OF TRANSPORTATION
FEDERAL HIGHWAY ADMINISTRATION
CENTRAL FEDERAL LANDS HIGHWAY DIVISION

U.S. CUSTOMARY SPECIAL

HIGHWAY LIGHTING DETAILS

SPECIAL

STATE	PROJECT	SHEET NO.
HI	HI STP SR 30(1)	W23

GENERAL PULLBOX NOTES:

1. Provide A Minimum Of One 16Ø x 3.0M Copperclad Ground Rod In Each Handhole. When Directed By The Engineer, Install Additional Ground Rods. Cost Of Ground Rods Shall Be Incidental To The Handholes.
2. All Pre-Cast Concrete Handholes Shall Be Manufactured In Two Pieces.
3. The Handhole With Cover Shall Be Capable Of Supporting An MS 18 Loading.
4. The Maximum Weight Of The Handhole Cover Shall Not Exceed 27 Kilograms.
5. The Openings For The Conduits On All Handholes Shall Be Pre-Cast Concrete Knockouts.
6. After Installing The Conduits In The Openings Of The Handholes, The Contractor Shall Fill The Excess Opening In The Pre-Cast Knockouts With Concrete Mortar.
7. Prior To Installing The Handholes, The Contractor Shall Level The Bottom Of The Trench And Achieve A Minimum Of 95% Relative Compaction Of The Bottom Of The Trench.
8. All Concrete Shall Be Class A (25MPA, Min.)
9. Rebars Shall Be Grade 300 And All Lapped Splices Shall Be 360mm Minimum.
10. The #57 Or #67 Size Aggregate Shall Conform To Latest Version Of AASHTO M43 (ASTM D 448).

NOTE:

All Units On This Sheet Are Indicated In Metric Unless Otherwise Noted. 1 Millimeter=0.039 Inch



THIS WORK WAS PREPARED BY ME OR UNDER MY SUPERVISION AND CONSTRUCTION OF THIS PROJECT WILL BE UNDER MY OBSERVATION. "OBSERVATION OF CONSTRUCTION" IS DEFINED IN CHAPTER 16-115, HAWAII ADMINISTRATIVE RULES ENTITLED "PROFESSIONAL ENGINEERS, ARCHITECTS, SURVEYORS AND LANDSCAPE ARCHITECTS".
ECS, INC. APRIL 30, 2018
LIC. EXP. DATE

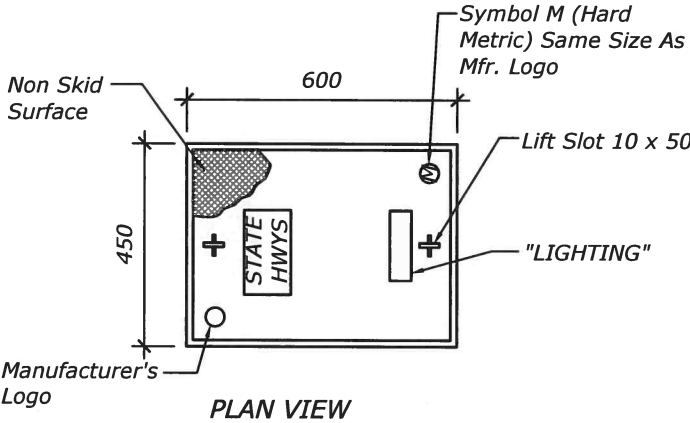
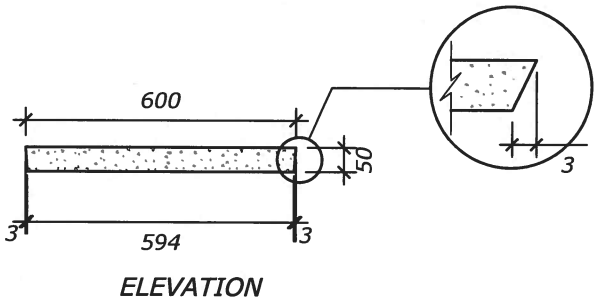
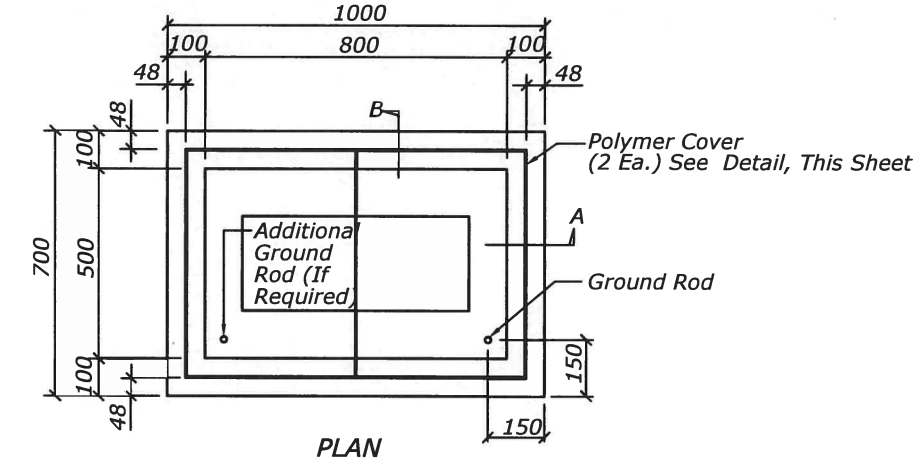
U.S. DEPARTMENT OF TRANSPORTATION
FEDERAL HIGHWAY ADMINISTRATION
CENTRAL FEDERAL LANDS HIGHWAY DIVISION

U.S. CUSTOMARY SPECIAL

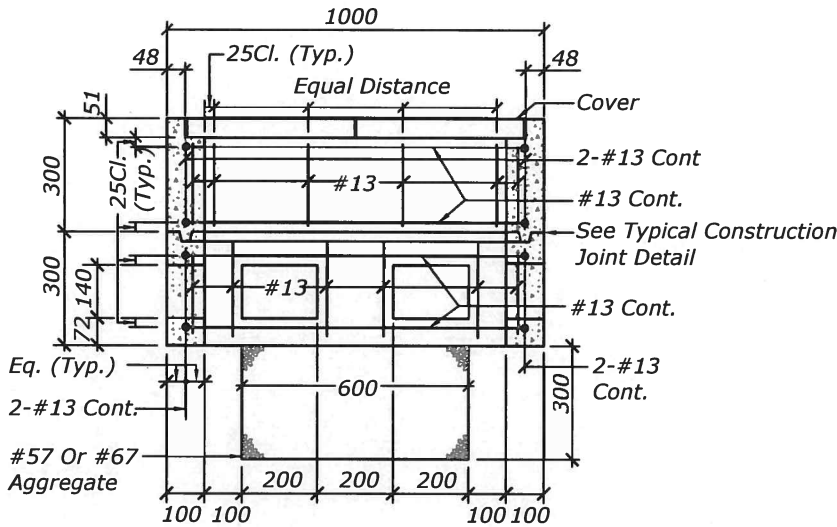
STREET LIGHT PULLBOX DETAILS

SPECIAL

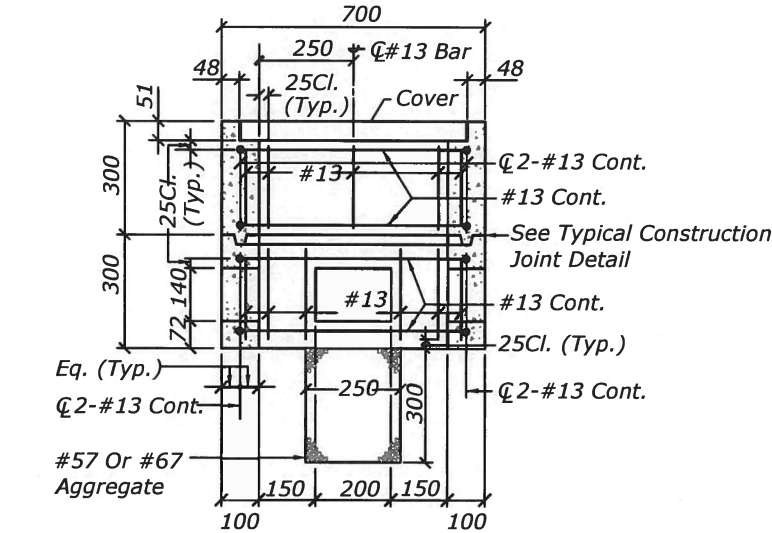
DRAWING NO.:
FINAL DESIGN



POLYMER CONCRETE COVER Not to Scale

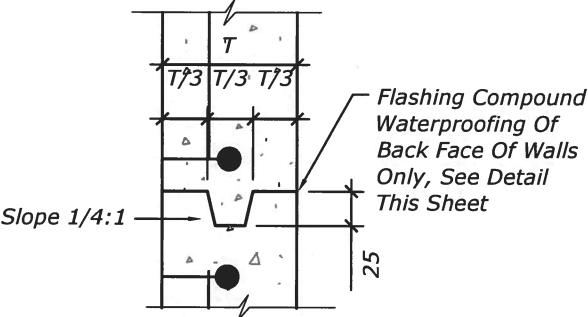


SECTION A-A

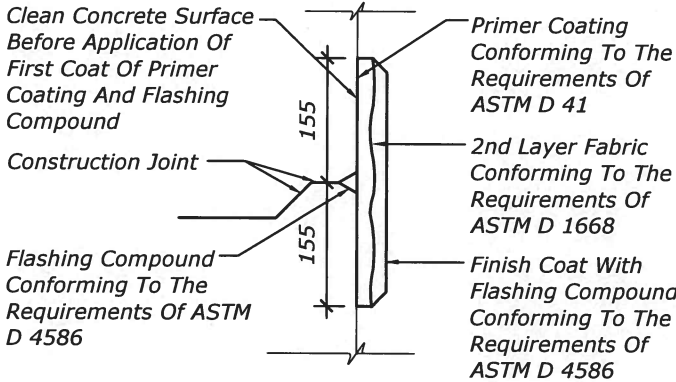


SECTION B-B

TYPE "B" PULLBOX Not to Scale

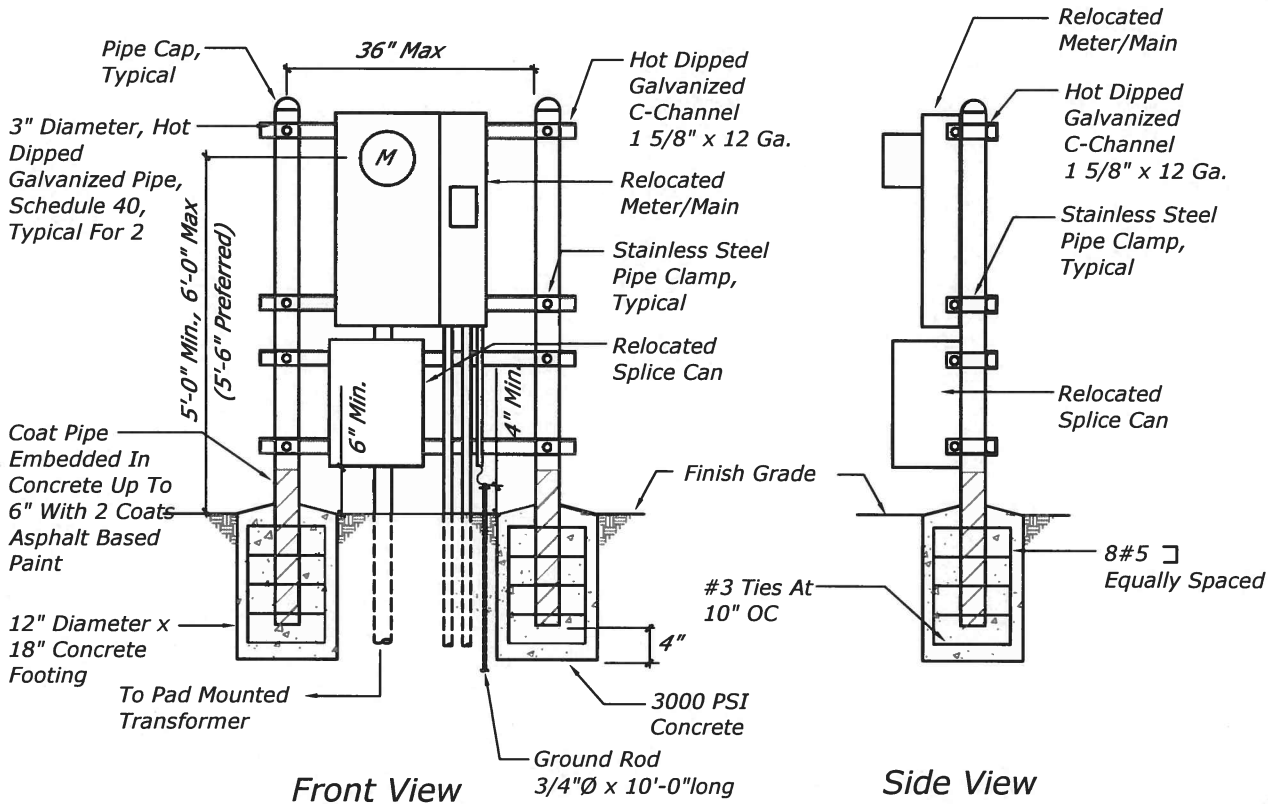


TYPICAL CONSTRUCTION JOINT DETAIL Not to Scale

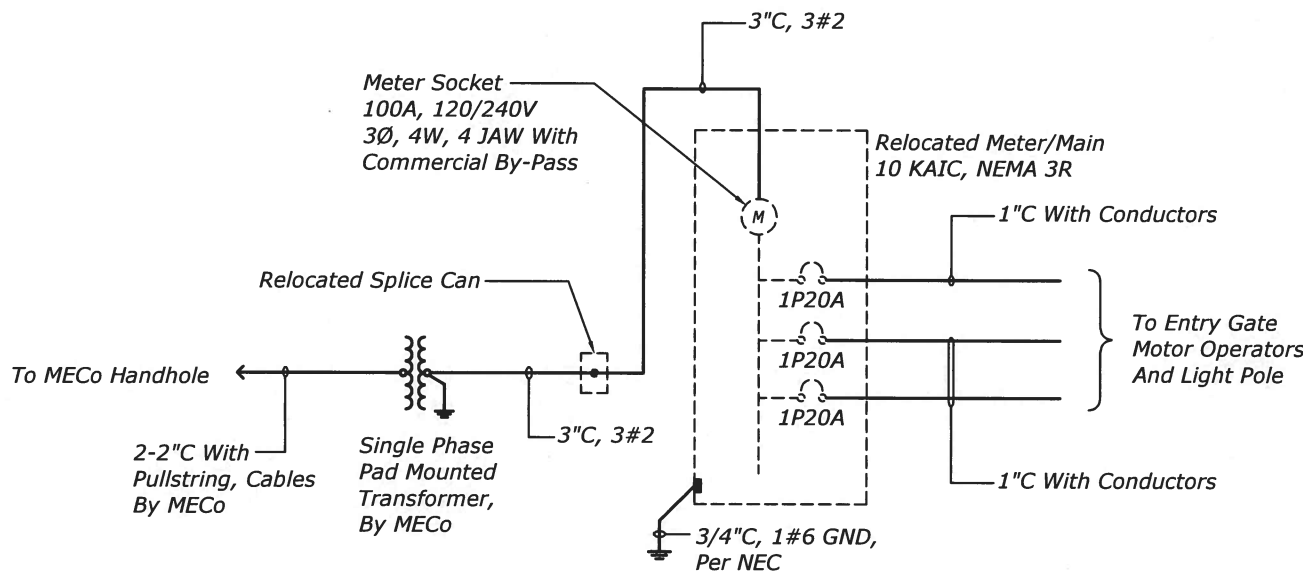


TYPICAL FLASHING COMPOUND WATERPROOFING DETAIL Not to Scale

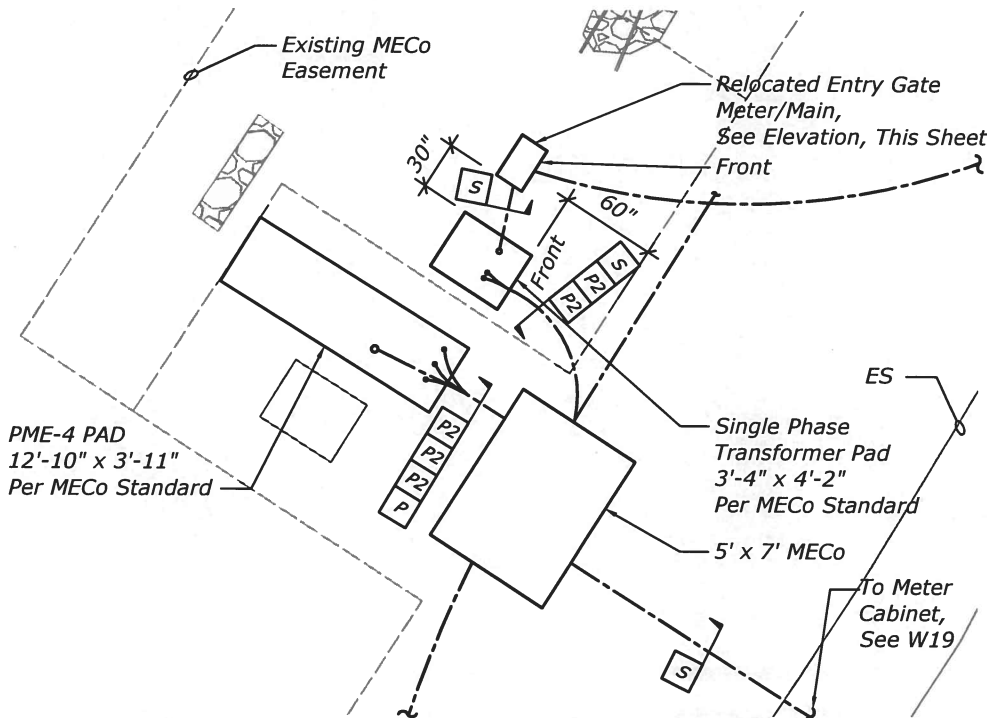
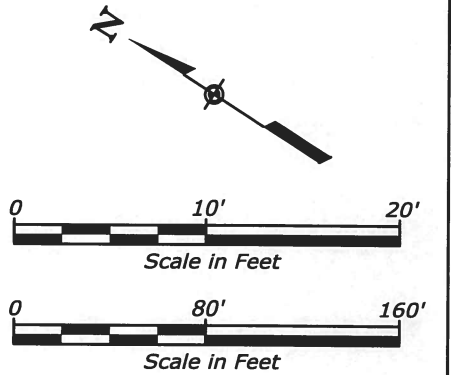
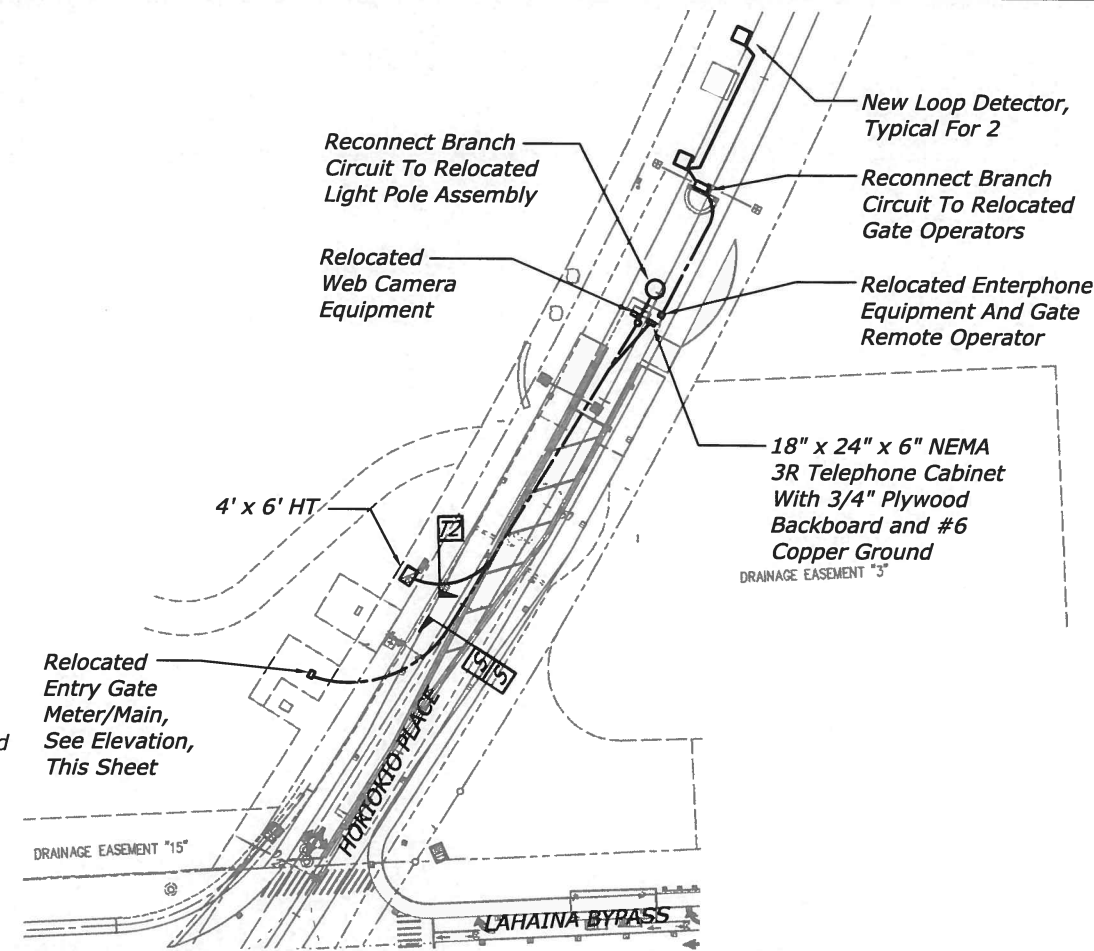
STATE	PROJECT	SHEET NO.
HI	HI STP SR 30(1)	W24



METER ELEVATION
Not to Scale



**SERVICE EQUIPMENT
DETAIL PLAN (FROM W9)**
Scale: 1" = 80'



THIS WORK WAS PREPARED BY ME OR UNDER MY SUPERVISION AND CONSTRUCTION OF THIS PROJECT WILL BE UNDER MY OBSERVATION. "OBSERVATION OF CONSTRUCTION" IS DEFINED IN CHAPTER 18-115, HAWAII ADMINISTRATIVE RULES ENTITLED "PROFESSIONAL ENGINEERS, ARCHITECTS, SURVEYORS AND LANDSCAPE ARCHITECTS".
APRIL 30, 2018
LIC. EXP. DATE

U.S. DEPARTMENT OF TRANSPORTATION
FEDERAL HIGHWAY ADMINISTRATION
CENTRAL FEDERAL LANDS HIGHWAY DIVISION

U.S. CUSTOMARY SPECIAL

**PUUNOA ENTRY GATE
ELECTRICAL DETAILS**

SPECIAL