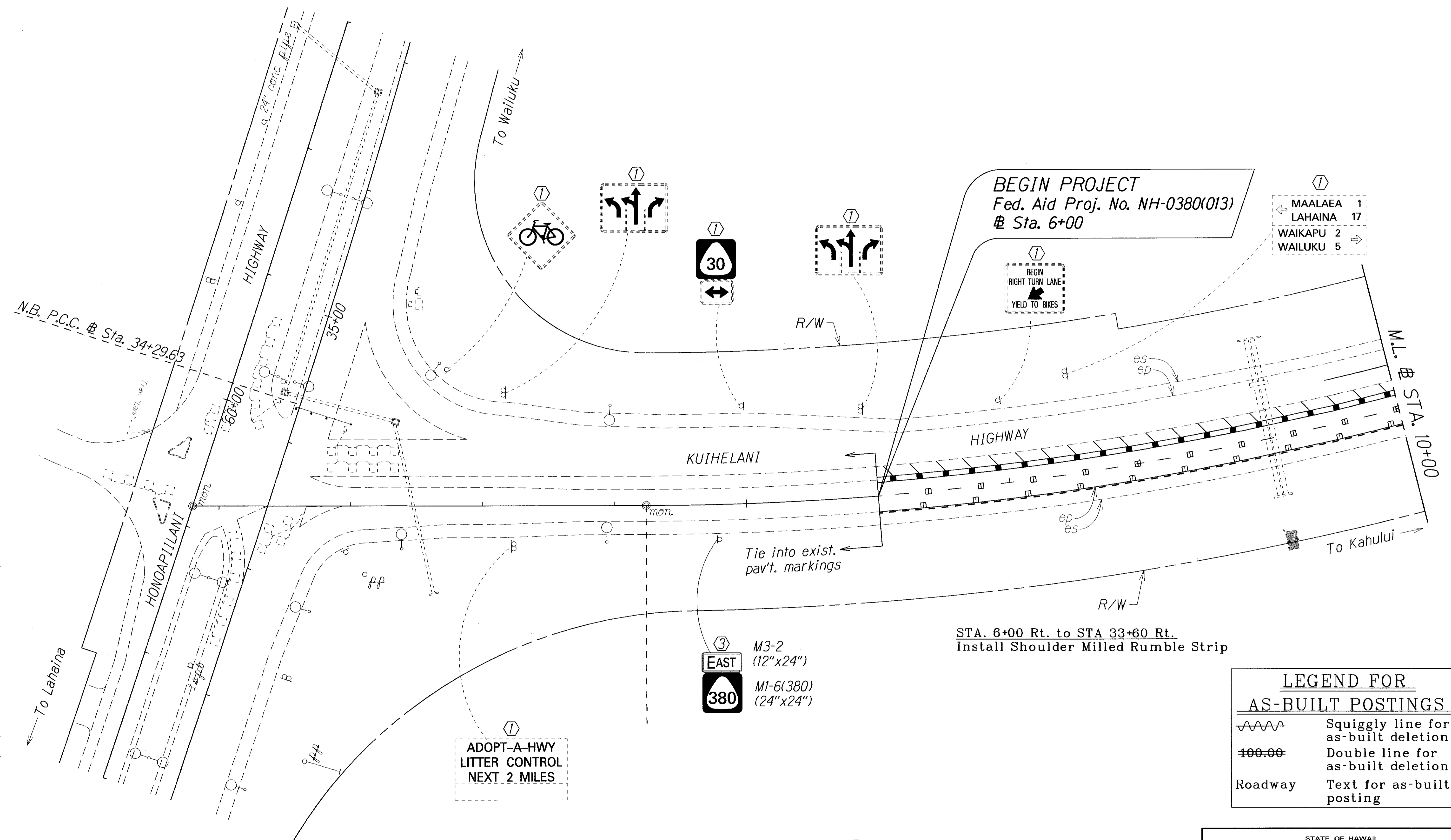


FED. ROAD DIST. NO.	STATE	FED. AID PROJ. NO.	FISCAL YEAR	SHEET NO.	TOTAL SHEETS
HAWAII	HAW.	NH-0380(013)	2015	31	44



SURVEY PLOTTED BY	DATE
DESIGNED BY	
TRACED BY	
DESIGNED BY	
QUANTITIES BY	
CHECKED BY	
ORIGINAL PLAN	
NOTE BOOK	
DATE	
N.	

- KEY:**
- ① Exist. Sign(s) & Post(s) to Remain
 - ② Remove Exist. Sign(s) & Post(s)
 - ③ Remove Exist. & Install New Sign(s) & Post(s)
 - ④ Install New Sign(s) & Post(s)
 - ⑤ Relocate Exist. Sign(s) & Post(s)
 - ⑥ Remove Exist. & Install New Sign(s) on Traffic Signal Post(s)

LEGEND FOR AS-BUILT POSTINGS

	Squiggly line for as-built deletion
	Double line for as-built deletion
Roadway	Text for as-built posting

STATE OF HAWAII
DEPARTMENT OF TRANSPORTATION
HIGHWAYS DIVISION

SIGNING & PAVEMENT MARKING PLANS

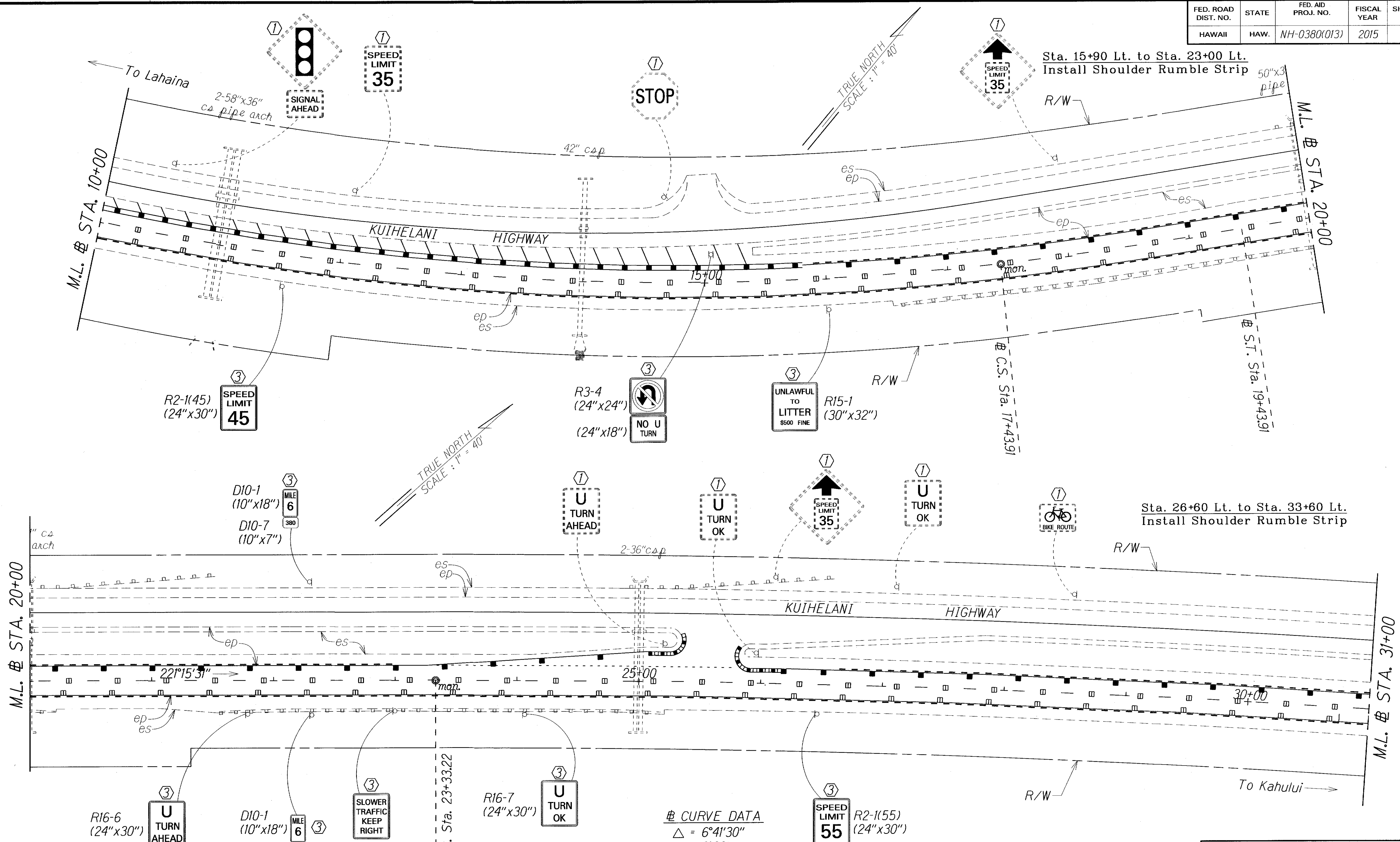
*KUIHELANI HIGHWAY RESURFACING
Honoapiilani Highway to Puunene Avenue
Federal-Aid Project No. NH-0380(013)*

Scale: 1" = 40' Date: January, 2015

SHEET No. 1 OF 14 SHEETS

"AS-BUILT"

FED. ROAD DIST. NO.	STATE	FED. AID PROJ. NO.	FISCAL YEAR	SHEET NO.	TOTAL SHEETS
HAWAII	HAW.	NH-0380(013)	2015	32	44



LEGEND FOR AS-BUILT POSTINGS	
	Squiggly line for as-built deletion
	Double line for as-built deletion
Roadway	Text for as-built posting

CURVE DATA
 $\Delta = 6^{\circ}41'30''$
 $D_c = 0^{\circ}30'$
 $R = 11,459.16$
 $T = 669.93$
 $L_c = 1,338.33$
 $S. E. = 0.015 \text{ ft/ft}$

- KEY:**
- ① Exist. Sign(s) & Post(s) to Remain
 - ② Remove Exist. Sign(s) & Post(s)
 - ③ Remove Exist. & Install New Sign(s) & Post(s)
 - ④ Install New Sign(s) & Post(s)
 - ⑤ Relocate Exist. Sign(s) & Post(s)
 - ⑥ Remove Exist. & Install New Sign(s) on Traffic Signal Post(s)

STATE OF HAWAII
DEPARTMENT OF TRANSPORTATION
HIGHWAYS DIVISION

SIGNING & PAVEMENT MARKING PLANS

KUIHELANI HIGHWAY RESURFACING
Honoapiilani Highway to Puunene Avenue
Federal-Aid Project No. NH-0380(013)

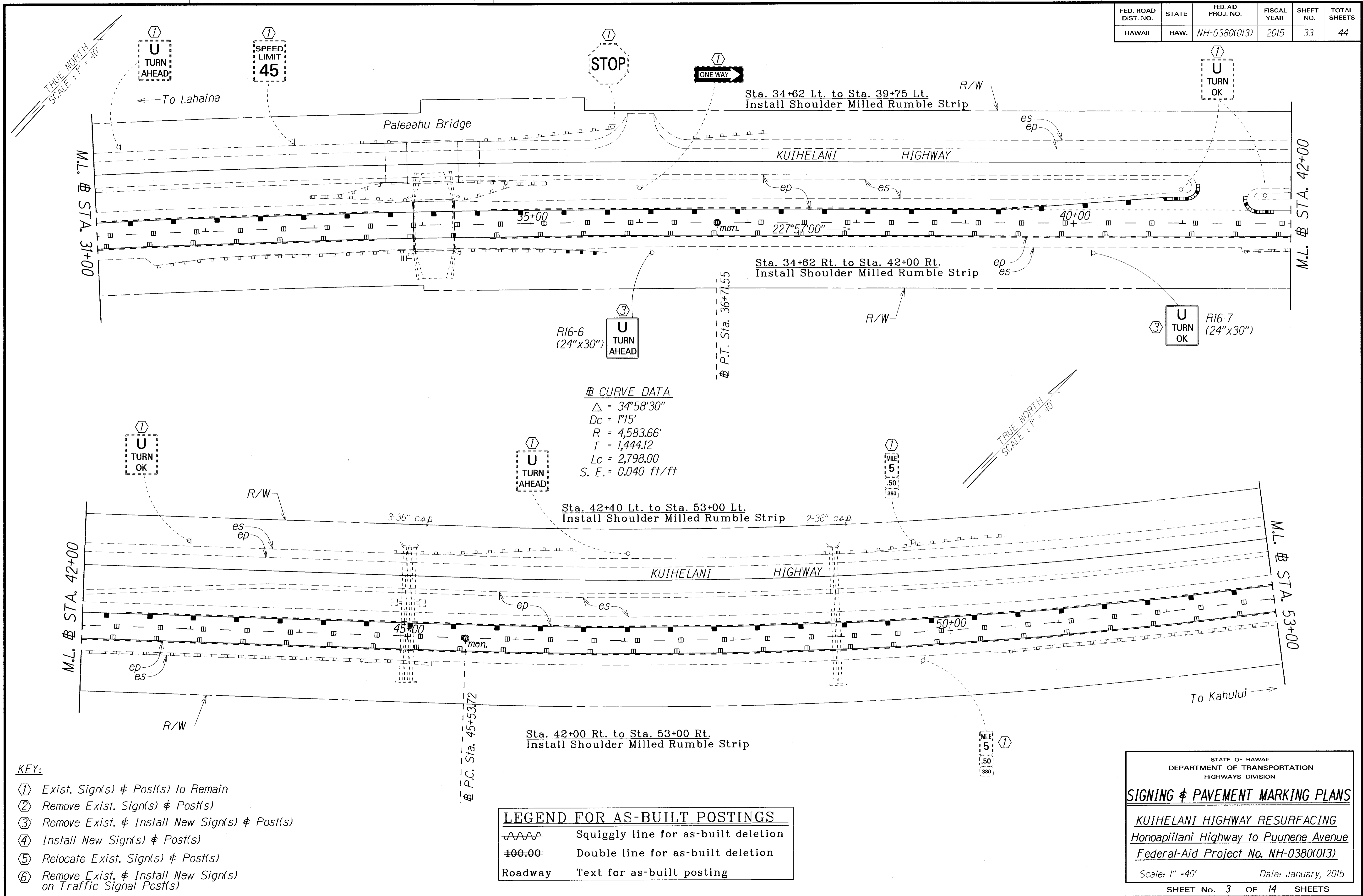
Scale: 1" = 40' Date: January, 2015

SHEET No. 2 OF 14 SHEETS

ORIGINAL PLAN	DATE
DRAWN BY	
TRACED BY	
NOTED BY	
CHECKED BY	
NO. _____	

"AS-BUILT"

FED. ROAD DIST. NO.	STATE	FED. AID PROJ. NO.	FISCAL YEAR	SHEET NO.	TOTAL SHEETS
HAWAII	HAW.	NH-0380(013)	2015	33	44



SURVEY PLOTTED BY	DATE
DRAWN BY	
TRACED BY	
DESIGNED BY	
NOTED BY	
CHECKED BY	
NO.	

- KEY:**
- ① Exist. Sign(s) & Post(s) to Remain
 - ② Remove Exist. Sign(s) & Post(s)
 - ③ Remove Exist. & Install New Sign(s) & Post(s)
 - ④ Install New Sign(s) & Post(s)
 - ⑤ Relocate Exist. Sign(s) & Post(s)
 - ⑥ Remove Exist. & Install New Sign(s) on Traffic Signal Post(s)

LEGEND FOR AS-BUILT POSTINGS

	Squiggly line for as-built deletion
	Double line for as-built deletion
Roadway	Text for as-built posting

STATE OF HAWAII
DEPARTMENT OF TRANSPORTATION
HIGHWAYS DIVISION

SIGNING & PAVEMENT MARKING PLANS

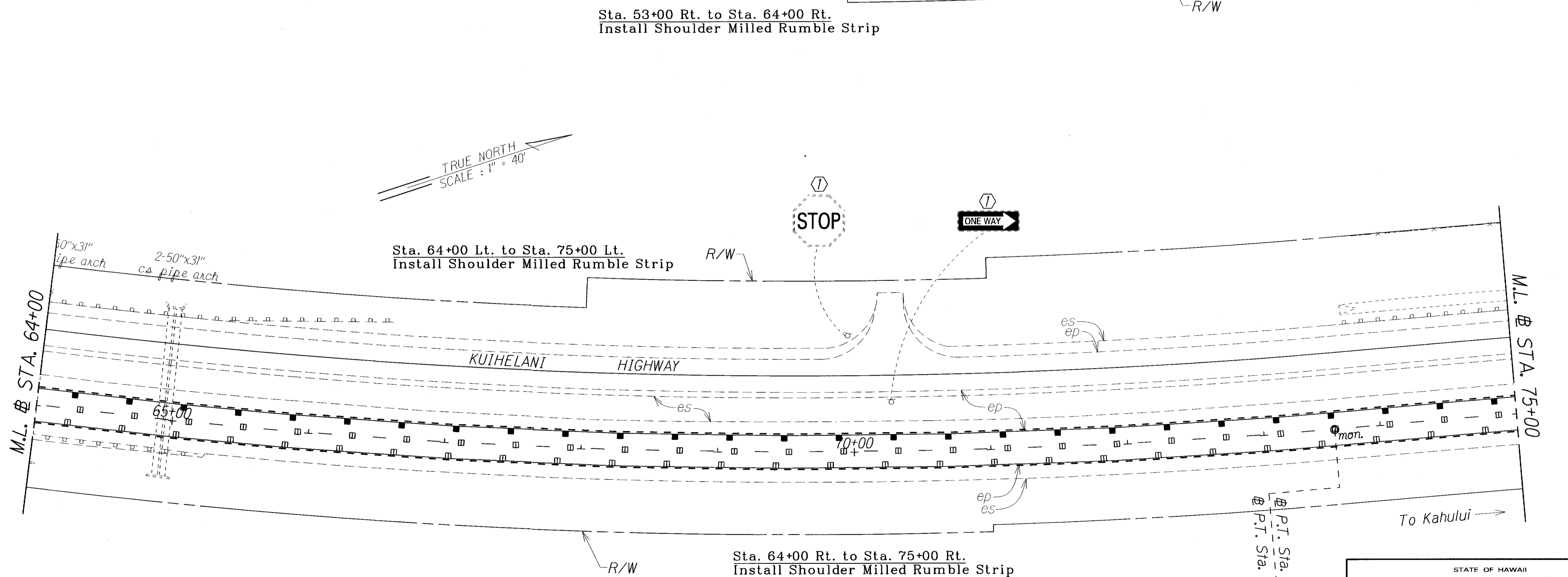
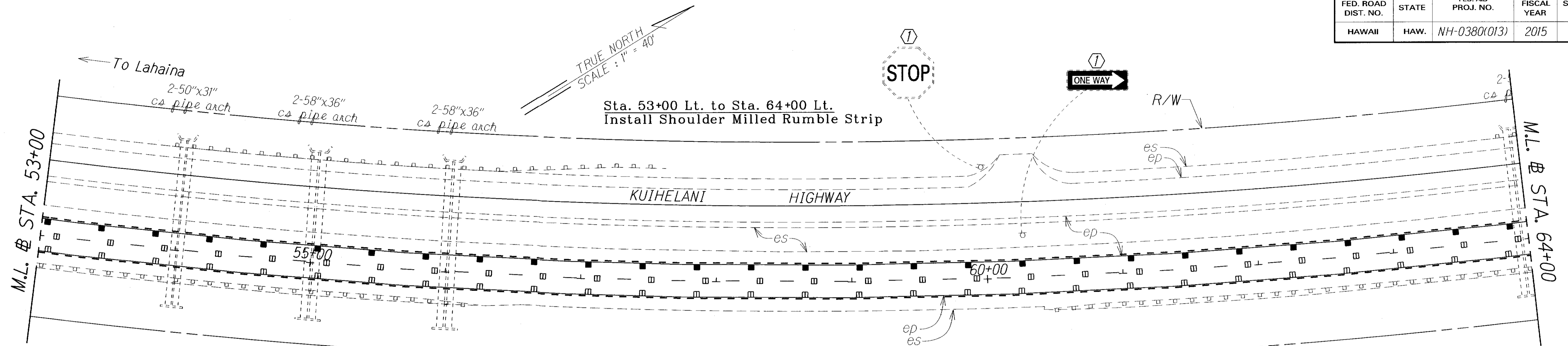
KUIHELANI HIGHWAY RESURFACING
Honoapiilani Highway to Puunene Avenue
Federal-Aid Project No. NH-0380(013)

Scale: 1" = 40' Date: January, 2015

SHEET No. 3 OF 14 SHEETS

"AS-BUILT"

FED. ROAD DIST. NO.	STATE	FED. AID PROJ. NO.	FISCAL YEAR	SHEET NO.	TOTAL SHEETS
HAWAII	HAW.	NH-0380(013)	2015	34	44



KEY:

- ① Exist. Sign(s) & Post(s) to Remain
- ② Remove Exist. Sign(s) & Post(s)
- ③ Remove Exist. & Install New Sign(s) & Post(s)
- ④ Install New Sign(s) & Post(s)
- ⑤ Relocate Exist. Sign(s) & Post(s)
- ⑥ Remove Exist. & Install New Sign(s) on Traffic Signal Post(s)

LEGEND FOR AS-BUILT POSTINGS	
	Squiggly line for as-built deletion
	Double line for as-built deletion
Roadway	Text for as-built posting

SURVEY PLOTTED BY	DATE
DRAWN BY	
CHECKED BY	
NOTE BOOK	
QUANTITIES BY	
CHECKED BY	
NO.	

P.T. Sta. 73+66.51 (AH)
 P.T. Sta. 73+51.72 (BK) = EQ.

STATE OF HAWAII
 DEPARTMENT OF TRANSPORTATION
 HIGHWAYS DIVISION

SIGNING & PAVEMENT MARKING PLANS

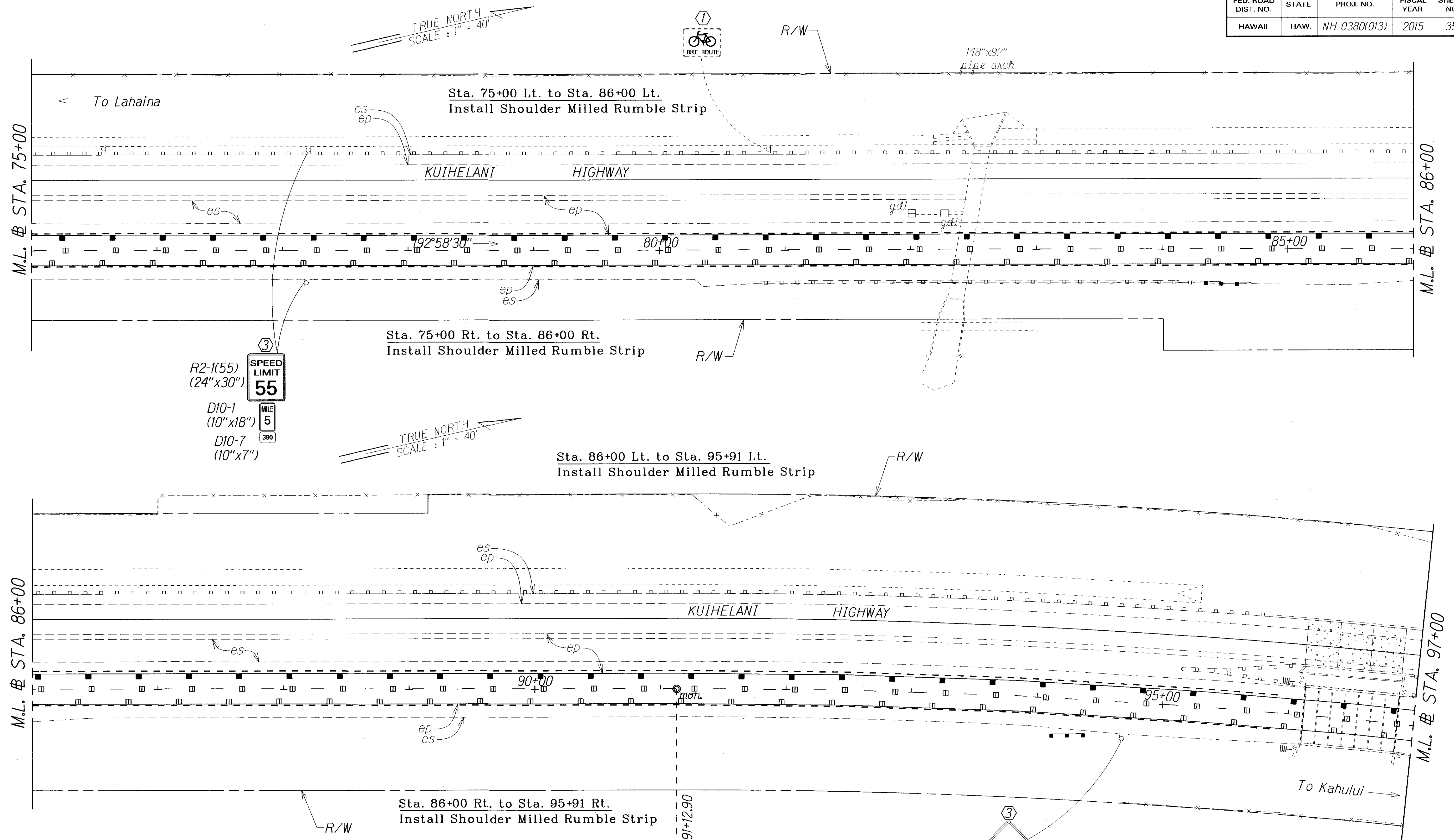
KUIHELANI HIGHWAY RESURFACING
Honoapiilani Highway to Puunene Avenue
 Federal-Aid Project No. NH-0380(013)

Scale: 1" = 40' Date: January, 2015

SHEET No. 4 OF 14 SHEETS

"AS-BUILT"

FED. ROAD DIST. NO.	STATE	FED. AID PROJ. NO.	FISCAL YEAR	SHEET NO.	TOTAL SHEETS
HAWAII	HAW.	NH-0380(013)	2015	35	44



- KEY:**
- ① Exist. Sign(s) & Post(s) to Remain
 - ② Remove Exist. Sign(s) & Post(s)
 - ③ Remove Exist. & Install New Sign(s) & Post(s)
 - ④ Install New Sign(s) & Post(s)
 - ⑤ Relocate Exist. Sign(s) & Post(s)
 - ⑥ Remove Exist. & Install New Sign(s) on Traffic Signal Post(s)

CURVE DATA
 $\Delta = 14^{\circ}50'00''$
 $D_c = 1^{\circ}00'$
 $R = 5,729.58$
 $T = 745.84$
 $L_c = 1,483.33$
 $S. E. = 0.032 \text{ ft/ft}$

LEGEND FOR AS-BUILT POSTINGS

	Squiggly line for as-built deletion
	Double line for as-built deletion
Roadway	Text for as-built posting

SURVEY PLOTTED BY	DATE
DRAWN BY	
TRACED BY	
DESIGNED BY	
CHECKED BY	
ORIGINAL PLAN	
NOTE BOOK	
N.	

STATE OF HAWAII
DEPARTMENT OF TRANSPORTATION
HIGHWAYS DIVISION

SIGNING & PAVEMENT MARKING PLANS

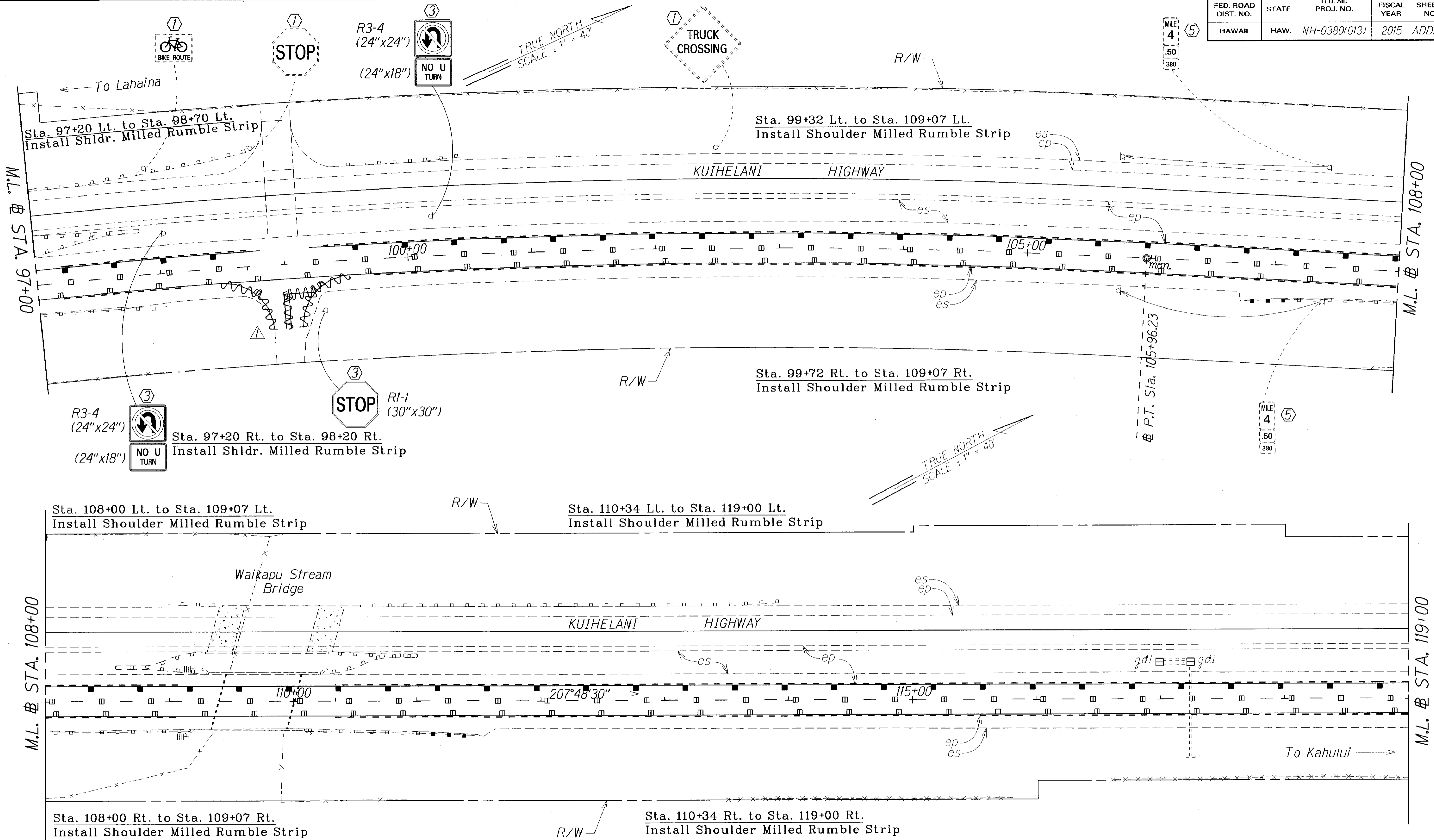
*KUIHELANI HIGHWAY RESURFACING
Honoapiilani Highway to Puunene Avenue
Federal-Aid Project No. NH-0380(013)*

Scale: 1" = 40' Date: January, 2015

SHEET No. 5 OF 14 SHEETS

"AS-BUILT"

FED. ROAD DIST. NO.	STATE	FED. AID PROJ. NO.	FISCAL YEAR	SHEET NO.	TOTAL SHEETS
HAWAII	HAW.	NH-0380(013)	2015	ADD.36	44



SURVEY PLOTTED BY	DATE
DRAWN BY	
TRACED BY	
NOTE BOOK	
QUANTITIES BY	
CHECKED BY	
N.	

LEGEND FOR AS-BUILT POSTINGS	
	Squiggly line for as-built deletion
	Double line for as-built deletion
Roadway	Text for as-built posting

	5-29-15	Signage and Striping for side road.
DATE		REVISION

- KEY:**
- ① Exist. Sign(s) & Post(s) to Remain
 - ② Remove Exist. Sign(s) & Post(s)
 - ③ Remove Exist. & Install New Sign(s) & Post(s)
 - ④ Install New Sign(s) & Post(s)
 - ⑤ Relocate Exist. Sign(s) & Post(s)
 - ⑥ Remove Exist. & Install New Sign(s) on Traffic Signal Post(s)

STATE OF HAWAII
DEPARTMENT OF TRANSPORTATION
HIGHWAYS DIVISION

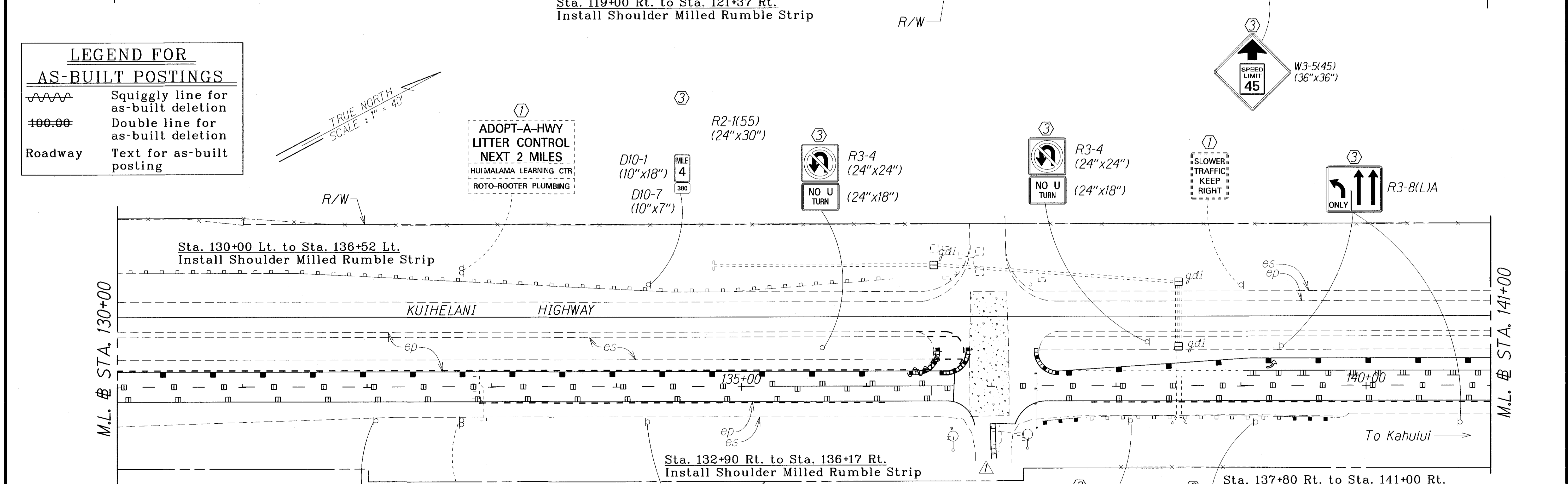
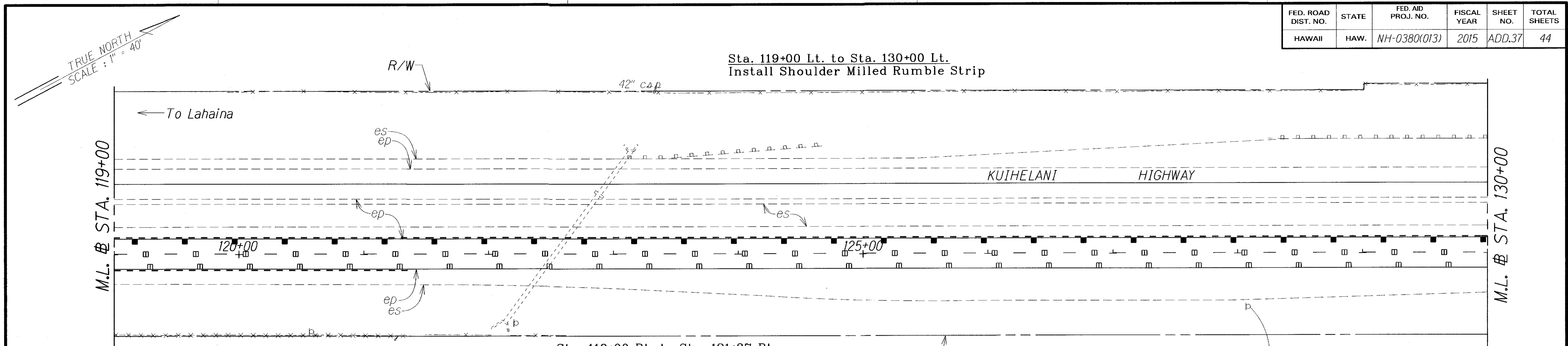
SIGNING & PAVEMENT MARKING PLANS

KUIHELANI HIGHWAY RESURFACING
Honoapiilani Highway to Puunene Avenue
Federal-Aid Project No. NH-0380(013)

Scale: 1" = 40' Date: January, 2015

SHEET No. 6 OF 14 SHEETS

FED. ROAD DIST. NO.	STATE	FED. AID PROJ. NO.	FISCAL YEAR	SHEET NO.	TOTAL SHEETS
HAWAII	HAW.	NH-0380(013)	2015	ADD.37	44



LEGEND FOR AS-BUILT POSTINGS

	Squiggly line for as-built deletion
	Double line for as-built deletion
Roadway	Text for as-built posting

- KEY:**
- ① Exist. Sign(s) & Post(s) to Remain
 - ② Remove Exist. Sign(s) & Post(s)
 - ③ Remove Exist. & Install New Sign(s) & Post(s)
 - ④ Install New Sign(s) & Post(s)
 - ⑤ Relocate Exist. Sign(s) & Post(s)
 - ⑥ Remove Exist. & Install New Sign(s) on Traffic Signal Post(s)

ADOPT-A-HWY
LITTER CONTROL
NEXT 2 MILES
HUI MALAMA LEARNING CTR
ROTO-ROOTER PLUMBING

ADOPT-A-HWY
LITTER CONTROL
NEXT 2 MILES
HUI MALAMA LEARNING CTR
ROTO-ROOTER PLUMBING

DATE	
SURVEY PLOTTED BY	
DRAWN BY	
TRACED BY	
DESIGNED BY	
NOTED BY	
CHECKED BY	
NO.	

5-29-15 Striping for side road.

DATE REVISION

STATE OF HAWAII
DEPARTMENT OF TRANSPORTATION
HIGHWAYS DIVISION

SIGNING & PAVEMENT MARKING PLANS

KUIHELANI HIGHWAY RESURFACING
Honoapiilani Highway to Puunene Avenue
Federal-Aid Project No. NH-0380(013)

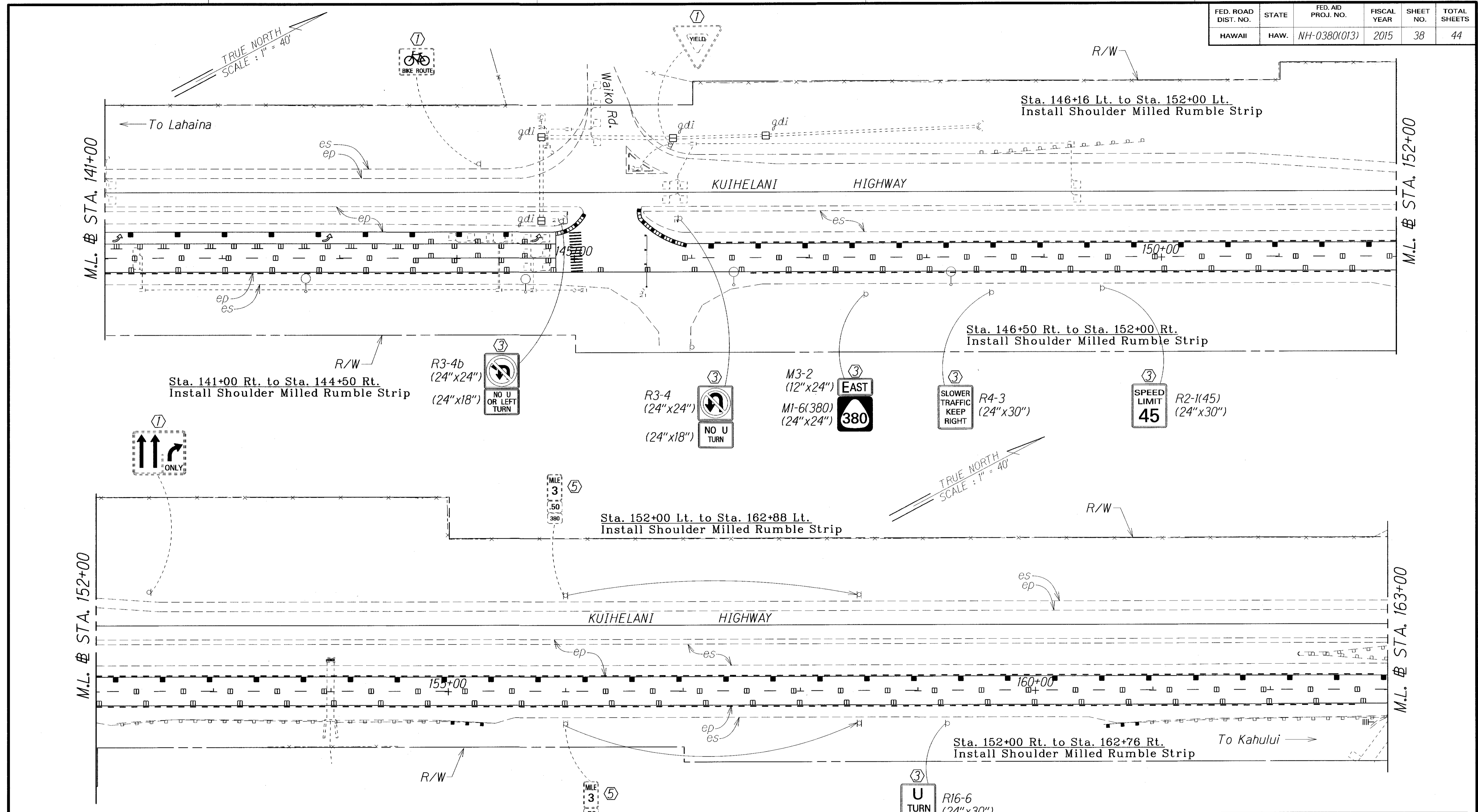
Scale: 1" = 40' Date: January, 2015

SHEET No. 7 OF 14 SHEETS

"AS-BUILT"

ADD. 37

FED. ROAD DIST. NO.	STATE	FED. AID PROJ. NO.	FISCAL YEAR	SHEET NO.	TOTAL SHEETS
HAWAII	HAW.	NH-0380(013)	2015	38	44



SURVEY PLOTTED BY	DATE
DRAWN BY	
TRACED BY	
DESIGNED BY	
QUANTITIES BY	
CHECKED BY	
ORIGINAL PLAN	
NOTE BOOK	
N.	

- KEY:**
- ① Exist. Sign(s) & Post(s) to Remain
 - ② Remove Exist. Sign(s) & Post(s)
 - ③ Remove Exist. & Install New Sign(s) & Post(s)
 - ④ Install New Sign(s) & Post(s)
 - ⑤ Relocate Exist. Sign(s) & Post(s)
 - ⑥ Remove Exist. & Install New Sign(s) on Traffic Signal Post(s)

LEGEND FOR AS-BUILT POSTINGS

	Squiggly line for as-built deletion
	Double line for as-built deletion
Roadway	Text for as-built posting

STATE OF HAWAII
DEPARTMENT OF TRANSPORTATION
HIGHWAYS DIVISION

SIGNING & PAVEMENT MARKING PLANS

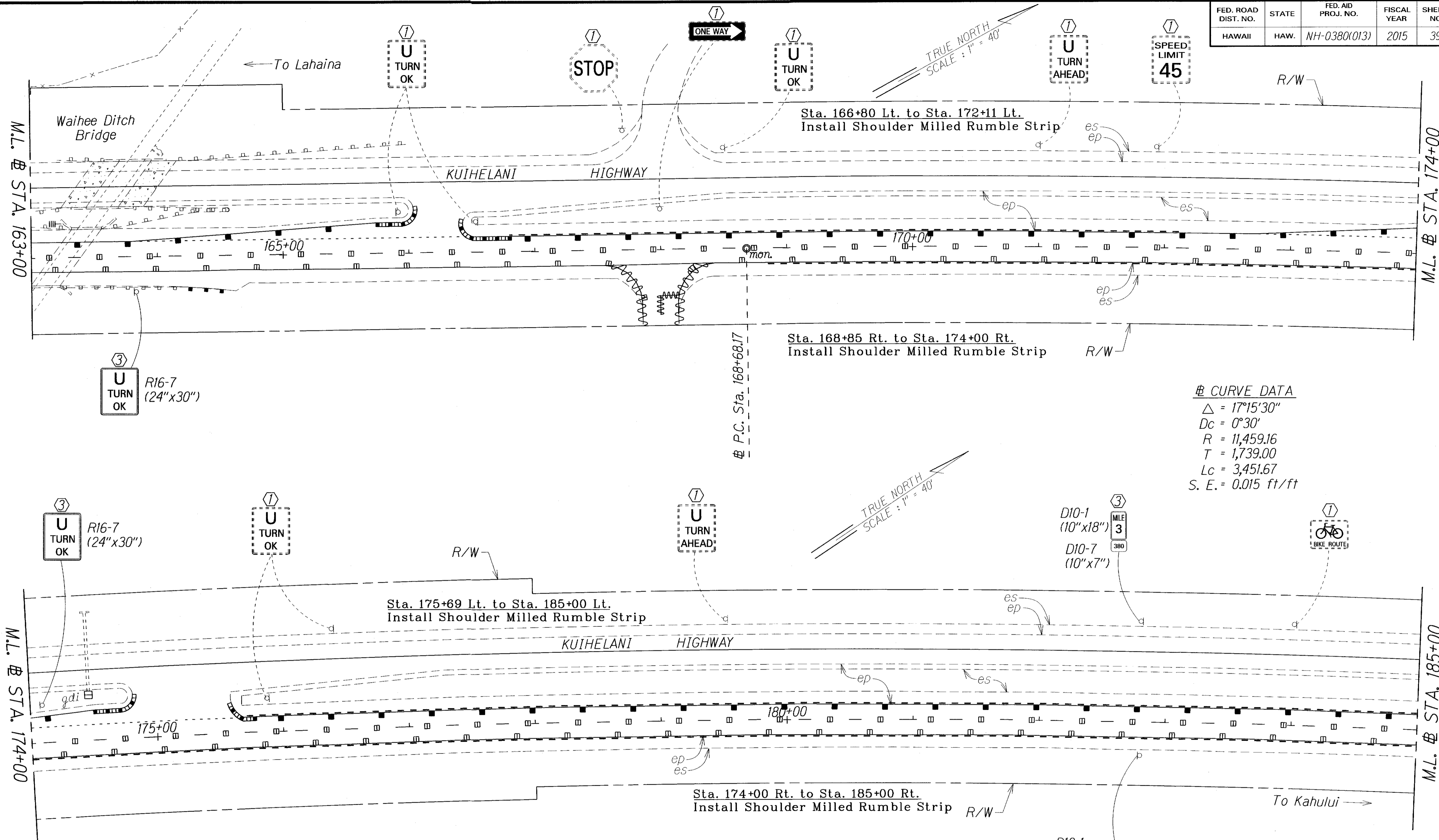
*KUIHELANI HIGHWAY RESURFACING
Honoapiilani Highway to Puunene Avenue
Federal-Aid Project No. NH-0380(013)*

Scale: 1" = 40' Date: January, 2015

SHEET No. 8 OF 14 SHEETS

"AS-BUILT"

FED. ROAD DIST. NO.	STATE	FED. AID PROJ. NO.	FISCAL YEAR	SHEET NO.	TOTAL SHEETS
HAWAII	HAW.	NH-0380(013)	2015	39	44



- KEY:**
- ① Exist. Sign(s) & Post(s) to Remain
 - ② Remove Exist. Sign(s) & Post(s)
 - ③ Remove Exist. & Install New Sign(s) & Post(s)
 - ④ Install New Sign(s) & Post(s)
 - ⑤ Relocate Exist. Sign(s) & Post(s)
 - ⑥ Remove Exist. & Install New Sign(s) on Traffic Signal Post(s)

LEGEND FOR AS-BUILT POSTINGS

	Squiggly line for as-built deletion
	Double line for as-built deletion
Roadway	Text for as-built posting

STATE OF HAWAII
DEPARTMENT OF TRANSPORTATION
HIGHWAYS DIVISION

SIGNING & PAVEMENT MARKING PLANS

KUIHELANI HIGHWAY RESURFACING
Honoapiilani Highway to Puunene Avenue
Federal-Aid Project No. NH-0380(013)

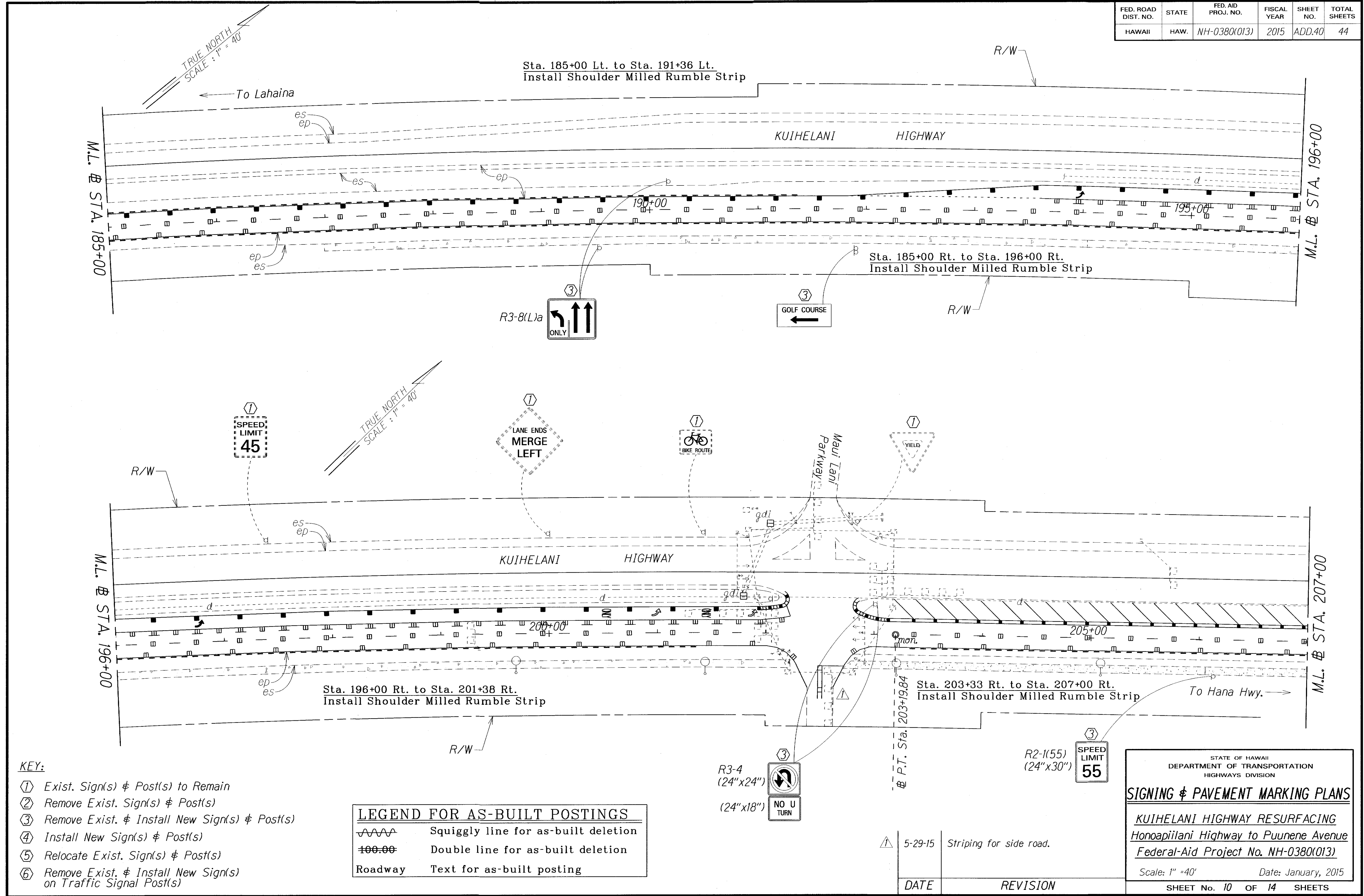
Scale: 1" = 40' Date: January, 2015

SHEET No. 9 OF 14 SHEETS

SURVEY PLOTTED BY	DATE
DRAWN BY	
TRACED BY	
NOTED BY	
CHECKED BY	
ORIGINAL PLAN	
NOTE BOOK	

"AS-BUILT"

FED. ROAD DIST. NO.	STATE	FED. AID PROJ. NO.	FISCAL YEAR	SHEET NO.	TOTAL SHEETS
HAWAII	HAW.	NH-0380(013)	2015	ADD.40	44



SURVEY PLOTTED BY	DATE
DRAWN BY	
TRACED BY	
QUANTITIES BY	
CHECKED BY	
ORIGINAL PLAN	
NOTE BOOK	
NO.	

- KEY:**
- ① Exist. Sign(s) & Post(s) to Remain
 - ② Remove Exist. Sign(s) & Post(s)
 - ③ Remove Exist. & Install New Sign(s) & Post(s)
 - ④ Install New Sign(s) & Post(s)
 - ⑤ Relocate Exist. Sign(s) & Post(s)
 - ⑥ Remove Exist. & Install New Sign(s) on Traffic Signal Post(s)

LEGEND FOR AS-BUILT POSTINGS	
	Squiggly line for as-built deletion
	Double line for as-built deletion
Roadway	Text for as-built posting

▲ 5-29-15 Striping for side road.

DATE	REVISION
------	----------

STATE OF HAWAII
DEPARTMENT OF TRANSPORTATION
HIGHWAYS DIVISION

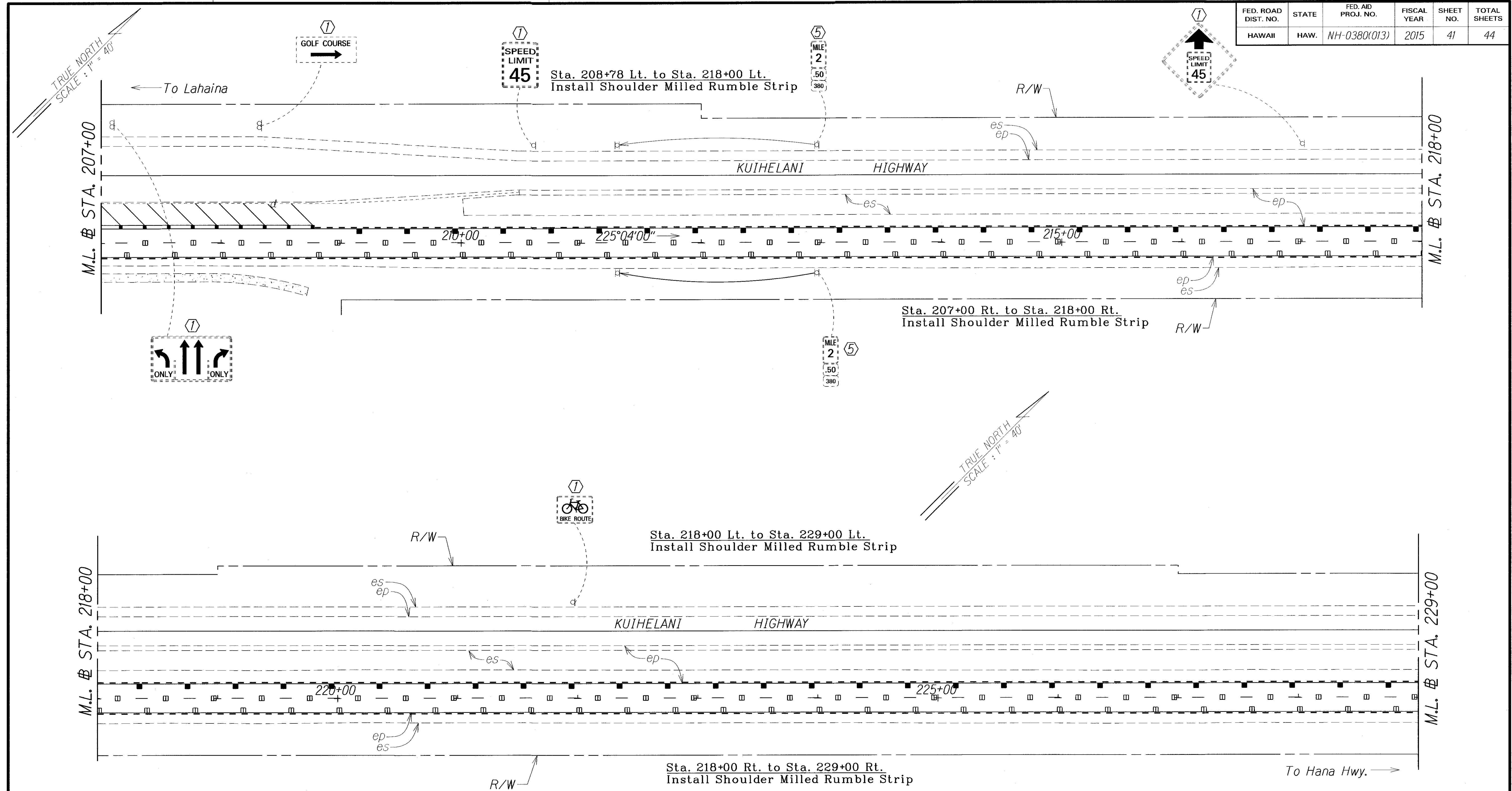
SIGNING & PAVEMENT MARKING PLANS

*KUIHELANI HIGHWAY RESURFACING
Honoapiilani Highway to Puunene Avenue
Federal-Aid Project No. NH-0380(013)*

Scale: 1" = 40' Date: January, 2015

SHEET No. 10 OF 14 SHEETS

FED. ROAD DIST. NO.	STATE	FED. AID PROJ. NO.	FISCAL YEAR	SHEET NO.	TOTAL SHEETS
HAWAII	HAW.	NH-0380(013)	2015	41	44



SURVEY PLOTTED BY	DATE
DRAWN BY	
TRACED BY	
QUANTITIES BY	
CHECKED BY	
ORIGINAL PLAN	
NOTE BOOK	
N.	

- KEY:**
- ① Exist. Sign(s) & Post(s) to Remain
 - ② Remove Exist. Sign(s) & Post(s)
 - ③ Remove Exist. & Install New Sign(s) & Post(s)
 - ④ Install New Sign(s) & Post(s)
 - ⑤ Relocate Exist. Sign(s) & Post(s)
 - ⑥ Remove Exist. & Install New Sign(s) on Traffic Signal Post(s)

LEGEND FOR AS-BUILT POSTINGS

	Squiggly line for as-built deletion
	Double line for as-built deletion
Roadway	Text for as-built posting

STATE OF HAWAII
DEPARTMENT OF TRANSPORTATION
HIGHWAYS DIVISION

SIGNING & PAVEMENT MARKING PLANS

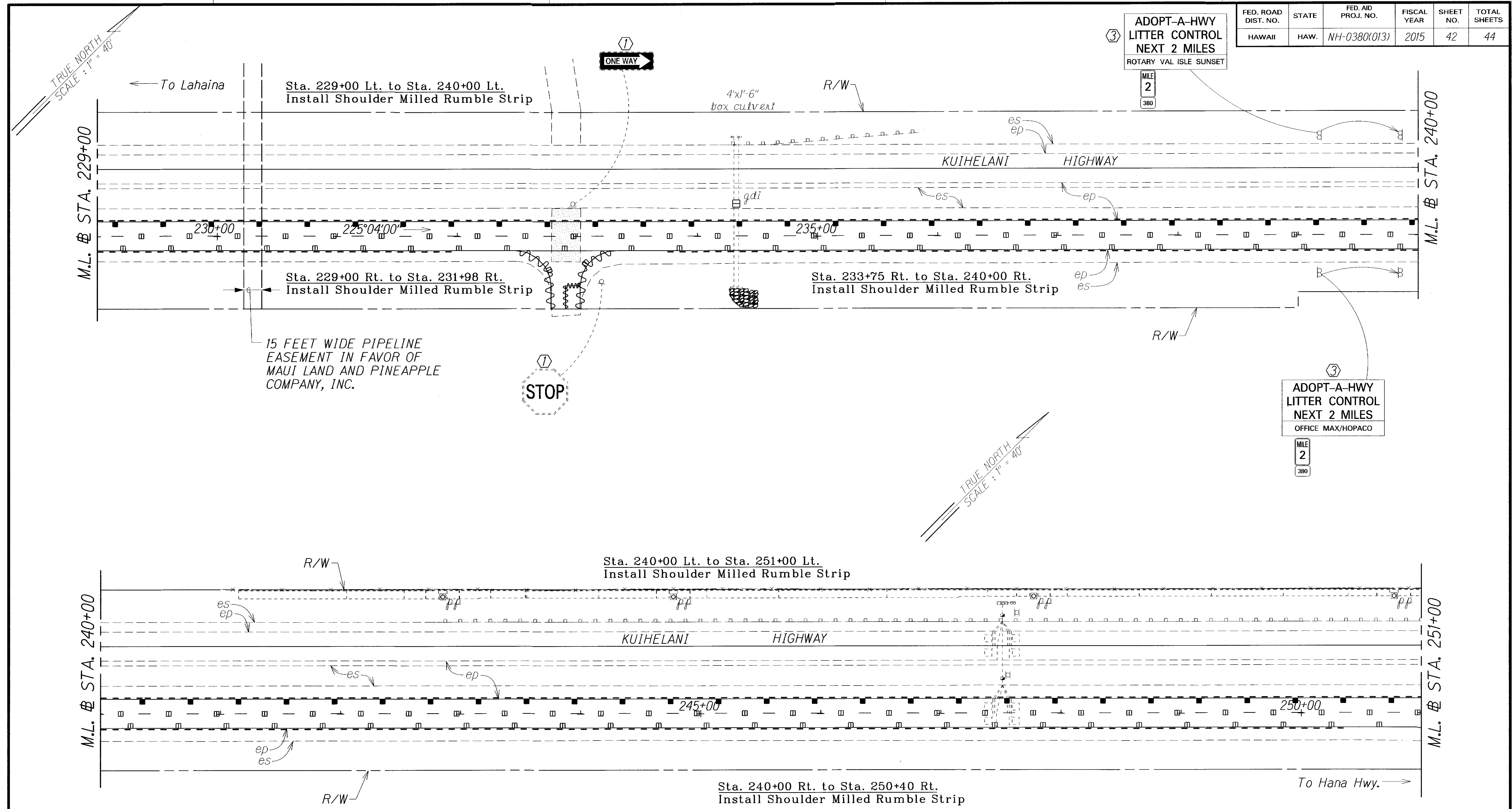
KUIHELANI HIGHWAY RESURFACING
Honoapiilani Highway to Puunene Avenue
Federal-Aid Project No. NH-0380(013)

Scale: 1" = 40' Date: January, 2015

SHEET No. 11 OF 14 SHEETS

"AS-BUILT"

FED. ROAD DIST. NO.	STATE	FED. AID PROJ. NO.	FISCAL YEAR	SHEET NO.	TOTAL SHEETS
HAWAII	HAW.	NH-0380(013)	2015	42	44



SURVEY PLOTTED BY	DATE
DRAWN BY	
TRACED BY	
QUANTITIES BY	
CHECKED BY	
ORIGINAL PLAN	
NOTE BOOK	
N.	

- KEY:**
- ① Exist. Sign(s) & Post(s) to Remain
 - ② Remove Exist. Sign(s) & Post(s)
 - ③ Remove Exist. & Install New Sign(s) & Post(s)
 - ④ Install New Sign(s) & Post(s)
 - ⑤ Relocate Exist. Sign(s) & Post(s)
 - ⑥ Remove Exist. & Install New Sign(s) on Traffic Signal Post(s)

LEGEND FOR AS-BUILT POSTINGS

	Squiggly line for as-built deletion
	Double line for as-built deletion
Roadway	Text for as-built posting

STATE OF HAWAII
DEPARTMENT OF TRANSPORTATION
HIGHWAYS DIVISION

SIGNING & PAVEMENT MARKING PLANS

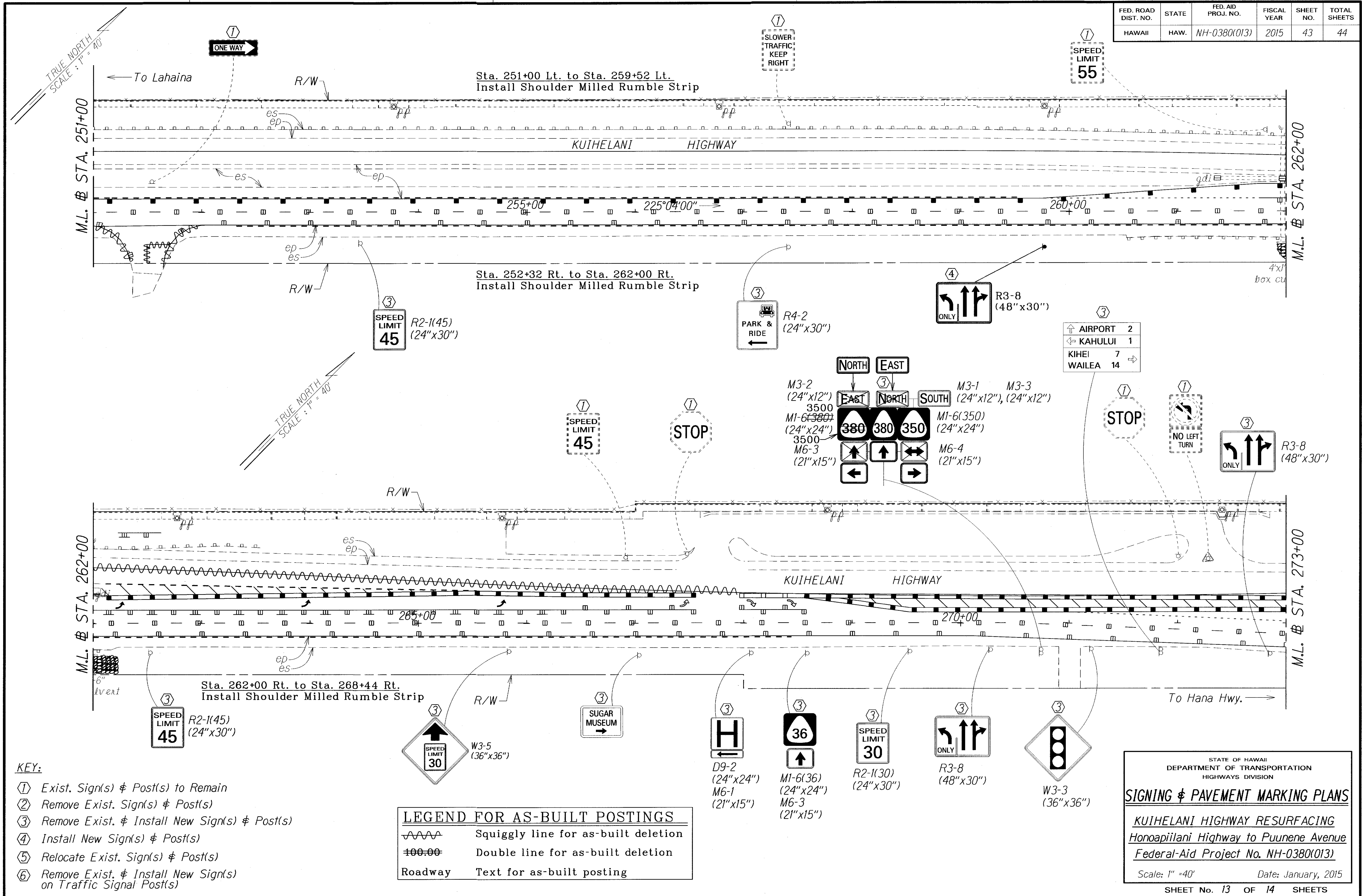
KUIHELANI HIGHWAY RESURFACING
Honoapiilani Highway to Puunene Avenue
Federal-Aid Project No. NH-0380(013)

Scale: 1" = 40' Date: January, 2015

SHEET No. 12 OF 14 SHEETS

"AS-BUILT"

FED. ROAD DIST. NO.	STATE	FED. AID PROJ. NO.	FISCAL YEAR	SHEET NO.	TOTAL SHEETS
HAWAII	HAW.	NH-0380(013)	2015	43	44



- KEY:**
- ① Exist. Sign(s) & Post(s) to Remain
 - ② Remove Exist. Sign(s) & Post(s)
 - ③ Remove Exist. & Install New Sign(s) & Post(s)
 - ④ Install New Sign(s) & Post(s)
 - ⑤ Relocate Exist. Sign(s) & Post(s)
 - ⑥ Remove Exist. & Install New Sign(s) on Traffic Signal Post(s)

LEGEND FOR AS-BUILT POSTINGS

	Squiggly line for as-built deletion
	Double line for as-built deletion
Roadway	Text for as-built posting

STATE OF HAWAII
DEPARTMENT OF TRANSPORTATION
HIGHWAYS DIVISION

SIGNING & PAVEMENT MARKING PLANS

*KUIHELANI HIGHWAY RESURFACING
Honoapiilani Highway to Puunene Avenue
Federal-Aid Project No. NH-0380(013)*

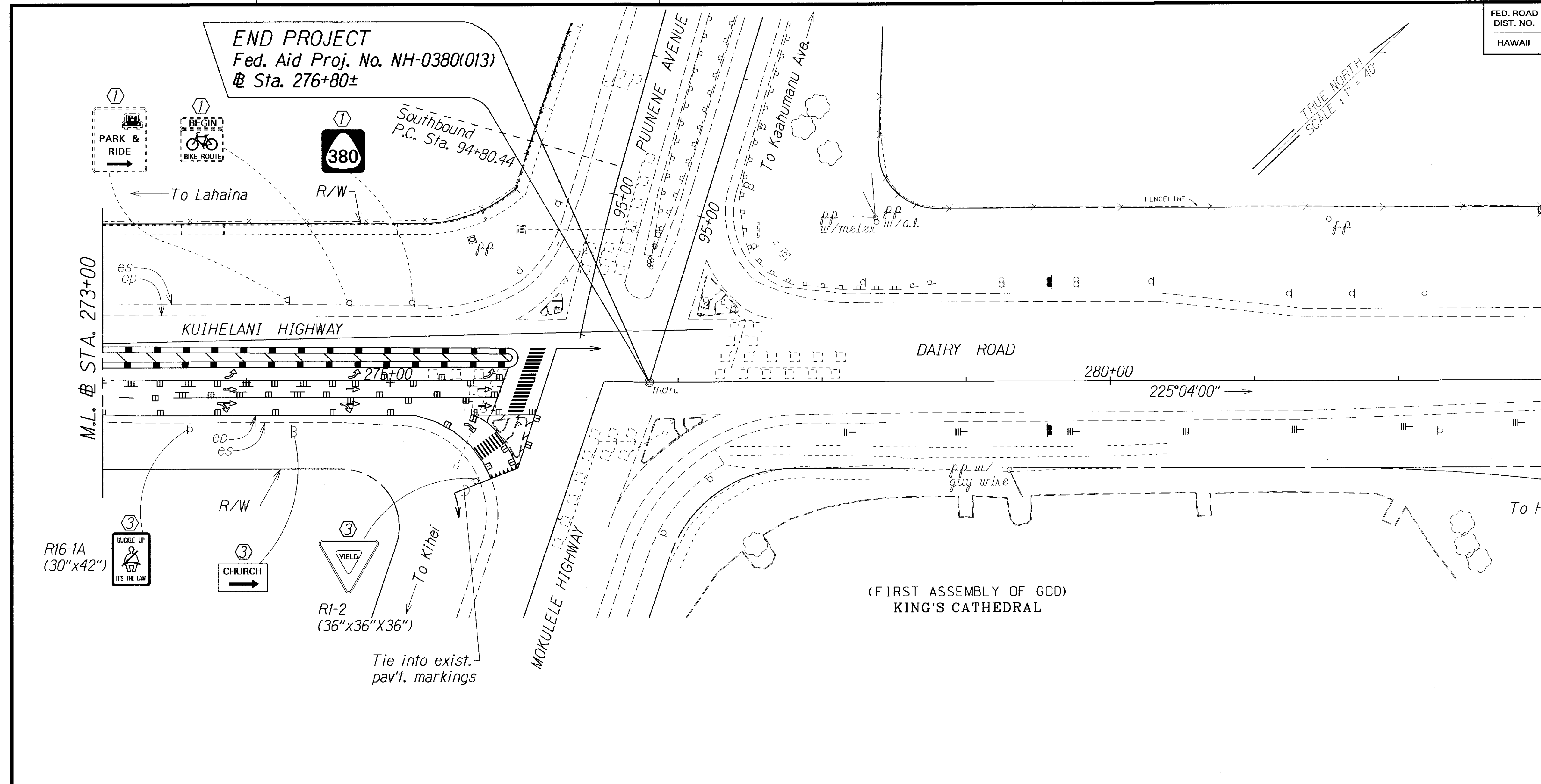
Scale: 1" = 40' Date: January, 2015

SHEET No. 13 OF 14 SHEETS

DATE	
SURVEY PLOTTED BY	
DRAWN BY	
TRACED BY	
CHECKED BY	
ORIGINAL PLAN	
NOTE BOOK	
CHECKED BY	
N.	

"AS-BUILT"

FED. ROAD DIST. NO.	STATE	FED. AID PROJ. NO.	FISCAL YEAR	SHEET NO.	TOTAL SHEETS
HAWAII	HAW.	NH-0380(013)	2015	44	44



SURVEY PLOTTED BY	DATE
DESIGNED BY	
TRACED BY	
NOTE BOOK	
QUANTITIES BY	
CHECKED BY	

LEGEND FOR AS-BUILT POSTINGS	
	Squiggly line for as-built deletion
	Double line for as-built deletion
Roadway	Text for as-built posting

- KEY:**
- ① Exist. Sign(s) & Post(s) to Remain
 - ② Remove Exist. Sign(s) & Post(s)
 - ③ Remove Exist. & Install New Sign(s) & Post(s)
 - ④ Install New Sign(s) & Post(s)
 - ⑤ Relocate Exist. Sign(s) & Post(s)
 - ⑥ Remove Exist. & Install New Sign(s) on Traffic Signal Post(s)

STATE OF HAWAII
DEPARTMENT OF TRANSPORTATION
HIGHWAYS DIVISION

SIGNING & PAVEMENT MARKING PLANS

KUIHELANI HIGHWAY RESURFACING
Honoapiilani Highway to Puunene Avenue
Federal-Aid Project No. NH-0380(013)

Scale: 1" = 40' Date: January, 2015

SHEET No. 14 OF 14 SHEETS

"AS-BUILT"