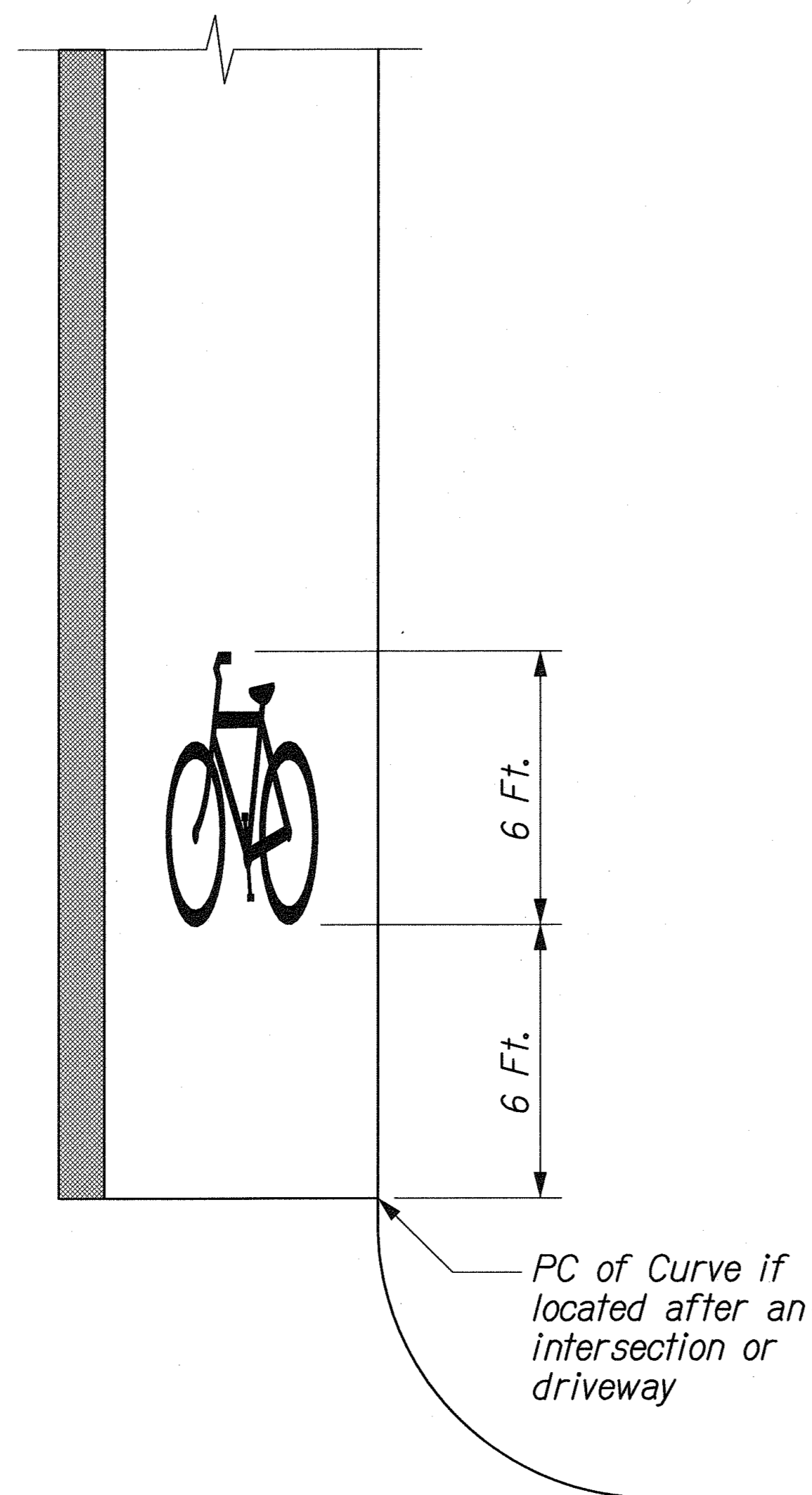


ABBREVIATIONS:

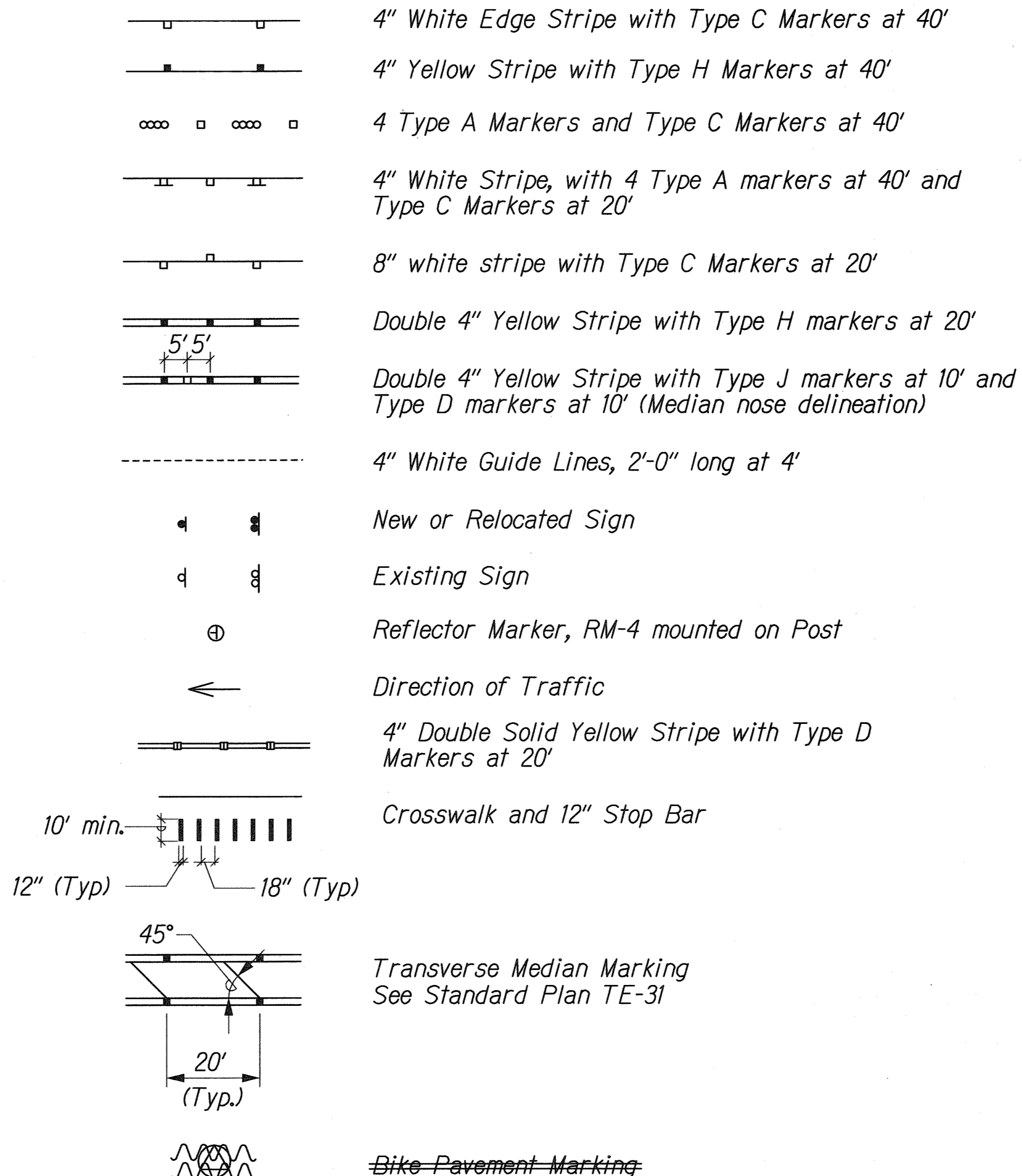
RM Reflector Markers

SIGN LEGEND:



"BIKE" PAVEMENT MARKING
Not to Scale

LEGEND:



SIGNING NOTES:

1. Sign details shall conform to the latest editions and amendments of the following FHWA publications: "Manual on Uniform Traffic Control Devices for Streets and Highways", "Standard Highway Signs" and "Standard Alphabets for Highway Signs".
2. For Miscellaneous Sign Details, see Standard Plan TE-01 to TE-18.
3. Superfluous Existing Signs are generally not shown on plans. They shall be removed and disposed of by the Contractor. Removal of signs shall also include the removal of post and foundation to a minimum height of 1-foot below the ground. Payment shall be incidental to the various contract items.
4. The Contractor shall backfill all holes, depressions and pits left by the removal of the existing signs with embankment material and grass all areas exposed in accordance with Specifications Section 618-Grassed Surfaces.
5. Existing RM-2 markers and posts delineating existing headwalls and structures to be removed shall be relocated to the location of the new structure.

PAVEMENT MARKING NOTES:

1. Pavement edge striping shall be reflective thermoplastic compound pavement markings or permanent preformed pavement marking tape Type II. Lane striping shall be reflective thermoplastic compound pavement markings or permanent preformed pavement marking tape Type I. Symbols, legends and intersection markings shall be reflective thermoplastic compound pavement markings or permanent preformed pavement marking tape Type III.
2. Location of pavement markers is shown schematically. For exact location of markers in relation to stripe, see Standard Plans TE-30, TE-31 & TE-32.

SURVEY PLOTTED BY	DATE
DRAWN BY	
CHECKED BY	
NOTED BY	
QUANTITIES BY	
CHECKED BY	
ORIGINAL PLAN	
NOTE BOOK	
N.	

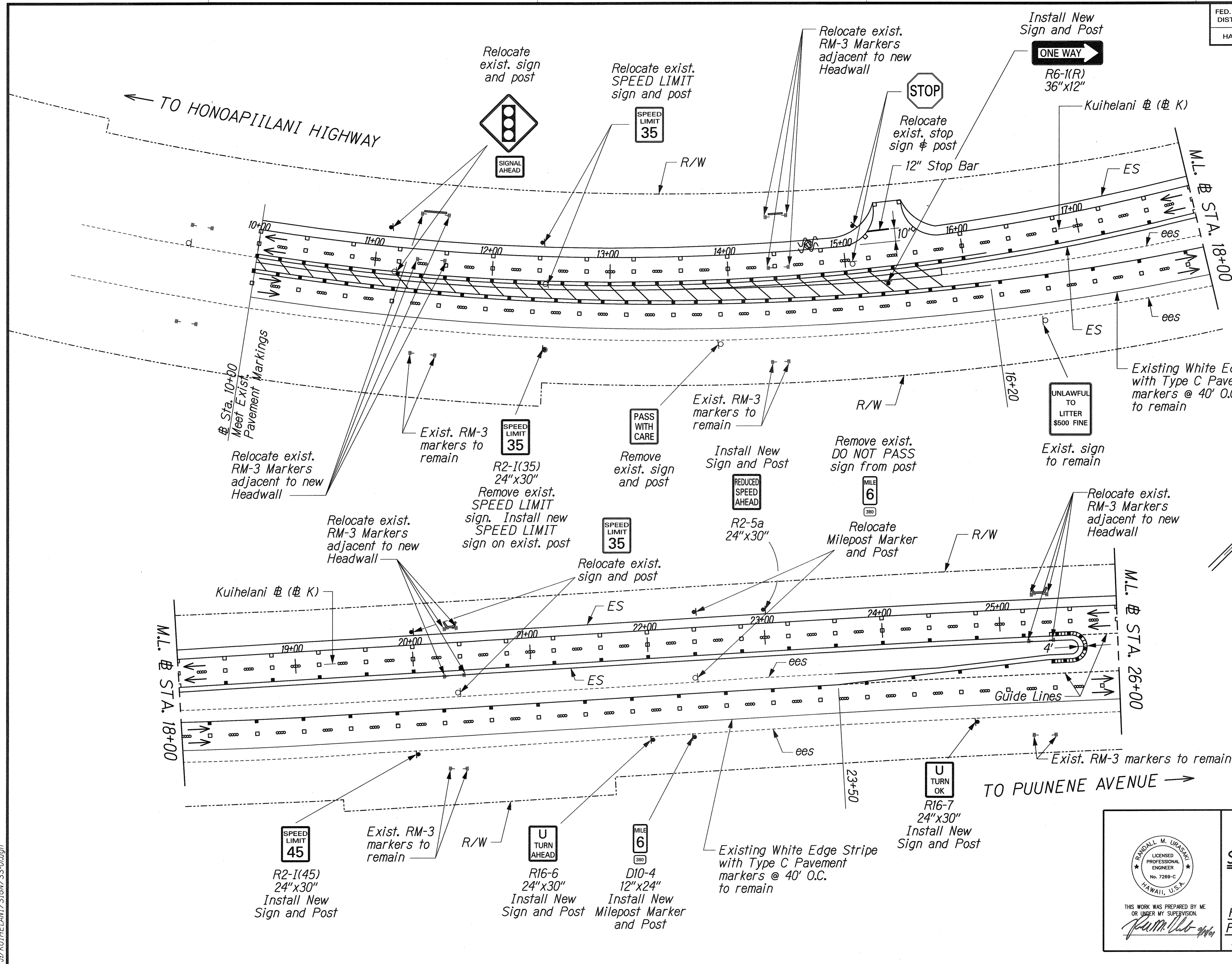
J:\KUIHELANI\SIGN\SS-NOTES.dgn

LEGEND FOR AS-BUILT POSTINGS

	Squiggly line for as-built deletion
	Double line for as-built deletion
Roadway	Text for as-built posting

STATE OF HAWAII
DEPARTMENT OF TRANSPORTATION
HIGHWAYS DIVISION
**SIGNING AND PAVEMENT NOTES
AND LEGEND MARKINGS**
KUIHELANI HIGHWAY WIDENING
HONOAPIILANI HIGHWAY TO PUUNENE AVENUE
FEDERAL-AID PROJECT NO. NH-0380(9)
Scale: None Date: Sept. 14, 2001

FED. ROAD DIST. NO.	STATE	FED. AID PROJ. NO.	FISCAL YEAR	SHEET NO.	TOTAL SHEETS
HAWAII	HAW.	NH-0380(9)	2000	236	380

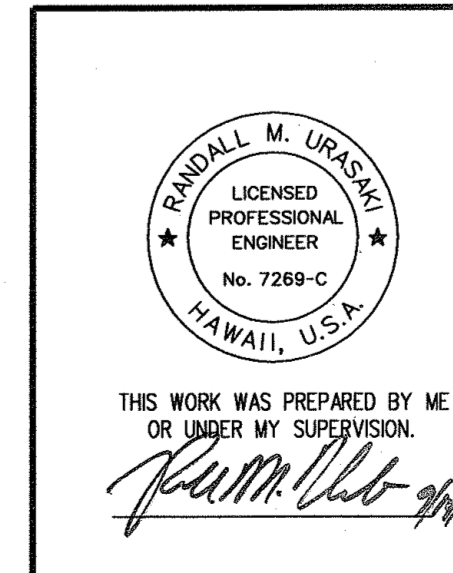


LEGEND FOR AS-BUILT POSTINGS

	Squiggly line for as-built deletion
	Double line for as-built deletion
Roadway	Text for as-built posting

SURVEY PLOTTED BY	DATE
DRAWN BY	
DESIGNED BY	
QUANTITIES BY	
CHECKED BY	
ORIGINAL PLAN	
NOTE BOOK	
NO.	

KUIHELANI SIGN/SS-01.dgn

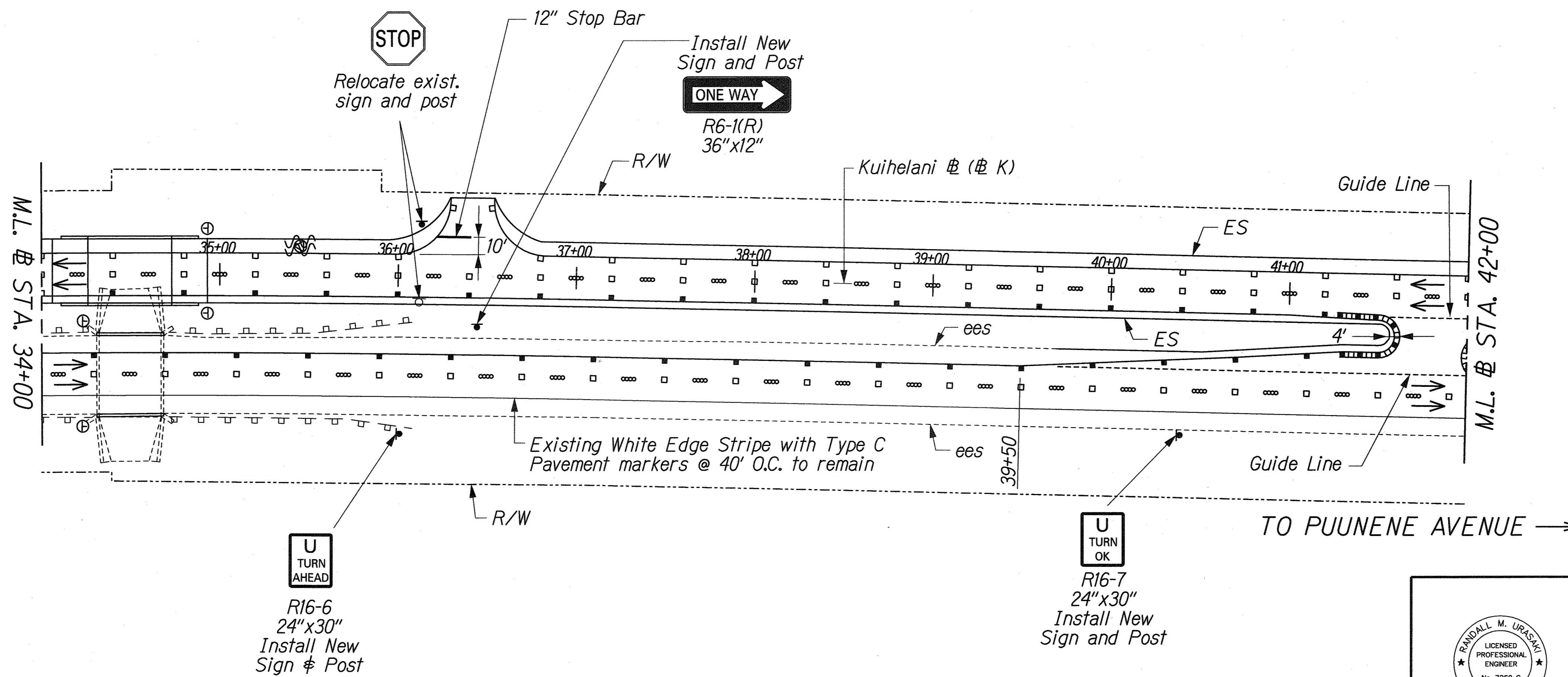
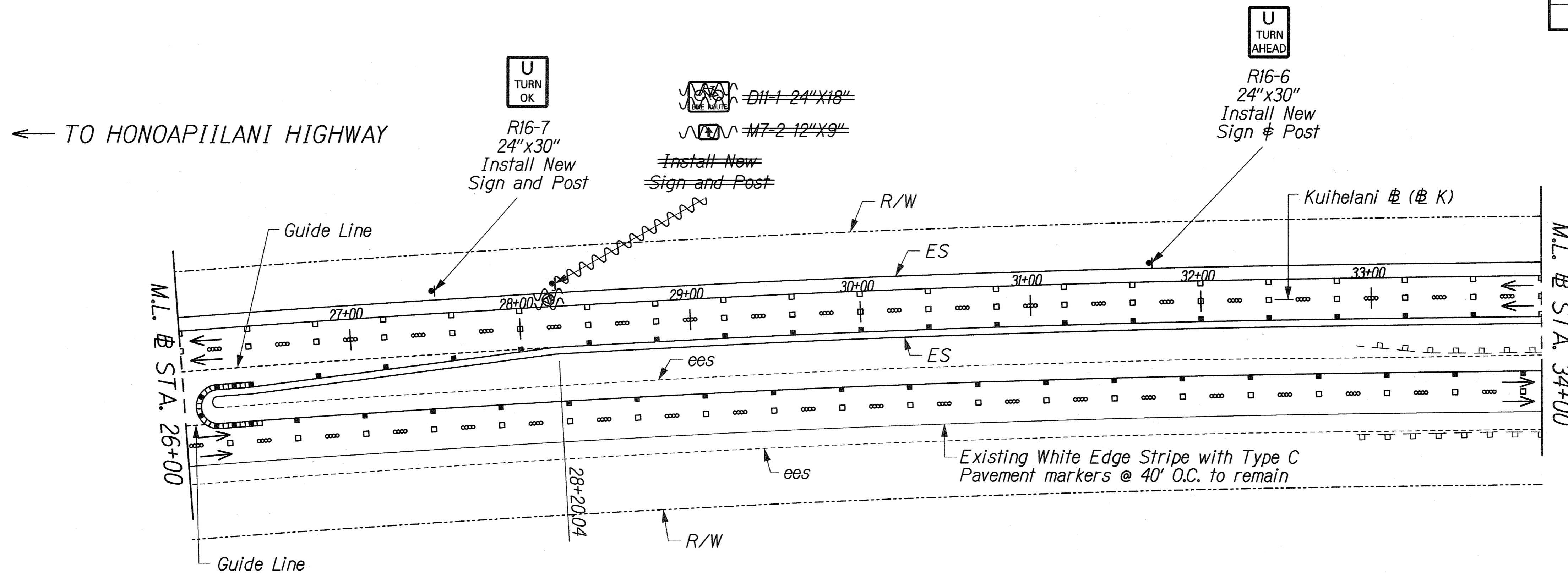


STATE OF HAWAII
DEPARTMENT OF TRANSPORTATION
HIGHWAYS DIVISION

SIGNING AND PAVEMENT MARKINGS

KUIHELANI HIGHWAY WIDENING
HONOAPILANI HIGHWAY TO PUUNENE AVENUE
FEDERAL-AID PROJECT NO. NH-0380(9)
Scale: 1"=40' Date: Sept. 14, 2001

FED. ROAD DIST. NO.	STATE	FED. AID PROJ. NO.	FISCAL YEAR	SHEET NO.	TOTAL SHEETS
HAWAII	HAW.	NH-0380(9)	2000	237	380



TRUE NORTH
SCALE: 1" = 40'

TRUE NORTH
SCALE: 1" = 40'

LEGEND FOR AS-BUILT POSTINGS	
	Squiggly line for as-built deletion
	Double line for as-built deletion
Roadway	Text for as-built posting

SURVEY PLOTTED BY	DATE
DESIGNED BY	
NOTED BY	
CHECKED BY	
ORIGINAL PLAN	
NOTE BOOK	
QUANTITIES BY	
CHECKED BY	
No.	

6-KUIHELANI/SIGN/SS-02.dgn

RANDALL M. URASAKI
LICENSED PROFESSIONAL ENGINEER
No. 7269-C
HAWAII, U.S.A.

THIS WORK WAS PREPARED BY ME OR UNDER MY SUPERVISION.
Rum 9/14/01

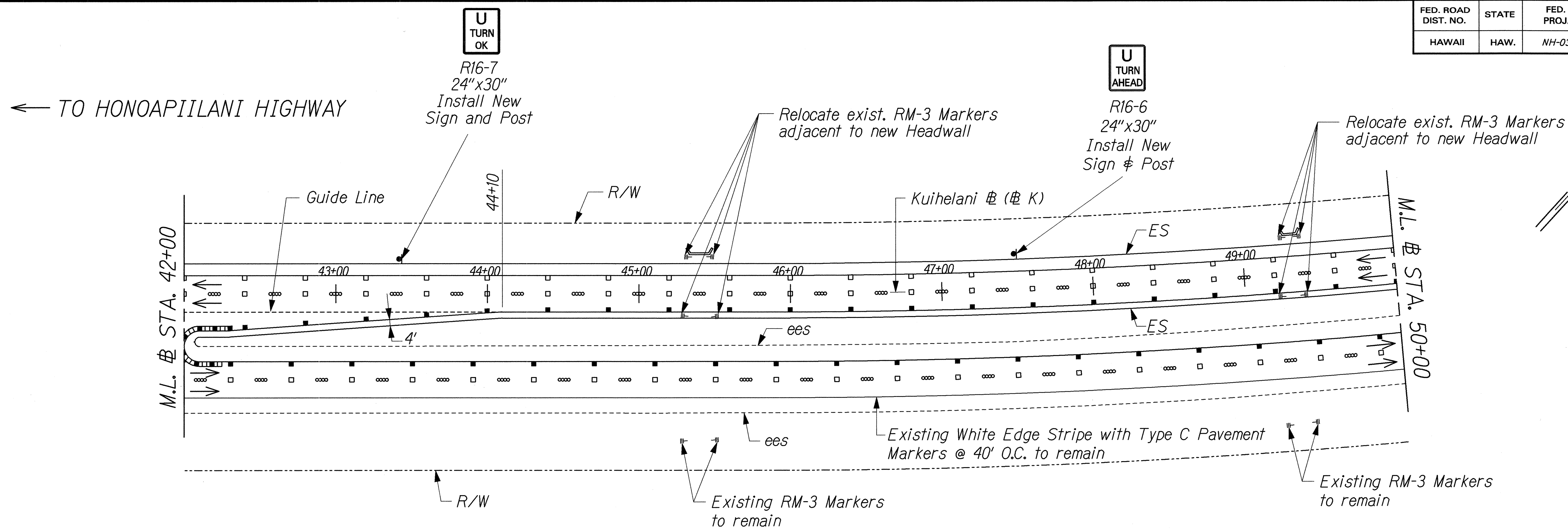
STATE OF HAWAII
DEPARTMENT OF TRANSPORTATION
HIGHWAYS DIVISION

SIGNING AND PAVEMENT MARKINGS

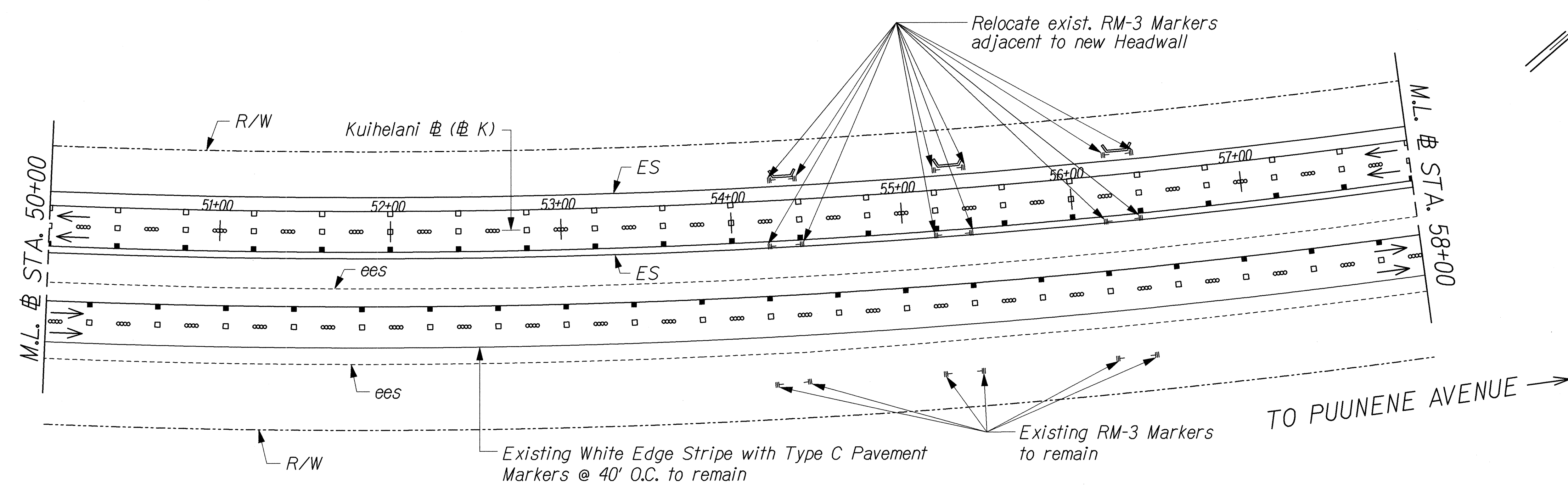
KUIHELANI HIGHWAY WIDENING
HONOAPIILANI HIGHWAY TO PUUNENE AVENUE
FEDERAL-AID PROJECT NO. NH-0380(9)
Scale: 1"=40' Date: Sept. 14, 2001

"AS-BUILT"

FED. ROAD DIST. NO.	STATE	FED. AID PROJ. NO.	FISCAL YEAR	SHEET NO.	TOTAL SHEETS
HAWAII	HAW.	NH-0380(9)	2000	238	380



TRUE NORTH
SCALE: 1" = 40'

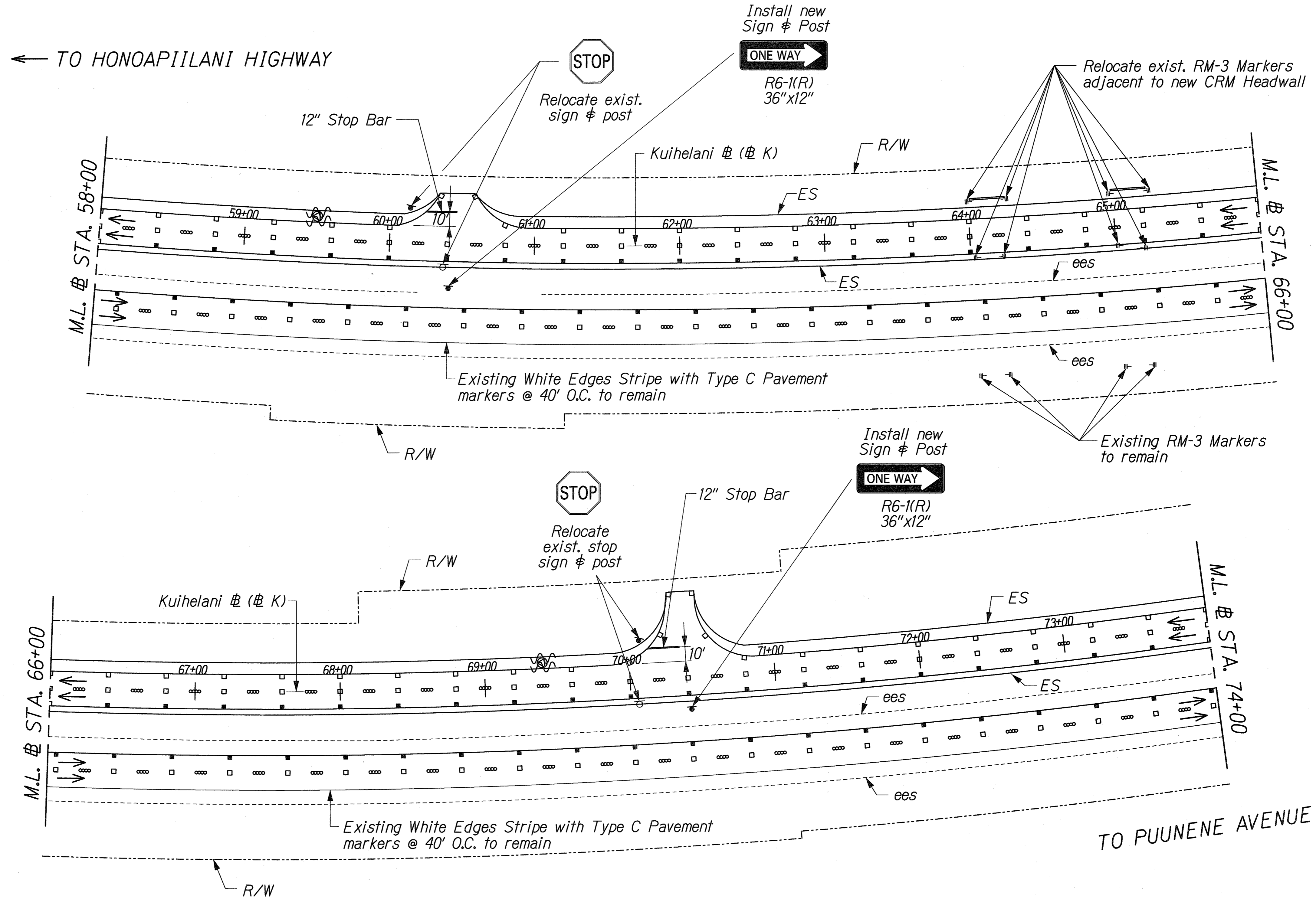


TRUE NORTH
SCALE: 1" = 40'

DATE	_____
SURVEY PLOTTED BY	_____
DRAWN BY	_____
DESIGNED BY	_____
CHECKED BY	_____
NO. _____	_____

J:\KUIHELANI\SIGN\SS-03.dgn

	STATE OF HAWAII DEPARTMENT OF TRANSPORTATION HIGHWAYS DIVISION SIGNING AND PAVEMENT MARKINGS
	KUIHELANI HIGHWAY WIDENING HONOAPIILANI HIGHWAY TO PUUNENE AVENUE FEDERAL-AID PROJECT NO. NH-0380(9) Scale: 1"=40' Date: Sept. 14, 2001



DATE	_____
SURVEY PLOTTED BY	_____
DRAWN BY	_____
TRACED BY	_____
NOTE BOOK	_____
QUANTITIES BY	_____
CHECKED BY	_____
No.	_____

J:\KUIHELANI\SIGN\SS-04.dgn

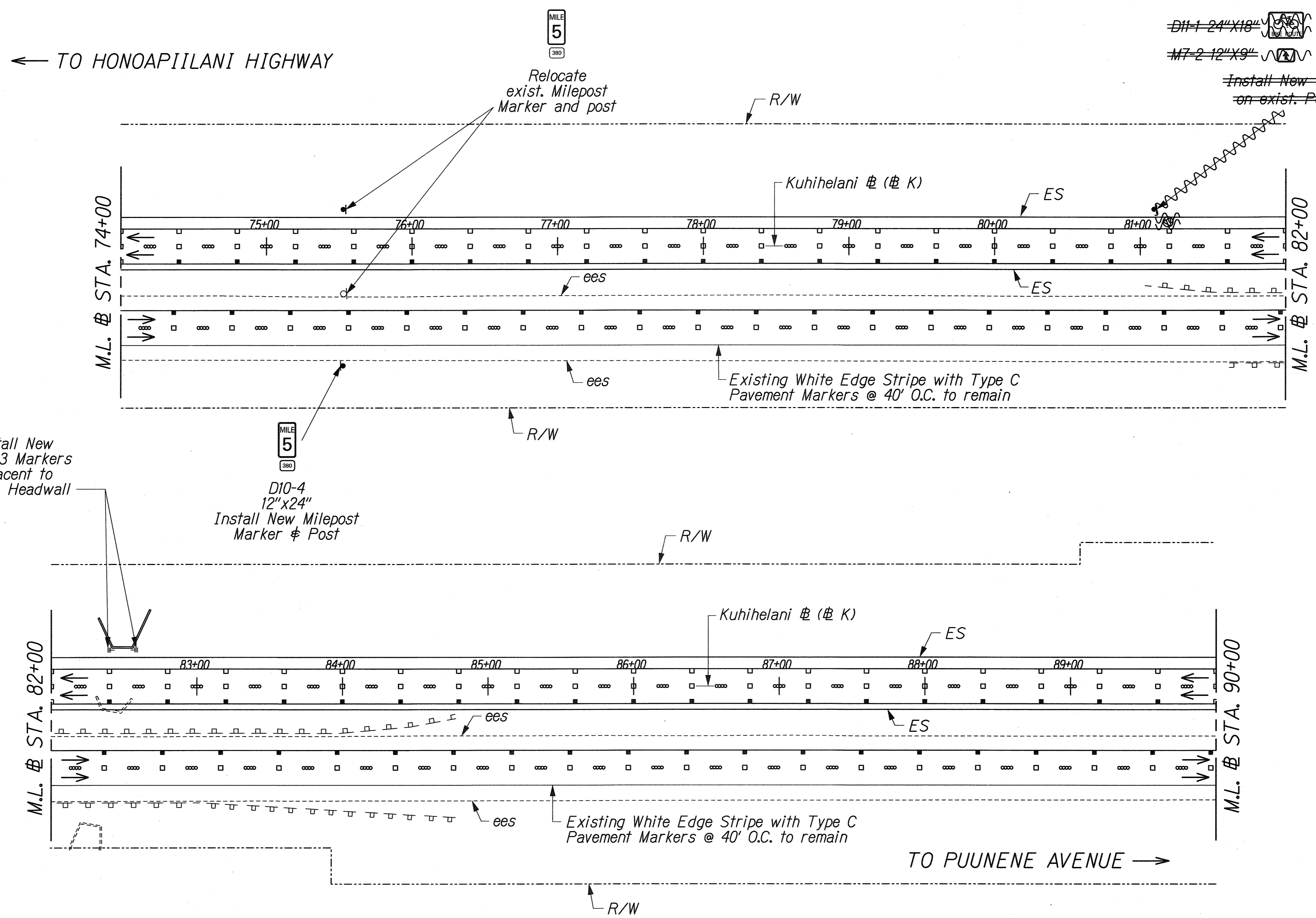
LEGEND FOR AS-BUILT POSTINGS	
	Squiggly line for as-built deletion
	Double line for as-built deletion
Roadway	Text for as-built posting

THIS WORK WAS PREPARED BY ME OR UNDER MY SUPERVISION.
Randall M. Uraski

STATE OF HAWAII
 DEPARTMENT OF TRANSPORTATION
 HIGHWAYS DIVISION
SIGNING AND PAVEMENT MARKINGS

KUIHELANI HIGHWAY WIDENING
HONOAPIILANI HIGHWAY TO PUUNENE AVENUE
FEDERAL-AID PROJECT NO. NH-0380(9)
 Scale: 1"=40' Date: Sept. 14, 2001

FED. ROAD DIST. NO.	STATE	FED. AID PROJ. NO.	FISCAL YEAR	SHEET NO.	TOTAL SHEETS
HAWAII	HAW.	NH-0380(9)	2000	240	380



~~D11-1 24" X 18"~~
~~M7-2 12" X 9"~~
 Install New Sign on exist. Post

Install New RM-3 Markers adjacent to New Headwall
 D10-4 12" X 24"
 Install New Milepost Marker & Post

TRUE NORTH
SCALE: 1" = 40'

LEGEND FOR AS-BUILT POSTINGS	
	Squiggly line for as-built deletion
	Double line for as-built deletion
Roadway	Text for as-built posting

ORIGINAL PLAN	DATE
SURVEY PLOTTED BY	
TRACED BY	
DESIGNED BY	
QUANTITIES BY	
CHECKED BY	
NO.	

4-KUIHELANI/STGN/SS-05.dgn

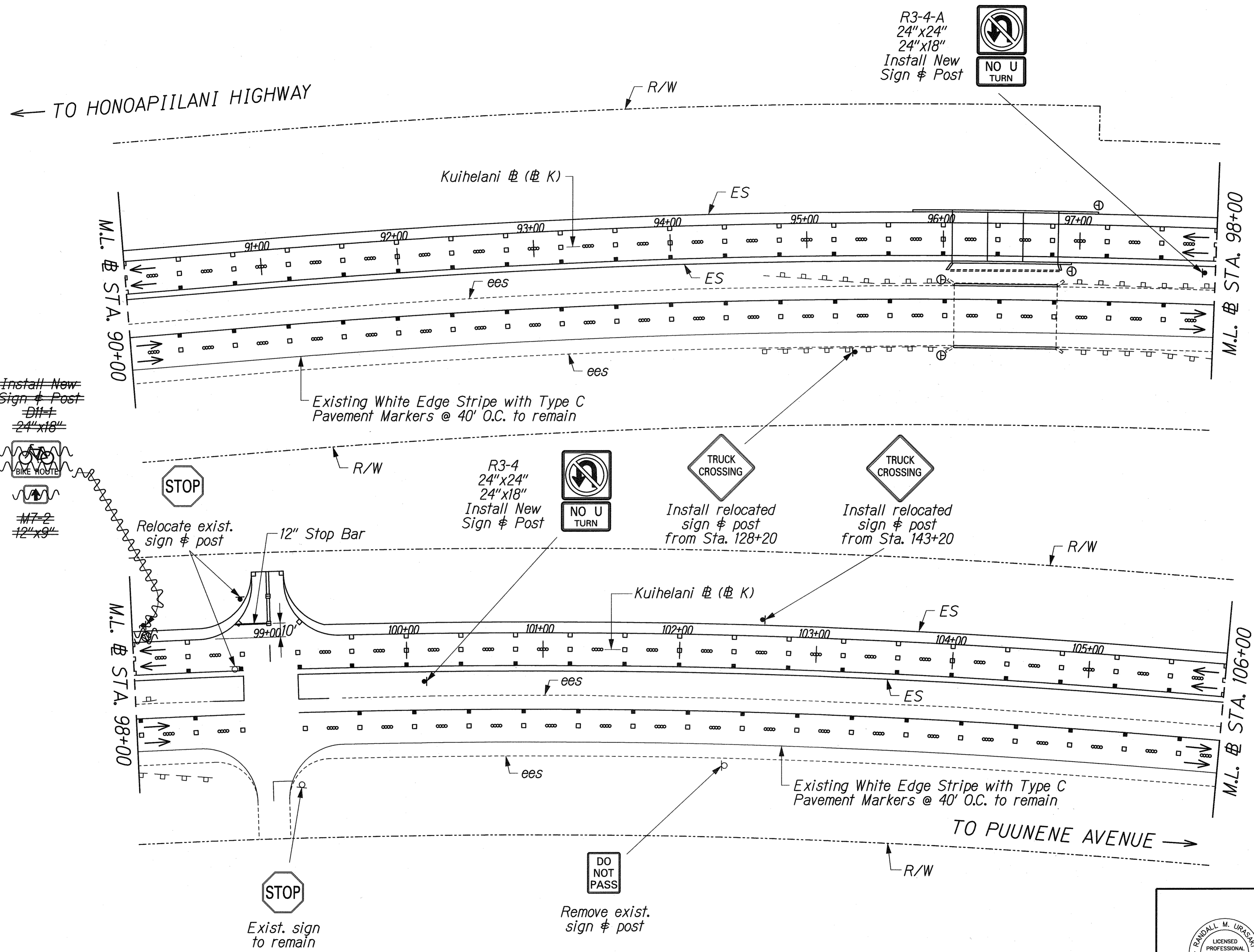
RANDALL M. URASAKI
 LICENSED PROFESSIONAL ENGINEER
 No. 7269-C
 HAWAII, U.S.A.
 THIS WORK WAS PREPARED BY ME OR UNDER MY SUPERVISION.
R. M. Urasaki 9/14/01

STATE OF HAWAII
 DEPARTMENT OF TRANSPORTATION
 HIGHWAYS DIVISION
SIGNING AND PAVEMENT MARKINGS
 KUIHELANI HIGHWAY WIDENING
 HONOAPIILANI HIGHWAY TO PUUNENE AVENUE
 FEDERAL-AID PROJECT NO. NH-0380(9)
 Scale: As Shown Date: Sept. 14, 2001

"AS-BUILT"

FED. ROAD DIST. NO.	STATE	FED. AID PROJ. NO.	FISCAL YEAR	SHEET NO.	TOTAL SHEETS
HAWAII	HAW.	NH-0380(9)	2000	241	380

TRUE NORTH
SCALE: 1" = 40'



LEGEND FOR AS-BUILT POSTINGS

	Squiggly line for as-built deletion
	Double line for as-built deletion
Roadway	Text for as-built posting

SURVEY PLOTTED BY	DATE
DRAWN BY	
TRACED BY	
NOTE BOOK	
QUANTITIES BY	
CHECKED BY	
No.	

J:\KUIHELANI\SIGN\SS-06.dgn

STATE OF HAWAII
DEPARTMENT OF TRANSPORTATION
HIGHWAYS DIVISION

SIGNING AND PAVEMENT MARKINGS

**KUIHELANI HIGHWAY WIDENING
HONOAPIILANI HIGHWAY TO PUUNENE AVENUE
FEDERAL-AID PROJECT NO. NH-0380(9)
Scale: 1"=40' Date: Sept. 14, 2001**

THIS WORK WAS PREPARED BY ME OR UNDER MY SUPERVISION

Randall M. Urasky 9/14/01

STATE OF HAWAII
DEPARTMENT OF TRANSPORTATION
HIGHWAYS DIVISION

SIGNING AND PAVEMENT MARKINGS

**KUIHELANI HIGHWAY WIDENING
HONOAPIILANI HIGHWAY TO PUUNENE AVENUE
FEDERAL-AID PROJECT NO. NH-0380(9)
Scale: 1"=40' Date: Sept. 14, 2001**

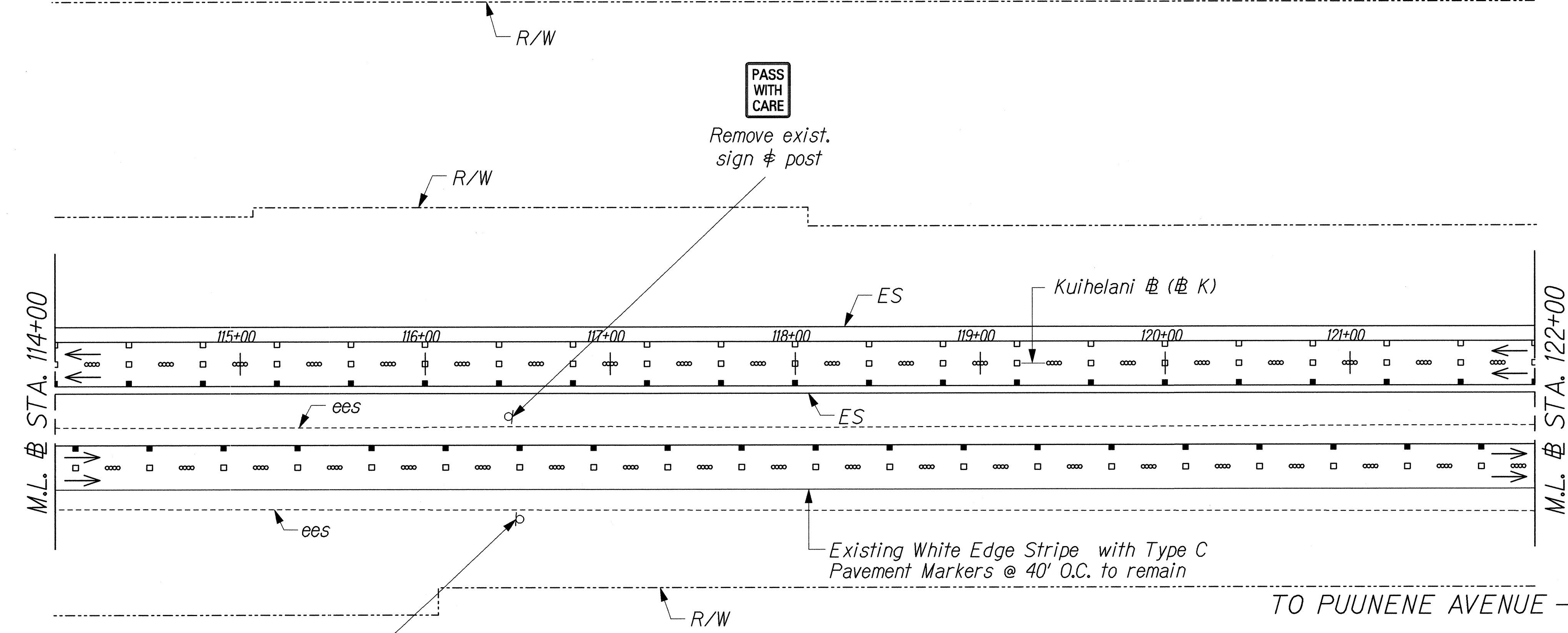
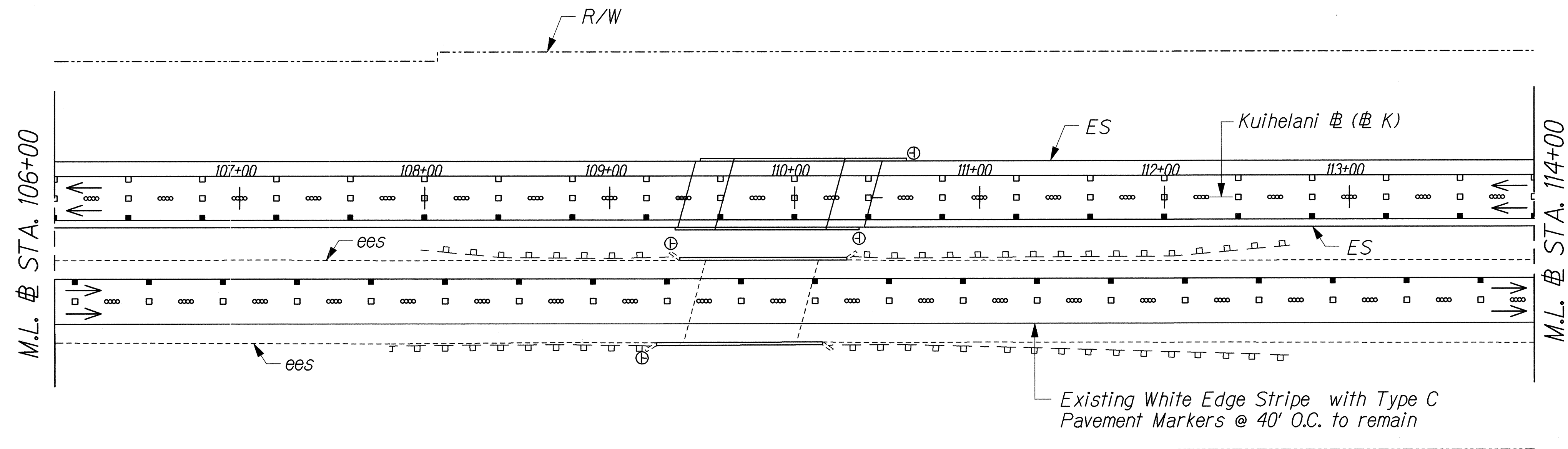
SHEET No. M7 OF 19 SHEETS

"AS-BUILT"

FED. ROAD DIST. NO.	STATE	FED. AID PROJ. NO.	FISCAL YEAR	SHEET NO.	TOTAL SHEETS
HAWAII	HAW.	NH-0380(9)	2000	242	380

← TO HONOAPIILANI HIGHWAY

TRUE NORTH
SCALE: 1" = 40'



TRUE NORTH
SCALE: 1" = 40'

TO PUUNENE AVENUE →

DATE _____
SURVEY PLOTTED BY _____
DRAWN BY _____
TRACED BY _____
DESIGNED BY _____
CHECKED BY _____
NOTE BOOK _____
No. _____

J: KUIHELANI/SIGN/SS-07.dgn

PASS WITH CARE
Remove exist. sign & post

THIS WORK WAS PREPARED BY ME OR UNDER MY SUPERVISION.
Randall M. Urasaki 9/14/01

STATE OF HAWAII
DEPARTMENT OF TRANSPORTATION
HIGHWAYS DIVISION

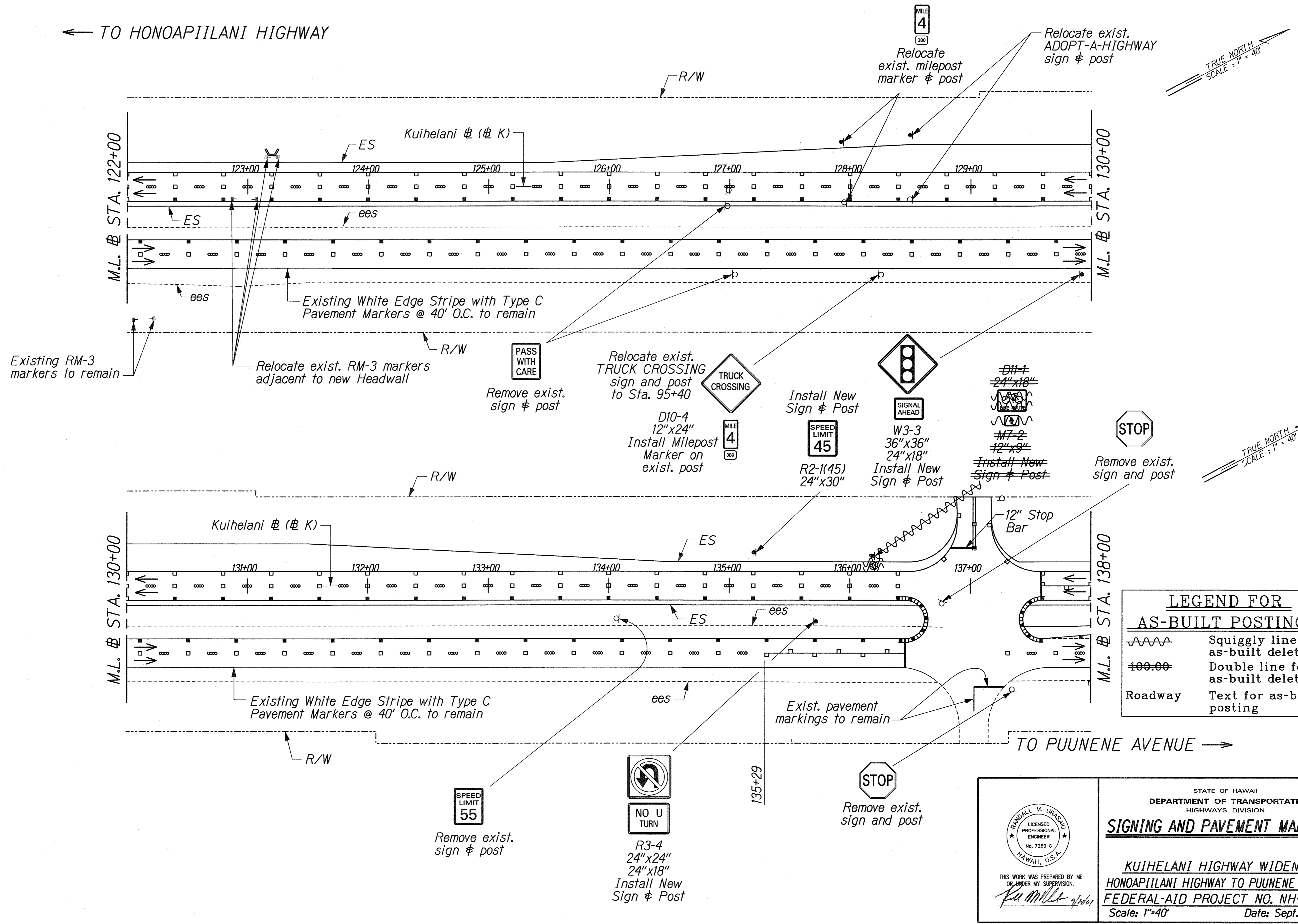
SIGNING AND PAVEMENT MARKINGS

KUIHELANI HIGHWAY WIDENING
HONOAPIILANI HIGHWAY TO PUUNENE AVENUE
FEDERAL-AID PROJECT NO. NH-0380(9)
Scale: 1"=40' Date: Sept. 14, 2001

SHEET No. 18 OF 19 SHEETS

FED. ROAD DIST. NO.	STATE	FED. AID PROJ. NO.	FISCAL YEAR	SHEET NO.	TOTAL SHEETS
HAWAII	HAW.	NH-0380(9)	2000	243	380

← TO HONOAPIILANI HIGHWAY



TRUE NORTH
SCALE: 1" = 40'

TRUE NORTH
SCALE: 1" = 40'

LEGEND FOR AS-BUILT POSTINGS	
	Squiggly line for as-built deletion
	Double line for as-built deletion
Roadway	Text for as-built posting

DATE	_____
SURVEY PLOTTED BY	_____
DRAWN BY	_____
DESIGNED BY	_____
CHECKED BY	_____
NO.	_____

J:\KUIHELANI\SIGN\SS-08.dgn

RANDALL M. URASAKI
LICENSED PROFESSIONAL ENGINEER
No. 7289-C
HAWAII, U.S.A.

THIS WORK WAS PREPARED BY ME OR UNDER MY SUPERVISION.
Ru Miller 9/14/01

STATE OF HAWAII
DEPARTMENT OF TRANSPORTATION
HIGHWAYS DIVISION

SIGNING AND PAVEMENT MARKINGS

**KUIHELANI HIGHWAY WIDENING
HONOAPIILANI HIGHWAY TO PUUNENE AVENUE
FEDERAL-AID PROJECT NO. NH-0380(9)**

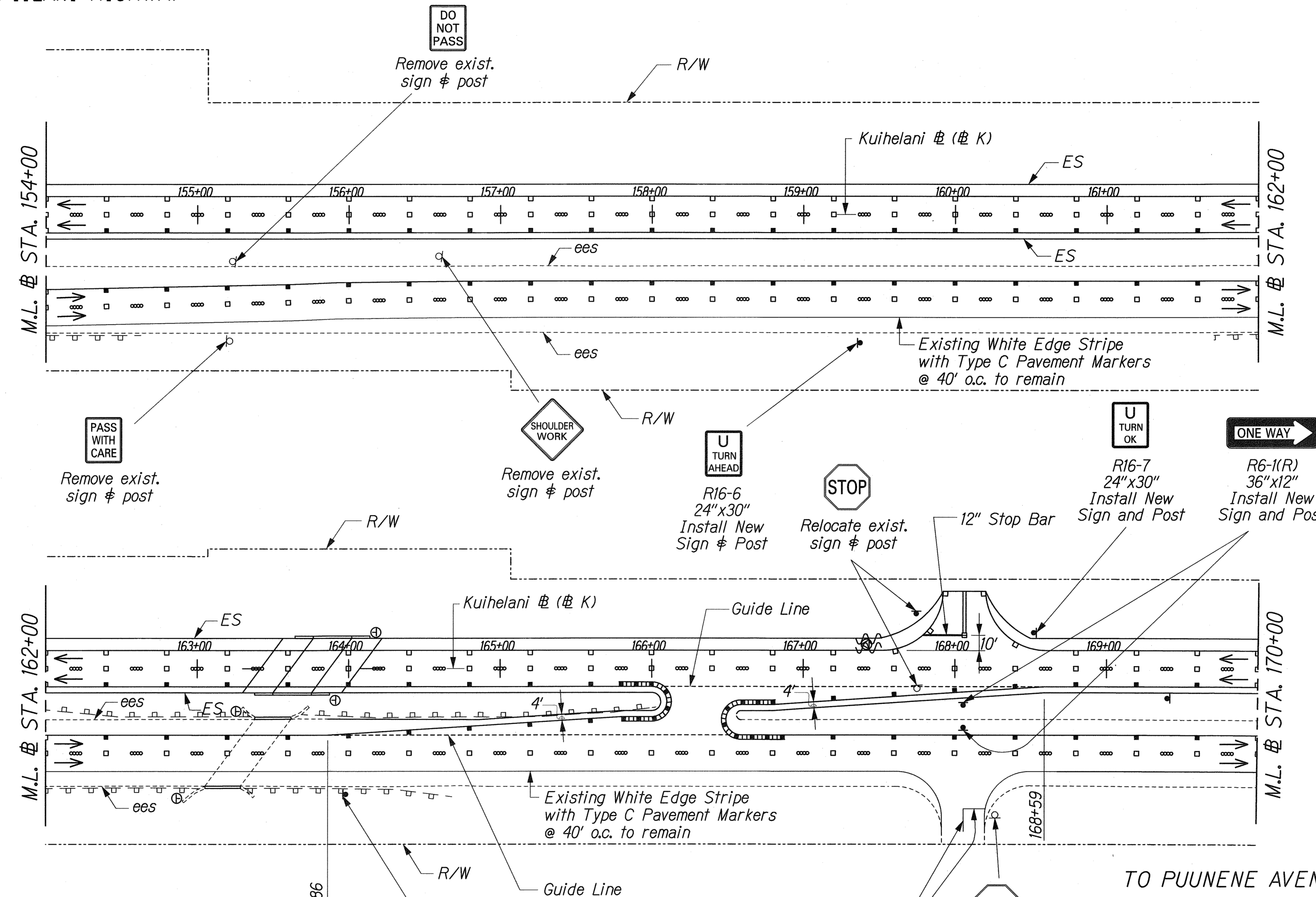
Scale: 1"=40' Date: Sept. 14, 2001

"AS-BUILT"

FED. ROAD DIST. NO.	STATE	FED. AID PROJ. NO.	FISCAL YEAR	SHEET NO.	TOTAL SHEETS
HAWAII	HAW.	NH-0380(9)	2000	245	380

← TO HONOAPIILANI HIGHWAY

TRUE NORTH
SCALE: 1" = 40'



TRUE NORTH
SCALE: 1" = 40'

TO PUUNENE AVENUE →

LEGEND FOR AS-BUILT POSTINGS

	Squiggly line for as-built deletion
	Double line for as-built deletion
Roadway	Text for as-built posting

U
TURN
OK
R16-7
24"x30"
Install New
Sign and Post

RANDALL M. URASAKI
LICENSED PROFESSIONAL ENGINEER
No. 7289-C
HAWAII, U.S.A.

THIS WORK WAS PREPARED BY ME OR UNDER MY SUPERVISION.
Ru M. Urasaki

STATE OF HAWAII
DEPARTMENT OF TRANSPORTATION
HIGHWAYS DIVISION

SIGNING AND PAVEMENT MARKINGS

KUIHELANI HIGHWAY WIDENING
HONOAPIILANI HIGHWAY TO PUUNENE AVENUE
FEDERAL-AID PROJECT NO. NH-0380(9)
Scale: 1"=40' Date: Sept. 14, 2001

SURVEY PLOTTED BY	DATE
DESIGNED BY	
TRACED BY	
NOTED BY	
CHECKED BY	
QUANTITIES BY	
NO.	

6-KUIHELANI SIGN/SS-10.dgn

"AS-BUILT"

245

SHEET No. 111 OF 19 SHEETS

FED. ROAD DIST. NO.	STATE	FED. AID PROJ. NO.	FISCAL YEAR	SHEET NO.	TOTAL SHEETS
HAWAII	HAW.	NH-0380(9)	2000	246	380

← TO HONOAPIILANI HIGHWAY

Install new Sign & Post

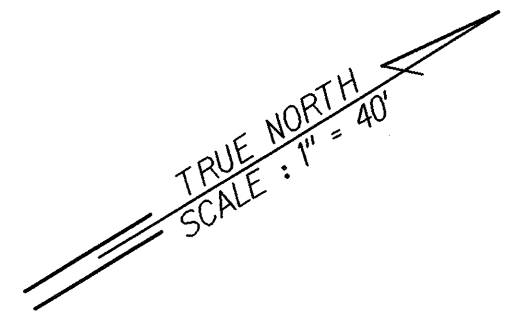
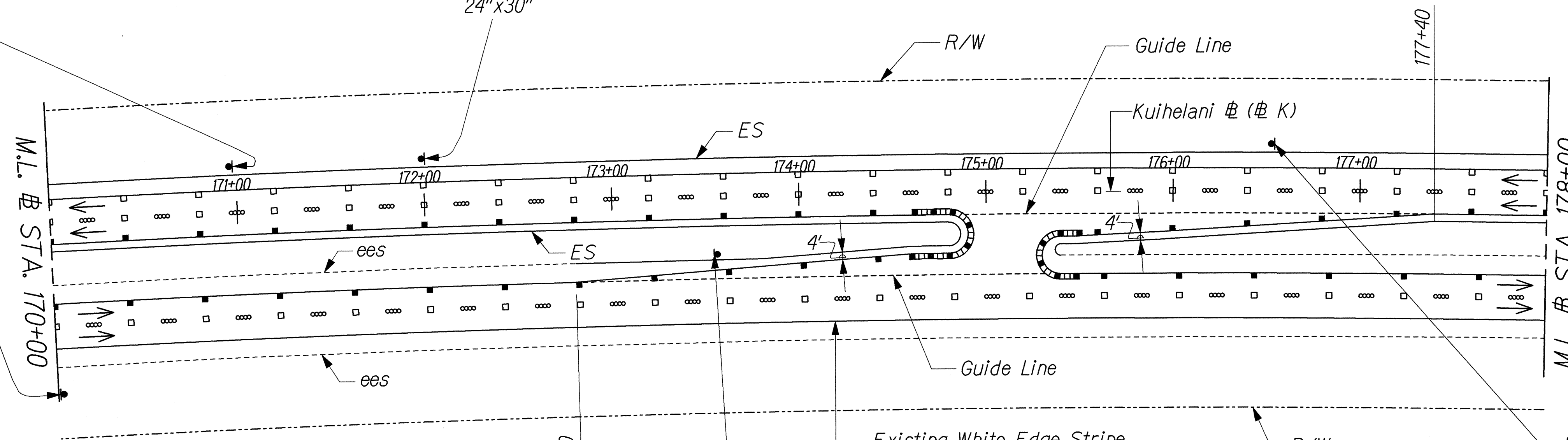


R16-6
24"x30"

Install new Sign & Post



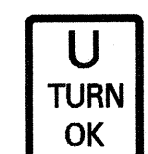
R2-1(45)
24"x30"



Install new Sign & Post



R16-6
24"x30"



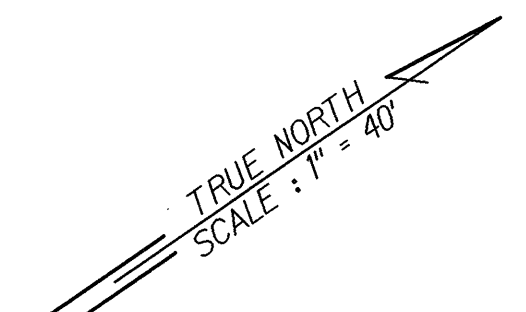
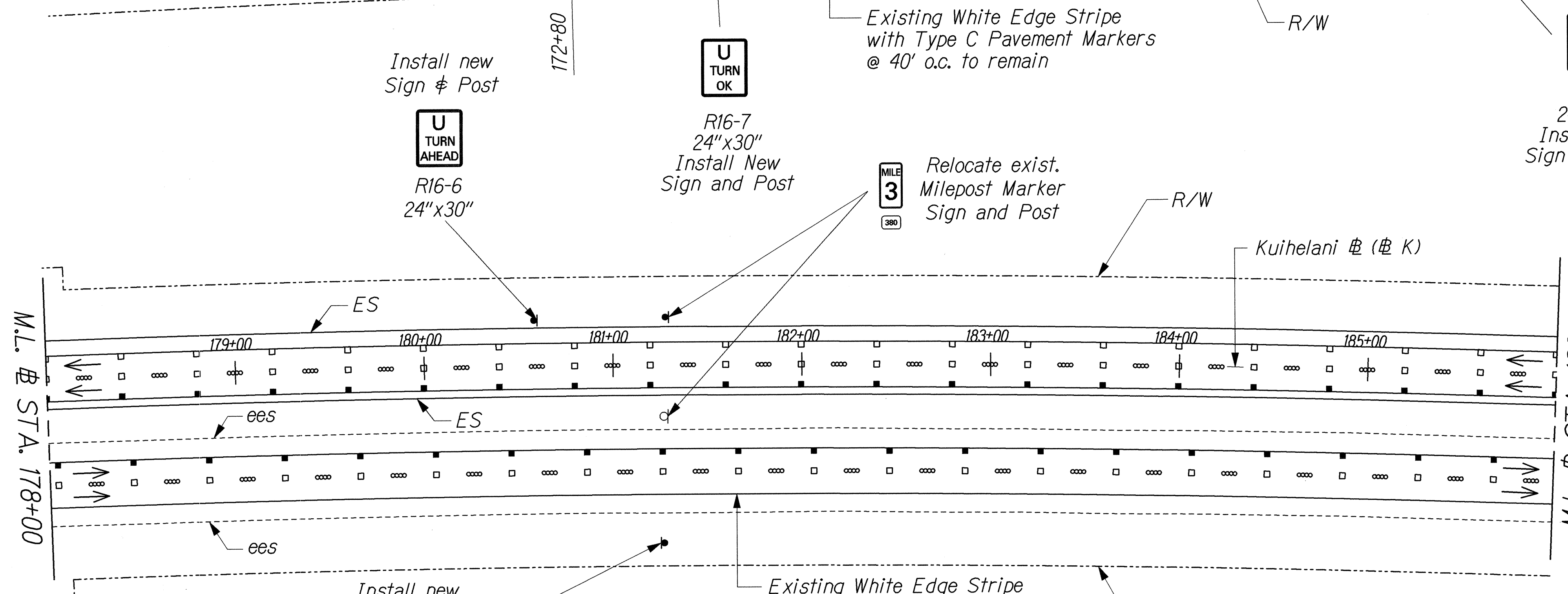
R16-7
24"x30"
Install New Sign and Post



Relocate exist. Milepost Marker Sign and Post



R16-7
24"x30"
Install New Sign and Post



Install new Milepost Marker & Post



D10-4
12"x24"

Existing White Edge Stripe with Type C Pavement Markers @ 40' o.c. to remain

TO PUUNENE AVENUE →

SURVEY PLOTTED BY	DATE
DRAWN BY	
DESIGNED BY	
CHECKED BY	
NOTE BOOK	
No.	

J6/KUIHELANI/SGN/SS-11.dgn

THIS WORK WAS PREPARED BY ME OR UNDER MY SUPERVISION.
R. M. Urasaki 1/1/01

STATE OF HAWAII
DEPARTMENT OF TRANSPORTATION
HIGHWAYS DIVISION

SIGNING AND PAVEMENT MARKINGS

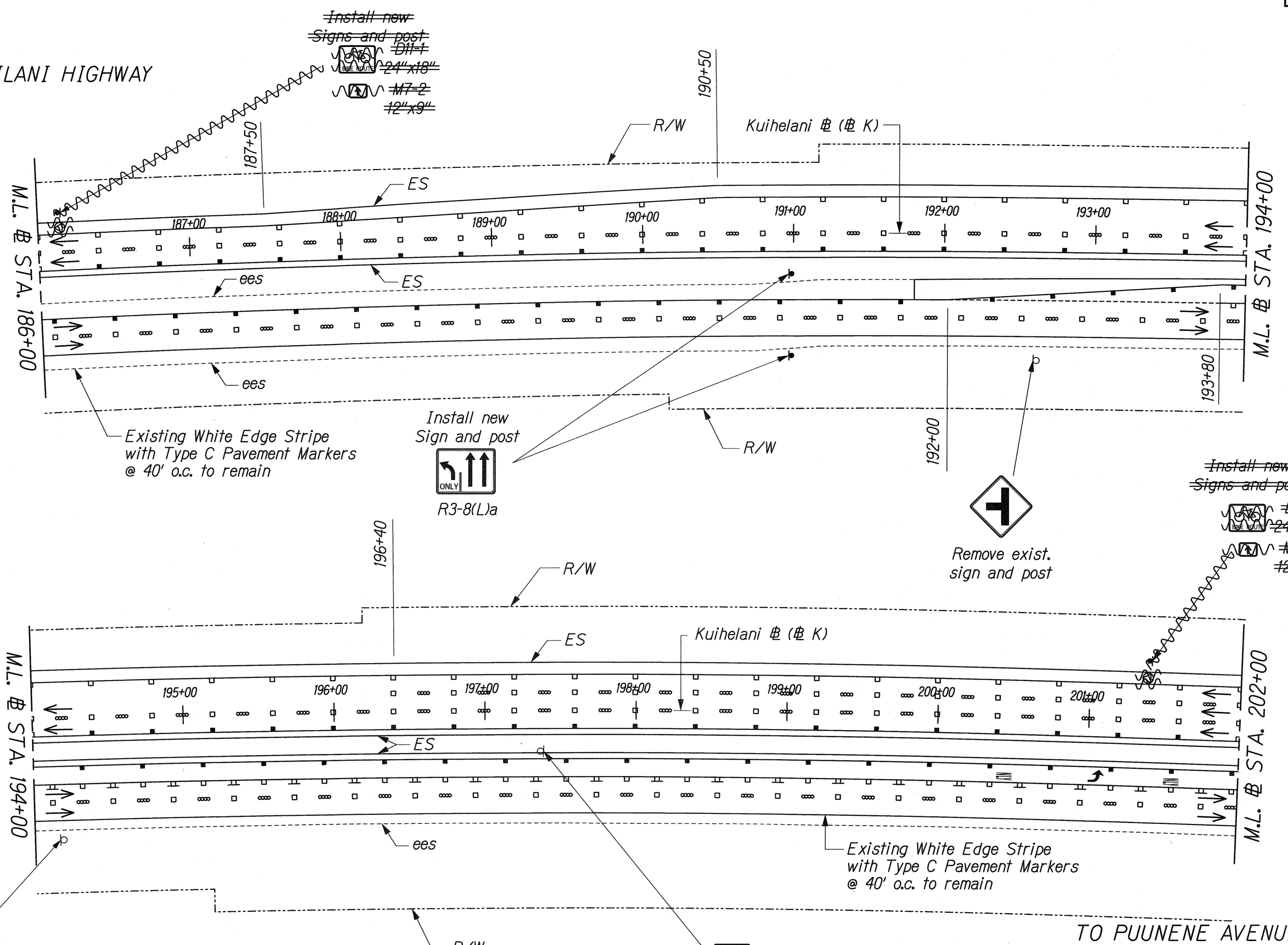
KUIHELANI HIGHWAY WIDENING
HONOAPIILANI HIGHWAY TO PUUNENE AVENUE
FEDERAL-AID PROJECT NO. NH-0380(9)
Scale: 1"=40' Date: Sept. 14, 2001

SHEET No. M12 OF 19 SHEETS

FED. ROAD DIST. NO.	STATE	FED. AID PROJ. NO.	FISCAL YEAR	SHEET NO.	TOTAL SHEETS
HAWAII	HAW.	NH-0380(9)	2000	247	380

← TO HONOAPIILANI HIGHWAY

TRUE NORTH
SCALE: 1" = 40'



Existing White Edge Stripe with Type C Pavement Markers @ 40' o.c. to remain

Install new Sign and post
R3-8(L)a

Remove exist. sign and post

Install new Signs and post
D#1+
#24"x18"
#7-2
#2"x9"

Existing White Edge Stripe with Type C Pavement Markers @ 40' o.c. to remain

TRUE NORTH
SCALE: 1" = 40'

TO PUUNENE AVENUE →

Remove exist. sign and post

Relocate exist. sign & post to Sta. 208+00

LEGEND FOR AS-BUILT POSTINGS	
	Squiggly line for as-built deletion
	Double line for as-built deletion
Roadway	Text for as-built posting

RANDALL M. URASAKI
LICENSED PROFESSIONAL ENGINEER
No. 7269-C
HAWAII, U.S.A.

THIS WORK WAS PREPARED BY ME OR UNDER MY SUPERVISION.
R. M. Urasaki

STATE OF HAWAII
DEPARTMENT OF TRANSPORTATION
HIGHWAYS DIVISION

SIGNING AND PAVEMENT MARKINGS

**KUIHELANI HIGHWAY WIDENING
HONOAPIILANI HIGHWAY TO PUUNENE AVENUE
FEDERAL-AID PROJECT NO. NH-0380(9)**

Scale: 1"=40' Date: Sept. 14, 2001

SURVEY PLOTTED BY	DATE
DRAWN BY	
IN CHARGE	
QUANTITIES BY	
CHECKED BY	
ORIGINAL PLAN	
NOTE BOOK	
No.	

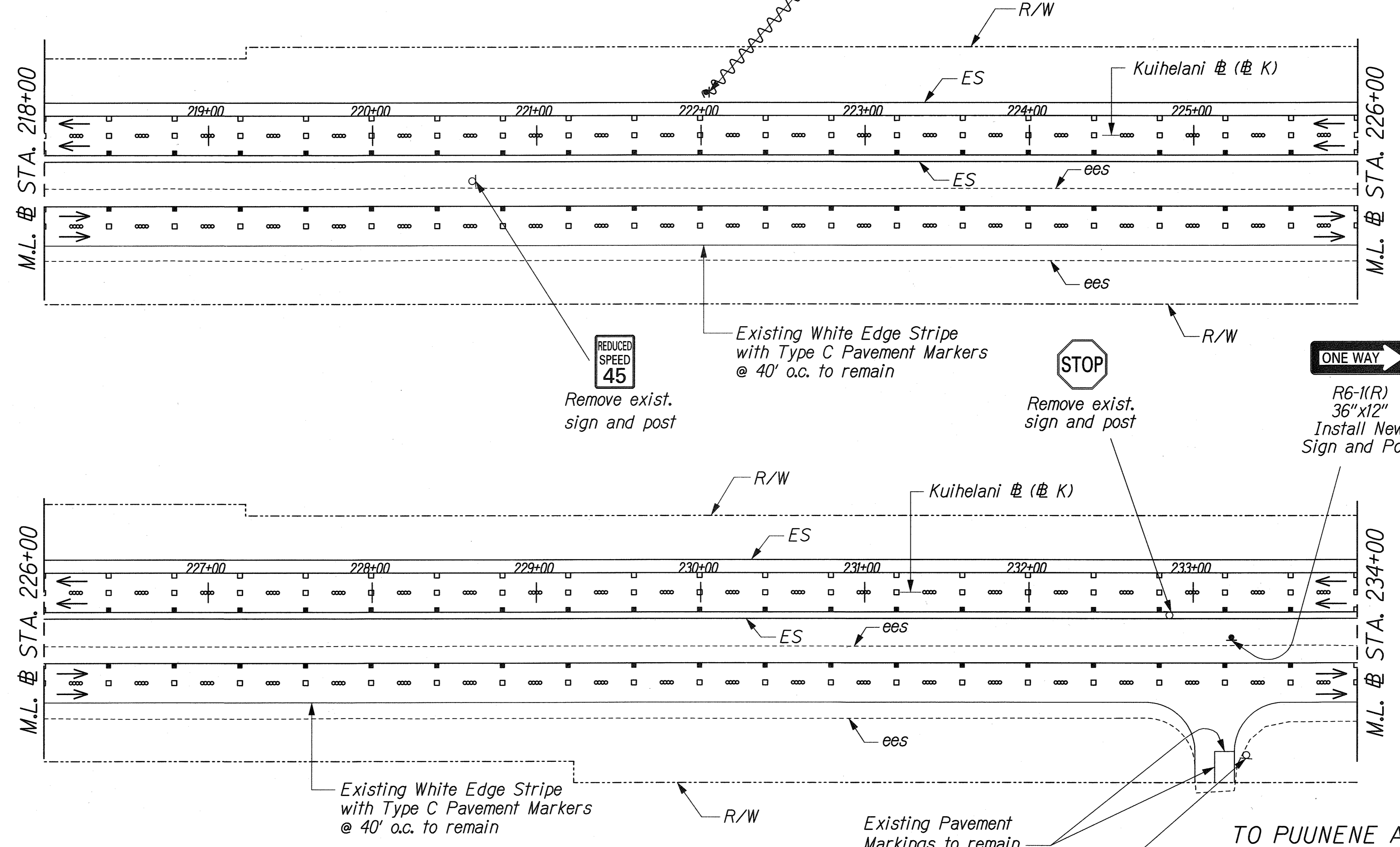
4-KUIHELANI-SIGN/SS-12.dgn

"AS-BUILT"

← TO HONOAPIILANI HIGHWAY

D11-1 24"X18"
M7-2 12"X9"

Install New Signs and Post



TRUE NORTH
SCALE: 1" = 40'

TRUE NORTH
SCALE: 1" = 40'

TO PUUNENE AVENUE →

DATE	_____
SURVEY PLOTTED BY	_____
DRAWN BY	_____
TRACED BY	_____
DESIGNED BY	_____
CHECKED BY	_____
NOTE BOOK	_____
NO.	_____

JL/KUIHELANI/SIGN/SS-14.dgn

LEGEND FOR AS-BUILT POSTINGS	
	Squiggly line for as-built deletion
	Double line for as-built deletion
Roadway	Text for as-built posting

STATE OF HAWAII
DEPARTMENT OF TRANSPORTATION
HIGHWAYS DIVISION

SIGNING AND PAVEMENT MARKINGS

KUIHELANI HIGHWAY WIDENING
HONOAPIILANI HIGHWAY TO PUUNENE AVENUE
FEDERAL-AID PROJECT NO. NH-0380(9)
Scale: 1"=40' Date: Sept. 14, 2001

THIS WORK WAS PREPARED BY ME OR UNDER MY SUPERVISION.
Randall M. Urasaki
LISCENSED PROFESSIONAL ENGINEER
No. 7269-C
HAWAII, U.S.A.

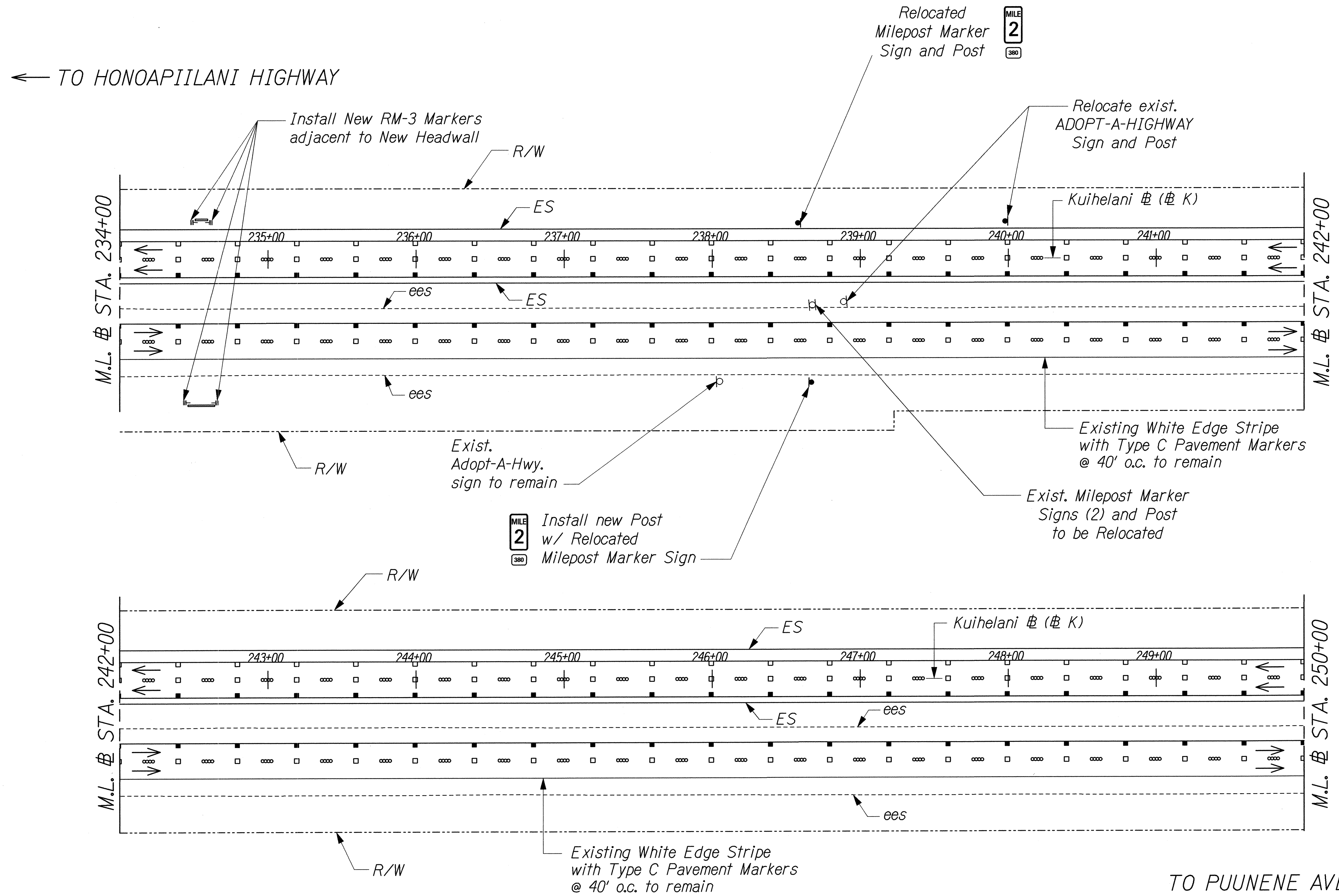
STATE OF HAWAII
DEPARTMENT OF TRANSPORTATION
HIGHWAYS DIVISION

SIGNING AND PAVEMENT MARKINGS

KUIHELANI HIGHWAY WIDENING
HONOAPIILANI HIGHWAY TO PUUNENE AVENUE
FEDERAL-AID PROJECT NO. NH-0380(9)
Scale: 1"=40' Date: Sept. 14, 2001

"AS-BUILT"

FED. ROAD DIST. NO.	STATE	FED. AID PROJ. NO.	FISCAL YEAR	SHEET NO.	TOTAL SHEETS
HAWAII	HAW.	NH-0380(9)	2000	250	380



TRUE NORTH
SCALE: 1" = 40'

TRUE NORTH
SCALE: 1" = 40'

ORIGINAL PLAN	DATE
SURVEY PLOTTED BY	
DRAWN BY	
TRACED BY	
NOTED BY	
QUANTITIES BY	
CHECKED BY	
N.	

J:\KUIHELANI\SIGN\SS-15.dgn

THIS WORK WAS PREPARED BY ME OR UNDER MY SUPERVISION.
Randall M. Urasinski 9/14/01

STATE OF HAWAII
DEPARTMENT OF TRANSPORTATION
HIGHWAYS DIVISION

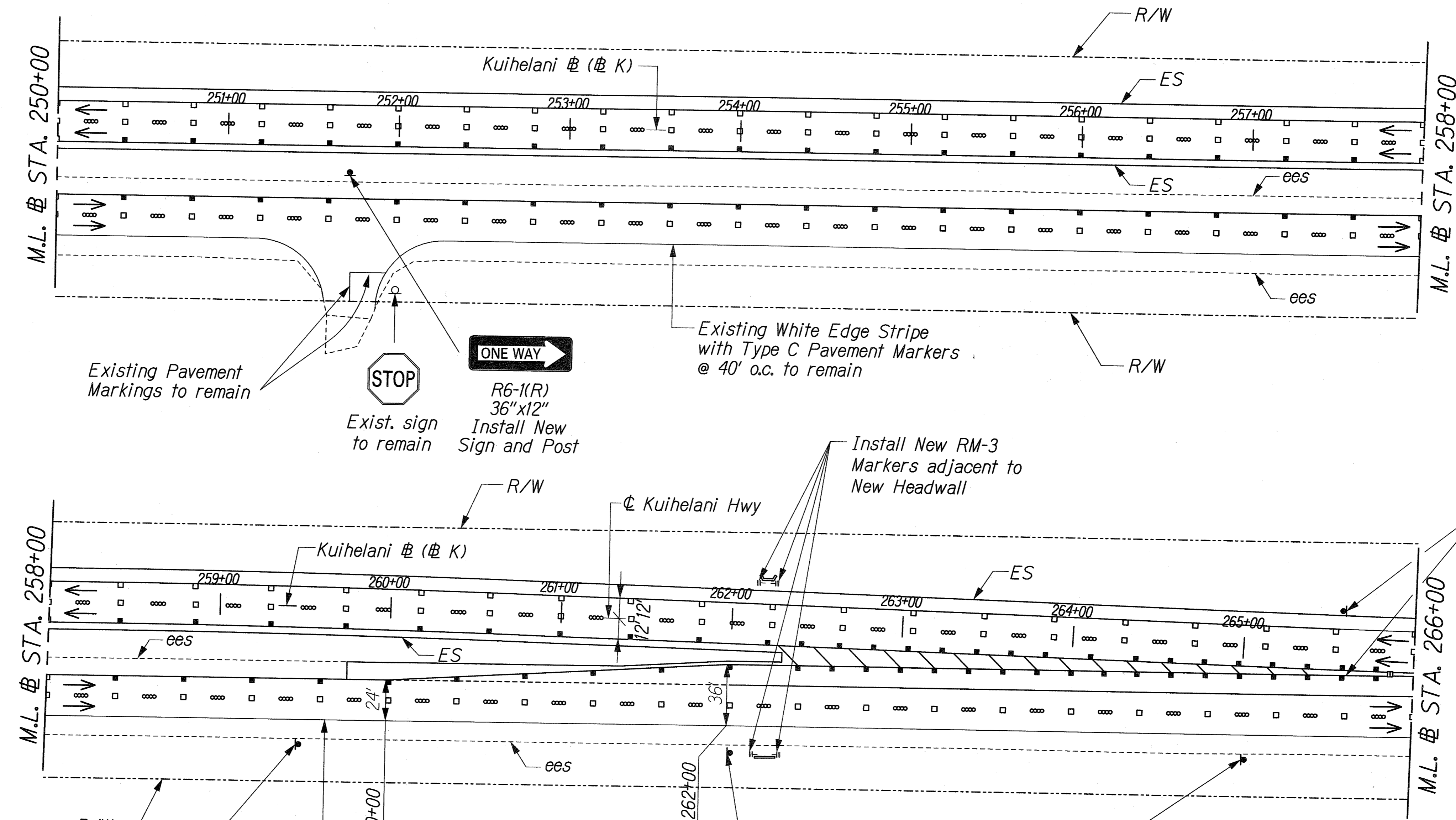
SIGNING AND PAVEMENT MARKINGS

KUIHELANI HIGHWAY WIDENING
HONOAPIILANI HIGHWAY TO PUUNENE AVENUE
FEDERAL-AID PROJECT NO. NH-0380(9)
Scale: 1"=40' Date: Sept. 14, 2001

FED. ROAD DIST. NO.	STATE	FED. AID PROJ. NO.	FISCAL YEAR	SHEET NO.	TOTAL SHEETS
HAWAII	HAW.	NH-0380(9)	2000	251	380

← TO HONOAPIILANI HIGHWAY

TRUE NORTH
SCALE: 1" = 40'



Relocate exist. Sign and Post

UNLAWFUL TO LITTER \$500 FINE

TRUE NORTH
SCALE: 1" = 40'

→ TO PUUNENE AVENUE

SURVEY PLOTTED BY	DATE
DRAWN BY	
DESIGNED BY	
QUANTITIES BY	
CHECKED BY	
ORIGINAL PLAN	
NOTE BOOK	
N.	

\\KUIHELANI\CHANGE ORDER\PAK-AND-RIDE\STGN/SS-16CO.dgn

2/8/02	Revised Pavement Markings from Sta. 258+33.58 to 266+00
Date	Revision

RANDALL M. URASAKI
LICENSED PROFESSIONAL ENGINEER
No. 7269-C
HAWAII, U.S.A.

THIS WORK WAS PREPARED BY ME OR UNDER MY SUPERVISION.
R. M. Urasaki
2/8/02

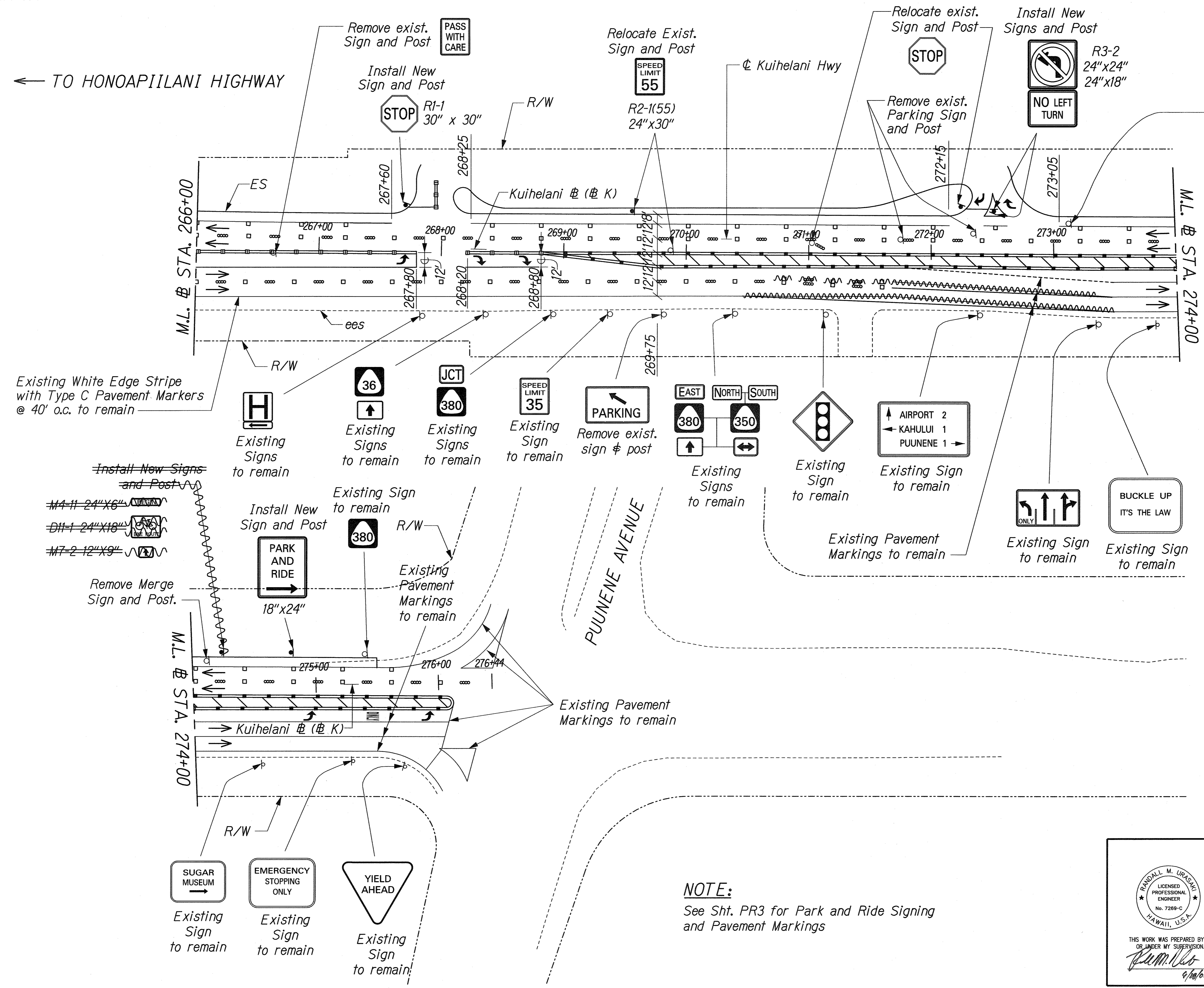
STATE OF HAWAII
DEPARTMENT OF TRANSPORTATION
HIGHWAYS DIVISION

SIGNING AND PAVEMENT MARKINGS

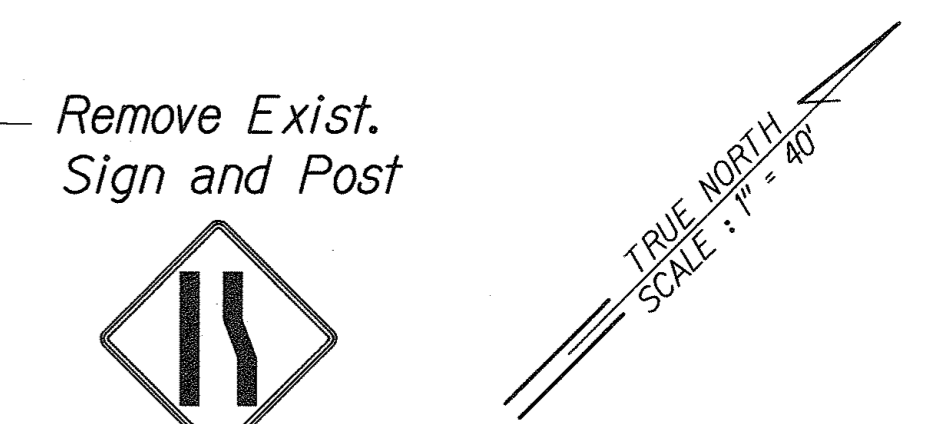
KUIHELANI HIGHWAY WIDENING
HONOAPIILANI HIGHWAY TO PUUNENE AVENUE
FEDERAL-AID PROJECT NO. NH-0380(9)
Scale: 1"=40' Date: Feb. 8, 2002

SHEET No. M17 OF 19 SHEETS

FED. ROAD DIST. NO.	STATE	FED. AID PROJ. NO.	FISCAL YEAR	SHEET NO.	TOTAL SHEETS
HAWAII	HAW.	NH-0380(9)	2000	252	380

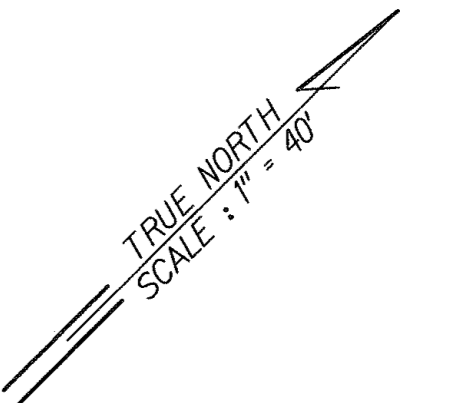


← TO HONOAPIILANI HIGHWAY



Existing White Edge Stripe with Type C Pavement Markers @ 40' o.c. to remain

- ~~M4-11 24"x16"~~
- ~~DH-1 24"x18"~~
- ~~M7-2 12"x9"~~



LEGEND FOR AS-BUILT POSTINGS	
	Squiggly line for as-built deletion
	Double line for as-built deletion
Roadway	Text for as-built posting

Date	Revision
6/26/02	Revised Signs from Sta. 272+00 to 274+00
2/8/02	Revised Pavement Markings, Relocated and Added Signs

THIS WORK WAS PREPARED BY ME OR UNDER MY SUPERVISION.

R.M. Urasak

 6/26/02

STATE OF HAWAII
 DEPARTMENT OF TRANSPORTATION
 HIGHWAYS DIVISION
SIGNING AND PAVEMENT MARKINGS

KUIHELANI HIGHWAY WIDENING
HONOAPIILANI HIGHWAY TO PUUNENE AVENUE
FEDERAL-AID PROJECT NO. NH-0380(9)
 Scale: 1"=40' Date: June 26, 2002

NOTE:
 See Sht. PR3 for Park and Ride Signing and Pavement Markings

SURVEY PLOTTED BY	DATE
DRAWN BY	
TRACED BY	
QUANTITIES BY	
CHECKED BY	
ORIGINAL PLAN	
NOTE BOOK	
No.	

J:\KUIHELANI\CHANGE ORDER\PARK-AND-RIDE\JUN02 REV\SS-7700.dgn

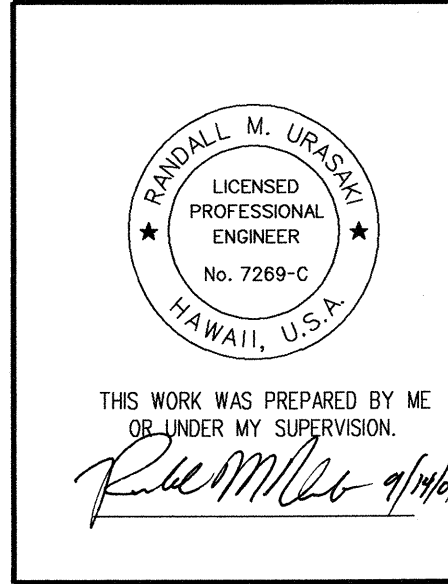
FED. ROAD DIST. NO.	STATE	FED. AID PROJ. NO.	FISCAL YEAR	SHEET NO.	TOTAL SHEETS
HAWAII	HAW.	NH-0380(9)	2000	253	380

PAVEMENT MARKING SUMMARY	
DESCRIPTION	QUANTITY
PAVEMENT MARKERS	
TYPE A	5,500 EA
TYPE C	2,200 EA
TYPE D	120 EA
TYPE H	1,350 EA
TYPE J	90 EA
TAPE, TYPE I OR THERMOPLASTIC EXTRUSION	
4-INCH PAVEMENT STRIPING (WHITE)	3,500 LF
DOUBLE 4-INCH PAVEMENT STRIPING	4,300 LF
TAPE, TYPE II OR THERMOPLASTIC EXTRUSION	
4-INCH PAVEMENT STRIPING (WHITE)	27,000 LF
4-INCH PAVEMENT STRIPING (YELLOW)	48,000 LF
8-INCH PAVEMENT STRIPING	900 LF
TAPE, TYPE III OR THERMOPLASTIC EXTRUSION	
12-INCH PAVEMENT STRIPING	600 LF
CROSSWALK MARKING	8 LANE
PAVEMENT ARROW	6 EA
PAVEMENT WORD	5 EA
PAVEMENT SYMBOL	12 EA

REGULATORY AND WARNING SIGN SUMMARY	
DESCRIPTION	QUANTITY
REGULATORY AND WARNING SIGN (10 SQUARE FEET OR LESS)	28 EA
REGULATORY AND WARNING SIGN (10 SQUARE FEET OR LESS), WITH POST	52 EA
REGULATORY AND WARNING SIGN (GREATER THAN 10 SQUARE FEET), WITH POST	5 EA
RM-4 MOUNTED ON FLEXIBLE DELINEATOR POST	16 EA
STREET NAME SIGN	2 EA
RELOCATE EXISTING SIGN AND POST	19 EA
REMOVE EXISTING SIGN AND POST	26 EA
REMOVE EXISTING SIGN	6 EA
RELOCATE EXISTING RM-3 MARKER AND POST	24 EA
RM-3 MOUNTED ON FLEXIBLE DELINEATOR POST	12 EA
MILEPOST MARKER	1 EA
MILEPOST MARKER WITH POST	3 EA
RELOCATE MILEPOST MARKER	1 EA
RELOCATE MILEPOST MARKER AND POST	5 EA
POST FOR MILEPOST MARKER	1 EA

SURVEY PLOTTED BY _____ DATE _____
 DRAWN BY _____
 TRACED BY _____
 DESIGNED BY _____
 CHECKED BY _____
 ORIGINAL PLAN _____
 NOTE BOOK _____
 No. _____

J:\KUIHELANI\SIGN\SS-SUM.dgn



STATE OF HAWAII
 DEPARTMENT OF TRANSPORTATION
 HIGHWAYS DIVISION
SIGNING & PAVEMENT MARKINGS
SUMMARY
 KUIHELANI HIGHWAY WIDENING
 HONOAPIILANI HIGHWAY TO PUUNENE AVENUE
 FEDERAL-AID PROJECT NO. NH-0380(9)
 Scale: None Date: Sept. 14, 2001