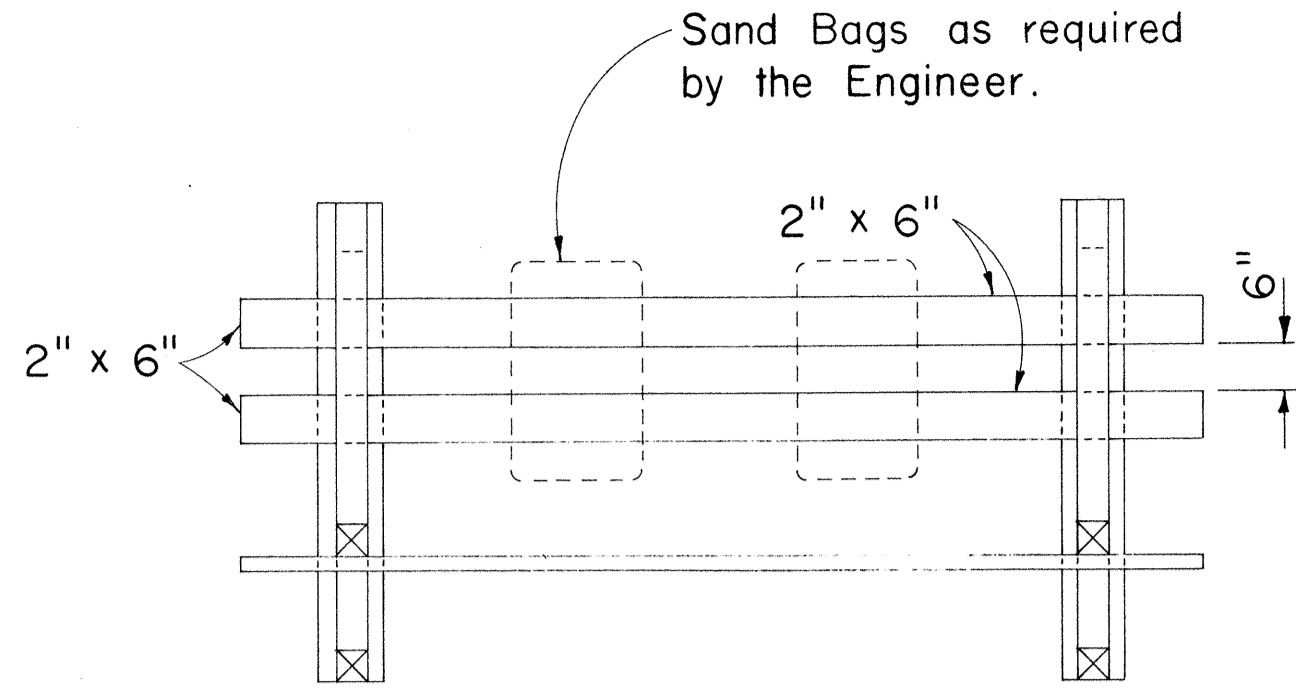
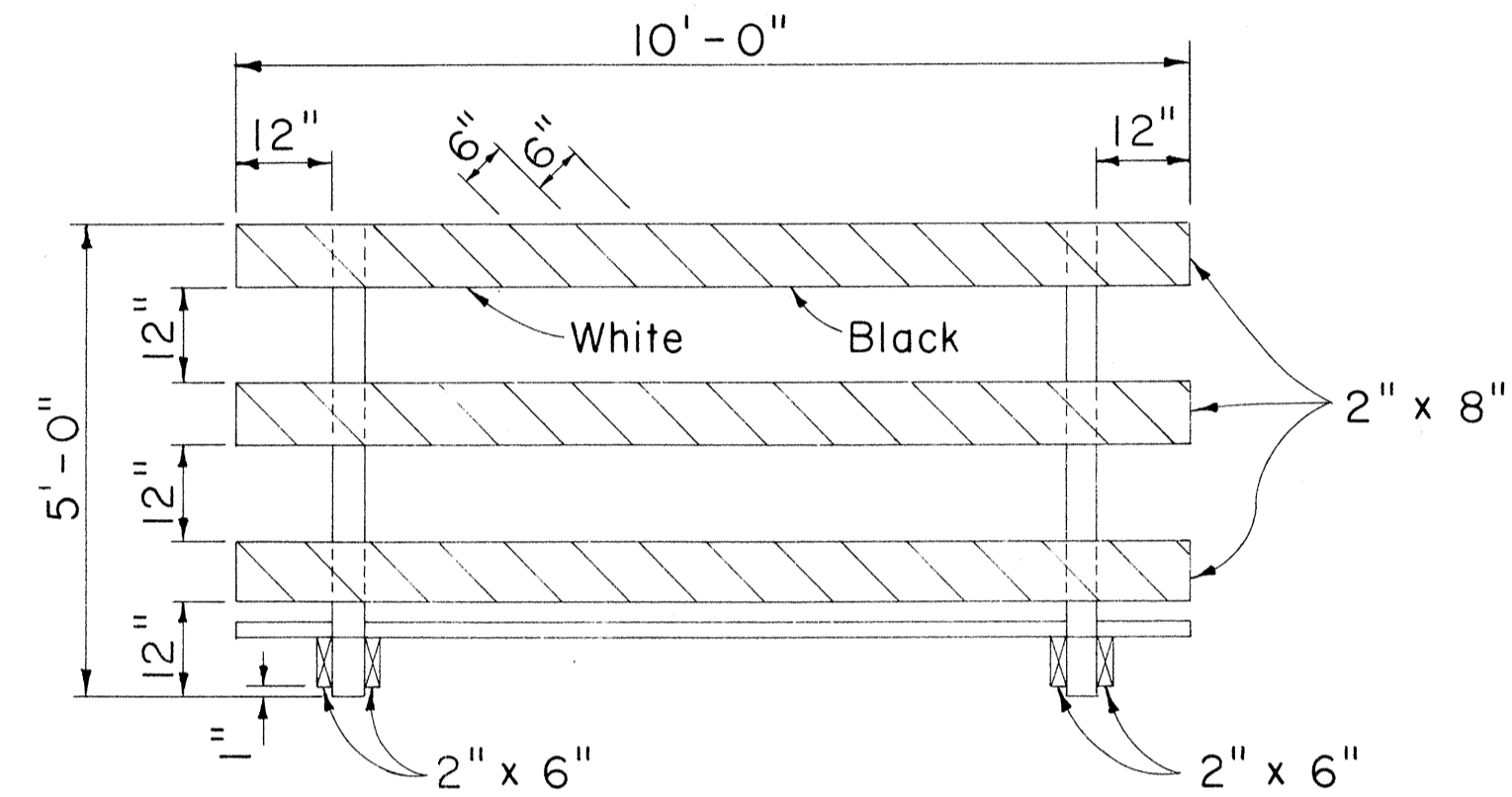


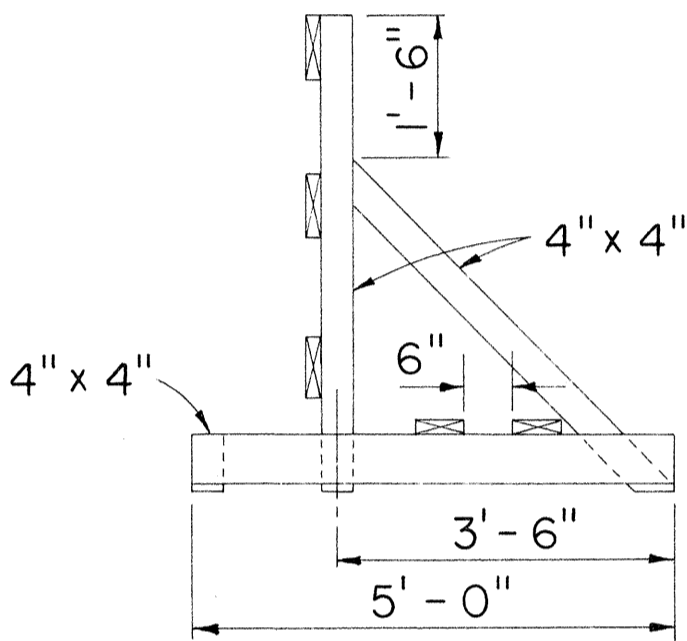
FED. ROAD DIST. NO.	STATE	FED. AID PROJ. NO.	FISCAL YEAR	SHEET NO.	TOTAL SHEETS
HAWAII	HAW.	5-0380(6)	1969	20	87



PLAN VIEW



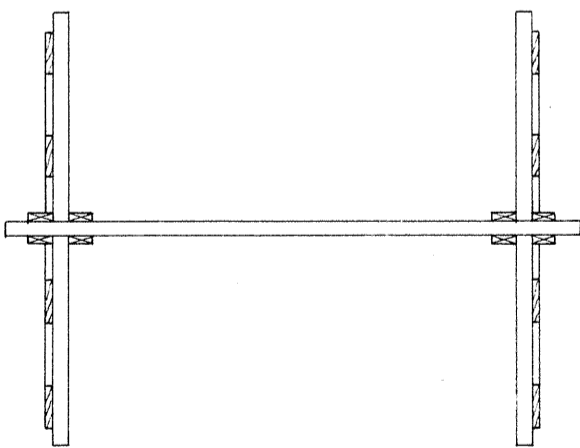
FRONT VIEW



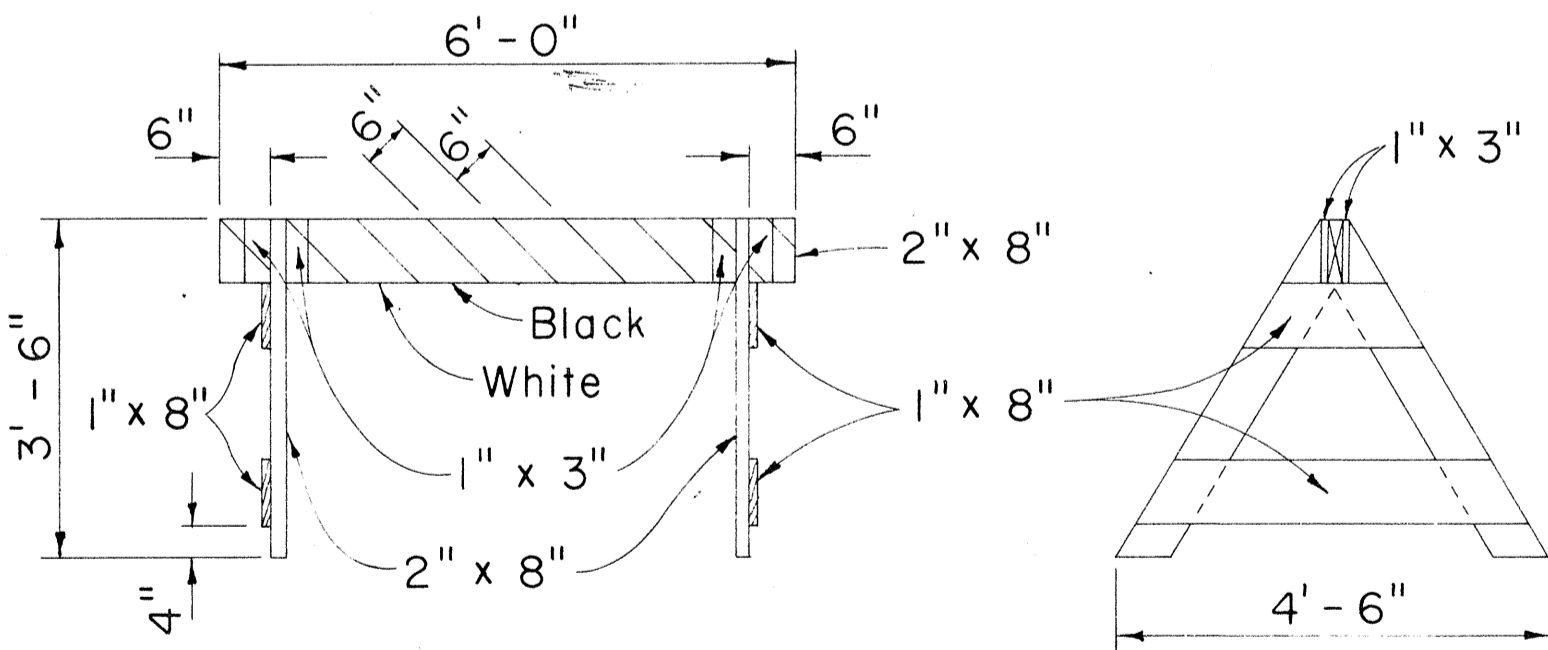
END VIEW

CLASS I BARRICADE

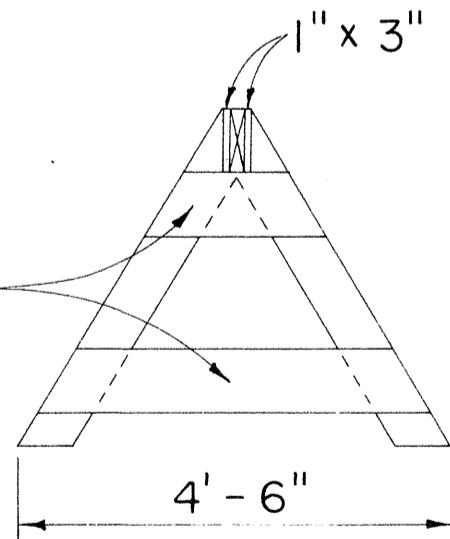
Scale: 1/2" = 1'-0"



PLAN VIEW



FRONT VIEW



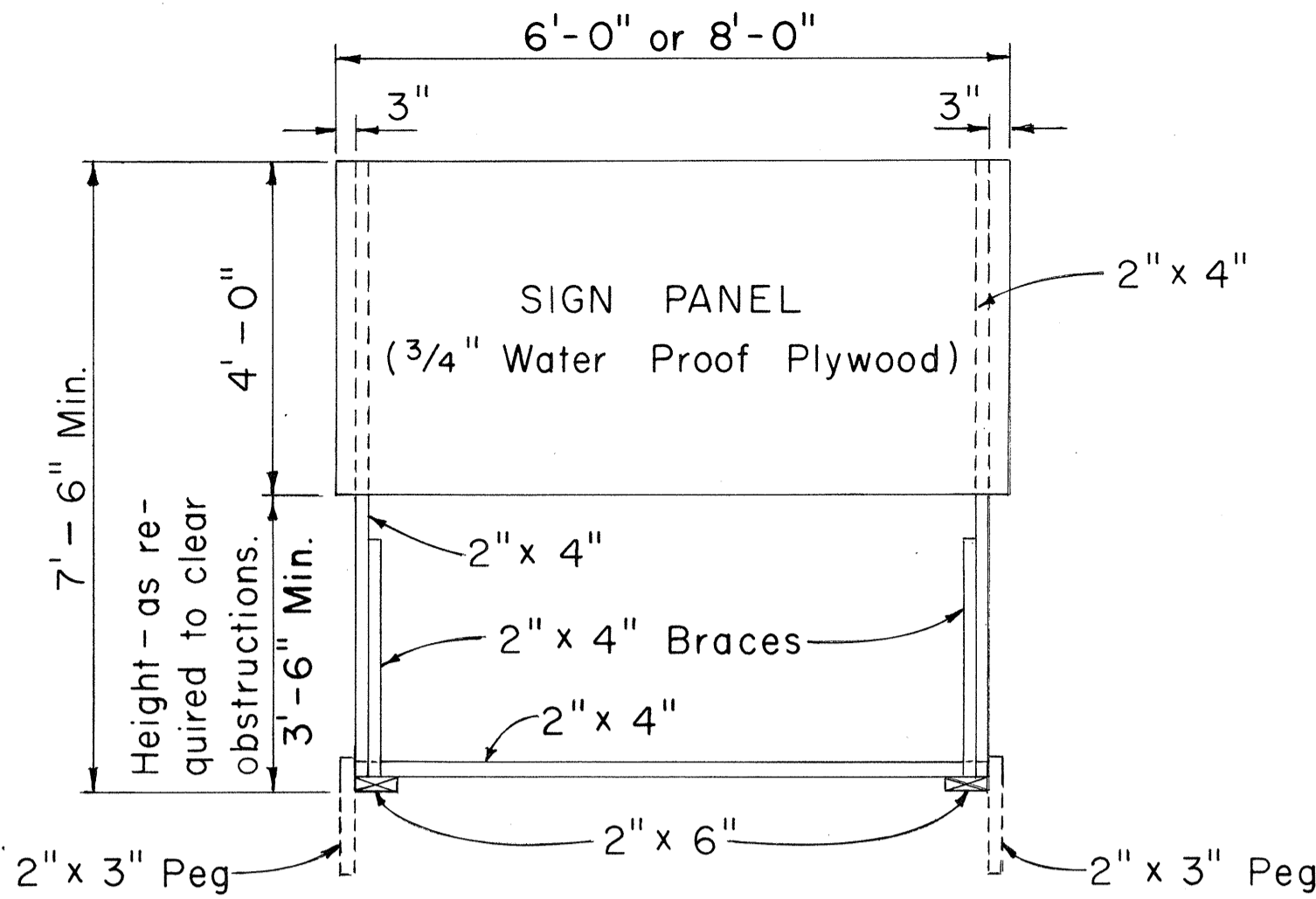
END VIEW

CLASS II BARRICADE

Scale: 1/2" = 1'-0"

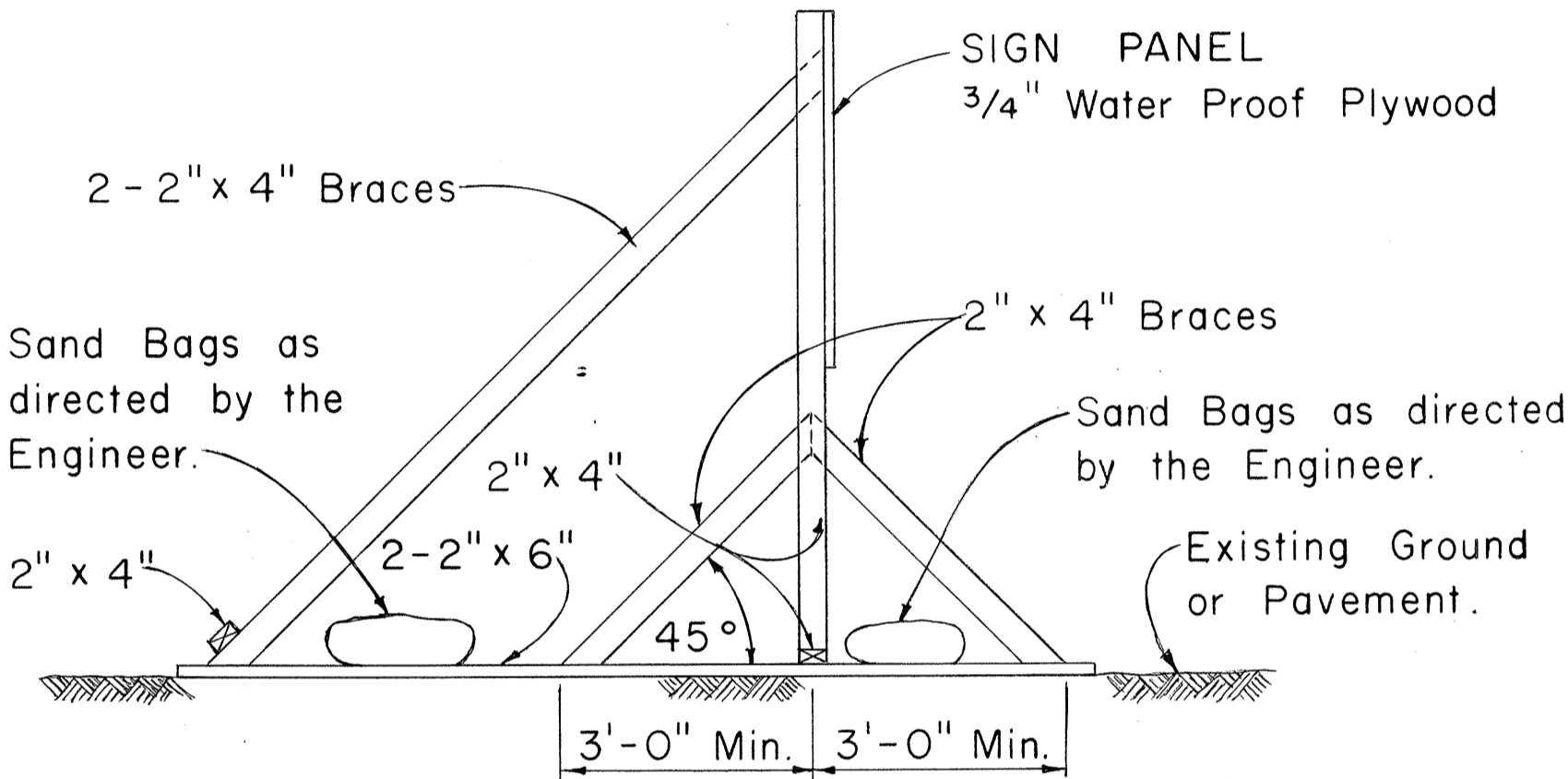
GENERAL NOTES

1. The Contractor shall construct, install and maintain the wood barricades at the locations shown on the Plans.
2. The permanent wood barricades shall be left in place or relocated upon completion of the project as ordered by the Engineer and are to become State property.



FRONT VIEW

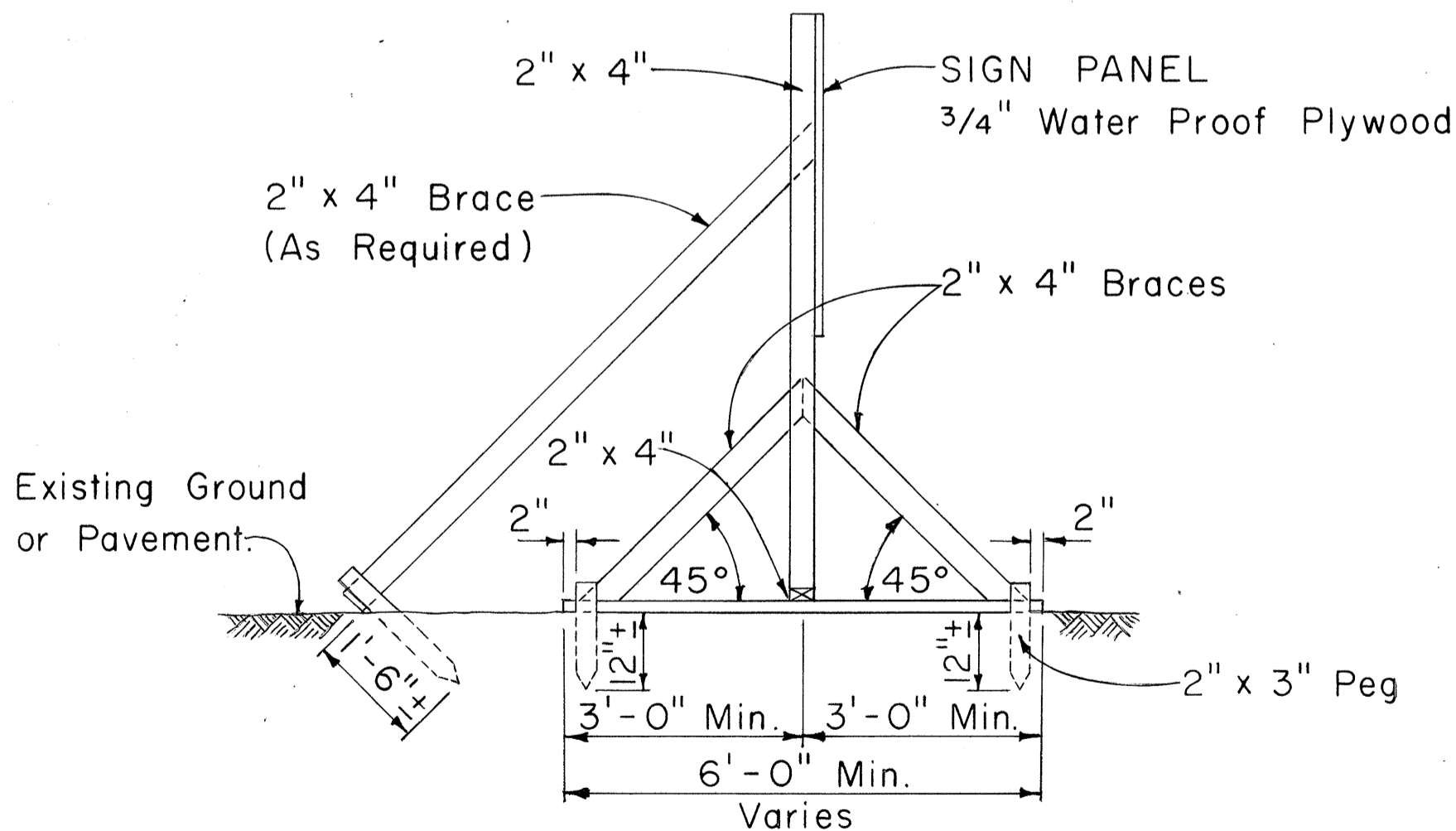
Scale: 1/2" = 1'-0"



SIDE VIEW

(SIGN FRAME WEIGHTED DOWN)

Scale: 1/2" = 1'-0"



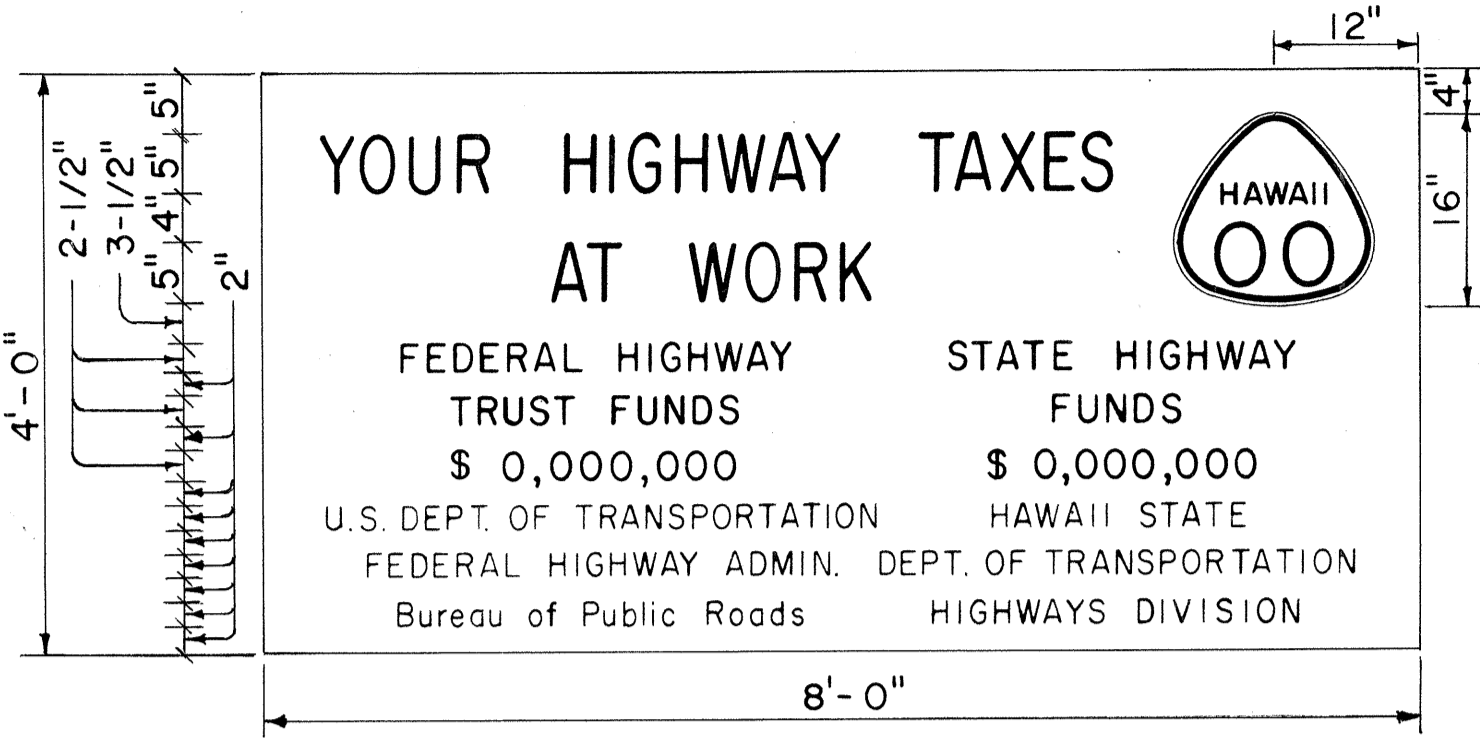
SIDE VIEW

(SIGN FRAME ANCHORED IN GROUND)

Scale: 1/2" = 1'-0"

CONSTRUCTION IDENTIFICATION SIGN

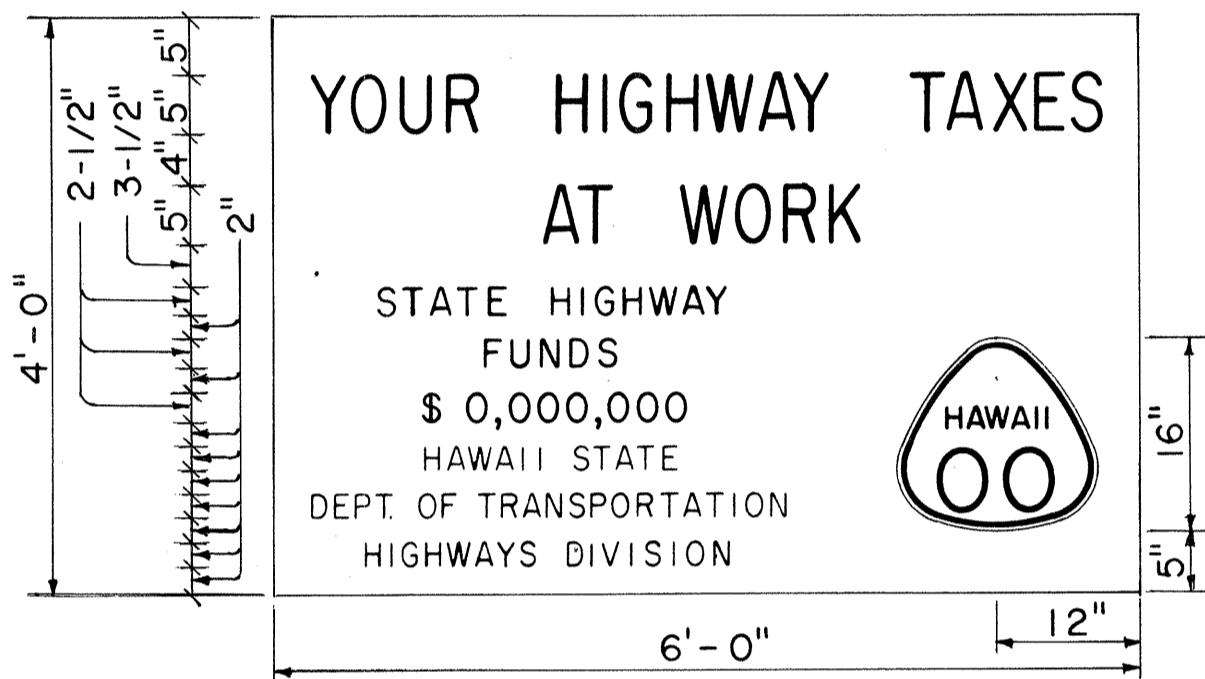
Scale: As Shown



SIGN PANEL

PRIMARY AND SECONDARY SYSTEMS

Scale: 3/4" = 1'-0"



SIGN PANEL

NON-FEDERAL AID PROJECT

Scale: 3/4" = 1'-0"

GENERAL NOTES

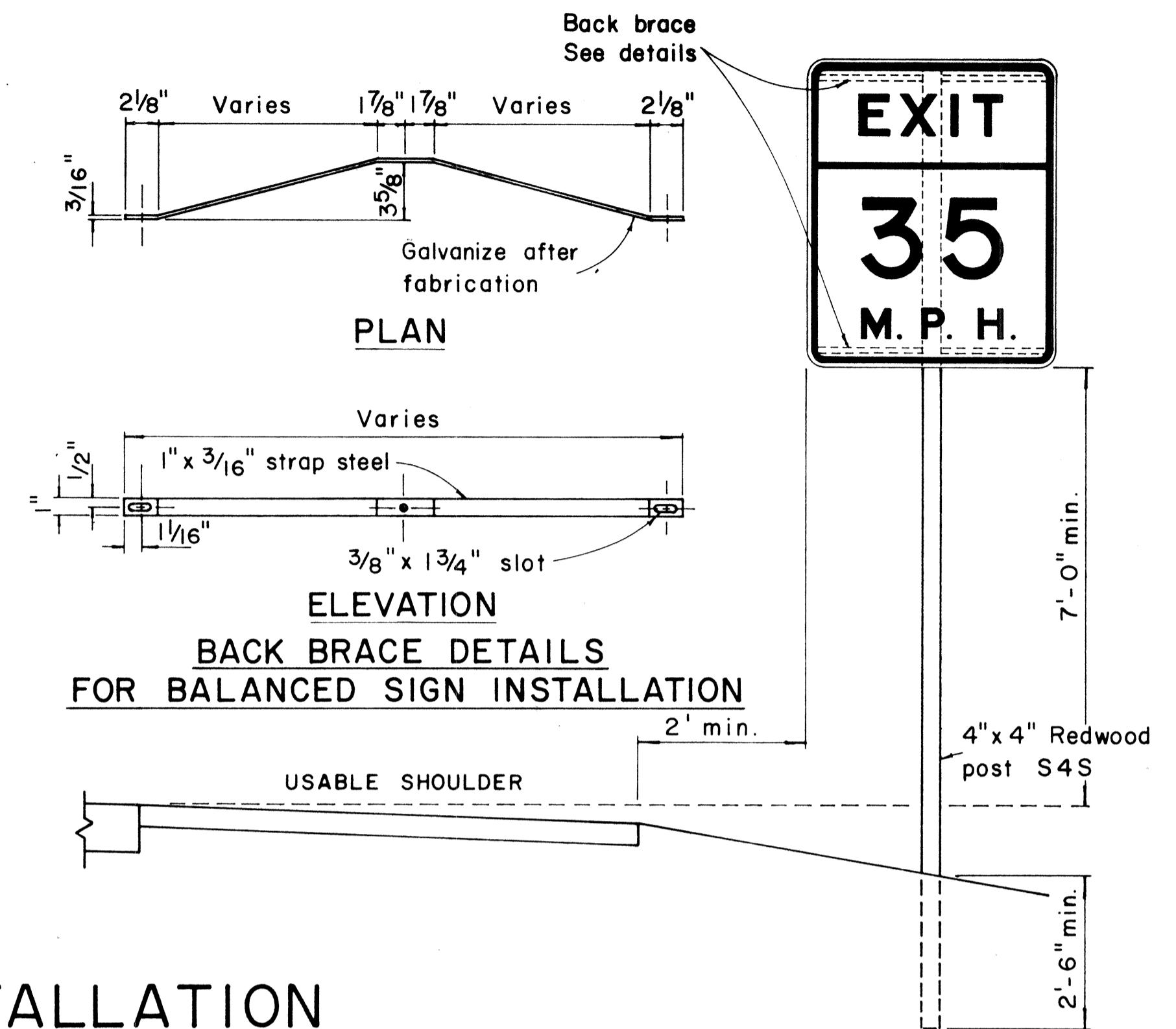
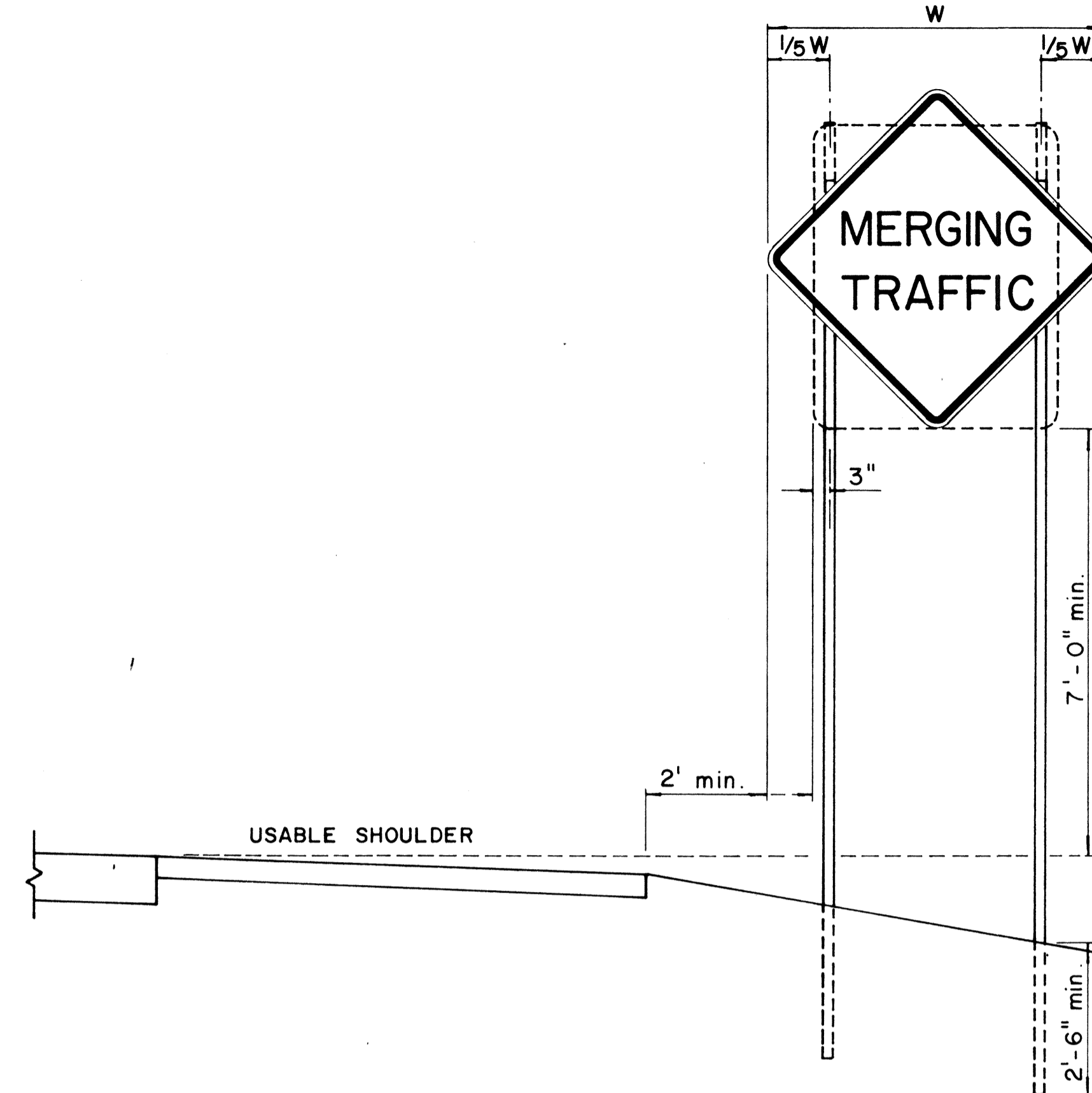
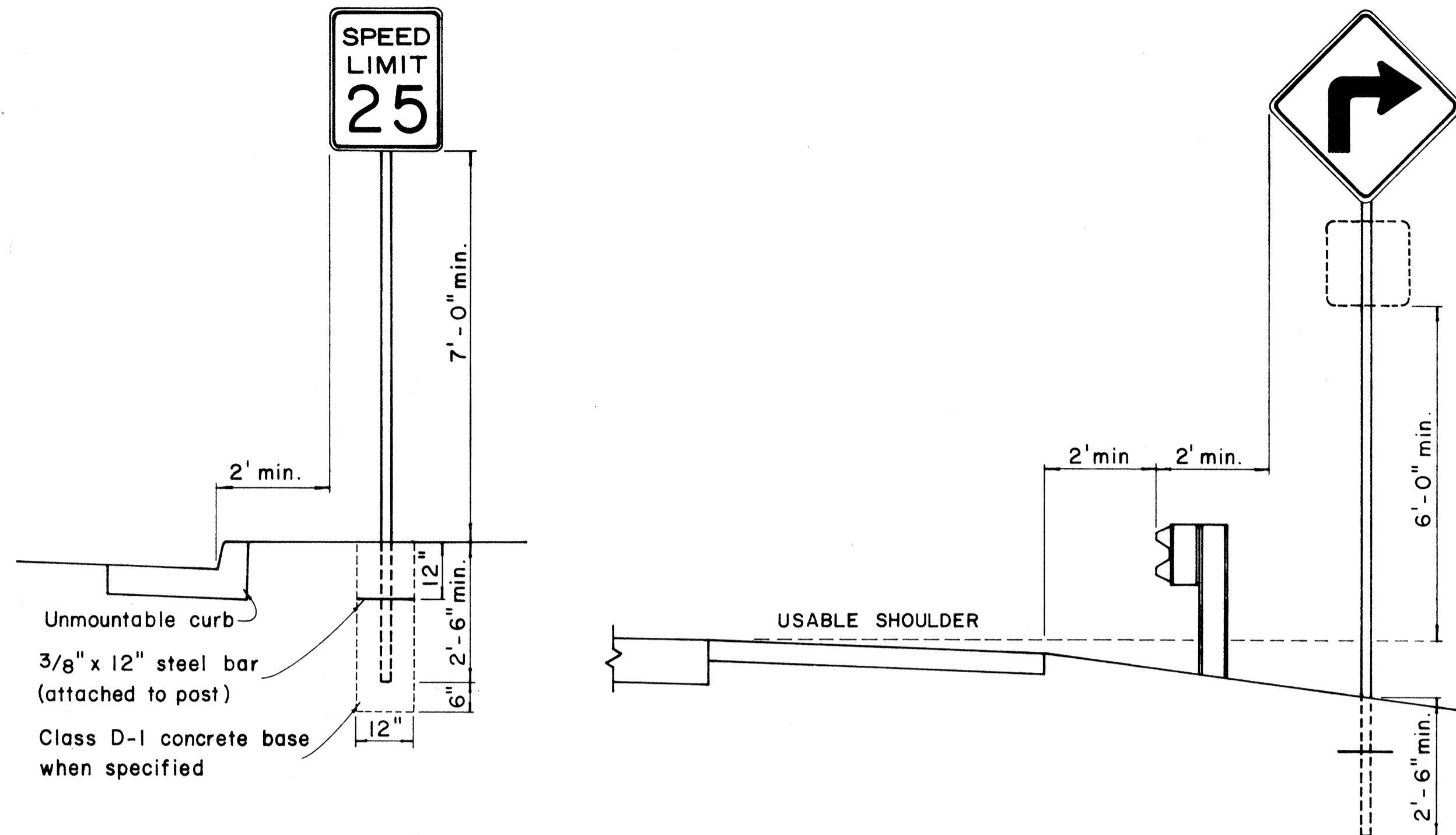
1. The sign legend shall be black on white background.
2. The Contractor shall construct, install and maintain the project signs at the locations shown on the plans and as ordered by the Engineer.
3. Letters shall be Series "C" of the sizes shown on the plan and shall conform with the "Standard Alphabet for Highway Signs", Bureau of Public Roads, 1966
4. The Contractor shall fill in the proper numerals in place of ciphers as ordered by the Engineer.

STATE OF HAWAII
DEPARTMENT OF TRANSPORTATION
HIGHWAYS DIVISION
TYPICAL DETAILS
CONSTRUCTION IDENTIFICATION SIGN
AND
WOOD BARRICADES

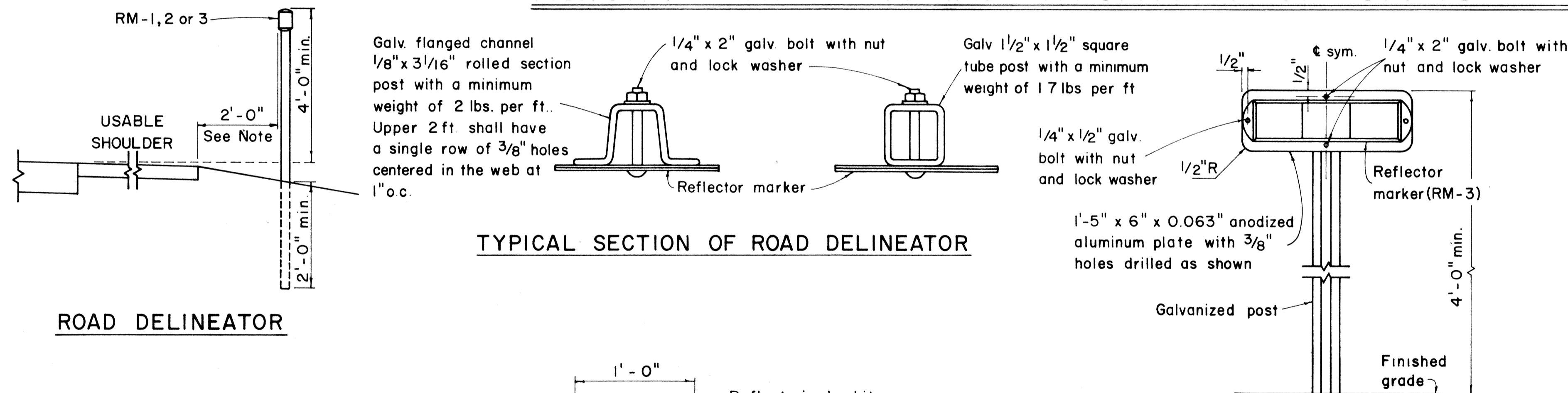
Scale: As Shown Date:

SHEET No. 1 OF 3 SHEETS

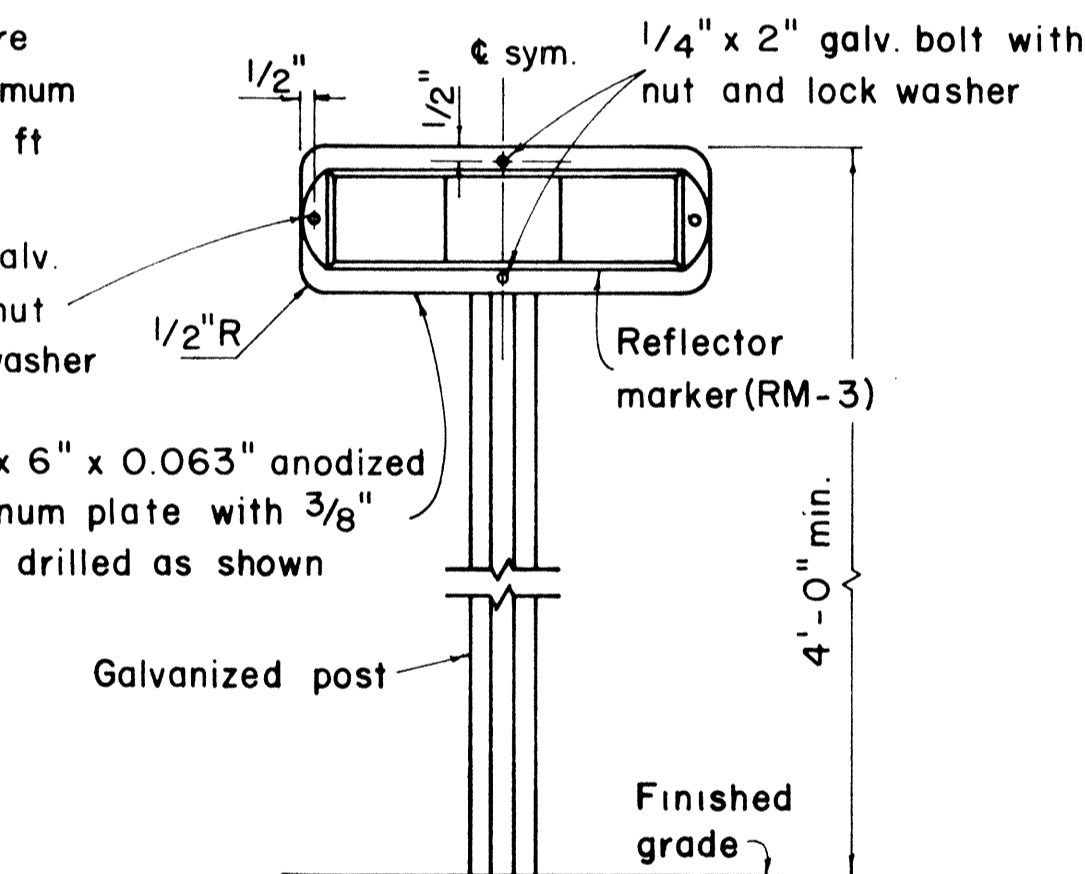
FED. ROAD DIST. NO.	STATE	FED. AID PROJ. NO.	FISCAL YEAR	SHEET NO.	TOTAL SHEETS
HAWAII	HAW.	5-0380(6)	1967	21	87



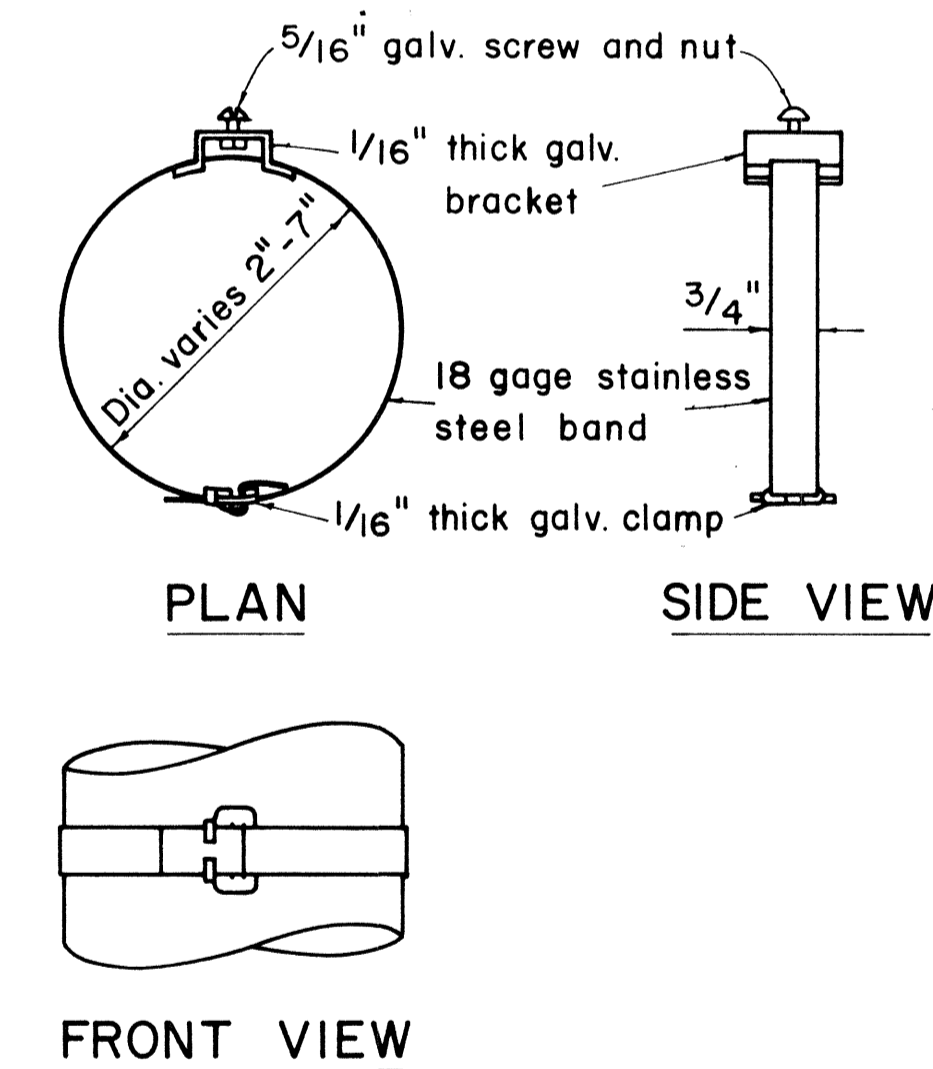
HEIGHT AND LATERAL LOCATION OF SIGNS - TYPICAL INSTALLATION



TYPICAL SECTION OF ROAD DELINEATOR



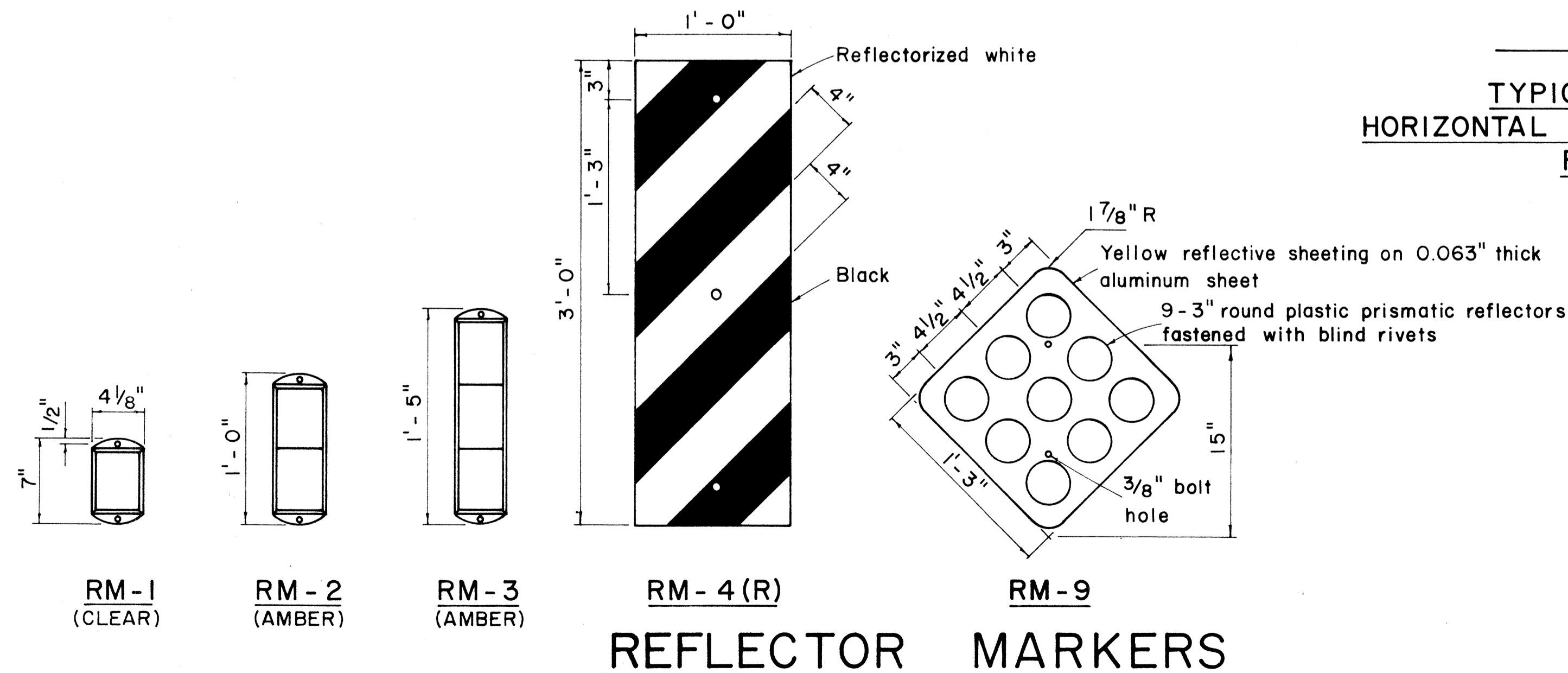
TYPICAL DETAIL
HORIZONTAL REFLECTOR MARKER
RM-3H



TYPICAL BAND BRACKET FOR
MOUNTING TRAFFIC SIGNS

GENERAL NOTES:

- Sign posts shall be 2" galv. standard pipe or 2" x 2" galv. sq. tube post.
- Signs 48" and wider or larger than 10 sq. ft. in area shall be mounted on two 2" galv. standard pipe or two 2" x 2" galv. sq. tube post or 4" x 4" redwood post S4S.
- Signs shall be attached to post with 5/16" galv. bolts with nuts and 7/8" x 0.06 stainless steel washers with neoprene rubber gasket.
- Sign posts shall extend 3 1/2" above sign where required for City and County street name signs.
- Reflector markers RM-1, 2, 3 shall be glass sphere reflector markers with 4" x 5" reflector units (as shown) or plastic prismatic reflector markers with 3" diameter reflector units.
- Clearance markers (RM-3, RM-4) shall be installed with the edge of the marker in line with the inner edge of the obstruction.
- (R) or (L) indicates right or left and shall be as shown on the plans.



REFLECTOR MARKERS

STATE OF HAWAII DEPARTMENT OF TRANSPORTATION HIGHWAYS DIVISION
STANDARD DETAILS MISCELLANEOUS SIGN DETAILS
Not to scale March, 1968
SHEET No. 2 OF 3 SHEETS DT 100

