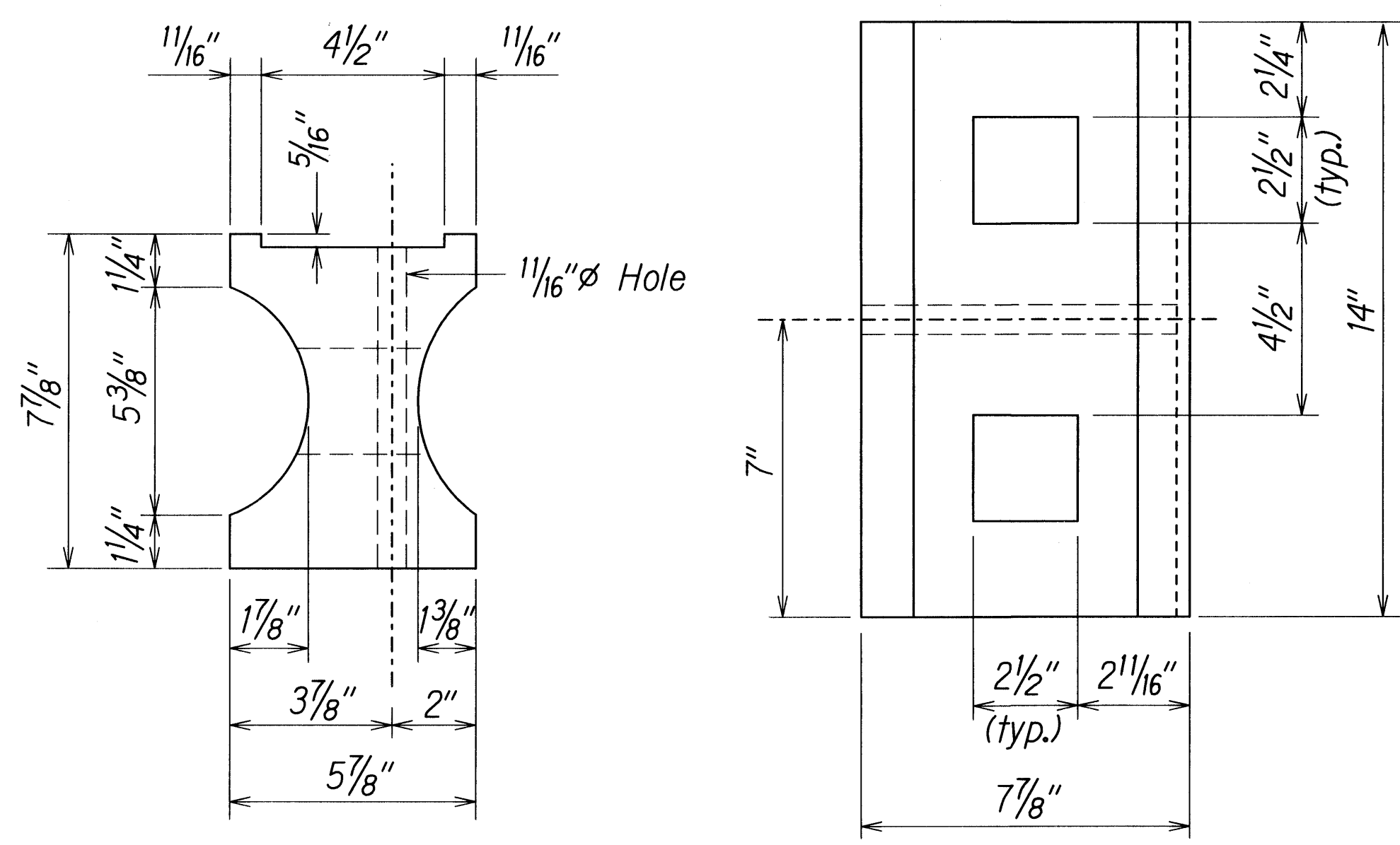


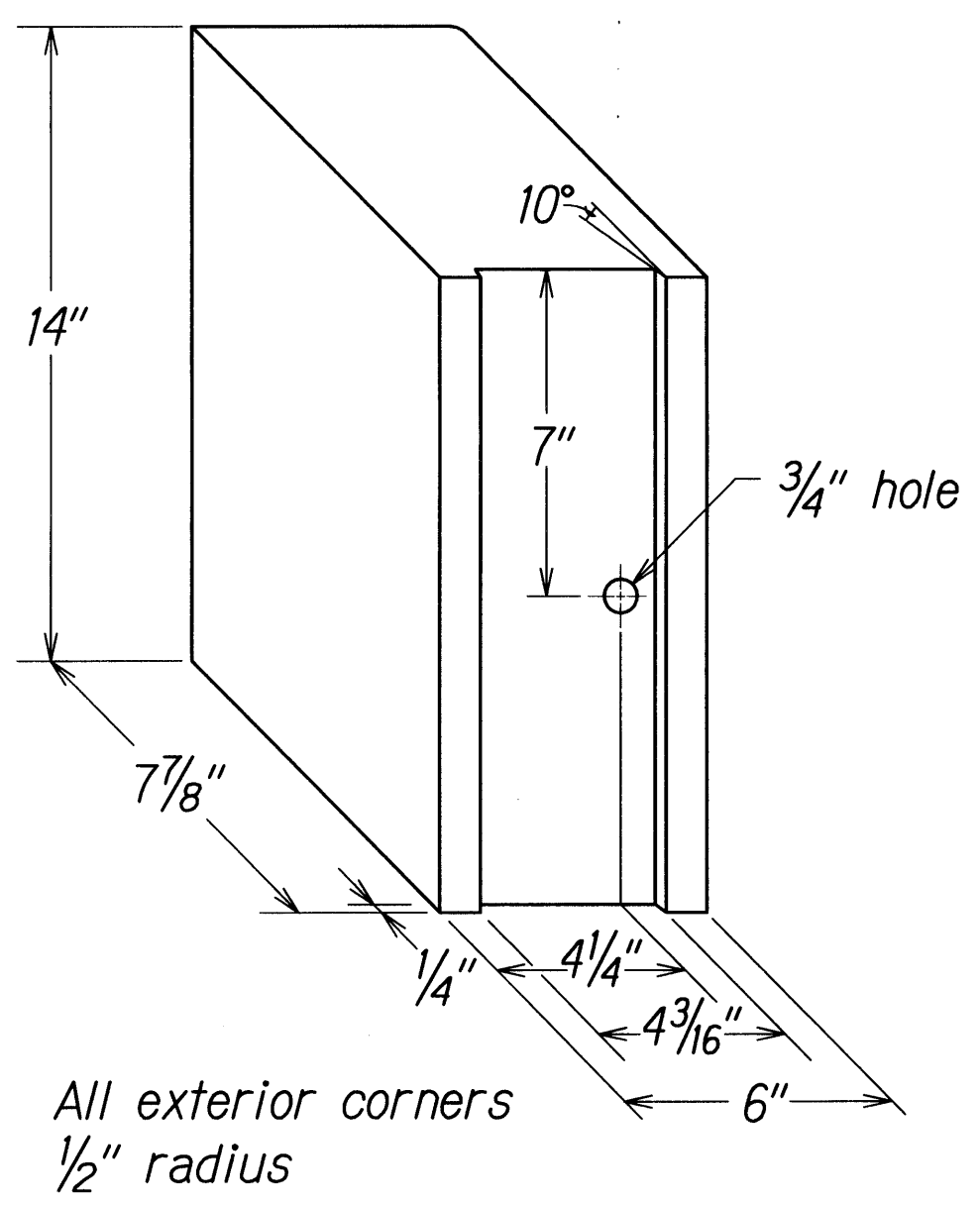
FED. ROAD DIST. NO.	STATE	FED. AID PROJ. NO.	FISCAL YEAR	SHEET NO.	TOTAL SHEETS
HAWAII	HAW.	STP-0378(003)	2011	8	21

GENERAL NOTES

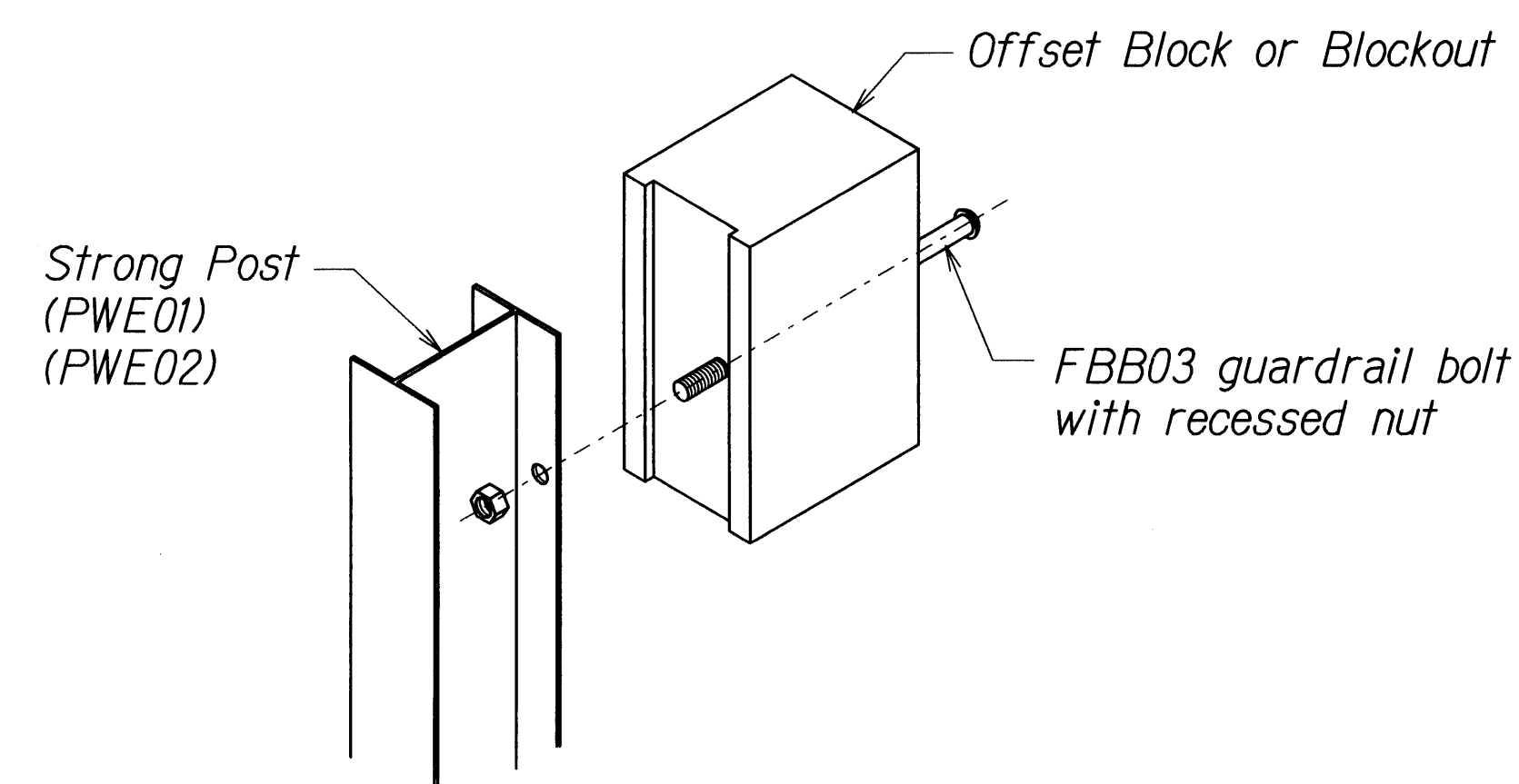
1. All hardware, posts and fasteners shall be hot-dip zinc coated galvanized after fabrication. No punching, drilling or cutting will be permitted after galvanizing.
2. Where conditions require, special post lengths in increments of 6 inches may be specified.
3. All fasteners, posts, and rail elements (i.e. FBB03, PWE01, RWM02b, etc.) shall conform to the latest edition and amendments of "A Guide to Standardized Highway Barrier Rail Hardware", a report prepared and approved by the AASHTO-AGC-ARTBA Joint Cooperative Committee, Subcommittee On New Highway Materials, Task Force 13 Report. Dimensions of fastners, posts and rail elements have been converted from metric units into their present form.
4. The Recycled Plastic Block or Offset Block shall be approved by the State.
5. All new guardrail systems (system consists of total length of guardrail including both end treatments) shall include the Additional Paved Area.
6. After the guardrail posts are installed in the paved area, the Contractor shall fill/seal around each guardrail post and all cracks in the paved area caused during the guardrail post installation. If required by the inspector/engineer, the Contractor shall tamper the paved area around the guardrail post prior to filling/sealing. All costs associated with this work shall not be paid for separately, but shall be considered incidental to the various guardrail items.
7. When standards for the fill slope area cannot be met, a site specific, engineer approved design may be used.
8. New A.C. pavement at guardrails shall extend 6 feet longitudinally beyond terminal ends.
9. Reflector Markers (RM-5) mounted on guardrails shall be spaced every 25 feet. Spacing of RM-5's on Horizontal Curves shall comply with Table III-1 of the MUTCD. RM-5's shall not be installed on Terminal Sections. RM-5 on new guardrail shall be incidental to guardrail pay item.



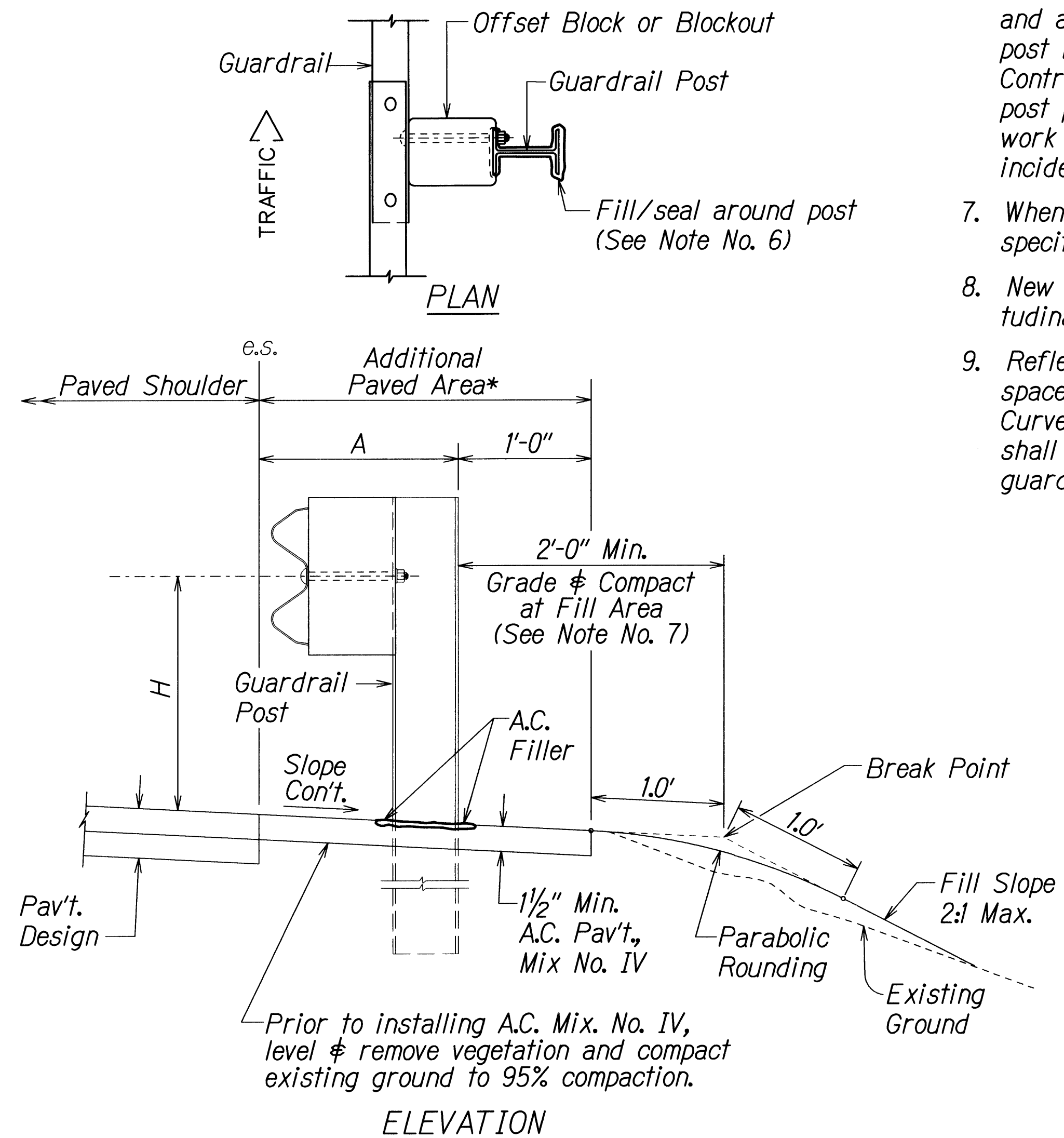
TOP
SIDE
RECYCLED PLASTIC BLOCKOUT (TYPE I)



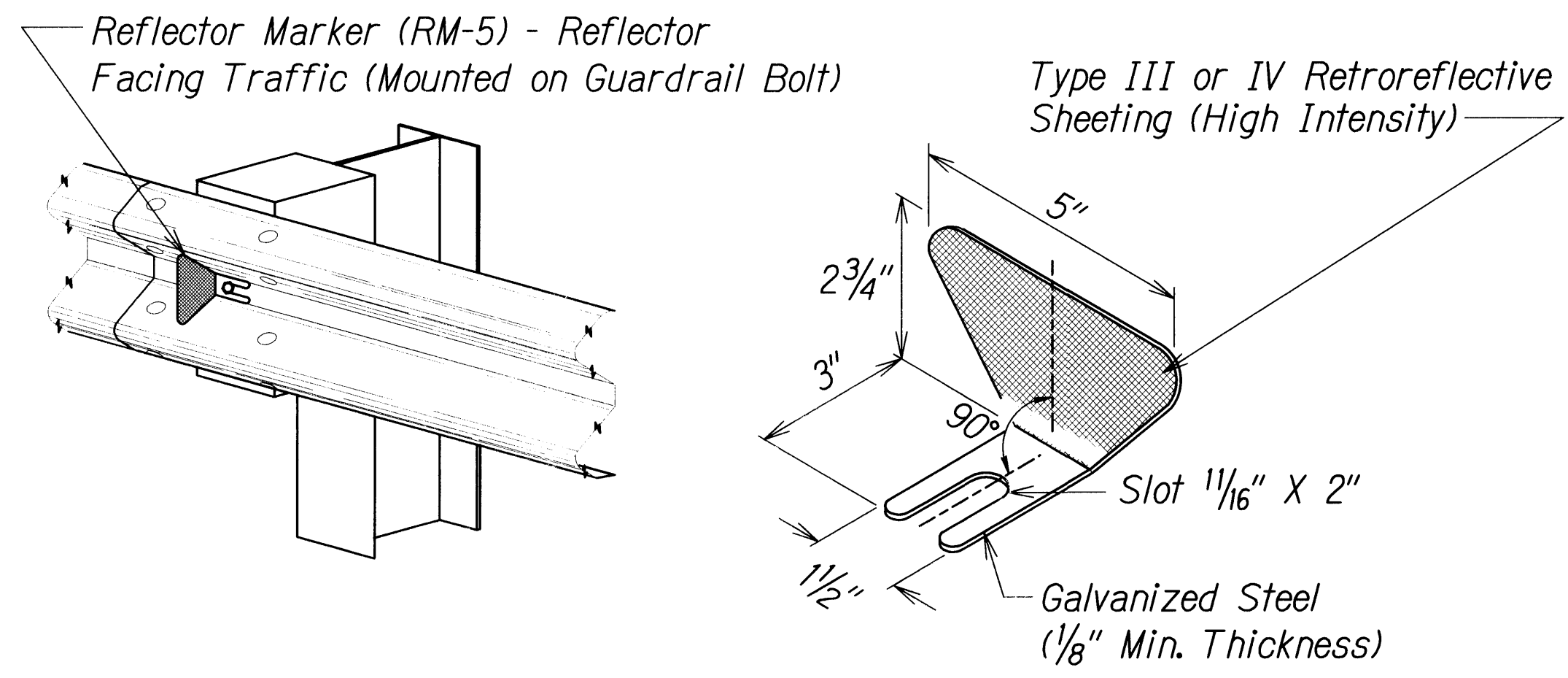
RECYCLED POLYETHYLENE
OFFSET BLOCK (TYPE II)



Exploded View
(Rail and washer not shown)
STEEL POST AND BLOCK DETAIL



TYPICAL GUARDRAIL INSTALLATION



REFLECTOR MARKER (RM-5) DETAIL AND TYPICAL INSTALLATION

GUARDRAIL TYPE	DIMENSION	
	H	A
Strong Post W-Beam	1'-9 5/8"	1'-6"
Strong Post Rubrail (W-Beam)	2'-0"	1'-6"
Modified or Strong Post Thrie Beam	2'-0"	2'-0"

STATE OF HAWAII
DEPARTMENT OF TRANSPORTATION
HIGHWAYS DIVISION

GUARDRAIL DETAILS & NOTES
HALEAKALA CRATER ROAD PAVEMENT
PREVENTIVE MAINTENANCE
M.P. 0.00 to M.P. 2.00
Federal-Aid Project No. STP-0378(003)

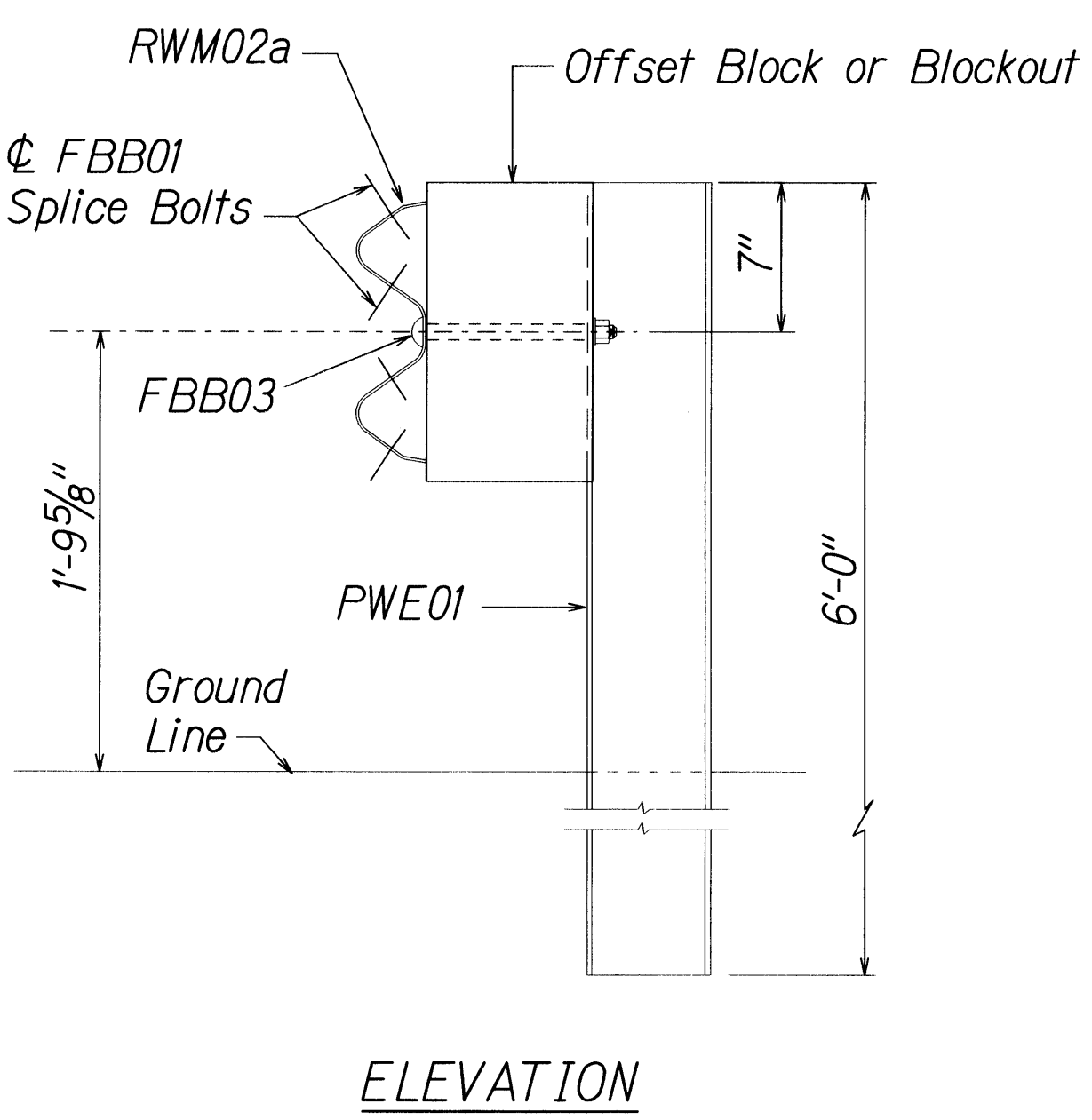
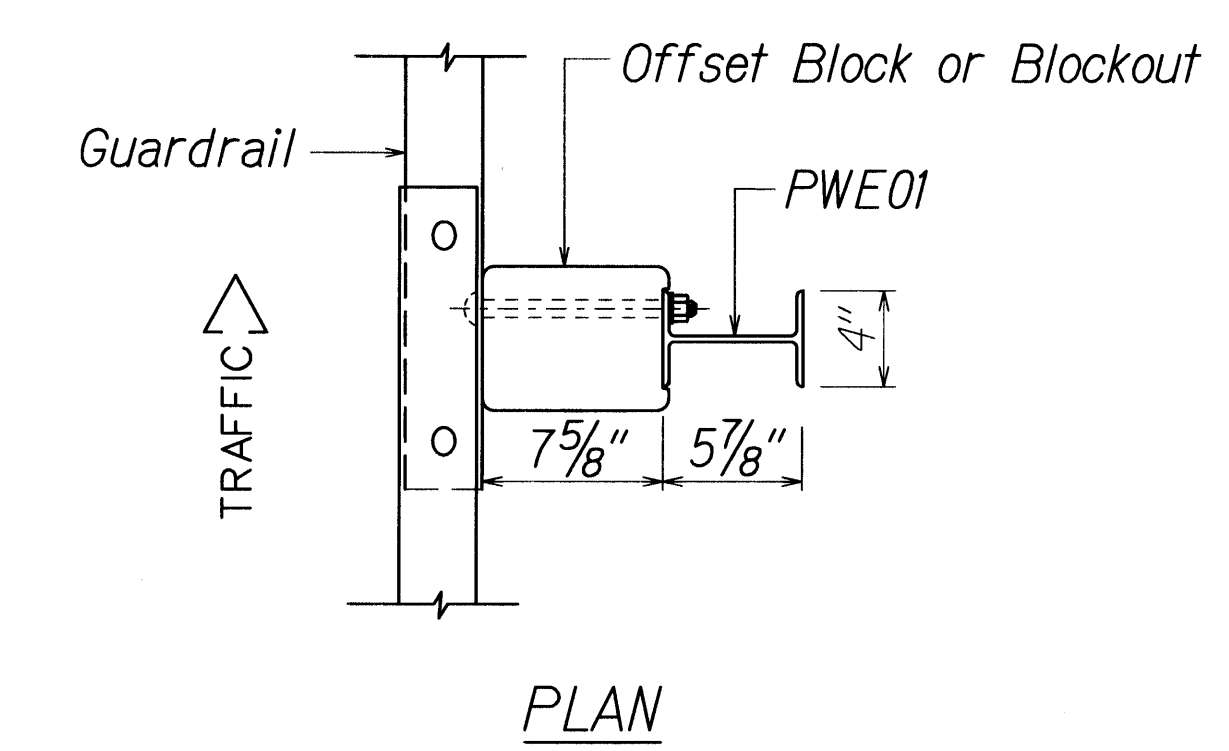
Scale: NTS
Date: March, 2011

SHEET No. 1 OF 2 SHEETS

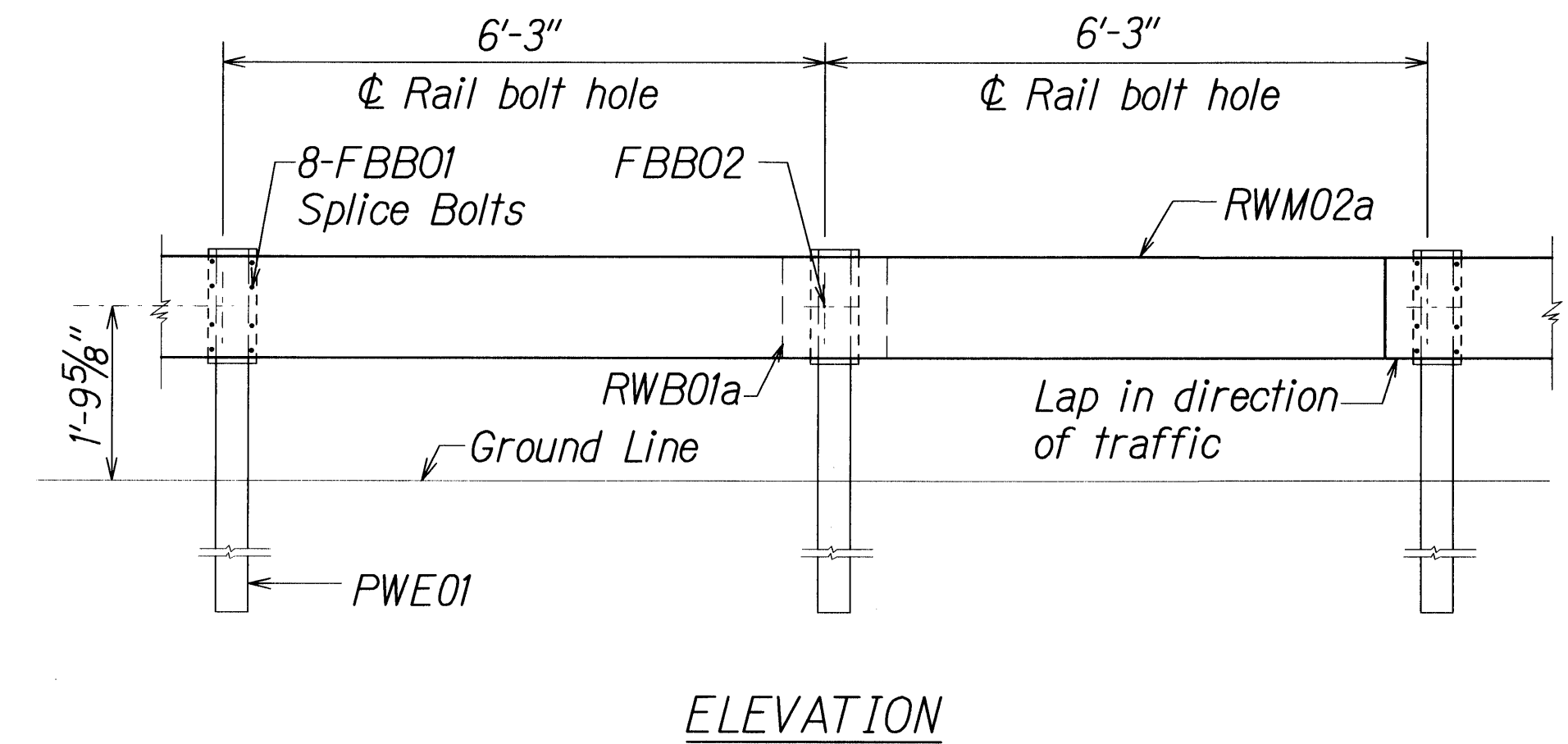
SURVEY PLOTTED BY	DATE
DESIGNED BY	
TRACED BY	
NOTE BOOK	
QUANTITIES BY	
CHECKED BY	

18-21/01 1d1ub/guardrail/165/Drawn (standard plan TE-50 109-01/00)

FED. ROAD DIST. NO.	STATE	FED. AID PROJ. NO.	FISCAL YEAR	SHEET NO.	TOTAL SHEETS
HAWAII	HAW.	STP-0378(003)	2011	9	21

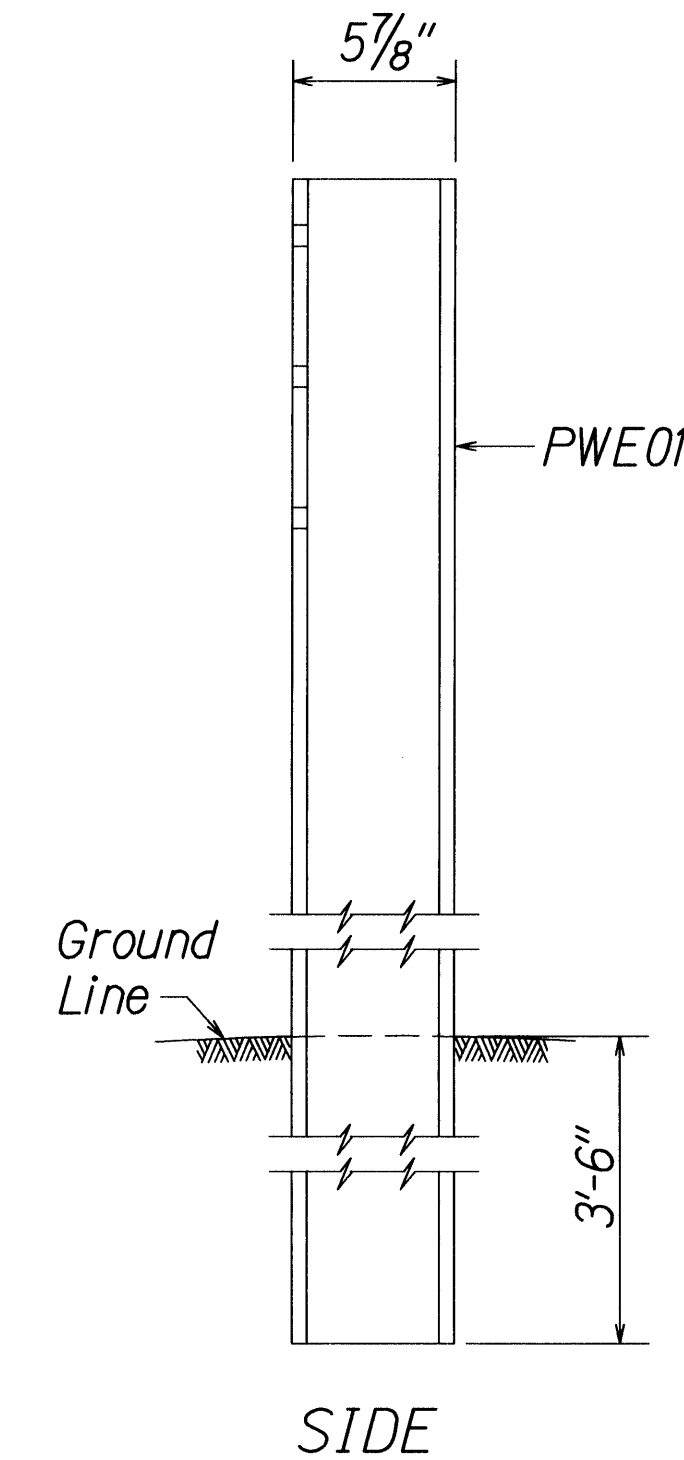


STRONG POST W-BEAM GUARDRAIL (SGR04a)

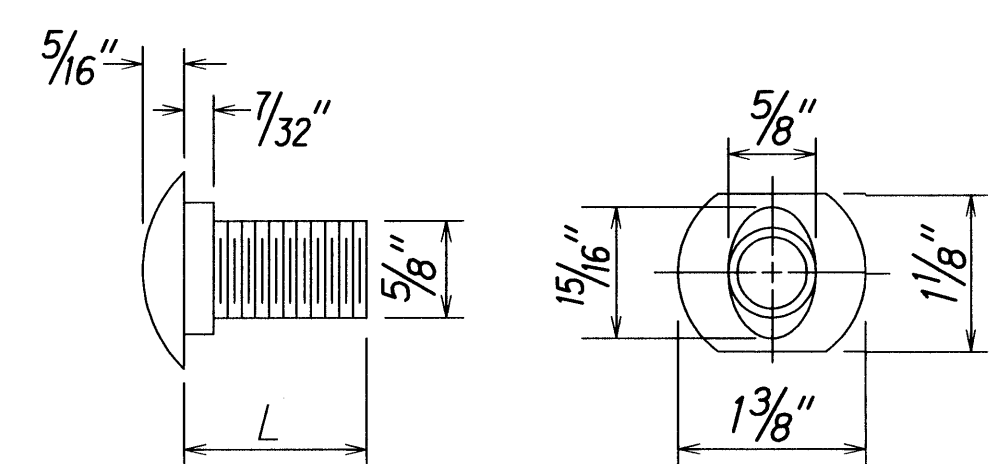
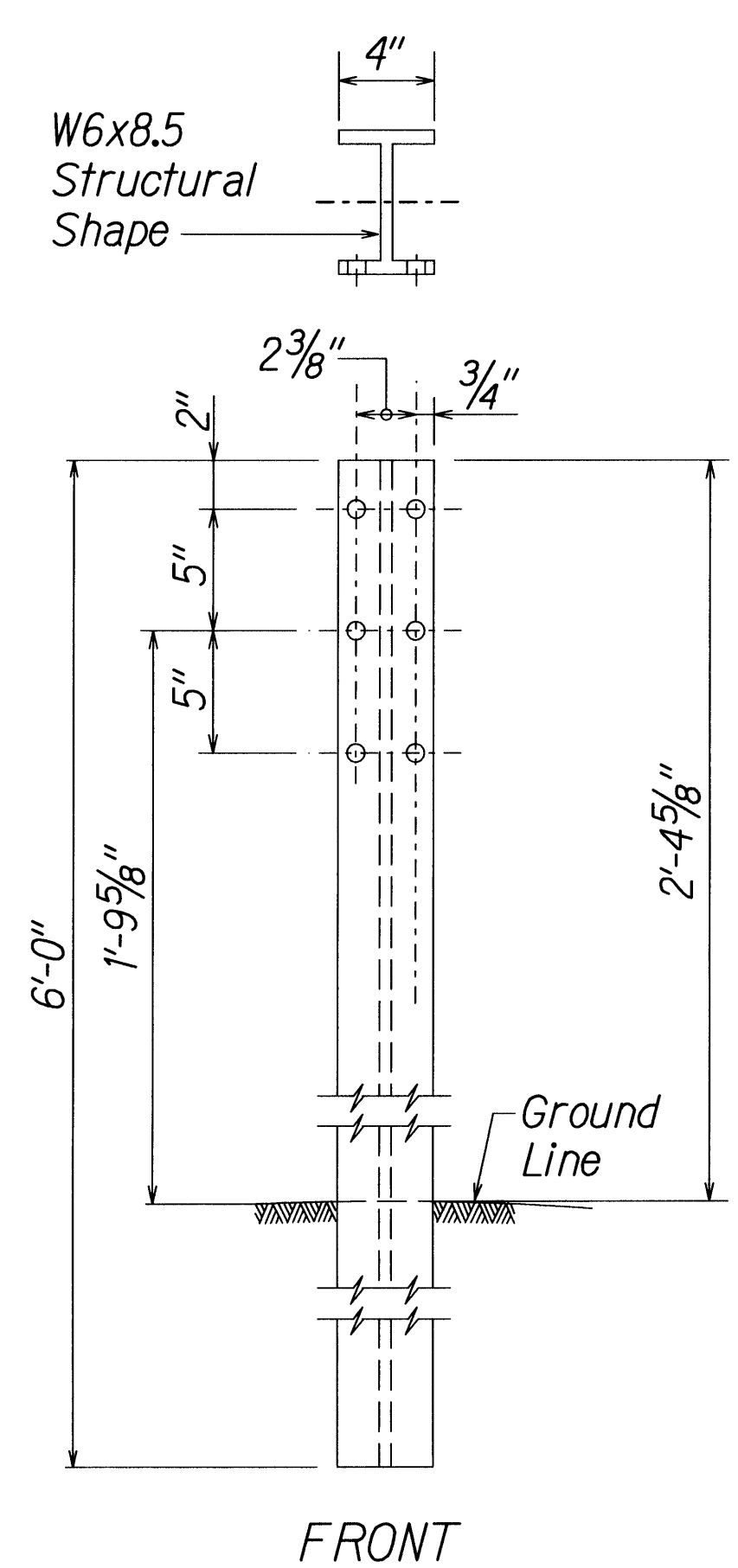


STRONG POST W-BEAM GUARDRAIL WITH RECYCLED OFFSET BLOCK OR PLASTIC BLOCKOUT

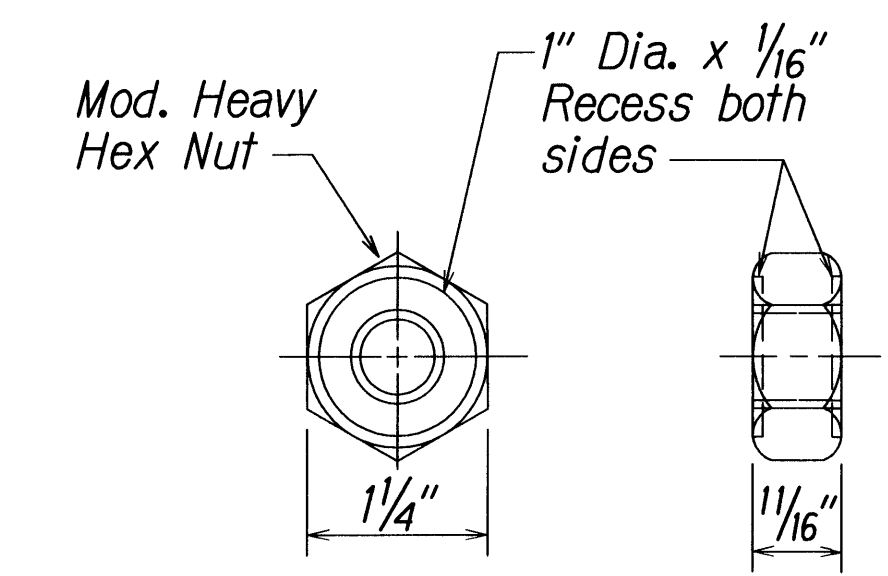
NOTE:
All Holes are 3/4" Dia.



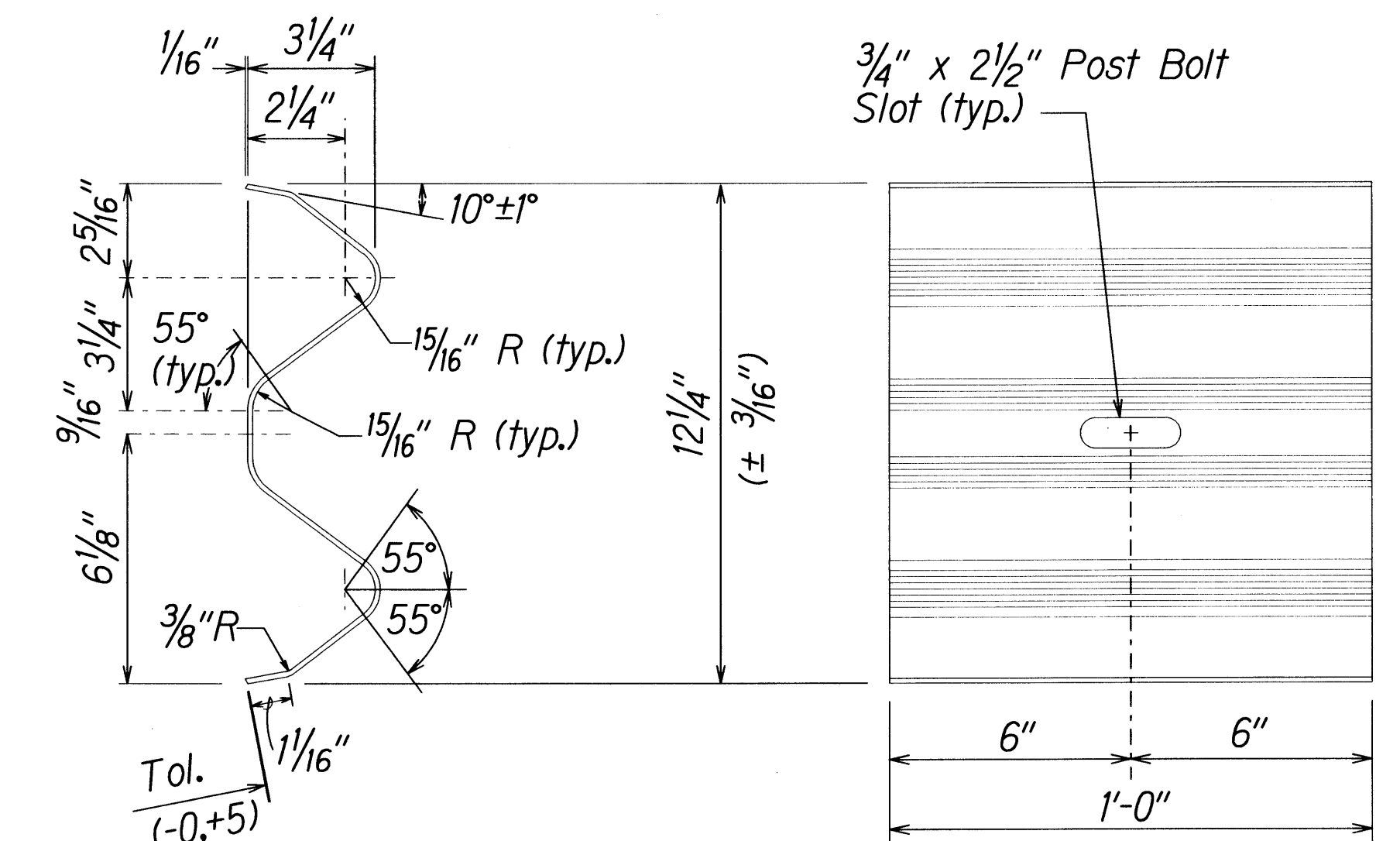
W-BEAM STRONG POST (PWE01)



DESIGNATOR	L
FBB01	1 3/8"
FBB02	2"
FBB03	10"

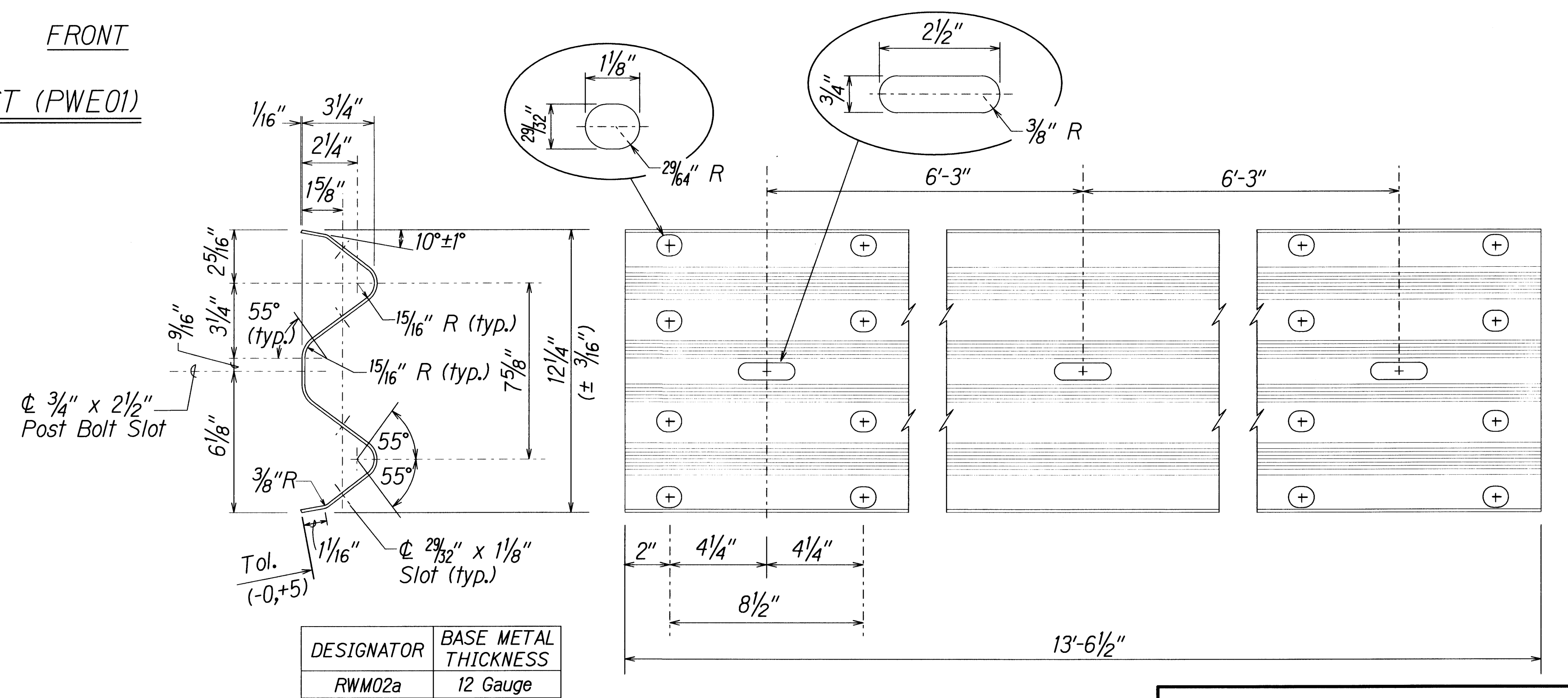


GUARDRAIL BOLTS AND RECESSED NUT



DESIGNATOR	BASE METAL THICKNESS
RWB01a	12 Gauge

W-BEAM BACK-UP-PLATE (RWB01a)



DESIGNATOR	BASE METAL THICKNESS
RWM02a	12 Gauge

2 SPACE W-BEAM GUARDRAIL (RWM02a)

STATE OF HAWAII
DEPARTMENT OF TRANSPORTATION
HIGHWAYS DIVISION

STRONG POST W-BEAM GUARDRAIL
HALEAKALA CRATER ROAD PAVEMENT PREVENTIVE MAINTENANCE
M.P. 0.00 to M.P. 2.00
Federal-Aid Project No. STP-0378(003)
Scale: NTS Date: March, 2011