

INDEX TO DRAWINGS	
SHEET NO	DESCRIPTION
1	TITLE SHEET
2	TYP SECT. & GEN. NOTES
3-7	PLANS
8	REFL. MARK., SIGNS
9	WEAKENED AREAS
10-18	STANDARD DETAILS

STATE OF HAWAII

DEPARTMENT OF TRANSPORTATION

HIGHWAYS DIVISION

"AS-BUILT" PLANS FOR HONOLULU, HAWAII

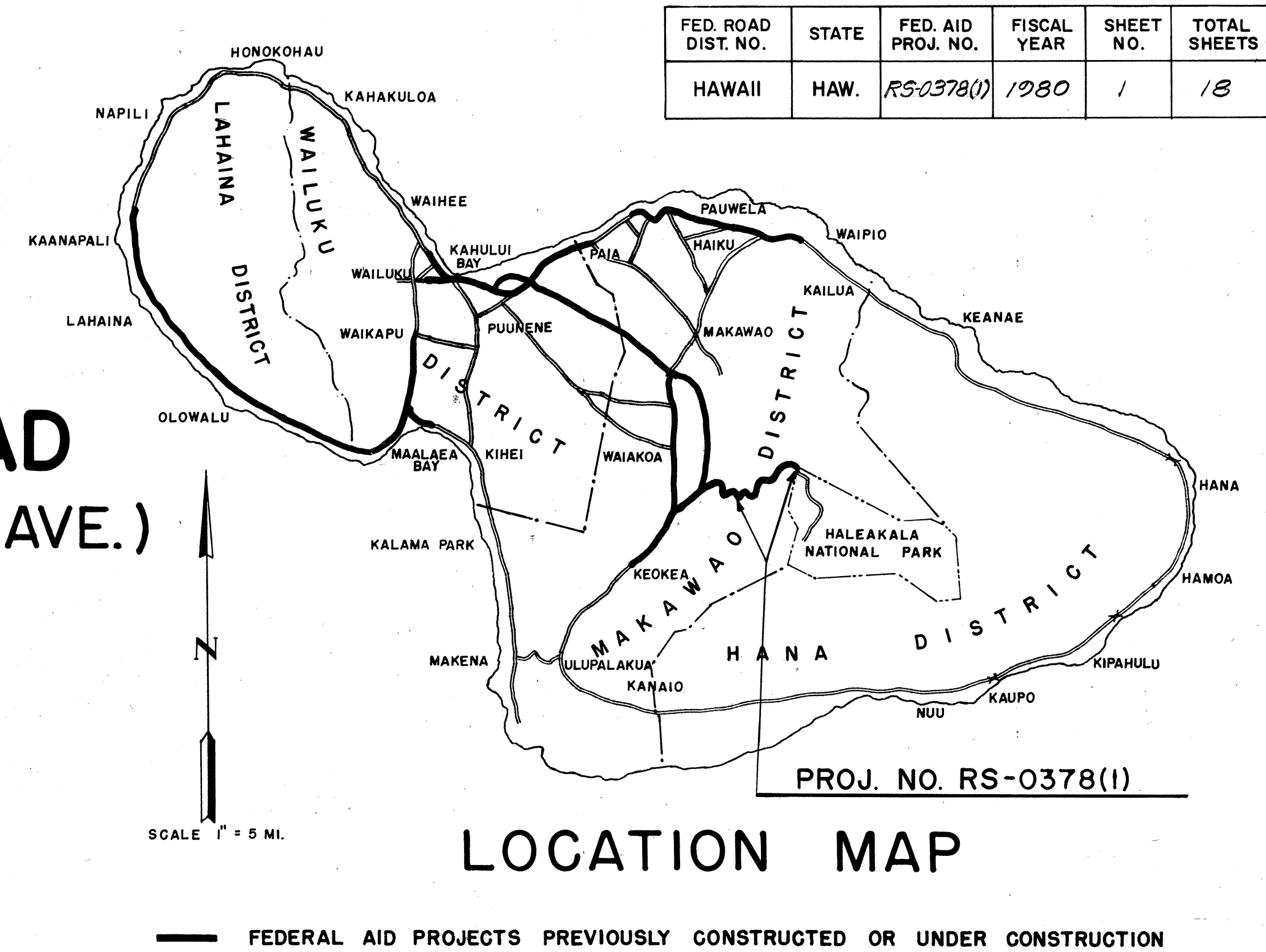
RESURFACING HALEAKALA CRATER ROAD

(HALEAKALA NATIONAL PARK BOUNDARY TOWARDS KEKAULIKE AVE.)

FEDERAL AID PROJECT NO. RS-0378(I)

DISTRICT OF MAKAWAO

ISLAND OF MAUI



ALL CHANGES MADE DURING CONSTRUCTION HAVE BEEN INCORPORATED ON THESE PLANS IN RED EXCEPT CHANGES IN THE ORIGINAL THEORETICAL QUANTITIES. FOR ACTUAL QUANTITIES, REFER TO PROJECT LEDGER AND/OR COMPUTATION BOOK.

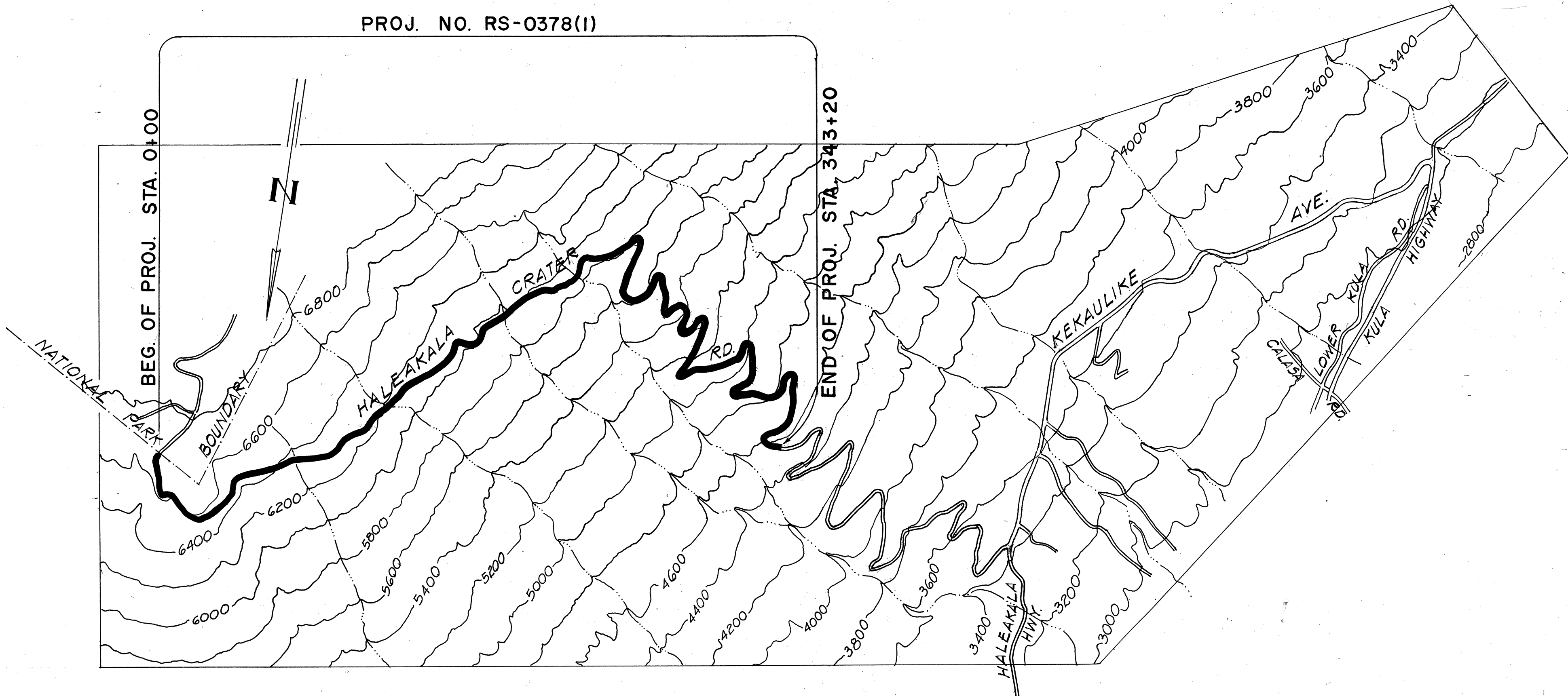
George N. Kaya

RESIDENT ENGINEER

11/2/81

DATE

DESIGN DESIGNATION	
ADT (CURRENT)	950
ADT (2000)	1,950
DHV	230
V (POSTED)	30MPH
T	4.5 %



LAYOUT OF PROJECT

SCALE : 1" = 2000'

LENGTH OF PROJECT

6.500 MI.

" " "

10.459 KM.

DEPARTMENT OF TRANSPORTATION

STATE OF HAWAII

APPROVED:

James R. Carras

5/17/80

DIR. OF TRANSPORTATION

DATE

MAUI DISTRICT

DESIGNED BY

MIKE MIURA

548-7490

MAY, 1980

P. S. & E. BY

PHONE

DATE