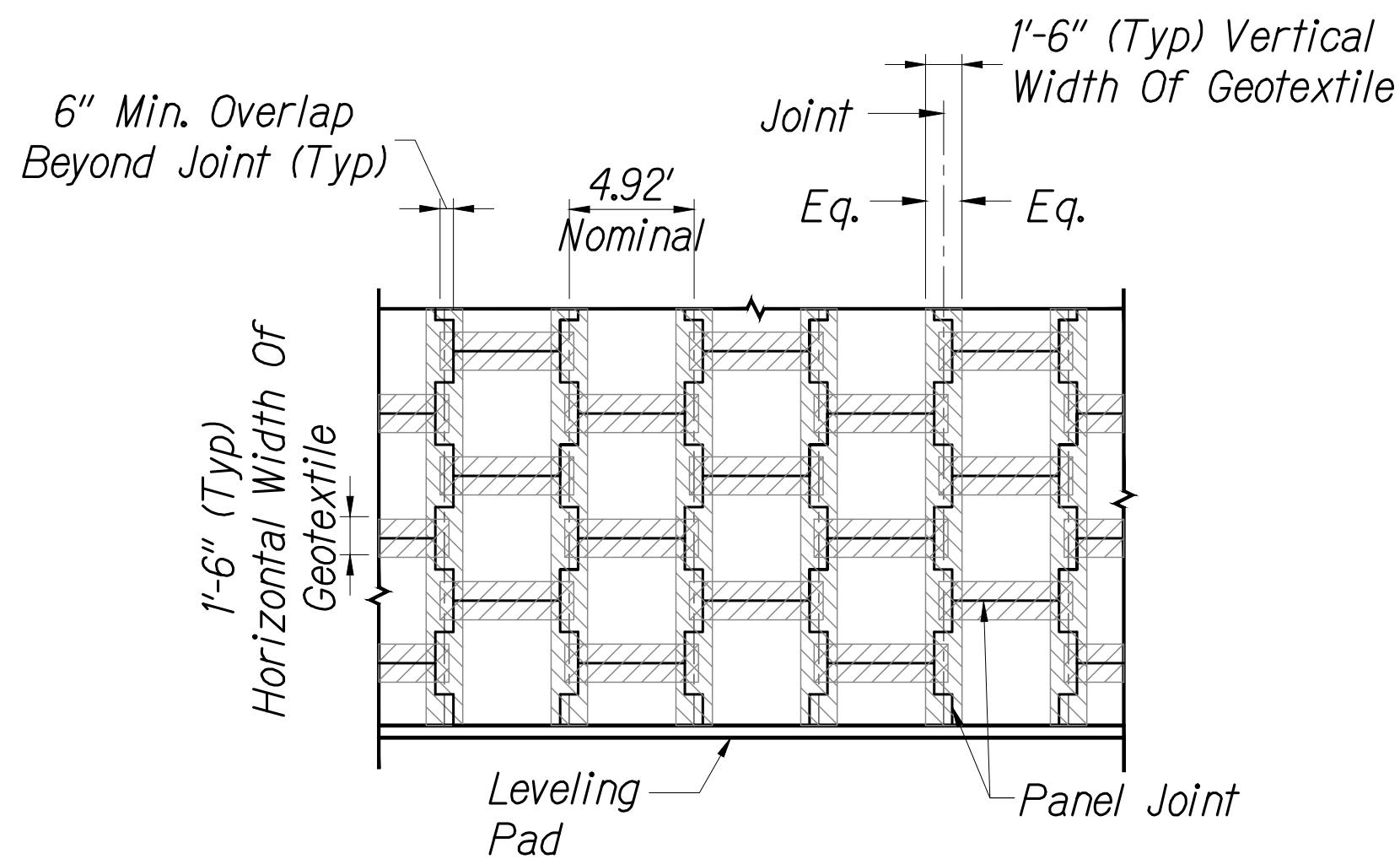


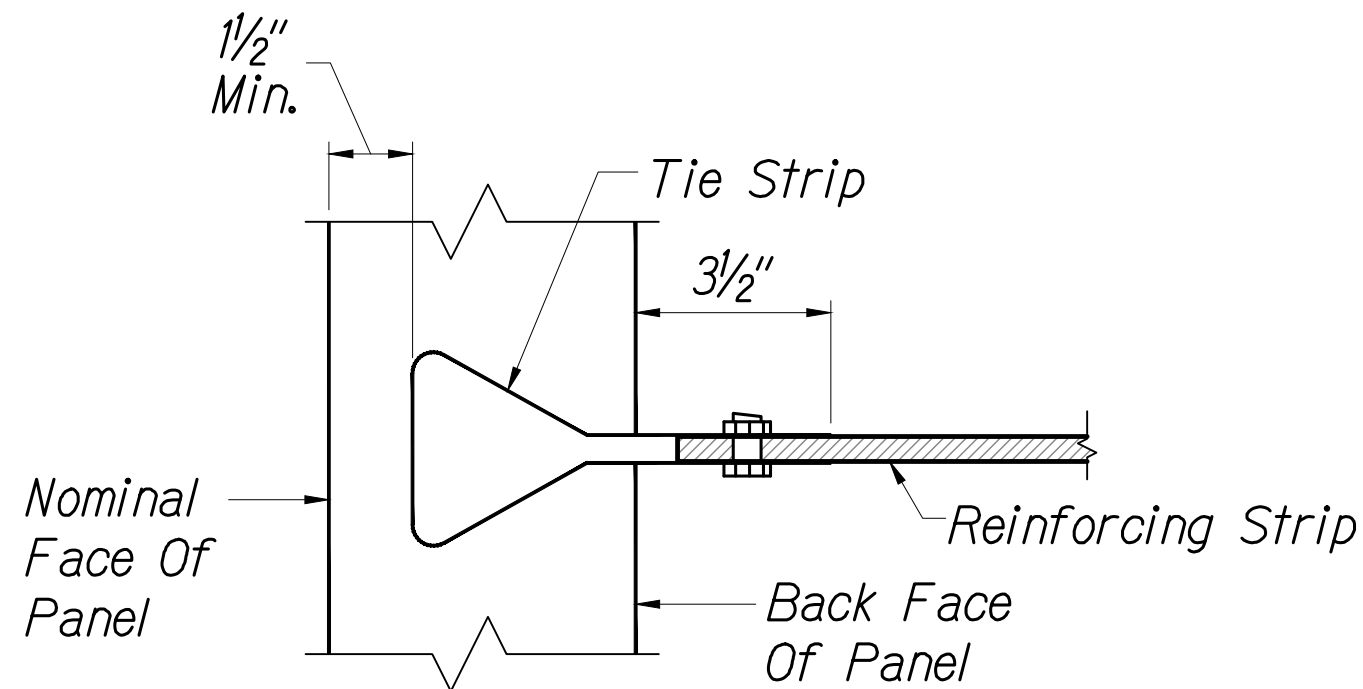
FED. ROAD DIST. NO.	STATE	FED. AID PROJ. NO.	FISCAL YEAR	SHEET NO.	TOTAL SHEETS
MAUI	HAW.	ER-25(001)	2023	28	34



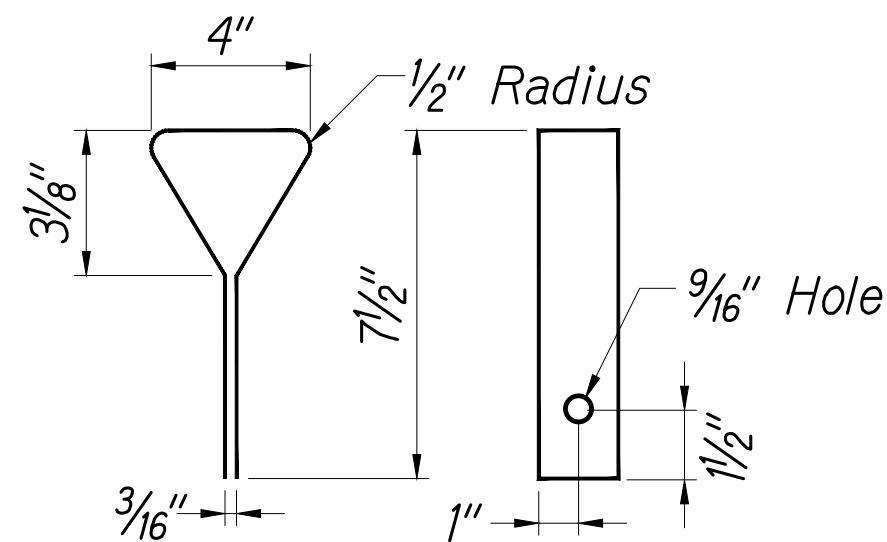
Notes:

1. Panel Geotextile Shall Be Firmly Affixed To Back Of Panel As Shown Using Adhesive Supplied By The MSE Wall Supplier. Apply Adhesive On Back Face Of Panels And Not On Geotextile. Do Not Apply Adhesive Within 2" Of Panel Joints.
2. Panel Geotextile Shall Be Approximately Centered On Joints.
3. Panel Geotextile Shall Have A 6" Min. Overlap. Vertical Geotextile Shall Overlap Horizontal Geotextile. When Two Vertical Geotextiles Overlap, The Upper Piece Shall Overlap The Lower. Panel Geotextile Is Not Required At The Interface Between Panel And Leveling Pad Unless Otherwise Noted In The Design Drawings.

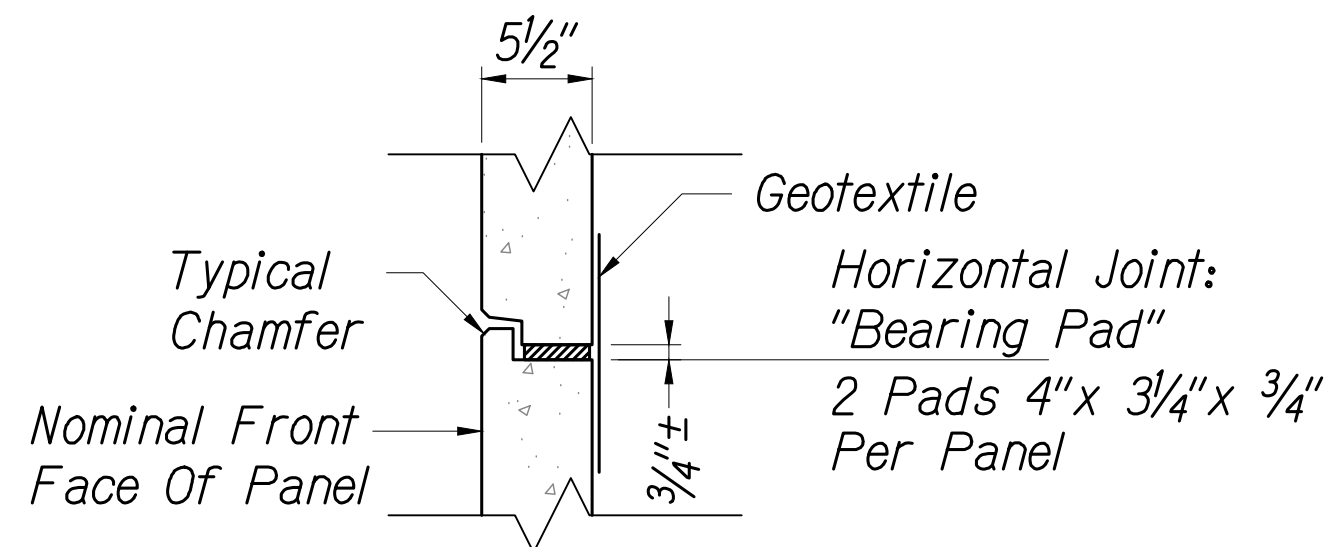
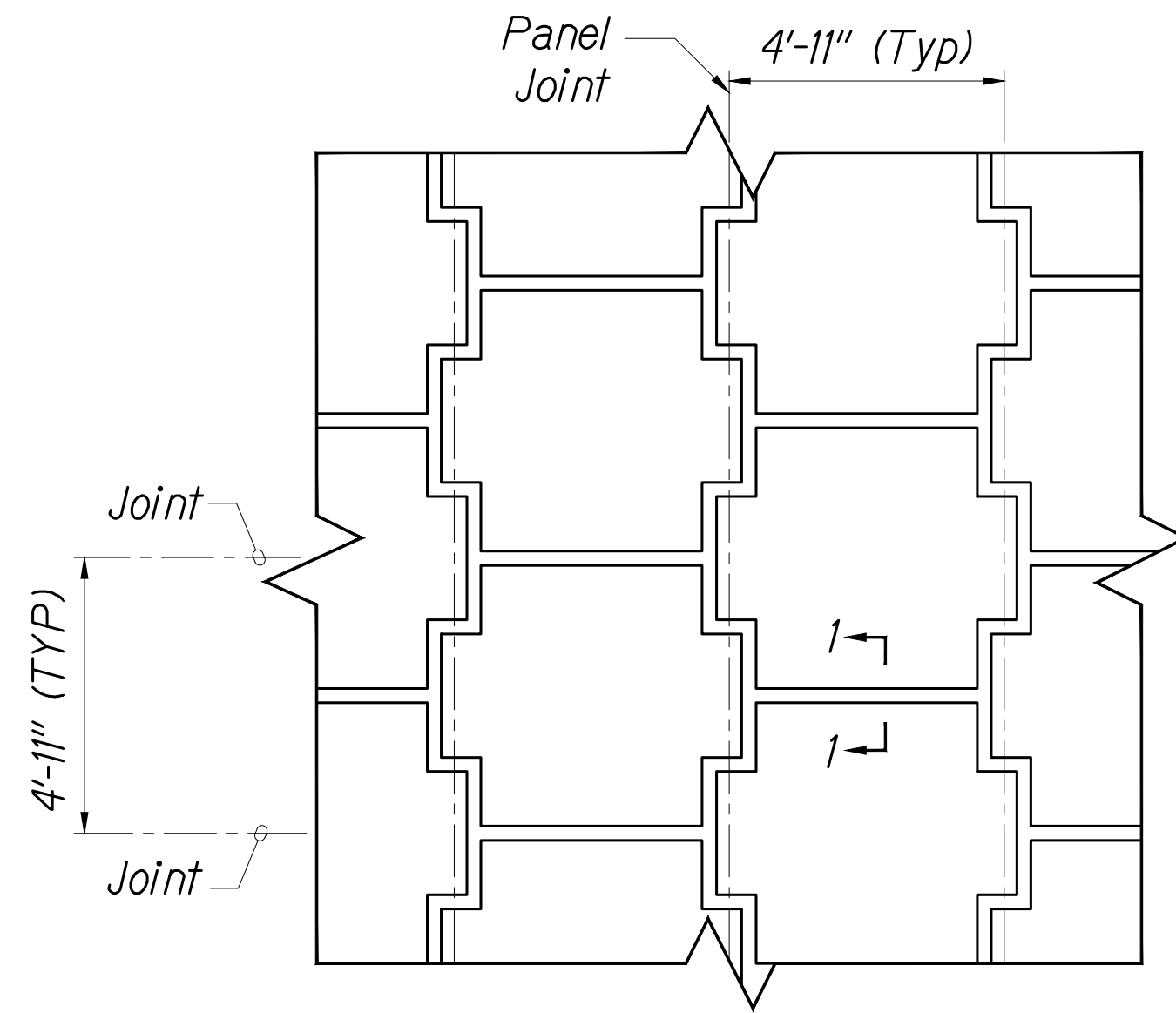
Geotextile Installation Detail
Partial Elevation - Back Face
Not To Scale



Panel Strip Connection Detail
Not To Scale

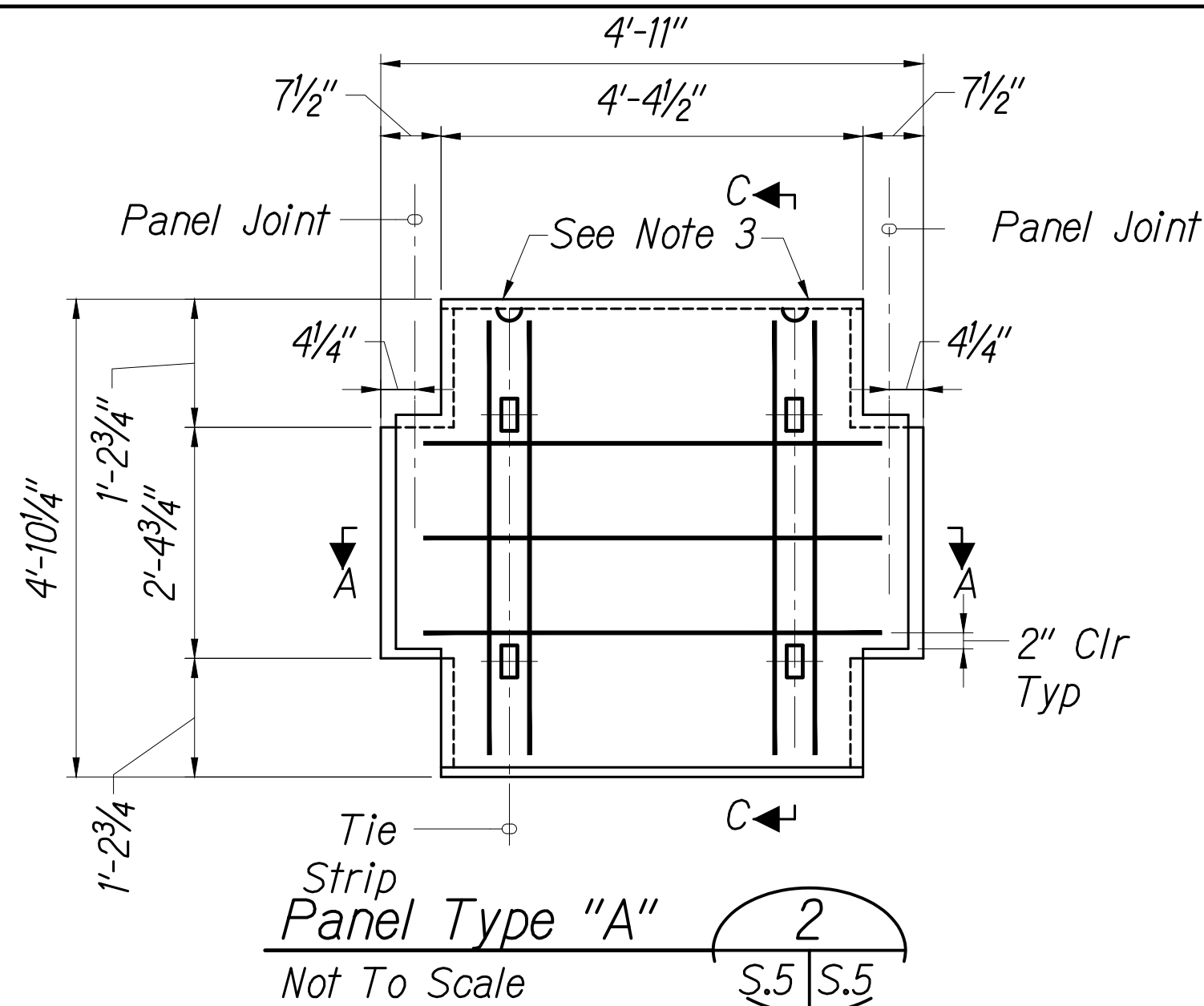


Tie Strip Detail
Not To Scale

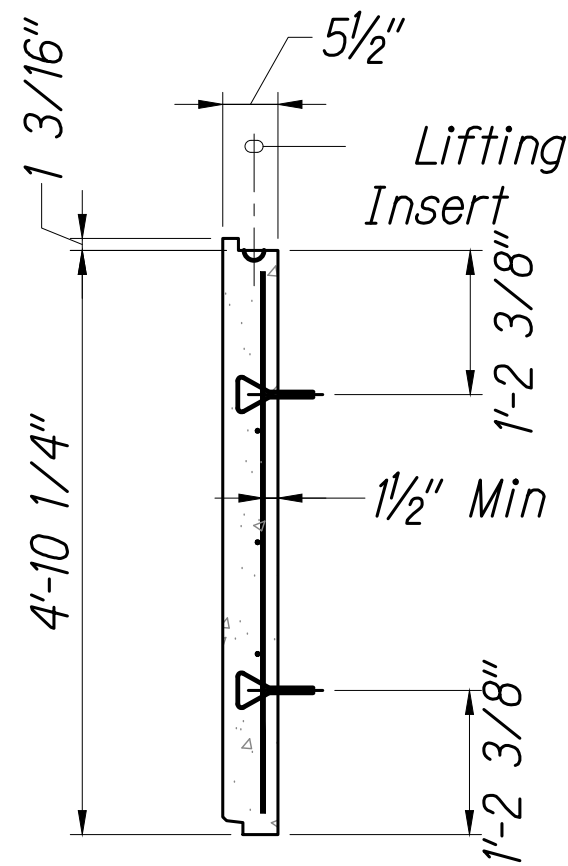


Section 1-1
Not To Scale

Typical Panel Layout
Elevation - Front Face
Not To Scale



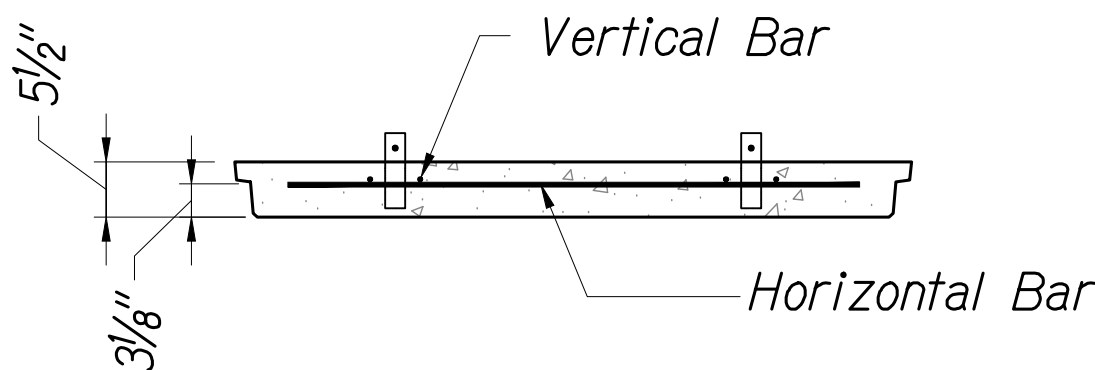
Panel Type "A"
Not To Scale



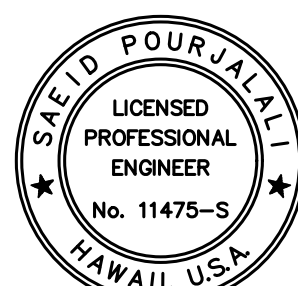
Section C-C
Not To Scale

Notes:

1. 3/8" X 3/8" Chamfer Shall Be Provided On All Exposed Edges (Front Face Only).
2. All Panel Types And Other Related Elements Shall Be Detailed On Shop Drawings.
3. All Panels Shall Have Two Lifting Inserts Of One Ton Capacity Each.



Section A-A
Not To Scale



LICENSE EXPIRES 4/30/24

THIS WORK WAS PREPARED BY
ME OR UNDER MY SUPERVISION

Saeed Pourjafari

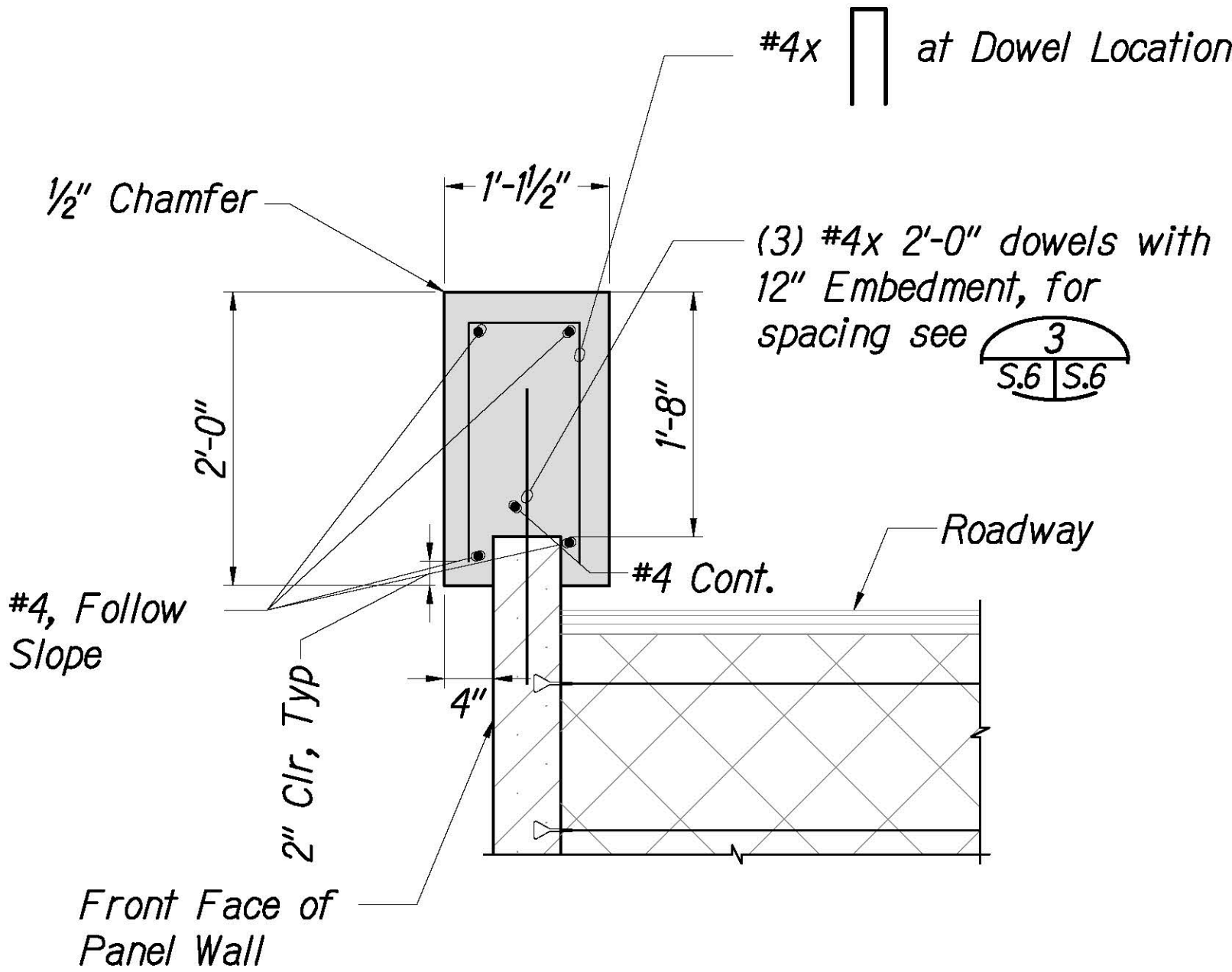
STATE OF HAWAII
DEPARTMENT OF TRANSPORTATION
HIGHWAYS DIVISION

**TYPICAL CONCRETE
WALL PANEL DETAILS**

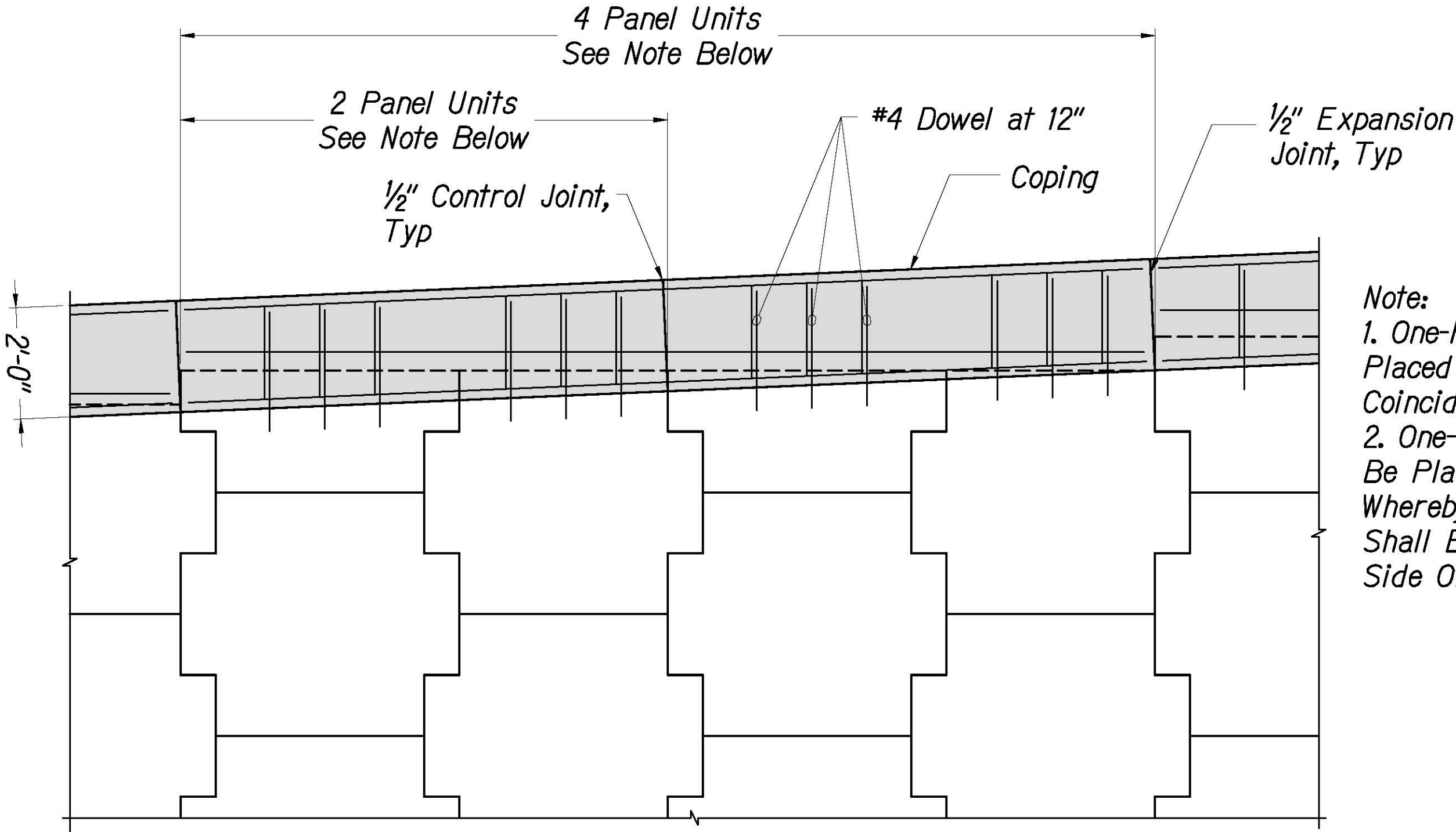
KEKAULIKE AVENUE, EMERGENCY REPAIRS
M.P. 8.2
FEDERAL-AID PROJECT NO. ER-25(001)
Scale: As Noted Date: March 2023

SHEET NO. 2 OF 3 SHEETS

FED. ROAD DIST. NO.	STATE	FED. AID PROJ. NO.	FISCAL YEAR	SHEET NO.	TOTAL SHEETS
MAUI	HAW.	ER-25(001)	2022	ADD.29	30

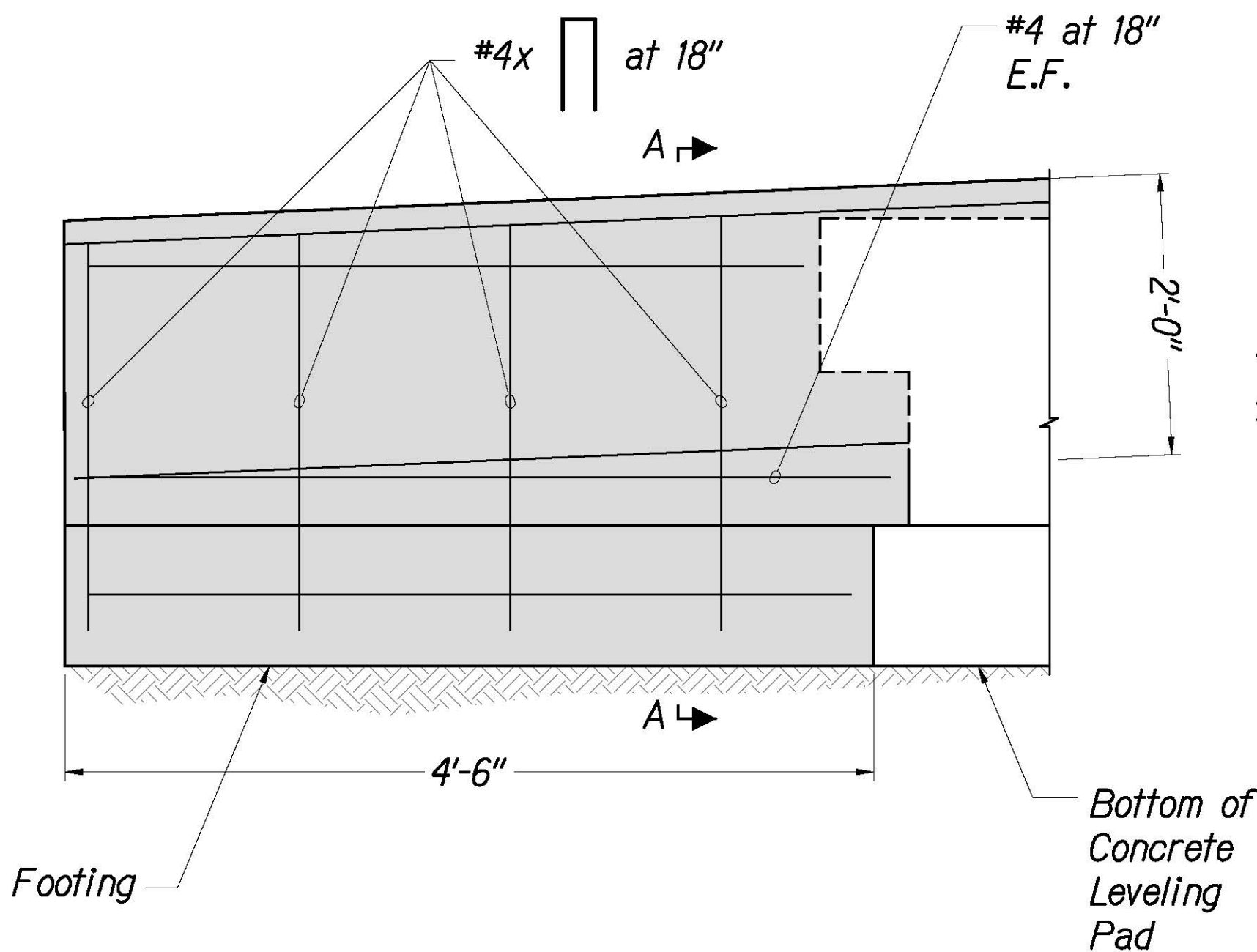


Coping Detail
Not To Scale

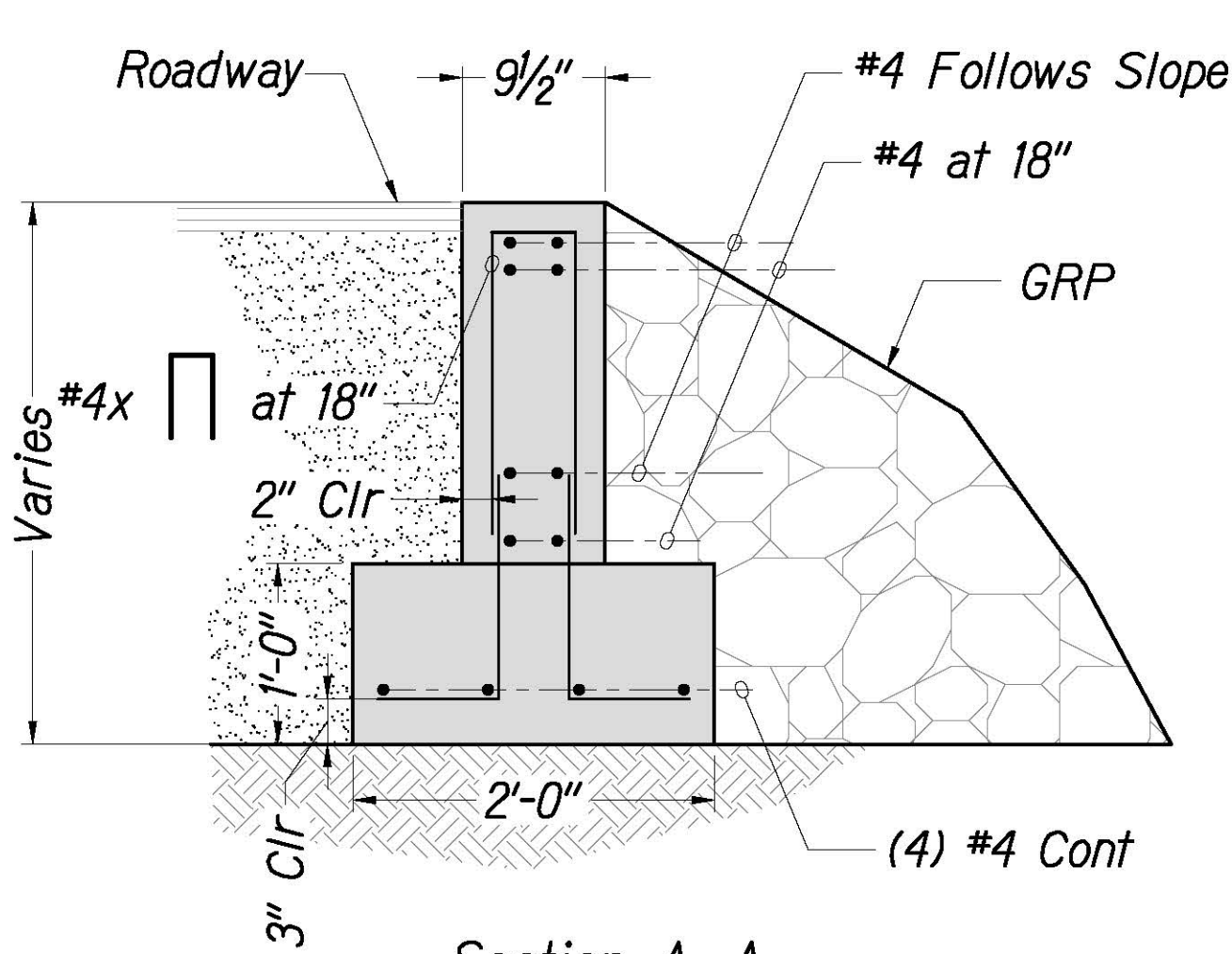


Coping Elevation
Not To Scale

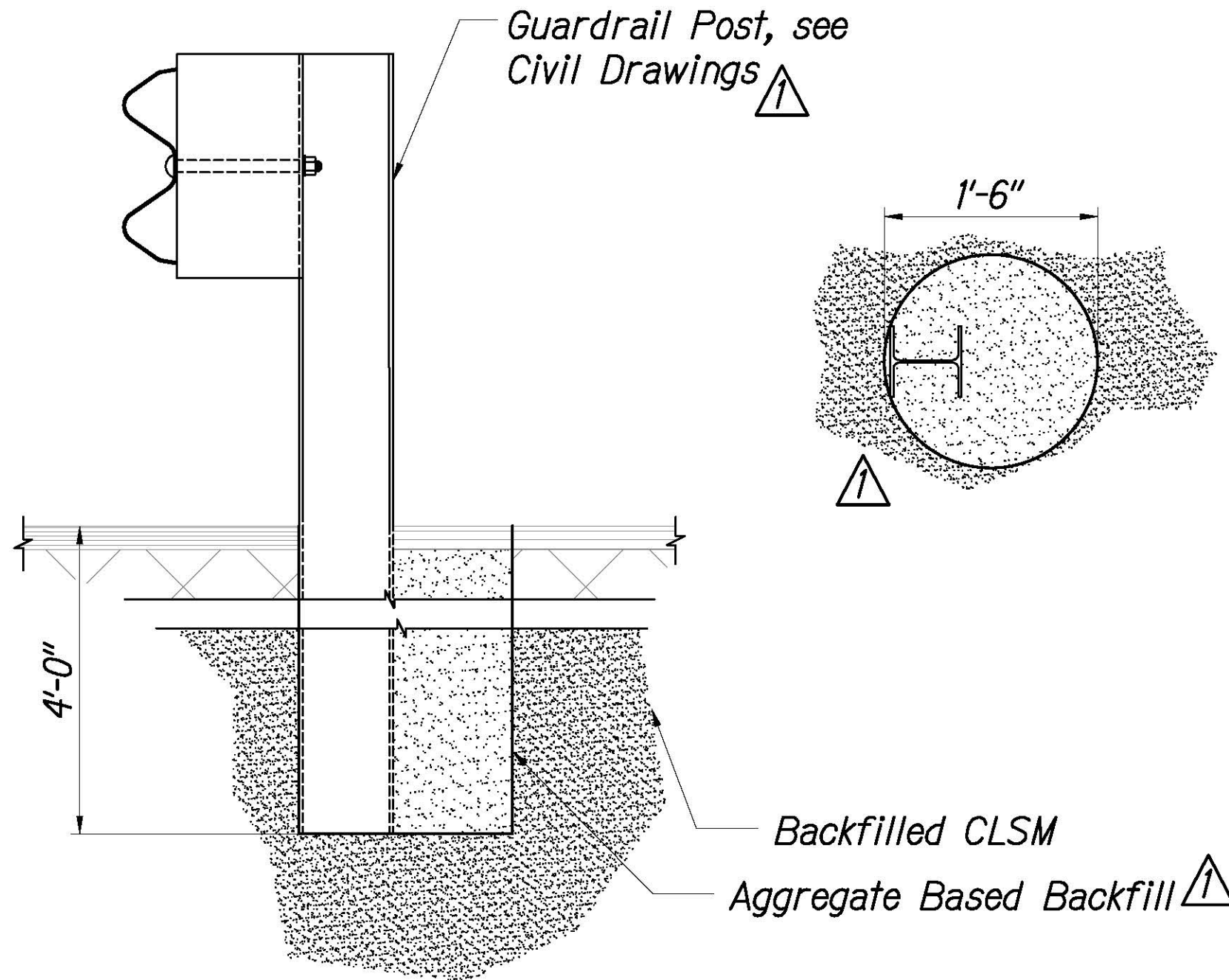
Note:
1. One-Half Inch Control Joints Shall Be Placed At Every Two-Panel Interval Coinciding With Every Other Panel Joint.
2. One-Half Inch Expansion Joints Shall Be Placed At Every Four-Panel Interval Whereby All Longitudinal Reinforcement Shall Be Field Cut 2" Short Of Each Side Of The Expansion Joints.



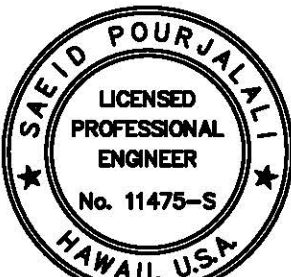
Coping Enclosure Detail
Not To Scale



Section A-A
Not To Scale



Guardrail Embedment Detail
Not To Scale



LICENSE EXPIRES 4/30/24

THIS WORK WAS PREPARED BY ME OR UNDER MY SUPERVISION

Saeid Pourjafari

STATE OF HAWAII
DEPARTMENT OF TRANSPORTATION
HIGHWAYS DIVISION

COPING DETAILS

KEKAULIKE AVENUE, EMERGENCY REPAIRS

M.P. 8.2

FEDERAL-AID PROJECT NO. ER-25(001)

Scale: As Noted

Date: April 2022

SHEET No. 3 OF 3 SHEETS

ADD.29

ORIGINAL PLAN	DATE
NOTE BOOK	
NO.	

REVISED: P:\2021-2024\2023-10-01\Highways - Kaula Avenue Enclosure - Substation\050_Design\Structure\Kaula_Summary\2024-10-01\ER-25(001)_Coping Details.dwg, 01/19/2024, 01:10 pm



01-19-24

Revised Guardrail Embedment
Position and Fill Material

DATE

REVISION

