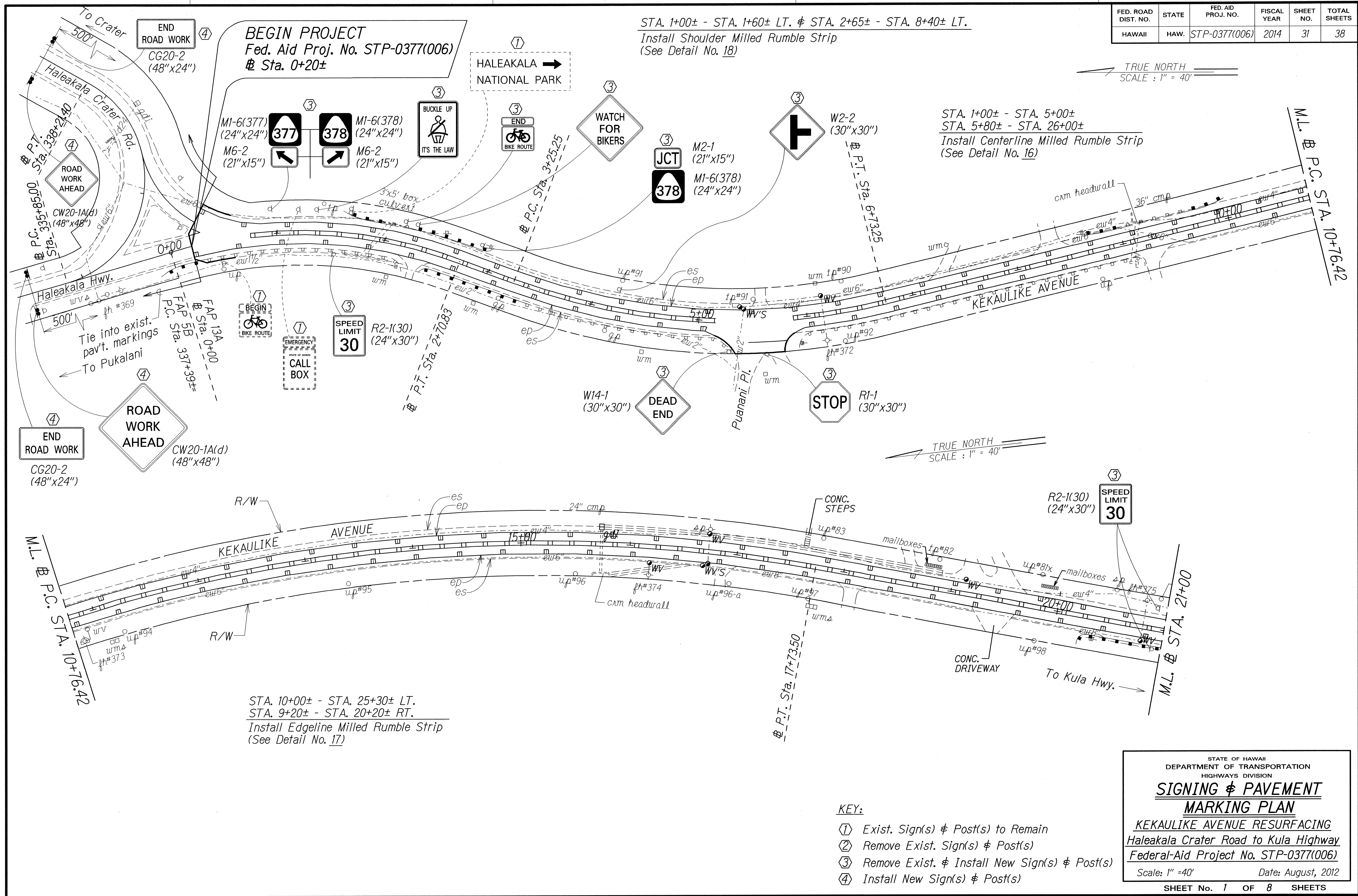


FED. ROAD DIST. NO.	STATE	FED. AID PROJ. NO.	FISCAL YEAR	SHEET NO.	TOTAL SHEETS
HAWAII	HAW.	STP-0377(006)	2014	31	38



STA. 1+00± - STA. 1+60± LT. & STA. 2+65± - STA. 8+40± LT.  
 Install Shoulder Milled Rumble Strip  
 (See Detail No. 18)

STA. 1+00± - STA. 5+00±  
 STA. 5+80± - STA. 26+00±  
 Install Centerline Milled Rumble Strip  
 (See Detail No. 16)

STA. 10+00± - STA. 25+30± LT.  
 STA. 9+20± - STA. 20+20± RT.  
 Install Edgeline Milled Rumble Strip  
 (See Detail No. 17)

TRUE NORTH  
 SCALE: 1" = 40'

TRUE NORTH  
 SCALE: 1" = 40'

DATE	3/12
SURVEY PLOTTED BY	
DESIGNED BY	alex.c.
QUANTITIES BY	
CHECKED BY	

- KEY:
- ① Exist. Sign(s) & Post(s) to Remain
  - ② Remove Exist. Sign(s) & Post(s)
  - ③ Remove Exist. & Install New Sign(s) & Post(s)
  - ④ Install New Sign(s) & Post(s)

STATE OF HAWAII  
 DEPARTMENT OF TRANSPORTATION  
 HIGHWAYS DIVISION

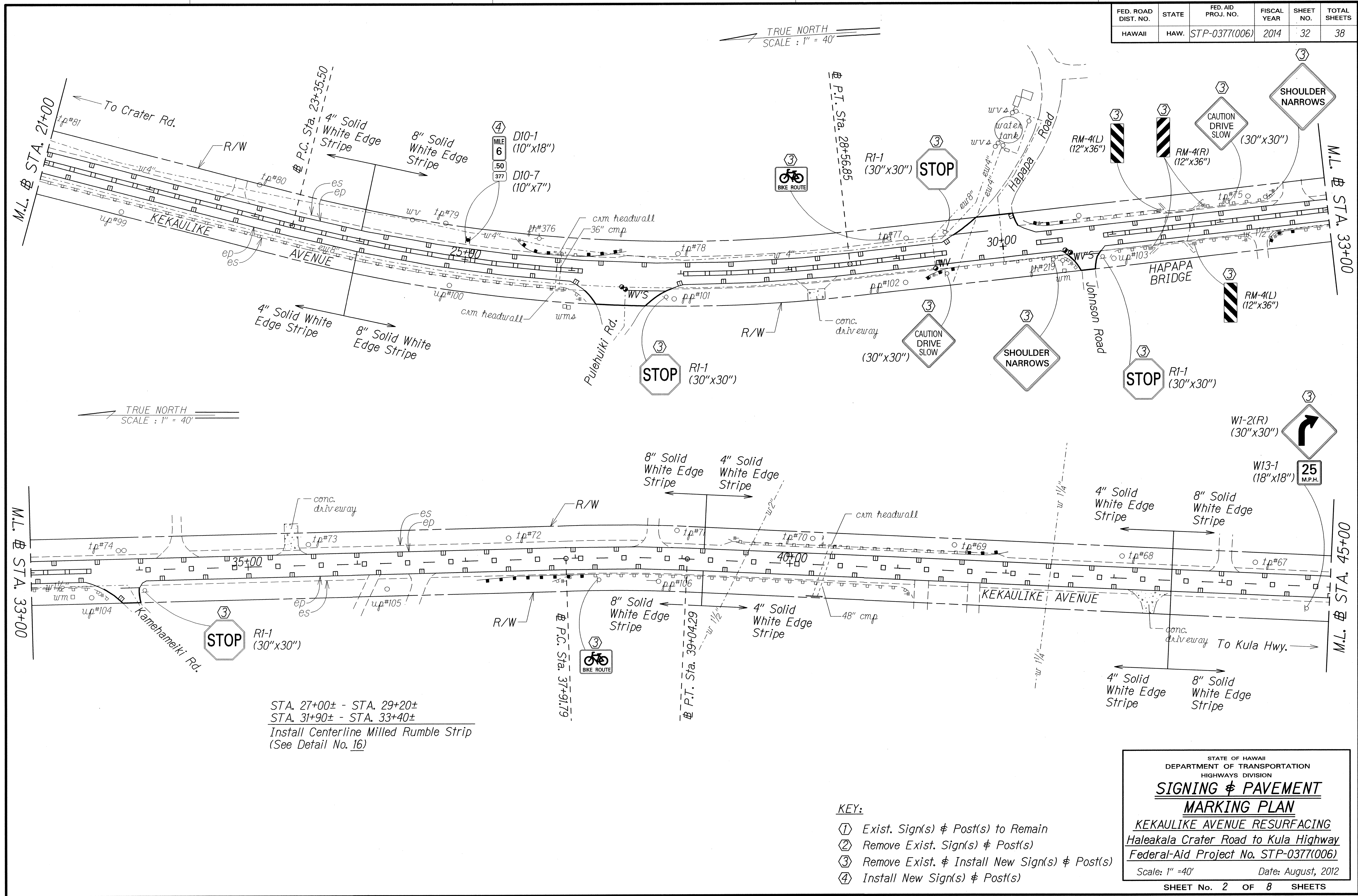
**SIGNING & PAVEMENT MARKING PLAN**

**KEKAULIKE AVENUE RESURFACING**  
 Haleakala Crater Road to Kula Highway  
 Federal-Aid Project No. STP-0377(006)

Scale: 1" = 40' Date: August, 2012

SHEET No. 1 OF 8 SHEETS

FED. ROAD DIST. NO.	STATE	FED. AID PROJ. NO.	FISCAL YEAR	SHEET NO.	TOTAL SHEETS
HAWAII	HAW.	STP-0377(006)	2014	32	38



TRUE NORTH  
SCALE : 1" = 40'

TRUE NORTH  
SCALE : 1" = 40'

STA. 27+00± - STA. 29+20±  
STA. 31+90± - STA. 33+40±  
Install Centerline Milled Rumble Strip  
(See Detail No. 16)

SURVEY PLOTTED BY	DATE
TRACED BY	8/12
DESIGNED BY	
QUANTITIES BY	
CHECKED BY	
ORIGINAL PLAN	
NOTE BOOK	
DESIGNED BY	alex.c.
QUANTITIES BY	
CHECKED BY	

- KEY:
- ① Exist. Sign(s) & Post(s) to Remain
  - ② Remove Exist. Sign(s) & Post(s)
  - ③ Remove Exist. & Install New Sign(s) & Post(s)
  - ④ Install New Sign(s) & Post(s)

STATE OF HAWAII  
DEPARTMENT OF TRANSPORTATION  
HIGHWAYS DIVISION

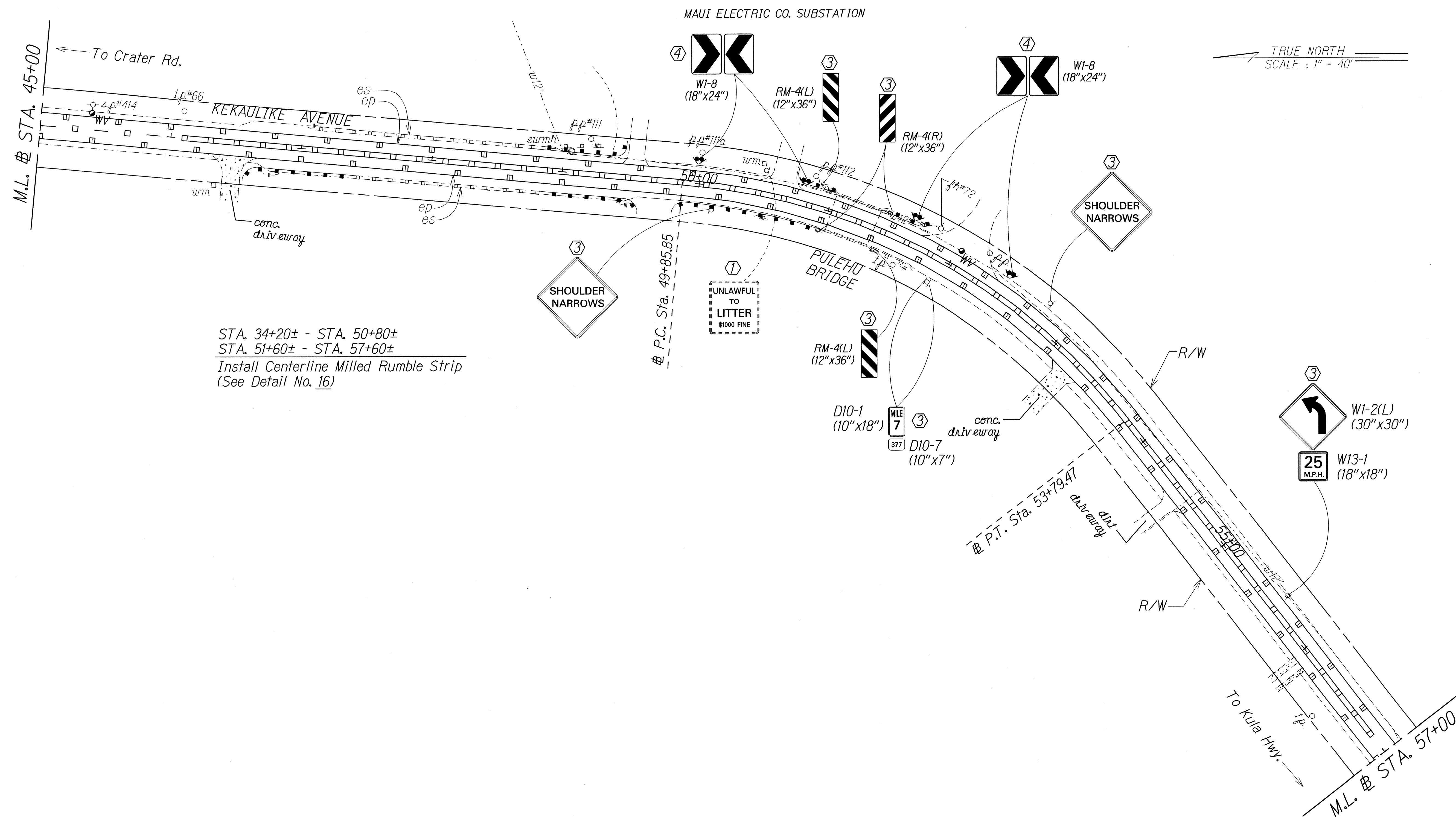
**SIGNING & PAVEMENT MARKING PLAN**

**KEKAULIKE AVENUE RESURFACING**  
Haleakala Crater Road to Kula Highway  
Federal-Aid Project No. STP-0377(006)

Scale: 1" = 40'      Date: August, 2012

SHEET No. 2 OF 8 SHEETS

FED. ROAD DIST. NO.	STATE	FED. AID PROJ. NO.	FISCAL YEAR	SHEET NO.	TOTAL SHEETS
HAWAII	HAW.	STP-0377(006)	2014	33	38



STA. 34+20± - STA. 50+80±  
 STA. 51+60± - STA. 57+60±  
 Install Centerline Milled Rumble Strip  
 (See Detail No. 16)

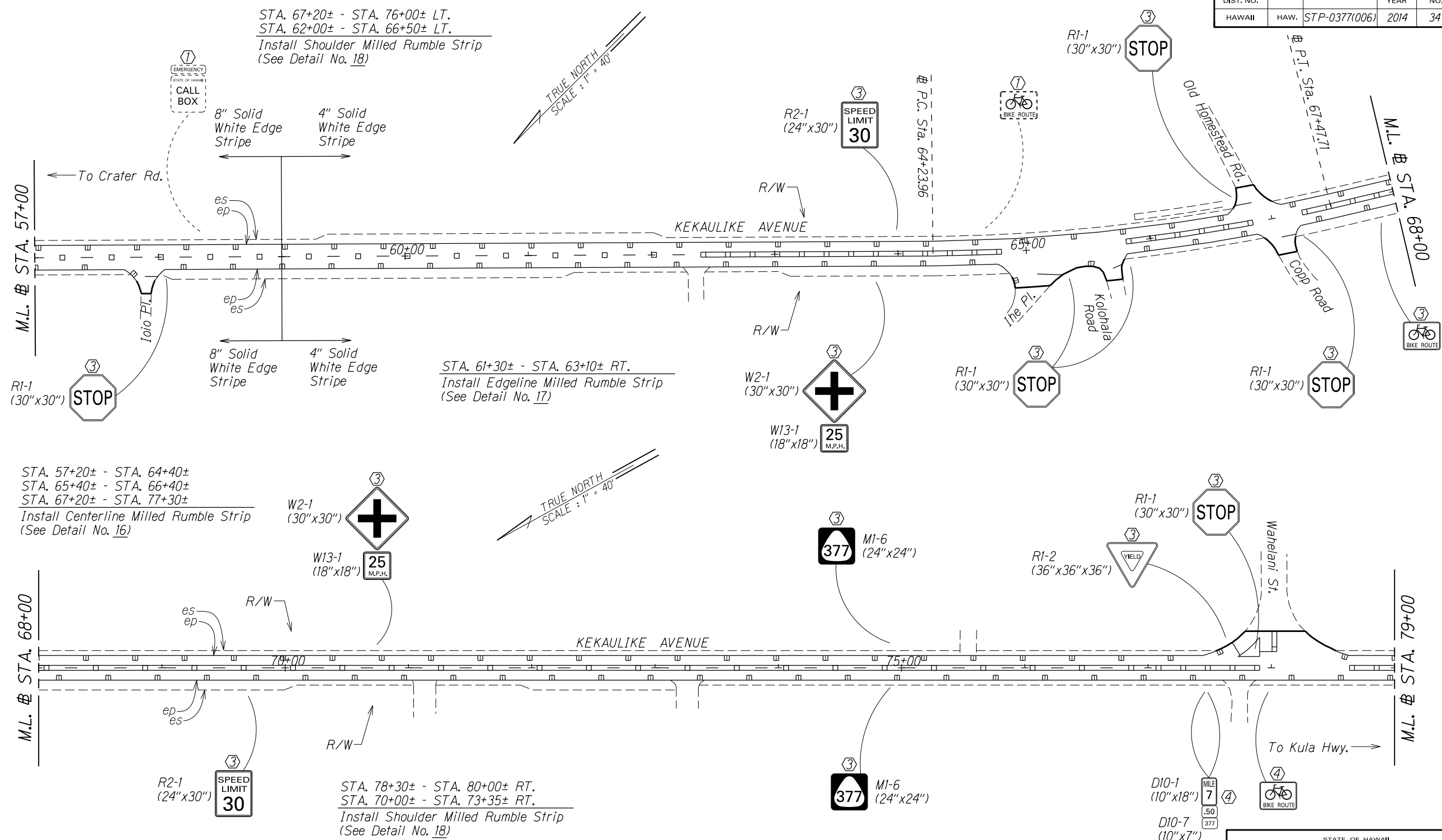
TRUE NORTH  
 SCALE : 1" = 40'

SURVEY PLOTTED BY	DATE
DRAWN BY	3/1/12
DESIGNED BY	
QUANTITIES BY	
CHECKED BY	

- KEY:
- ① Exist. Sign(s) & Post(s) to Remain
  - ② Remove Exist. Sign(s) & Post(s)
  - ③ Remove Exist. & Install New Sign(s) & Post(s)
  - ④ Install New Sign(s) & Post(s)

STATE OF HAWAII  
 DEPARTMENT OF TRANSPORTATION  
 HIGHWAYS DIVISION  
**SIGNING & PAVEMENT MARKING PLAN**  
 KEKAULIKE AVENUE RESURFACING  
 Haleakala Crater Road to Kula Highway  
 Federal-Aid Project No. STP-0377(006)  
 Scale: 1" = 40' Date: August, 2012  
 SHEET No. 3 OF 8 SHEETS

FED. ROAD DIST. NO.	STATE	FED. AID PROJ. NO.	FISCAL YEAR	SHEET NO.	TOTAL SHEETS
HAWAII	HAW.	STP-0377(006)	2014	34	38



STA. 67+20± - STA. 76+00± LT.  
 STA. 62+00± - STA. 66+50± LT.  
 Install Shoulder Milled Rumble Strip  
 (See Detail No. 18)

STA. 61+30± - STA. 63+10± RT.  
 Install Edgeline Milled Rumble Strip  
 (See Detail No. 17)

STA. 57+20± - STA. 64+40±  
 STA. 65+40± - STA. 66+40±  
 STA. 67+20± - STA. 77+30±  
 Install Centerline Milled Rumble Strip  
 (See Detail No. 16)

STA. 78+30± - STA. 80+00± RT.  
 STA. 70+00± - STA. 73+35± RT.  
 Install Shoulder Milled Rumble Strip  
 (See Detail No. 18)

SURVEY PLOTTED BY	DATE
DESIGNED BY	
DESIGNED BY	
QUANTITIES BY	
CHECKED BY	

- KEY:**
- ① Exist. Sign(s) & Post(s) to Remain
  - ② Remove Exist. Sign(s) & Post(s)
  - ③ Remove Exist. & Install New Sign(s) & Post(s)
  - ④ Install New Sign(s) & Post(s)

**LEGEND FOR AS-BUILT POSTINGS**

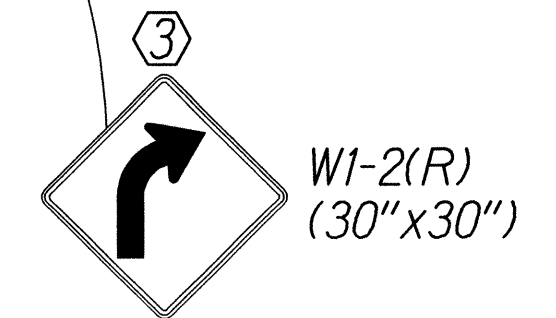
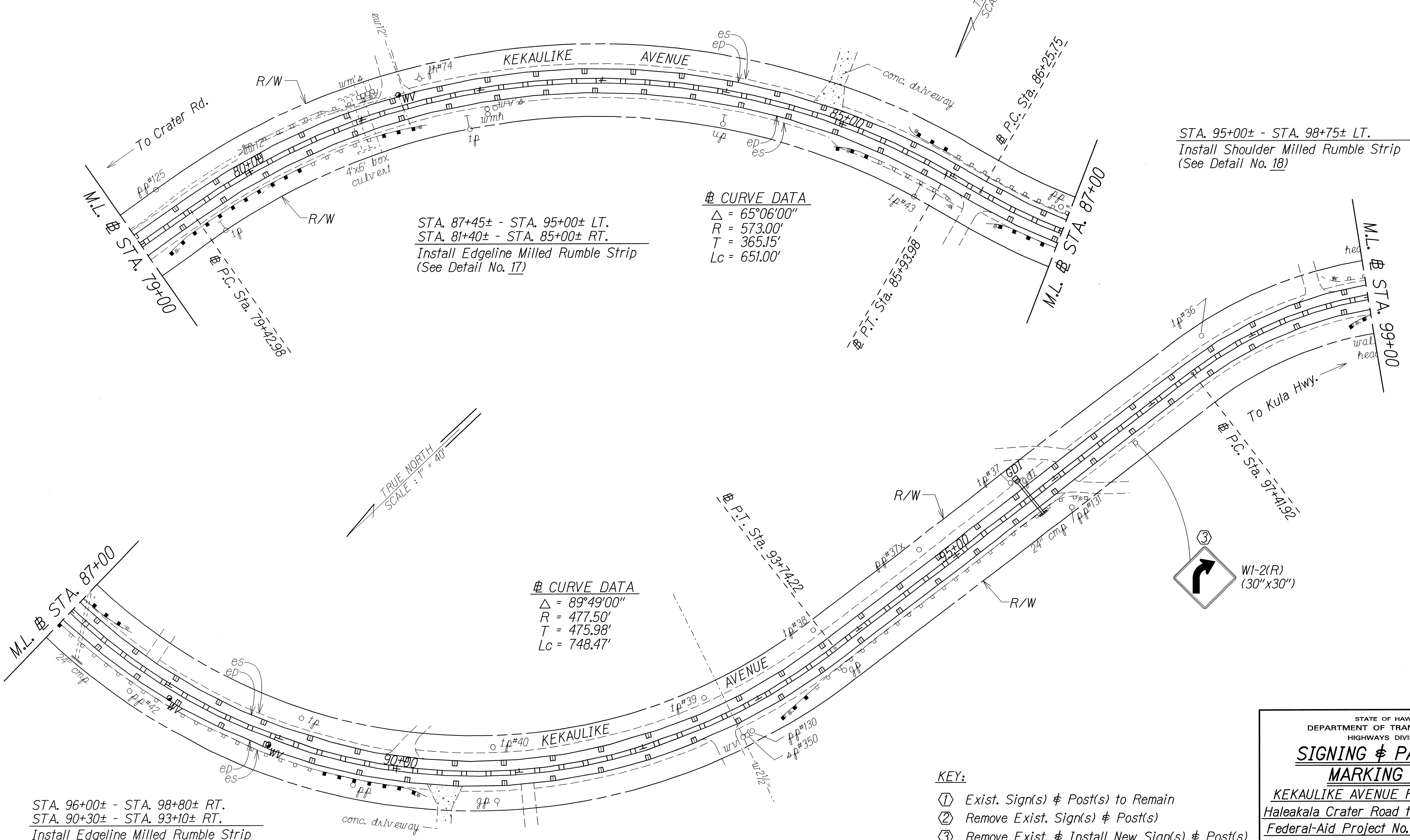
	Squiggly line for as-built deletion
	Double line for as-built deletion
Roadway	Text for as-built posting

STATE OF HAWAII  
 DEPARTMENT OF TRANSPORTATION  
 HIGHWAYS DIVISION  
**SIGNING & PAVEMENT MARKING PLAN**  
 KEKAULIKE AVENUE RESURFACING  
 Haleakala Crater Road to Kula Highway  
 Federal-Aid Project No. STP-0377(006)  
 Scale: 1" = 40' Date: August, 2012

"AS-BUILT"

FED. ROAD DIST. NO.	STATE	FED. AID PROJ. NO.	FISCAL YEAR	SHEET NO.	TOTAL SHEETS
HAWAII	HAW.	STP-0377(006)	2014	35	38

STA. 78+30± - STA. 80+00± LT.  
 STA. 81+50± - STA. 85+50± LT.  
 Install Shoulder Milled Rumble Strip  
 (See Detail No. 18)



- KEY:**
- ① Exist. Sign(s) & Post(s) to Remain
  - ② Remove Exist. Sign(s) & Post(s)
  - ③ Remove Exist. & Install New Sign(s) & Post(s)
  - ④ Install New Sign(s) & Post(s)

STATE OF HAWAII  
 DEPARTMENT OF TRANSPORTATION  
 HIGHWAYS DIVISION

**SIGNING & PAVEMENT MARKING PLAN**

KEKAULIKE AVENUE RESURFACING  
 Haleakala Crater Road to Kula Highway  
 Federal-Aid Project No. STP-0377(006)

Scale: 1" = 40'      Date: August, 2012

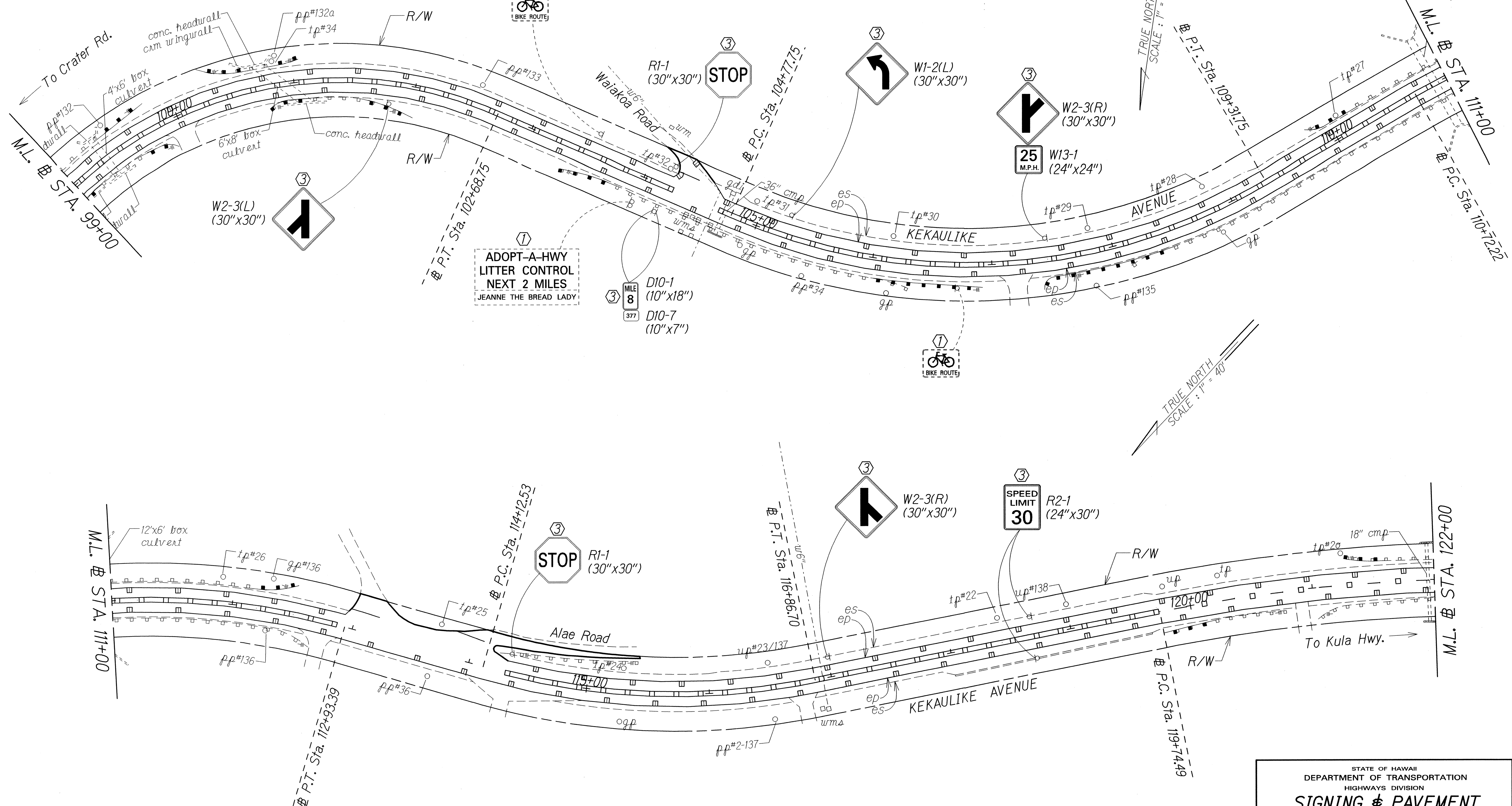
SHEET No. 5 OF 8 SHEETS

DATE	8/12
SURVEY PLOTTED BY	
DESIGNED BY	
TRACED BY	
NOTE BOOK	
DESIGNED BY	
QUANTITIES BY	
CHECKED BY	

STA. 96+00± - STA. 98+80± RT.  
 STA. 90+30± - STA. 93+10± RT.  
 Install Edgeline Milled Rumble Strip  
 (See Detail No. 17)

FED. ROAD DIST. NO.	STATE	FED. AID PROJ. NO.	FISCAL YEAR	SHEET NO.	TOTAL SHEETS
HAWAII	HAW.	STP-0377(006)	2014	36	38

STA. 78+10± - STA. 104+00±  
 Install Centerline Milled Rumble Strip  
 (See Detail No. 16)



ADOPT-A-HWY  
 LITTER CONTROL  
 NEXT 2 MILES  
 JEANNE THE BREAD LADY

MILE 8  
 D10-1 (10"x18")  
 D10-7 (10"x7")

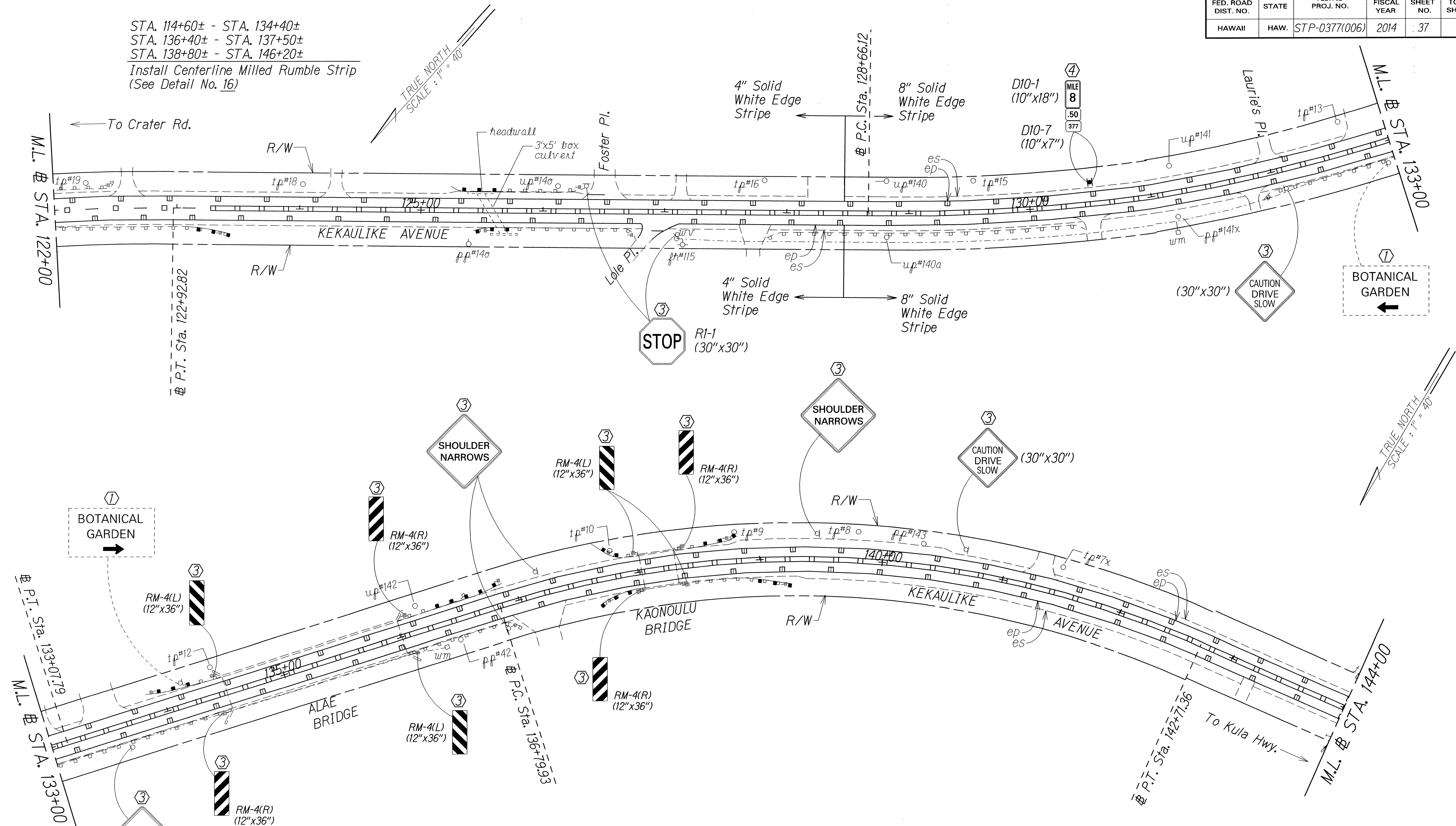
- KEY:
- ① Exist. Sign(s) & Post(s) to Remain
  - ② Remove Exist. Sign(s) & Post(s)
  - ③ Remove Exist. & Install New Sign(s) & Post(s)
  - ④ Install New Sign(s) & Post(s)

SURVEY PLOTTED BY	DATE
TRACED BY	3/12
DESIGNED BY	
QUANTITIES BY	
CHECKED BY	

STATE OF HAWAII  
 DEPARTMENT OF TRANSPORTATION  
 HIGHWAYS DIVISION  
**SIGNING & PAVEMENT MARKING PLAN**  
 KEKAULIKE AVENUE RESURFACING  
 Haleakala Crater Road to Kula Highway  
 Federal-Aid Project No. STP-0377(006)  
 Scale: 1" = 40' Date: August, 2012  
 SHEET No. 6 OF 8 SHEETS

FED. ROAD DIST. NO.	STATE	FED. AID PROJ. NO.	FISCAL YEAR	SHEET NO.	TOTAL SHEETS
HAWAII	HAW.	STP-0377(006)	2014	37	38

STA. 114+60± - STA. 134+40±  
 STA. 136+40± - STA. 137+50±  
 STA. 138+80± - STA. 146+20±  
 Install Centerline Milled Rumble Strip  
 (See Detail No. 16)

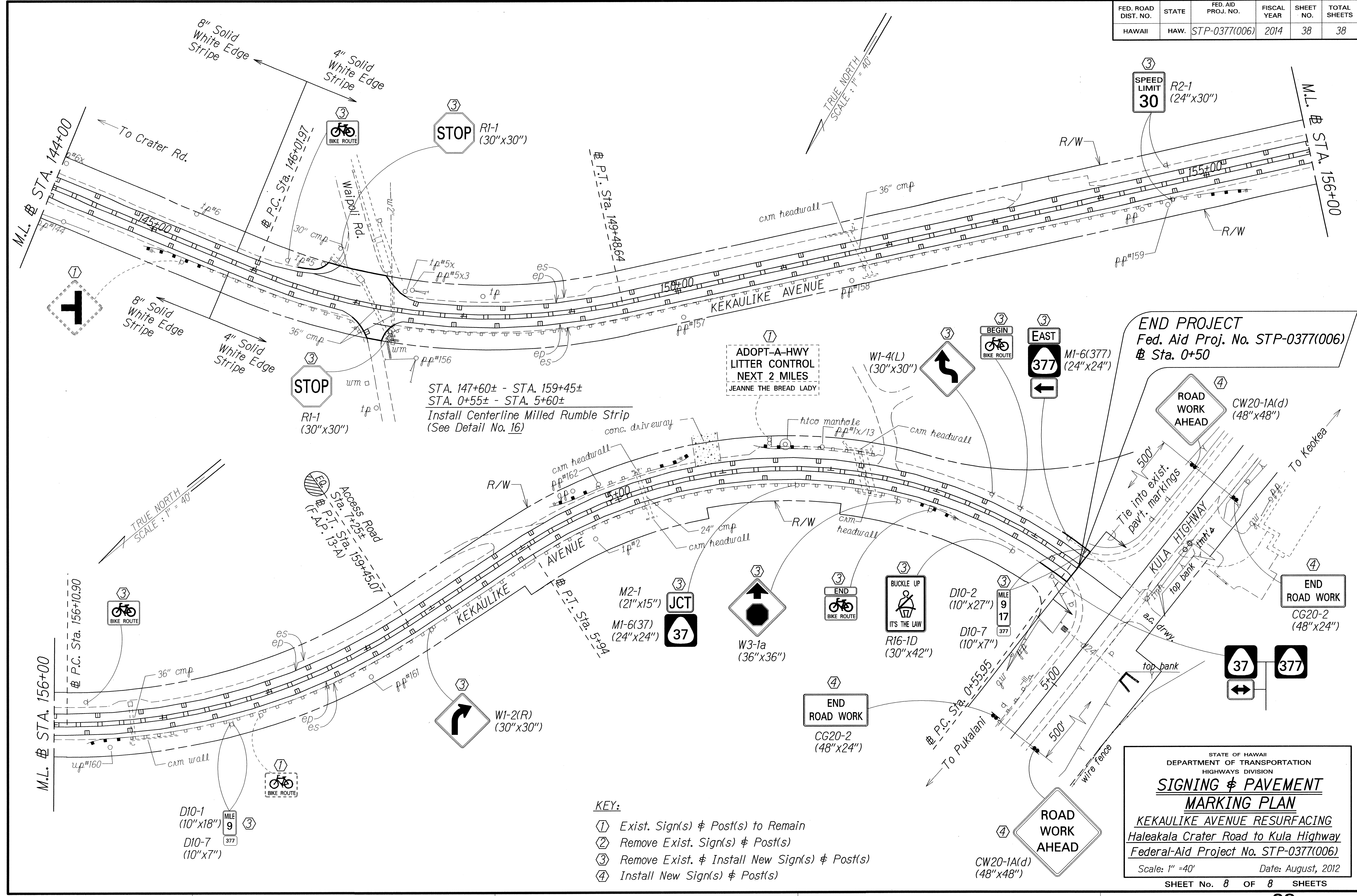


ORIGINAL PLAN	DATE	BY
DESIGNED BY		
TRACED BY		
QUANTITIES BY		
CHECKED BY		

- KEY:**
- ① Exist. Sign(s) & Post(s) to Remain
  - ② Remove Exist. Sign(s) & Post(s)
  - ③ Remove Exist. & Install New Sign(s) & Post(s)
  - ④ Install New Sign(s) & Post(s)

STATE OF HAWAII  
 DEPARTMENT OF TRANSPORTATION  
 HIGHWAYS DIVISION  
**SIGNING & PAVEMENT MARKING PLAN**  
 KEKAULIKE AVENUE RESURFACING  
 Haleakala Crater Road to Kula Highway  
 Federal-Aid Project No. STP-0377(006)  
 Scale: 1" = 40' Date: August, 2012  
 SHEET No. 7 OF 8 SHEETS

FED. ROAD DIST. NO.	STATE	FED. AID PROJ. NO.	FISCAL YEAR	SHEET NO.	TOTAL SHEETS
HAWAII	HAW.	STP-0377(006)	2014	38	38



STA. 147+60± - STA. 159+45±  
 STA. 0+55± - STA. 5+60±  
 Install Centerline Milled Rumble Strip  
 (See Detail No. 16)

**END PROJECT**  
 Fed. Aid Proj. No. STP-0377(006)  
 Sta. 0+50

STATE OF HAWAII  
 DEPARTMENT OF TRANSPORTATION  
 HIGHWAYS DIVISION  
**SIGNING & PAVEMENT MARKING PLAN**  
 KEKAULIKE AVENUE RESURFACING  
 Haleakala Crater Road to Kula Highway  
 Federal-Aid Project No. STP-0377(006)  
 Scale: 1" = 40' Date: August, 2012  
 SHEET No. 8 OF 8 SHEETS

- KEY:**
- ① Exist. Sign(s) & Post(s) to Remain
  - ② Remove Exist. Sign(s) & Post(s)
  - ③ Remove Exist. & Install New Sign(s) & Post(s)
  - ④ Install New Sign(s) & Post(s)

SURVEY PLOTTED BY	DATE
DRAWN BY	2/12
DESIGNED BY	
DESIGNED BY	
QUANTITIES BY	
CHECKED BY	