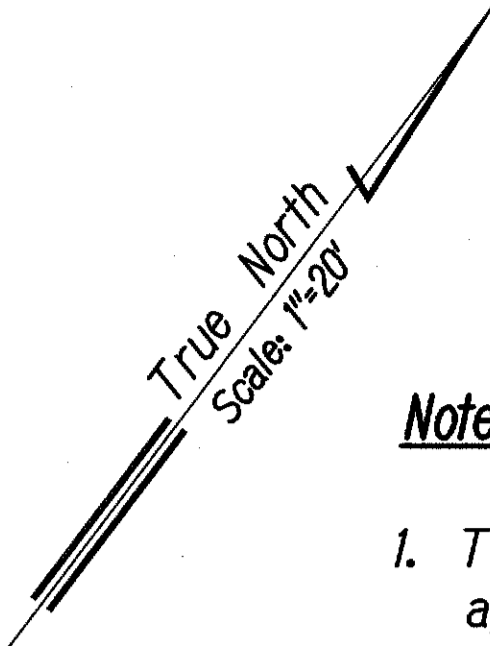


FED. ROAD DIST. NO.	STATE	PROJ. NO.	FISCAL YEAR	SHEET NO.	TOTAL SHEETS
HAWAII	HAW.	377A-01-11	2014	11	28

Ⓢ CURVE DATA
 (Ⓢ P.C. Sta. 97+41.92 to Ⓢ P.T. Sta. 102+68.75)
 $\Delta = 94^{\circ} 50' 00''$
 $\Delta/2 = 47^{\circ} 25' 00''$
 $R = 318.40$
 $T = 346.46$
 $C = 468.87$
 $Lc = 527.00$



Note:

1. The Contractor shall provide safeguards and exercise caution against damage and/or defacement of all existing improvements to remain. Existing improvements shall include but are not limited to CRM and concrete walls, fences, gates, mail boxes, roadways, concrete slabs, pavements, utilities and structures. Any damaged and/or defaced existing improvements resulting from the contractor's activities, as determined by the Engineer, shall be repaired and restored to its original condition or better to the satisfaction of the Engineer. The Contractor shall be responsible to pay for all costs to repair and restore existing improvements.
2. The contractor shall restore all disturbed areas including but not limited to grassed and other landscaped areas to their original condition or better to the satisfaction of the Engineer in accordance with Section 619 - Planting of the Hawaii Standard Specifications for Road and Bridge Construction dated 2005. The Contractor shall be responsible to pay for all costs to restore disturbed areas.

LEGEND FOR
AS-BUILT POSTINGS

Squiggly line for as-built deletion
 Double line for as-built deletion
Roadway Text for as-built posting

SURVEY PLOTTED BY	DATE
DRAWN BY	
DESIGNED BY	
QUANTITIES BY	
CHECKED BY	
ORIGINAL PLAN	
NOTE BOOK	
No.	

BENCH MARK
 NAIL 705
 ELEV = 3479.87
 FB 2924/55

BENCH MARK
 NAIL 704B
 ELEV = 3489.43
 FB 2924/48



THIS WORK WAS PREPARED BY ME OR UNDER MY SUPERVISION.

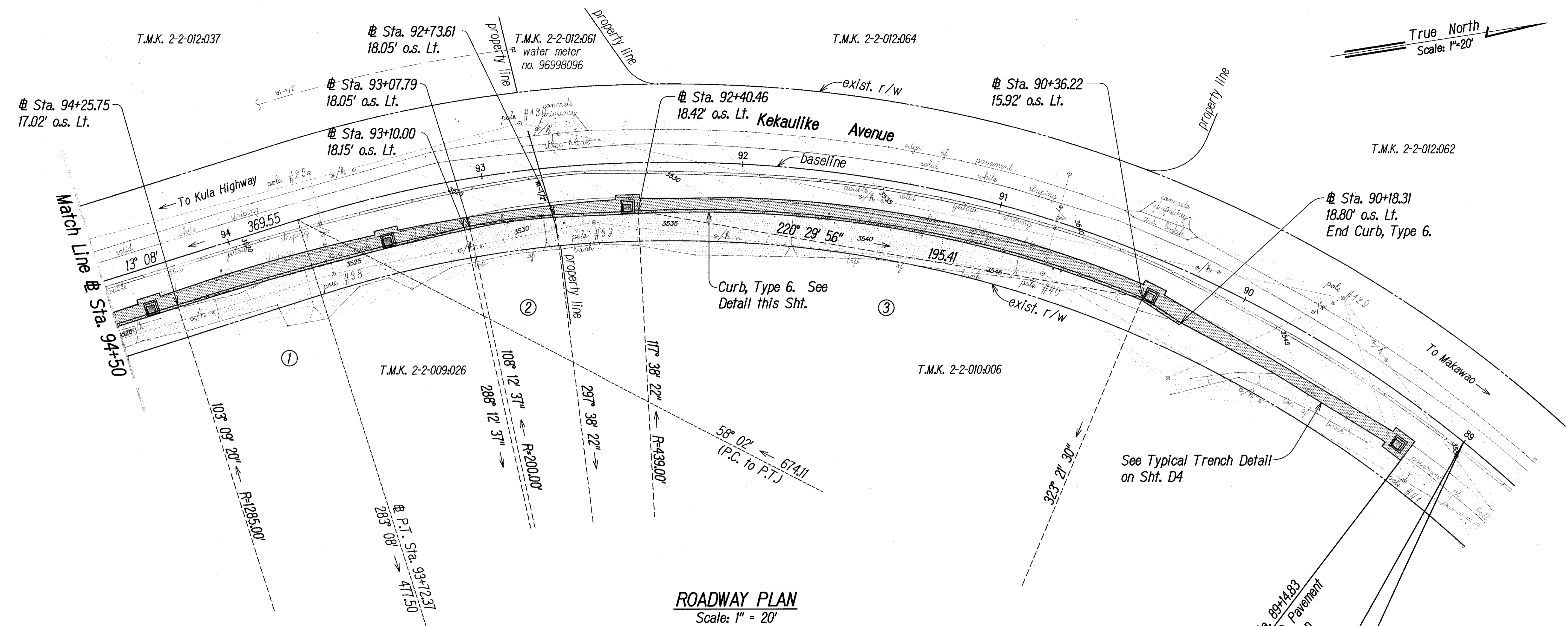
Russell M. Araki
 Russell M. Araki, Inc.
 480 PARK ENGINEERING
 APRIL 30, 2016
 LIC. EXP. DATE

STATE OF HAWAII
 DEPARTMENT OF TRANSPORTATION
 HIGHWAYS DIVISION
ROADWAY PLAN
 KEKAULIKE AVENUE
 Drainage Improvements
 Mile Post 7.6 to Mile Post 7.9
 PROJECT NO. 377A-01-11
 Scale: As Shown Date: September 2013
 SHEET No. C11 OF C13 SHEETS

ROADWAY PLAN
 Scale: 1" = 20'

"AS-BUILT"

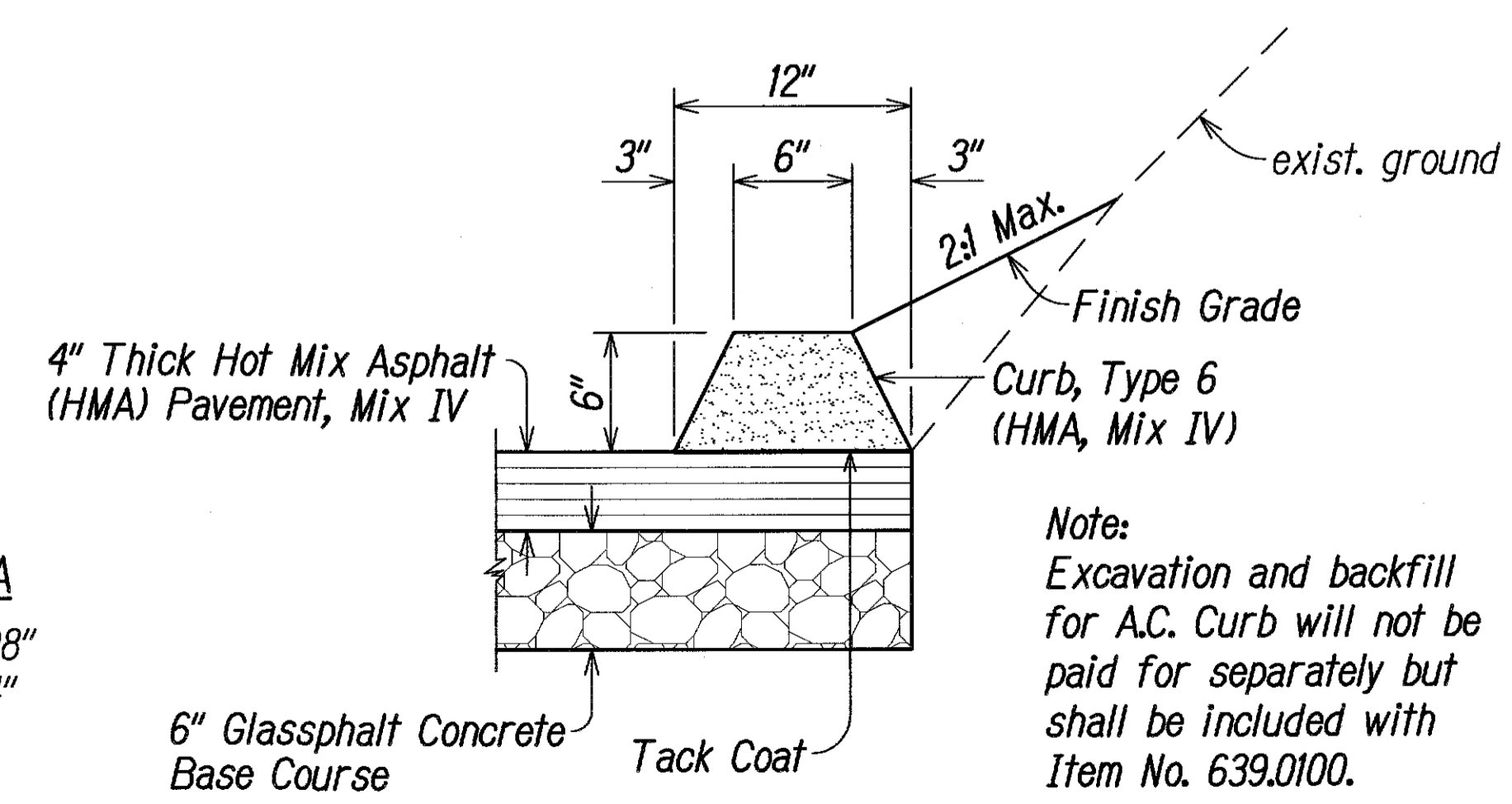
FED. ROAD DIST. NO.	STATE	PROJ. NO.	FISCAL YEAR	SHEET NO.	TOTAL SHEETS
HAWAII	HAW.	377A-01-11	2014	13	28



④ CURVE DATA
 (④ P.C. Sta. 86+23.98 to ④ P.T. Sta. 93+72.37)
 $\Delta = 89^\circ 48' 00''$
 $\Delta/2 = 44^\circ 54' 00''$
 $R = 477.50$
 $T = 475.84$
 $C = 674.11$
 $L_c = 748.39$

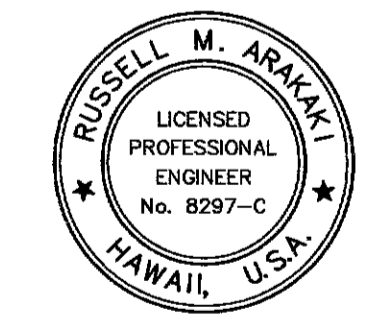
① CURB DATA	② CURB DATA	③ CURB DATA
$\Delta = 05^\circ 03' 17''$	$\Delta = 09^\circ 25' 45''$	$\Delta = 25^\circ 43' 08''$
$\Delta/2 = 02^\circ 31' 38''$	$\Delta/2 = 04^\circ 42' 53''$	$\Delta/2 = 12^\circ 51' 34''$
$R = 1285.00$	$R = 200.00$	$R = 439.00$
$T = 56.72$	$T = 16.49$	$T = 100.22$
$C = 113.33$	$C = 32.88$	$C = 195.41$
$L_c = 113.36$	$L_c = 32.91$	$L_c = 197.06$

ROADWAY PLAN
 Scale: 1" = 20'



CURB, TYPE 6 DETAIL
 Scale: 1-1/2" = 1'-0"

END PROJECT
 Project No. 377A-01-11
 ④ Sta. 89+00



THIS WORK WAS PREPARED BY ME
 OR UNDER MY SUPERVISION.
Russell M. Arakaki
 APRIL 30, 2014
 dba PARK ENGINEERING

STATE OF HAWAII
 DEPARTMENT OF TRANSPORTATION
 HIGHWAYS DIVISION

ROADWAY PLAN

KEKAULIKE AVENUE
Drainage Improvements
Mile Post 7.6 to Mile Post 7.9
PROJECT NO. 377A-01-11

Scale: As Shown Date: September 2013

SHEET No. C1.3 OF C1.3 SHEETS