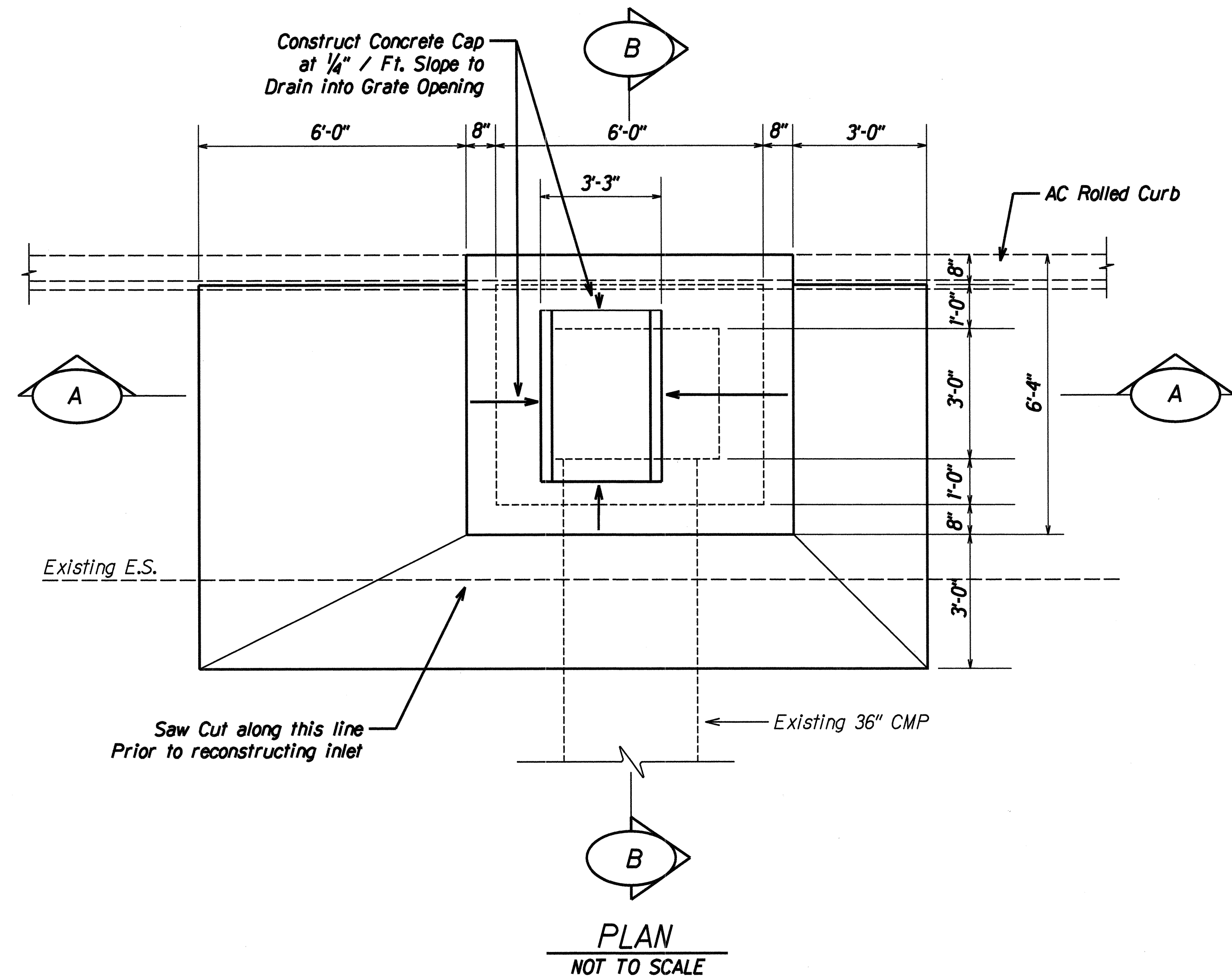


FED. ROAD DIST. NO.	STATE	PROJ. NO.	FISCAL YEAR	SHEET NO.	TOTAL SHEETS
HAWAII	HAW.	377B-01-96M	1996	15	28

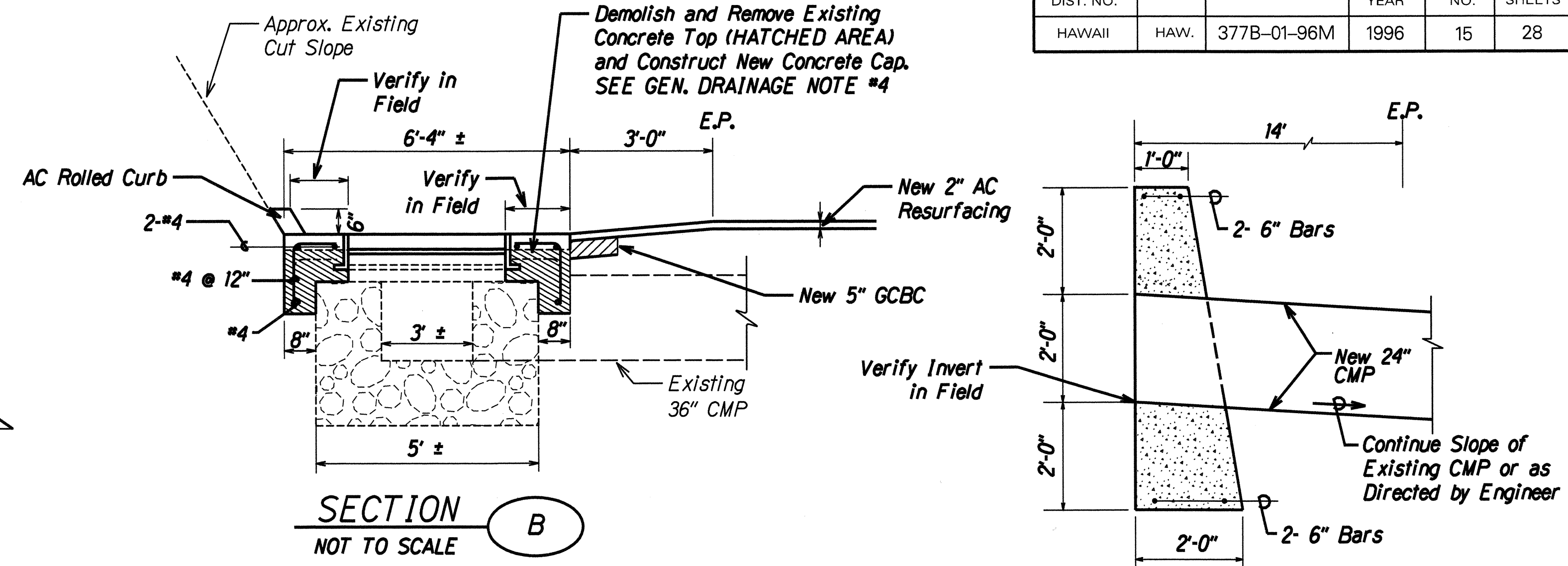


NOTES:

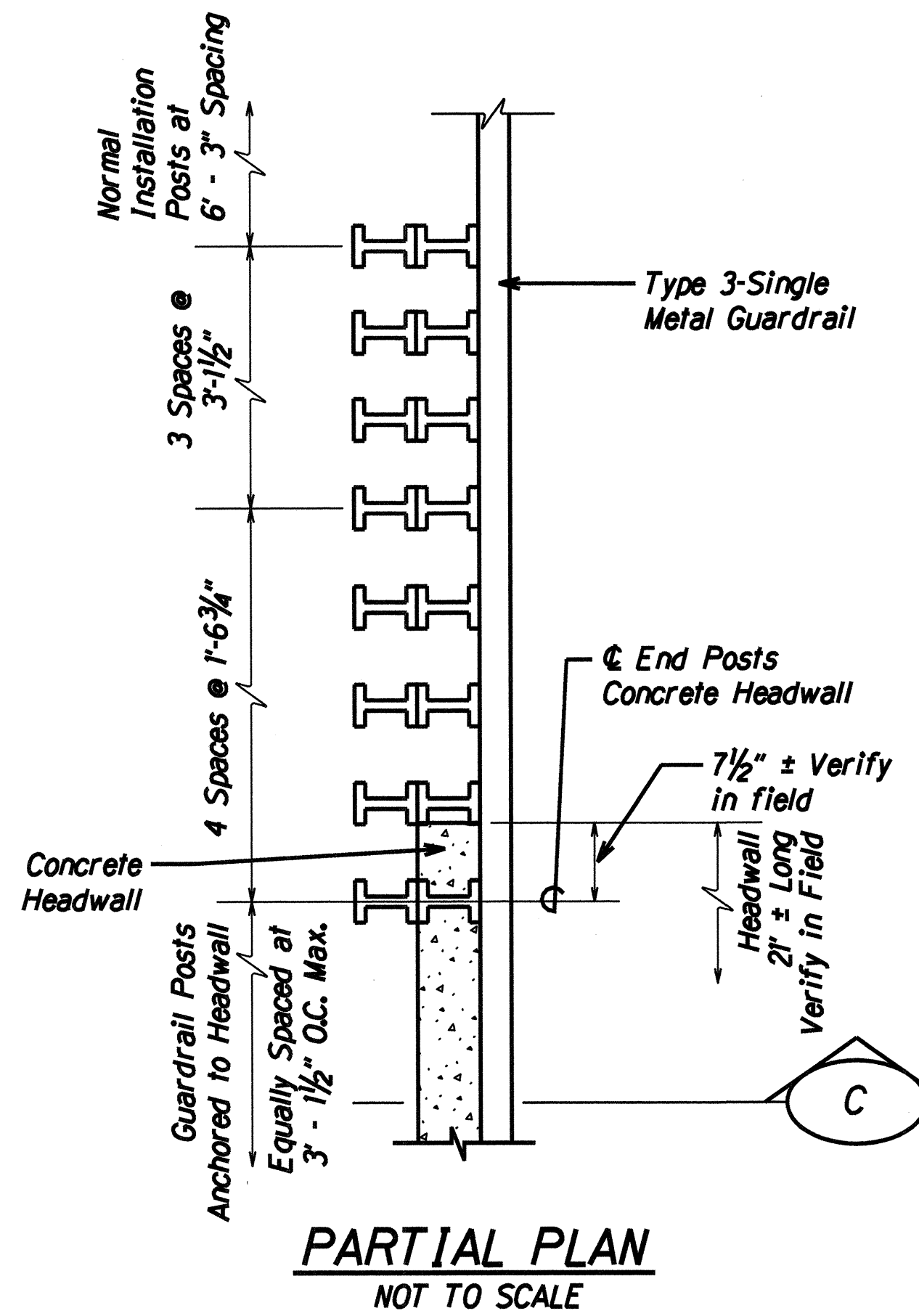
1. CLEAN EXISTING INLET AND CULVERT TO BE FUNCTIONAL AS DIRECTED BY ENGINEER. COSTS OF CLEANING WILL NOT BE PAID SEPARATELY BUT CONSIDERED INCIDENTAL TO THE RECONSTRUCTION OF GDI.
2. VERIFY ALL DIMENSIONS IN THE FIELD PRIOR TO CONSTRUCTION. NEW CAP OF GDI SHALL MATCH THE HORIZONTAL DIMENSIONS OF THE EXISTING CONCRETE TOP.

RE-CONSTRUCTION OF GRATED DROP INLET
at STA. 104+72 ± Lt.

SECTION A
NOT TO SCALE



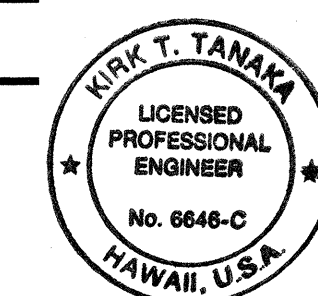
MODIFIED CONCRETE HEADWALL DETAIL
at Sta. 63+74 ± Lt.
NOT TO SCALE



MODIFICATION OF EXISTING CONCRETE HEADWALL AND TYPICAL GUARDRAIL CONNECTION
3' x 5' R.C.B.C. INLET AT STA. 2+00 ± Lt.
NOT TO SCALE

CONNECTION OF NEW CONCRETE TO EXISTING HEADWALL:
CLEAN, ROUGHEN SURFACE AND APPLY EPOXY BONDING AGENT AT CONTACT SURFACES PRIOR TO POUR. BONDING AGENT TO BE APPROVED BY THE ENGINEER AND SHALL BE APPLIED PER MANUFACTURER'S INSTRUCTION.

THIS WORK WAS PREPARED BY ME OR UNDER MY SUPERVISION
R. T. Tanaka
R. T. TANAKA ENGINEERS, INC.
CIVIL ENGINEERING - LAND SURVEYING



STATE OF HAWAII
DEPARTMENT OF TRANSPORTATION
HIGHWAYS DIVISION

DRAINAGE DETAILS AND NOTES

KEKAULIKE AVENUE RESURFACING
HALEAKALA CRATER ROAD TO KULA HIGHWAY
PROJECT NO. 377B-01-96M

Scale: AS NOTED Date: APRIL, 1996
SHEET No. 2 OF 2 SHEETS

SURVEY PLOTTED BY	DATE
DRAWN BY	
TRACED BY	
QUANTITIES BY	
CHECKED BY	
ORIGINAL PLAN	
NOTE BOOK	
NO.	